

Evaluation of current international names servers

Ferjan Ormeling

1. GEOnet Names Server (GNS)

NATIONAL GEOSPATIAL-INTELLIGENCE AGENCY

GNS Search

The geographic names in this database are provided for the guidance of and use by the Federal Government and for the information of the general public. **The names, variants, and associated data may not reflect the views of the United States Government on the sovereignty over geographic features.**

Search **Output**

Quick Search
 Detailed Search

Options
Fuzzy Search
Advanced Search
Feature Designations
MBR Search

Tools / Misc:

Help
Email: GeoNames@nqa.mil

Names Search

Country: Afghanistan (AF), Akrotiri Sovereign Base Area (AX), Albania (AL), Algeria (AG), American Samoa (AQ)

Name: Nairobi

Starts With: Starts With

Roman Script: Roman Script

ADM1 Names:

Name	Country	ADM1	Latitude/Longitude	Feature Type
Nairobi South, Engare (BGN Standard)	Tanzania	Tanzania (general)	03° 02' 00" S	stream
South Engare Nairobi (Variant)			036° 59' 00" E	
Nairobi North, Engare (BGN Standard)	Tanzania	Tanzania (general)	02° 58' 00" S	stream
North Engare Nairobi (Variant)			036° 58' 00" E	
Nairobi (BGN Standard)	Tanzania	Tanzania (general)	04° 57' 00" S 038° 56' 00" E	populated place
Nyairobi (BGN Standard)	Kenya	Nyanza	01° 08' 00" S	stream
Nairobi (Variant)			034° 33' 00" E	
Nairobi West (BGN Standard)	Kenya	Nairobi Area	01° 18' 00" S 036° 49' 00" E	section of populated place
Nairobi South (BGN Standard)	Kenya	Nairobi Area	01° 19' 00" S 036° 50' 00" E	section of populated place
Nairobi National Park (BGN Standard)	Kenya	Nairobi Area	01° 22' 00" S	park
Nairobi Royal National Park (Variant)			036° 50' 00" E	
Nairobi Industrial Area (BGN Standard)	Kenya	Nairobi Area	01° 18' 00" S 036° 50' 00" E	section of populated place
Nairobi Hill (BGN Standard)	Kenya	Nairobi Area	01° 18' 00" S 036° 49' 00" E	section of populated place
Nairobi Falls (BGN Standard)	Kenya	Kenya (general)	01° 12' 00" S 037° 04' 00" E	waterfall(s)
Nairobi Dam (BGN Standard)	Kenya	Nairobi Area	01° 19' 00" S 036° 48' 00" E	pond
Nairobi Area (BGN Standard) Nairobi (Short)	Kenya	Nairobi Area	01° 17' 00" S 036° 50' 00" E	first-order administrative division
Nairobi (BGN Standard)	Kenya	Kenya (general)	01° 12' 00" S 037° 10' 00" E	stream
Nairobi (BGN Standard)	Kenya	Central	00° 24' 00" S 037° 01' 00" E	stream
Nairobi (BGN Standard)	Kenya	Nairobi Area	01° 17' 00" S	capital of a political entity
Nairoba (Variant)			036° 49' 00" E	
Jomo Kenyatta Airport Nairobi (Not Verified)	Kenya	Nairobi Area	01° 19' 00" S	airfield
Nairobi Airport (Variant)			036° 56' 00" E	
Nairobi (BGN Standard)	South Africa	Limpopo	22° 44' 00" S 030° 04' 00" E	farm
Nairobi Ranch (BGN Standard)	Kenya	Coast	02° 31' 01" S 040° 36' 07" E	nature reserve

1. GEOnet Names Server = GNS

Query for Nairobi



The GeoNames geographical database covers all countries and contains over eight million placenames that are available for download free of charge.

[\[advanced search\]](#)

enter a location name, ex: "Paris", "Mount Everest", "New York"

Browse the names

- [Countries](#)
- [Largest cities](#)
- [Highest mountains](#)
- [Capitals](#)
- [Postal codes](#)
- [Wikipedia](#)
- [Country statistics](#)
- [Recent modifications](#)

Information

- [About GeoNames](#)
- [Data sources](#)
- [User manual](#)
- [Ambassadors and team](#)
- [Forum](#)
- [Blog](#)
- [Mailing list](#)
- [Give a donation](#)
- [Commercial support and consulting](#)

Download

- [Info](#)
- [Download server](#)

Webservices

- [Overview](#)
- [Documentation](#)
- [Client libraries](#)

2. Geonames

Map center : S 3° 41' 5" E 39° 16' 24"

searching for "kizingo country:KE"

GeoNames Wikipedia

features

- city, village,...
- mountain, hill, rock,...
- stream, lake, ...
- country, state, region,...
- parks, area, ...
- road, railroad
- spot, building, farm
- forest, heath, ...
- undersea

Kizingo ca. 225 m
Kenya » Coast
area
S 3° 58' 0" E 39° 13' 0"
-3.96667 / 39.21667
GeoNameId : 190883

[zoom](#) [move](#) [edit](#) [history](#) [tag](#) [delete](#) [alternate names](#)
[perma link](#) [geotree](#) [semantic web rdf](#)

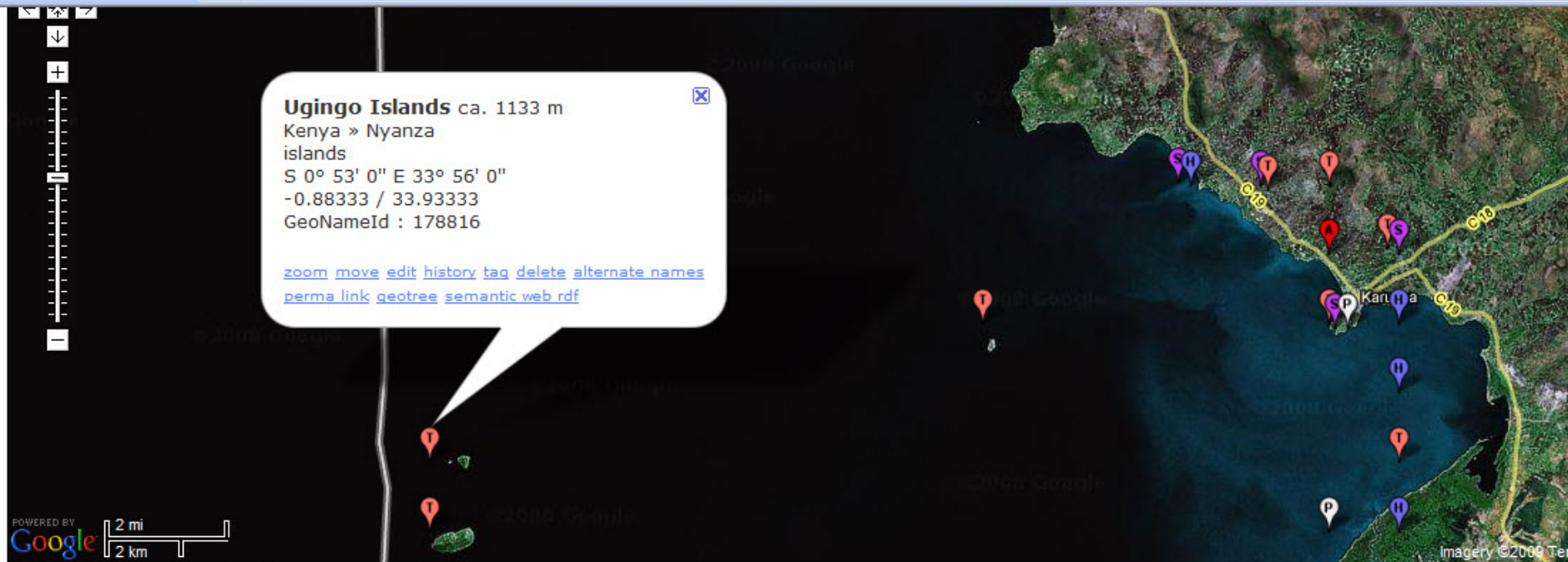
kizingo Kenya

search show on map [advanced search](#)

4 records found for "kizingo"

	Name	Country	Feature class	Latitude	Longitude
1	Kizingo	Kenya , Coast	area	S 3° 58' 0"	E 39° 13' 0"
2	Kizingo Dam	Kenya , Coast	pond	S 3° 58' 0"	E 39° 13' 0"
3	Kizingo Chizingo	Kenya , Coast	hill	S 3° 47' 0"	E 39° 40' 0"
4	Kizingo Sub-Location	Kenya , Coast	administrative division	S 3° 47' 0"	E 39° 40' 0"

2. GeoNames: Ugingo



	Name	country	feature	km to center
1	Ugingo Islands	Kenya	islands	0.05 km
2	Pyramid Island	Kenya	island	1.89 km
3	Mbaiyu Island	Kenya	island	15.31 km
4	Kisaaka	Kenya	stream	21.71 km
5	Gunga	Kenya	school	21.71 km
6	Kadem Point	Kenya	point	22.58 km
7	Gucha	Kenya	stream	22.96 km
8	Aneko	Kenya	hill	22.96 km
9	Rabuor	Kenya	school	23.46 km
10	Wi Rabuor	Kenya	hills	23.46 km
11	Migori	Kenya	stream	23.48 km
12	Ngiri	Kenya	populated place	24.2 km
13	Suri Point	Kenya	point	24.4 km

3. Getty thesaurus

http://www.getty.edu/research/conducting_research/vocabularies/tgn/index.html

SnagIt

Getty Thesaurus of Geographic Names (Research ...)


The Getty

Home Visit Museum **Research Institute** Conservation Institute

Exhibitions Conducting Research Scholarly Activities About the Research Institute

Research Home ▶ Conducting Research ▶ Learn about the Getty Vocabularies ▶ Getty Thesaurus of Geographic Names

Getty Thesaurus of Geographic Names® Online



Conducting Research
Scholarly Activities
About the Research Institute

Search the TGN

[? Help](#)

Find Name or ID: [Search](#)

Place Type: [Clear](#)

Nation: [Lookup](#)

[Pop-up Search](#) [Browse the TGN hierarchies](#)

[Copyright information](#)

Search Tips

For the Find Name field, you may use **AND** and **OR** [e.g., 1) san carlos, 2) carlos OR charles, 3) carl* OR charl*, 4) san AND carlos, 5) carlos AND (san OR saint), 6) (carlos OR charles) AND (san OR saint)] Boolean operators must be in all caps (AND and OR). Wildcard is the asterisk (*); right truncation only. To find an exact match rather than a key word, use quotes [e.g., "carlos"]. There is an implied AND between the Find Name, Place Type, and Nation fields.

About the TGN

Learn about the purpose, scope and structure of the TGN. The TGN is an evolving vocabulary, growing and changing thanks to contributions from Getty projects and other institutions. Find out more about the TGN's contributors.

Computerworld Honors

Congratulations: The Getty wins the Computerworld Honors Program (Media, Arts & Entertainment) recognizing the innovative use of technology, for "Web-Based Global Art Resources: the Getty Vocabularies."

F.A.Q. about the TGN

Here you will find a list of the most frequently asked questions about the thesaurus.

Related Sections

- Learn about the Getty Vocabularies
- Contribute to the Getty Vocabularies
- Frequently Asked Questions
- Getty Vocabularies Download Center
- Editorial Guidelines
- Training Materials for Vocabularies and Standards

See Also

- AAT
- ULAN

[✉ Email Vocabulary Program](#)

3. Getty thesaurus (sounds as)



Research

[Research Home](#) ▶ [Conducting Research](#) ▶ [Getty Thesaurus of Geographic Names](#) ▶ [Search Results](#)



Getty Thesaurus of Geographic Names® Online Search Results

[New Search](#)

[Previous Page](#)

[? Help](#)

Find Name: **maasai mara**

[Vernacular Display](#) | **English Display**

Place Type:

Nation: **Kenya**

1 result

[View Selected Records](#)

[Select All Records](#)


[Clear All](#)

[First](#)

[Previous](#)
Page: **1**

[Next](#)

[Last](#)

Click the  icon to view the hierarchy.
Check boxes to view multiple records at once.

-  **Masai Mara National Reserve** (nature reserve)
(World, Africa, Kenya, Rift Valley) [7031941]
Maasai Mara National Reserve

3. Getty thesaurus: hierarchy



Research

[Research Home](#) ▶ [Conducting Research](#) ▶ [Thesaurus of Geographic Names](#) ▶ [Hierarchy Display](#)



Getty Thesaurus of Geographic Names® Online
Hierarchy Display

[New Search](#)


[Previous Page](#)

[Help](#)

[Vernacular Display](#) | **[English Display](#)**

[View Selected Records](#)

[Clear All](#)

Click the  icon to view the hierarchy.
Check the boxes to view multiple records at once.

-  [Top of the TGN hierarchy \(hierarchy root\)](#)
-  [.... World \(facet\)](#)
-  [..... Africa \(continent\)](#)
-  [..... Kenya \(nation\)](#)
-  [..... Rift Valley \(province\)](#)
-  [..... Masai Mara National Reserve \(nature reserve\)](#)

 **Getty Thesaurus of Geographic Names® Online**
Full Record Display

 [New Search](#)

[← Previous Page](#)

 [Help](#)

[Vernacular Display](#) | [English Display](#)

Click the  icon to view the hierarchy.

ID: 7031941

Record Type: [administrative](#)

 **Masai Mara National Reserve (nature reserve)**

Coordinates:
Lat: 01 25 00 S *degrees minutes* Lat: -1.4160 *decimal degrees*
Long: 035 44 00 E *degrees minutes* Long: 35.7450 *decimal degrees*

- Names:**
- Masai Mara National Reserve ([preferred](#), C,V,N,display,LC,English-P)
 - Masai Mara Game Reserve (C,V,N)
 - Narok-Masai Game Reserve (C,V,N)
 - Mara Game Reserve (C,V,N)
 - Maasai Mara National Reserve (C,V,N)

- Hierarchical Position:**
-  World (facet)
 -  Africa (continent)
 -  Kenya (nation)
 -  Rift Valley (province)
 -  Masai Mara National Reserve (nature reserve)

- Place Types:**
- nature reserve ([preferred](#), C)
 - wildlife refuge (C)

- Sources and Contributors:**
- Maasai Mara National Reserve..... [VP]
..... [Encyclopaedia Britannica Online \(2002-\)](#) "Kenya; Cultural life; Cultural institutions;" accessed 14 May 2007
 - Mara Game Reserve..... [VP]
..... [NGA, GEOnet Names Server \(2004-2008\)](#) accessed 14 May 2007
 - Masai Mara Game Reserve..... [VP]
..... [NGA, GEOnet Names Server \(2004-2008\)](#) accessed 14 May 2007
 - Masai Mara National Reserve..... [VP Preferred]
..... [LC Subject Authority Headings. \[online\] \(2002-\)](#) NAFL85081790, accessed 14 May 2007
 - Narok-Masai Game Reserve..... [VP]
..... [NGA, GEOnet Names Server \(2004-2008\)](#) accessed 14 May 2007

- Subject:** [VP]
- [Encyclopaedia Britannica Online \(2002-\)](#) "Kenya; Cultural life; Cultural institutions;" accessed 14 May 2007
 - [LC Subject Authority Headings. \[online\] \(2002-\)](#) accessed 14 May 2007; NAFL85081790, accessed 14 May 2007
 - [NGA, GEOnet Names Server \(2004-2008\)](#) accessed 14 May 2007

3. Getty thesaurus: alternatives and sources

4. Fuzzy Gazetteer



European Commission
Joint Research Centre
Institute for the Protection and Security of the Citizen



SES
external security



JRC Fuzzy Gazetteer

Search over 7,000,000 place names (mostly from the [Geonet Names Server](#)) using a phonetic transcription of the place. The search is spelling tolerant, with more emphasis on the vo

Find Place:

[More Options](#) ▾

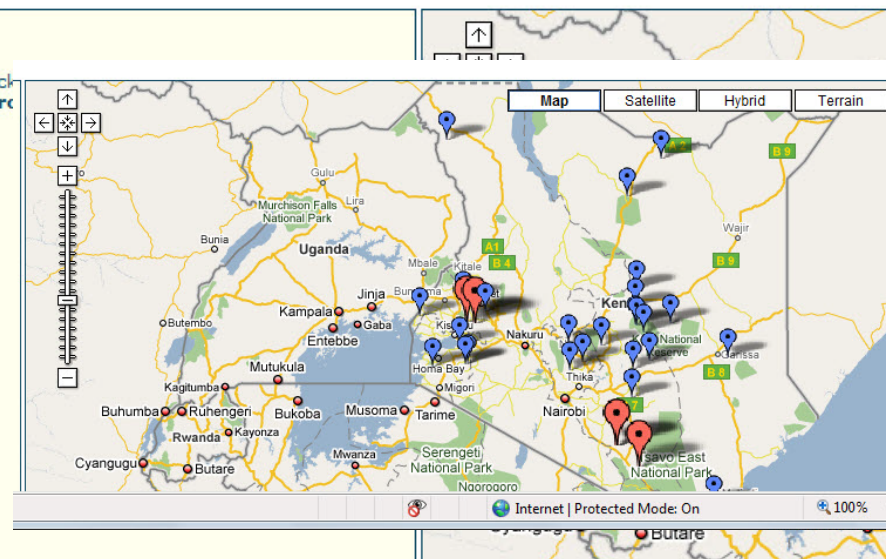


Searching for
Kakamega

Results for kakamega

You can interactively explore the area around a place with the map on the side. Click place. Alternatively, you can see a place in [Google Earth](#) or in the [Digital Map Arc](#)

- Kakamega, Western Province, Kenya** ★★★★★
seat of a first-order administrative division
Coordinates (lat/long):
Decimal degrees: 0.2833333 / 34.75
Degrees, minutes, seconds: 1700 / 344500
- Kakamega, Western Province, Kenya** ★★★★★
factory --MFG
Coordinates (lat/long):
Decimal degrees: 0.2666667 / 34.9166667
Degrees, minutes, seconds: 1600 / 345500
- Kakangani, Eastern Province, Kenya** ★★★★★☆
stream --STM
Coordinates (lat/long):
Decimal degrees: -2.0166666 / 37.5833333
Degrees, minutes, seconds: -20100 / 373500
- Kakangani, Eastern Province, Kenya** ★★★★★☆
area --AREA
Coordinates (lat/long):
Decimal degrees: -2.0166666 / 37.5666667



Results for kizingo

You can interactively explore the area around a place with the map on the side. Click on '[See on map](#)' to center the map on a place. Alternatively, you can see a place in [Google Earth](#) or in the [Digital Map Archive Explorer](#).

[Open Google Earth](#)

Kizingo, Coast Province, Kenya ★★★★★
hill --HLL

[See on map](#)

Coordinates (lat/long):
Decimal degrees: -3.7833332 / 39.6666667
Degrees, minutes, seconds: -34700 / 394000

[Open Google Earth](#)

Kizingo, Coast Province, Kenya ★★★★★
area --AREA

[See on map](#)

Coordinates (lat/long):
Decimal degrees: -3.9666666 / 39.2166667
Degrees, minutes, seconds: -35800 / 391300

[Open Google Earth](#)

Kisingo, Eastern Province, Kenya ★★★★★☆
well --WLL

[See on map](#)

Coordinates (lat/long):
Decimal degrees: -2.2333332 / 37.8333333
Degrees, minutes, seconds: -21400 / 375000

[Open Google Earth](#)

Kisingo, Eastern Province, Kenya ★★★★★☆
market --MKT

[See on map](#)

Coordinates (lat/long):
Decimal degrees: -2.2333332 / 38.0
Degrees, minutes, seconds: -21400 / 380000

[Open Google Earth](#)

Kisingo, Eastern Province, Kenya ★★★★★☆
area --AREA

[See on map](#)

Coordinates (lat/long):
Decimal degrees: -2.2333332 / 37.8333333
Degrees, minutes, seconds: -21400 / 375000

[Open Google Earth](#)

Kikingo, Eastern Province, Kenya ★★★★★☆
hill --HLL

[See on map](#)

Coordinates (lat/long):
Decimal degrees: -0.0999999 / 38.1
Degrees, minutes, seconds: -600 / 380600

[Open Google Earth](#)

Kikingo, Eastern Province, Kenya ★★★★★☆
area --AREA

[See on map](#)

Coordinates (lat/long):
Decimal degrees: -0.0833332 / 38.0833333
Degrees, minutes, seconds: -500 / 380500

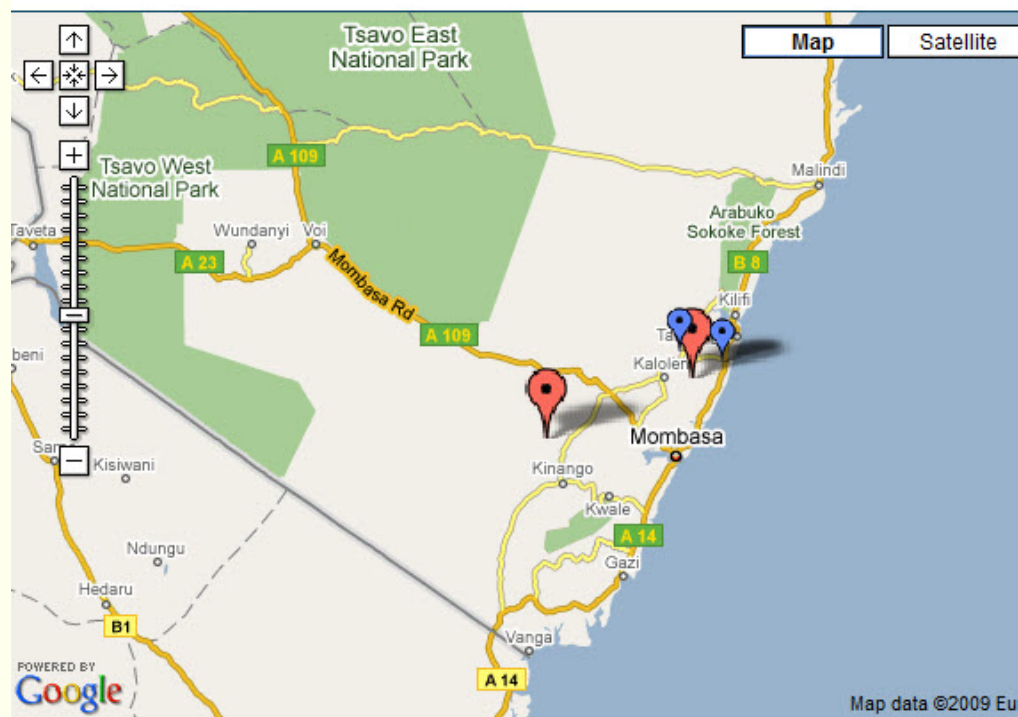
[Open Google Earth](#)

Chizingo, Coast Province, Kenya ★★★★★☆
hill --HLL

[See on map](#)

Coordinates (lat/long):
Decimal degrees: -3.7833332 / 39.6666667

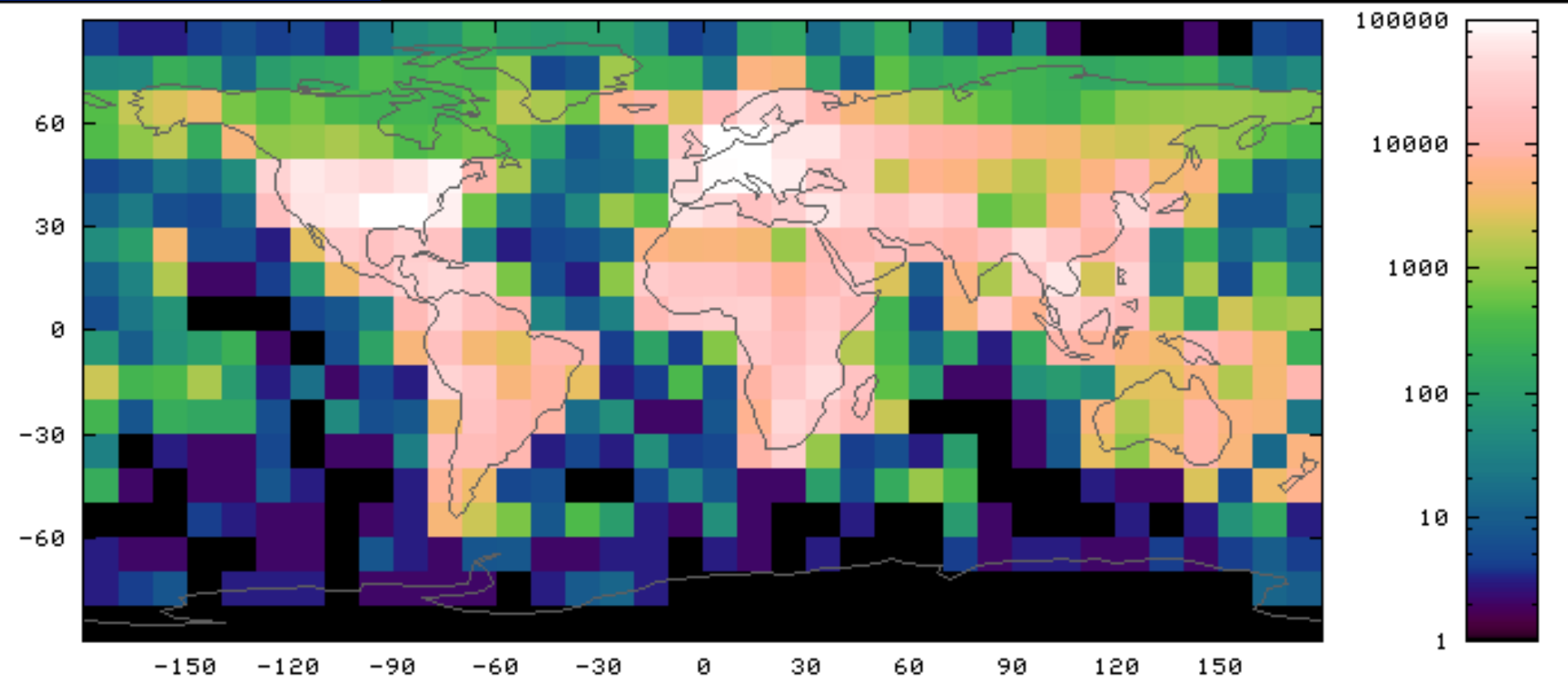
4. Fuzzy gazetteer



 Moderate match  Good match

ADL gazetteer

Regional coverage:



[Sweeping Sea Views](#)

Titled 36 acres, Isla Bocas, Panama Ideal for resort/gated community
www.bocasfarm.com

[WinterSailing Instruction](#)

ASA Certification on Island Packet Sailing Yachts
www.MDSchool.com



Ads by Google

Geographic and Geospatial Information Search

International, Excluding the United States and its Territories

Location or Feature Name

Full Text Search

Country Name



Founding president and liberation struggle icon Jomo KENYATTA led Kenya from independence until his death in 1978, when President Daniel Toroitich arap MOI took power in a constitutional succession. The country was a de facto one-party state from 1969 until 1982 when the ruling Kenya African National Union (KANU) made itself the sole legal party in Kenya. MOI acceded to internal and external pressure for political liberalization in late 1991. The ethnically fractured opposition failed to dislodge KANU from power in elections in 1992 and 1997, which were marred by violence and fraud, but are viewed as having generally reflected the will of the Kenyan people. President MOI stepped down in December of 2002 following fair and peaceful elections. Mwai KIBAKI, running as the candidate of the multiethnic, united opposition group, the National Rainbow Coalition, defeated KANU candidate Uhuru KENYATTA and assumed the presidency following a campaign centered on an anticorruption platform.




[Kenya CIA World Factbook Information](#)


6. Earth Search

Search Results - first 100

Name - click for world map location	Country	Type	Latitude	Longitude
Kizingo	KE	AREA	-3.9666667	39.2166667
Kizingo	KE	HLL	-3.7833333	39.6666667

7. World gazetteer

[home](#)
[news](#)
[countries/cities](#)
[summary statistics](#)
[search tools](#)
[info/help](#)
[options](#)




[Kenya](#)
[divisions](#)
[cities](#)
[clickable map](#)
[map layer](#)

[Africa](#)
[World](#)



World Gazetteer

sponsor:

World Population

Can we grow enough food and protect nature? Syngenta has an answer
www.growmorefromless.com



Ads by Google

Kenya: largest cities and towns and statistics of their population



download data for Google Earth



see also the list of metropolitan areas

no.	name	census 1989	census 1999	calculation 2009	annual growth	latitude	longitude	parent division	name variants	metropolitan area
1	Ahero		7 891	9 257		0.18°S	34.92°E	Nyanza		
2	Awendo		13 760	16 141		1.00°S	34.48°E	Nyanza		
3	Baringo		6 430	8 222		0.47°N	35.97°E	Rift Valley		
4	Bomet		4 426	5 660		0.79°S	35.35°E	Rift Valley		
5	Bondo		7 797	9 146		0.24°N	34.27°E	Nyanza		
6	Bungoma	26 805	44 196	69 658	4.65	0.57°N	34.56°E	Western		
7	Burnt Forest		3 180	4 066		0.23°N	35.42°E	Rift Valley		
8	Busia	20 781	30 777	51 204	5.22	0.39°N	34.31°E	Western		
9	Butere		9 761	12 936		0.22°N	34.48°E	Western		
10	Chepareria		901	1 152		1.32°N	35.20°E	Rift Valley		
11	Chogoria		2 500	2 983		0.23°S	37.65°E	Eastern		
12	Chuka	3 800	6 784	11 685	5.59	0.33°S	37.65°E	Eastern		
13	Elburgon			24 129						
14	Eldama Ravine		10 518	13 450		0.05°N	35.72°E	Rift Valley		
15	Eldoret	104 900	167 016	248 042	4.03	0.52°N	35.27°E	Rift Valley		



[home](#) [news](#) [countries/cities](#) [summary statistics](#) [search tools](#) [info/help](#) [options](#)  

[Eldoret](#) [clickable map](#) [map layer](#) [Qiblah](#) [Rift Valley \(province\)](#) [Kenya](#) [World](#)



World Gazetteer

sponsor:

[World Population](#)
Can we grow enough food and protect nature?
www.growmorefromless.com

Eldoret

type of geographical entity

city, town or place

geo-coordinates in degrees (decimal)

0.52°N

35.27°E

population figures

year	population	type	source
1979	50 503	census	secondary
1989	104 900	census	secondary
1999	167 016	census	official
2009	248 042	calculation	

7. World Gazetteer

8. Global gazetteer 2.1 (fallingrain)

Kenya

Places in Kenya that start with E

[Up](#)

Name	What	Region	Country	Lat	Long	Elev Ft.	Pop Est
Eastleigh	city	Nairobi Area	Kenya	-1.2666667	36.85	5538	689787
Eburemia	city	Western Province	Kenya	0.1166667	34.05	3799	38791
Ebusonga	city	Nyanza Province	Kenya	0.1130556	34.1044444	3891	38819
Egge	city	Coast Province	Kenya	-2.25	40.1166667	108	607
Eil Wak	city	North Eastern Province	Kenya	2.8094444	40.9358333	1190	617
Ekarakara	city	Eastern Province	Kenya	-0.9666667	37.4666667	4028	17670
Ekaru	city	Central Province	Kenya	-1.2	36.7	6519	93652
El Ben	city	North Eastern Province	Kenya	2.3166667	40.2	1568	644
El Dera	city	Eastern Province	Kenya	0.6	38.85	1128	493
El Jera	city	Coast Province	Kenya	-1.6666667	39.6	501	943
El Sadi	city	North Eastern Province	Kenya	1.7472222	40.0688889	823	613
El Wak	city	North Eastern Province	Kenya	2.8094444	40.9358333	1190	617
Ela	city	North Eastern Province	Kenya	-1.1666667	40.7833333	272	411
Elaa	city	North Eastern Province	Kenya	-1.1666667	40.7833333	272	411
Elangata Wuas	city	Rift Valley Province	Kenya	-1.8833333	36.5833333	4675	2100
Elbulbul	city	Rift Valley Province	Kenya	-1.3333333	36.6833333	6066	253675
Elburgon	city	Rift Valley Province	Kenya	-0.3	35.8166667	7952	24664
Eldama	city	Rift Valley Province	Kenya	0.05	35.7166667	6961	14028
Eldama Ravine	city	Rift Valley Province	Kenya	0.05	35.7166667	6961	14028
Eldoret	city	Rift Valley Province	Kenya	0.5166667	35.2833333	6948	50294
Elisha	city	Nyanza Province	Kenya	-0.9166667	34.5333333	4662	43124
Elmenteita	city	Rift Valley Province	Kenya	-0.4833333	36.15	6345	54968
Emali	city	Rift Valley Province	Kenya	-2.0833333	37.4666667	3707	12371
Emasatsi	city	Western Province	Kenya	0.15	34.65	4760	109927
Embakasi	city	Nairobi Area	Kenya	-1.3	36.9166667	5357	103447
Embu	city	Eastern Province	Kenya	-0.5333333	37.45	4245	59020

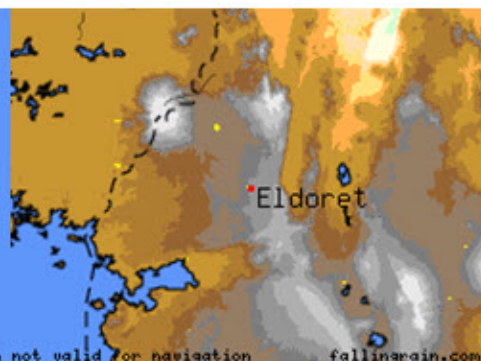
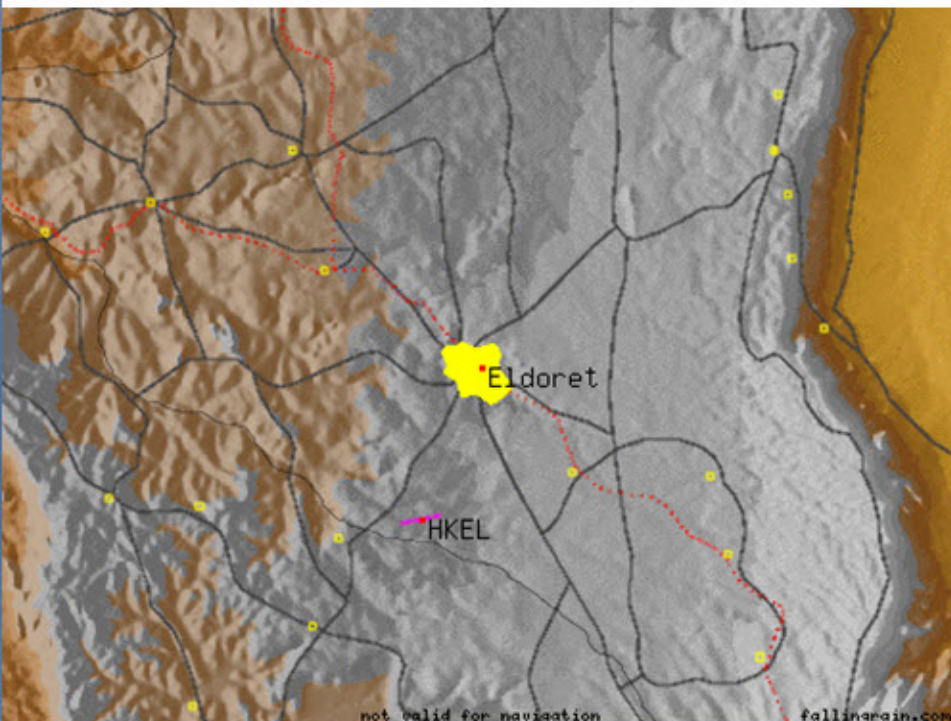
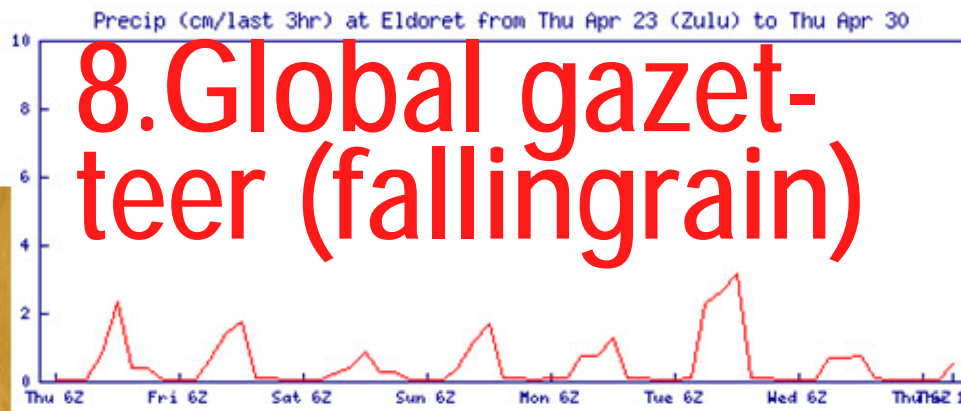
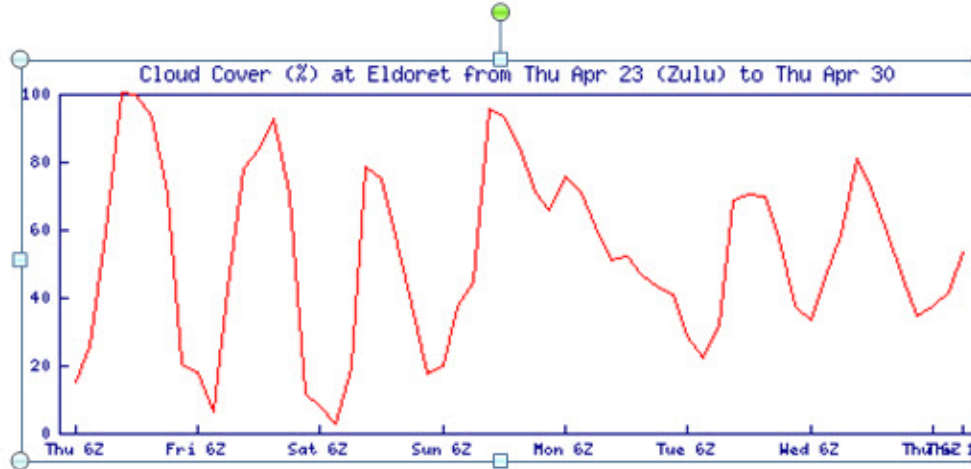
Eldoret, Kenya Page

Other names: Olderet, Olteret
World:Kenya:Rift Valley Province

Latitude 0.5167 Longitude 35.2833 Altitude (feet) 6948
Lat (DMS) 0° 31' 0N Long (DMS) 35° 16' 60E Altitude (meters) 2117
Time zone (est) UTC+3

Approximate population for 7 km radius from this point: 50294

[Google links for Eldoret](#) [Google links for Eldoret, Kenya](#)



9. World City Names database

nona.net
alex..mayrhofer::personal



GUEST

home → features → location finder

nonaneticon location finder enum lookup

search

place name

Kasanga

SEARCH

place details

Kasanga (Tanzania)



Kasanga is a populated place in Tanzania. An overview map of the region around Kasanga is displayed below.

Search for hotels in or around [Kasanga](#)

regional and 3d topo map of Kasanga, Tanzania ::



Ads by Google

Trouwen in Afrika

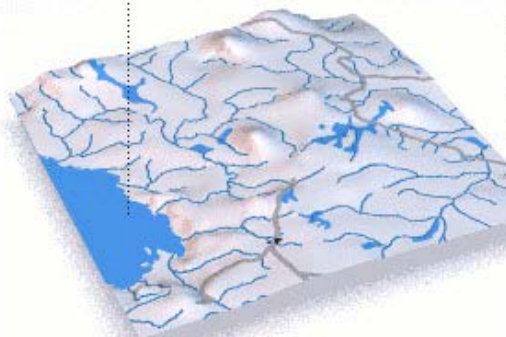
Trouwen op de meest bijzondere locaties in Kenia en Tanzania

www.ivoryandpearls.com

places near Kasanga, Tanzania ::

// 3.7km to [Muzi](#) [all distances 'as the bird flies' and approximate]

KASANGA



Places with similar names to Kasanga, Tanzania ::

// [Quizungo](#) (AO) // [Quizenque](#) (AO) // [Quizenqa](#) (AO) // [Quizenqa](#) (AO) // [Quizanqa](#) (AO) // [Quizanqa](#) (AO) // [Quizanqa](#) (AO) // [Quizanqa](#) (AO) // [Quizanqa](#) (AO) // [Quissunqa](#) (AO)

Disclaimer ::

Information on this page comes without warranty of any kind

overview map

Where is Kasanga?



coordinate (WGS84) ::

Latitude (lat): 8°28'0"S

Longitude (lon): 31°9'0"E

(click magnifying glasses to zoom, arrows to pan)

related resources

Visiting Kasanga?

Hotel/Accommodation ::

[Book a hotel in Kasanga](#) (also searches for nearby accommodation)

Travel Guide ::

Buy a [travel guide for Tanzania](#) or create a personalized guidebook at [Offbeat Guides](#)

rental cars ::

[car rental offers](#) in more than 70 countries

GPS waypoint ::

download a [GPX waypoint \(PoI\)](#) of Kasanga for your GPS receiver

[kasanga.at](#) available? ::

check whether the domain name [kasanga.at](#) is available for registration



search

place name

Kasanga

SEARCH

place details

Kasanga (Tanzania)



Kasanga is a populated place in Tanzania. An overview map of the region around Kasanga is displayed below.

Search for hotels in or around Kasanga

regional and 3d topo map of Kasanga, Tanzania ::



Ads by Google

Hannover Messe 2009

Find out more on exhibition grounds admission fees & travel deals!

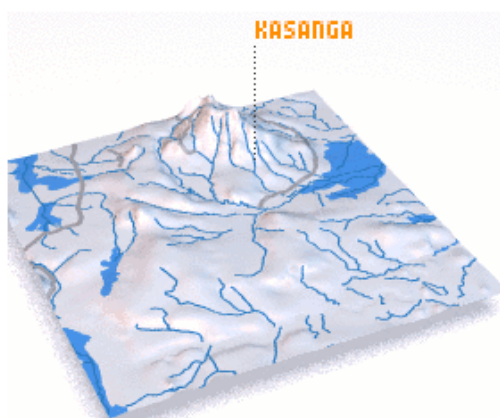
www.hannovermesse

airports close to Kasanga, Tanzania ::

The closest airport is DAR - Dar Es Salaam Mwalimu Julius K Nyerere Intl, located 168.0 km east of Kasanga. More nearby airports include ZNZ - Zanzibar 198.8 km north east, IRI - Iringa 223.0 km west, DOD - Dodoma 245.2 km north west,

places near Kasanga, Tanzania ::

// 7.4km to Bunqu // 9.2km to Singiza [all distances 'as the bird flies' and approximate]



Places with similar names to Kasanga, Tanzania ::

- // Quizunqa (AO) //
- Quizenque (AO) // Quizenqa (AO) // Quizenqa (AO) // Quizenqa (AO) //
- Quizanqa (AO) // Quizanqa (AO) //
- Quizanqa (AO) // Quizanqa (AO) //
- Quizanqa (AO) // Quizanqa (AO) //
- Quizanqa (AO) // Quizanqa (AO) //
- Quissunqa (AO) //

Disclaimer ::

Information on this page comes without warranty of any kind

overview map

Where is Kasanga?



coordinate (WGS84) ::

Latitude (lat): 7°12'0"S
Longitude (lon): 37°43'0"E
(click magnifying glasses to zoom, arrows to pan)

related resources

Visiting Kasanga?

Hotel/Accommodation ::

Book a hotel in Kasanga (also searches for nearby accommodation)

Travel Guide ::

Buy a travel guide for Tanzania or create a personalized guidebook at Offbeat Guides

rental cars ::

car rental offers in more than 70 countries

GPS waypoint ::

download a GPX waypoint (PoI) of Kasanga for your GPS receiver

kasanga.at available? ::

check whether the domain name kasanga.at is available for registration

9. City Names database (nona.net)



EuroGeoNames

Search Result Map Query Help & Info

Welcome to the EuroGeoNames Reference Application

This application illustrates the capabilities and the benefits of the EuroGeoNames Web Service. The Reference Application finds and locates names on the map that represent all kinds of geographical objects. The service provides you with the official spelling, the spelling in other languages and information about pronunciation, gender etc. Read more about the service, the project and the partners on the project website <http://www.eurogeonames.com>

Enter search term :

Search

▶ [Advanced Options](#)

▶ [Output Options](#)

Reset Search options



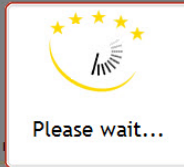
© 2008/2009 EuroGeoNames. Design and development: [GeoTask AG](#). View our [Terms of Service](#). For technical assistance, please contact our [support team](#).



Result list

The result list shows the available information about a name. Please read notes at the end of this page.

No results. Execute search first [Display Results on the Map](#) [Refine Search](#)
[Display All Available Attributes](#) [New Search](#)



© 2008/2009 EuroGeoNames. Design and development: [GeoTask AG](#). View our [Terms of Service](#). [Contact our support team](#).



10. Euro Geo-Names






UNGEEN World Geographical Names

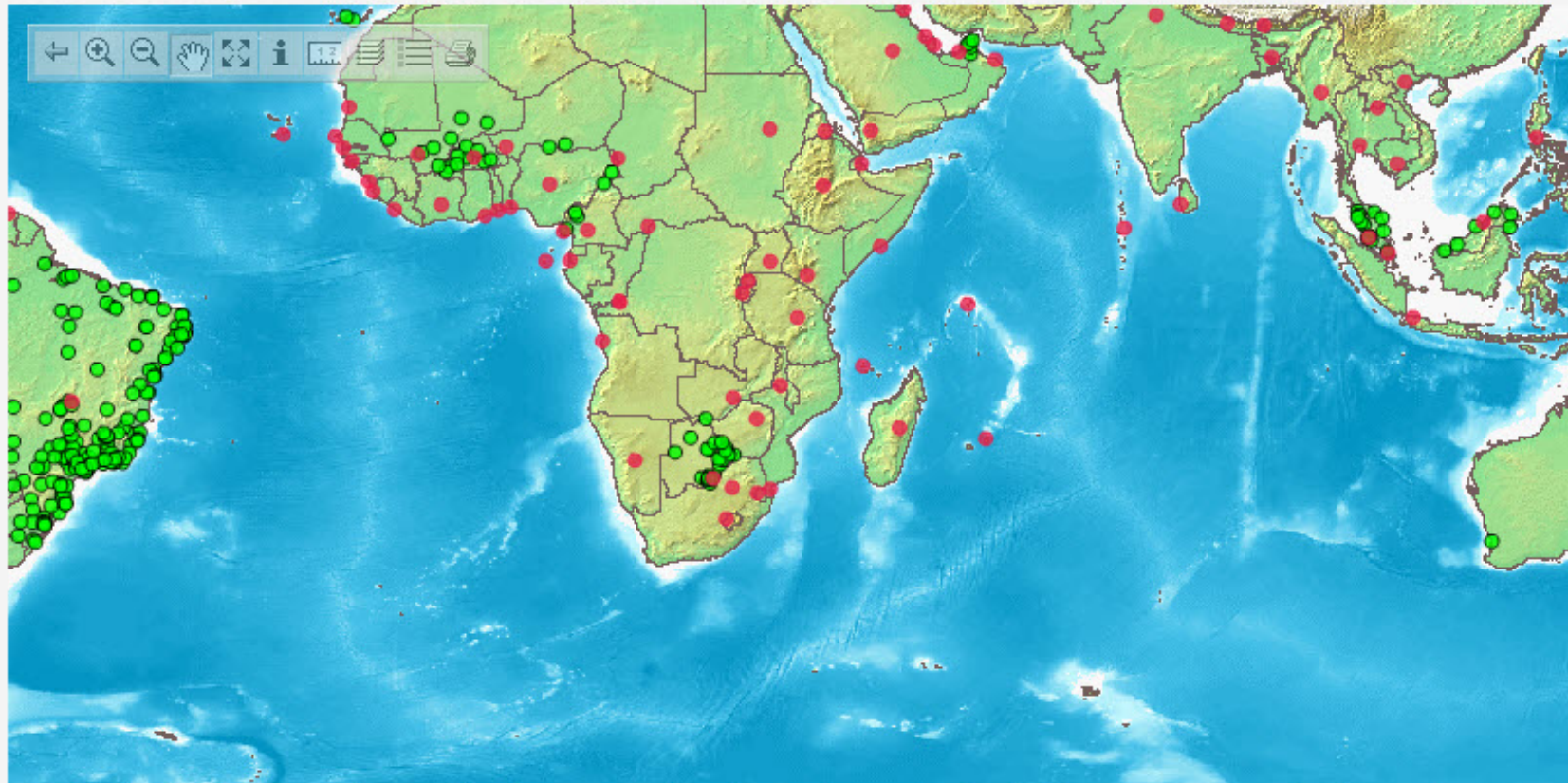
[Geographical names](#) | [FAQ](#) | [Feedback](#) | [Contact](#)

11.UN

Multilingual, multiscriptural dataset of names of countries, capitals and major cities.

Select a country 

Please roll over a country to see the country name in the UN languages or over a city to see the city endonyms (where available and in romanized form only) and the English name.



Note: The boundaries and names shown and the designations used on this map do not imply official endorsement or acceptance by the United Nations

11. UN



Country names

Endonyms

Language	Short name	Formal name	
English	Kenya	the Republic of Kenya	i
Swahili	Kenya	Jamhuri ya Kenya	i

United Nations languages

Language	Short name	Formal name	
Arabic	كينيا	جمهورية كينيا	i
Chinese	肯尼亚	肯尼亚共和国	i
English	Kenya	the Republic of Kenya	i
French	Kenya (le)	la République du Kenya	i
Russian	Кения	Республика Кения	i
Spanish	Kenya	la República de Kenya	i

Capital and other major cities

- [نairobi](#) Lat: -1.25 | Long: 36.89

United Nations Languages

Language	City name	Source
Arabic	نairobi	UN terms
Chinese	内罗毕	UN terms
English	Nairobi	UN terms
French	Nairobi	UN terms
Russian	Найроби	UN terms
Spanish	Nairobi	UN terms

11.
UN

Comparison of names servers for Kenyan national park names

Name	1.GNS	2.Geonames	3.Getty	4.Fuzzy	5.ADL	6.EarthS	7.World Gaz	8.Global	9.CityNames
Arabuko NP	x	x	-	x	-	-	-	-	-
Bisanandi NP	-	-	-	x	-	x	-	-	-
L.Bogoria NR	x	x	x	river	-	river	-	-	-
Kakamega FR	x	x	x	x	-	x	-	-	-
Kizingo	x	x	-	x	-	x	-	-	-
Losai NR	-	-	-	x	-	x	-	-	-
Maasai MaraNR	-	Masai	x	-	-	-	-	-	-
Murera Lodge	-	x	-	x	-	x	-	-	-
Namunyak NP	-	-	-	-	-	-	-	-	-
Naro MoruLodge	-	-	-	x	-	x	-	-	-
Oldoinyo NP	x	x	x	x	-	x	-	-	-
Shimba NR	x	x	-	-	-	-	-	-	-
<u>Ugingo I.</u>	x	x	-	-	-	-	-	-	-