



Ghana  
Statistical Service

# DATA FOR EFFECTIVE PANDEMIC RESPONSE

**BY: Selaseh Akaho**

*Geospatial Data Scientist,*

*GIS Section, Ghana Statistical Service*

# COVID 19 Ghana's Story

In December, 2019

the first cases of COVID-19 reported - China

On 12 March,

Ghana confirmed first two cases

Trend of infection

Imported to Contact within 2 weeks

On 30 March – April, 2020

the partial lock down of Accra and Kumasi.

## Data that makes a difference

Data are disaggregated into:

- *Age*
- *Sex*
- *Education*
- *Employment*
- *Location*
- *Geography*
- *Disability*
- *Migration Status*
- *Wealth quintile*
- *District level*
- *Regional level*
- *National level*

### DATA SOURCES

- **SURVEY**
- **BIG DATA**
- **CENSUS**
- **ADMINISTRATIVE**
  - ❖ Ministries, Department and Agencies (MDAs)
  - ❖ Metropolitan, Municipal and District Assemblies (MMDAs)
  - ❖ Other Government Institutions



# Quick Data Access & Visualisation

SYMPTOMS AND CARE | GHS UPDATES | DASHBOARD-(DESKTOP) | DASHBOARD-(MOBILE)

## Ghana Covid 19 Hub

Emergency - 112  
General Information - 31

NCA Complaints Number (Toll Free)  
0800 110 622

HOTLINE  
0307 011 419 | +233 55 843 9868  
+233 50 949 7700

GH COVID-19 TRACKER  
\*769#

Confirmed Cases	Responding to Treatment	Recovered	Deaths
43,841	1,325	42,246	270

### COVID-19 Household and Jobs Tracker

- 3,265 Households involved in the study
- 77% Households experienced income loss
- 9% Received some assistance

MORE RESULTS →

### GHANA COVID-19 BUSINESS TRACKER

How COVID-19 is affecting firms in Ghana

Results from the Business Tracker Survey

Logos: THE WORLD BANK, GHANA STATISTICAL SERVICE, UNITED NATIONS DEVELOPMENT PROGRAMME, UN IDIR

## GHANA COVID 19 MONITORING DASHBOARD

GHANA STATISTICAL SERVICE

11/03/2020

378,735 samples tested  
8.88% positive  
Last updated: 28th July, 2020, 6 pm

Cases	Deaths
43,717	270
Treatment	Recovered
1,664	41,843

Facility Mgt: 7,761 | ICU: 18

esri Partners

The dashboard features a 'Cumulative Case Count' line chart showing daily, new, and active cases from March to July. A map of Ghana displays hotspots for cases, with a legend for Treatment (red), Dead (grey), and Recovered (green). A secondary line chart shows counts for Cases, Active, Recovered, and Deaths from April to July. A summary panel on the right provides key statistics and a 'Hotspots' legend. The bottom of the dashboard includes navigation tabs for Cases, Region, and Districts, and a 'Vulnerability Indicators' section.

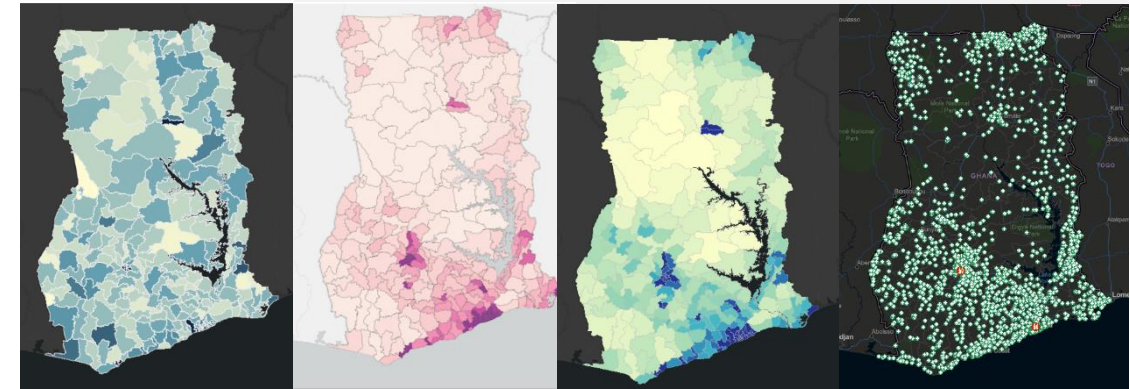
<p>COVID_19_GHS</p> <p>This layer has real time updated data from Ghana Health Service on the COVID 19 cases in Ghana</p>	<p>GHANA HEALTH FACILITIES</p>	<p>GHANA 260 DISTRICTS</p>	<p>GHANA COVID 19 REGIONAL CASES</p>
---	--------------------------------	----------------------------	--------------------------------------

<p>StoryMaps</p>	<p>Dashboards</p>	<p>Experience Builder</p>	<p>Hub</p>
------------------	-------------------	---------------------------	------------

<https://ghcovid19-statsghana.hub.arcgis.com/>

# INSIGHT INTO THE EFFECT OF MOBILITY RESTRICTIONS IN GHANA USING ANONYMISED AND AGGREGATED MOBILE PHONE DATA

## POPULATION DISTRIBUTION



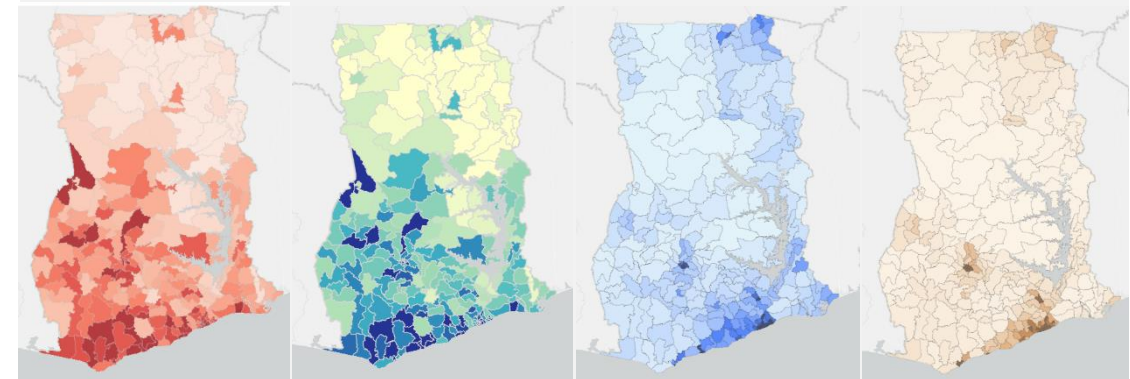
Estimated Population

Distribution of 60+ Population

Population Density

Health Facilities Across Ghana

## VULNERABILITY FACTORS



ONE ROOM HOUSES

MULTI HOUSEHOLDS SHARING ON ROOM

NO WATER FOR HAND WASHING

NO SOAP FOR HAND WASHING

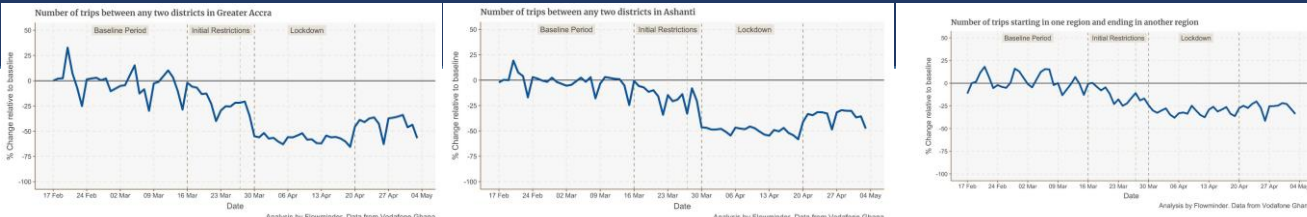
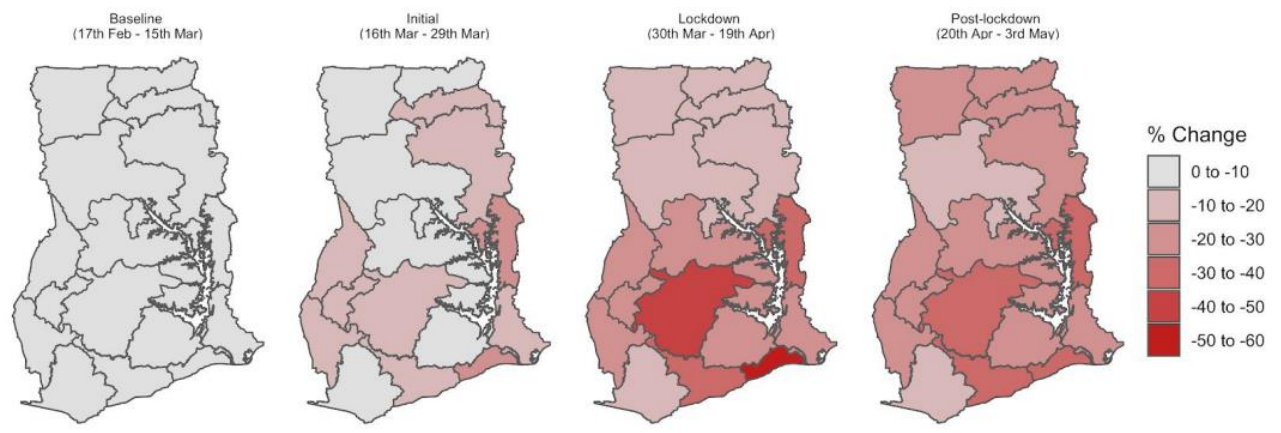


Figure 1: Percentage change in the number of trips between any two districts in Greater Accra, each day, relative to the baseline value.

Figure 2: Percentage change in the number of trips between any two districts in Ashanti, each day, relative to the baseline value.

Figure 7: Percentage change in the number of trips starting in one region and ending in another region, each day, excluding Greater Accra and Ashanti.

## Change in the number of trips between any two districts in each region



Analysis by Flowminder. Data from Vodafone Ghana

The observation on the dominant places for inter-region mobility engenders the determination of routes for increased surveillance to ensure reduced mobility. Specifically, the high mobility between Greater Accra and Eastern regions suggests the need for an enhanced restricted mobility between the two regions.

Professor Samuel Annim,  
Government Statistician, Ghana Statistical Service



Ghana  
Statistical Service

# Thank You

**Selaseh Akaho**

*Geospatial Data Scientist,*

*GIS Section, Ghana Statistical Service*

*Email: selasehakaho@gmail.com*

*Phone: +233 54 773 5716*

**Omar Seidu**

*Head, Demographic Statistics & SDGs Coordinator  
Demographic & Social Statistics,*

*Ghana Statistical Service*

*omar.seidu@statsghana.gov.gh*

*+233 24 483 8054*

**Victor Owusu**

*Member,*

*Social and Demographic Statistics Directorate*

*Ghana Statistical Service*

*victor.owusu@statsghana.gov.gh*

*+233 26 911 5330*



Ghana  
Statistical Service

Data for Effective  
Pandemic Response