

SNIT- SDI Chile

Ministry of National Assets
Macarena Perez Garcia - Agosto 2020

www.ide.cl

Macarena Pérez García
Secretaria Ejecutiva SNIT-IDE Chile



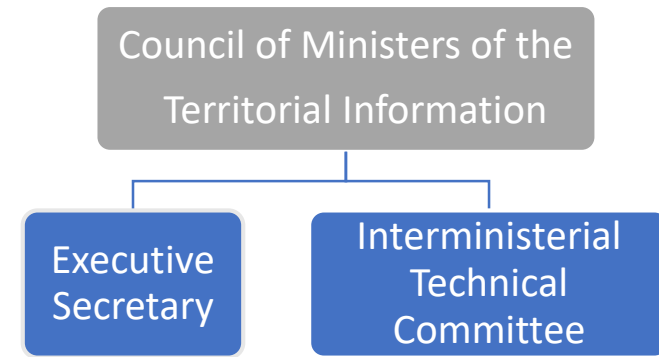
Ministerio de
Bienes
Nacionales

Gobierno de Chile

The SNIT is the **National System of Coordination of Territorial Information**. This is a permanent inter-institutional coordination mechanism for the management of public territorial information in the country, composed of the State institutions generating and using this information. It was created through the D.S N ° 28/2006 of the Ministry of National Assets.

To maximize the benefits derived from the use of territorial information, it is necessary to work under the concept of a **Geospatial Data Infrastructure (SDI)**.

**Coordination,
through working
groups, thematic
areas, regional and
sectoral coordination**



COVID-19 TERRITORIAL VIEWER, Ministry of National Assets (IDE Chile)

From the Ministry of National Assets, through the Executive Secretariat of the National System for Territorial Information Coordination (SNIT - IDE Chile), the commitment was made to facilitate access to the georeferenced information generated by the Ministry of Health, related to COVID-19. Thus, the COVID-19 Territorial Viewer was conceptualized and developed as a platform open to all citizens, displaying territorial information at the national, regional, communal (municipality) and neighborhood levels, with the aim of providing the community with more information regarding this health emergency and its behavior in the territory. Thanks to the COVID-19 Territorial viewer, people have more information and thus can make better decisions, be more responsible and, ultimately, focus resources where they are most needed.

The Ministry of National Assets has implemented the COVID-19 Territorial Viewer, which contains:

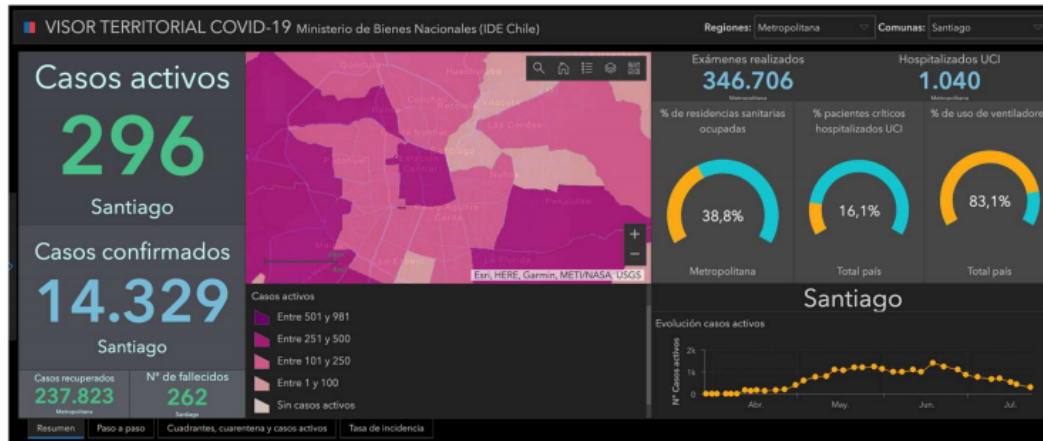
- **Contagion quadrants:** Reported Positive PCR cases and “Probable” cases within a radius of one square kilometer.
- **Tables with statistics of the country and by region:** Data of confirmed total cases, new cases, critical patients, deceased patients, recovered patients and total tests performed.
- **Active cases by commune:** Total number of active infected persons per commune.
- **Communes under quarantine:** Communes that are under quarantine
- **Communes with sanitary coordination:** Communes subject to sanitary coordination.
- **Daily advances:** Daily advances from the statistics mentioned above.
- **Implementation of the Step-by-Step Plan:** Status of the implementation of the Plan at the communal (municipality) level.

In addition, a summary of what people can or cannot do in each of the stages and if they will be moving from one stage to other in the short term.

- Step 1:** Quarantine
- Step 2:** Transition
- Step 3:** Preparation
- Step 4:** Initial opening
- Step 5:** Advanced opening

COVID-19

The Response of the Geospatial Information Management Community



<https://www.visorterritorial.cl/>

The dynamic viewer incorporates the official data according to the Epidemiological Report of the Ministry of Health:

- Confirmed number of cases georeferenced to quadrants of 1 x 1 square kilometers calculated by the Emergency Territorial Information Management Team of the Department of Risk Management in Emergencies and Disasters of the Ministry of Health.
- Information base georeferenced, coming from the Obligatory Epivigila Notification System of the Epidemiology Department of the Ministry of Health.
- Geospatial Information on the Administrative Political Division of the country, provided by the Under-secretariat for Regional and Administrative Development of the Ministry of the Interior.

The COVID-19 Territorial Viewer of the Ministry of National Assets is used as one of the main platforms for monitoring the pandemic in Chile.

This viewer is a didactic platform that makes data transparent, providing valuable information to citizens. It is also a key tool for decision-makers through the delivery of statistical tables, achieving the dissemination of valuable information in an interactive and simple way.

The COVID-19 Territorial Viewer is a useful tool that has enabled and supported the work of oversight, as well as targeting the measures of the municipalities in the different neighborhoods of the country. This platform has been essential for planning actions in the different territories of the country, to take the necessary measures where there is a greater number of infections and with regard to future actions in the context of this pandemic, and the measures that, as a country, will be implemented, giving a territorial perspective to this phenomenon.