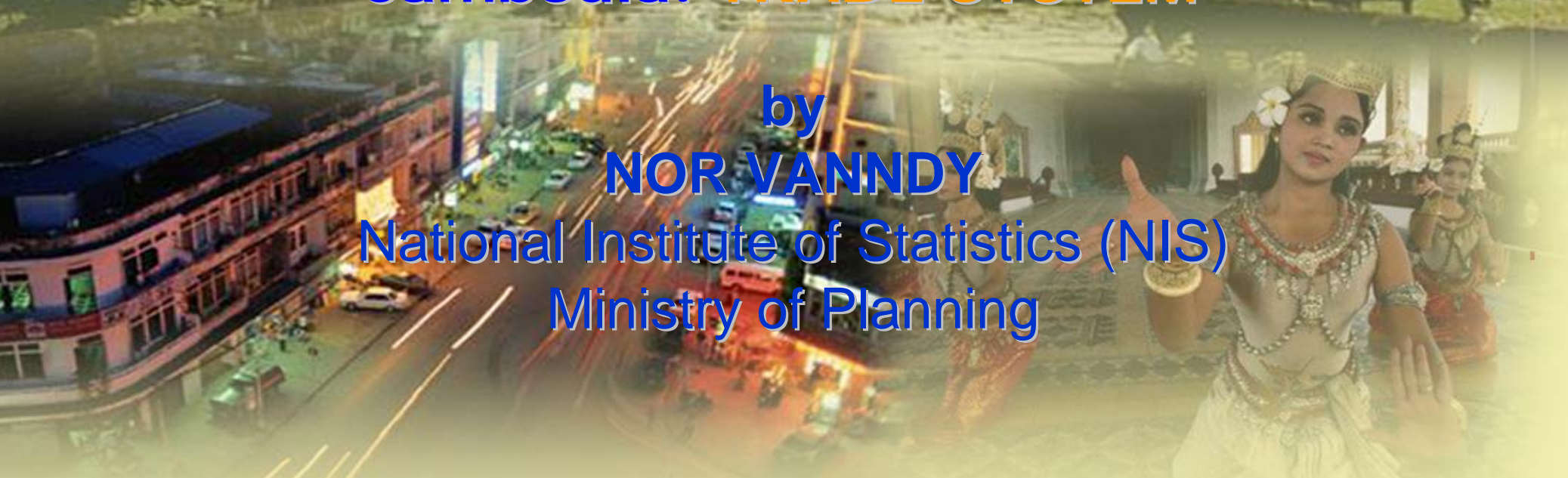




The Current Practices of IMTS in Cambodia: **TRADE SYSTEM**

by
NOR VANNDY
National Institute of Statistics (NIS)
Ministry of Planning





Outline

- ◆ Trade System
- ◆ Statistical Territory
- ◆ Inclusion of Goods entering/leaving from/to the ROW
- ◆ Trade Statistics by Mode of Transport



Trade System and Statistical Territory

Using Special Trade System with relax definition. Recording all goods enter the country (economic territory) for or leave it after inward processing and all goods that enter or leave an industrial Free Zone.

For instance, imports to a warehouse for inventory are not included in the imports whereas imports in an industrial warehouse (free zone) are included in the imports.



Inclusion of Goods enter/leave from/to ROW

- Premises for customs warehousing is excluded.
- Premises for inward processing is included.
- Industrial free zones is included.
- Commercial free zones is included.

Record transaction with Custom Procedure Code (CPC)

Trade Statistic by Mode of Transportation

At the current movement, the NIS has not yet compiled the trade statistic by Mode of Transport. Because of the collected data is not available.

But custom database is available on PC, but for internal use only. The custom's import/export data by Mode of Transport is available only for by Air, Water, Road (excl. Railway).

For import of goods are compiled by country of origin

For export of goods are compiled by country of Last known destination.



National Institute
of Statistics

Ministry of Planning

CAMBODIA

Thank You