



**Workshop for Developing Countries on the Revision of the
Recommendations for International Merchandise Trade Statistics**
Bangkok, 9 – 12 September, 2008

Data sources

By Mr. Le Hoang Lan

Trade, Service and Price Statistics Depart.

GSO, MPI of Vietnam



Content

- I. GSO Overview
- II. Data sources
- III. Problems and comments



I. GSO overview

- A concentrated statistical system
- Under the MPI from 2007
- Organization
 - GSO headquarter located in Hanoi
 - PSOs located in 63 provinces/cities
 - DSOs belongs to PSO in the districts (about 659).



I. GSO overview (*cont.*)

- Legislation determining the functions, responsibilities and authorities of GSO: Statistics Law, Government's Decree (2003)
- Main function and responsibility
 - Managing statistical operations nationwide
 - Organizing statistical activities
 - Compiling and disseminating statistics belong to the National System of Indicators
- IMTS are compiled by the Department of Trade, Service and Price Statistics



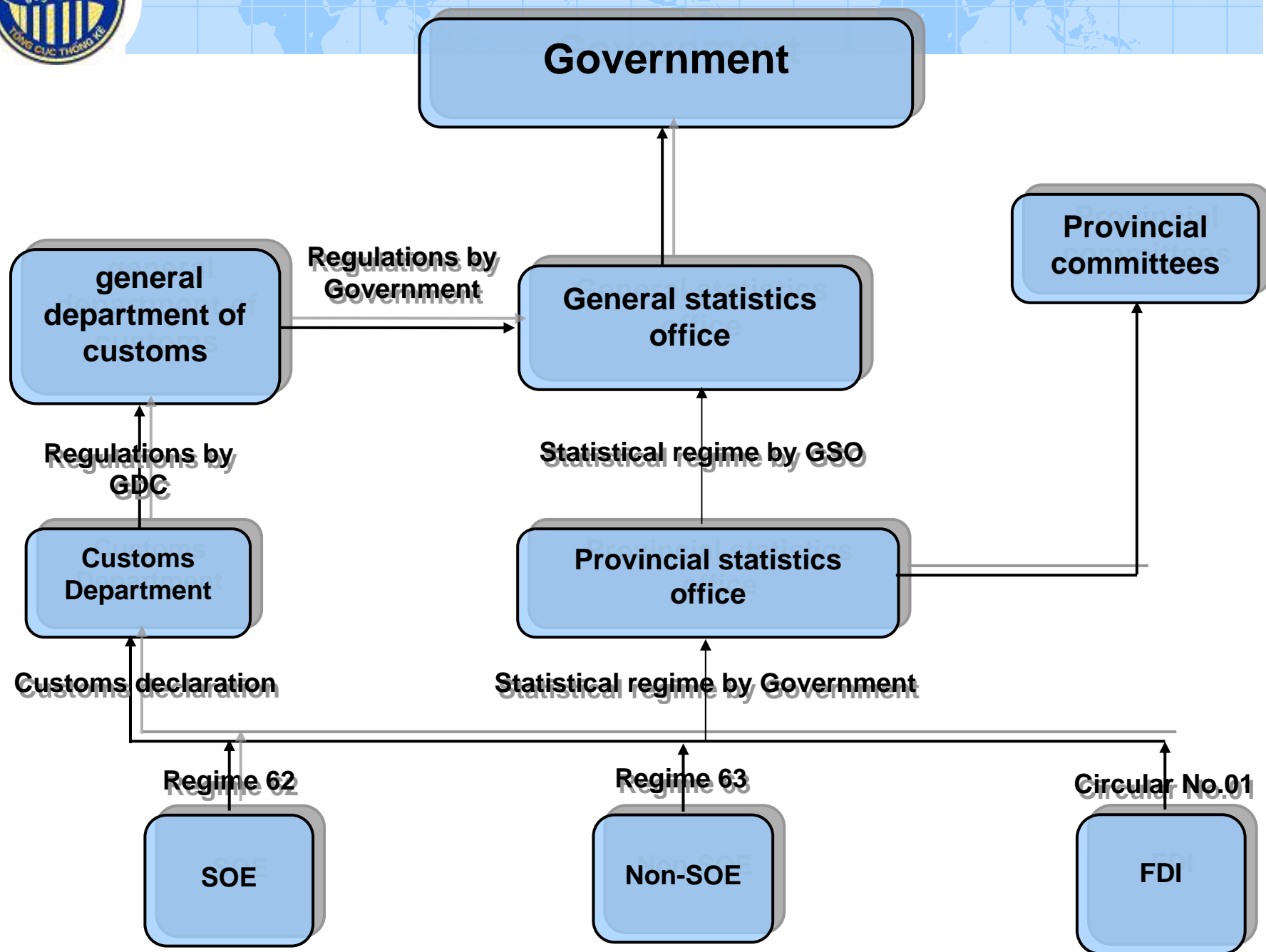
I. GSO overview *(cont.)*

- National level: GSO and GDC involved to produce the IMTS
 - GSO is mandated to compile and disseminate IMTS nationally and internationally based on GDC's data and other sources
 - GDC is responsible for data collecting based on the customs declaration forms, checking and providing aggregated data to the GSO.



I. GSO overview *(cont.)*

- Local level: PSOs is in charge of compiling IMTS of that provinces/cities
 - Serving for the Local Government only
 - Data collection based on the statistical regime apply for enterprises, issued by the GSO
 - Data checking and providing for the local government and GSO





II. Data sources

- National level: two data sources of which customs data is major one
 - ▶ Customs data: provided by the GDC
 - Ten daily: preliminary aggregated data by papers with total value/30 major commodities (quantity, value, no code).
 - Monthly: the same tables above and other aggregated data (50 partner countries by major commodities...) by papers.



II. Data sources (*cont.*)

- Annually: two FoxPro files of aggregated data including 6 fields (HS code 6 digits, commodity description, unit of quan., quantity, value and partner country), electronically, 14 -15 months after reference year



II. Data sources (*cont.*)

- ▶ Non-customs data:
 - Enterprise's report: exported crude oils which are co-mined in the highsea with Malaysia and declared by Malaysian customs entry.
 - Enterprise's survey: conducting 5 yearly by the GSO for collecting the I and F data of CIF imported goods.



II. Data sources (*cont.*)

- Local level: enterprise reports
 - ▶ All enterprises located in that province/city having ex/im activities are required to report to PSOs
- Monthly: report consists of total value, major commodities, main partner countries, revised data for previous month and estimate for reference month
- Annually: enterprises have to report total value of ex/im, all commodities classified by partner country



II. Data sources (*cont.*)

- ▶ After data processing, PSOs report aggregated data:
 - To the GSO: for reference (*not using for national data*) and stored in provincial database
 - To the Provincial government agencies: using for calculating provincial GDP and planning.



III. Problems and comments

- Problems of custom data
 - ▼ Detail level of quarterly and annually data do not meet GSO/PSO requirements
 - ▼ The delay providing detailed data to GSO annually.
 - ▼ Data quality controls should be interested in.



III. Problems and comments

- Problems of non-customs data
 - ▼ Difficult to collect the data on the bunkers, stores, ballast and dunnage supplied without declaration forms
 - ▼ The time of recording and valuation of transaction without customs control.
 - ▼ Updating of enterprises list having that activities.



III. Problems and comments (*cont.*)

● Comments

- ▼ The more detailed guide should be provided in the IMTS: Compiler Manual on non-custom data collection/compilation



Thank you !