

FIT-FOR-PURPOSE DEMOGRAPHIC DATA:

THE HUMAN MORTALITY DATABASE PROJECT

Domantas Jasilionis

Max-Planck Institute for Demographic Research, Rostock, Germany

The Human Mortality Database Project Executive Board



THE HUMAN MORTALITY DATABASE [WWW.MORTALITY.ORG]: *EVIDENCE BASIS FOR COMPARATIVE MORTALITY RESEARCH*

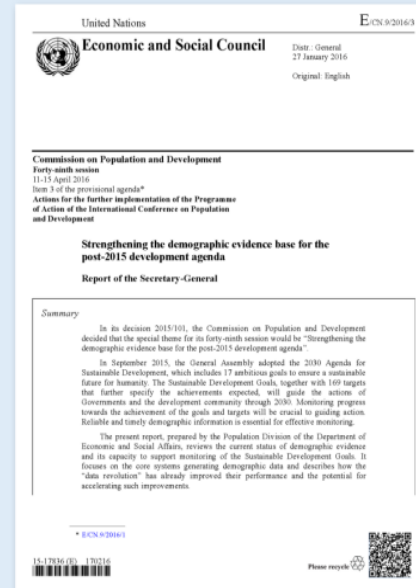
- **First launched in 2002**; a leading international data resource on mortality
- **49 countries or areas, 70,000+ users; 10.000+ citations**
- **International recognition**

Key principles:

- State of art demographic methodology
- Comparability across time and space
- Attention to quality issues and documentation
- Open data standards

Advantages:

- Continuous series without gaps or ruptures
- Uniform methodology for all countries
- Standardized inputs and outcomes: by age, year, cohort

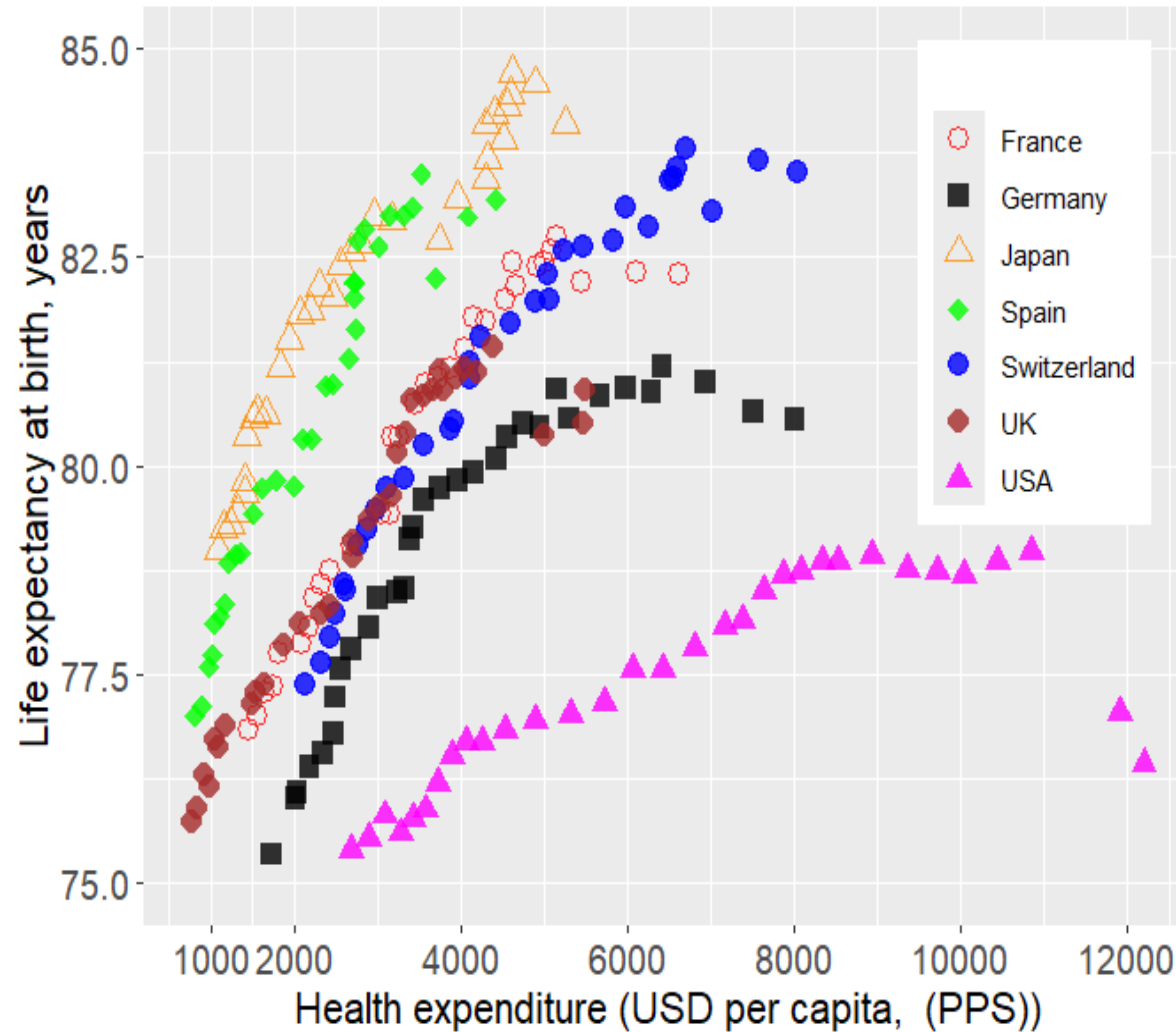


Report of the Secretary-General prepared for the Commission on Population and Development in 2016:

The Human Mortality Database, created by the University of California at Berkeley and the Max Planck Institute for Demographic Research, contains time series of national life tables for 37 countries or areas having virtually complete vital statistics and census enumerations. It also contains data on registered deaths by age and sex, registered births and enumerated populations. A uniform method was used to construct the life tables, ensuring consistency over time and across countries. The database is accessible online and is the **best source on changing mortality patterns in developed countries**.

COMPARATIVE EVIDENCE FROM THE HUMAN MORTALITY DATABASE

LONGEVITY SHORTFALLS DESPITE HIGH HEALTH CARE SPENDING



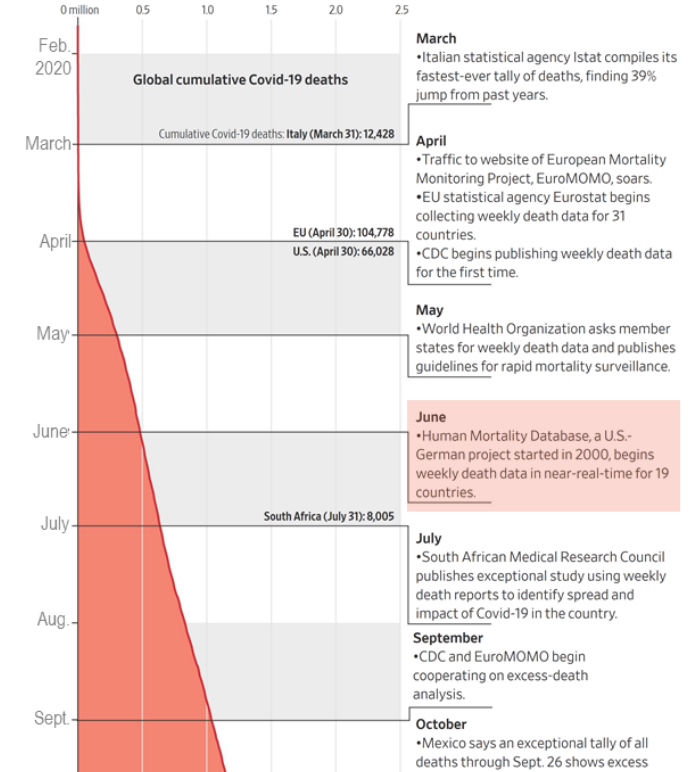
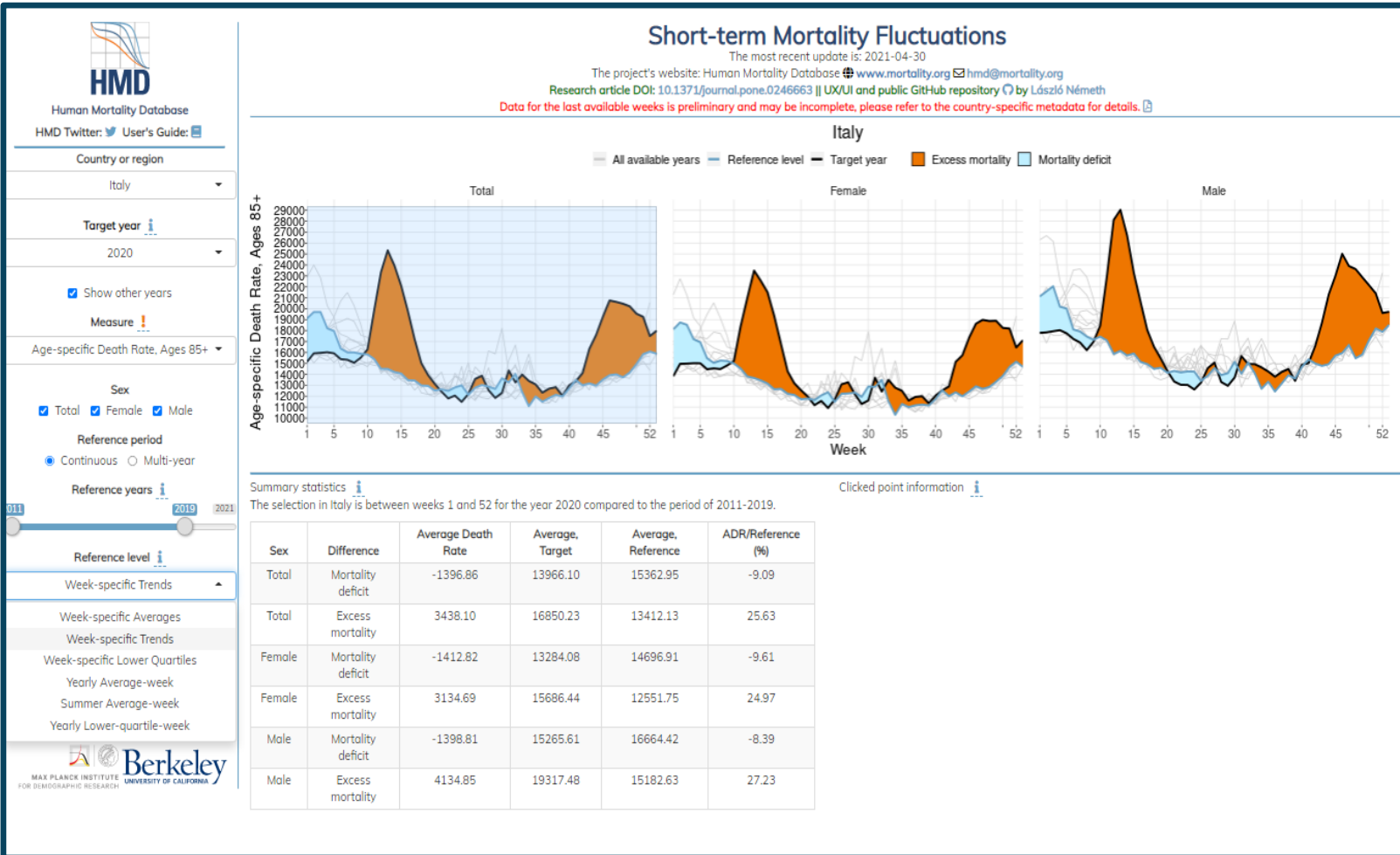
European Journal of Epidemiology (2023) 38:839–850
<https://doi.org/10.1007/s10654-023-00995-5>

The underwhelming German life expectancy

Domantas Jasilionis¹ · Alyson A. van Raalte² · Sebastian Klüsener³ · Pavel Grigoriev⁴



<https://mpidr.shinyapps.io/stmortality/>



Covid-19 Is Speeding Up How Deaths Are Recorded

Daniel Michaels

Jan. 23, 2021 5:30 am ET

THE WALL STREET JOURNAL.

Source: Johns Hopkins CSSE (deaths); the organizations (ways to register deaths)

GROWING CHALLENGES

- **Uncertainties in migration and population estimates**
- **Inconsistent population definitions**
- **Quality of administrative data**
- **Data protection regulations**
- **Coverage issues due to military conflicts and wars**



@ HMDatabase
Human Mortality Database

THANK YOU!

