

2020 Census Round- UNFPA Support

53rd UN SC Side event on census (21 Feb 2022)

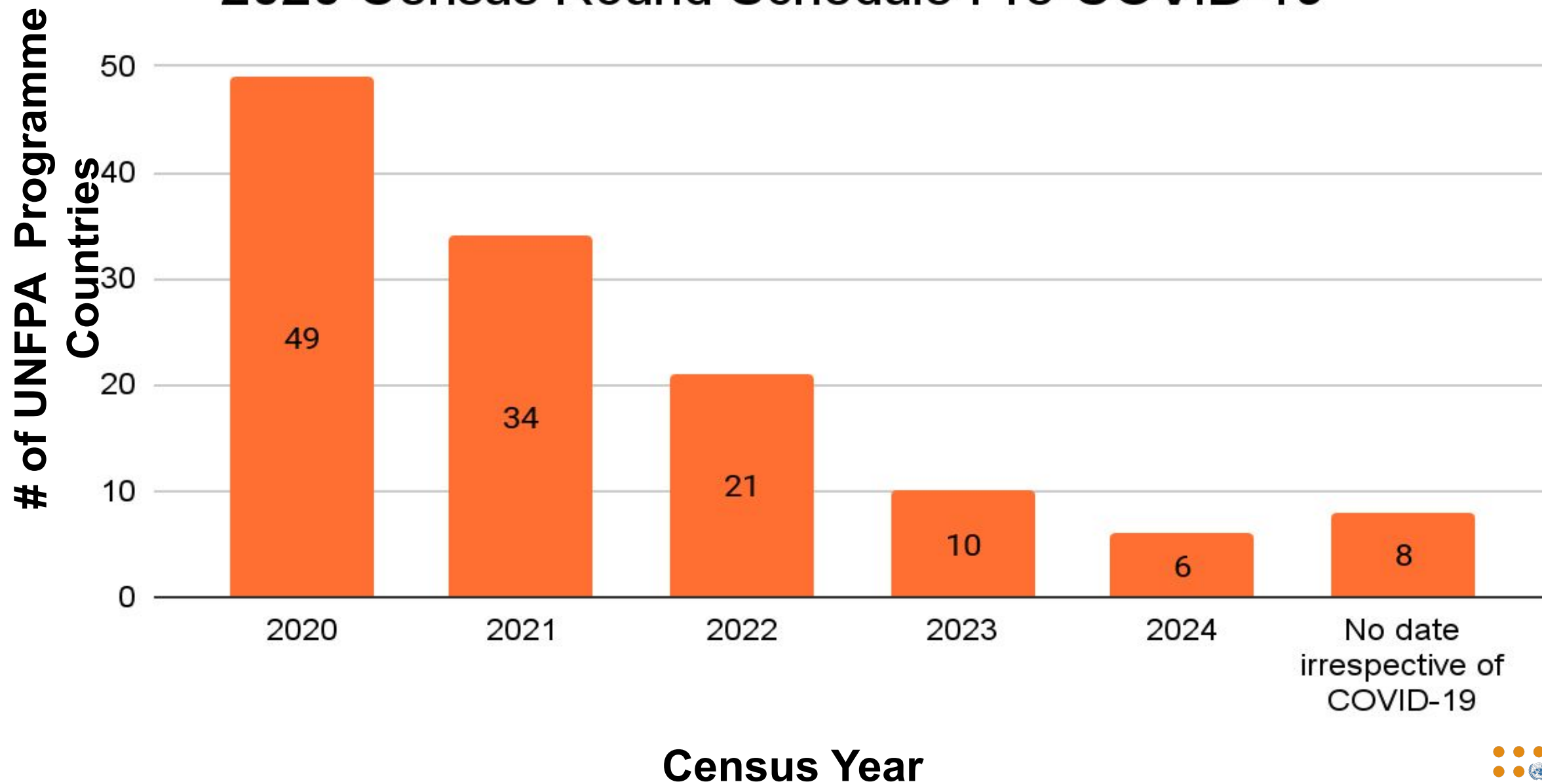
*Tapiwa Jhamba
Population and Development Branch, UNFPA*



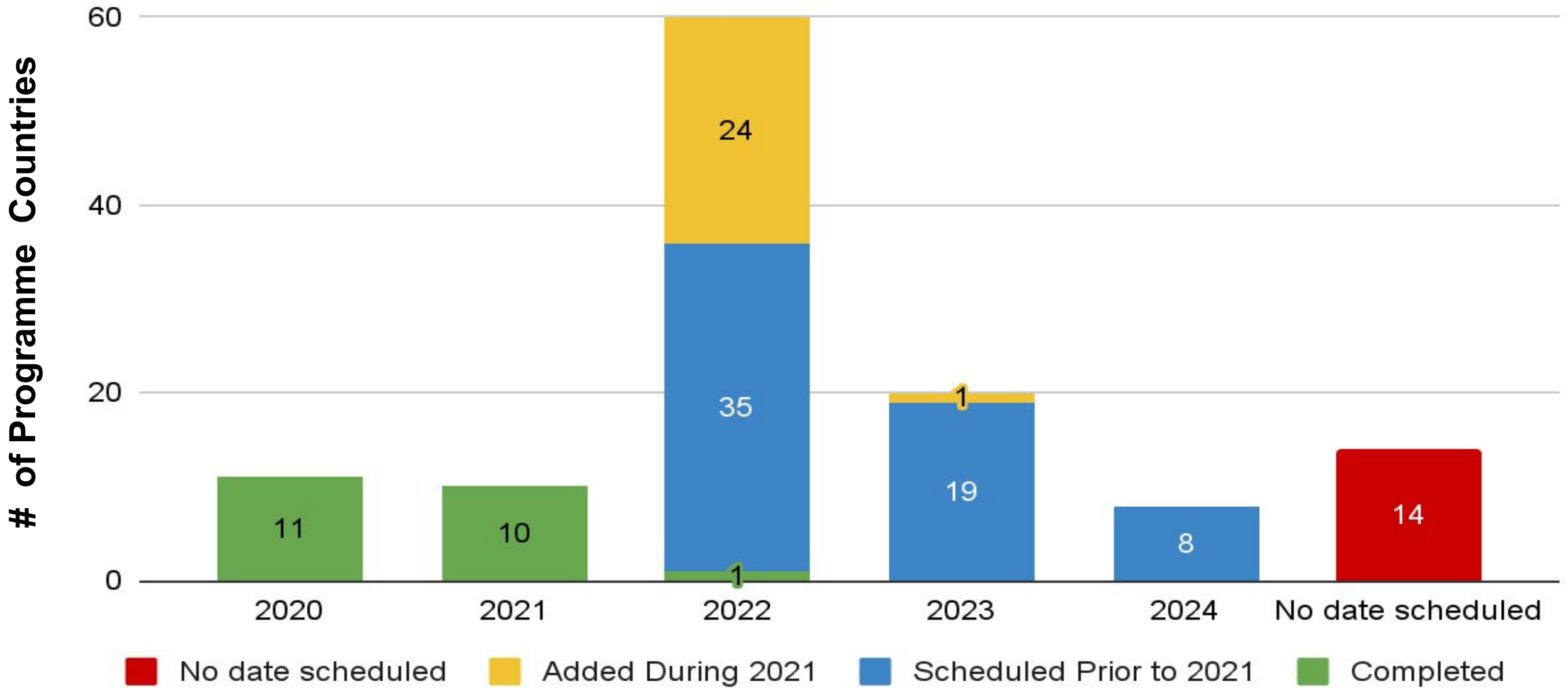
2020 Census Round (2015-2024) Context

- New development frameworks with new data needs
- New census technologies - digitization and GIS
- New data governance needs
- Funding challenges
- Capacity gaps
- Conflict, instability, mobility
- **Massive impact of COVID-19**

2020 Census Round Schedule Pre-COVID-19

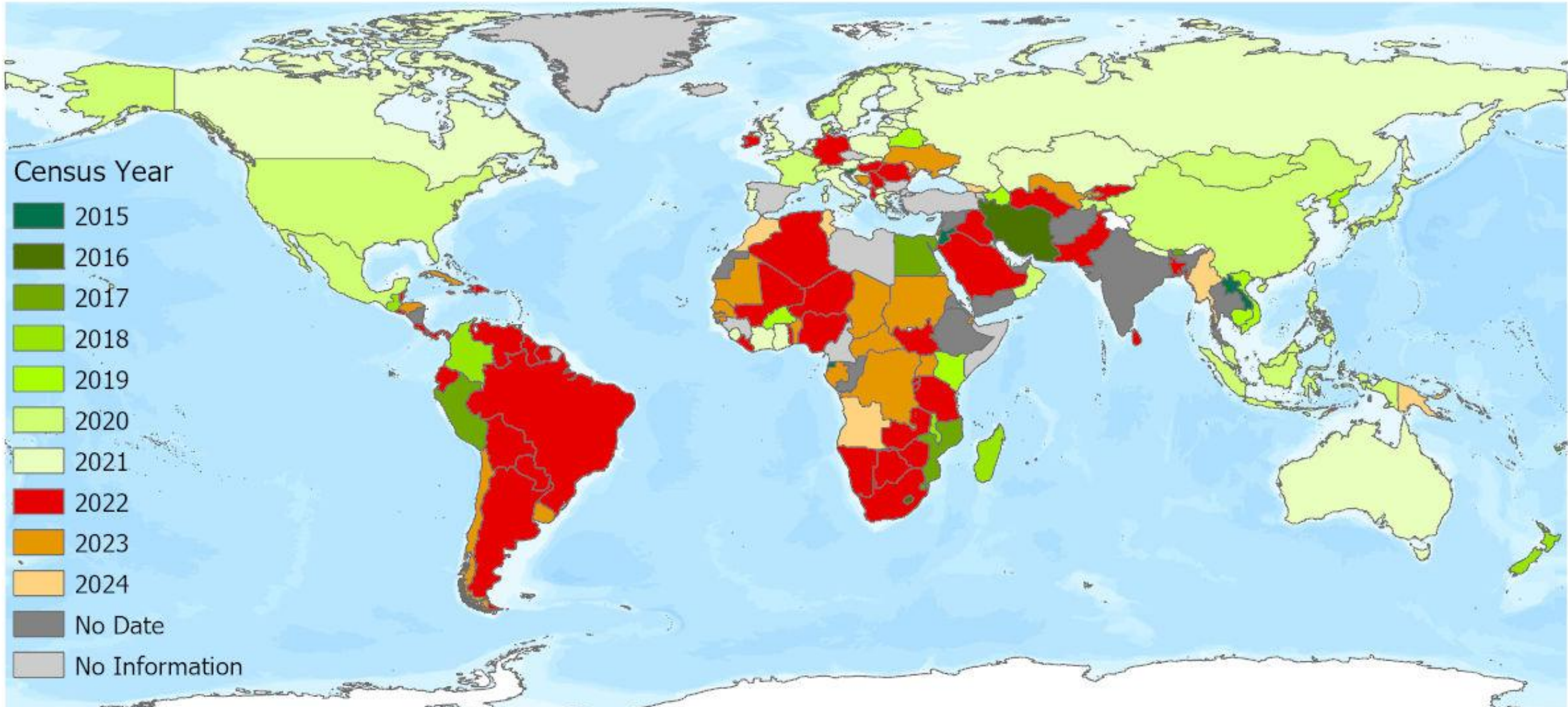


Current Census Schedule



Census Year

2020 Census Round Schedule



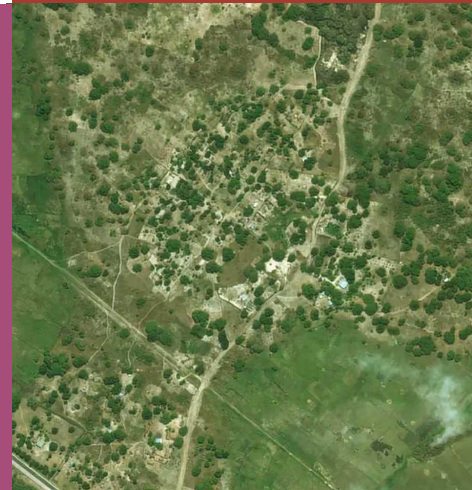
Modernizing Census - UNFPA Priority

Handheld devices

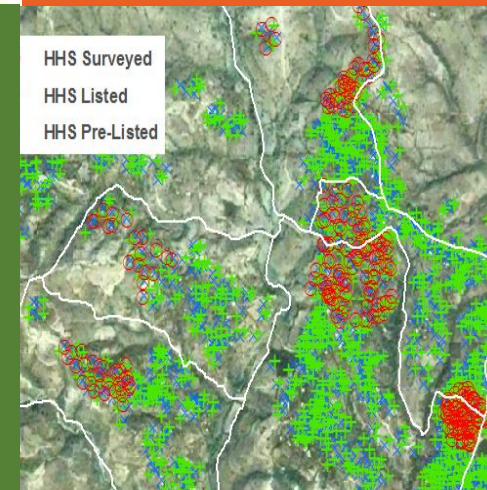


Digital cartography & use of satellite imagery

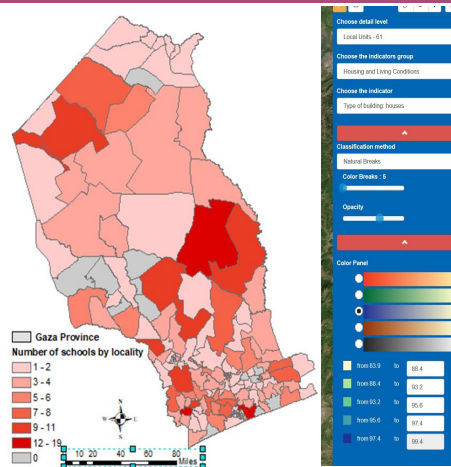
Mixed methods



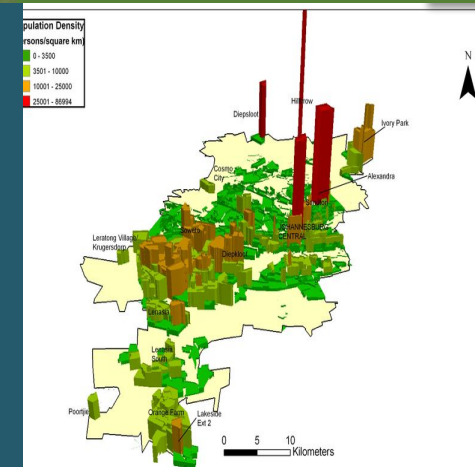
GIS to improve census quality - Real-time monitoring



GIS in census, analysis & dissemination



Wider use of census data- e.g. to generate SDG data



Population estimates, where needed

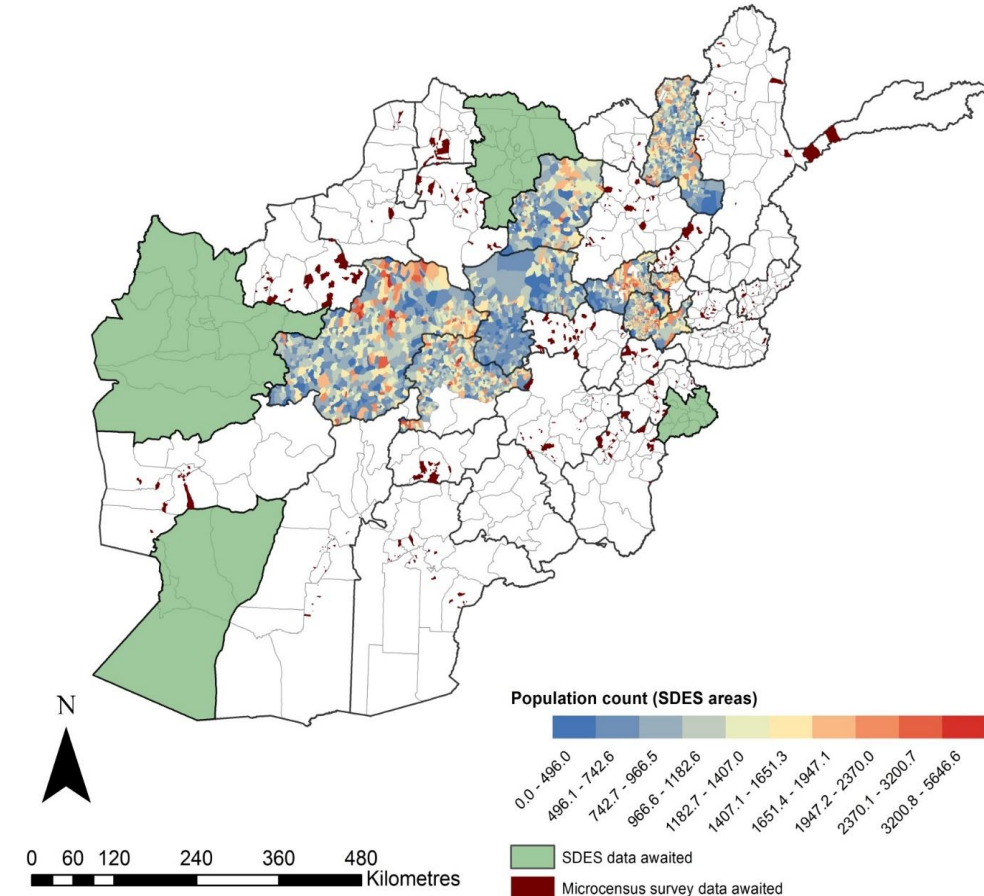
Model Population Estimates

Afghanistan (partial): 2015 census covered parts of the country; for the remainder WorldPop and UNFPA generated model population estimates (first case)

Burkina Faso (partial): Model population estimates generated for limited areas not enumerated in 2019

South Sudan- (full coverage)- Population estimation survey completed for the whole country in 2021.

More countries requesting population estimates to complement census .



Improving use of census data for impact

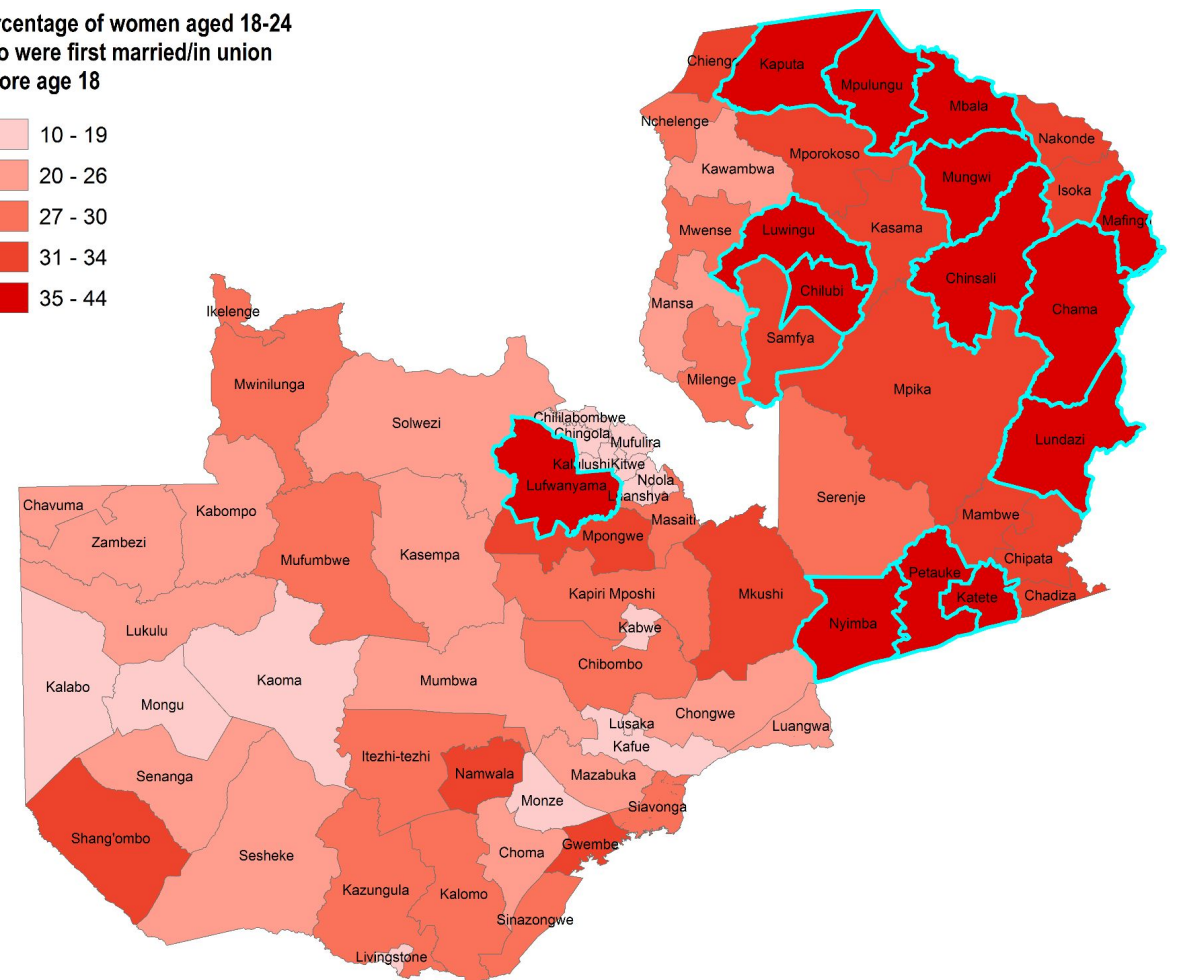
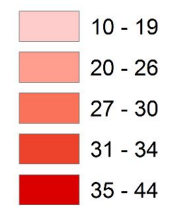




Visualizing indicators- e.g. SDGs

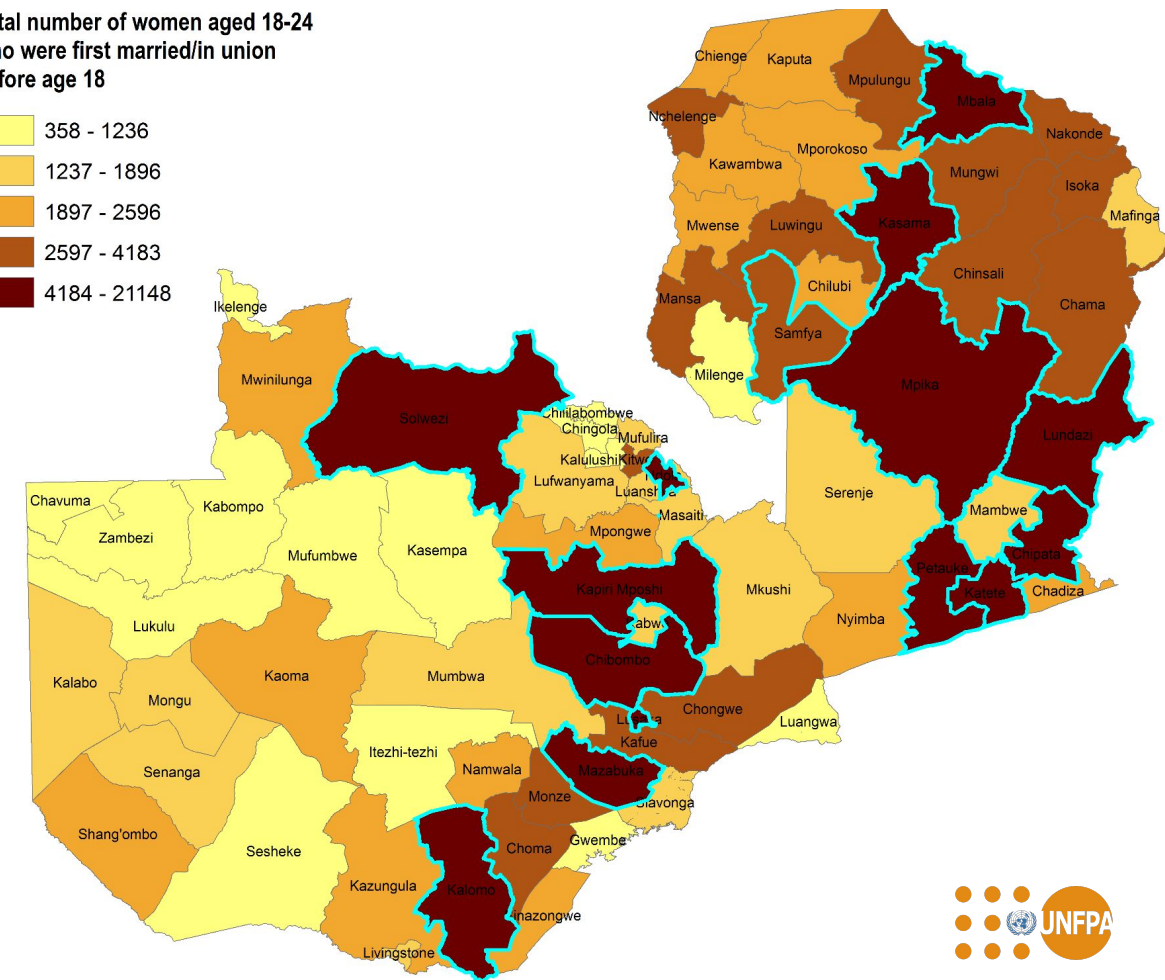
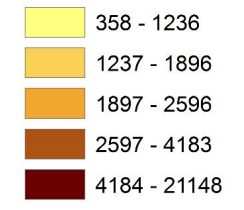
Child Marriage (%)

Percentage of women aged 18-24 who were first married/in union before age 18



Child Marriage (Number)

Total number of women aged 18-24 who were first married/in union before age 18



Mapping COVID-19 Population Vulnerabilities

COVID-19 Population Vulnerability Dashboard



- Census Data
- Population Estimates
- Health Sector Readiness
- COVID-19 Real-time Updates

Census Data

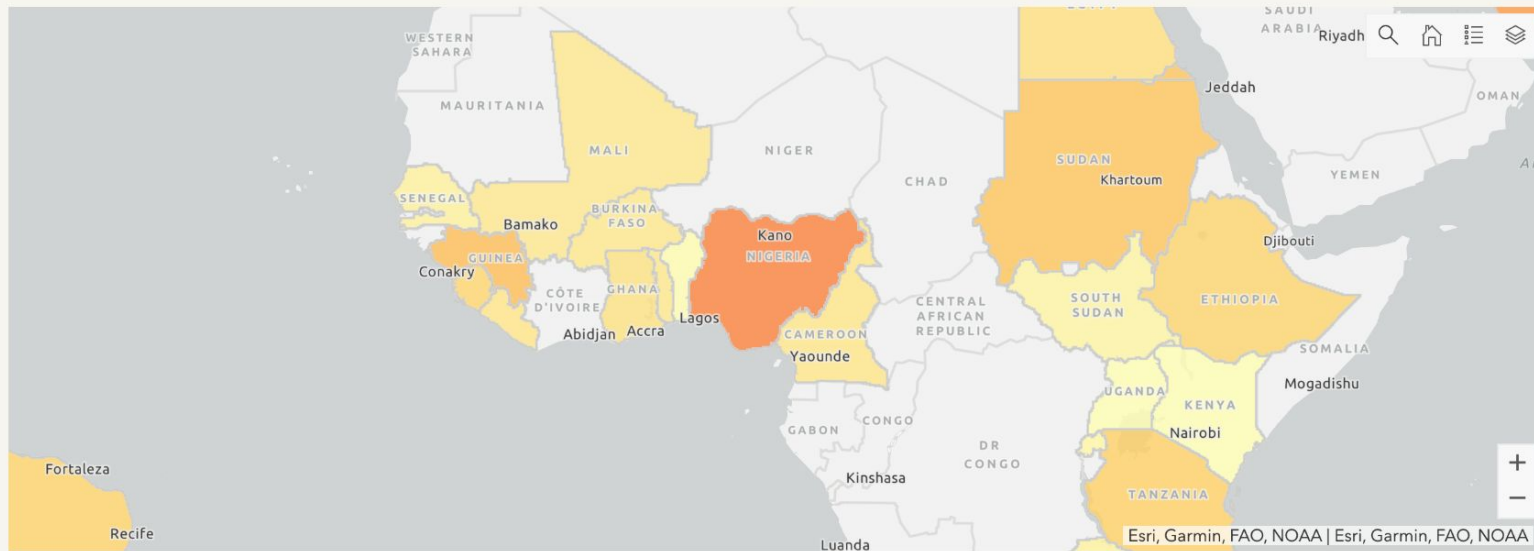
Click on the Arrow to Select a Country / Territory: Admin Lv 1: Admin Lv 2:

HOW TO USE THE DASHBOARD

Select **Census Data** or **Population Estimates** tab and use drop-down menu on upper right to choose a country or sub-national administrative unit.

Click **Legend icon** at the upper right corner of the map to view the map legend. To switch indicators, click **Layer icon**.

Zooming in on the map will gradually turn on sub-national level indicators. Data might take some seconds to load.



Note that indicator values

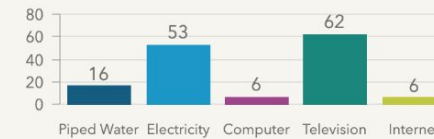
- Older Persons
- Density
- Living Alone
- Access to Amenities
- Migration
- Combined Risks

Nigeria - Census 2010



Persons 65+ Living Alone

Households With Access To or Own (%)



Map Disclaimer: The boundaries and names shown and the designations used on this map do not imply official endorsement or acceptance by the United Nations. Comments and Feedback: In the case of technical difficulties with the dashboard, questions or corrections in data,

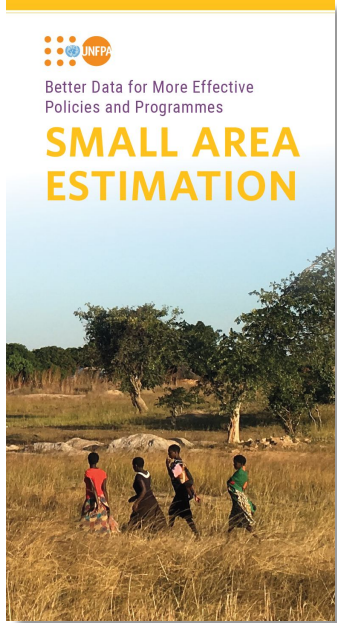
<https://covid19-map.unfpa.org>



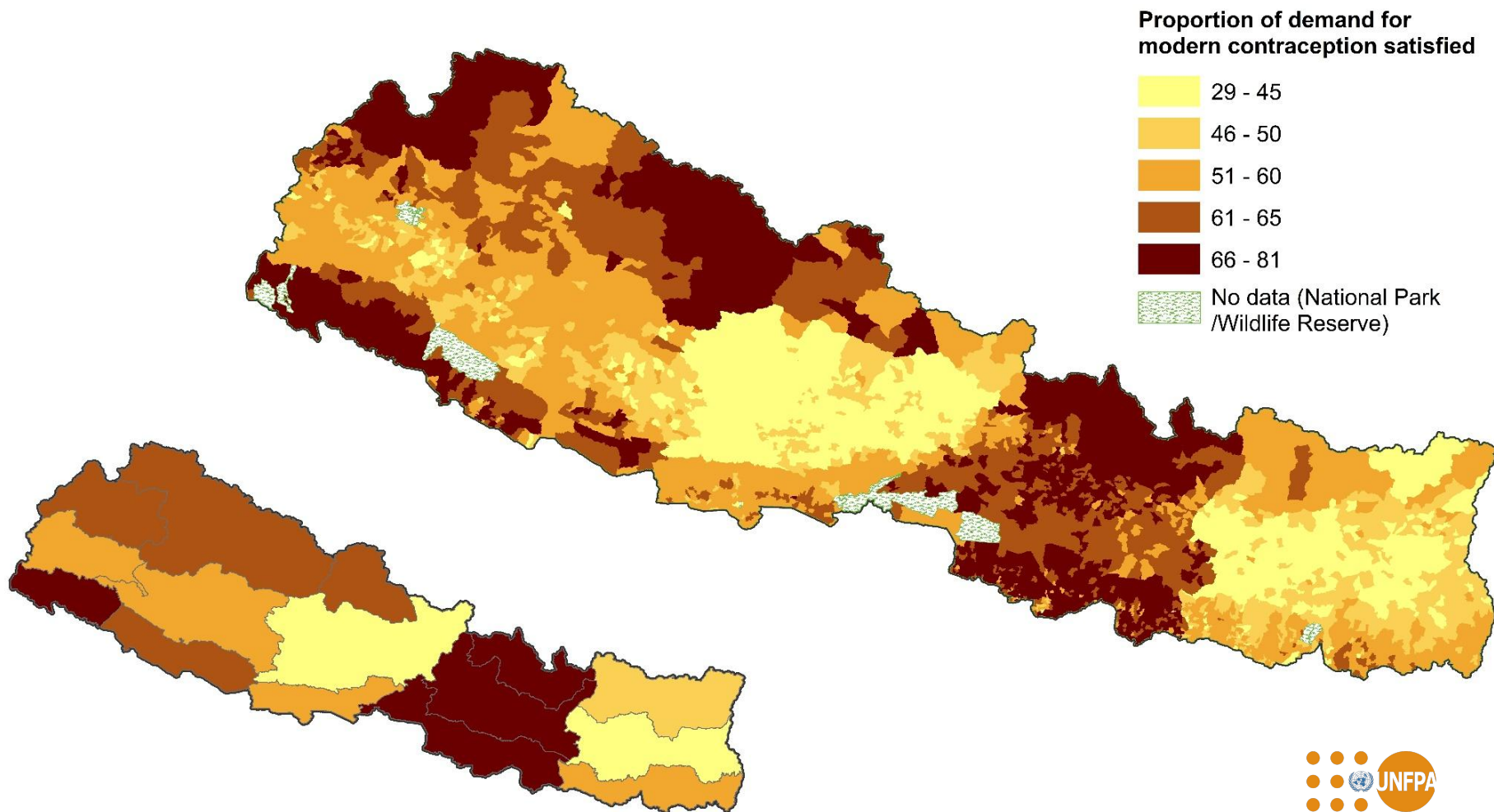


Combining census and survey data to estimate indicators at small area level

Combining census and survey data allows for finer disaggregation of survey indicators, e.g. estimating demand for contraception (**SDG Indicator 3.7.1**) at municipality level in Nepal



- DHS alone allows limited spatial disaggregation of FP.
- Census lacks FP indicators
- Combining both data sources using SAE allows estimates at a small area level





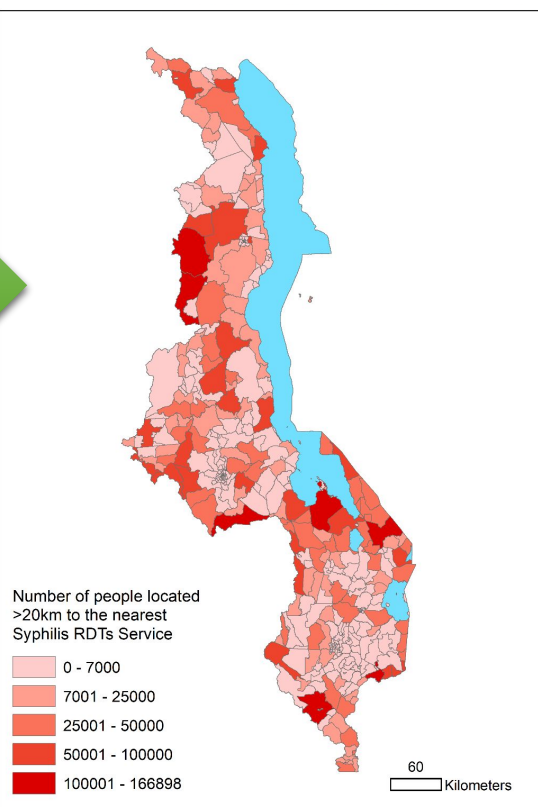
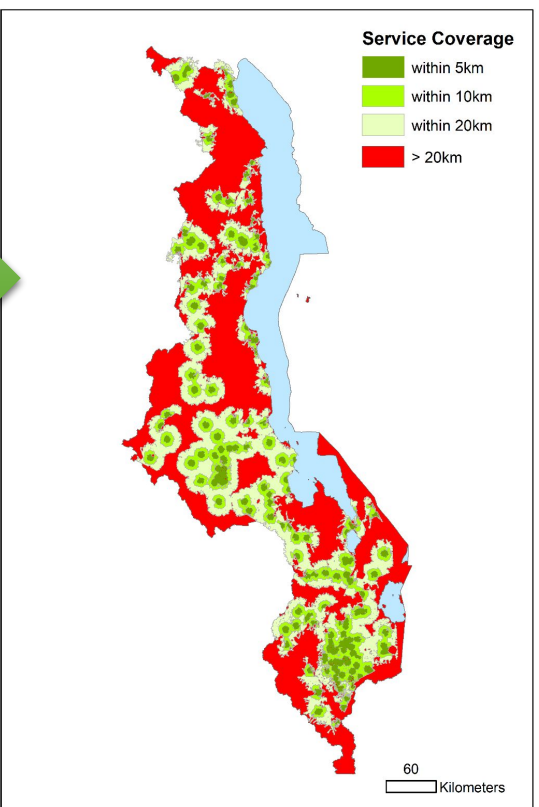
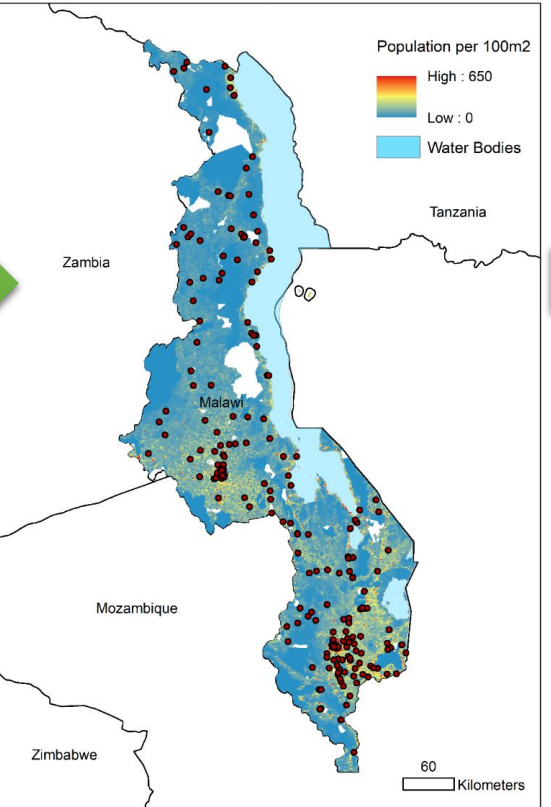
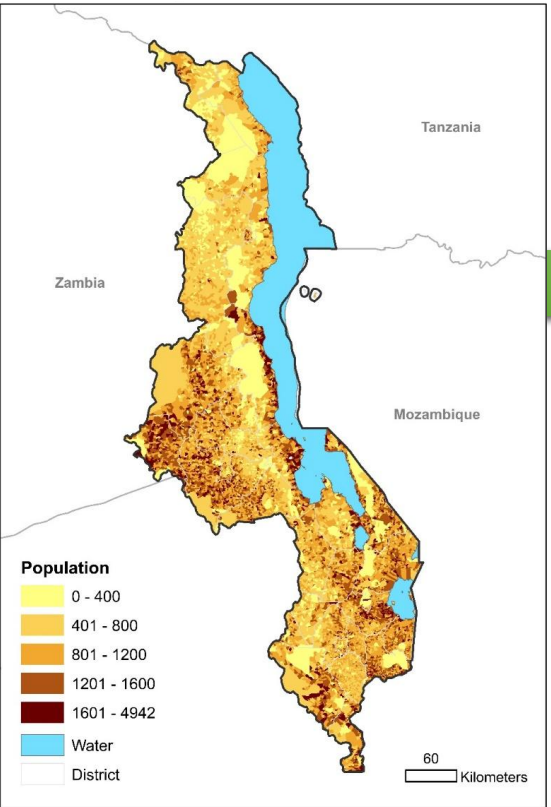
Mapping Access to Essential Services?

Population
Census

SRH Service
Locations

SRH Service Area

Population
Access

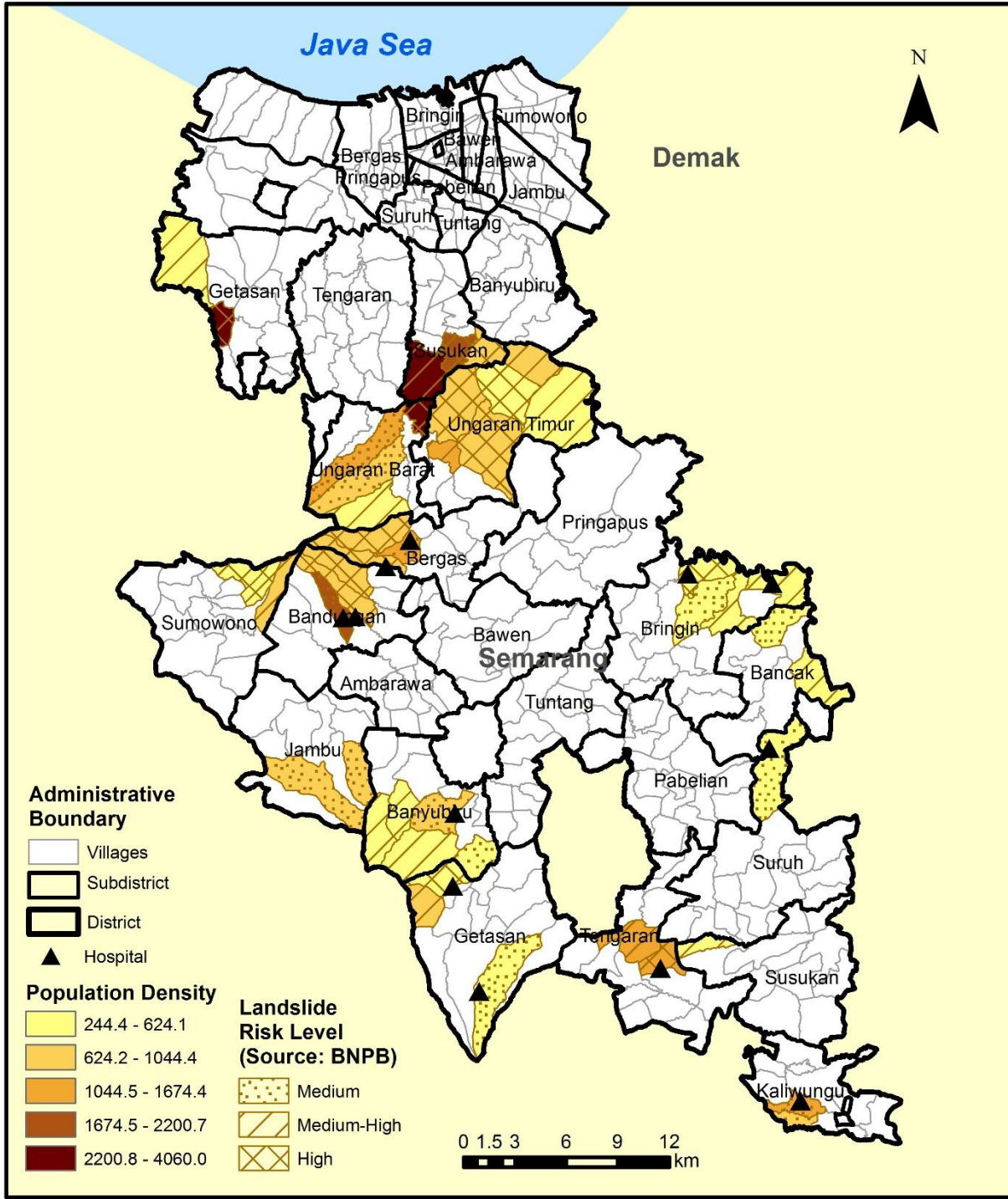
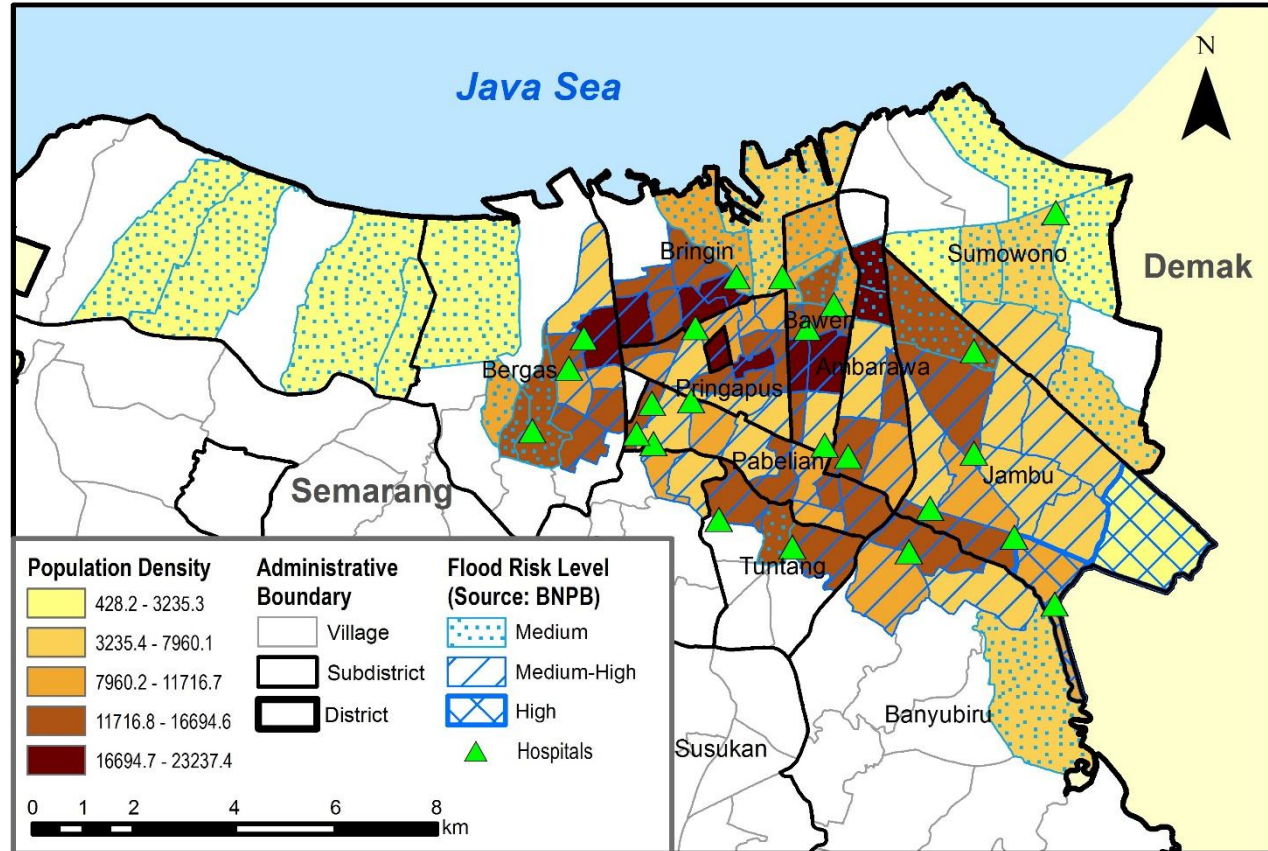


Malawi





Mapping climate change vulnerability: Population density in Mid-High flood and landslide zones in Semarang, Indonesia (Indonesia 2010 Census)



Leveraging census for other population data

- Civil registration coverage and quality- (Centre of Excellence for CRVS systems)
- Common Operational Datasets - Pop Statistics COD-PS - (80 in 2021)- [LINK](#)
- Population projections/ future scenarios
- Population estimates - [LINK](#)



CENTRE OF EXCELLENCE
for CRVS Systems



GRID³

GEO-REFERENCED INFRASTRUCTURE AND
DEMOGRAPHIC DATA FOR DEVELOPMENT

UNFPA Census Capacity Strengthening

- Technical Briefs / Guidance Notes ([LINK](#))
- Upcoming e-Learning courses:
 - Register-based census,
 - GIS for census
 - Small Area Estimation (SAE)
- Global / regional webinars, e.g:
 - [Thematic Analysis](#)
 - [Census Communications & Publicity](#)
- Regional in-person Workshops (when possible)
- Targeted country support: CTA, Consultants, expert missions, technical, operational & administrative support.
- South to South and Triangular Cooperation





**BECAUSE
EVERYONE
COUNTS**

Thank you

