



PRIME MINISTER'S DEPARTMENT
DEPARTMENT OF STATISTICS MALAYSIA

52ND UNITED NATIONS STATISTICAL COMMISSION CENSUS SIDE-EVENT

25 February 2021 (Thursday)
9:00-10:45 AM (New York time)

MAJOR CHANGES IN THE DESIGN OF POPULATION AND HOUSING CENSUSES DUE TO THE COVID-19 PANDEMIC IN MALAYSIA

PRESENTED BY:
MADAM NAZARIA BAHARUDIN
DEPUTY CHIEF STATISTICIAN (SOCIAL AND TECHNICAL DEVELOPMENT PROGRAMME)
AND DEPUTY CENSUS COMMISSIONER
DEPARTMENT OF STATISTICS MALAYSIA



@StatsMalaysia
@MyCensus2020



www.dosm.gov.my



www.mycensus.gov.my

**BANCI
MALAYSIA**



#MyCensus2020

Make Sure You're
COUNTED



**MYSTATS
DAY**

20 OCT



2016 - 2030



CONTENTS



01

BACKGROUND OF DOSM AND MYCENSUS 2020

02

OVERVIEW OF MYCENSUS 2020

03

ADJUSTMENTS IN SCHEDULE

04

MODE AND PARAMETERS

05

CHALLENGES AND OPPORTUNITIES

06

WAY FORWARD





BACKGROUND OF DEPARTMENT OF STATISTICS MALAYSIA (DOSM)



PRIME MINISTER'S DEPARTMENT
DEPARTMENT OF STATISTICS MALAYSIA

LEGISLATION

In 1965, the Bureau of Statistics changed its name to the Department of Statistics Malaysia (under Prime Minister's Department)

On 10 March 2020, the Department of Statistics Malaysia is under the purview of Prime Minister's Department (Economy)

1949



1965

2018

2020

Established in 1949 under the Statistics Act 1949 known as the Bureau of Statistics

Department Of Statistics Malaysia under the Ministry of Economic Affairs

 <p>LAWS OF MALAYSIA</p> <p>Act 415</p> <p>STATISTICS ACT 1965 (REVISED-1989)</p> <p>Under the Statistics Act 1965 (Revised - 1989), the functions of DOSM [Section 2] are:</p> <p>To collect and interpret statistics for the purpose of formulation or implementation of government policies....</p>	 <p>LAWS OF MALAYSIA</p> <p>REPRINT</p> <p>Act 16</p> <p>CENSUS ACT 1960 Incorporating all amendments up to 1 January 2006</p> <p>Under Census Act 1960:</p> <p>The Yang di-Pertuan Agong may, by notification in the Gazette, from time to time direct that a census to be taken throughout Malaysia of the Population, Agriculture, Trade, Labor, Industry, Commerce....</p>
--	--

Statistics Act 1965
(Revised-1989)

Census Act 1960
(Revised-1969)



@StatsMalaysia

@MyCensus2020



www.dosm.gov.my

www.mycensus.gov.my

#MyCensus2020 #MakeSureYou'reCOUNTED

POPULATION AND HOUSING CENSUS OF MALAYSIA



1970

- Conducted in 2 stages: 27 July 1970 (Housing), 25 August 1970 (Population)
- Approach: De Facto
- Mode: Face-to-face interview



1980

- Conducted in 2 stages: 17 May 1980 (Housing), 11 June 1980 (Population)
- Approach: De Facto
- Mode: Face-to-face interview



1991

- Conducted in single stage on 14 August 1991
- Approach: De Facto & De Jure
- Mode: Face-to-face interview



2000

- Conducted on 5 July 2000
- Approach: De Jure
- Mode: Face-to-face interview



2010

- Conducted on 6 July 2010
- Approach: De Jure
- Mode: Face-to-face interview, Drop Off Pick Up (DOPU) & e-Census

SUPPORT FROM PRIME MINISTER OF MALAYSIA



“Looking back, the good lives and benefits that we enjoy today are the results of the cooperation and commitment of the people who provided the information needed during the last five censuses”.

Muhyiddin Yassin
Prime Minister of Malaysia
7 July 2020



OBJECTIVES & MYCENSUS 2020 IN FIGURES



PRIME MINISTER'S DEPARTMENT
DEPARTMENT OF STATISTICS MALAYSIA

OBJECTIVES

2020



As an input for **new benchmark** in the development of socio-economic indicators

01

Collecting stocks & profiles of the country's population and housing



32.7

 million Populations

9.0

 million Living Quarters

8.2

 million Households

04

OBJEKTIF BANCII

02

Input for national development planning including the distribution of per capita grants



160

 Administrative District

4.0

 persons Avg. Households Size

As a basis for the **Estimation and Projection** of the Population and Living Quarters

03

1,107

 Census District

99,356

 Enumeration Block



MAIN OUTCOME OF MYCENSUS 2020



PRIME MINISTER'S DEPARTMENT
DEPARTMENT OF STATISTICS MALAYSIA

NATIONAL AGENDA

INPUT FOR EVIDENCE-BASED DECISION-MAKING

- **Population Policy**
National Older Persons Policy
- **Housing Policy**
National Housing Policy
- **Education Policy**
National Education Policy
- **Security Policy**
National Social Policy
- **Health Policy**
National Adolescent Health Policy
- **Financial Policy**
- **Fiscal Policy**
- **Budget Policy**

INPUT

- **Determination of Per Capita Grant**
- **Fundamentals for the Constitutional Democracy Process**
- **Balance & Sustainability of Urban and Rural Development**

BENCHMARK

Measurement of Sustainable Development Goals (SDGs)

- 11 from 17 goals
- 110 from 169 targets

Latest Benchmark & Achievement Assessment

- National Level
- International Level

Key Statistical Benchmark

- Poverty rate
- Enrolment rate
- Labour force participation rate
- Unemployment rate
- GDP per capita rate
- Demographic indicators

NATIONAL STATISTICAL SYSTEM

Malaysia Statistical Address Register
Scientific and efficient household sampling method

Malaysia Statistical Population Register
Census of population through updating of population information from time to time

Strengthening Information Technology Infrastructure and Computing
Investment on Infrastructure and system modernization to enhance the production of national statistics

As a **database for implementation of the Agricultural Census**



@StatsMalaysia

@MyCensus2020

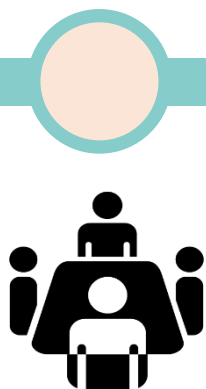


www.dosm.gov.my

www.mycensus.gov.my

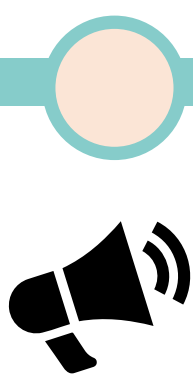
#MyCensus2020 #MakeSureYou'reCOUNTED

12 July 2017	4 June 2020	5 October 2020	11 January 2021
Census Day 7 July 2020	Adjustment of MyCensus 2020 in two phases:	Rescheduling of the MyCensus 2020:	Rescheduling of the MyCensus 2020:
e-Census 20 June - 9 July 2020	First Phase (e-Census) 7 July – 30 Sept. 2020	First Phase (e-Census) 7 July – 21 Dec. 2020	First Phase (e-Census) 7 July 2020 – May 2021
Face-to-face 7 – 24 July 2020	Second Phase (Face-to-face) 7 – 24 October 2020	Second Phase (Face-to-face) 20 Jan. – 6 Feb. 2021	Second Phase (Face-to-face) <i>Subject to an approval from the Government of Malaysia</i>



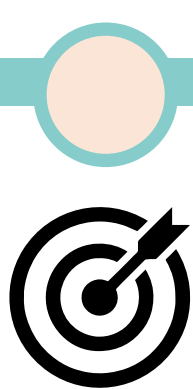
01

COVID-19 Pandemic
Movement Control Order (MCO) effective on **18 March - 12 May 2020**



02

Upsurge of COVID-19 cases
Conditional MCO was implemented in selected states from 27 October until 6 December 2020



03

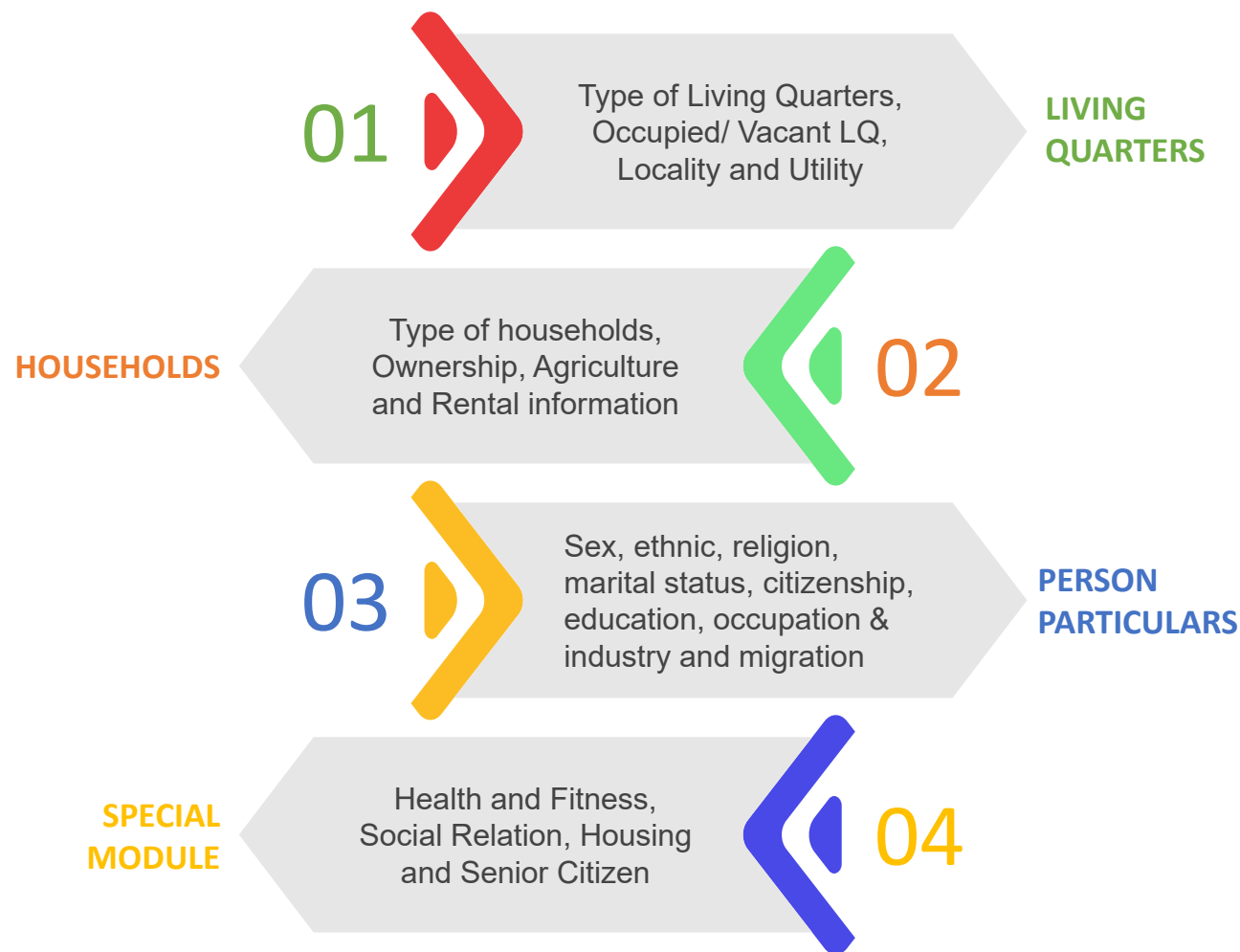
COVID-19 Pandemic
Movement Control Order (MCO) 2.0 effective on **11 Jan. – 18 Feb 2021**

MODE OF CENSUS AND MAIN PARAMETERS

MODE OF CENSUS



MAIN PARAMETERS FROM CENSUS QUESTIONS





Why Malaysia Proceeds with MyCensus 2020?



1

Field Operation

Trial Census & Pilot Test

- Completed

Frame

- Updating listing of Living Quarters and mapping completed.

- Streamline the **strategy for field operation** due to COVID-19 pandemic.

2

Census Questionnaire

- Census questionnaire has been approved and used during trial census.

3

System for MyCensus 2020

- Malaysia Integrated Population Census System (MyIPCS) is a centralised & comprehensive census system that provide a uniform and integrated framework has been developed and in operation.

4

Logistics

- Storage arrangement has been finalised and census questionnaire & census materials have been distributed.

5

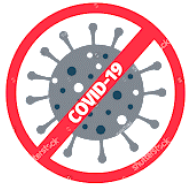
Engagement & Collaboration

- Engagement and Collaboration with Stakeholders at State already established.

6

Support from Government

- Continuous support from the Government at Federal and State levels.
- Continuous engagement on census updates.



COVID-19 pandemic



Re-adjustment of Census schedule



Adjustment in Enumeration Mode

Optimising the usage of e-Census and telephone interview (CATI) as the main mode of response



Community reluctance & fear

Non-cooperation of the public due to fear of COVID-19



Challenges in recruitment of census enumerators

Possible COVID-19 infection among census enumerators



Assuring the safety of the staff and public as top priority

Additional procurement (face mask and hand sanitiser)



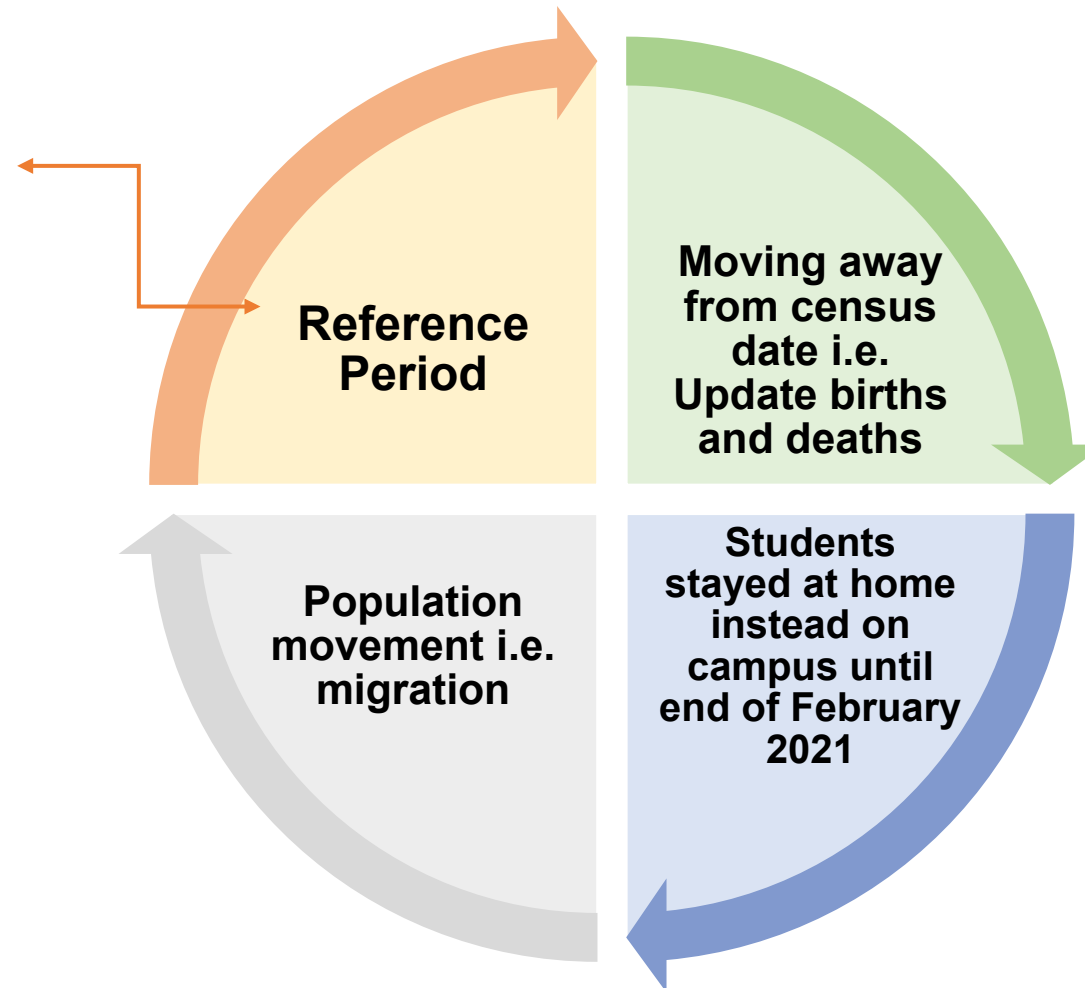
Engagement with media through TV/ Radio/ Social Media platform

Educate and provide information to the masses.

Challenges in Data Quality

Questions with reference period.

- Employment status in the previous week (Q: E26a)
- Social relations. Eating together in the last seven days [Q: G3]
- Access to Health facilities in the previous months (Q: F3)
- Spending on medical expenses in the previous month (Q: F4)





MITIGATING MEASURES AMIDST COVID-19 PANDEMIC



PRIME MINISTER'S DEPARTMENT
DEPARTMENT OF STATISTICS MALAYSIA

- **Coordination among various agencies** at the national and state levels:
 - ✓ Federal Government
 - ✓ State Government
 - ✓ Local Authorities
 - ✓ Government Link Corporations
 - ✓ Private corporations
- Realignment of **census budget** for COVID-19 emergency procurement such as face masks and hand sanitiser
- Extend and adjust the **recruitment process** and timeline in most affected areas
- **Leveraging technology** for training and Post Enumeration Survey (PES) by using online, system (MySUL) and telephone
- Work closely with **National Security Council and Ministry of Health** in relating to updates and necessary actions to be taken
- Produce special **Standard Operating Procedure** on conducting field operations





Leveraging Administrative Data and Analytics Technology

- Staggered workflow with multiple phases and hybrid approach in census operations
- e-Census and CATI reduced the impact of scaled down field operations
- Use of Administrative data
 - ✓ Basic data on population compiled from administrative records
 - ✓ Data Quality control: Consistency checks with available information
- Use of Analytics Technology
 - ✓ Google Maps: Data tapping to complement existing data collection
 - ✓ Train model for machine learning
- Multi-platform publicity on MyCensus 2020 with digital platforms and conventional methods
- Enhancing co-operation with public and private agencies in ensuring the success of MyCensus 2020



WAY FORWARD: MSAR AND MSPR



Malaysia Statistical Address Register (MSAR)

BUILDING UNIT ADDRESS

Information on the address of the Building Unit including Business Organisations, Residences, Buildings / Public Facilities and landmarks



Malaysia Statistical Population Register (MSPR)

INDIVIDUAL INFORMATION

Gather information on the Malaysian population covering demographic, educational, economic, social and individual characteristics

Importance of MSPR

- Next census can be carried out on a small scale
- To update MSPR information frequently using administrative data
- Information in MSPR can be used for:
 - ✓ Distribution of Aid
 - ✓ Local population information for the development of public facilities



WAY FORWARD



1. Assess risks and opportunities and put in place corresponding actions or mitigating measures.
2. Establish protocols when COVID-19 affects a community or any of the census enumerators.

THANK YOU

BANCI MALAYSIA

POPULATION & HOUSING
**CENSUS
MALAYSIA 2020**

YOUR DATA IS OUR FUTURE



#MyCensus2020
7.7.2020

Make Sure You're
COUNTED

For More Info : www.dosm.gov.my
www.mycensus.gov.my

