



BECAUSE  
EVERYONE  
COUNTS

# UNFPA support to the 2020 Census Round Under COVID-19

Tapiwa Jhamba  
Technical Adviser, Population and Development Branch  
25 February 2021

# The 2020 Census Round- Emerging capacity needs

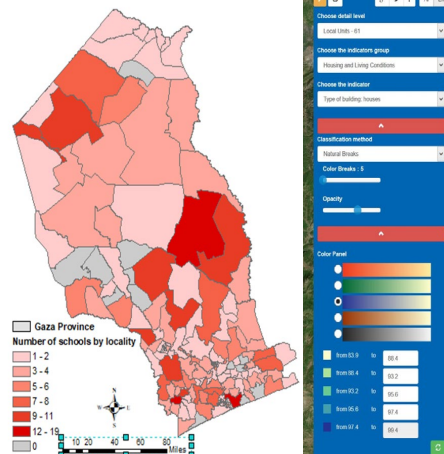
New technologies, innovation, expertise

Increased use of handheld devices

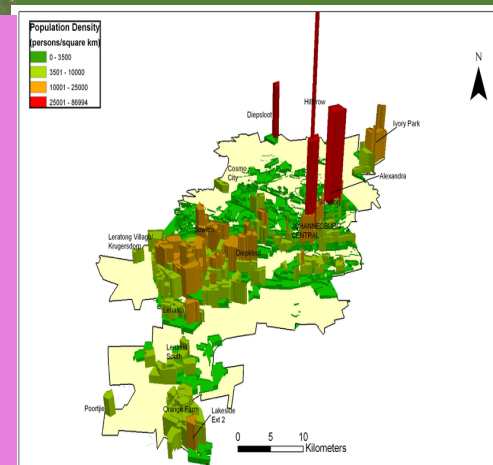


Digital cartography & use of satellite imagery

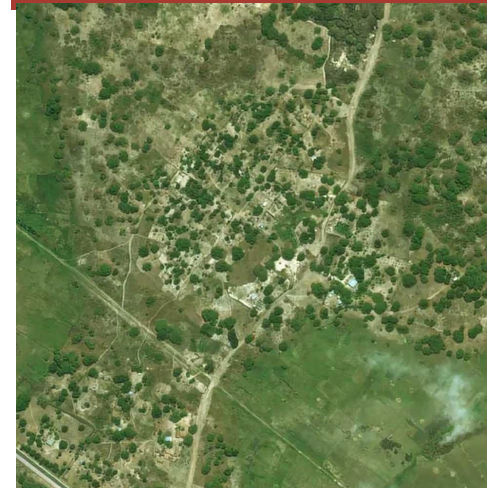
Capacity to use GIS in census, analysis & dissemination



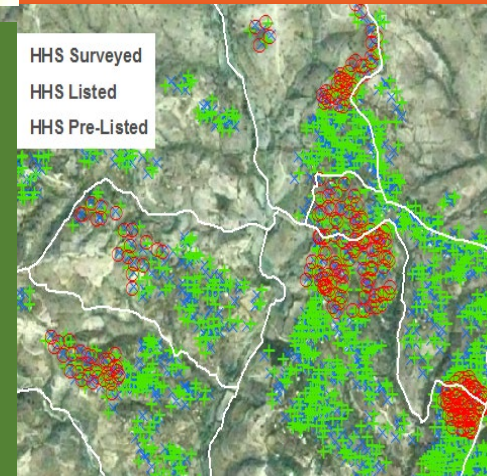
Wider use of census data



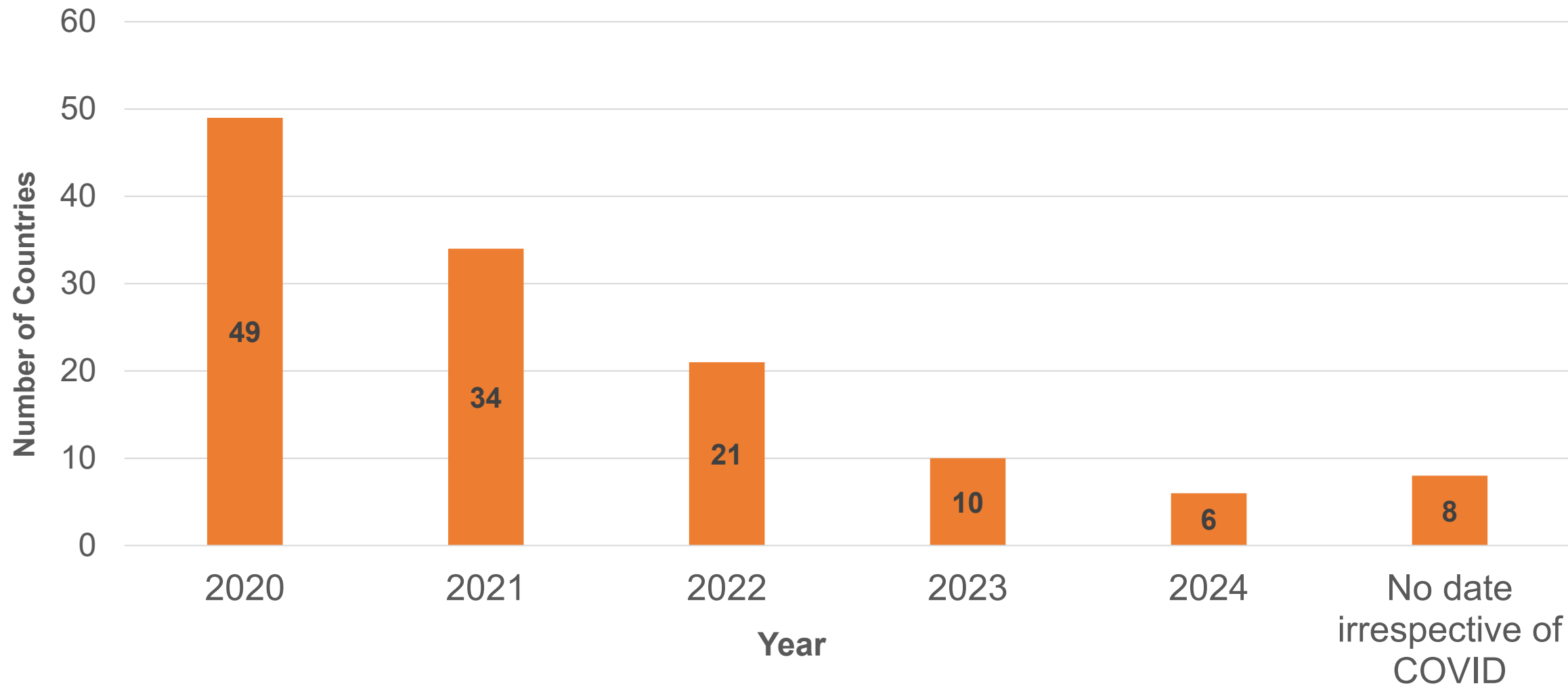
High-resolution modelled population estimates, where enumeration is not possible



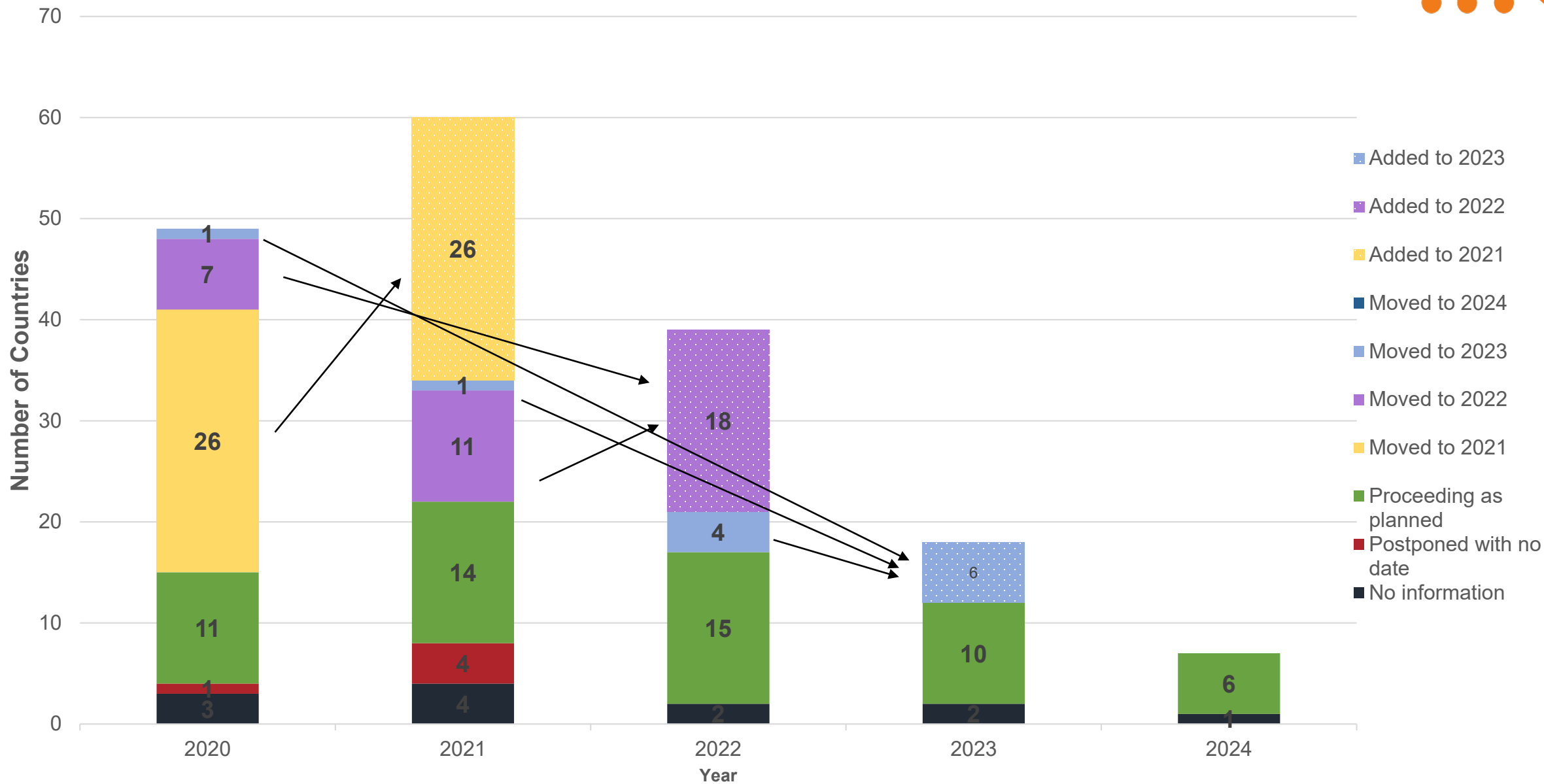
Using GIS to improve census quality



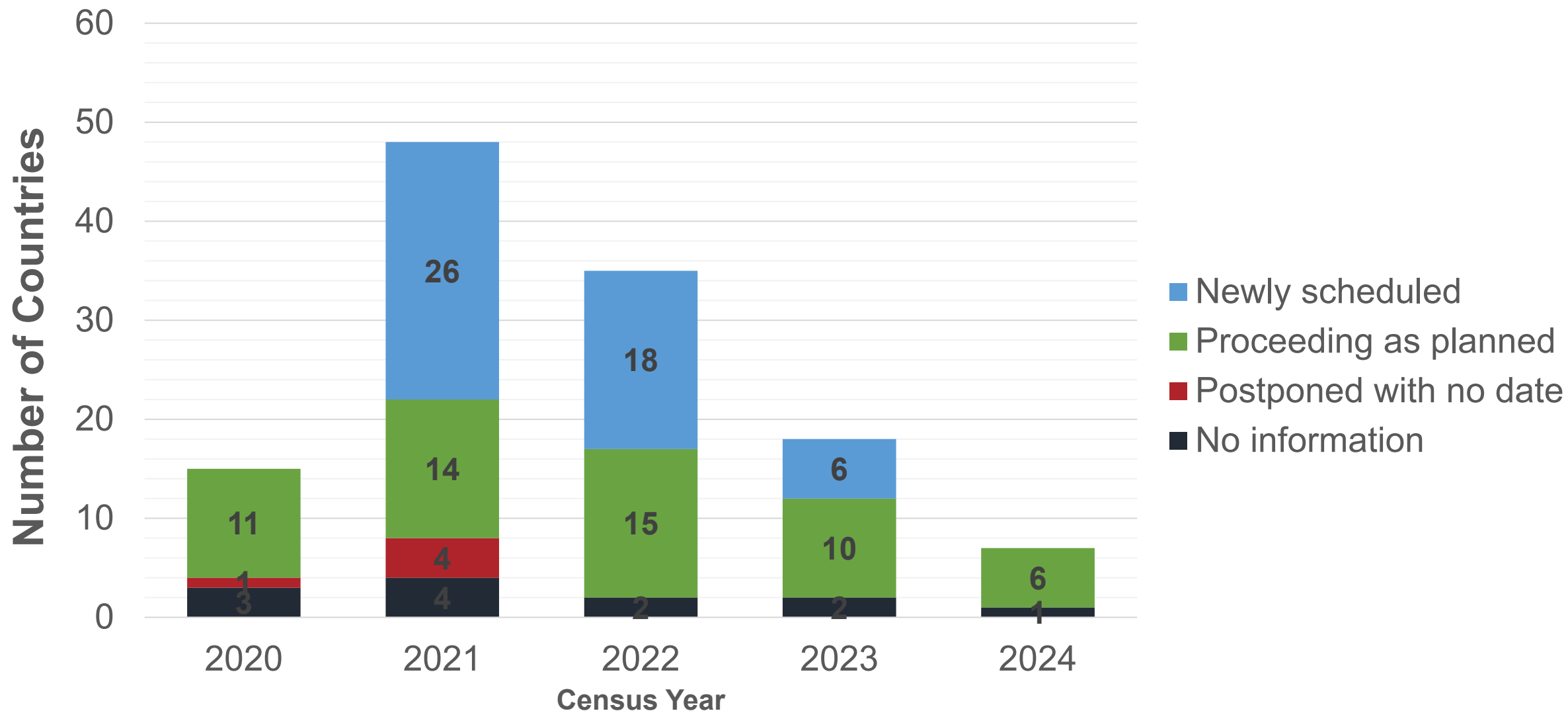
## 2020 Census Round Schedule Pre-COVID-19



### Impact of COVID-19 on Census Schedule



## New Census Schedule (UNFPA programme countries)



+  
•

# UNFPA support- under COVID-19

- Capacity strengthening
  - Virtual learning
  - Remote technical assistance
- New tools
- Procurement
- Technical briefs and guides

# Capacity strengthening




**TRANSITION TO eLEARNING**  
– Census eLearning modules



**REMOTE TECHNICAL  
ASSISTANCE**

A large circle with a blue-to-orange gradient is positioned on the left side of the slide. It contains the main title text. There are also some small orange decorative elements: a plus sign and a circle near the top left, and a dot near the bottom right of the circle.

# New tools and innovative approaches

- **Pre-enumeration area delineation tool**
  - **Census cartography assessment tool**
  - **COVID-19 population vulnerability dashboard**
- 
- A thin vertical blue line is located on the right side of the slide, extending from the middle of the text area down to the bottom.

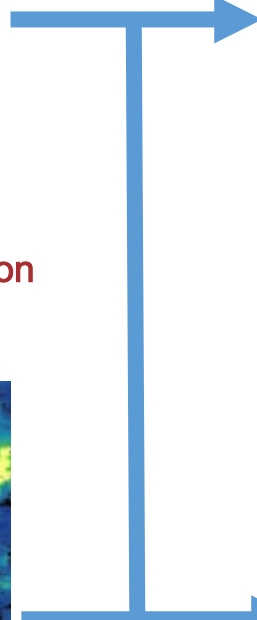
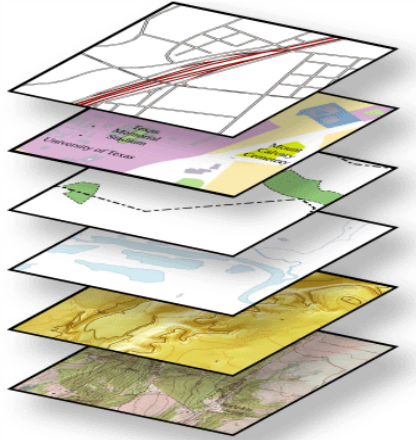


# Input data

# Splitting process

# Merging process

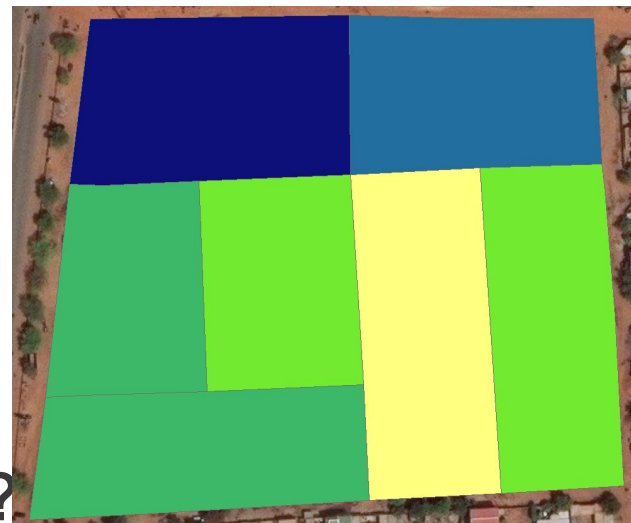
Georeferenced layers  
(e.g. road, river, railways, etc)



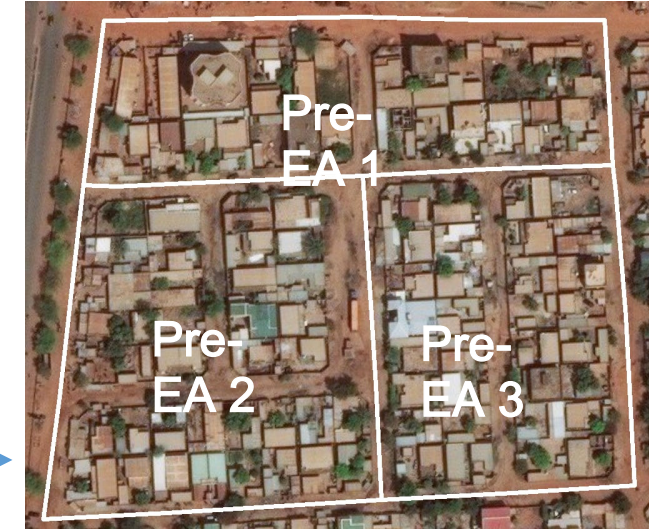
Building blocks



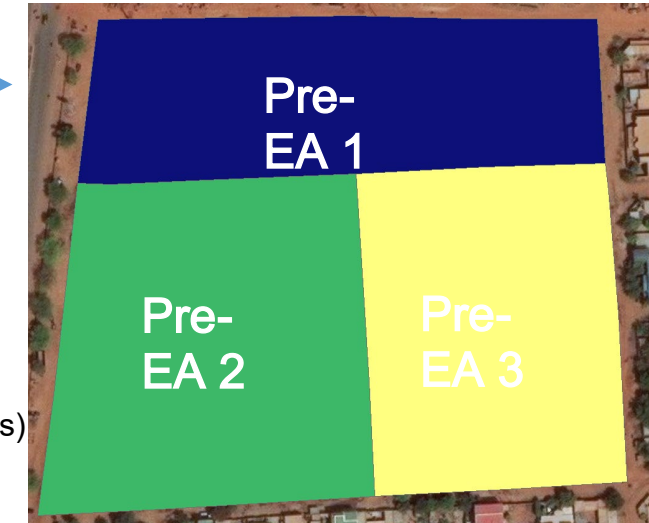
Building blocks with total population



Pre-Enumeration Area (EA) outline



Pre-EAs with total population



### Hard Constraints:

- Population (Max)
- Area (Max )
- Uncrossable Border
- Min Boundary Length
- Regional constraint

### Soft Constraints:

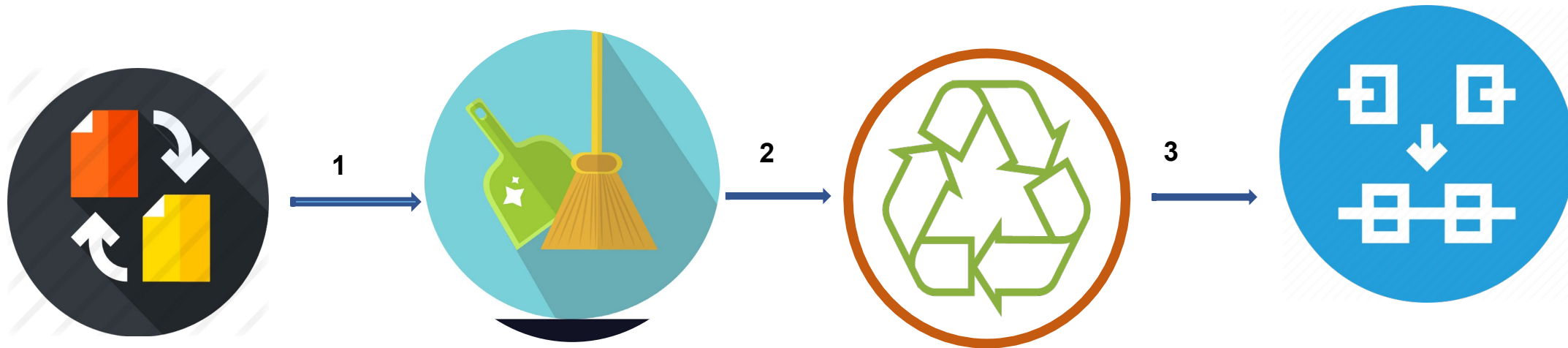
- Target (Pop & Area)
- Homogeneity (Socio-economic)
- Shape (Compactness)

Source: WorldPop

How the pre-EA tool works?

# Census Cartography Assessment Tool (CCAT)

A GIS-Based Automated EA validation tool

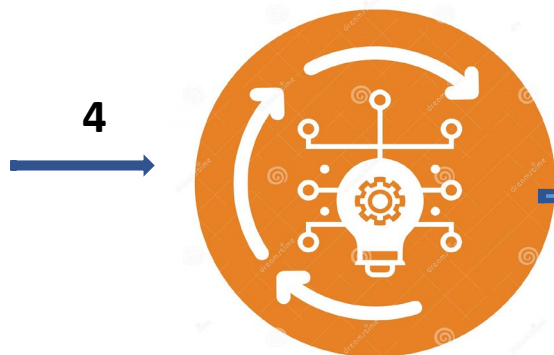


**Cartography data input** (hh mapping, boundary layers, infrastructure & feature points)

**Spatial data classification & verification** (Region, District, EA, rural/urban, GPS coding)

**Threshold setting** (EA size- urban & rural/ mixed)

**Spatial data analysis** (Data linkages, segregating data points,



**EA summary statistics** (Rural and Urban)

**Urban EAs with:**

- HH less than threshold
- HH More than threshold

**Rural EAs with:**

- HH less than threshold
- HH more than threshold

**Outlier hh:**

- located outside EA boundary
- with no GPS

# COVID-19 Population Vulnerability Dashboard



## COVID-19 Population Vulnerability Dashboard



Census Data | Population Estimates | Health Sector Readiness | COVID-19 Real-time Updates

### Census Data

Click on the Arrow to Select a Country / Territory: Nigeria | Admin Lv 1: None | Admin Lv 2: No Data

#### HOW TO USE THE DASHBOARD

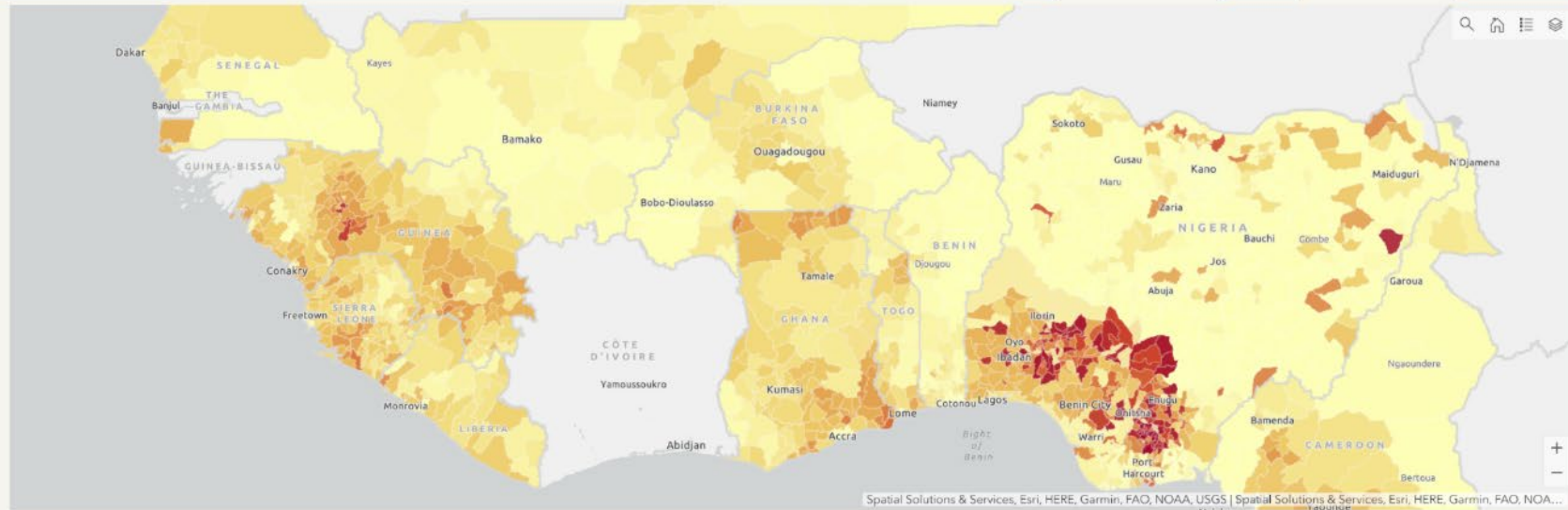
Select **Census Data** or **Population Estimates** tab and use drop-down menu on upper right to choose a country or sub-national administrative unit.

Click **Legend icon** at the upper right corner of the map to view the map legend. To switch indicators, click **Layer icon**.

**Zooming in** on the map will gradually turn on sub-national level indicators. Data might take some seconds to load.

Note that indicator values on **bottom panel** are always shown for the country- or sub-national admin unit selected on the upper right.

Each dashboard panel can be expanded using the small icon on upper right corner of that panel.



Older Persons | Density | Living Alone | Access to Amenities | Migration | Combined Risks

### Nigeria - Census 2010



Persons Per Household

4.4

Persons Per Room

1.6



Persons 65+

7.1M

Persons 80+

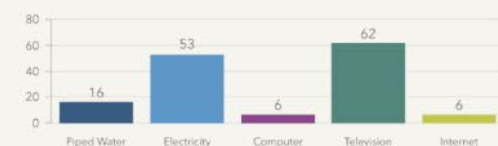
2M



Persons 65+ Living Alone



Households With Access To or Own (%)



# Procurement of PPE for census

---

- **Updated UNFPA Guidance on Procurement and Use of Supplies in response to COVID-19-** to include Census as a programme and supply priority under COVID-19 Fast Track Procedures



## Guidance Note: UNFPA Technical and Operational Support to the 2020 Census Round

December 2020

What is a Population and Housing Census?	5
Utilization of Census Data	6
Impact of COVID-19 on Census - UNFPA Key Messages	11
Key Phases of the Census and Potential Roles of UNFPA	13
Matrix: Key phases of the census and potential roles of UNFPA	14

## Technical Brief on the Implications of COVID-19 on Census

Update No. 1, March 25, 2020

# COVID-19 related technical briefs and guides



Technical Guidance Note



United Nations  
Statistics Division

**Date:** September 2020

**Keywords:** Population and Housing Census, Personal Protective Equipment (PPE)

Guidance Note on  
Personal Protection Equipment (PPE) Recommendations for Census

# UNFPA

Delivering a world where  
every pregnancy is wanted  
every childbirth is safe and  
every young person's  
potential is fulfilled



United Nations Population Fund  
[www.unfpa.org](http://www.unfpa.org)

