



2018 MALAWI POPULATION AND HOUSING CENSUS

BE COUNTED.LEAVE NO ONE BEHIND

BY

MRS. MERCY KANYUKA

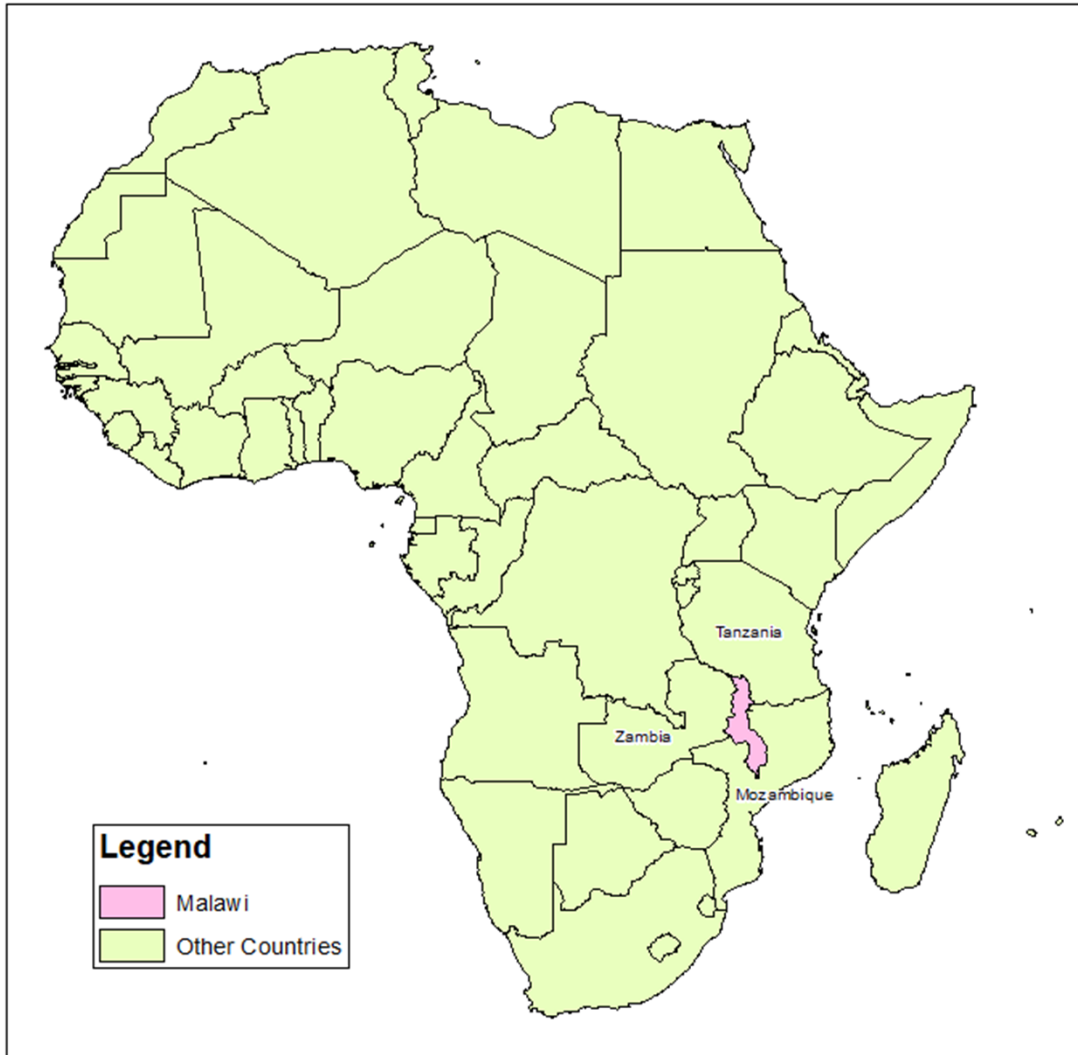
COMMISSIONER OF STATISTICS, MALAWI NATIONAL STATISTICAL OFFICE

6TH MARCH 2019

PRESENTATION OUTLINE

- Malawi: Country statistics
- Brief background
- Preparations
- Implementation
- Field operations
- Lessons Learnt
- Challenges
- Way forward

MALAWI: COUNTRY STATISTICS

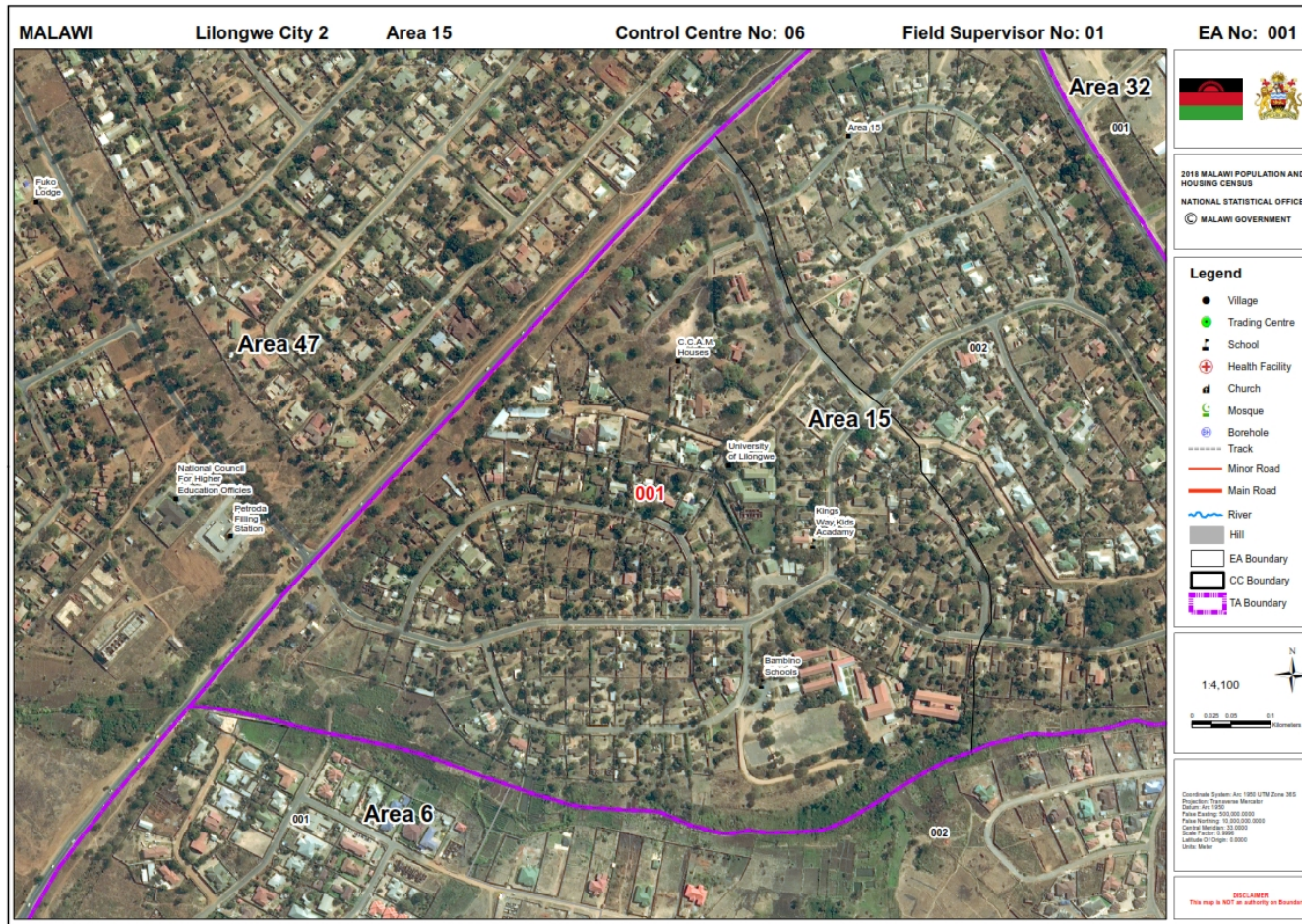


- Malawi, a landlocked country in south eastern Africa
- Capital City : Lilongwe
- Total Land Area: 94,552 Square Kilometers
- Population: 17,563,749 (2018 PHC)

BRIEF BACKGROUND

- Malawi conducted 2018 PHC from 3-23 Sept under the Theme: *Be counted. Leave No One Behind*
- Produced Enumeration maps using a 50cm resolution satellite imagery
- High resolution maps allowed clear images right down to the smallest village level and we delineated 42 census districts and 18,772 enumeration areas

Satellite Images Field Maps



PREPARATIONS

- Malawi made a decision to move from Pen and Paper Interviews (PAPI) Methodology; and adopted Computer Assisted Personal Interview (CAPI)
- Malawi used 20,000 tablets (15,000 UNFPA/DFID) and 5,000 MG
 - (15,000 UNFPA/DFID Tablets to be shipped to Zambia in April 2019)
- Solar Power banks to ensure constant power supply for tablets in the field
- State-of-art and high capacity server mounted at NSO Head Office



DFID AND UNFPA HANDING-OVER 15 000 TABLETS TO MALAWI GOVERNMENT



PREPARATIONS' CONT'

- CAPI tool and whole census methodology were pretested and piloted in 10 districts in 2015 and 2017 and all went perfectly well

- Recruited 23 000 census field staff (34% female, 66% male):
 - District supervisors
 - Control centre supervisors
 - Field supervisors
 - Enumerators
 - 90% of field staff were young aged below 25 years

Enumerators were Youthful and Energetic



Training

- Training was conducted at 3 levels:
 - District Supervisors trained at one location for the whole country for 12 days
 - Control Centre Supervisors trained at 4 regional centres for 12 days
 - Enumerators and Field Supervisors trained at 58 training centre spread across the country for 6 days

- Training sessions were on tablet usage, software functionality and logistics

- Trained 133 journalists (38% female, 62% male) on census aspects and census reporting

- Developed 2018 PHC logo which was used on all materials as part of census branding and marking

2018 Malawi Census Logo



IMPLEMENTATION

- Officially launched 2018 PHC publicity and countdown campaign on 6 June 2018



PUPILS AND TRADITIONAL LEADERS PARTICIPATED



Malawi Leader in a Televised Address on 2018 PHC



IMPLEMENTATION

- Malawi's 2018 PHC was conducted from 3-23 September 2018
- The CAPI enabled collection of geocodes at household level
- Enumerators were transferring data to supervisors via Bluetooth
- Supervisors were transferring data to the central server using mobile internet through VPN (dedicated to the census)
- The preliminary results were ready for release mid Dec 2018
- Population is 17.6 million from 13.1 million in 2008 (growth rate of 2.9% per annum)
- We aim to release the final results in April 2019 - 6 months after the enumeration
- We plan to produce thematic reports, district monographs and lower level constituency reports by December 2019

PARTNERSHIPS

- Malawi Government contributed 55% of US\$19.8 million census budget
- DFID, USAID, UN Family, Norway, GIZ, Iceland, Republic of Ireland and Standard Bank supported the balance of the census budget – Coordinated by UNFPA
- US Census Bureau provided technical assistance in:
 - Development of CAPI data collection and quality control system
 - Installing CSPro questionnaire and program with all soft and hard checks for data quality control
 - Continues to support data editing, tabulation and analysis

LESSONS LEARNT

- Use of digital census proved to be real-time and cost-effective
 - CAPI effectively cut out labour intensive process of data entry leading to cost and time savings
 - Timetable for publication of preliminary results was halved
 - Time for releasing final census report has been reduced by about 6 months
 - Data transfer to NSO Central Office was instant

THANK YOU