

# 2020 Census

## Evolution, Potentialities and Integration with the geoinformacion

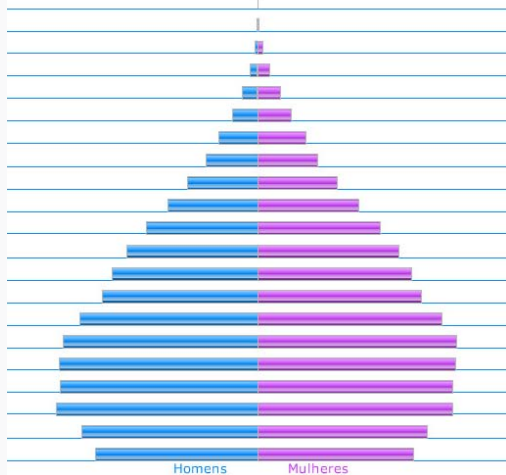
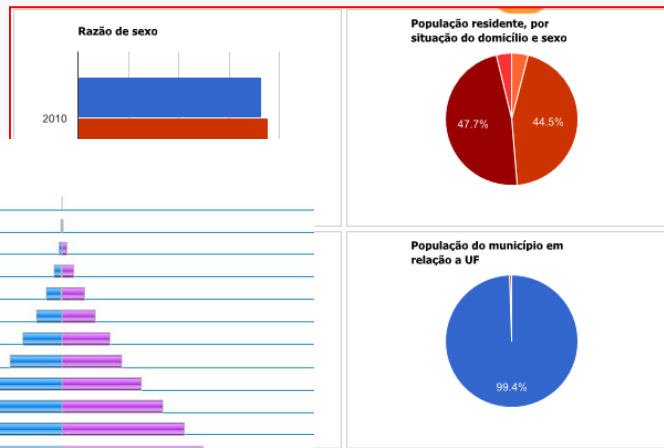
João Bosco de Azevedo

Directorate of Geosciences

# IBGE

“To portray Brazil by providing the information required to the understanding of its reality and the exercise of citizenship”

	URBANA (absoluto)	RURAL (absoluto)	URBANA (percentual)	RURAL (percentual)
Brasil	160.879.708	29.852.986	84,35	15,65
Região Norte	11.663.184	4.202.494	73,51	26,49
Região Nordeste	38.816.895	14.261.242	73,13	26,87
Região Sudeste	74.661.877	5.691.847	92,92	7,08
Região Sul	23.257.880	4.126.935	84,93	15,07
Região Centro-Oeste	12.479.872	1.570.468	88,82	11,18

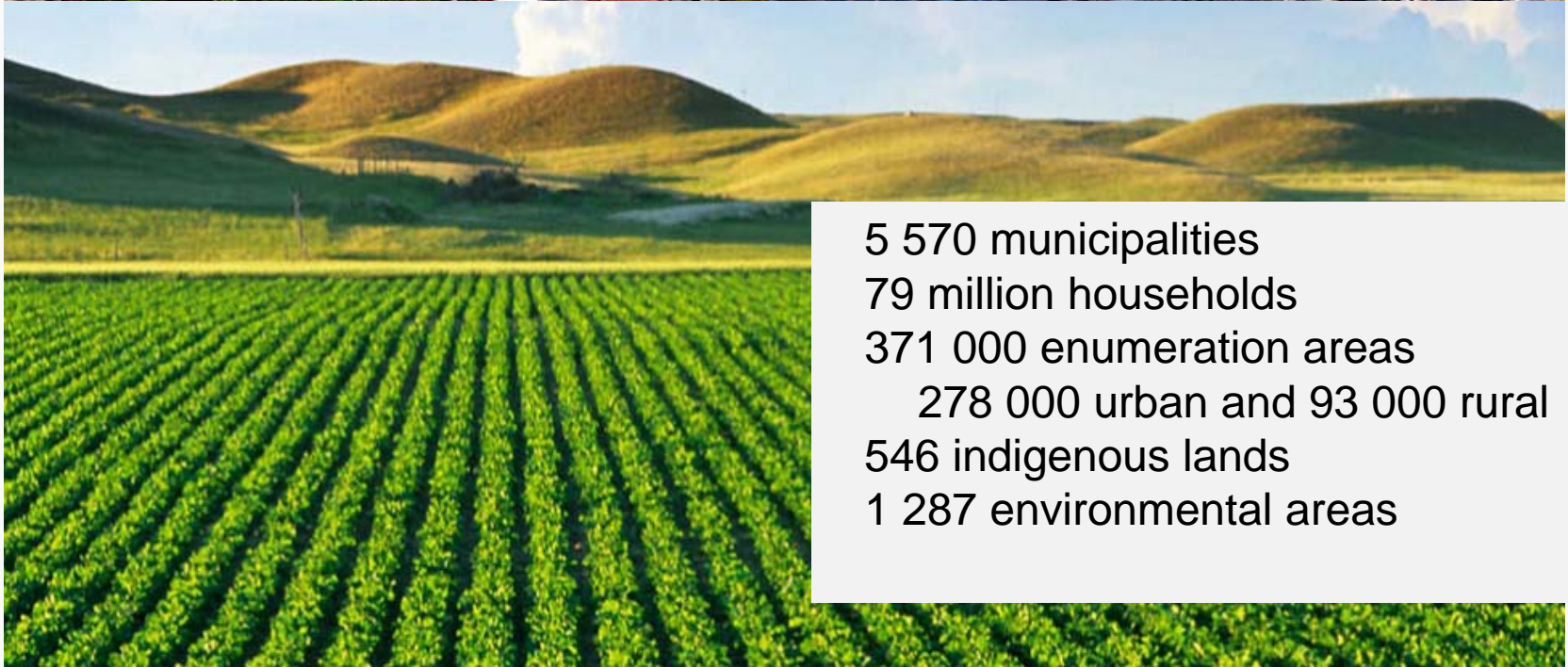


# 2020 Censo





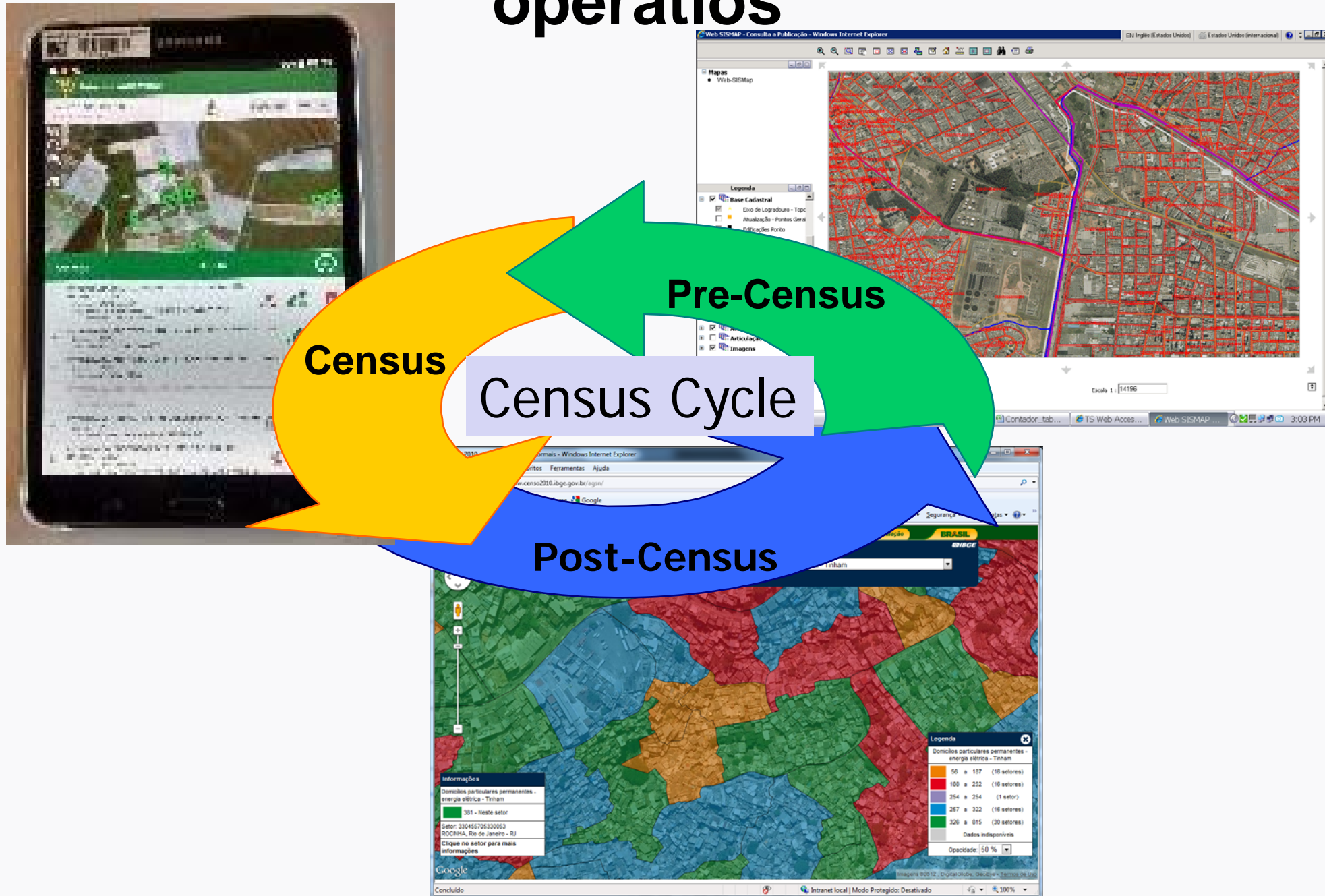
# Dimensions of the 2010 census



5 570 municipalities  
79 million households  
371 000 enumeration areas  
    278 000 urban and 93 000 rural  
546 indigenous lands  
1 287 environmental areas

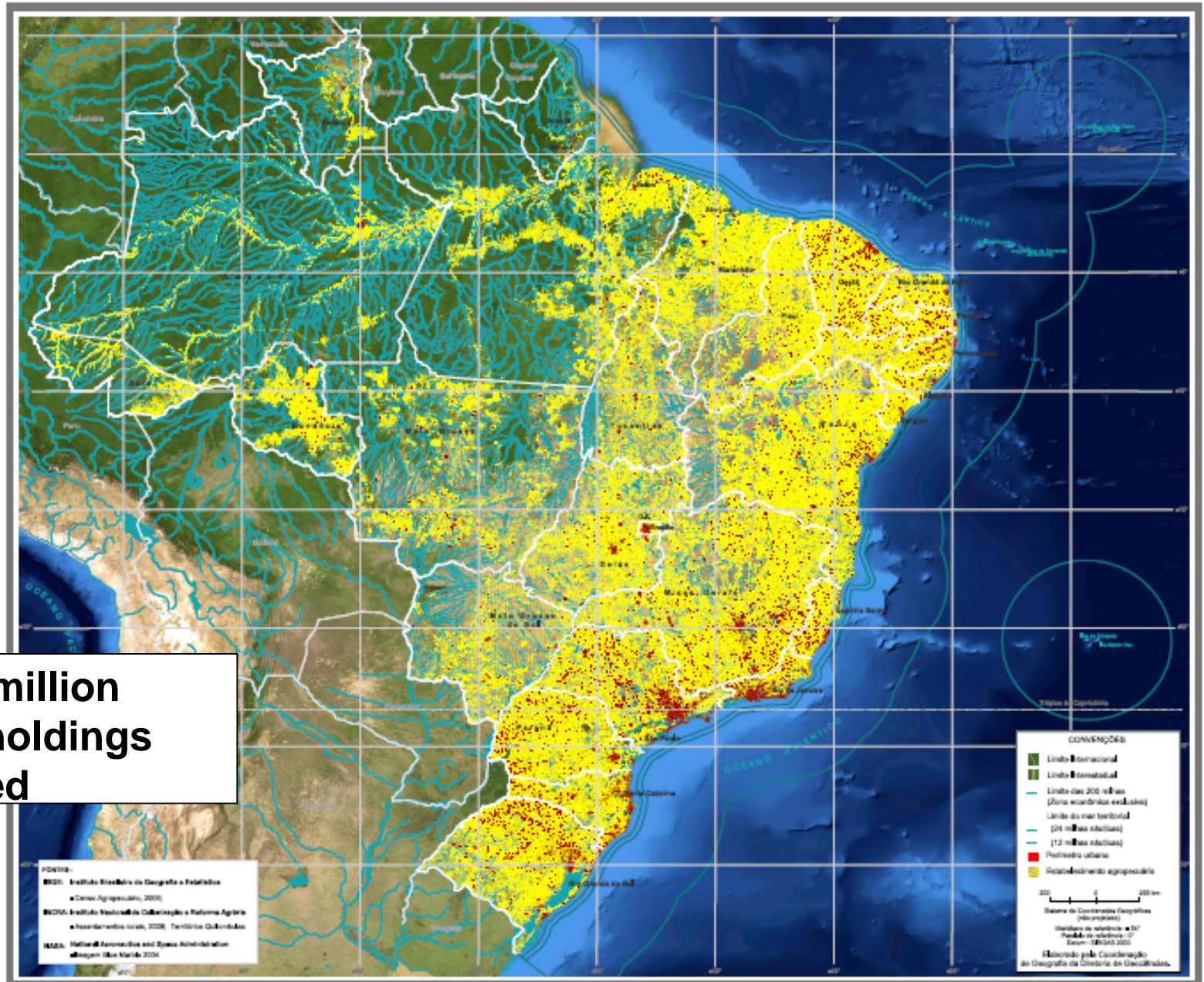


# Geoinformation contribution to Census operations





# Georeferenced Statistical Data

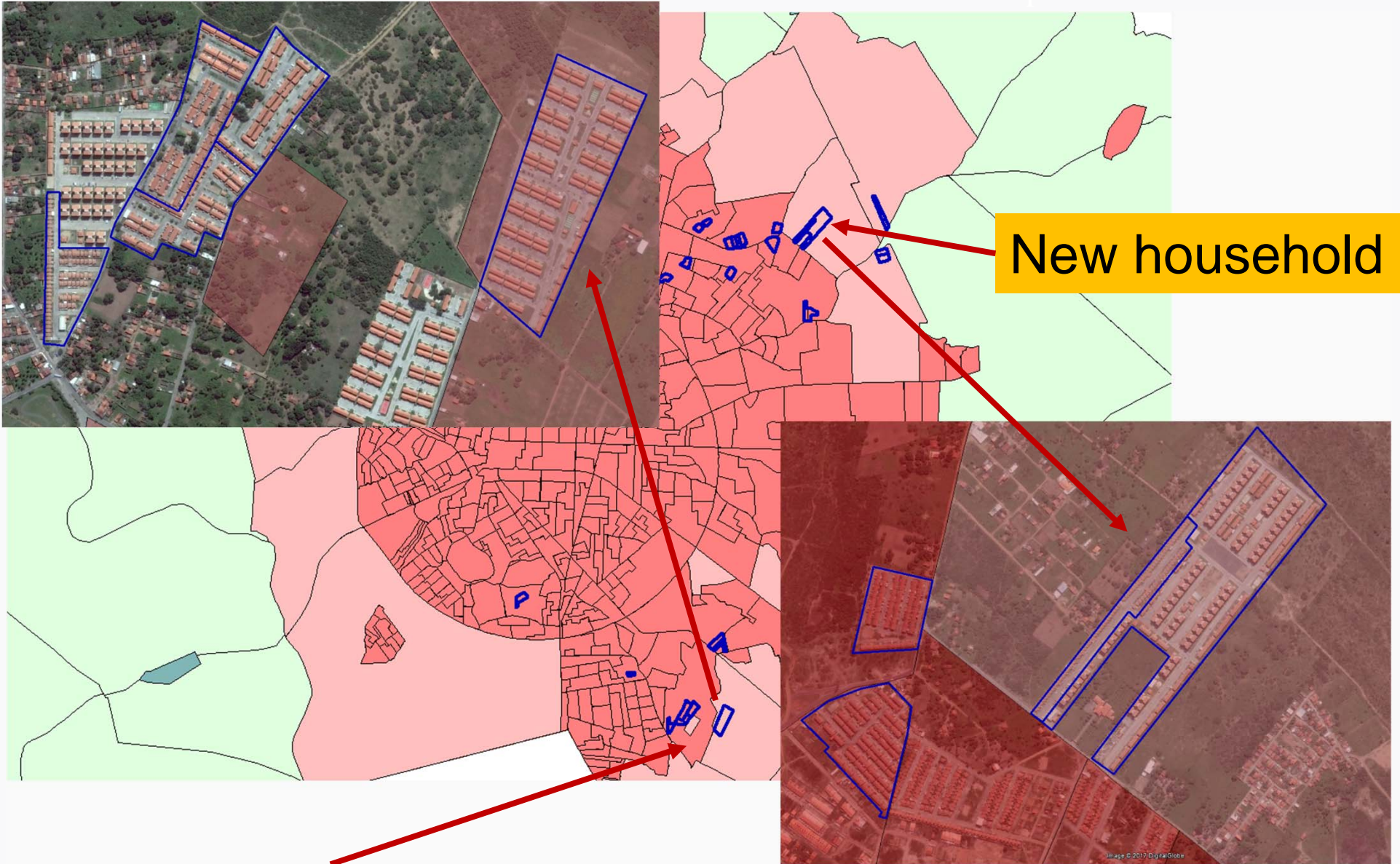


**More than 5 million  
agricultural holdings  
georeferenced**



# Enumeration Area

Detail of Map | [Download the map](#) | [Download the photos](#)



New household

# Legal limits

Detail of Municipality of São João del-Rei, 00.000, 00 with Orthophotos





# Institutional limits

Detail of Municipality of Belo Horizonte (MG) with 0m photos



Recife (PE)



Rio de Janeiro (RJ)



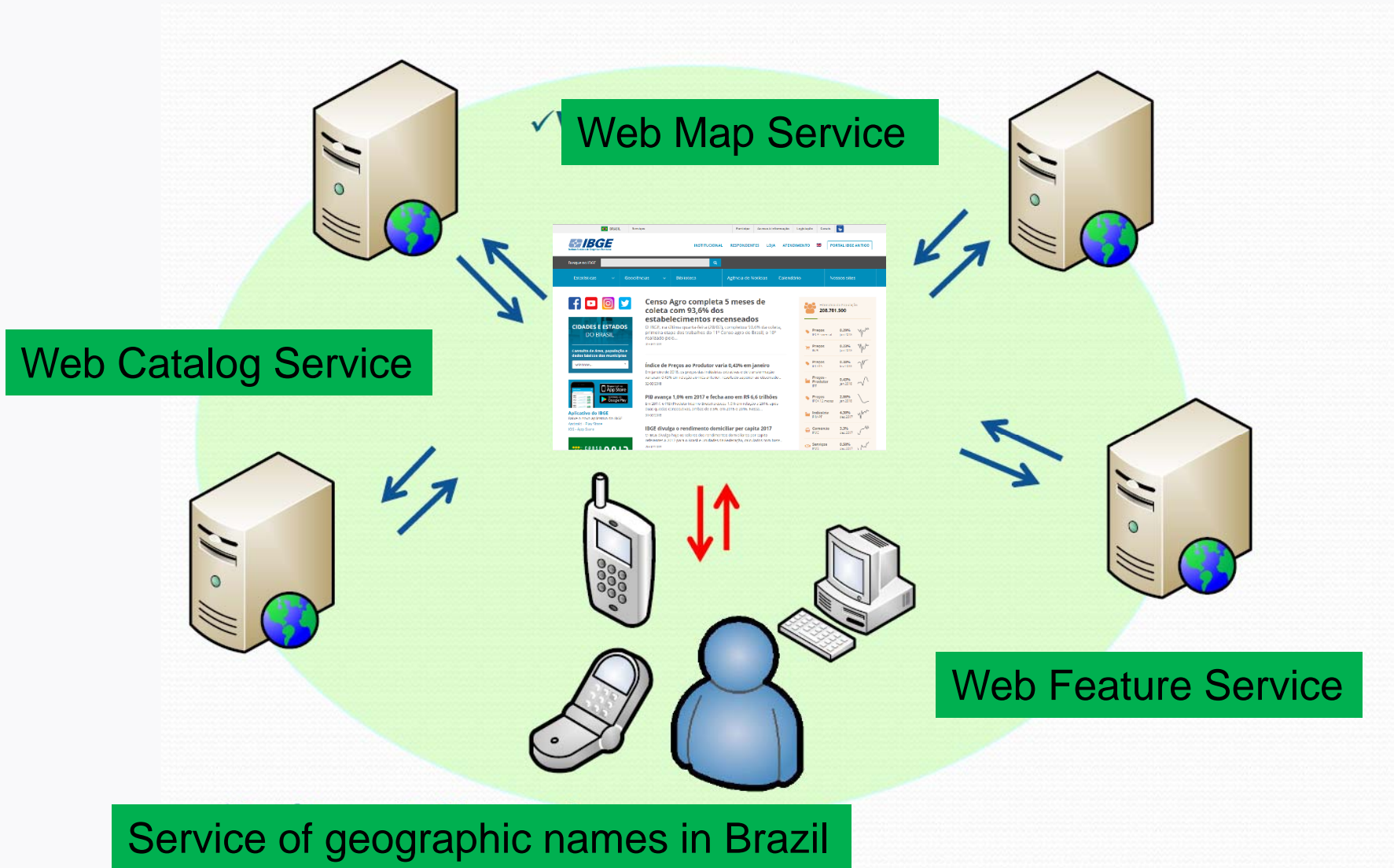
Belo Horizonte (MG)





# Web Map Services

Detail of Municipality of São Paulo do Sul - São Paulo - Aerial Orthophotos





# Web Map Services

Detail of Municipality of São Gonçalo do Amaral, São Paulo, Orthophotos

**sinopseporsetores**

Acesso à Informação **BRASIL**

Mapa Satélite

---

**censo2010**

Visão geral da população em terras indígenas no Brasil

---

**censo2010 Aglomerados Subnormais**

Síntese das Variáveis Domicílios particulares permanentes - energia elétrica - Tinham

RJ RIO DAS PEDRAS Comparar

**Legenda**

Domicílios particulares permanentes - energia elétrica - Tinham	
23 a 154 (16 setores)	
162 a 214 (15 setores)	
228 a 269 (15 setores)	
272 a 313 (15 setores)	
346 a 663 (14 setores)	
Dados indisponíveis	

Opacidade: 50 %

Informações

Domicílios particulares permanentes - energia elétrica - Tinham

267 - Neste setor

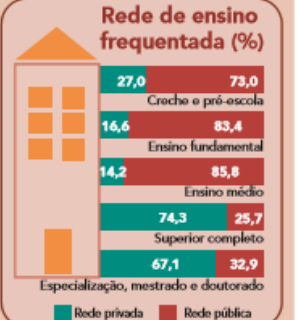
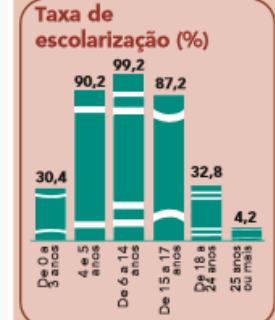
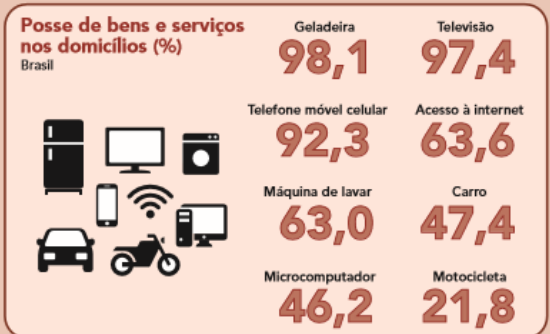
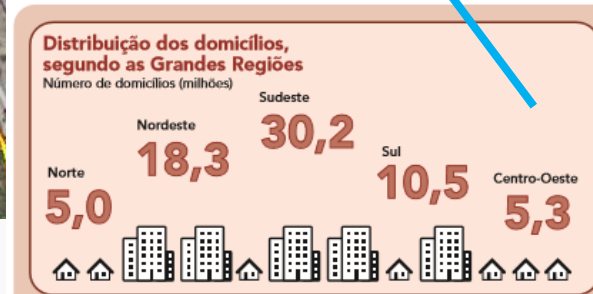
Sector: 330455705210573  
RIO DAS PEDRAS, Rio de Janeiro - RJ

Clique no setor para mais informações

# Statistical and Geographic Information



Coordinates: Latitude, Longitude and Altitude  
 Demarcation of Properties and Special Areas



Fonte: IBGE, Diretoria de Pesquisas, Coordenação de Trabalho e Rendimento, Pesquisa Nacional por Amostra de Domicílios Contínua 2016.



# Thank you!



**Directorate of Geosciences**  
**João Bosco de Azevedo**  
**+55 21 2142-4997**  
**[joao.azevedo@ibge.gov.br](mailto:joao.azevedo@ibge.gov.br)**