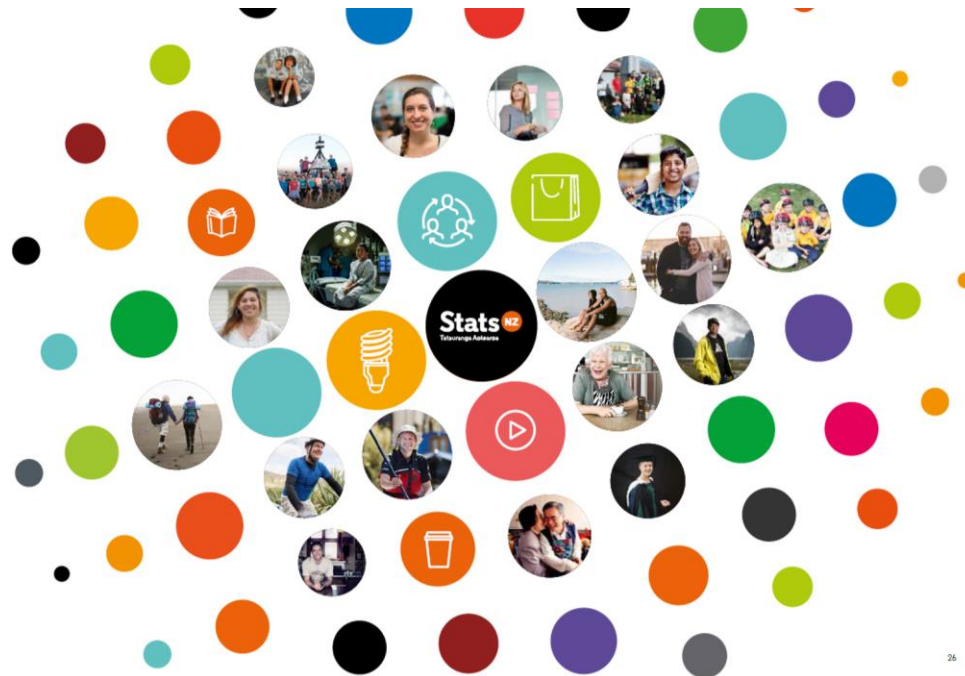


# Open data at Stats NZ

**Teresa Dickinson**  
**New Zealand Deputy Government Statistician**



# How New Zealand scores

## Open Data Watch Open Data Inventory 2016

Globally ranked 17

Ranked number 1 in region

Overall score 65

Coverage 55 Openness 75

Looking to improve on these scores, but...

**We're higher than Australia**

# Unleashing the power of data to change lives



Legal and  
institutional  
settings

Technology



Partnerships

Capability  
building and  
resources

# Legal and institutional settings

- **Stats NZ operating principles**
  1. Data is open by default
  2. Trust and confidentiality
- **Data Functional Lead** role for New Zealand
- Responsibility for **Open Data** transferred to Stats NZ
- **Review of statistical legislation** underway – will enable better sharing of data.



# Technology

- **Innovation Web site** – exposing more data
- **Machine readable data** – we started with csv files, we are now developing true machine readable **APIs**.
- Full **aaS** approach to range of IT
- We value **compliance with international standards** and will ensure that our new technology is **SDMX compliant**
- **Integrated Data Infrastructure**



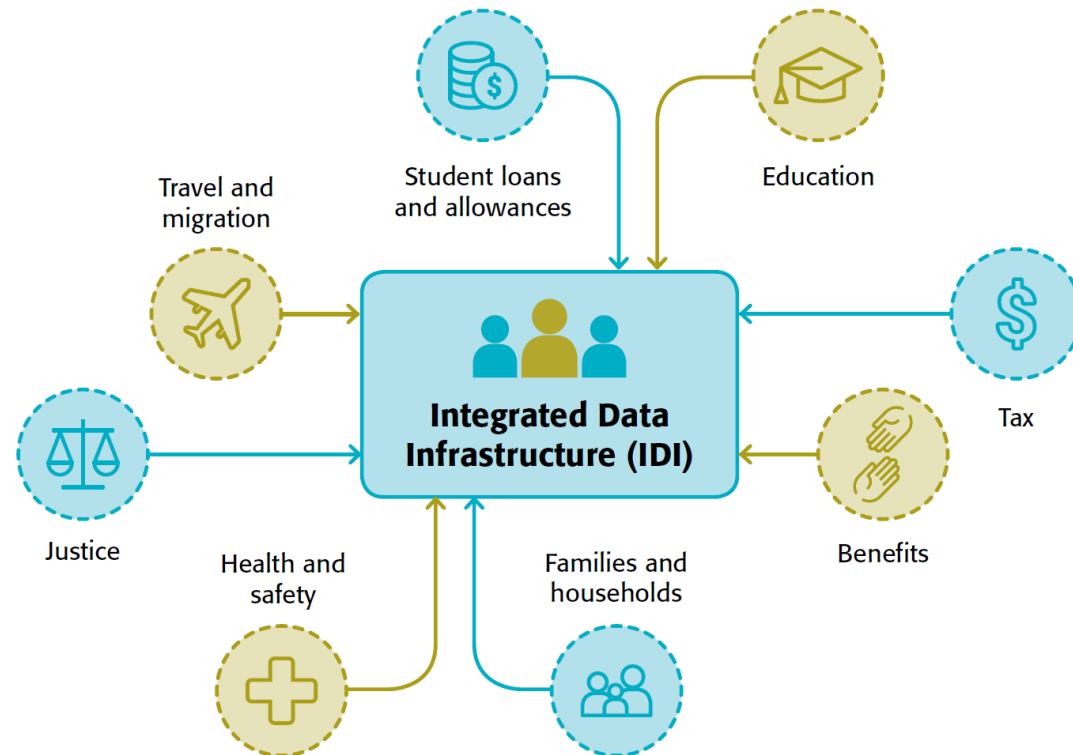
# Integrated data for a better New Zealand

Statistics New Zealand's **Integrated Data Infrastructure (IDI)** is a rich analytical environment comprising linked administrative data from across government, survey data such as the 2013 Census, and data from non-governmental organisations.

The IDI provides a longitudinal view of people and their families through their interactions with government. It is a safe access point for researchers to utilise the resulting data.

The Integrated Data team refresh the IDI quarterly, facilitate the sharing of metadata and code, and support other capability building to optimise the use of the tool.

The **Longitudinal Business Database (LBD)** complements the IDI with microdata about businesses.

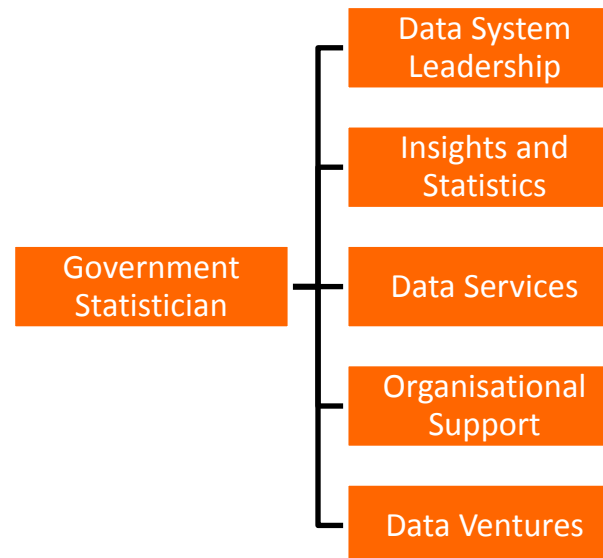


Statistics New Zealand operates a five-safes environment, balancing privacy and confidentiality with data insights.

For information about applying to use the IDI or to learn about how we keep the data safe, see [www.stats.govt.nz/idi](http://www.stats.govt.nz/idi)

# Capability building and resource mobilization

- Job family review
- New organisation structure





# Partnerships

- **Data Futures Partnership**
  - Across government
  - International – **Netherlands Centre for Big Data Statistics**
  - Non-government agencies including intermediaries
- Figure NZ** <https://figure.nz/>



# Thank you

