

National Programs and Models of Federal Collaboration

Tim Trainor
US Census Bureau

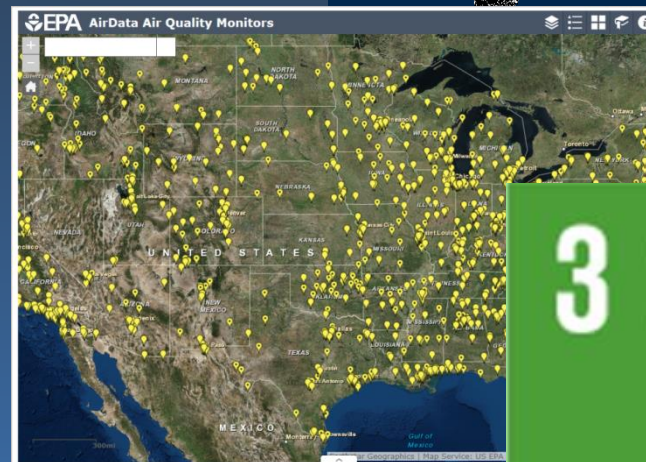
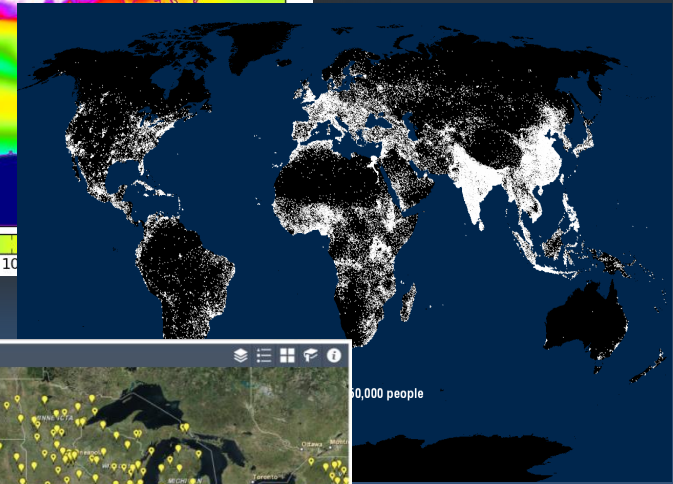
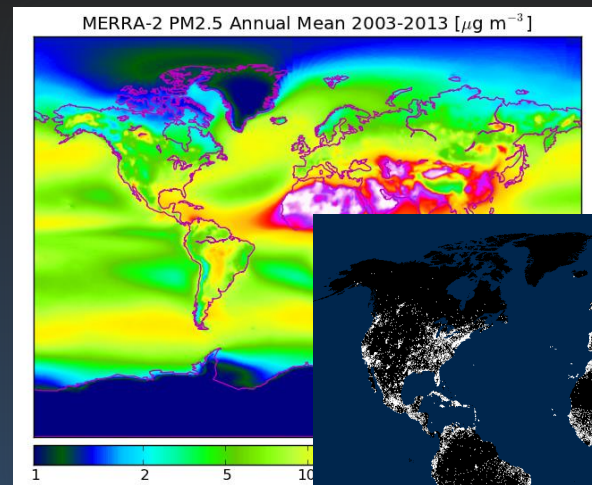
UN-GGIM Side Event:
Geospatial Information and Earth Observations: Supporting
Official Statistics in Monitoring the SDGs
Monday, 7 March 2016

Example Goal | Target | Indicator

Goal 3: Ensure Healthy Lives and Promote Well-being for All at All Ages

Target 3.9 by 2030 substantially reduce the number of deaths and illnesses from hazardous chemicals and air, water, and soil pollution and contamination

Indicator Population in urban areas exposed to outdoor air pollution levels above WHO guideline values

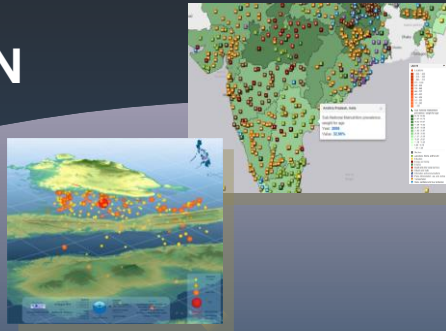


How many datasets are needed to monitor and measure the indicators? What is available?



ESRI

NEW APPLICATIONS AND TOOLS FOR COLLABORATION



Dashboards

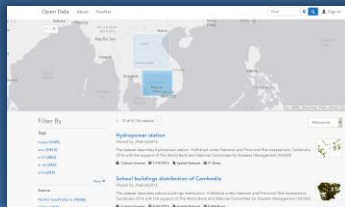


Story Maps



Portal

Data Processing & Management



Open Data

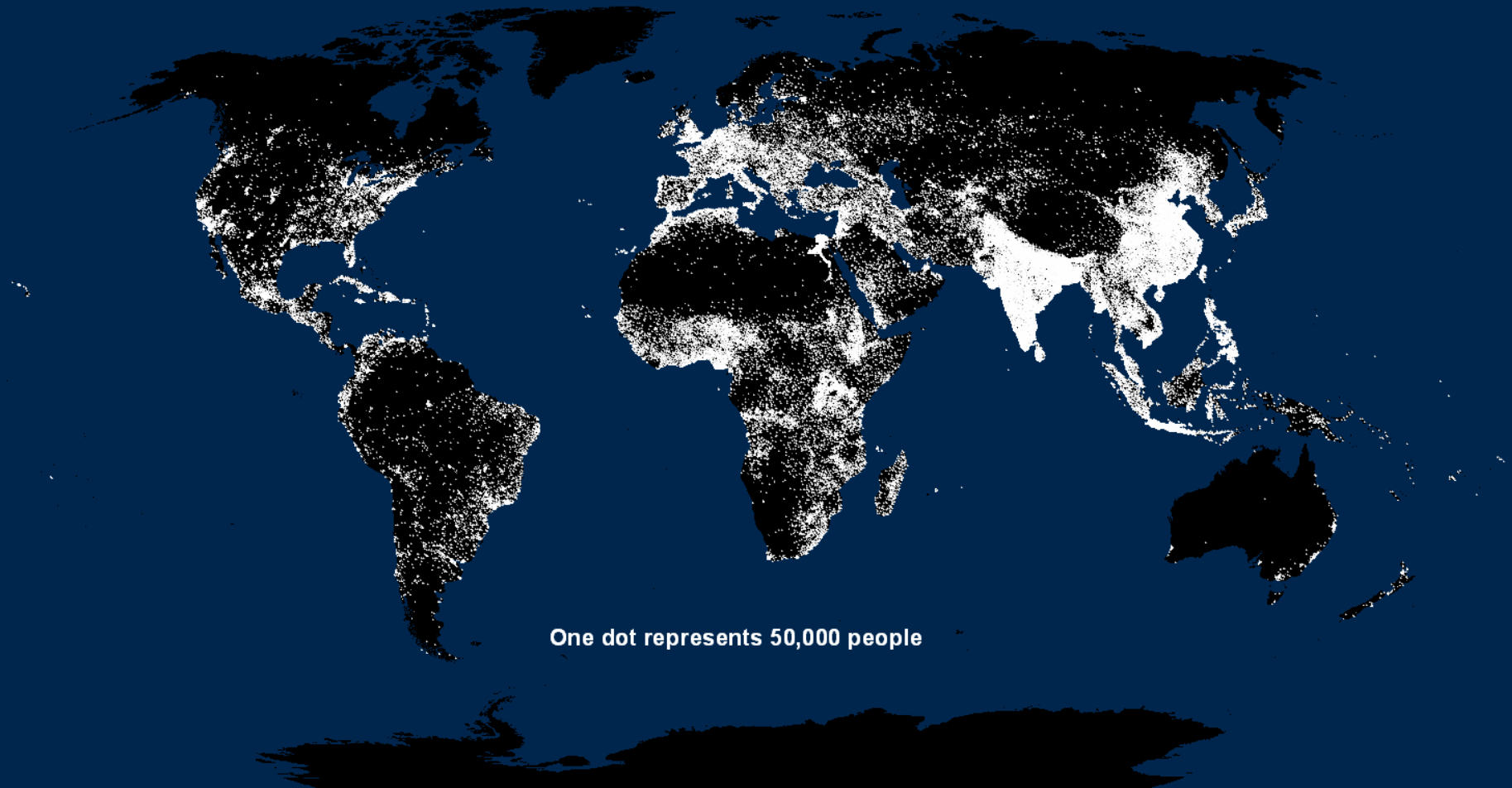
ESRI

MERGING GLOBAL DATASETS

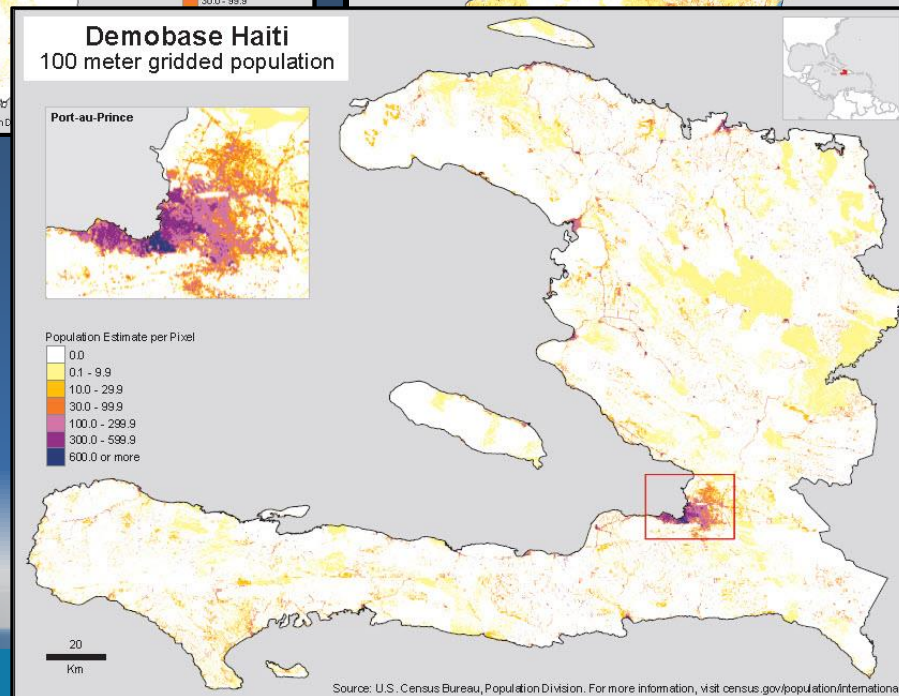
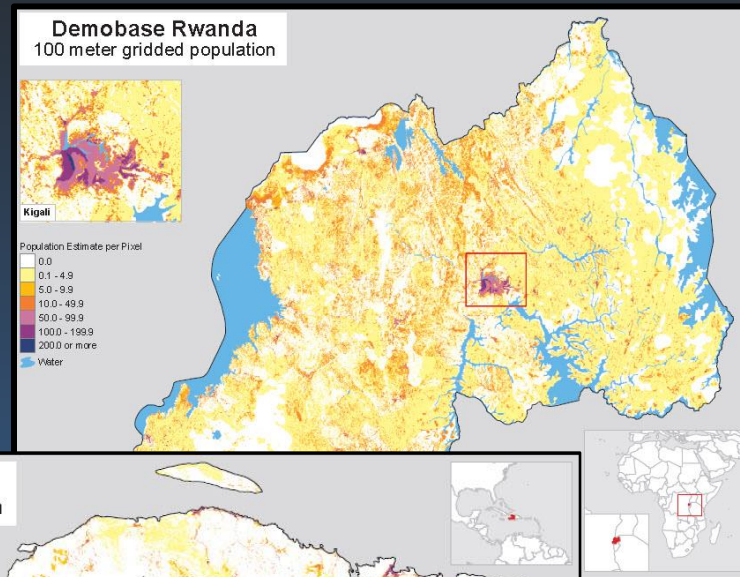
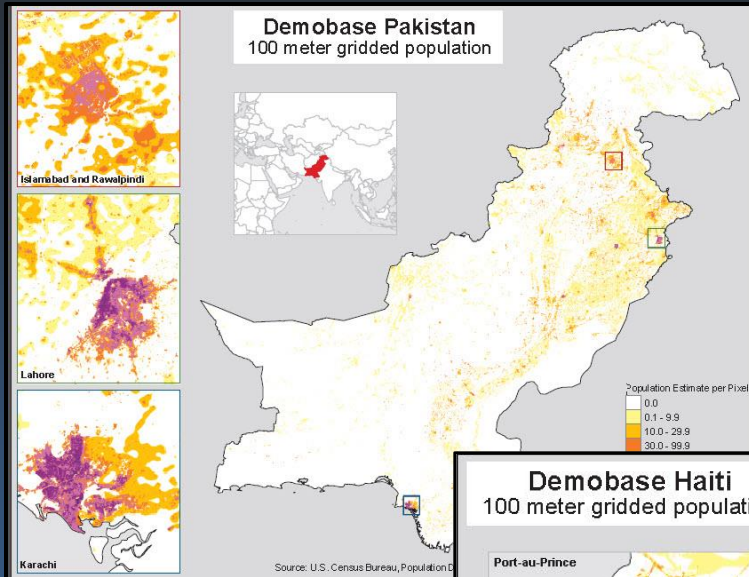


ESRI

Population Distribution of the World



Gridded Population Maps from Census Bureau: Demobase



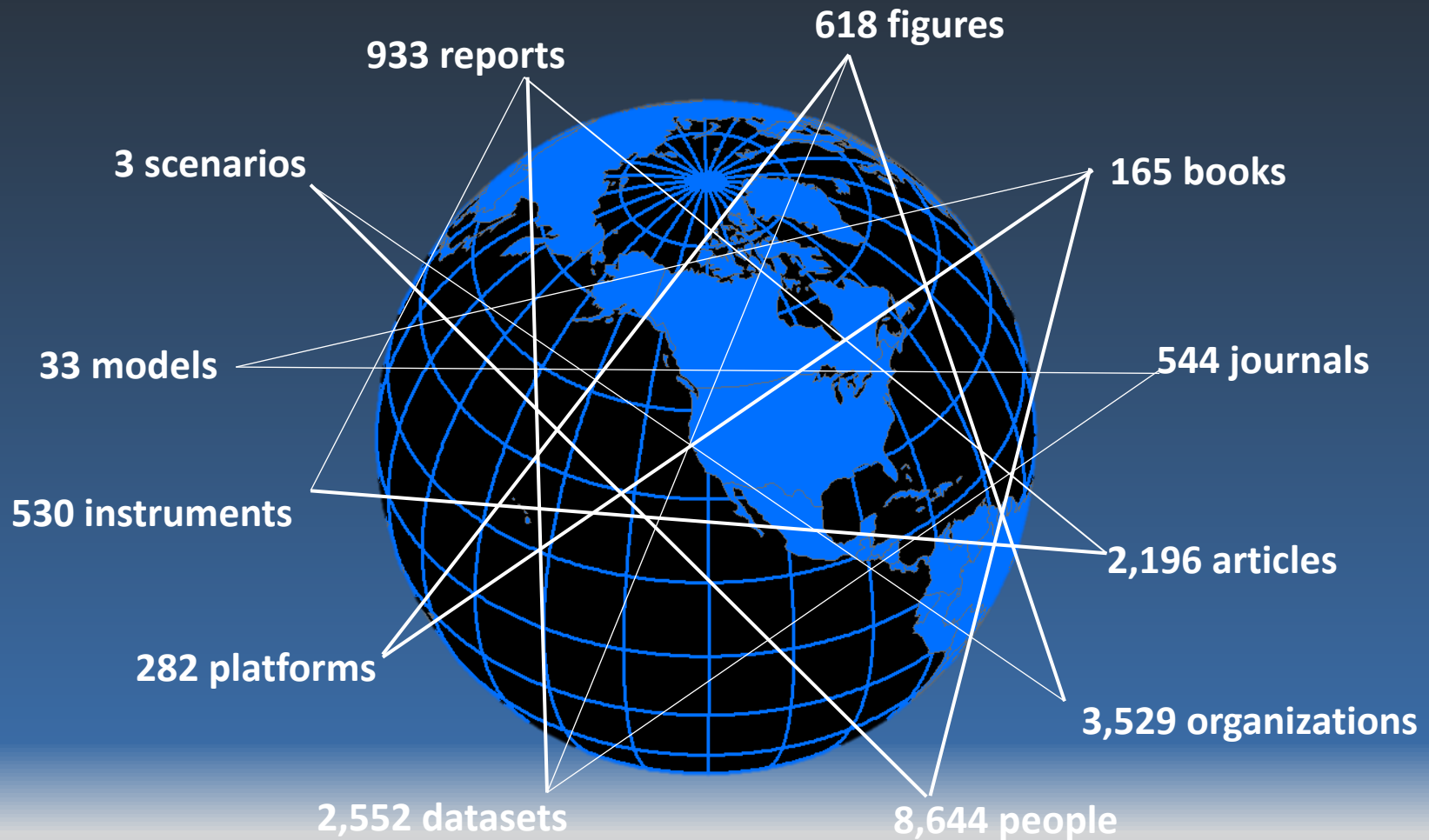
How do we integrate our datasets?



ESRI

Integrating National Program and Initiatives

U.S. Global Change Research Program (USGCRP)



<http://data.globalchange.gov/>

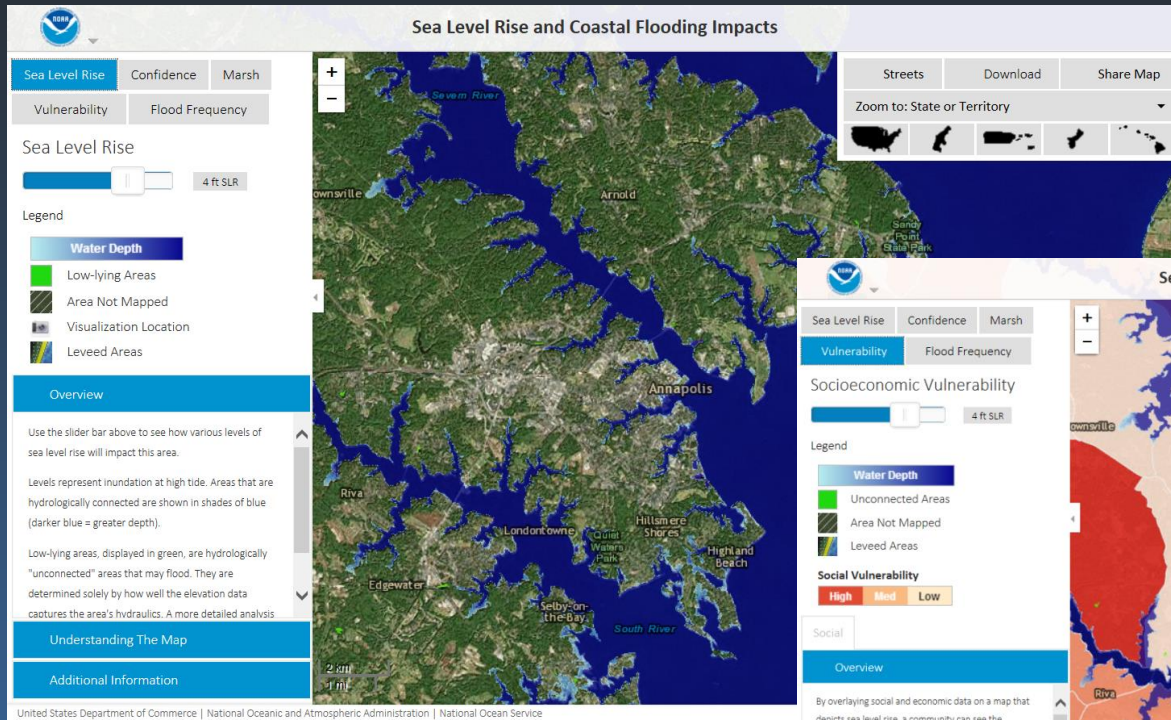
http://data.globalchange.gov/report?report_type=indicator

<http://www.globalchange.gov/browse/datasets>

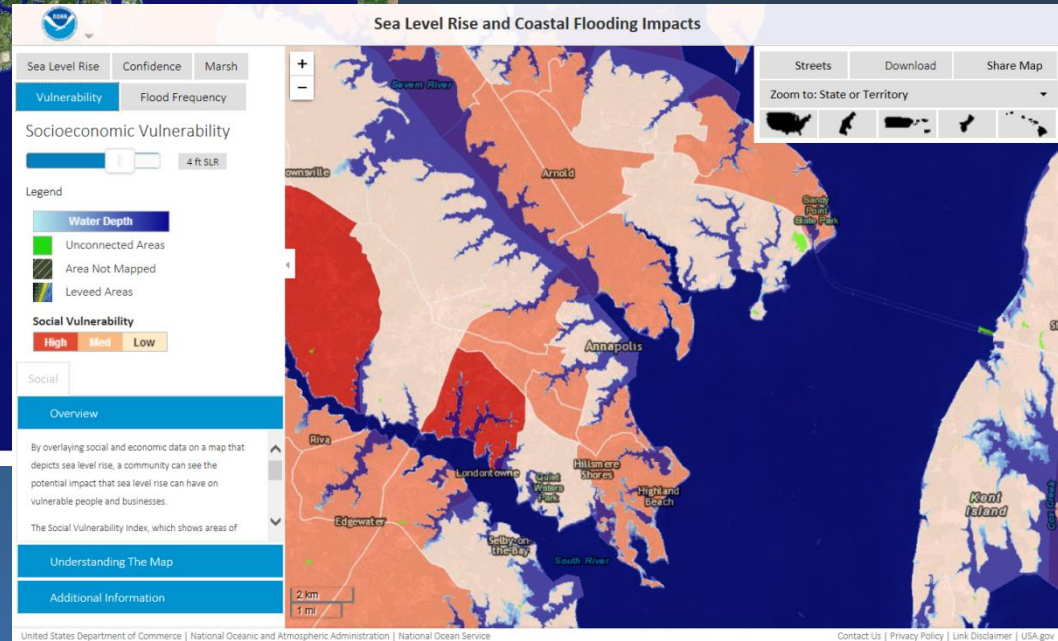
<https://toolkit.climate.gov/>

<https://toolkit.climate.gov/tools/climate-explorer>

Integrating National Program and Initiatives



Color-coded data in the map are based on **Census 2010 demographic information** (tracts) and highlight the location of a community's most vulnerable people.



NOAA tools and datasets

<https://coast.noaa.gov/digitalcoast/tools/slr>

<https://www.ncdc.noaa.gov/cdr>

<https://www.ncdc.noaa.gov/cdr/atmospheric/precipitation-persiann-cdr>

https://www.nodc.noaa.gov/OC5/3M_HEAT_CONTENT/

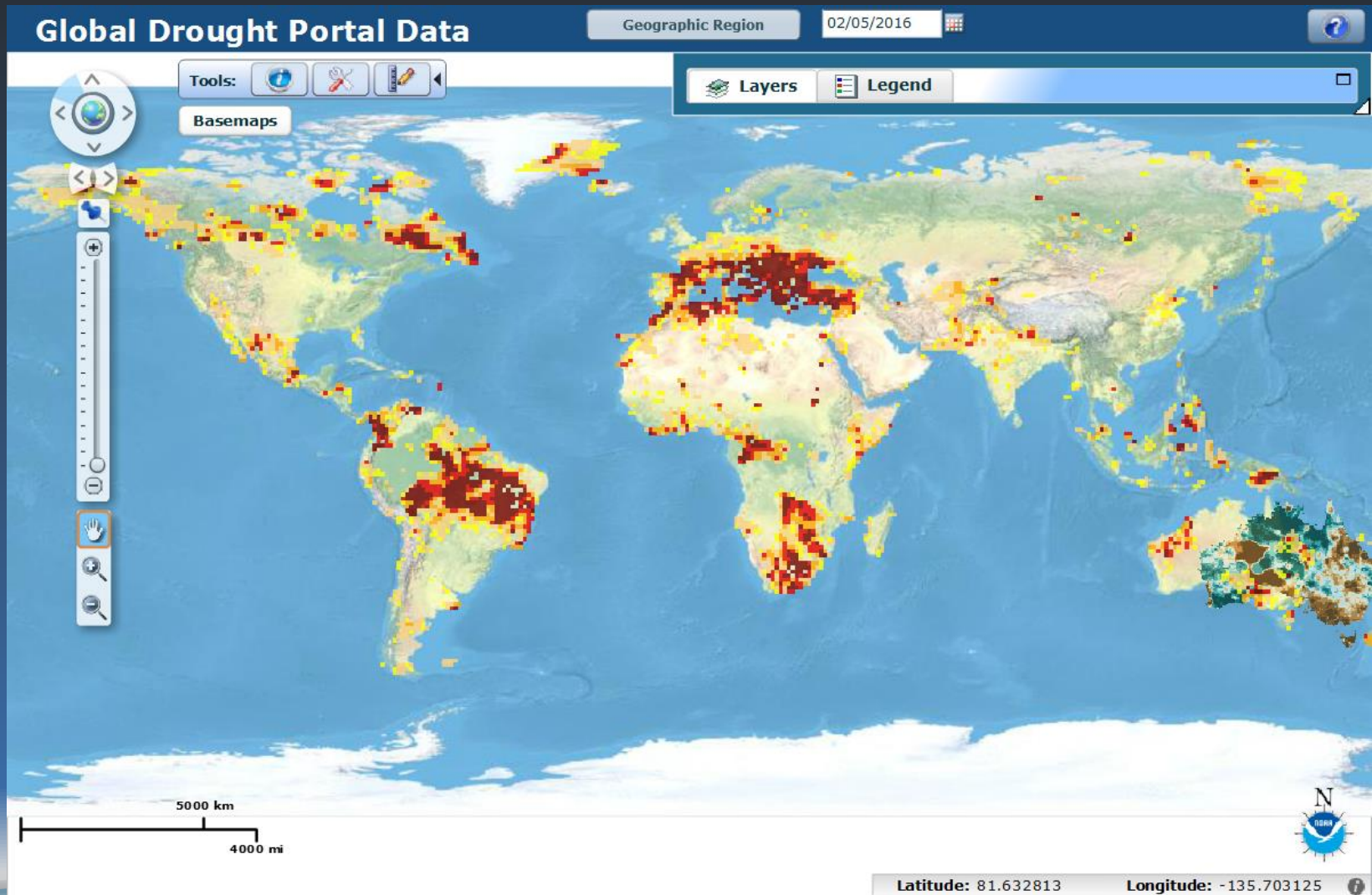
<http://www.ngdc.noaa.gov/geoportal/catalog/main/home.page>

http://www.class.ncdc.noaa.gov/saa/products/search?datatype_family=VIIRS_EDR

VIIRS Nighttime Lights

- http://ngdc.noaa.gov/eog/viirs/download_monthly.html
- http://ngdc.noaa.gov/eog/viirs/download_ut_mos.html

Integrating National Program and Initiatives



Integrating National Program and Initiatives

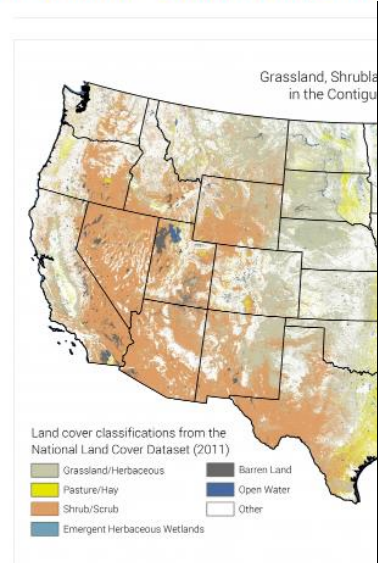
GlobalChange.gov
U.S. Global Change Research Program

ABOUT US/GRIP WHAT WE DO AGENCIES

Understand Climate Change | Explore Regions & Topics | Browse & Find Resources, Data, & Multimedia | Follow News & Updates | Engage Connect & Participate

BROWSE & FIND > INDICATORS

Indicator: Grassland, Shrubland, and Pasture Cover



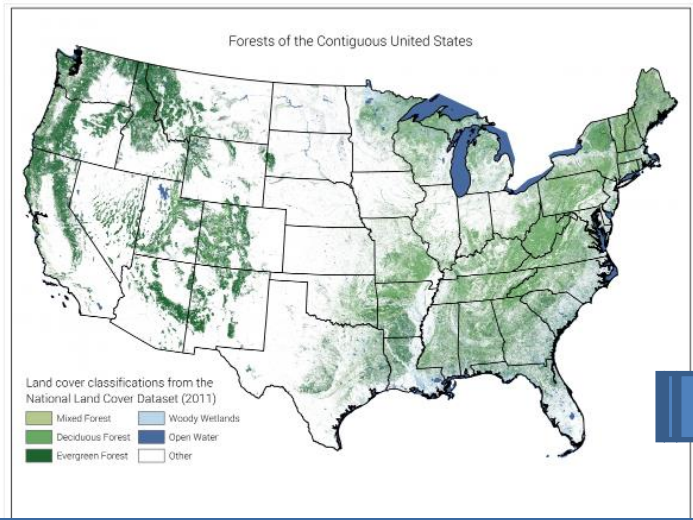
GlobalChange.gov
U.S. Global Change Research Program

ABOUT US/GRIP WHAT WE DO AGENCIES

Understand Climate Change | Explore Regions & Topics | Browse & Find Resources, Data, & Multimedia | Follow News & Updates | Engage Connect & Participate

BROWSE & FIND > INDICATORS

Indicator: Forest Cover



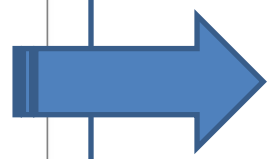
GlobalChange.gov
U.S. Global Change Research Program

ABOUT US/GRIP WHAT WE DO AGENCIES

Understand Climate Change | Explore Regions & Topics | Browse & Find Resources, Data, & Multimedia | Follow News & Updates | Engage Connect & Participate

BROWSE & FIND > INDICATORS

Indicator: **MORE TO COME!**



<http://www.globalchange.gov/browse/indicators/indicator-forest-cover>
<http://www.globalchange.gov/browse/indicators/indicator-grassland-shrubland-and-pasture-cover>