

Critical questions for statistics and geospatial communities

Pali Lehohla
Statistician-General South Africa



1217



10135



CELL©™
7499



PEPSI.

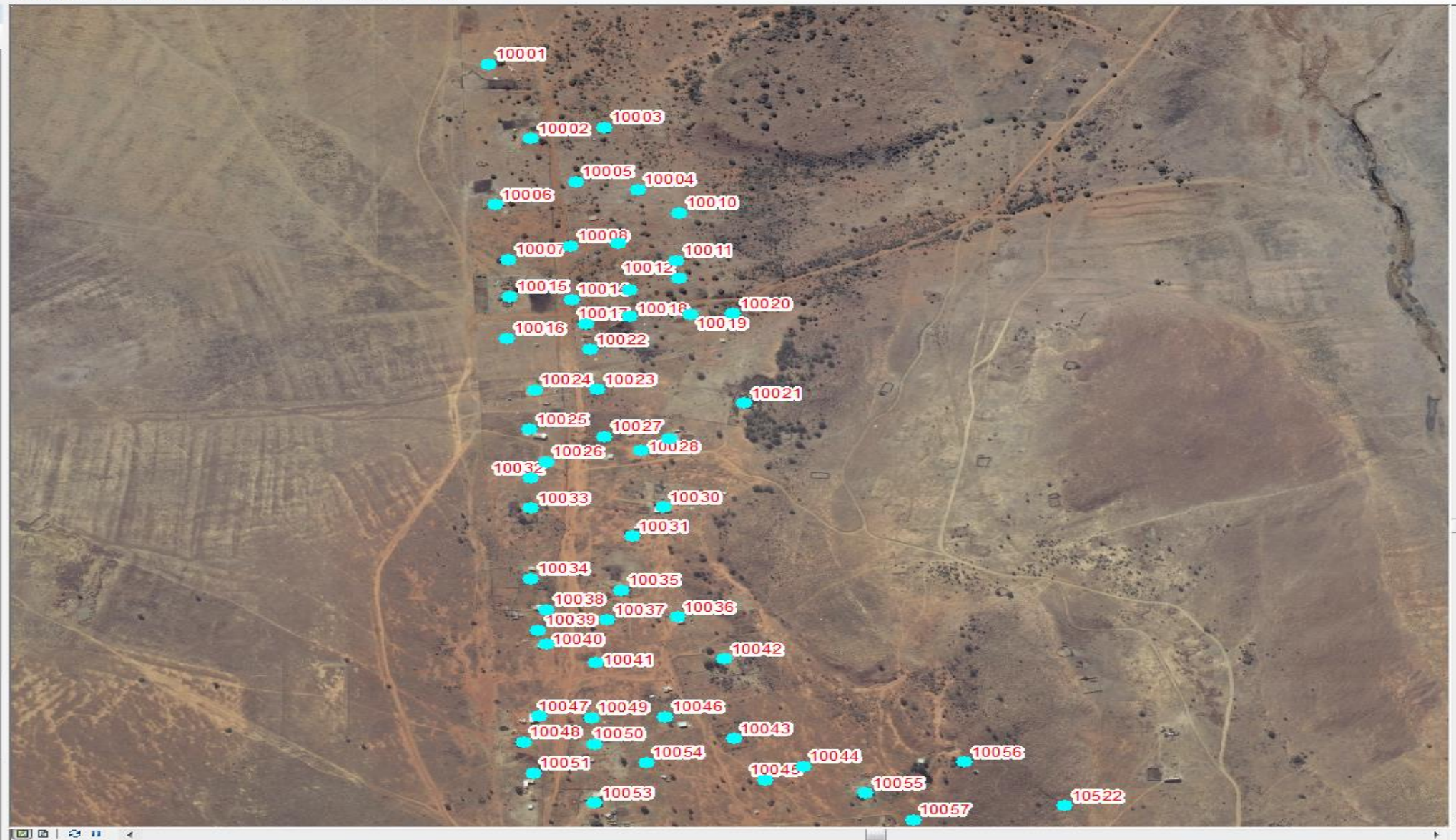
7499

NKADIMENG ST.

© Copyright 2010. All

Table Of Contents

- Unique_Identifiers_2nddata
- UNIQUE_IDENTIFIERS
- ADDRESSES
- Buffalo_City_BY_SAPO
- PROD_Munics_Merged_Nam
- Northern_Cape2nd
- NationalAddresses
 - <all other values>
 - Start2Date
 - 2009-2013
 - 2013-2014
 - 2014-2015
- PROD_Munics_Intersect3
 - <all other values>
 - CHECKED_DA
 - 15/08/12-21/08/14
 - Outstanding, Icomplete pc
- 6th_data_addresssed
- PROD_Munics_Intersect2
- Villages_SA_Status_kARABO
 - <all other values>
 - STATUS
 - Assigned
 - Assigned by SAPO
 - Incomplete Points
 - Outstanding Points
- VILLAGES_SA_2011_APRIL_20:
 - <all other values>
 - STATUS
 - 0
 - Addressed
 - Incoplete Villages
 - Need Verification, not sequ
 - Untouched Points
- MN_SA_2011_MP_LIMP
- Tribal_Authorities
- DC_SA_2011_MP_LIMP
- MP_LIMP_PROV_BONDARIES
- SP_SA_2011_MAP_PRODUCTI



- Who produces the data
- Who owns it
- What are the institutional and governance arrangements
- What may statistics agencies do
- Is there still value in keeping the Commission as a Statistics Commission or should change start here