



ISWGNA and AEG: Mandate and governance

13th meeting of the
Advisory Expert Group
on national accounts

1-3 October 2019
Washington D.C.

ISWGNA



- Set up by the United Nations Statistical Commission (UNSC) to enhance cooperation among international organizations working in the same field.
- Five members since the early 1980s:
 - Eurostat, International Monetary Fund (IMF), Organization for Economic Cooperation and Development (OECD), United Nations and World Bank
- Chair of the group rotates among the five organizations
- Secretariat is at the UNSD
- ISWGNA functions at two levels: “Management Group” and “National Accountants”



Mandate

- Provide strategic vision, direction and coordination for the methodological development and implementation of the SNA in national, regional and international statistical systems;
- Revise and update the SNA and develop supporting normative international statistical standards and other methodological documents on national accounts and supporting statistics;
- Promote the development of databases at international, regional and national level on national accounts statistics;
- Promote the implementation of the SNA and supporting statistics; and
- Promote the use of national accounts and supporting statistics in policy formulation.

Governance Arrangements



- UNSC – provides the mandate of the ISWGNA, endorses its work programme and monitors its work progress
- ISWGNA - carries out the mandate and reports progress on its programme of work to the UNSC
 - Engages technical expert groups, city groups or other expert groups to carry out the work programme.
 - Separate project management frameworks may be developed for large projects (eg. revision of SNA)
- ISWGNA: Management Group - ensures appropriate outputs and inputs for the work of the ISWGNA
 - Managers also act within their own organizations to further the agreed goals and objectives of the ISWGNA.

Governance Arrangements



- ISWGNA: National Accountants – sponsors and facilitates the technical work of the work programme of the ISWGNA
- AEG - assists the ISWGNA in carrying out its work programme, resolves issues on the research agenda of the SNA and reviews documents and tools for the SNA implementation programme
 - 18 members from national, regional and international statistical organizations (plus representatives from the 5 international organizations) with all regions of world represented
 - Members invited with views toward particular areas of expertise
 - Members act on personal basis rather than as representatives of their organization
 - AEG and ISWGNA members are entitled to vote on issues where consensus cannot be found
 - Chair of ISWGNA also serves as chair of AEG

AEG: Terms of Reference



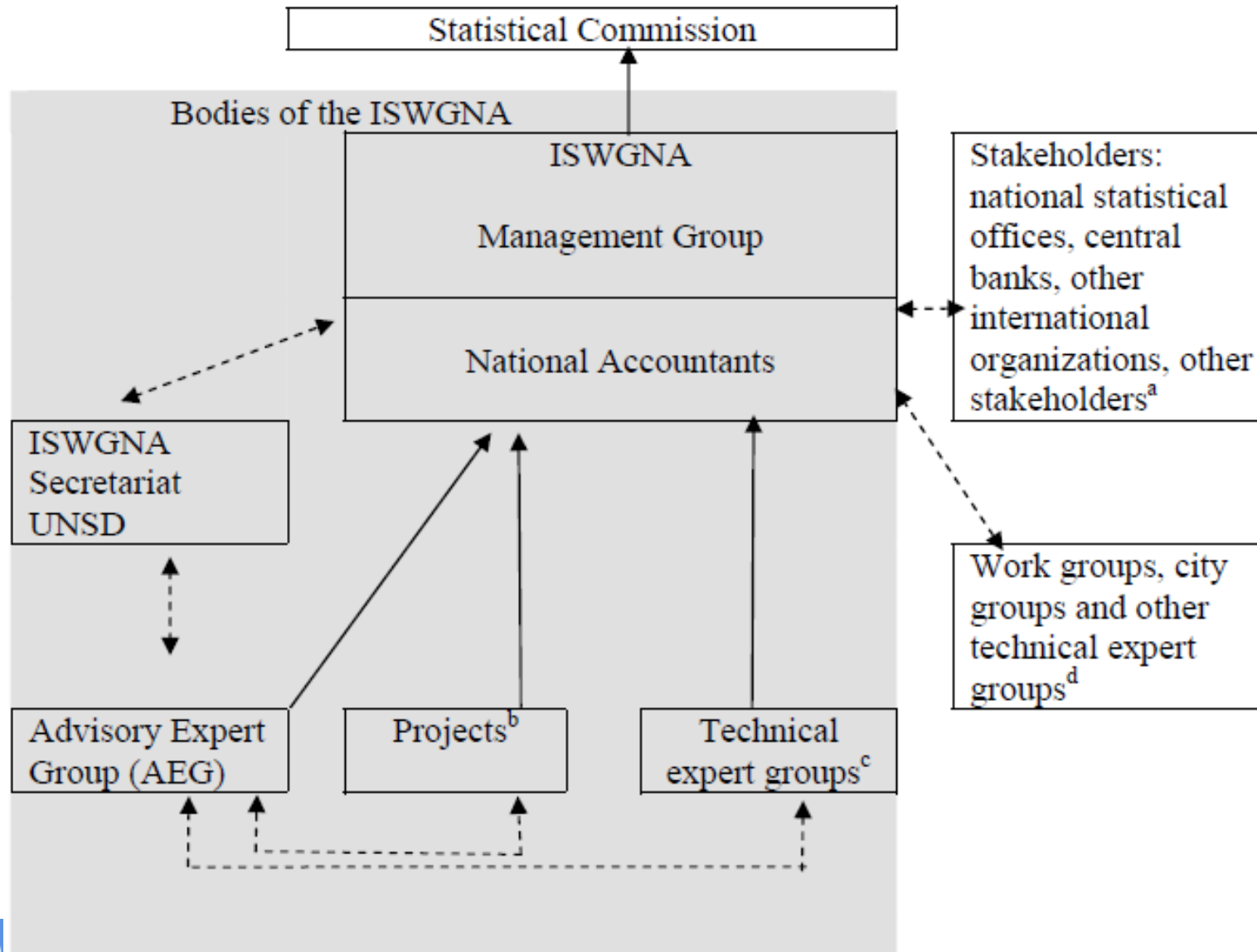
- Evaluate and contribute to manuals and handbooks for guidance and training in the implementation of the SNA and supporting statistics
- Review and contribute to the methodological development of the SNA through research and assessing the appropriateness of proposals for clarification, interpretation and changes to the SNA;
- Review and contribute to the formulation of communication and dissemination strategies and of statistical responses on emerging policy issues based on the SNA
- Consider proposed international data collection activities in line with the normative standards and accompanying international recommendations in an efficient and cost-effective way

Governance Arrangements



- Projects, Technical Expert Groups, City Groups – may be convened to advance research on particular normative and methodological matters
 - Limited life spans and with focus on particular issues
 - Fall within scope of national accounts, but have their own mandates and governance structures
 - ISWGNA will coordinate with these the groups to take account of their work in the work programme of the ISWGNA
 - For large projects (eg. the revision of the SNA) it may be necessary to develop separate project management frameworks
- Secretariat - UNSD serves as the main source of logistical and administrative support to the work programme of the ISWGNA.

Governance Structure



→ Report to
 ↔ Liaise with

^a Includes, for example, academia and line ministries.

^b Includes specific projects needing separate project management frameworks, (i.e. update of the 1993 SNA)

^c Includes expert groups to advance specific research on issues on the SNA research agenda

^d ISWGNA liaises and consults with these groups to coordinate outputs.



Thank you