



**Session:**

# Labelled Maps – Verification, entering names into a GIS and Google Maps/Earth

**V1.0**

**Pier-Giorgio Zaccheddu**

Federal Agency for Cartography and  
Geodesy (BKG)

Richard-Strauss-Allee 11

60598 Frankfurt am Main

Tel.: +49 69 6333 305

Fax: +49 69 6333 441

Email: [pier.zaccheddu@bkg.bund.de](mailto:pier.zaccheddu@bkg.bund.de)



## Content

### Import and display of a database in a GIS

- Import and display with ESRI ArcGIS and QuantumGIS
- Creation of a map using with ESRI ArcGIS

### Verification, entering names in Google Maps/Earth

- Export of a kml-file directly from ESRI ArcGIS
- Export a shapefile from the GIS and convert with open source tools
- Publish data in Google Earth through \*.kml/kmz-format



# Display names from the database into a GIS: Coordinate System!!!

**The World Coordinate Converter: WGS84 → Luzon 1911 conversion?**

Website: <http://twcc.fr/en/#>



# Display names from the database into a GIS: ESRI Arc GIS

# Display names from the database into a GIS: Quantum GIS

**QuantumGIS**



- Vector data: **DIVA-GIS**  
URL: <http://www.diva-gis.org/gData>  
abstract: download free geographic (GIS) data for any country in the world
- Vector data: **Natural Earth**  
URL: <http://www.naturalearthdata.com>
- Vector data: **OpenStreetMap (OSM)**  
URL: <http://download.geofabrik.de/>
- GN data: **geonames.org**  
URL: <http://www.geonames.org/>  
abstract: download free of charge under a creative commons attribution license



# Create a map with the GIS: ESRI ArcGIS

**Nordpfeil Auswahl**

Vorschau

Auf Seitengröße einpassen

Eigenschaften...

Weitere Styles

Speichern... Zurücksetzen

OK Abbrechen

**Legende**

- demo1\_public\_geoname
- ne\_10m\_populated\_places
- ne\_10m\_urban\_areas

- Change of style and labels
- Set title, north arrow, scale bar
- Insert a legend



## Content

### Import and display of a database in a GIS

- Import and display with ESRI ArcGIS and QuantumGIS
- Creation of a map using with ESRI ArcGIS

### Verification, entering names in Google Maps/Earth

- Export of a kml-file directly from ESRI ArcGIS
- Export a shapefile from the GIS and convert with open source tools
- Publish data in Google Earth through \*.kml/kmz-format



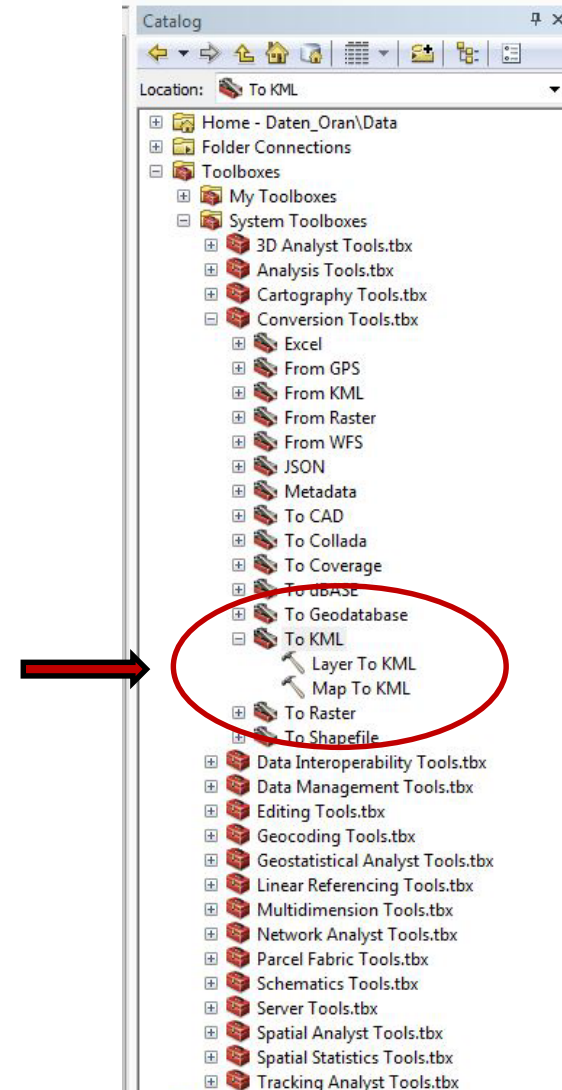
## What are kml/kmz-files?

The general default file type for spatial data in Google Earth and Google Maps is KML (Keyhole Markup Language) or KMZ (a compressed or "zipped" KML file).

- KML files are text-based and employ coding tags like those used for XML or HTML programming.
- Google Earth processes KML files in a way that is similar to how web browsers process HTML and XML files.
- KML syntax tells applications like Google Earth and Google Maps how to display geographical features such as points, lines, images, polygons, and models.
- Each location included in a KML file must have longitude and latitude coordinates assigned to it.

## 1. Possibility

[demo1.kml](#)



# Export a shapefile from the GIS and convert with open source tools

## 2. Possibility

Several tools are available to convert shape-files into a kml/kmz-format for the Google Maps/Earth application:

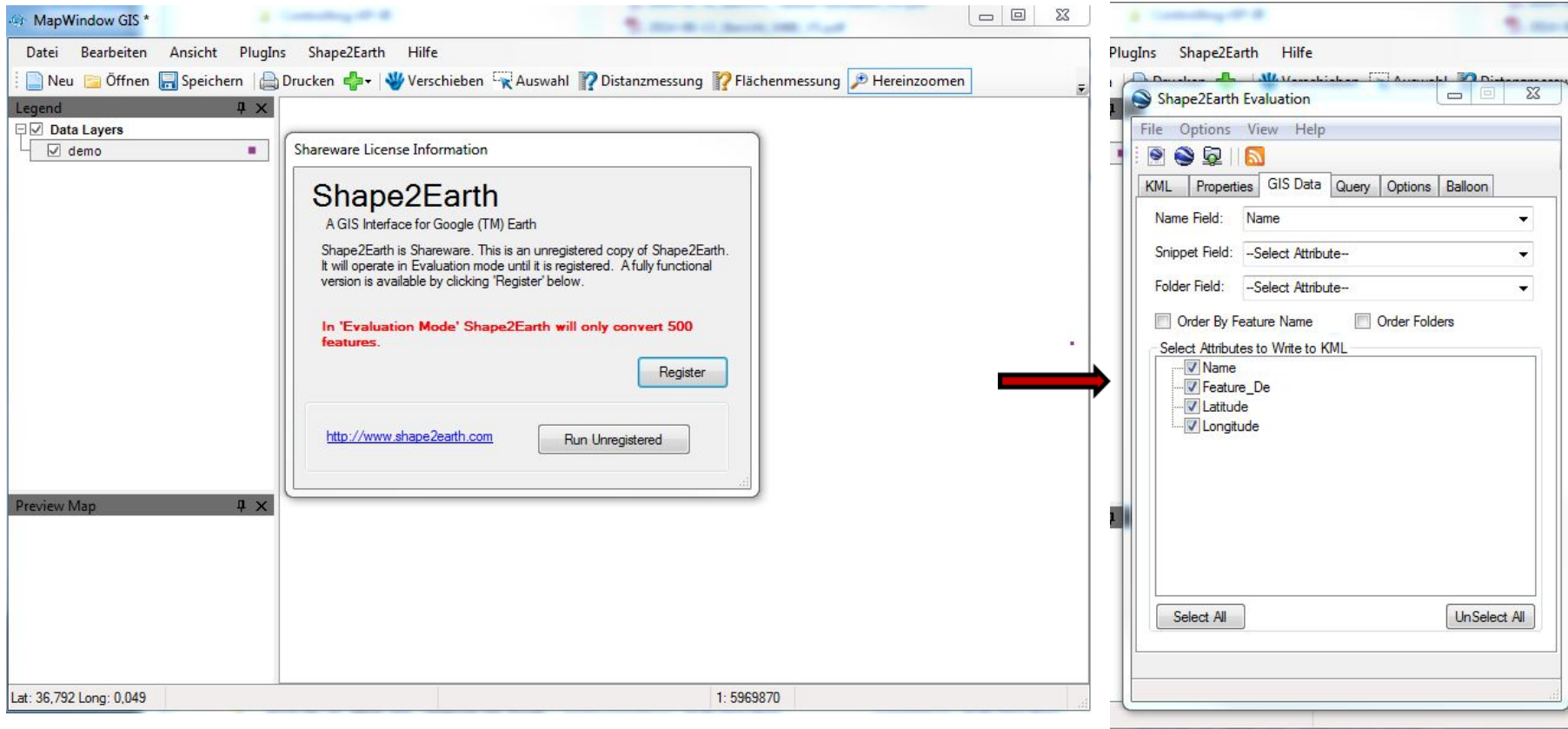
Software: Shape2Earth4MapWindow-v1.55-setup.exe (open source)

URL: <http://www.ulozto.net/x4B96CX8/shape2earth4mapwindow-v1-55-setup-exe>

Software: Shp2kml.exe (open source)

URL: [http://sourceforge.net/project/showfiles.php?group\\_id=146609](http://sourceforge.net/project/showfiles.php?group_id=146609)

## 2. Possibility - Shape2Earth4MapWindow-v1.55-setup.exe



→ Import **\*demo\_shp2kml.kml\*** into GoogleEarth



# Publish data in Google Maps / Earth through \*.kml/kmz-format

## Verification

1. Possibility: [demo1.kmz](#)

2. Possibility:

→ Start Google Maps/Earth application

→ Import \*.kml\* into Google Maps/Earth



# Publish data in Google Maps / Earth through \*.kml/kmz-format

# Publish data in Google Maps / Earth through \*.kml/kmz-format

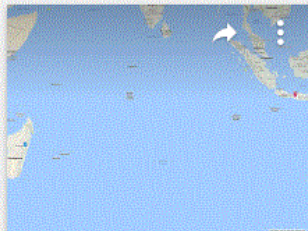


# Publish data in Google Maps / Earth through \*.kml/kmz-format

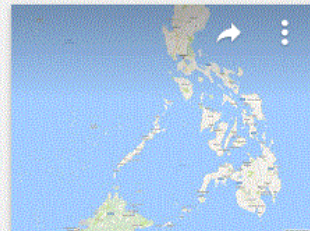
Google My Maps

+ NEUE KARTE ERSTELLEN

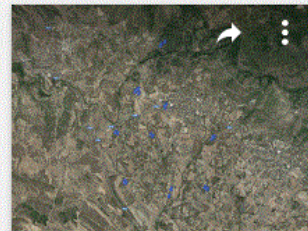
ALLE **EIGENE** NICHT VON MIR GETEILT ZULETZT VERWENDET ERKUNDEN



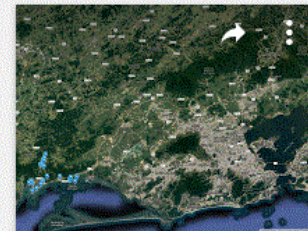
Fieldwork United Nations  
11.03.2018



Demo1\_Manila  
11.03.2018



Piante Olive Zaccheddu  
11.03.2018



Map around Rio de Janeiro  
22.02.2018

- Register at GoogleMaps
- Create your own maps...





Thank you for your attention!