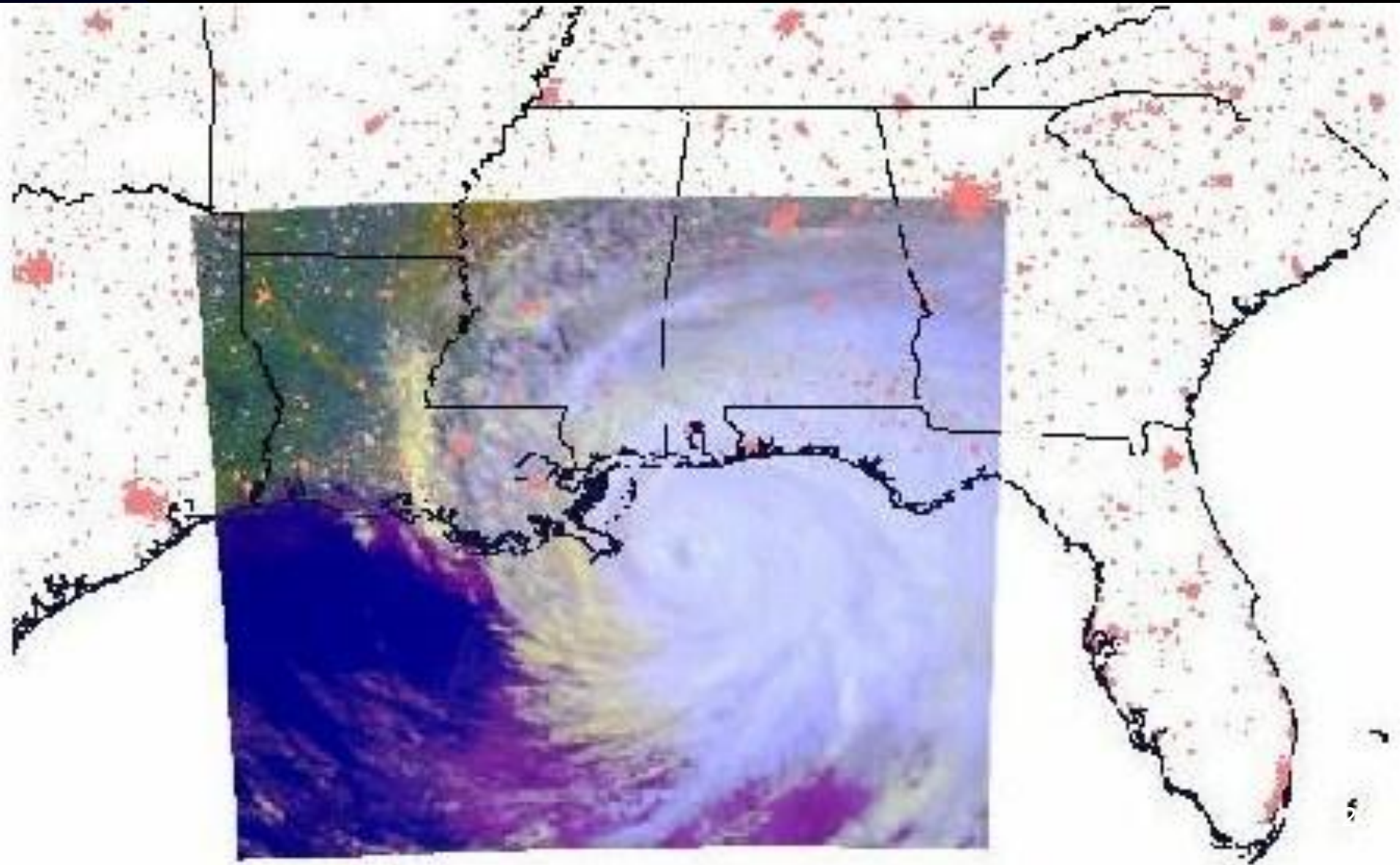
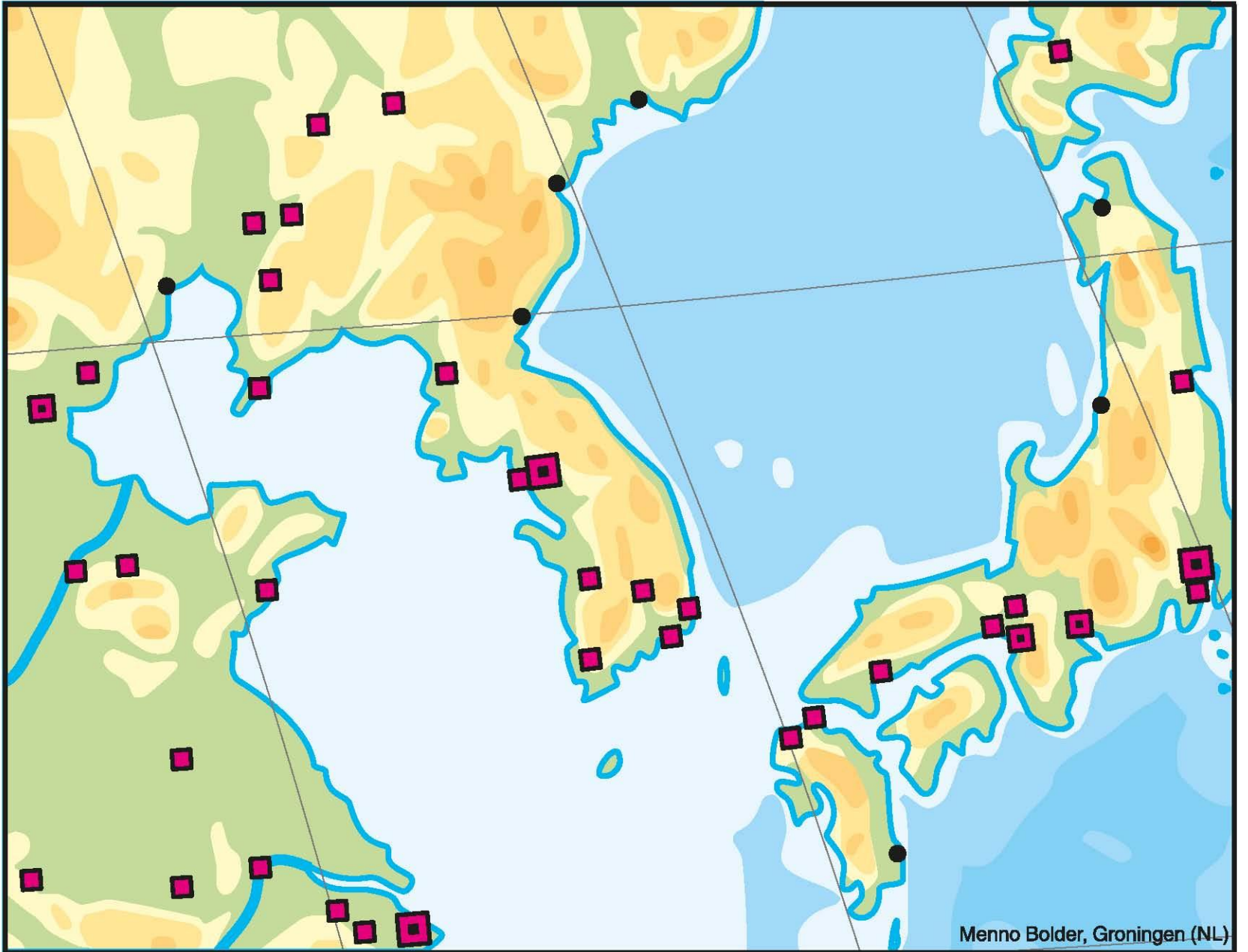


Names, Mapping and GIS

Ferjan Ormeling
UNEGGN

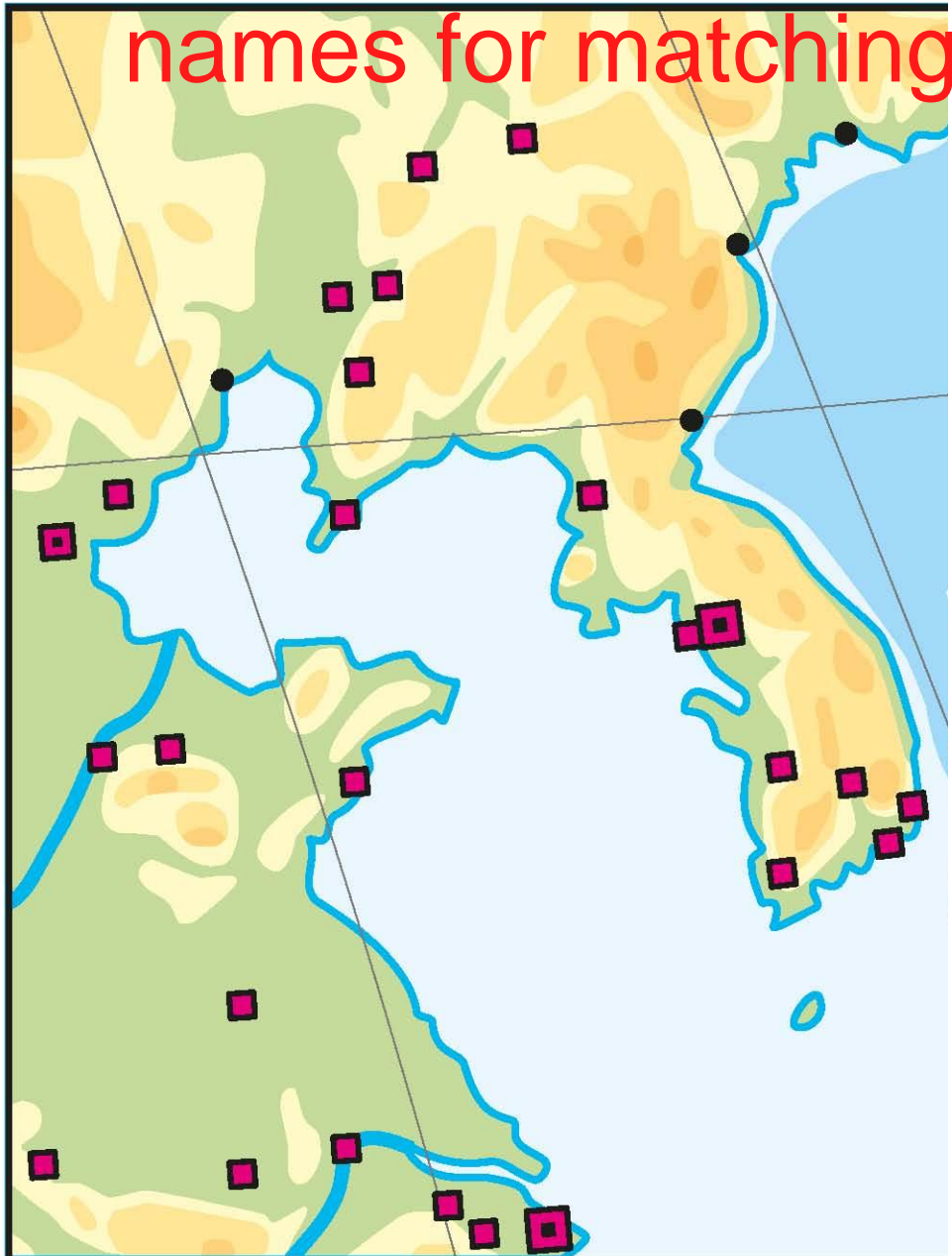
Matching geographical data





Menno Bolder, Groningen (NL)

The necessity of having geographical names for matching geographical data

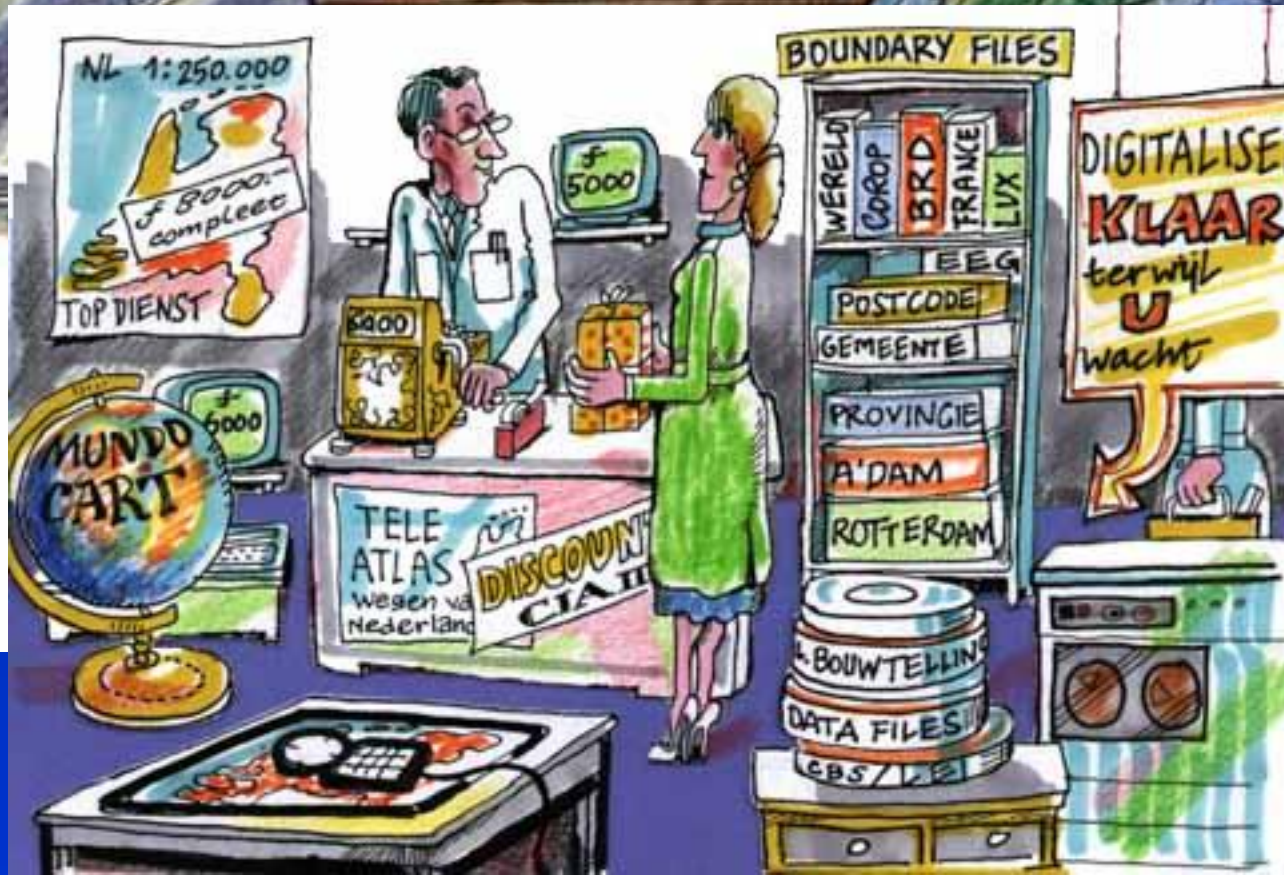


The primary access to spatial information is via geographical names

- They are core reference data components (Inspire)
→ but (in general) still neglected
- They are geographic identifiers used for indirect spatial referencing (ISO 19112)
→ but there is no standardization organisation with power behind it
- They have to be integrated into national spatial data infrastructures (United Nations, Resolution VIII/6, 2002)
→ are (in general) not yet fully integrated into national spatial data infrastructures

Geographical names bureau

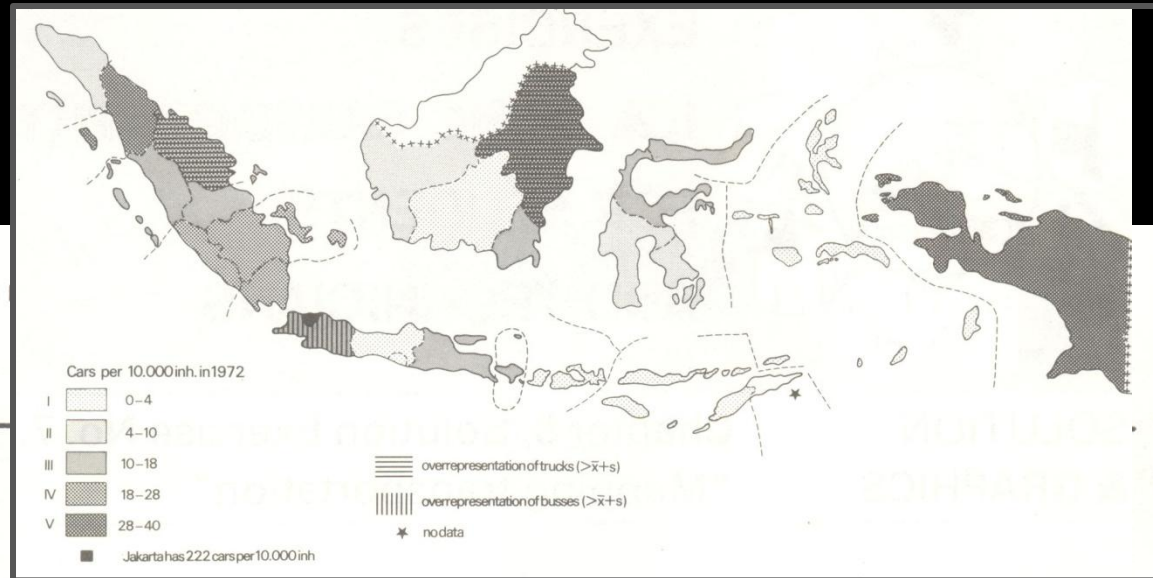
You are lost and want to find your way?



Maps and statistics

Rate per 10,000 population of motor vehicles on

Province



Province	Cars per 10,000 inh.	Trucks per 10,000 inh.	Busses per 10,000 inh.	Other 1	Other 2
1 D.I. Aceh					
2 Sumatera Utara					
3 Sumatera Barat					
4 Riau					
5 Jambi	11,56	14,61	3,73	28,07	57,97
6,7,8. Sumatera Selatan, Bengkulu & Lampung	18,26	16,66	5,99	24,48	65,39
10 D.K.I. Jakarta	221,75	53,47	14,32	328,59	618,13
9 Jawa Barat	15,85	8,17	1,03	30,61	55,66
11,12 Jawa Tengah & D.I. Yogyakarta	3,62	5,16	0,80	36,61	52,19
13 Jawa Timur	17,67	8,90	0,94	47,46	74,97
14 Bali	12,78	12,53	4,45	41,13	70,89
15 Nusa Tenggara Barat	3,70	4,44	0,96	8,47	17,57
16,17 Nusu Tenggara Timur & Timor Timur	3,05	3,53	0,04	7,96	14,58
18 Kalimantan Barat	5,64	3,74	0,94	28,56	38,88
19 Kalimantan Tengah	1,83	1,28	0,03	13,83	16,97
20 Kalimantan Timur	37,20	34,61	2,11	74,12	148,04
23,24 Sulawesi Utara & Sulawesi Tengah	10,35	7,99	1,76	26,92	47,02
22,25 Sulawesi Selatan & S. Tenggara	7,00	8,64	1,08	40,70	57,42
26 Maluku	2,90	7,73	0,61	9,54	20,78
27 Irian Jaya	33,24	14,11	1,13	35,21	83,69
Indonesia	22,79	10,79	2,18	50,59	86,35

(Geo)parsing

Most of our resources have some form of spatial reference e.g. placename, county name, postcode, etc

'Geoparser's have been developed that will assist in the semi-automatic indexing of these resources by using the gazetteer as reference.

This classic gazetteer functionality: find where objects with specific names are located, is translated here as: find all documents referring to this specific spatial object. This can be extended and turned into a more advanced functionality: find all places near a given spatial location.

More specifically, find places of a given type near a given spatial location. And even more specifically and possibly more useful in many circumstances:

Find the nearest place of a given type to a given spatial location.

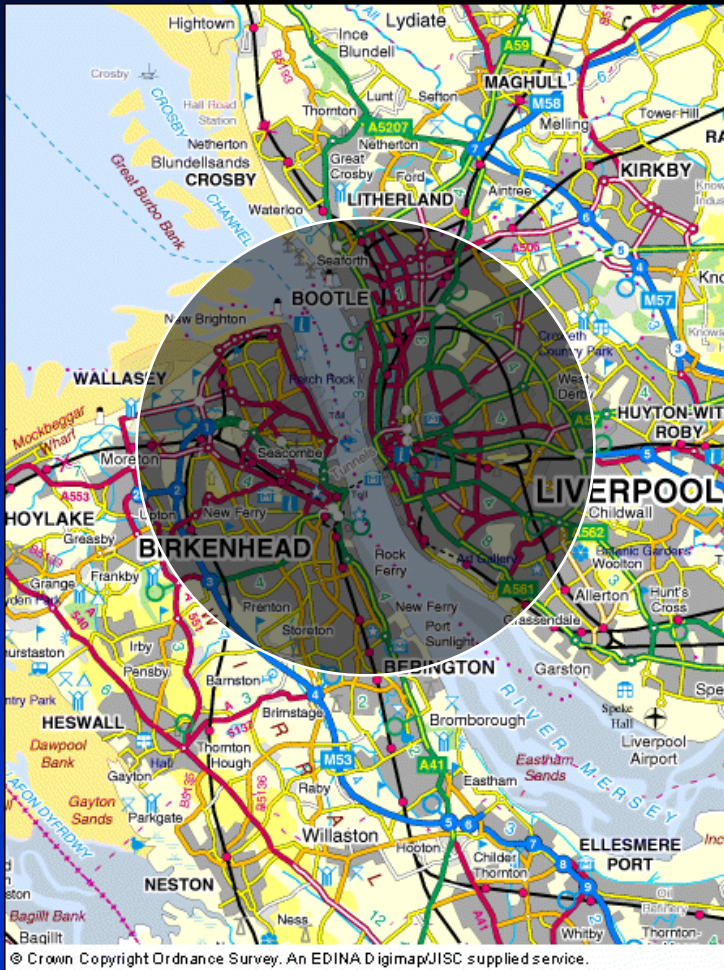
Necessary requirement: gazetteers

Task: Find resource about 'Liverpool docks'

Search using a 'traditional' gazetteer might yield:



co-ordinates allow (near) co-located places to be co-identified.



Using spatial proximity in an active gazetteer, the search can be widened:

<u>Place</u>	<u>County/UA</u>
Liverpool	Liverpool
Bebbington	Wirral
Birkenhead	Wirral
Bootle	Sefton
New Brighton	Wirral
Seacombe	Wirral
Seaforth	Wirral
Waterloo	Sefton

... that means more & better hits ... !!!



(from Edina)



Example: Region admin using boundary data by VAR

BOOKING.COM **BOOKINGS Office** **Region Admin**

You are here: [Home](#) > [Region admin](#) > Cities in region

Cities in region Bas-Rhin (province)

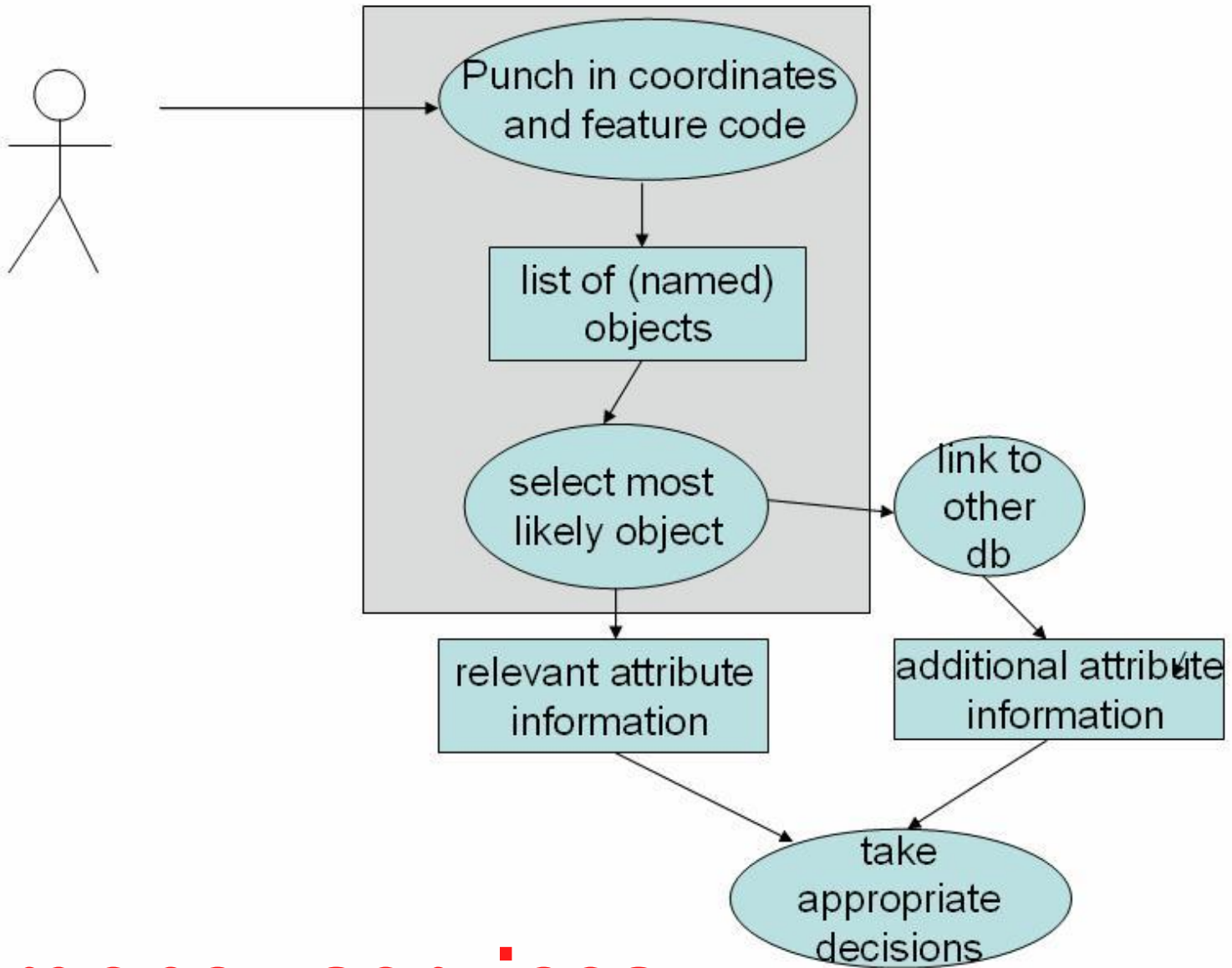
#	city	ufi	hotels	center_distance	distance	remove
1	Andlau-au-Val	-1407594	2	25	0	remove
2	Blaesheim	-1412857	1	10	0	remove
3	Colroy-la-Roche	-1421139	1	36	11	remove
4	Erstein	-1425493	1	19	0	remove
5	Haguenau	-1431299	1	29	4	remove
6	La Petite-Pierre	-1438038	2	35	10	remove
7	Lingolsheim	-1447182	4	9	0	remove
8	Matzenheim	-1450259	1	21	0	remove
9	Molsheim	-1451945	2	8	0	remove
10	Morsbronn-les-Bains	-1453711	1	36	11	remove
11	Obernai	-1455637	1	14	0	remove
12	Ostwald	-1456340	2	12	0	remove
13	Rosheim	-1462667	1	12	0	remove
14	Schiltigheim	-1470024	1	13	0	remove
15	Schirmeck	-1470025	1	28	3	remove
16	Strasbourg	-1471697	35	13	0	remove
17	Wangenbourg	-1478021	1	18	0	remove
18	Wissembourg	-1478168	2	56	31	remove
Total			60			

Region properties	
center longitude	7.56
center latitude	48.59
radius	25 km



Geographic objects of interest, looked for by for instance tourists:

- **Populated places:** cities / villages / municipalities etc.
- **Regions:**
 - ◆ Administrative regions (provincie, departement, canton etc.)
 - ◆ Free regions:
 - ★ Lakes (Lago Maggiore)
 - ★ Rivers (Mosel)
 - ★ Islands (Cyclades)
 - ★ Coastal areas (Côte d'Azur)
 - ★ Mountains (Erzgebirge)



Emergency services

GIS operations

- Querying, buffer and overlay operations on the basis of named objects are possible on the basis of place name standardization