

26 August y 2002

Original: English

Eighth United Nations Conference on the
Standardization of Geographical Names
Berlin, 27 August-5 September.2002
Item 13 of the provisional agenda*

TOPOPNYMIC WEB SITES

Korea Toponymic Web Sites

(Submitted by Republic of Korea)**

*E/CONF.94/1

** Prepared by Young Hwan Kim, Director, National Geographic Institute

~~0135745~~ (E) 290501

0135745

02- 53560 B

Korea Toponymic Web Sites

www.ngi.go.kr/eng/

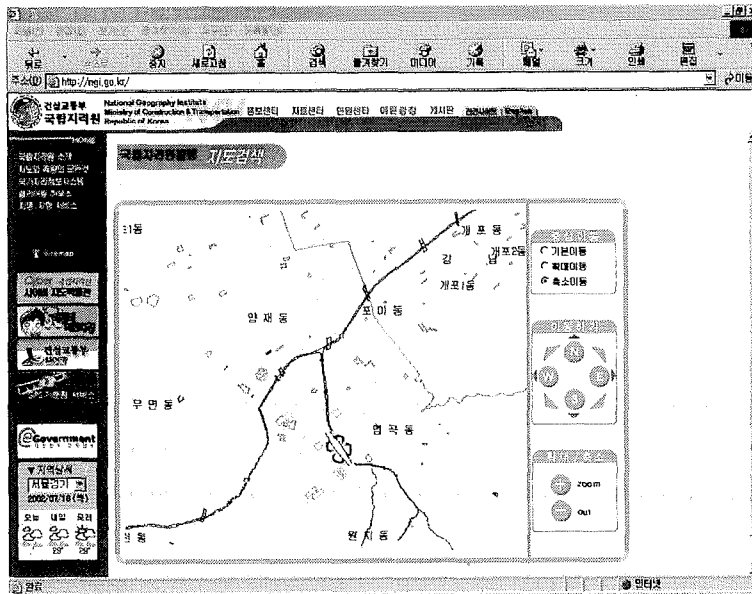
Summary

The National Geography Institute provides a web-based service with the database containing 100,000 geographical names including natural ones marked on 1/25,000 reduced-scale topographical maps on its homepage (www.ngi.go.kr/ngi/kimyung/jum1.asp and 4 others). The contents include locations of provincial government offices, geographical names of those marked on maps, those called by local residents and their origins etc.

One of the most outstanding characteristics of the geographical names thus re-arranged is that a click on a geographical name links a user with the relevant map connected with the digital map provided by the Institute for maximized effect. Currently, the service is provided only in Korean.

U Geographical Names in Administrative Units (www.ngi.go.kr/ngi/jimyung/jum1.asp)

An input of the name of an administrative unit (e.g. *eup*, *myeon* and *dong*) links a user with the relevant geographical name and information on the dates on which the name was publicly announced. With the selection of one of the geographical names, a user can find its relevant map.



Searches [by geographical name
 (www.ngi.go.kr/ngi/jimyung/jum2222.asp), digital map
 (www.ngi.go.kr/ngi/jimyung/jum2.asp), date of public announcement
 (www.ngi.go.kr/ngi/jimyung/jum3.asp), region
 (www.ngi.go.kr/ngi/jimyung/jum5.asp) can be done by selecting a relevant
 window as in a search for a geographical name by administrative unit.
 Relevant statistics can be found in the geographical statistics
 (www.ngi.go.kr/jimyung/jimyungrpt.htm) provided annually by local
 autonomous bodies.

The following shows the contents appearing in response to a click
 on a geographical name. They include the numbers, kinds, locations,
 digital maps, relevant Chinese characters for the geographical names
 made, adjusted and publicly announced by each geographical names
 committee, together with the dates of such public announcements, their
 markings in the English alphabet and brief information on their origins.

