



Economic and Social Council

Distr.  
LIMITED

E/CONF.90/L.4  
8 April 1997

ORIGINAL: ENGLISH

---

SIXTH UNITED NATIONS REGIONAL  
CARTOGRAPHIC CONFERENCE FOR  
THE AMERICAS  
New York, 2-6 June 1997  
Item 5 (b) of the provisional agenda\*

REVIEW OF THE LATEST TECHNOLOGY IN CARTOGRAPHIC DATA ACQUISITION,  
MANIPULATION, STORAGE AND PRESENTATION, WITH SPECIAL EMPHASIS ON  
POTENTIAL APPLICATIONS IN DEVELOPING COUNTRIES: GEOGRAPHIC  
INFORMATION SYSTEMS: DEFINITION, FORMATION AND APPLICATION

MapSite - a WWW service for browsing topographic maps of Finland

Paper submitted by Finland

---

\* E/CONF.90/L.

97-09308 (E) 240497 280497



/...

## MapSite – a WWW service for browsing topographic maps of Finland

National Land Survey of Finland

### General

*MapSite is a WWW-service available to all internet users. MapSite allows the user to freely browse map material 24 hours a day, seven days a week from any computer linked to the internet. There is also a Professional's MapSite, an extra service, which is subject to charge and targeted at professional users. This provides extremely accurate and upto-date topographic maps of Finland. In addition, there is a database of 28,000 place names which can be used free of charge by all users.*

### Technical setup

In order to use the service, the user needs a computer linked to the Internet with an HTML 2.0-compatible web browser (e.g. Netscape 2.0 or more recent). The user must also be registered as a MapSite user.

The user contacts the MapSite web server (<http://www.kartta.nls.fi>) with the browser (Figure 1). The user is identified by a user ID and a password. After this, the user receives an HTML page, which is a MapSite user interface (Figure 2). Apart from the web server, all applications are developed by the National Land Survey of Finland.

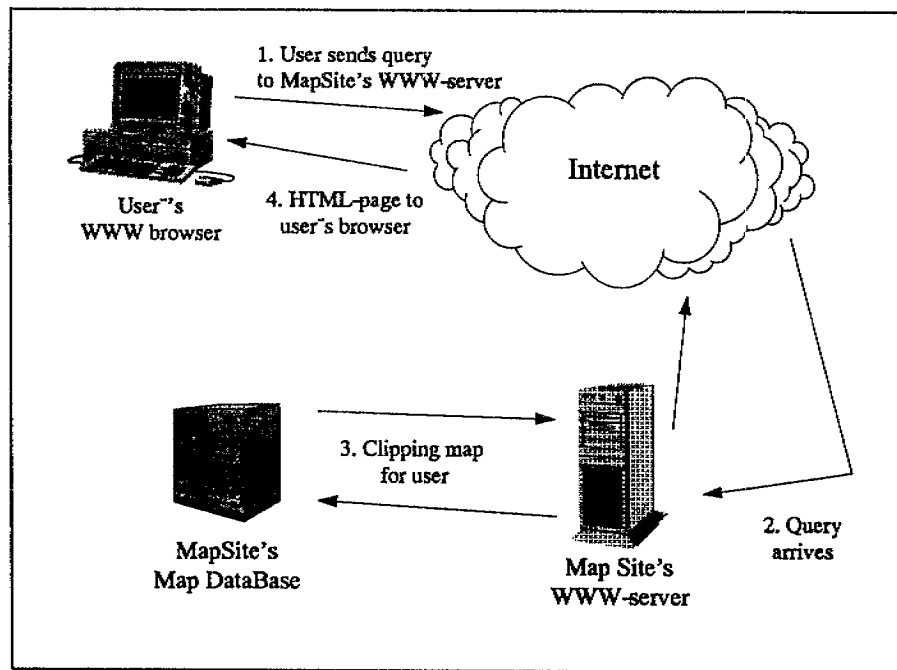


Figure 1: Map Site

### User interface

The MapSite user interface consists of the map window and a control panel (Figure 2).

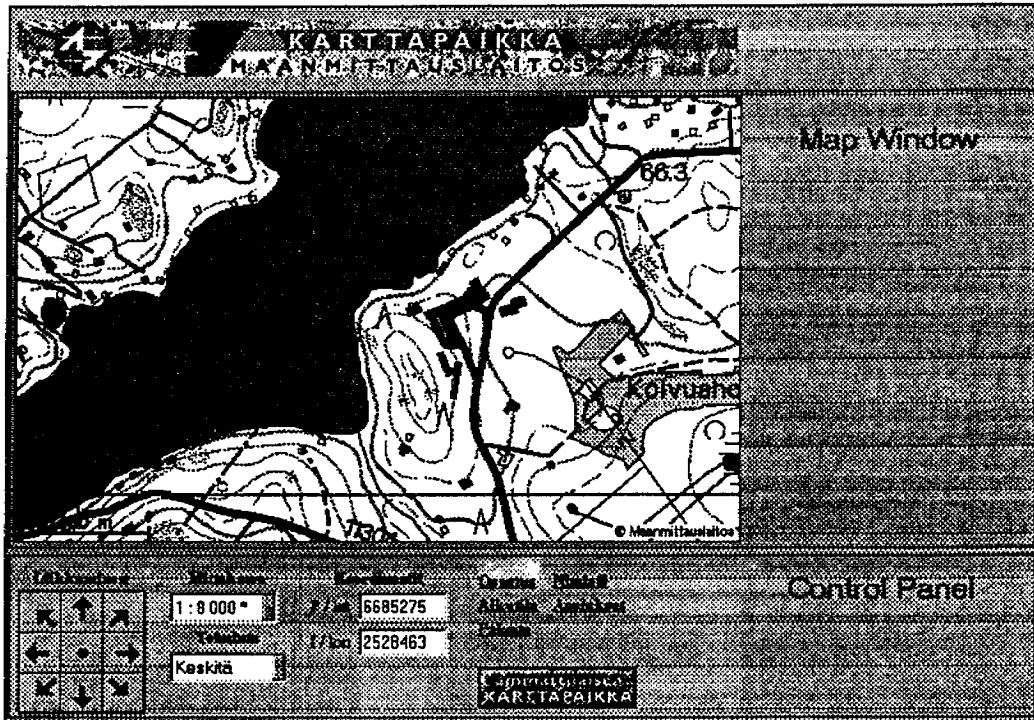


Figure 2: Map Site's GUI

The map window displays the desired map in GIF, PPM or PNG format. By using the functions in the control panel, the user may obtain a map of the desired place and scale. It is also possible to search by coordinates. MapSite contains a database of 28 000 names. It is based on the National Land Survey's smallscale datasets and is consistently updated. There is a separate search function designed for searching by place name (Figure 3).



Figure 3: Searching name "Turku"

The user may receive the result of the search either directly on the MapSite user interface, or, if there are several names found, as a separate web page (Figure 4).



Figure 4: MapSite's search result

### Customizing the user interface

The user can customize the user interface to suit his or her individual needs. For instance, the size of the map window, the image format, the position of the control panel and the color palette can all be edited. The features edited by each user are saved and remain valid for that user until edited again.

### Map datasets

The mapdatasets in MapSite are mainly from the National Land Survey. The small-scale map datasets make use of generally available map material.

Scale of display	Source dataset	Other
1: 1 billion - 1: 8 mill.	Datasets from the Internet	
1: 2.5 mill.	General Map 1 : 1 000 000	
1: 800 000	General Map 1 : 1 000 000	
1: 400 000	Map database 1 : 500 000	
1: 200 000	Map database 1 : 500 000	
1: 200 000	Map database 1 : 250 000	subject to a charge
1: 100 000	Map database 1 : 250 000	subject to a charge
1: 50 000	Topographic Map 1 : 20 000	
1: 20 000	Topographic Map 1 : 20 000	
1: 8 000	Topographic Map 1 : 20 000	subject to a charge
1: 4 000	Topographic Map 1 : 20 000	subject to a charge
1: 2 000	Topographic Map 1 : 20 000	subject to a charge
1: 1 000	Topographic Map 1 : 20 000	subject to a charge

### Usage so far

MapSite was in trial use during summer 1996. There were 600 test users, who made 95,000 searches during a period of three months. MapSite was then officially introduced on September 1996. In order to register as a user, a Finnish Internet address(\*.fi) and e-mail address are required. There are currently 17,500 registered MapSite users, who have made over 650,000 searches in total (by February 1997).

The professional's MapSite, which is subjected to charge, was introduced on January 1997. The charges are low, and so even non-professionals interested in maps can join the service: 100 searches of datasets/services subject to charge will cost FIM 180 (approx. USD 36).

### Further information

WWW <http://www.kartta.nls.fi/>  
E-mail [mapsite@nls.fi](mailto:mapsite@nls.fi)  
Mail MapSite/Karttapaikka  
National Land Survey of Finland  
P.O. BOX 84  
FIN-00521 HELSINKI  
FINLAND  
Fax +358 205 41 5595