

**Ninth United Nations Conference on the  
Standardization of Geographical Names**

New York, 21 - 30 August 2007

Item 12(d) of the provisional agenda\*

**Toponymic data files: Automated data-processing systems**

**Geographical Names on Topographic Map**

Submitted by Lebanon \*\*

---

\* E/CONF.98/1.

\*\* Prepared by Lt Colonel Eng. Joseph Nassar, Chef of Cartographic section at the Directorate of Geographic Affairs, Beirut, Lebanon.



# Geographical Names on Topographic Map

***Presented by Lt Colonel Eng.  
Joseph Nassar***

**Chef of Cartographic section at the  
Directorate of Geographic Affairs.  
Beirut-Lebanon.**

***Tel 00961 5551403 – Fax 00961 5556179  
Email [dagarmy@idm.net.lb](mailto:dagarmy@idm.net.lb).***



# Keyboard

Changing some keys in the keyboard to display  
The transliteration alphabet



**a' = ALT + 1**  
**A' = ALT + 2**



OBJECT ID	CAZA NAME	caza roman
1	SOUR	Ṣūr
2	BENT JBEIL	Bint Jubayl
3	SAIDA	Saydā
4	NABATIYEH	An Nabatyyah
5	MARJYOUN	Marj ʿyūn
6	HASBAIYA	Haṣbayyā
7	JIZZINE	Jizzīn
8	ECH CHOUF	Ash Shūf
9	AALEY	ʿĀlayh
10	BEQAA EL GHARBI	Al Biqā ʿ Al Gharbī
11	RACHAIYA	Rashayyā
12	ZAHLE	Zahlah
13	BAABDA	Ba ʿabdā
14	METN	Al Matn
15	KESROUANE	Kisrwān
16	JBEIL	Jubayl
17	BATROUN	Al Batrūn
18	KOURA	Kūrah
19	BCHARRE	bsharri
20	ZGHARTA	Zghartā
21	EL MINIE ED DANNIYE	Minyah Dinniyyah
22	AAKAR	ʿAkkār
23	BAALBECK	Ba ʿlabak
24	HERMEL	Hirmil
25	TRABLOUS	Tarāblus
26	BEYROUTH	Bayrūt

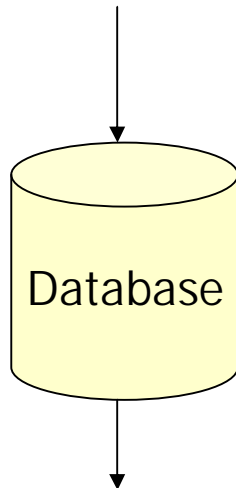
Writing sample from Lebanese Caza.

OBJECTID	CAZA NAME	caza roman
1	SOUR	Ṣūr
2	BENT JBEIL	Bint Jubayl
3	SAIDA	Saydā



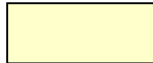


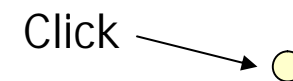
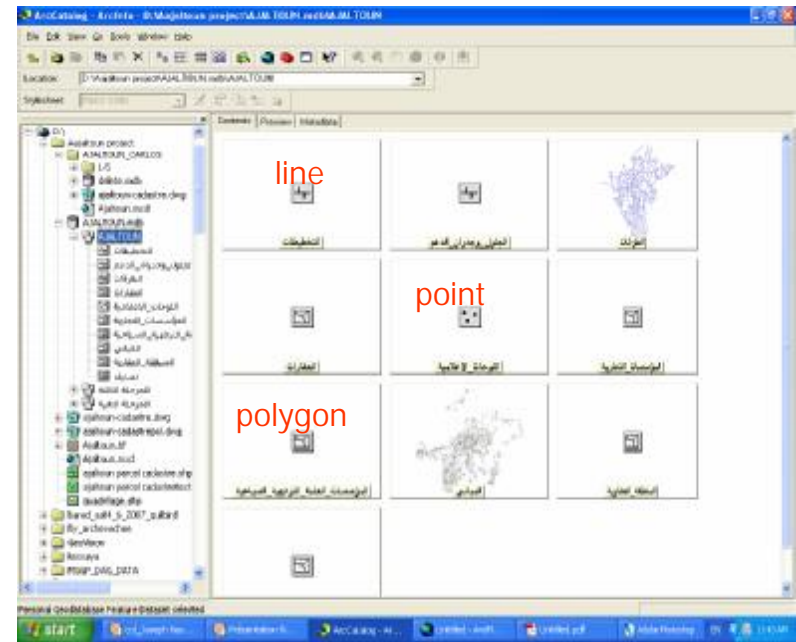
# Creating a database

From ArcCatalog we create a database



In the Database we can create all feature classes With different types:

- point 
- line 
- Polygon 





# Adding fields

Roman field

English field

The screenshot shows the ArcCatalog interface with a table view. The table has two columns: 'name\_roman' and 'NAME'. The data rows are as follows:

name_roman	NAME
Jabal Lubnān	JABAL LOUBNANE
Bayrūt	BEYROUTH
Al Janūb	EJ JENOUB
An Nabaṭiyyah	EN NABATIYE
Al Biqāʿ	EL BEQAA
Baʿ Labak Al Hirmil	BAALBECK EL HERMEL
Ash Shimāl	ECH CHIMAL
ʿAkkār	AAKAR





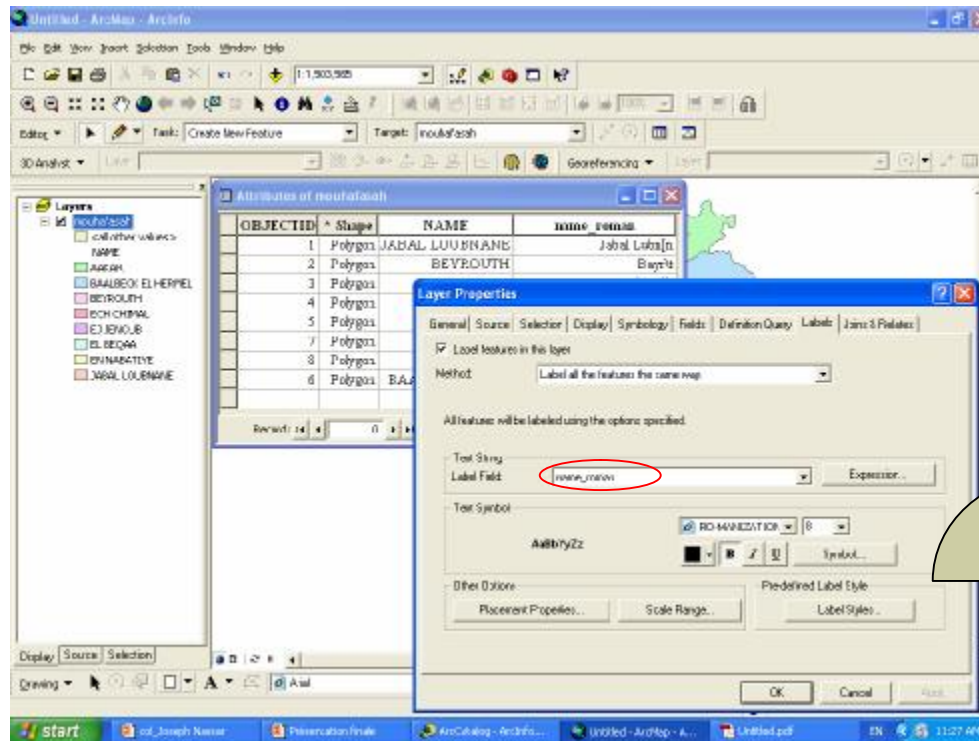
# Choose font and enter data

Add the names of features in the field choosing the right font

English for English text

Arabic for Arabic text

Ro-manization for Roman text





# Writing with the new system

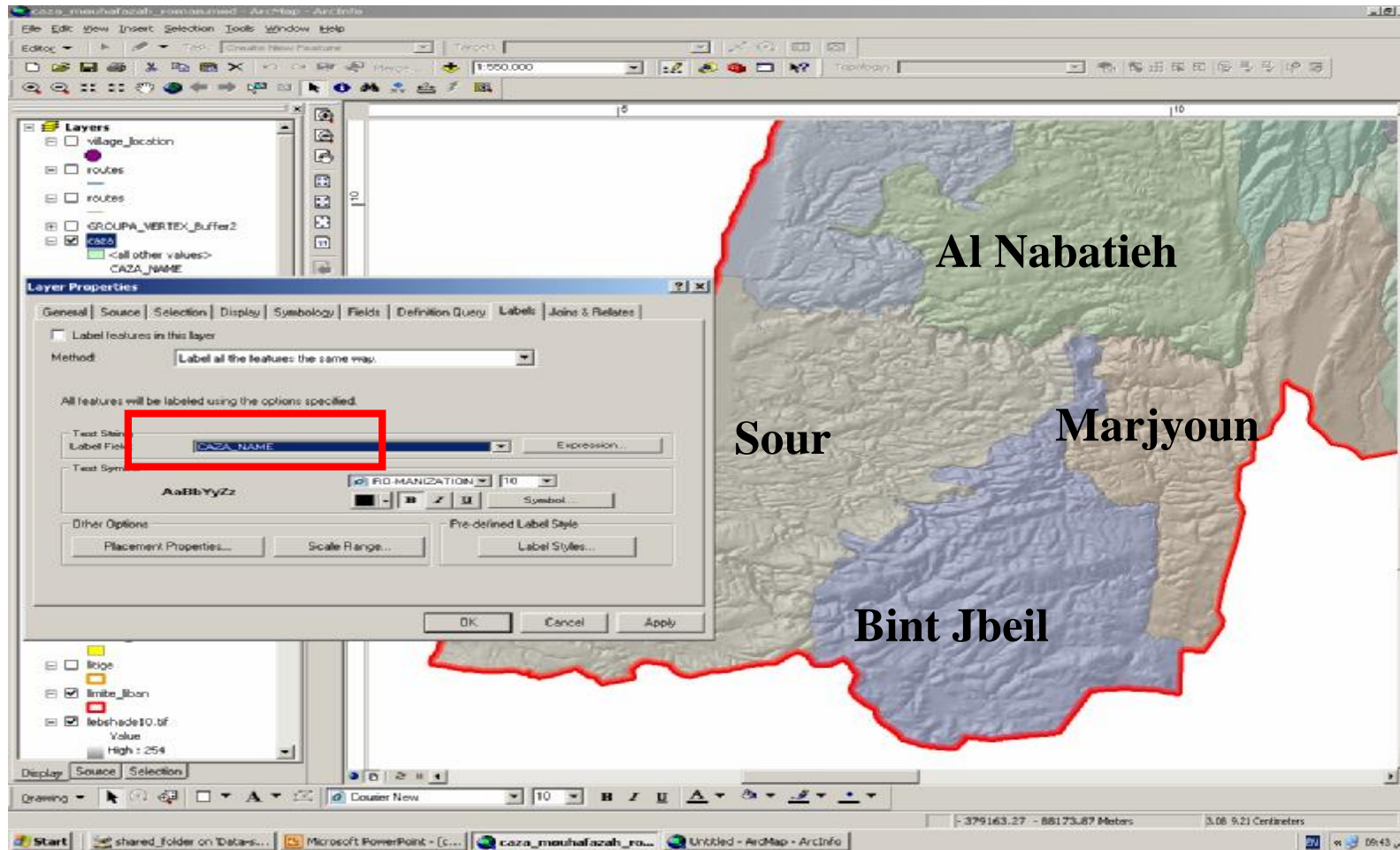
OBJEC	CAZA_NAME	caza_roman
1	SOUR	Sūr
2	BENT_JBEIL	Bint Jubayl
3	SAIDA	Saydā
4	NABATIYEH	An Nabatyyah
5	MARJYOUN	Marj'yūn
6	HASBAIYA	Hasbāyyā
7	JIZZINE	Jizzin
8	ECH CHOUF	Ash Shūf
9	AALEY	'Alayh
10	BEQAA EL GHARBI	Al Biqā' Al Gharbī
11	RACHAIYA	Rashayyā
12	ZAHLE	Zahlāh
13	BAABDA	Ba'abda
14	METN	Al Matn
15	KESROUANE	Kisrūān
16	JBEIL	Jubayl
17	BATROUN	Al Babrūn
18	KOURA	Kūrah
19	BCHARRE	bsharī
20	ZGHARTA	Zghartā
21	EL MINIE ED DANNIYE	Minyah Dinniyah
22	AAKAR	'Akkār
23	BAALBECK	Ba'labak
24	HERMEL	Hirmil
25	TRABLOUS	Tarāblus
26	BEYROUTH	Bayrūt

Add new Romanization Fonts to be able to read, write, And print features names in the new characters.



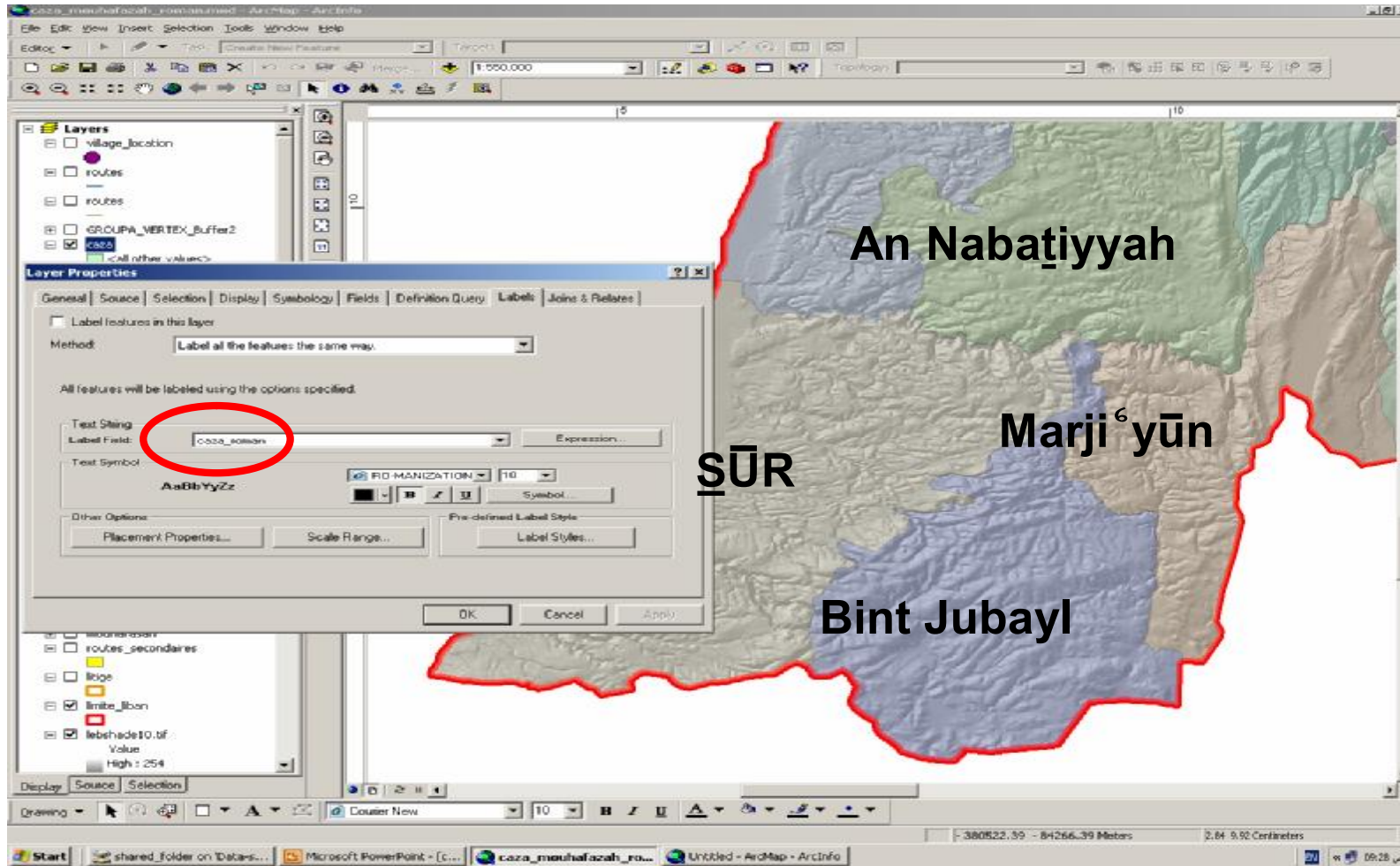


# Method of Switching between two languages



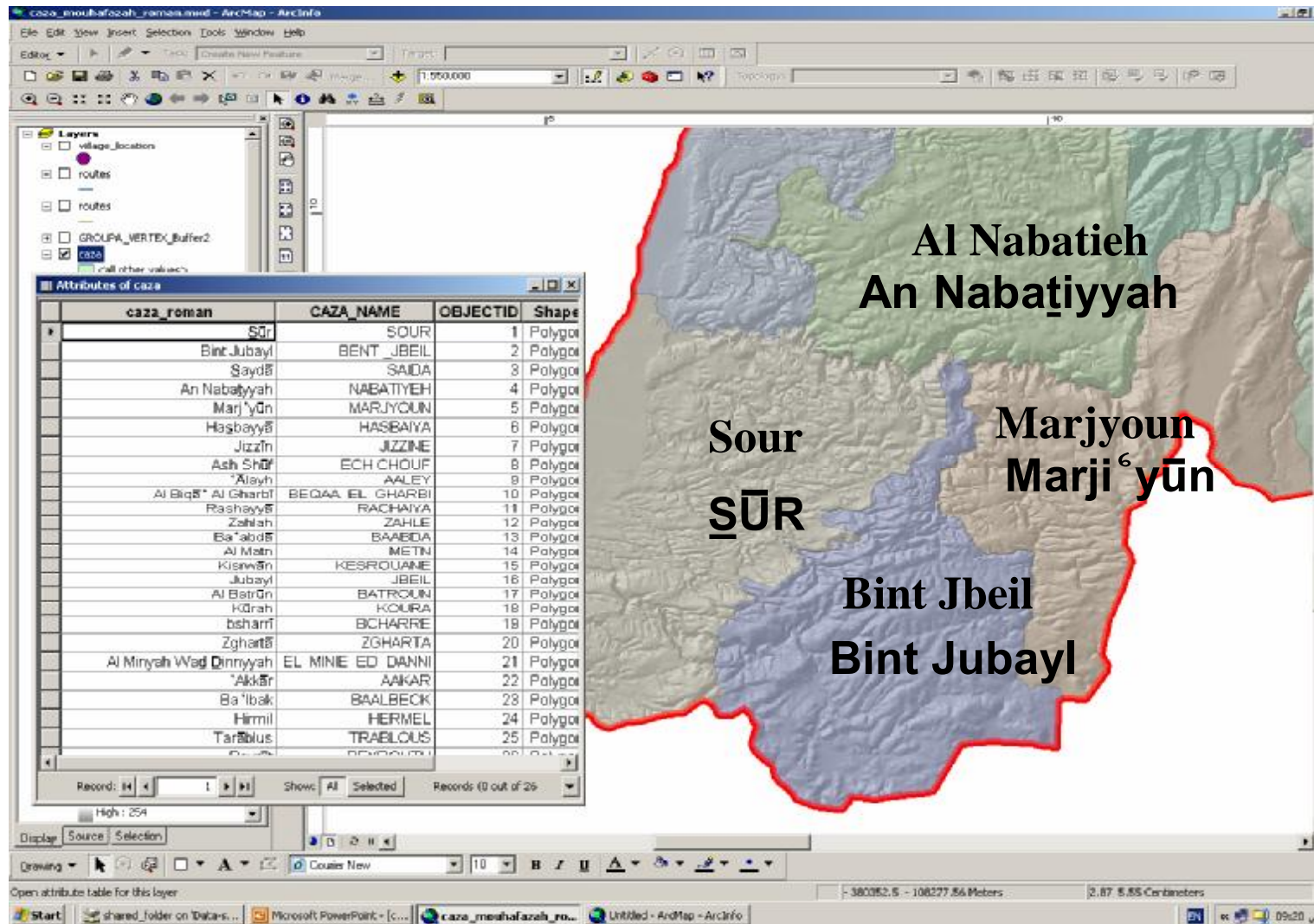


# Showing labels on the map





# Showing two languages at the same time



Thank you