



Key Elements of the Geographical Information System of Mexico



Key Elements of the Geographical Information System of Mexico...

- The creation of the National Statistical and Geographical Information System.
- The autonomy of INEGI.
- The integration of a General Directorate of Geography and environment.
- The synergy between statistical and geographical information.
- The planning scheme.



The creation of the National Statistical and Geographical Information System.



Article 26th of the Mexican Constitution

- Includes the creation of a National Statistical and Geographical Information System which generates data that will be considered official and mandatory for the Federation, States, Federal District and municipalities.



The National Statistical and Geographical Information System

Is integrated by a group of units organized in Subsystems, coordinated by INEGI and operated through the National Information Network.

The objective of the System is to produce and disseminate Information of National Interest.



National Interest Information

•The National Interest Information must satisfy the four following criteria:

A. Refers to the following issues, groups of data or index:				B. Results necessary for the design and evaluation of the public policies.
Population and demographical dynamics	Systems of National Accounts	Atmosphere	International coast limits, state and local limits	
Health	Financial Information	Biodiversity	Continental, insular and underwater relief data	
Education	Prices	Water	Land registry data,	
Employment	Labor	Soil	topographical data, natural resources and climate.	
Income distribution and poverty	Science and technology	Flora	Geographical names	
Public security and justice		Fauna		
Government		Toxic and solid waste		
Housing		Geodesic reference		

C. Generated regularly and periodically.

D. Elaborated through scientifically proved methodology.



Who participates in the System?

- Public administration (federal and state) with competences to develop statistical and geographical activities or have administrative records that allow to obtain information.
- When INEGI generates information it is then considered as an information unit in accordance to the System's Law.



How is the System organized?

- The Board
- National Advisory Council
- National Information Subsystems managed by Executive Committees.
- Specialized Information Committee: thematic, regional, special, permanent or temporary.



Subsystems

The State Units are organized in the following four Subsystems, that are coordinated by the Vice-presidents in their Executive Committees:

- Demographical and Social Statistics.
- Economic Statistics.
- **Geography and Environment.**
- Government, Public Security and Justice Statistics.



Specialized Technical Committees of the Geography and Environment Subsystem

Specialized Technical Committee of Information:

- on Water Field.
- on Atmosphere and Climate Field.
- on Use of Land, and Vegetation and Forest Resources Field.
- on Basic Geographical Information.



The Autonomy of the National Institute of Statistics and Geography (INEGI)



National Institute of Statistics and Geography (INEGI)

In accordance with the above mentioned constitutional article, INEGI is a public agency responsible for regulating and coordinating the National Statistical and Geographical Information System.



Competences

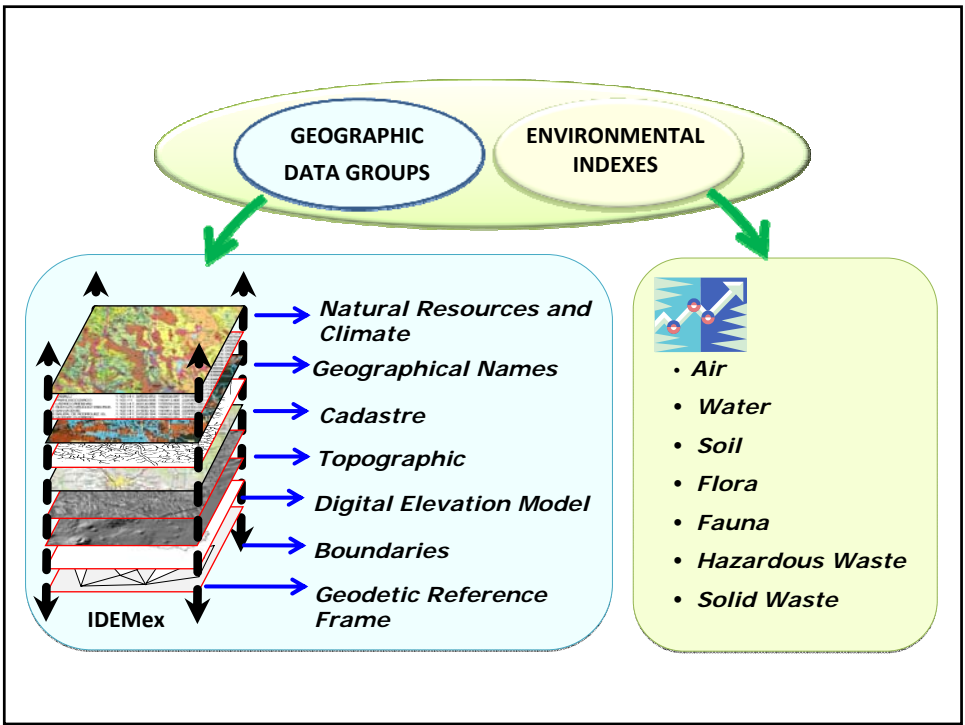
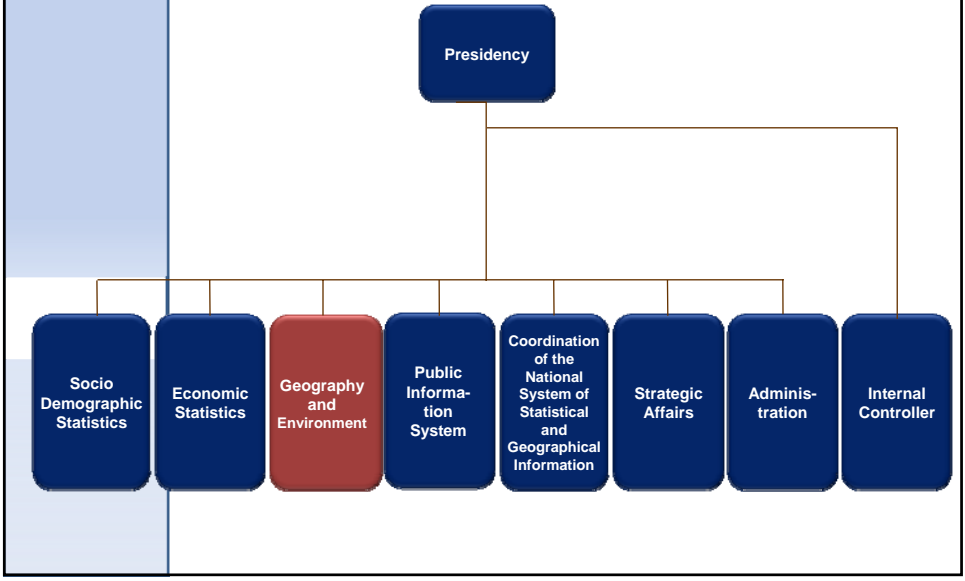
1. Coordinating and regulating the System.
2. Producing National Interest Information.
3. Providing the Public Information Service.



General Directorate of Geography and Environment



How we are organized





The synergy between Statistics and Geography

Link among geographic and statistical data



Geographical data
groups
and environmental
indexes



Economic data



Demographic and
Social data



Geostatistical Framework



Link between geographic and statistical data

Help the identification of routes and control the coverage of the National Censuses and Surveys conducted by INEGI.




Censo 2010




Link between geographic and statistical data

Health and geospatial information link


Identificador	Hospitales generales	Valor
Abstruto		
Clave del municipio o delegación	DELEGACION (02015) CUAUHTEMOC	15
Nombre del municipio		
Clave de la localidad	LDC 1 CUAUHTEMOC	1
Nombre de la localidad		
Área geográfica Básica (AGEB)		1229
Número de manzanas		
Nombre del establecimiento	HOSPITAL GENERAL DE MEXICO	
Calle, avenida, avenida, avenida, avenida	CALLE DOCTOR BALMES	
Número anterior o fun		182
Edificio, para a nivel		
Número o letra y letra		
Cultura, funcionamiento, unidad habitac	COLONIA DOCTORES	
Código postal	0620	
Código de la clase de actividad principal		622112
Origen de la actividad principal	SIEMPRE 622112 HOSPITALES GENERALES DEL SECT	
Corredor industrial, centro comercial, mer		
Número de local		




ESTADÍSTICAS
CENSALES A ESCALAS GEOELECTORALES
II CONTEO DE POBLACIÓN Y VIVIENDA 2005



- **Geospatial Information System** to promote and to make easy use, analysis, integration and interpretation of the electoral national information
- Include geographical and statistical information about districts and electoral sections.
- Geomatic solution contain:
 - II Count of Population and housing 2005 Information (INEGI)
 - Frame of the states, districts and sections electorates (IFE)
 - Topography scale 1:250 000 series III (INEGI)
 - IRIS 4.1 Geospatial information integrated to a system(INEGI)
- Technical support for decision makers.






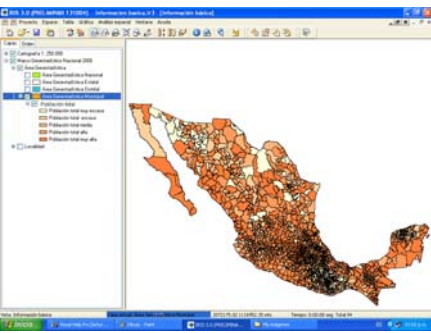
Link between geographic and statistical data

IRIS

Spanish acronym for a referenced geospatial information integrated to a system (**Información Referenciada geoespacialmente Integrada en un Sistema**)



- Development by a group of Mexican technician highly trained
- To promote and easily use, analysis, integration and interpretation of the national information
- Include geographical and statistical information
- Technical support for decision makers.





The Planning Scheme



INEGI's short, medium and long-term programs.

- Strategic Program of the National Statistical and Geographical Information System. (24 years).
- National Statistical and Geographical Program. (6 years).
- Annual Statistical and Geographical Program