



A One-Stop-Shop for progress on SDG 12

SDG 12 HUB

I WOULD LIKE TO...

SEE PROGRESS BY SDG 12 TARGET

SEE PROGRESS BY COUNTRY

REPORT ON SDG 12

EXPLORE ACTION ON SDG 12

SDG 12 HUB

The SDG 12 Hub is a one-stop-shop for governments, businesses, civil society and the public for tracking progress on the achievement of Goal 12 of the 2030 Agenda for Sustainable Development: ensuring sustainable consumption and production patterns.

EXPLORE SDG 12 TARGETS BY THEME

- ALL
- BEHAVIOR
- BUSINESS
- FOOD
- POLICIES
- RESOURCE USE
- WASTE

SCP POLICIES

RESOURCE USE

FOOD LOSS & WASTE



A One-Stop-Shop for progress on SDG 12



Facilitates reporting processes on SDG 12
(as one access point to all of your SDG 12 reporting)



Provides an overview of progress on SCP/SDG 12 across all indicators



Offers all information in one place
(including progress tracking, reporting access, databases, data visualizations, metadata, guidance and support)



Provides direct access to solutions for SCP
(including policies, projects, initiatives and data by linking to existing platforms and communities for practice)



12 RESPONSIBLE CONSUMPTION AND PRODUCTION



A UN inter-agency collaboration

Reports from the UNSG state that SDG 12 is the least resourced of all the goals and only covered in a fragmented way. The subsequent resolution [A/RES/72/279](#) calls on the **UN Development System to inter-alia “promote progress on those Goals lagging behind (...) building on comparative advantages, reducing gaps, overlaps and duplication across entities.”**

- The SDG 12 Hub is a part of a broader collaboration across the UN custodian agencies of SDG 12
- The collaboration is streamlining methodologies, terminology, processes and timelines
- With the aim to effectively track the progress on commitments made by Member States to the 2030 Agenda and make SDG 12 and SCP more accessible to governments





SDG 12 HUB : Beyond Beta

NEW FEATURES

- **“Take Action”**: Capacity building mechanism directly on the SDG 12 Hub by UN Alliance for SDG 12
- **Dynamic narrative reports** across SDG 12 targets for countries and UN Country Teams, to support VNRs, CCAs, NDCs, etc.
- **Improved visualisations** across targets/ indicators

UN ALLIANCE FOR SDG 12 JOINS THE SDG 12 HUB

taking the Hub beyond a data platform, the new Partners include: UNECE, ITC, FAO, UN-HABITAT, UNDP, UNOPS, UNESCO, UNECLAC, PAGE, UNIDO, ILO, UNITAR

HOW CAN WE HELP YOU?

LOREM IPSUM DOLOR SIT AMET, CONSECTEUR ADIPISCI ELIT. CURABTUR AC CONVALLIS ARCTO. NULLA LUCTUS SAGITTIS ERAT. PULLENTEQUE SED NISI ID MI INTERDUM SCIELERIQUE YHERA EGRET PHAUSIT. NULLAM PLACERAT LIBERO VEL SEM ALIQUAM VOLUPTAT.

GET STARTED

STEP 1: WHO ARE YOU?

LOREM IPSUM DOLOR SIT AMET

UN RESIDENT COORDINATORS OFFICE | UN COUNTRY TEAM | GOVERNMENT | OTHER

LOREM IPSUM DOLOR SIT AMET

STEP 2: SYSTEM

LOREM IPSUM DOLOR SIT AMET

FOOD SYSTEMS | BUILT ENVIRONMENT AND SUSTAINABLE INFRASTRUCTURE SYSTEMS | TOURISM | TEXTILES, GARMENT AND FOOTWEAR

ELECTRONICS | OTHER MANUFACTURING INDUSTRIES | EXTRACTIVES | WATER

WASTE | SELECT ALL

PREVIOUS | NEXT

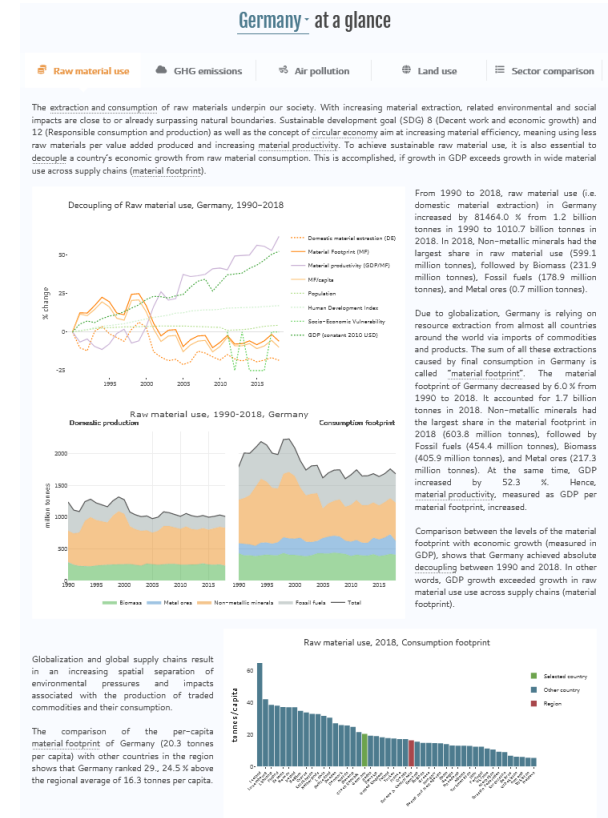
STEP 3: POLICY INTERVENTION STAGES

LOREM IPSUM DOLOR SIT AMET

AGENDA SETTING | FORMULATION | ADOPTION | IMPLEMENTATION AND ADMINISTRATION

EVALUATION | ALL OR MORE POLICY/ INTERVENTION STAGES

PREVIOUS | NEXT





The SDG 12 Hub aims to...

Raise the profile of SDG 12 and Encourage Implementation

- Making SDG 12 accessible and transparent
- Increase understanding of SDG 12/SCP as cross-sectoral / cross-ministerial
- Raise awareness and encourage implementation of SDG 12/SCP and existing platforms, networks and communities of practice

Streamline and Simplify Reporting Processes for Member States

- Accessible and transparent reporting and data
- Inclusion of SDG 12 indicators in national monitoring processes
- Increase reporting rate across the indicators to effectively track progress on SDG 12

Inform Voluntary National Reviews and national policy interventions

- Consolidated view of national action on SCP across ministries and national entities, as well as global and regional data across all SDG 12 indicators
- Toolbox for national policy interventions by linking to existing platforms, networks and communities of practice for inspiration, guidance and support

Visit the SDG 12 Hub at
<https://sdg12hub.org/>

The screenshot shows the SDG 12 Hub website. At the top, there is a navigation bar with the 'ONE PLANET NETWORK' logo on the left and a search icon on the right. Below this is the 'SDG 12 HUB' logo, which includes the United Nations emblem and an infinity symbol. To the right of the logo are four menu items: 'SEE PROGRESS', 'EXPLORE ACTION', 'REPORT', and 'ABOUT'. The main content area features a large background image of a hiker with a backpack. Overlaid on this image is the text 'SDG 12 HUB' and 'I WOULD LIKE TO...'. Below this text are four white buttons with black text: 'SEE PROGRESS BY SDG 12 TARGET', 'SEE PROGRESS BY COUNTRY', 'REPORT ON SDG 12', and 'EXPLORE ACTION ON SDG 12'. Below the main image, there is a section titled 'SDG 12 HUB' with a paragraph of text: 'The SDG 12 Hub is a one-stop-shop for governments, businesses, civil society and the public for tracking progress on the achievement of Goal 12 of the 2030 Agenda for Sustainable Development: ensuring sustainable consumption and production patterns.' Below this is a section titled 'EXPLORE SDG 12 TARGETS BY THEME' with a row of eight filter buttons: 'ALL', 'BEHAVIOR', 'BUSINESS', 'FOOD', 'POLICIES', 'RESOURCE USE', and 'WASTE'. Below the filters are three featured content cards: 'SCP POLICIES' (with a blurred image), 'RESOURCE USE' (with an image of logs), and 'FOOD LOSS & WASTE' (with an image of spoiled food).