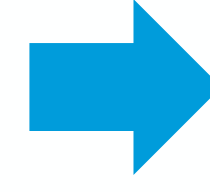
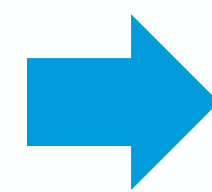


**Updates on  
application of climate  
and gender indicators**

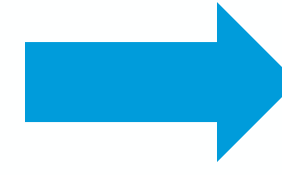
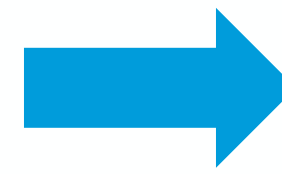
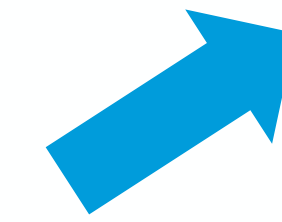
# Development of Gender and Environment Indicators



**100 Indicators**  
Measuring the nexus between gender and environment:  
Leveraging data from population surveys

The following list of indicators was put together to provide a menu of options for countries wishing to measure environmental issues from a gender perspective. The list includes, among others, SDG indicators, Sendai indicators and indicators from the Asia-Pacific set of Gender-Environment Indicators. All the indicators included in this list can be calculated using individual-level population surveys and, in particular, Gender and Environment Survey (GES) items, in line with the [Model Questionnaire on Gender and the Environment](#).

GES Item Code	Indicator Name	Module in Model Questionnaire	General reference area	Core concept since with other indicators	Reference SDG	Level of disaggregation	Additional information
1	(a) Proportion of total agricultural population with ownership or secure rights over agricultural land, by sex; and (b) share of women among owners or rights bearers of agricultural land, by type of tenure	Asset ownership; Household Roster	Natural resource management, conservation and use; Resilience	SDG 5 a, 1, GE2	Agricultural population	Sex and type of tenure	Mean size of land (in hectares)
2	Proportion of population using safely managed drinking water services, by sex	Housing characteristics	Natural resource management, conservation and use; Health	Similar to SDG 6.1.1, GE5	Total population	Sex	Season
3	Proportion of population with access to electricity, by sex	Housing characteristics	Natural resource management, conservation and use; Health	Similar to SDG 7.1.1, GE6	Total population	Sex	Location, type of electricity
4	Proportion of population using (a) safely managed sanitation services and (b) a hand-washing facility with soap and water, by sex	Housing characteristics	Natural resource management, conservation and use; Health	Similar to SDG 6.2.1, GE27	Total population	Sex	Location
5	Proportion of households where women and girls are in charge of water collection, by median time to source	Housing characteristics	Natural resource management, conservation and use; Health	GE11	Households without water in premises	By sex, time to source	Location, mode of transport
6	Proportion of population living in households where sanitation facilities are poorly ventilated, lack a lock, or are shared with other households, by sex	Housing characteristics	Health	No	Population using sanitation facilities outside the household	Sex	Location



# Metadata for Gender-Environment Indicators

Measuring the Nexus Between Gender and Environment  
100 Indicators to Measure the Gender-Environment Nexus: Leveraging Data from Individual-level Population Surveys

## 1. Indicator information (GES 13)

1.a. Indicator name	Proportion of population exposed to hazards in the past 12 months who were able to access and understand early warning information, by sex, location, type of disaster and type of medium
1.b. Indicator number	GES indicator 13
1.c. Reference to the Model Questionnaire on Gender and the Environment	
1.c.a. Module name	Disaster exposure, preparedness and consequences
1.c.b. Data items	Questions 4.1, 4.2, 4.3
1.d. General reference area	Disasters
1.e. Correspondence with other indicators	
1.e.a. SDG indicators	No
1.e.b. Sendai indicator	No
1.e.c. Asia-Pacific set of GE indicators	No
1.f. Data disaggregation	
1.f.a. Reference population	Hazard-exposed population, 18+
1.f.b. Required level of disaggregation	Sex; Location; Type of disaster; Type of medium
1.f.c. Recommended additional disaggregation	Educational attainment; Disability status
1.g. International organization(s) responsible for global monitoring	Not applicable

## 2. Definition and concepts

### 2.a. Definitions and concepts

#### Definitions

This indicator is defined as the total proportion of population exposed to hazards in the past 12 months who were able to access and understand early warning information.  
It is expressed in percentage and disaggregated by sex, location, type of disaster and type of medium.

#### Concepts

“Hazard-exposed population” refers to the adult population (of age 18 years old and above) who personally experienced at least one hazard (see [Hazard Information Profiles](#) for the list of hazards) in the past 12 months.  
A hazard is a process, phenomenon or human activity that may cause loss of life, injury or other health impacts, property damage, social and economic disruption, or environmental degradation. Experiencing a

Metadata available for all 100 indicators

Aligns with international statistical standards, definitions and classifications

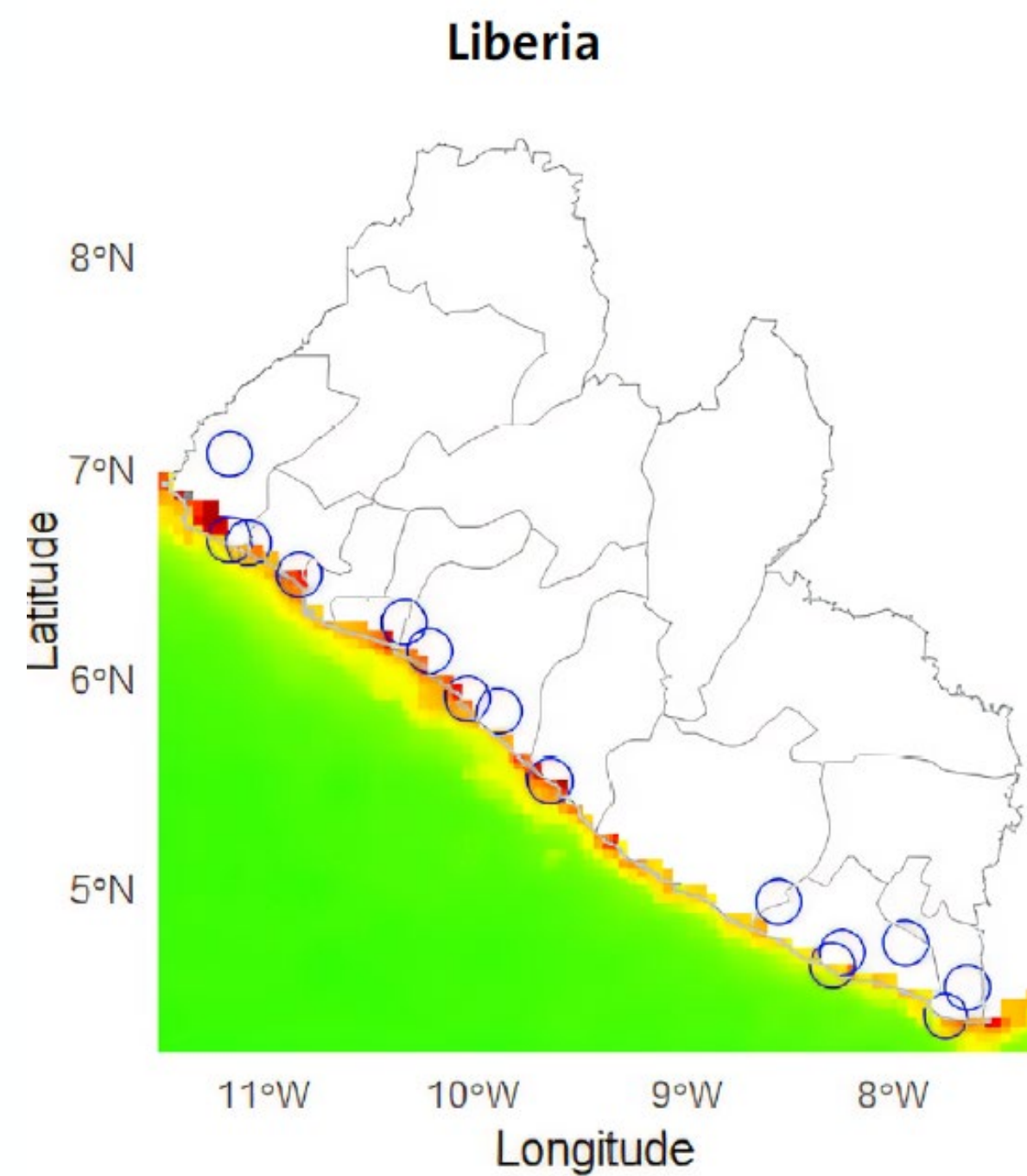
Consulted with experts on different topics, from UN Agencies, national governments, think tanks

# Generating data for 100 Gender-Environment Indicators

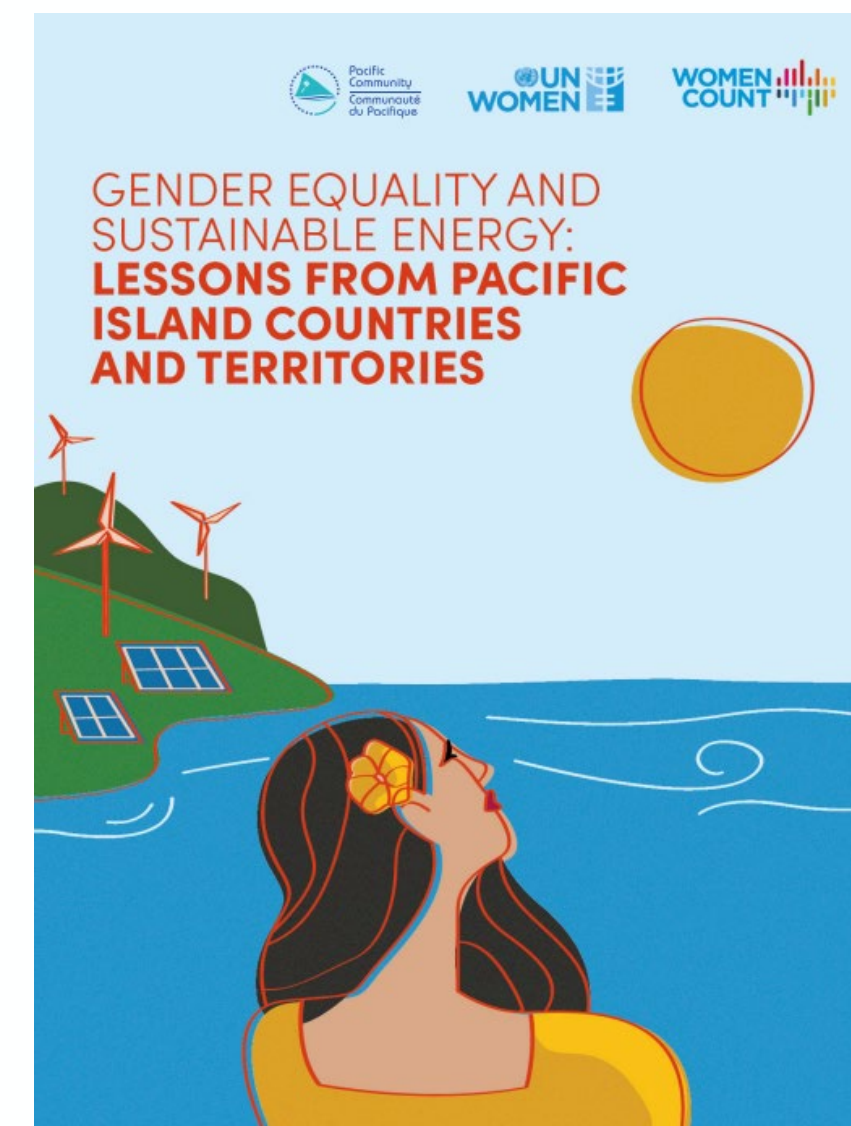
National specialized surveys



GIS-Survey data integration & other forms of big data uses



Admin data



Citizen data



## Collaborative on Citizen Data

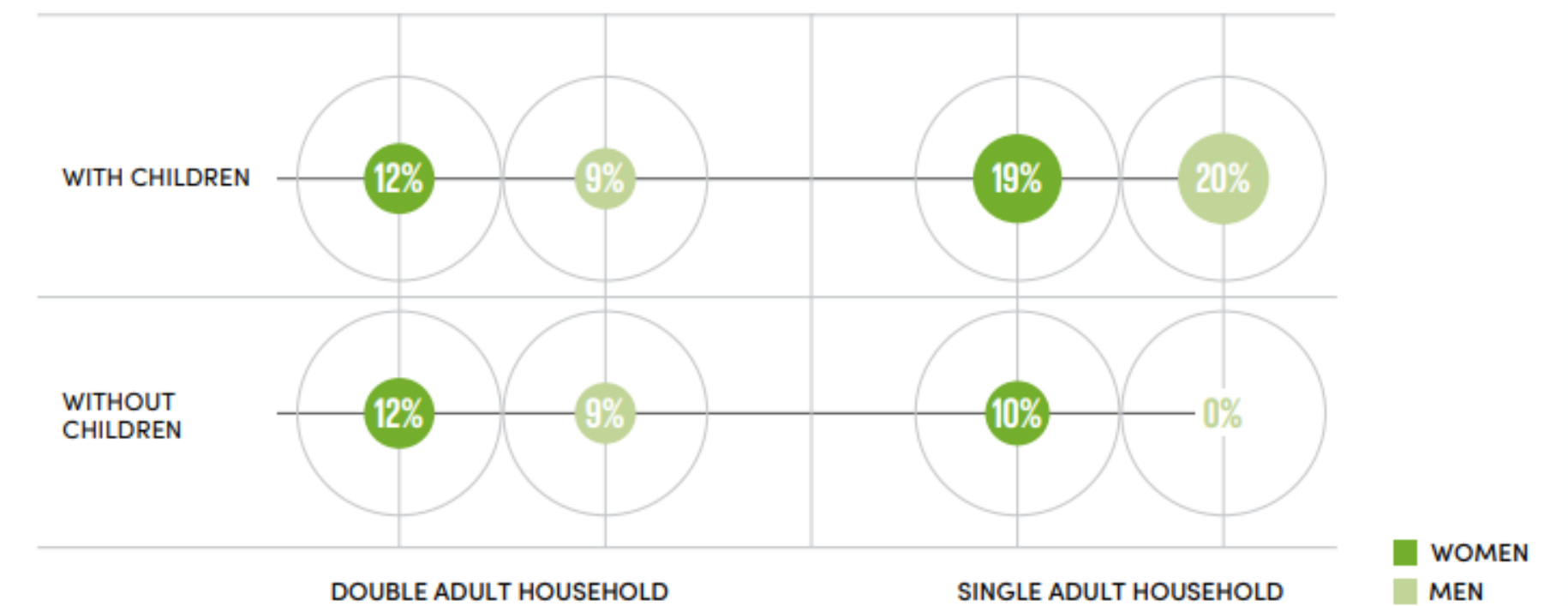
# Examples of indicators generated from Gender Environment Surveys

Module number	Module name	Type of module
Module 1	Household roster	Household
Module 2	Housing characteristics: Location, building materials, fuel, water and sanitation	Household
Module 3	Individual characteristics	Individual
Module 4	Disaster exposure, preparedness and consequences	Individual
Module 5	Exposure to, and preparedness for, climate change related effects	Individual
Module 6	Employment in the green economy	Individual
Module 7	Agriculture and land use	Individual
Module 8	Environment-related livelihoods	Individual
Module 9	Asset ownership	Individual
Module 10	Decision making and mobility	Individual

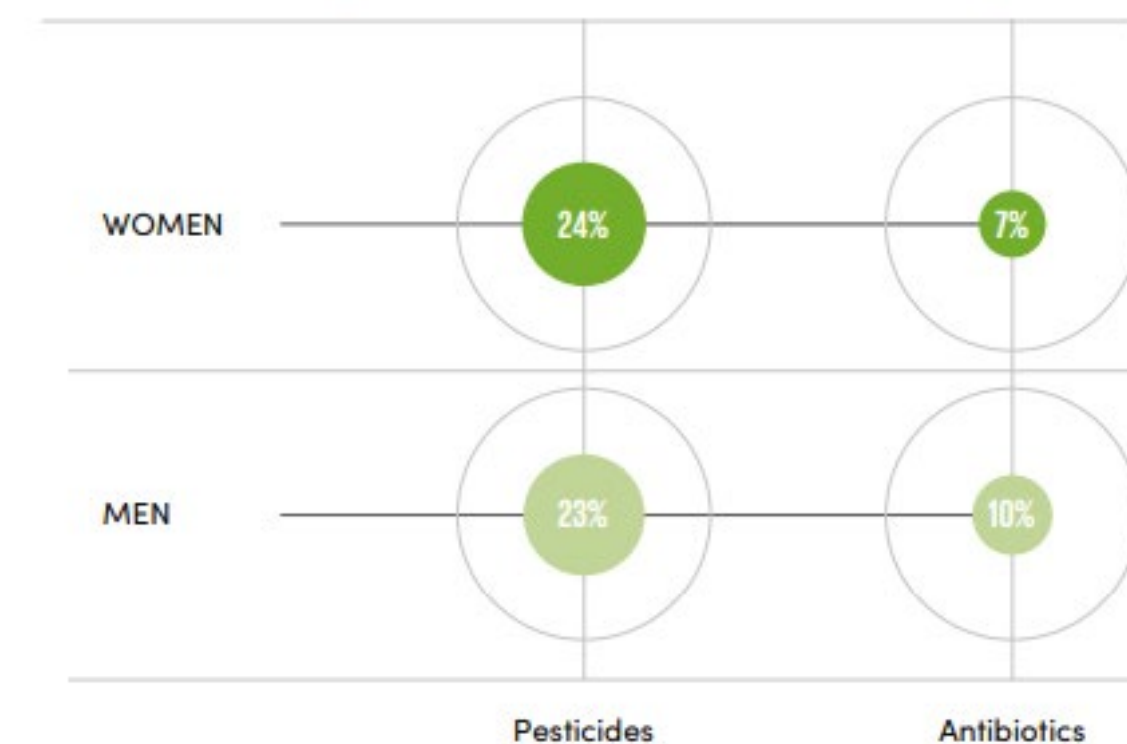
Countries where GES are completed	Countries where GES are on-going or planned
Cambodia	Bangladesh
Kiribati	Fiji
Mongolia	Thailand
Samoa	
Senegal	
Tanzania	
Tonga	



**Figure 20:** Proportion of the population who decreased food intake as a result of climate change, by sex and household composition (percentage)

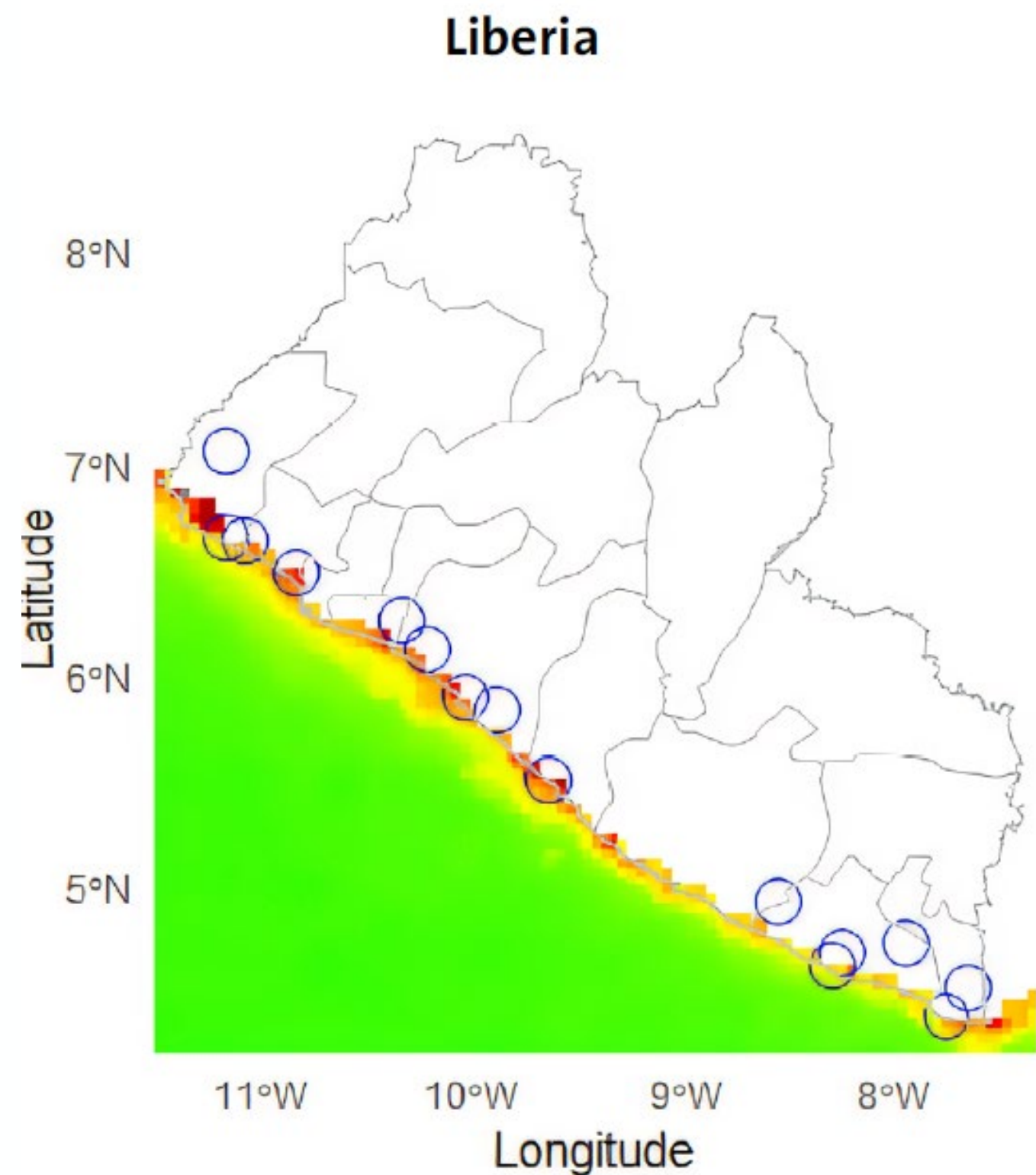


**Figure 27:** Proportion of land or livestock users who attributed their increased use of pesticides or antibiotics to the effects of climate change, by sex and effect (percentage)

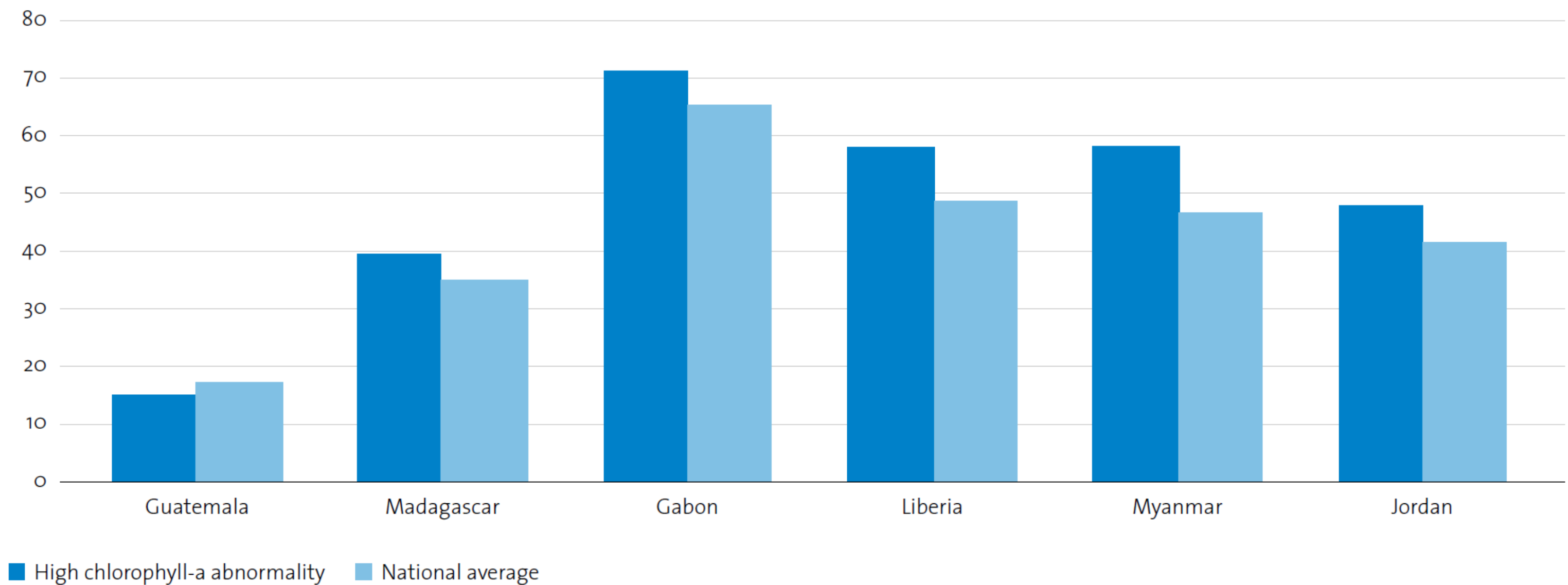


Source: UN Women and NIS, 2025. Gender and environment survey, Kingdom of Cambodia

# Examples of indicators generated from data integration

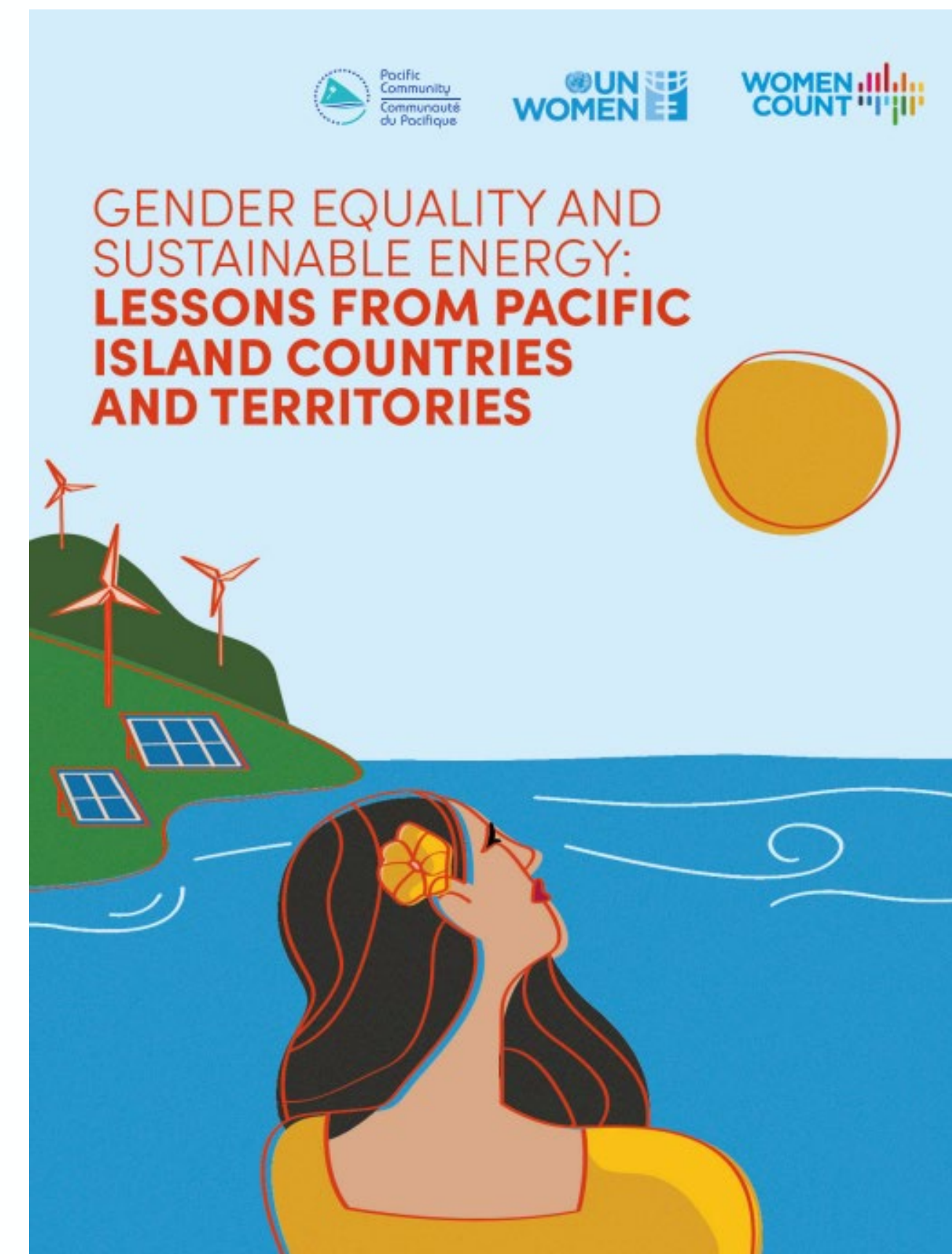
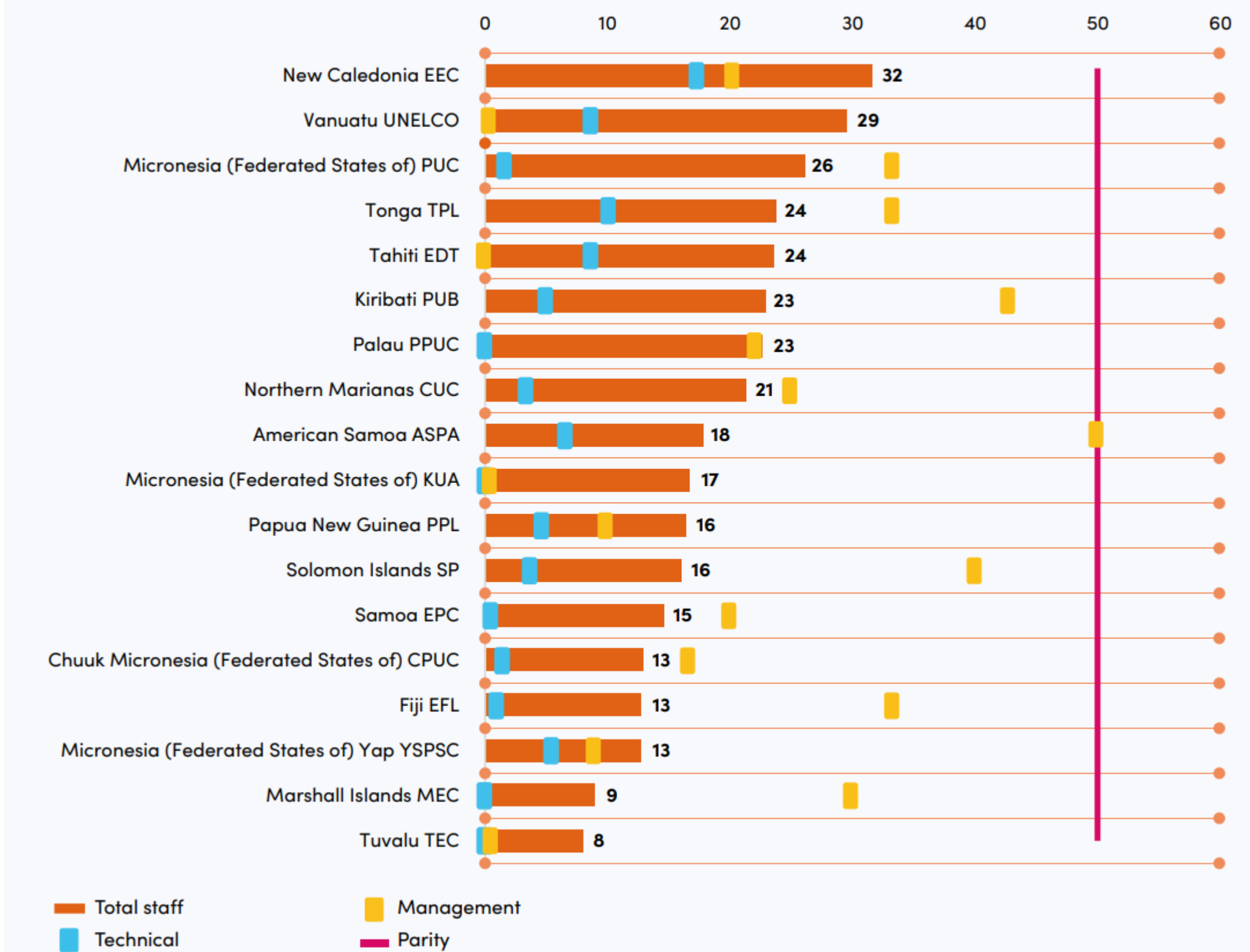


Proportion of women living in the poorest coastal households affected by eutrophication that have anemia, by level of chlorophyll-a abnormality in the area where they live



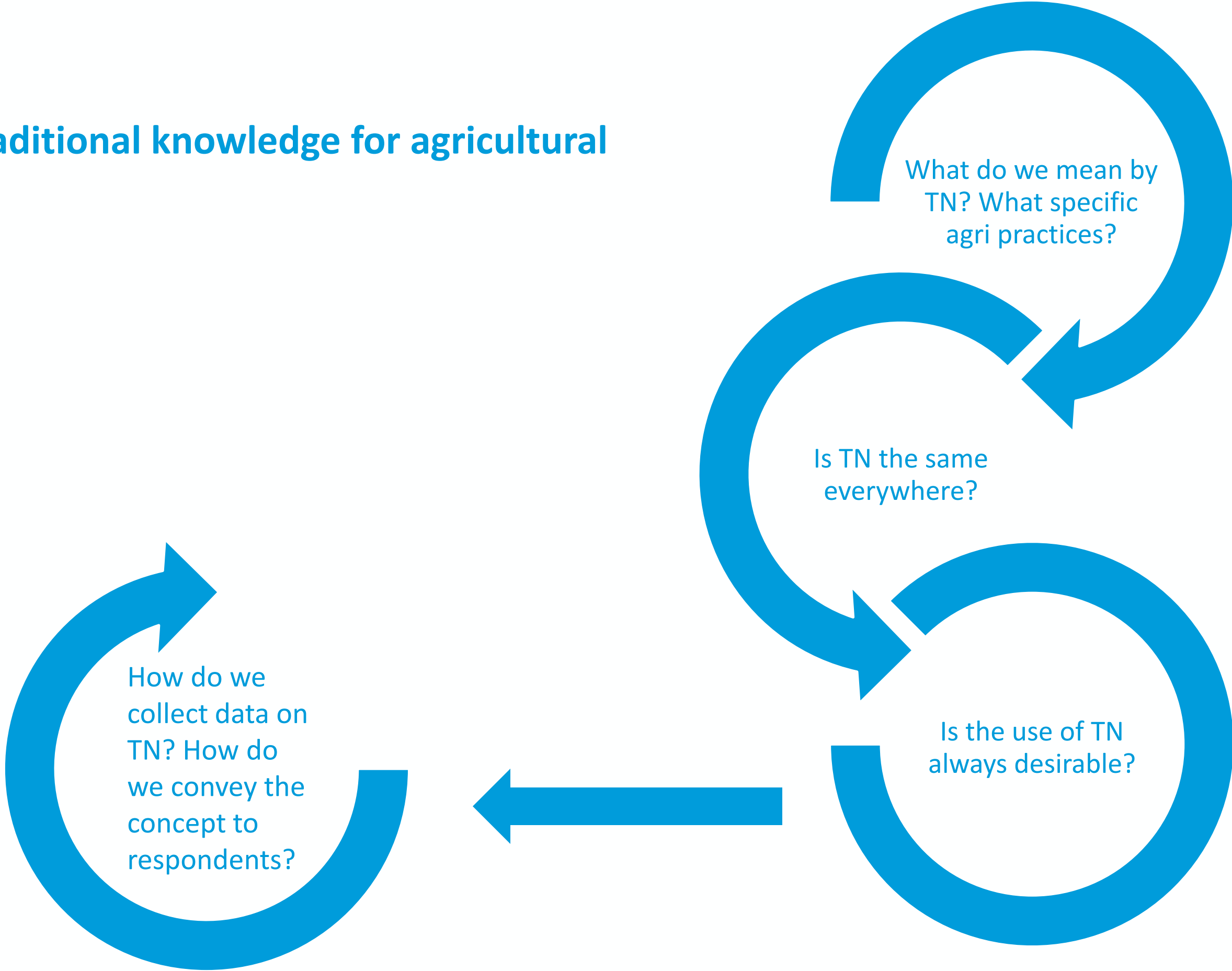
# Examples of indicators generated from administrative data

Figure 11: Proportion of staff in pacific power utilities that are women, by job category, 2018 (percentage)



# Examples of indicators generated from citizen data

Proportion of population utilizing traditional knowledge for agricultural purposes, by sex and ethnicity



# Gender-environment indicators currently in use by multiple countries



## ASIA-PACIFIC

- Cambodia
- Kiribati
- Mongolia
- Samoa
- Tonga
- Bangladesh (wip)
- Fiji (wip)
- Georgia (wip)
- Philippines (wip)



## AFRICA

- Tanzania
- Senegal

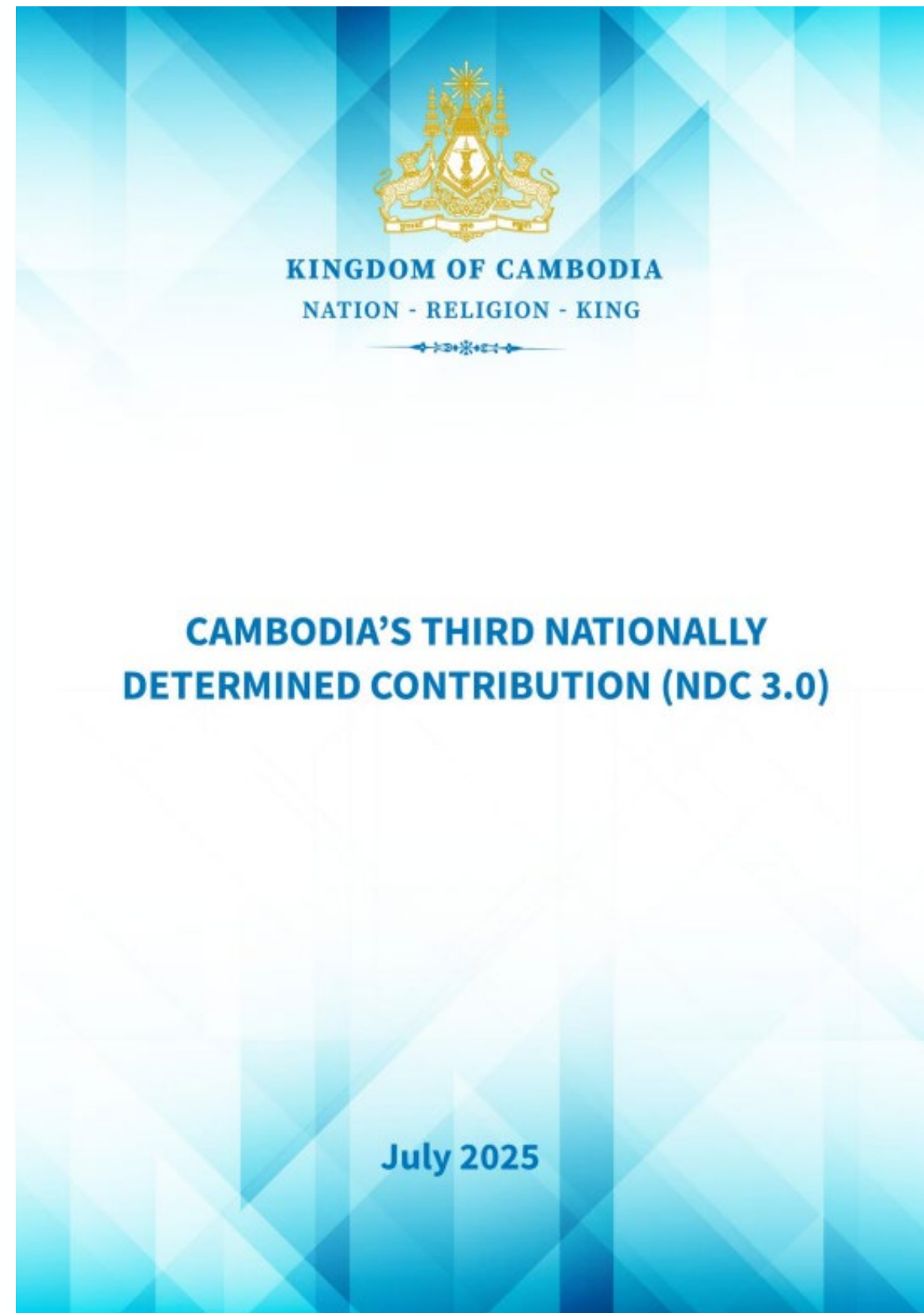


## AMERICAS

- Chile
- Mexico
- Brazil

WIP: Work in progress

# Uptake of GE indicators for national policies: Cambodia



National consultation on GE data needs

National GES data collected

Analysis and indicators generated

National consultation on climate-related priorities

Development of NDC based on existing data (including GES data)

Current NDC includes stand-alone gender section and gender mainstreamed throughout

NDC gender priorities respond to issues highlighted by data (e.g. fishery depletion, waste management, etc.)

Indicators in NDC monitoring framework include numerous gender-specific, many of which rely directly on GES data

# Uptake of GE indicators for national policies and global reporting: Tonga



# Uptake of GE indicators for global monitoring processes

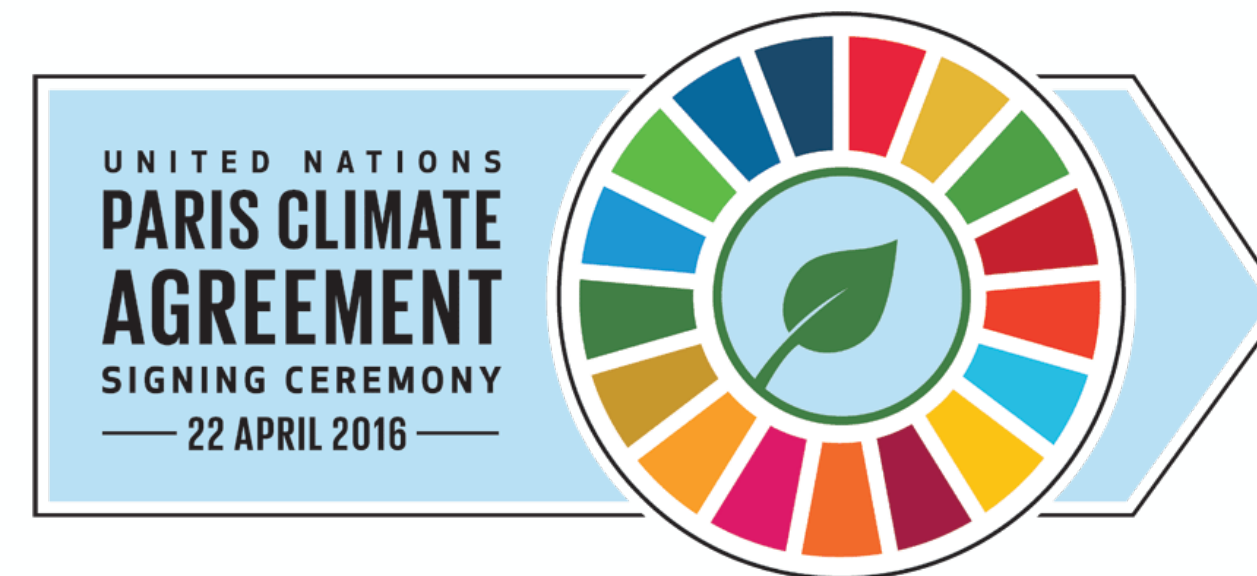
 United Nations  
Climate Change

Home COP 30 Process and meetings Topics Calendar Climate action

[Documents](#) > Final list of potential indicators, UAE–Belém wo...

## Final list of potential indicators, UAE–Belém work programme on indicators

Publication date: 09 Sep 2025  
Document type: Intersessional documents  
Author: UNFCCC Authors  
Topic: Adaptation



Experts, parties, UN Agencies send indicators to UNFCCC

Group of experts on GGA indicators review submissions

Multiple rounds of consultation, group work

Potential list of indicators for the GGA

Numerous indicators speak directly to Gender-Environment

# Thank you

Sara.duerto.Valero@unwomen.org  
<https://data.unwomen.org/>

