



National IT and Telecom Agency

Ministry of Science  
Technology and Innovation



# Measuring ICT Statistics



Results from Expert Group on Telecommunication/ICT  
Indicators meeting, March 2010

Christian Ø. Madsen  
NITA, Denmark



# Outline

## The Meeting in Brief

- Background
- Participants
- Purpose

## Results

- New set of indicators
- Examples of changes
  - Wireless broadband and fixed/wired broadband
  - BB Speed categories

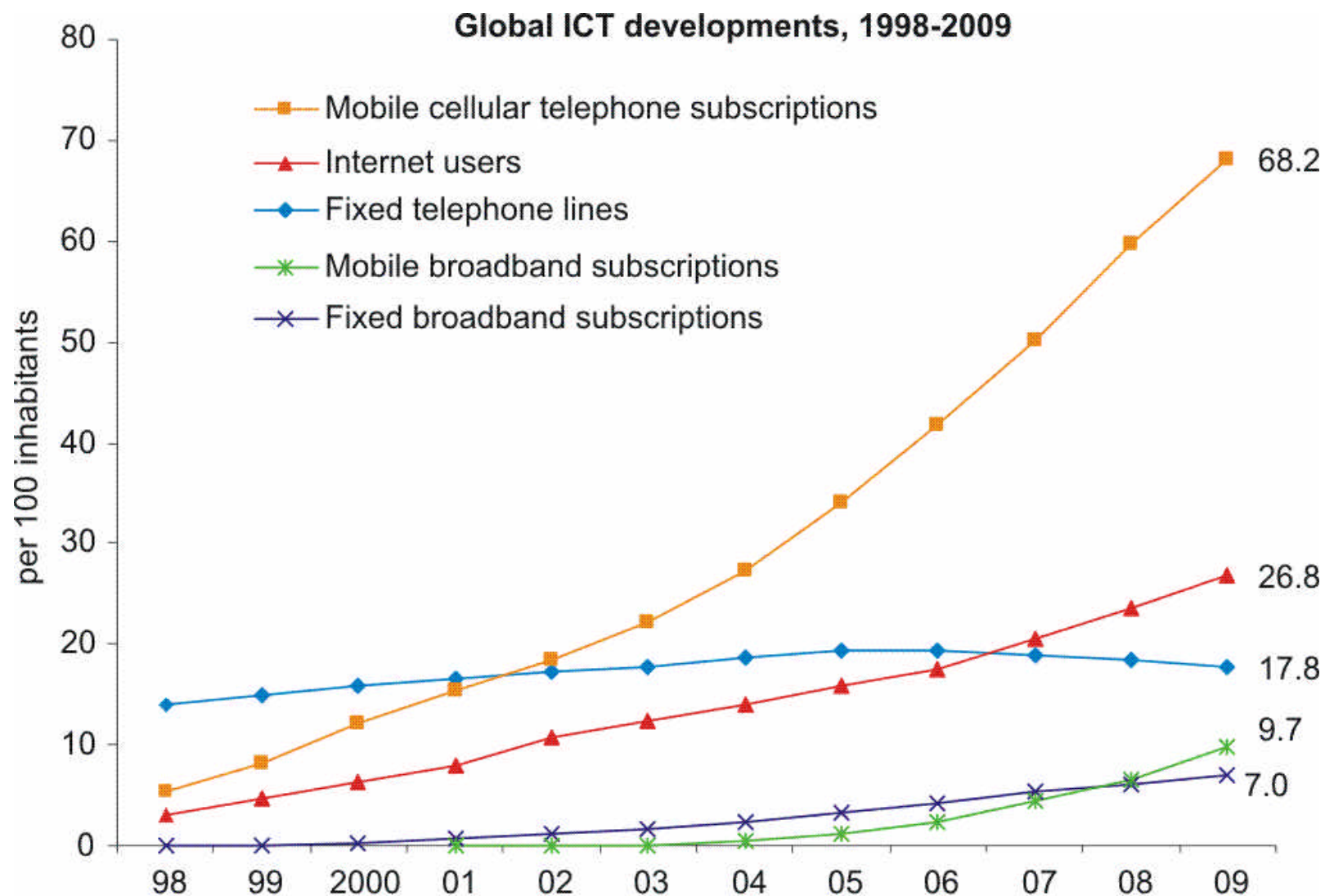






PERU  
0312 800035

public.com



Source: ITU World Telecommunication/ICT Indicators database.





# The new *Wireless Broadband* indicator

Satellite subscriptions

Terrestrial fixed wireless subscriptions

Terrestrial mobile wireless subscriptions

- Standard mobile subscriptions
- Dedicated data mobile subscriptions





## Fixed (wired) broadband

Consequence of the adoption of OECD's *Wireless broadband indicator*

Fixed/mobile or wired/wireless?

Indicators in Fixed (wired) broadband

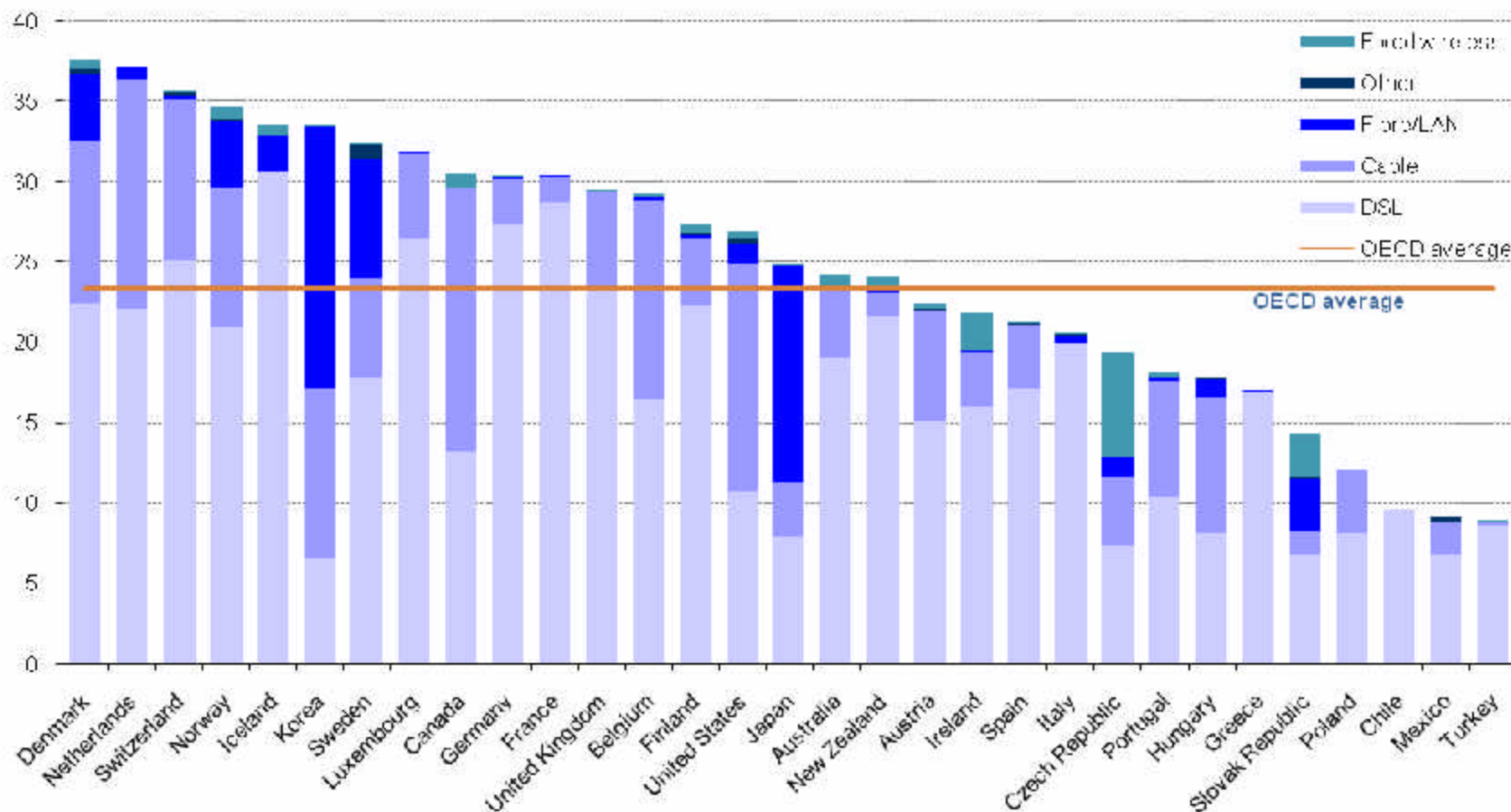
- Cable modem
- DSL
- Fibre-to-the-home/building
- Other

Results for broadband penetration rates



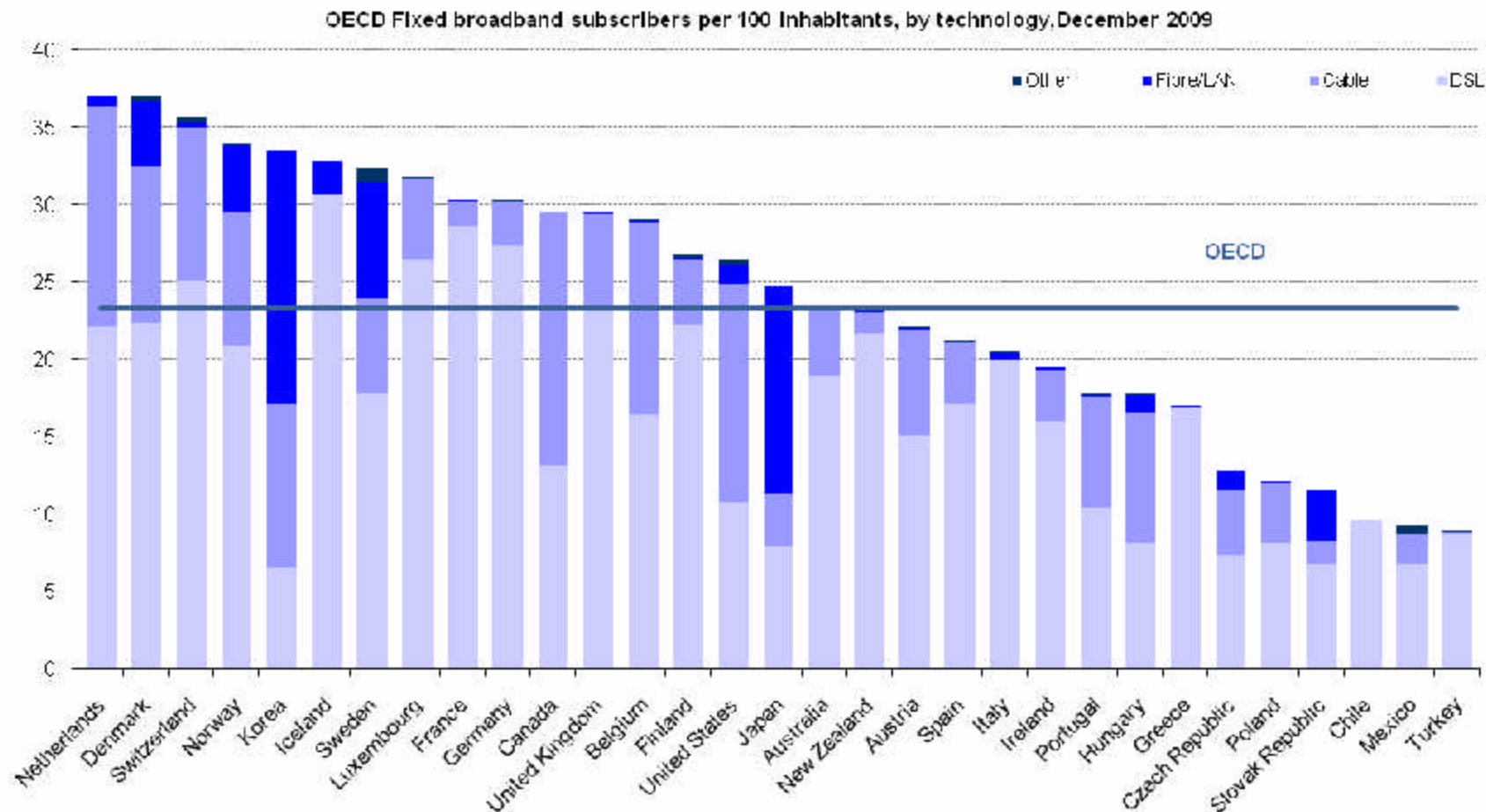
# Old indicator – *Fixed broadband*

OECD Fixed + (fixed wireless) broadband subscribers per 100 inhabitants, by technology, December 2009





# New definition – *Wired broadband*









# Fixed (wired) broadband subscriptions by speed

Need for data concerning speeds

Broadband definition – a delicate issue

Solution: speeds by categories

- 256-2Mbit/s
- 2-10 Mbit/s
- + 10 Mbit/s



# Thank you for your attention.

Contact information:  
[indicators@itu.int](mailto:indicators@itu.int)