



Republic of Malawi

2008 POPULATION AND HOUSING CENSUS

PRELIMINARY REPORT

National Statistical Office

P.O Box 333

ZOMBA

MALAWI

September 2008

Preface

The Malawi Growth and Development Strategy (MGDS) was launched in July 2007. The MGDS is the overarching development strategy for the country. The strategy clearly recognises the important role that official statistics play in informing policy choices and monitoring and evaluating progress towards realising development goals including the Millennium Development Goals (MDGs).

The Government of Malawi is fully cognisant of the need for quality statistics in policy formulation, targeting of resources and in the monitoring and evaluation of development programmes. The Government of Malawi through the National Statistical Office conducts a Population and Housing Census every 10 years to have evidence based policy and decision making.

The 2008 Population and Housing Census was conducted from 8th to 28th June 2008 by the National Statistical Office (NSO). As a primary source of socio-economic and demographic data, the 2008 Census provides the country with important information for national development programmes, good governance and decentralization.

On behalf of the Malawi Government, I would like to acknowledge the support received from Government, development partners and individuals during the whole process of the census operation. Specifically, I wish to thank the United Nations Population Fund (UNFPA) for providing funding, technical assistance and coordinating all other development partners. I would also like to thank the British Government through the Department for International Development (DFID), the Irish Government, the African Development Bank (AfDB) and GTZ for their financial support. Furthermore, my thanks go to other government departments for their cooperation and support during the census enumeration exercise.

Finally, I would like to thank staff from the National Statistical Office for their professionalism and dedication; and all those stakeholders who played a key role in the success of the 2008 Population and Housing Census.

Dr. Ken Lipenga, MP

Minister of Economic Planning and Development

Foreword and Acknowledgements

The 2008 Population and Housing Census was conducted from 8th to 28th June 2008 by the National Statistical Office (NSO). This is the fifth in a series of decennial censuses that Malawi has conducted since the country attained its independence in 1964. The first post-independence census was conducted in 1966 and others in 1977, 1987 and 1998. As a primary source of socio-economic and demographic data, the 2008 Census provides the country with important information for national development programmes, good governance and decentralization.

This report presents data on population size, sex, spatial distribution, population aged 18 years and over and the annual growth rates during the inter-censal period, 1998 - 2008. The report therefore presents a general picture of the population in Malawi. Comprehensive statistical information, covering all variables collected during the census, will be contained in substantive reports.

Several products are expected to be generated from the 2008 census data. These include main census analytical report; thematic analysis reports; statistical tables; census thematic maps; databases; electronic media documents; etc. Scanning and editing the data is continuing until the final clean data is produced. The results may differ slightly from the final results.

On behalf of the National Statistical Office, I would like to acknowledge the support received from Government, development partners and individuals during the whole process of the census operation. Specifically, I wish to thank the United Nations Population Fund (UNFPA) for providing funding, technical assistance and coordinating all other development partners. I would also like to thank the British Government through the Department for International Development (DFID), the Irish Government, the African Development Bank (AfDB) and GTZ for their financial support. Furthermore, my thanks go to other government departments for their cooperation and support during the census enumeration exercise.

Finally, I wish to thank all the staff from the National Statistical Office for their professionalism and dedication; the field staff (enumerators, supervisors and support staff); and, the general public for their massive support and cooperation during the enumeration.

Charles Machinjili

Commissioner of Statistics

Table of Contents

Preface.....	i
Foreword and Acknowledgements	ii
Table of Contents.....	iii
List of Tables	iv
List of Figures.....	iv
1.0. Introduction.....	1
2.0 Summary of Results	2
2.1 Total Population	2
2.2 Intercensal Population Increase and Annual Growth Rates.....	4
2.3 Spatial Population Distribution	8
2.4 Population Density	10
2.6 Households and Household Size.....	13
3.0 Summary.....	16
4.0 Annexes.....	17
Annex 1: Population by Sex, Region, and District (1998 and 2008).....	18
Annex 2: Population Distribution and Persons aged 18 years and over by Sex, District, TA, STA and Town,	19
Annex 3: Census Questionnaire.....	30

List of Tables

Table 1: Total Population by Sex, Region and District, 2008	3
Table 2: Annual Population Intercensal growth rates and increase, 1998 and 2008	6
Table 3: Population Distribution by Region and district, 1987, 1998 and 2008.....	9
Table 4 Population Density by Region, District and Year.....	11
Table 5: Population Distribution of Persons Aged 18 years and Over by Region and District	14
Table 6 : Households and Household Size 1987, 1998 and 2008.....	15

List of Figures

Figure 1: Annual Intercensal Growth Rates 1966-2008	4
Figure 2 : Map of Malawi Showing Annual Growth Rates 1998-2008.....	7
Figure 3: Map of Malawi showing Population Density	12

1.0. Introduction

The 2008 Population and Housing Census enumeration was conducted from 8th to 28th June 2008. This is the fifth in a series of decennial censuses that have been conducted in Malawi since the country attained its independence in 1964. The first post-independence census was conducted in 1966, followed by the 1977, 1987 and 1998 censuses.

In addition to variables collected in past censuses, the 2008 Census contains information on disability statistics, emigration, maternal and general deaths, and orphanhood status of children aged 18 years or younger. A copy of the questionnaire is in the Annex 3.

The extensive preparations and timely implementation of the census ensured high quality data. For monitoring purposes several supervisory levels were established. The first supervisory level was of senior headquarters, followed by district supervisors drawn from a combination of NSO and District Assembly's Office staff , Control Centre and Field Supervisors drawn from experienced field staff, in that order.

A total of 13,000 enumerators and 3,400 field and control center supervisors were recruited, trained and deployed to undertake enumeration in the whole country. Furthermore, adequate transportation (vehicles, motor bikes and bicycles) was provided.

For the first time of census taking by the NSO, district assemblies were an integral part of the census operation more especially with regard to advocacy, publicity and census enumeration.

Preparations for the 2008 census started in June 2003 with the updating of census maps, an exercise which was completed in July 2006 after successful demarcation of 12,631 Enumeration Areas (EAs). The Geographical Positioning System (GPS) was used to collect geo-points, and currently all EA maps are digitized.

Prior to census enumeration, the NSO undertook an intensive advocacy and publicity campaign to inform, educate and raise awareness to the general public about the nature, timing and usefulness of the census, and solicit the co-operation during the enumeration.

The NSO adopted scanning technology for data entry and output from this process was exported to CSPro. The NSO employed a total of 90 data entry clerks, working in two shifts and were deployed for a period of three weeks. Data processing and preparation of the Preliminary Report was completed by end September 2008. Data validation and editing was also accomplished.

2.0 Summary of Results

2.1 Total Population

The preliminary results from the Census give the total population in Malawi as 13,066,320. Out of this, 6,365,771 (49 percent) are males and 6,700,549 (51 percent) are females. The population grew from 9,933,868 in 1998 to 13,066,320 in 2008, representing an increase of 32 percent. Table 1 gives details of total population by region, district and by sex.

At regional level, the results show that the Southern Region has the highest population of 5,876,784 (45 percent), Central Region, 5,491,034 (42 percent) and Northern Region, 1,698,502 (13 percent).

Lilongwe rural has the highest population of 1,228,146, Likoma district has the lowest population of only 10,445. The results show that cities of Lilongwe, Blantyre, Zomba and Mzuzu have high population figures. Lilongwe City has the highest population of 669,021; Blantyre City, 661,444; Mzuzu City, 128,432; and, Zomba City 87,366.

Table 1: Total Population by Sex, Region and District, 2008

Region and District	Total	Male	Female
Malawi	13,066,320	6,365,771	6,700,549
Northern Region	1,698,502	824,057	874,445
Chitipa	179,072	86,152	92,920
Karonga	272,789	131,882	140,907
Nkhatabay	213,779	104,541	109,238
Rumphi	169,112	83,051	86,061
Mzimba	724,873	349,150	375,723
Mzuzu City	128,432	64,341	64,091
Likoma	10,445	4,940	5,505
Central Region	5,491,034	2,695,950	2,795,084
Kasungu	616,085	306,768	309,317
Nkhota kota	301,868	149,721	152,147
Ntchisi	224,098	109,349	114,749
Dowa	556,678	272,732	283,946
Salima	340,327	166,779	173,548
Lilongwe Rural	1,228,146	599,955	628,191
Lilongwe City	669,021	339,030	329,991
Mchinji	456,558	227,373	229,185
Dedza	623,789	297,676	326,113
Ntcheu	474,464	226,567	247,897
Southern Region	5,876,784	2,845,764	3,031,020
Mangochi	803,602	387,072	416,530
Machinga	488,996	234,747	254,249
Zomba Rural	583,167	279,489	303,678
Zomba City	87,366	44,670	42,696
Chiradzulu	290,946	137,194	153,752
Blantyre Rural	338,047	164,546	173,501
Blantyre City	661,444	337,655	323,789
Mwanza	94,476	45,672	48,804
Thyolo	587,455	279,979	307,476
Mulanje	525,429	247,391	278,038
Phalombe	313,227	149,471	163,756
Chikwawa	438,895	217,981	220,914
Nsanje	238,089	115,371	122,718
Balaka	316,748	151,637	165,111
Neno	108,897	52,889	56,008

2.2 Intercensal Population Increase and Annual Growth Rates

The preliminary results show that between 1998 and 2008, the population of Malawi increased by 32 percent, representing an intercensal annual growth rate of 2.8 percent per annum. The chart below shows the trend of annual intercensal growth rates from 1966 to 2008. There is a general increases in annual population growth since 1966 except for the period 1987 - 1998, when a low figure of 2.0 was observed. It is believed that the low growth was due to the departure of the Mozambique refugees who left the country in the early 1990s.

Figure 1: Annual Intercensal Growth Rates 1966-2008

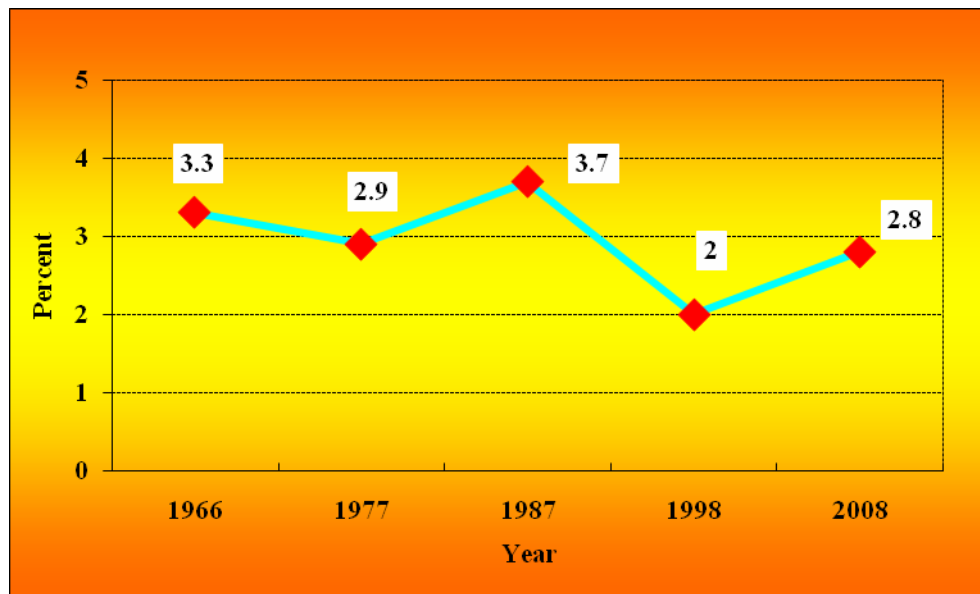


Table 2, shows intercensal annual growth rates and intercensal population increase for the period, 1998 – 2008. Over the three decades the intercensal annual growth rate in the Northern Region has increased by 3.3 percent, Central Region by 3.1 percent and 2.4 percent in the Southern Region. Similar patterns are observed for the intercensal population increase in the three regions.

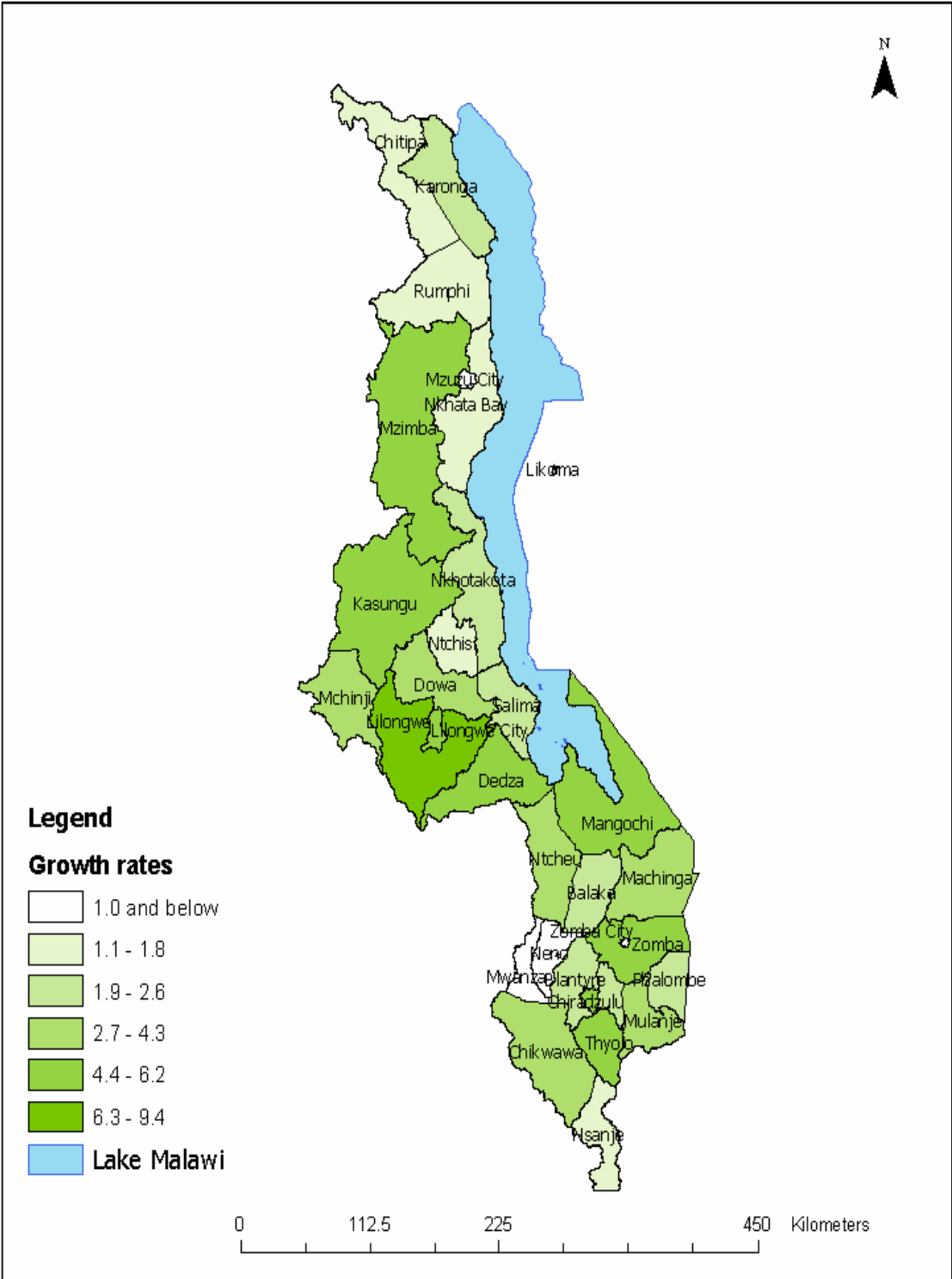
There are minimal differences in the intercensal annual growth rate amongst the four cities. The annual growth rates for Lilongwe City is 4.3 percent, Mzuzu city, 4 percent, Zomba city, 2.9 percent and Blantyre city, 2.8 percent.

The preliminary results also show that there were major differences in annual growth rates among districts. The highest annual growth is observed in Mwanza, 4.1 percent; Chitipa and Chitipa Districts stand at 3.5 percent each. On the other hand, the lowest annual population growth is observed in Blantyre rural 1 percent.

Table 2: Annual Population Intercensal growth rates and increase, 1998 and 2008

District and Region	Intercensal Annual Growth Rate (%) 1998-2008			Intercensal Population Increase 1998-2008	
	Total	Male	Female	Number	Percent
Malawi	2.8	2.8	2.9	3,132,452	31.5
Northern Region	3.3	3.2	3.3	464,942	37.7
Chitipa	3.5	3.6	3.5	52,273	41.2
Karonga	3.5	3.5	3.4	78,217	40.2
Nkhatabay	2.7	2.7	2.6	49,018	29.8
Rumphi	2.8	2.8	2.9	40,752	31.7
Mzimba	3.3	1.5	1.9	200,859	38.3
Mzuzu City	4.0	3.7	4.3	41,452	47.7
Likoma	2.6	2.9	2.4	2,371	29.4
Central Region	3.1	3.0	3.2	1,424,694	35.0
Kasungu	2.5	2.2	2.9	135,426	28.2
Nkhota kota	2.8	2.7	2.9	72,408	31.6
Ntchisi	3.0	2.8	3.2	56,218	33.5
Dowa	3.1	3.0	3.2	145,291	35.3
Salima	3.2	3.2	3.3	92,113	37.1
Lilongwe Rural	3.1	3.1	3.1	322,257	35.6
Lilongwe City	4.3	3.9	4.7	228,550	51.9
Mchinji	3.5	3.3	3.6	131,617	40.5
Dedza	2.5	2.6	2.5	137,107	28.2
Ntcheu	2.5	2.6	2.5	103,707	28.0
Southern Region	2.4	2.4	2.5	1,242,816	26.8
Mangochi	2.8	2.8	2.8	193,363	31.7
Machinga	2.9	2.9	2.8	119,382	32.3
Zomba Rural	2.0	1.9	2.0	102,421	21.3
Zomba City	2.9	2.8	3.0	21,451	32.5
Chiradzulu	2.1	2.1	2.2	54,896	23.3
Blantyre Rural	1.0	0.9	1.0	30,703	10.0
Blantyre City	2.8	2.6	3.1	159,391	31.7
Mwanza	4.1	4.1	4.1	31,256	49.4
Thyolo	2.5	2.5	2.5	128,479	28.0
Mulanje	2.1	2.1	2.1	97,107	22.7
Phalombe	3.1	3.2	3.0	81,237	35.0
Chikwawa	2.1	2.1	2.2	82,213	23.0
Nsanje	2.1	2.1	2.1	43,165	22.1
Balaka	2.3	2.3	2.3	63,650	25.1
Neno	3.9	3.8	3.9	34,102	45.6

Figure 2 : Map of Malawi showing annual growth rates by district 1998-2008



2.3 Spatial Population Distribution

Table 3 shows population distribution by Region and district for the period, 1987, 1998 and 2008. The Table indicates that in 2008, 45 percent of the people live in the Southern Region while 42 percent and 13 percent are in the Central Region and Northern Region, respectively.

The results also show that at district level, the highest percentage of the population live in Lilongwe rural (9 percent), followed by Mangochi (6.2 percent). The district with least population is Likoma with a population share of less than 1 percent.

Table 3: Population Distribution by Region and district, 1987, 1998 and 2008

Region and District	Population Census			Population Distribution		
	2008	1998	1987	2008	1998	1987
Malawi	13,066,320	9,933,868	7,988,507	100.0	100.0	100.0
Northern Region	1,698,502	1,233,560	911,787	13.0	12.4	11.4
Chitipa	179,072	126,799	96,794	1.4	1.3	1.2
Karonga	272,789	194,572	148,014	2.1	2.0	1.9
Nkhatabay	213,779	164,761	130,189	1.6	1.7	1.6
Rumphi	169,112	128,360	94,902	1.3	1.3	1.2
Mzimba	724,873	524,014	389,479	5.5	5.3	4.9
Mzuzu City	128,432	86,980	44,217	1.0	0.9	0.6
Likoma	10,445	8,074	8,192	0.1	0.1	0.1
Central Region	5,491,034	4,066,340	3,110,986	42.0	40.9	38.9
Kasungu	616,085	480,659	323,453	4.7	4.8	4.0
Nkhota kota	301,868	229,460	158,044	2.3	2.3	2.0
Ntchisi	224,098	167,880	120,860	1.7	1.7	1.5
Dowa	556,678	411,387	322,432	4.3	4.1	4.0
Salima	340,327	248,214	189,173	2.6	2.5	2.4
Lilongwe Rural	1,228,146	905,889	753,309	9.4	9.1	9.4
Lilongwe City	669,021	440,471	223,318	5.1	4.4	2.8
Mchinji	456,558	324,941	249,843	3.5	3.3	3.1
Dedza	623,789	486,682	411,787	4.8	4.9	5.2
Ntcheu	474,464	370,757	358,767	3.6	3.7	4.5
Southern Region	5,876,784	4,633,968	3,965,734	45.0	46.6	49.6
Mangochi	803,602	610,239	496,578	6.2	6.1	6.2
Machinga	488,996	369,614	301,849	3.7	3.7	3.8
Zomba Rural	583,167	480,746	398,365	4.5	4.8	5.0
Zomba City	87,366	65,915	43,250	0.7	0.7	0.5
Chiradzulu	290,946	236,050	210,912	2.2	2.4	2.6
Blantyre Rural	338,047	307,344	256,405	2.6	3.1	3.2
Blantyre City	661,444	502,053	333,120	5.1	5.1	4.2
Mwanza	94,476	63,220	60,305	0.7	0.6	0.8
Thyolo	587,455	458,976	431,157	4.5	4.6	5.4
Mulanje	525,429	428,322	419,928	4.0	4.3	5.3
Phalombe	313,227	231,990	218,134	2.4	2.3	2.7
Chikwawa	438,895	356,682	316,733	3.4	3.6	4.0
Nsanje	238,089	194,924	204,374	1.8	2.0	2.6
Balaka	316,748	253,098	213,416	2.4	2.5	2.7
Neno	108,897	74,795	61,208	0.8	0.8	0.8

2.4 Population Density

Table 4 gives population density by Region and District as calculated for 1987, 1998 and 2008.

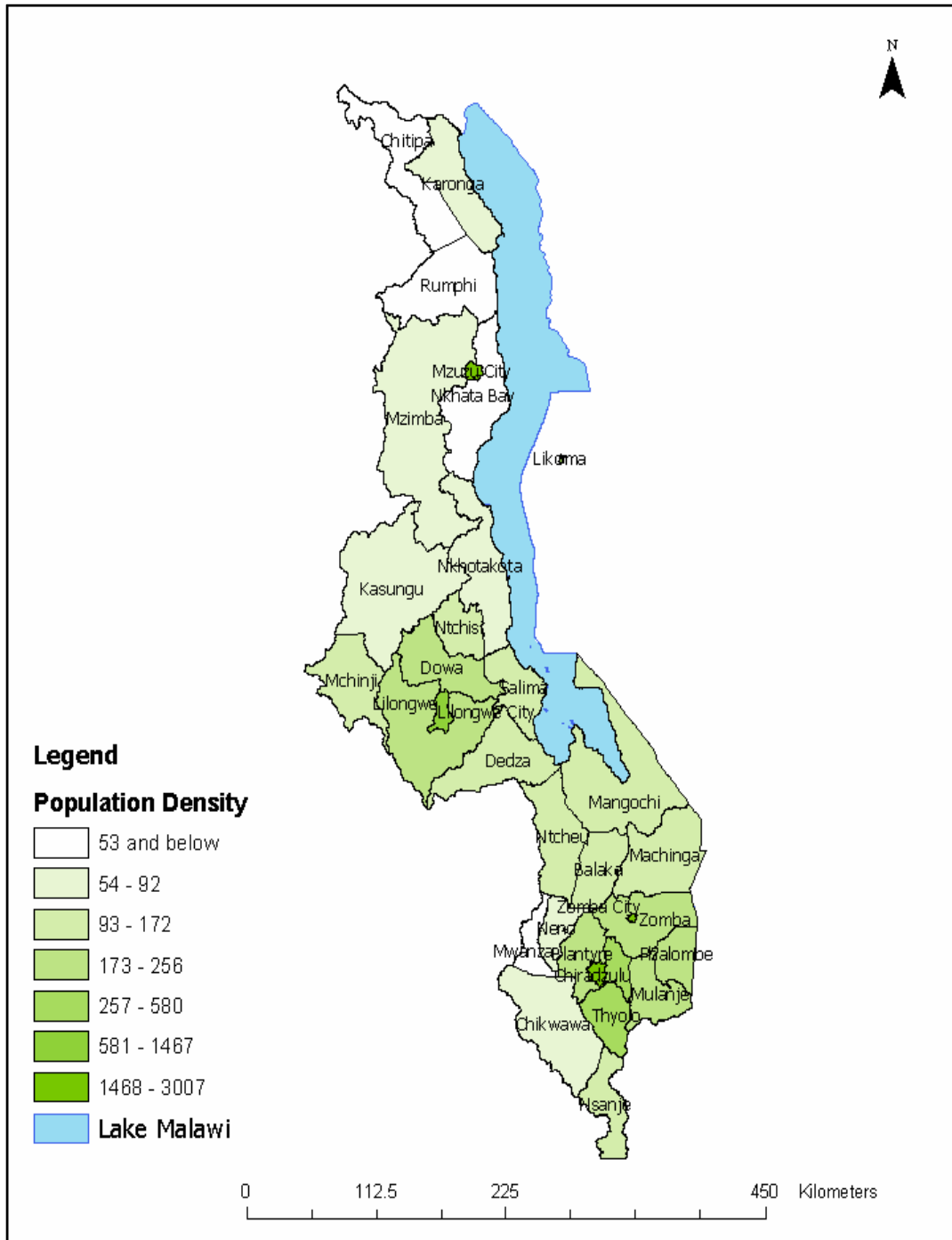
Over the three decades, population density has shown an upward trend. The population density is given as 139 people per square kilometer, 105 people per square kilometer, 85 people per square kilometer in the period 2008, 1998 and 1987, respectively. Across the regions, there are more people per square kilometer in the Southern Region (185) than in the other two regions, 154 and 63 in the Central and Northern region, respectively.

Among the districts, Likoma district has the highest population density of 580 per square kilometer, and Rumphi district has the lowest population density of 35 people per square kilometer.

Table 4 Population Density by Region, District and Year

Region and District	Land Area	Population Census			Population Density		
	(Sq. Km.)	2008	1998	1987	2008	1998	1987
Malawi	94,276	13,066,320	9,933,868	7,988,507	139	105	85
		-					
Northern	26,931	1,698,502	1,233,560	911,787	63	46	34
Chitipa	4,288	179,072	126,799	96,794	42	30	23
Karonga	3,355	272,789	194,572	148,014	81	58	44
Nkhatabay	4,071	213,779	164,761	130,189	53	40	32
Rumphi	4,769	169,112	128,360	94,902	35	27	20
Mzimba	10,382	724,873	524,014	389,479	70	50	38
Mzuzu City	48	128,432	86,980	44,217	2,676	1,812	921
Likoma	18	10,445	8,074	8,192	580	449	455
Central Region	35,592	5,491,034	4,066,340	3,110,986	154	114	87
Kasungu	7,878	616,085	480,659	323,453	78	61	41
Nkhota kota	4,259	301,868	229,460	158,044	71	54	37
Ntchisi	1,655	224,098	167,880	120,860	135	101	73
Dowa	3,041	556,678	411,387	322,432	183	135	106
Salima	2,196	340,327	248,214	189,173	155	113	86
Lilongwe Rural	5,703	1,228,146	1,346,360	976,627	215	236	171
Lilongwe City	456	669,021	440,471	223,318	1,467	966	490
Mchinji	3,356	456,558	324,941	249,843	136	97	74
Dedza	3,624	623,789	486,682	411,787	172	134	114
Ntcheu	3,424	474,464	370,757	358,767	139	108	105
Southern	31,753	5,876,784	4,633,968	3,965,734	185	146	125
Mangochi	6,273	803,602	610,239	496,578	128	97	79
Machinga	3,771	488,996	369,614	301,849	130	98	80
Zomba Rural	2,541	583,167	480,746	398,365	230	189	157
Zomba City	39	87,366	65,915	43,250	2,240	1,690	1,109
Chiradzulu	767	290,946	236,050	210,912	379	308	275
Blantyre Rural	1,792	338,047	307,344	256,405	189	172	143
Blantyre City	220	661,444	502,053	333,120	3,007	2,282	1,514
Mwanza	2,295	94,476	63,220	60,305	41	28	26
Thyolo	1,715	587,455	458,976	431,157	343	268	251
Mulanje	2,056	525,429	428,322	419,928	256	208	204
Phalombe	1,394	313,227	231,990	218,134	225	166	156
Chikwawa	4,755	438,895	356,682	316,733	92	75	67
Nsanje	1,942	238,089	194,924	204,374	123	100	105
Balaka	2,193	316,748	253,098	213,416	144	115	97
Neno	1,469	108,897	74,795	61,208	74	51	42

Figure 3: Map of Malawi showing Population Density by district, 2008



2.5 Population of Persons aged 18 years and above

Table 5, shows population distribution of persons aged 18 years and above by region, district and by sex. Annex 3 provides further information by Traditional Authority (TA). The Table indicates that population aged 18 years and over is 6,216,432 (48 percent of the total). Of this 2,972,335 are males and 3,244,097 are females.

The population distribution of persons aged 18 and above across regions show that Southern Region has a population of 2,807,362 (45 percent), Central Region, 2,753,222 (42 percent) and 824,781 (13 percent) in the Northern Region.

2.6 Households and Household Size

Table 6 shows there are 2,957,683 households in Malawi. This represents a 37 percent increase from 2,273,846 households in 1998. The results further show a 4.4 average number of persons per household in Malawi.

Across the regions, there are more people per household in the Northern region (4.9 persons) than in Central and Southern regions at 4.5 and 4.2 persons, respectively.

At district level, Likoma has the highest average household size of 5 persons while among cities, Blantyre has the least number of persons per household (4.2 persons).

Overall, the results show an increasing trend in number of persons per household over the three decades.

Table 5: Population Distribution of Persons Aged 18 years and Over by Region and District

District and Region	AGE		
	Total 18 +	Male 18+	Female 18+
Malawi	6,216,432	2,972,335	3,244,097
Northern Region	798,221	378,905	419,316
Chitipa	80,166	37,579	42,587
Karonga	126,494	59,481	67,013
Nkhatabay	101,179	47,755	53,424
Rumphi	79,947	38,552	41,395
Mzimba	338,817	158,782	180,035
Mzuzu City	66,665	34,502	32,163
Likoma	4,953	2,254	2,699
Central Region	2,610,849	1,271,497	1,339,352
Kasungu	285,121	143,012	142,109
Nkhota kota	139,553	68,827	70,726
Ntchisi	104,418	50,769	53,649
Dowa	266,285	129,878	136,407
Salima	158,856	76,398	82,458
Lilongwe Rural	580,776	278,845	301,931
Lilongwe City	344,995	182,148	162,847
Mchinji	208,643	103,887	104,756
Dedza	295,068	134,293	160,775
Ntcheu	227,134	103,440	123,694
Southern Region	2,807,362	1,321,933	1,485,429
Mangochi	370,500	170,248	200,252
Machinga	224,339	103,487	120,852
Zomba Rural	276,396	127,749	148,647
Zomba City	46,240	24,657	21,583
Chiradzulu	141,584	63,104	78,480
Blantyre Rural	163,952	77,806	86,146
Blantyre City	344,513	181,715	162,798
Mwanza	44,184	20,746	23,438
Thyolo	280,441	128,095	152,346
Mulanje	253,003	112,911	140,092
Phalombe	145,851	66,617	79,234
Chikwawa	208,078	102,155	105,923
Nsanje	111,209	51,718	59,491
Balaka	147,195	67,283	79,912
Neno	49,877	23,642	26,235

Table 6 : Households and Household Size 1987, 1998 and 2008

	2008	2008	1998	1987
	Total Number of Households	Average Household size	Average Household size	Average Household size
Malawi	2,957,683	4.4	4.3	4.0
Northern Region	345,752	4.9	5.1	4.8
Chitipa	37,780	4.7	4.9	4.9
Karonga	57,808	4.7	4.9	5.3
Nkhatabay	42,269	5.1	4.9	4.7
Rumphi	36,037	4.7	5.0	4.7
Mzimba	142,980	5.1	5.2	4.6
Mzuzu City	26,858	4.8	4.6	4.2
Likoma	2,020	5.2	5.2	5.3
Central Region	1,222,365	4.5	4.5	4.3
Kasungu	127,265	4.8	4.9	4.4
Nkhota kota	62,468	4.8	4.6	4.0
Ntchisi	47,428	4.7	4.7	4.6
Dowa	121,884	4.6	4.5	4.5
Salima	77,531	4.4	4.2	3.9
Lilongwe Rural	275,194	4.5	4.3	4.3
Lilongwe City	153,717	4.4	3.4	3.1
Mchinji	97,209	4.7	4.6	4.4
Dedza	145,878	4.3	4.3	4.3
Ntcheu	113,791	4.2	4.3	4.4
Southern Region	1,389,566	4.2	4.1	3.7
Mangochi	185,915	4.3	4.0	4.0
Machinga	115,136	4.2	4.1	2.4
Zomba Rural	142,394	4.1	4.0	4.0
Zomba City	19,041	4.6	4.3	4.0
Chiradzulu	71,560	4.1	4.0	4.2
Blantyre Rural	80,879	4.2	4.1	4.0
Blantyre City	154,782	4.3	4.0	3.9
Mwanza	22,018	4.3	4.3	4.3
Thyolo	142,039	4.1	4.1	4.2
Mulanje	127,417	4.1	3.9	2.7
Phalombe	76,679	4.1	3.9	4.1
Chikwawa	98,035	4.5	4.5	4.5
Nsanje	52,600	4.5	4.5	4.3
Balaka	75,656	4.2	4.2	4.1
Neno	25,415	4.3	4.2	4.1

3.0 Summary

In summary, the 2008 Population and Housing Census preliminary results show that;

- a) The total population of Malawi is 13,066,320 persons. The population has increased from 9.9 million in 1998 giving an overall population increase of 32 percent.
- b) The population growth rate for Malawi during the intercensal period 1998 and 2008 is 2.8 percent per annum as compared to 2.0 percent during the intercensal period 1987 -1998.
- c) The spatial distribution of the population shows that 45 percent of the country's population live in the Southern Region of the country, 42 percent in the Central Region and 13 percent Northern Region.
- d) There is an increase in population density over the three decades. The population density has been increasing from 85 people per square kilometer in 1978 to 105 per square kilometer in 1998. In 2008 the density has increased to 139 people per square kilometer.
- e) The population of 18 years and over is 6,216,432, of whom 3.2 million are females and 3 million are males.

4.0 Annexes

Annex 1: Population by Sex, Region, and District (1998 and 2008)

Region and District	2008 Census			1998 Census		
	Total	Male	Female	Total	Male	Female
Malawi	13,066,320	6,365,771	6,700,549	9,933,868	4,867,563	5,066,305
Northern Region	1,698,502	824,057	874,445	1,233,560	601,752	631,808
Chitipa	179,072	86,152	92,920	126,799	60,682	66,117
Karonga	272,789	131,882	140,907	194,572	93,673	100,899
Nkhatabay	213,779	104,541	109,238	164,761	80,107	84,654
Rumphi	169,112	83,051	86,061	128,360	63,272	65,088
Mzimba	724,873	349,150	375,723	524,014	255,439	268,575
Mzuzu City	128,432	64,341	64,091	86,980	44,848	42,132
Likoma	10,445	4,940	5,505	8,074	3,731	4,343
Central Region	5,491,034	2,695,950	2,795,084	4,066,340	2,016,166	2,050,174
Kasungu	616,085	306,768	309,317	480,659	247,850	232,809
Nkhota kota	301,868	149,721	152,147	229,460	114,847	114,613
Ntchisi	224,098	109,349	114,749	167,880	83,595	84,285
Dowa	556,678	272,732	283,946	411,387	203,828	207,559
Salima	340,327	166,779	173,548	248,214	121,994	126,220
Lilongwe Rural	1,228,146	599,955	628,191	905,889	442,338	463,551
Lilongwe City	669,021	339,030	329,991	440,471	231,516	208,955
Mchinji	456,558	227,373	229,185	324,941	164,090	160,851
Dedza	623,789	297,676	326,113	486,682	230,237	256,445
Ntcheu	474,464	226,567	247,897	370,757	175,871	194,886
Southern Region	5,876,784	2,845,764	3,031,020	4,633,968	2,249,645	2,384,323
Mangochi	803,602	387,072	416,530	610,239	293,217	317,022
Machinga	488,996	234,747	254,249	369,614	176,853	192,761
Zomba Rural	583,167	279,489	303,678	546,661	265,859	280,802
Zomba City	87,366	44,670	42,696	65,915	34,062	31,853
Chiradzulu	290,946	137,194	153,752	236,050	111,376	124,674
Blantyre Rural	338,047	164,546	173,501	307,344	150,614	156,730
Blantyre City	661,444	337,655	323,789	502,053	262,815	239,238
Mwanza	94,476	45,672	48,804	62,377	30,132	32,245
Thyolo	587,455	279,979	307,476	458,976	218,381	240,595
Mulanje	525,429	247,391	278,038	428,322	200,834	227,488
Phalombe	313,227	149,471	163,756	231,990	109,229	122,761
Chikwawa	438,895	217,981	220,914	356,682	178,217	178,465
Nsanje	238,089	115,371	122,718	194,924	94,457	100,467
Balaka	316,748	151,637	165,111	253,098	120,706	132,392
Neno	108,897	52,889	56,008	82,651	40,392	42,259

Annex 2: Population Distribution and Persons aged 18 years and over by Sex, District, TA, STA and Town,

District and TA/STA or Town	Total	Male	Female	Total 18+	Male 18+	Female 18+
Malawi	13,066,320	6,365,771	6,700,549	6,216,427	2,972,335	3,244,097
Northern Region	1,698,502	824,057	874,445	798,221	378,905	419,316
Chitipa	179,072	86,152	92,920	80,166	37,579	42,587
Mwabulambaya	70,193	33,539	36,654	31,001	14,414	16,587
Mwenemisuku	27,668	13,230	14,438	12,488	5,724	6,764
Mwenewenye	19,540	9,384	10,156	8,715	4,118	4,597
Nthalire	27,512	13,391	14,121	12,265	5,885	6,380
Kameme	19,427	9,279	10,148	8,565	3,872	4,693
Chitipa Boma	14,732	7,329	7,403	7,132	3,566	3,566
Karonga	272,789	131,882	140,907	126,494	59,481	67,013
Kilupula	60,667	28,771	31,896	27,509	12,438	15,071
S/C Mwakaboko	19,572	9,476	10,096	9,134	4,263	4,871
Kyungu	67,521	32,960	34,561	31,318	14,914	16,404
Wasambo	54,692	26,320	28,372	24,859	11,494	13,365
S/C Mwirang'ombe	29,263	14,086	15,177	12,997	5,958	7,039
Karonga town	41,074	20,269	20,805	20,677	10,414	10,263
Nkhatabay	213,779	104,541	109,238	101,179	47,755	53,424
Kabunduli	38,147	19,141	19,006	18,214	8,918	9,296
Fukamapiri	17,213	8,447	8,766	7,981	3,784	4,197
Malenga Mzoma	9,039	4,235	4,804	4,423	1,979	2,444
S/C Malanda	19,997	9,812	10,185	9,833	4,681	5,152
S/C Zilakoma	13,582	6,694	6,888	6,351	2,955	3,396
Mankhambira	19,914	9,799	10,115	8,935	4,117	4,818
S/C Fukamalaza	11,292	5,354	5,938	5,258	2,360	2,898
S/C Mkumbira	10,888	5,314	5,574	5,086	2,385	2,701
Musisya	15,982	7,653	8,329	7,630	3,498	4,132
S/C Nyaluwanga	7,355	3,710	3,645	3,366	1,665	1,701
S/C Mkondowe	1,860	881	979	851	366	485
Timbiri	35,987	17,500	18,487	16,752	7,940	8,812
Boghoyo	1,263	566	697	574	242	332
Nkhata Bay Boma	11,260	5,435	5,825	5,925	2,865	3,060

**Annex 2: Population Distribution and Persons aged 18 years and over by Sex, District, TA,
STA and Town, (continued)**

District and TA/STA or Town	Total	Male	Female	Total 18+	Male 18+	Female 18+
Rumphi	169,112	83,051	86,061	79,947	38,552	41,395
Chikulamayembe	62,497	30,698	31,799	29,643	14,256	15,387
Mwamlomwe	8,071	3,946	4,125	3,712	1,716	1,996
S/C Mwahenga	12,135	5,947	6,188	5,654	2,724	2,930
S/C Mwalweni	20,202	9,857	10,345	9,588	4,559	5,029
S/C Kachulu	8,951	4,454	4,497	4,236	2,078	2,158
S/C Chapinduka	2,776	1,311	1,465	1,251	530	721
S/C Mwankhunikira	20,753	10,198	10,555	9,071	4,417	4,654
Katumbi	11,538	5,646	5,892	5,387	2,549	2,838
S/C Zolokere	4,360	2,121	2,239	1,981	935	1,046
Nyika National park (part A)	416	228	188	203	133	70
Vwaza marsh game reserve (A)	44	19	25	18	10	8
Rumphi Boma	17,369	8,626	8,743	9,203	4,645	4,558
Mzimba	724,873	349,150	375,723	338,817	158,782	180,035
M'mbelwa	117,533	55,002	62,531	54,091	23,828	30,263
Mtwalo	140,599	68,815	71,784	66,570	32,124	34,446
S/C Kapingo Sibande	56,201	27,072	29,129	26,261	12,297	13,964
S/C Jaravikuba Munthali	14,266	6,977	7,289	6,860	3,307	3,553
Chindi	131,339	61,596	69,743	60,340	26,604	33,736
Mzikubola	66,873	32,415	34,458	31,255	15,125	16,130
Mabulabo	63,429	30,877	32,552	29,409	14,088	15,321
S/C Khosolo Gwaza Jere	37,085	18,413	18,672	16,580	8,153	8,427
Mpherembe	44,525	22,146	22,379	21,489	10,759	10,730
Mzukuzuku	32,267	15,478	16,789	15,129	6,926	8,203
Mzimba Boma	20,756	10,359	10,397	10,833	5,571	5,262
Mzuzu City	128,432	64,341	64,091	66,665	34,502	32,163
Nkhorongo	3,186	1,636	1,550	1,581	781	800
Lupaso Ward	17,612	8,741	8,871	9,528	4,759	4,769
Zolozolo	7,556	3,724	3,832	4,266	2,185	2,081
Chiputula Ward	24,029	12,167	11,862	12,231	6,445	5,786
Chibanja Ward	9,911	4,944	4,967	5,338	2,744	2,594
Mchengautuwa Ward	21,894	11,056	10,838	11,298	5,846	5,452
Katoto Ward	7,146	3,690	3,456	3,895	2,156	1,739
Jombo Ward	1,350	729	621	702	378	324
Muzilawayinge Ward	3,343	1,669	1,674	1,818	944	874
Chasefu Ward	1,832	880	952	1,039	483	556
Katawa Ward	3,607	1,472	2,135	1,624	834	790
Masasa Ward	676	313	363	462	215	247
Kaning'ina Ward	3,721	1,951	1,770	1,695	908	787
Viphya Ward	12,282	6,270	6,012	6,326	3,375	2,951
Msongwe Ward	2,693	1,335	1,358	1,256	633	623
New Airport Site	7,594	3,764	3,830	3,606	1,816	1,790
Likoma	10,445	4,940	5,505	4,953	2,254	2,699
Mkumpha	9,088	4,276	4,812	4,235	1,898	2,337
Likoma Boma	1,357	664	693	718	356	362

**Annex 2: Population Distribution and Persons aged 18 years and over by Sex, District, TA,
STA and Town, (continued)**

District and TA/STA or Town	Total	Male	Female	Total 18+	Male 18+	Female 18+
Central Region	5,491,034	2,695,950	2,795,084	2,610,849	1,271,497	1,339,352
Kasungu	616,085	306,768	309,317	285,121	143,012	142,109
Kaluluma	45,400	21,950	23,450	21,314	10,305	11,009
S/C Simlemba	29,400	14,434	14,966	13,595	6,621	6,974
S/C Mnyanja	29,694	14,662	15,032	13,651	6,740	6,911
S/C Chisikwa	6,366	3,093	3,273	3,082	1,495	1,587
Kaomba	38,183	18,840	19,343	18,583	9,243	9,340
S/C Lukwa	30,969	15,519	15,450	14,323	7,284	7,039
S/C Kawamba	40,836	20,550	20,286	18,367	9,256	9,111
S/C Njombwa	32,730	16,446	16,284	14,869	7,616	7,253
S/C Chilowamatambe	37,713	18,939	18,774	17,459	8,839	8,620
Chulu	59,140	29,105	30,035	27,760	13,541	14,219
Santhe	83,930	42,008	41,922	37,273	18,826	18,447
Wimbe	79,336	39,627	39,709	36,967	18,776	18,191
Kapelula	37,686	18,905	18,781	16,647	8,362	8,285
Kasungu National Park	409	194	215	179	108	71
Mwase	21,942	10,960	10,982	10,274	5,143	5,131
Kasungu Town	42,351	21,536	20,815	20,778	10,857	9,921
Nkhota kota	301,868	149,721	152,147	139,553	68,827	70,726
Kanyenda	88,184	45,427	42,757	42,402	22,357	20,045
S/C Kafuzila	17,827	8,729	9,098	8,284	3,892	4,392
Malengachanzi	53,135	25,784	27,351	24,046	11,405	12,641
S/C Mphonde	25,434	12,332	13,102	11,204	5,302	5,902
Mwadzama	68,595	33,571	35,024	30,656	14,798	15,858
Mwansambo	23,986	11,817	12,169	10,803	5,263	5,540
Nkhotakota Boma	24,707	12,061	12,646	12,158	5,810	6,348
Ntchisi	224,098	109,349	114,749	104,418	50,769	53,649
Kasakula	14,195	6,867	7,328	6,590	3,153	3,437
Chikho	27,288	13,300	13,988	12,270	5,915	6,355
S/C Nthondo	21,735	10,552	11,183	9,936	4,792	5,144
Kalumo	55,519	26,849	28,670	26,354	12,710	13,644
S/C Chilooko	62,450	30,547	31,903	28,960	14,100	14,860
Malenga	35,099	17,185	17,914	16,371	8,005	8,366
Ntchisi boma	7,812	4,049	3,763	3,937	2,094	1,843

**Annex 2: Population Distribution and Persons aged 18 years and over by Sex, District, TA,
STA and Town, (continued)**

District and TA/STA or Town	Total	Male	Female	Total 18+	Male 18+	Female 18+
Dowa	556,678	272,732	283,946	266,285	129,878	136,407
Dzoole	74,855	36,429	38,426	36,091	17,499	18,592
S/C Chakhazda	120,690	59,561	61,129	57,020	28,101	28,919
S/C Kayembe	83,180	40,807	42,373	38,881	19,029	19,852
Chiwere	81,851	39,605	42,246	38,740	18,389	20,351
S/C Mkukula	76,225	37,578	38,647	37,498	18,570	18,928
Msakambewa	64,300	31,671	32,629	30,932	15,064	15,868
S/C Mponela	35,214	17,054	18,160	16,808	8,067	8,741
Dowa Boma	6,041	2,891	3,150	3,291	1,600	1,691
Mponela Urban	14,322	7,136	7,186	7,024	3,559	3,465
Salima	340,327	166,779	173,548	158,856	76,398	82,458
Maganga	46,418	23,207	23,211	21,666	10,837	10,829
Karonga	55,669	27,390	28,279	25,861	12,460	13,401
Pemba	20,751	9,748	11,003	9,544	4,138	5,406
S/C Kambwiri	28,303	13,832	14,471	12,829	6,107	6,722
Ndindi	35,987	17,180	18,807	16,306	7,425	8,881
S/C Kambalame	15,735	7,567	8,168	7,184	3,311	3,873
Khombedza	68,256	33,493	34,763	31,618	15,265	16,353
S/C Mwanza	20,888	10,203	10,685	9,697	4,675	5,022
Kuluunda	9,012	4,642	4,370	4,192	2,224	1,968
S/C Msosa	6,749	3,307	3,442	3,379	1,696	1,683
Salima Town	27,083	13,522	13,561	13,957	7,004	6,953
Chipoka Urban	5,476	2,688	2,788	2,623	1,256	1,367
Lilongwe	1,228,146	599,955	628,191	580,776	278,845	301,931
Chadza	109,477	52,622	56,855	52,202	24,755	27,447
Kalolo	143,155	70,630	72,525	67,060	32,175	34,885
Chiseka	228,660	111,174	117,486	107,380	50,943	56,437
Mazengera	97,718	47,141	50,577	47,568	22,283	25,285
S/C Chitekwele	37,923	18,229	19,694	17,846	8,195	9,651
Khongoni	100,458	49,470	50,988	46,130	22,457	23,673
Chimutu	88,756	43,715	45,041	42,940	21,084	21,856
Chitukula	28,700	14,073	14,627	13,674	6,535	7,139
S/C Mtema	45,743	22,374	23,369	21,503	10,387	11,116
Kalumbu	55,987	27,094	28,893	26,905	12,630	14,275
S/C Tsabango	31,502	15,565	15,937	14,914	7,408	7,506
Kalumba	23,154	11,137	12,017	11,110	5,324	5,786
Njewa	32,095	16,067	16,028	15,548	7,887	7,661
Malili	91,770	45,077	46,693	42,841	20,949	21,892
Kabudula	113,048	55,587	57,461	53,155	25,833	27,322

**Annex 2: Population Distribution and Persons aged 18 years and over by Sex, District, TA,
STA and Town, (continued)**

District and TA/STA or Town	Total	Male	Female	Total 18+	Male 18+	Female 18+
Lilongwe City	669,021	339,030	329,991	344,995	182,148	162,847
Area 1	13,714	6,936	6,778	7,259	3,867	3,392
Area 2	3,068	1,483	1,585	1,987	919	1,068
Area 3	4,558	2,385	2,173	2,399	1,359	1,040
Area 4	99	64	35	59	37	22
Area 5	764	411	353	351	171	180
Area 6	1,141	625	516	585	360	225
Area 7	40,867	19,188	21,679	20,711	10,395	10,316
Area 8	20,487	10,272	10,215	10,931	5,729	5,202
Area 9	1,878	983	895	1,157	606	551
Area 10	3,220	1,580	1,640	1,896	970	926
Area 11	954	491	463	676	353	323
Area 12	2,321	1,166	1,155	1,466	750	716
Area 13	25	15	10	25	14	11
Area 14	1,154	604	550	765	409	356
Area 15	1,544	664	880	969	467	502
Area 16	-	-	-	-	-	-
Area 17	4	3	1	3	2	1
Area 18	13,438	4,996	8,442	6,980	2,635	4,345
Area 19	-	-	-	-	-	-
Area 20	14	12	2	11	10	1
Area 21	44,965	23,311	21,654	23,841	12,835	11,006
Area 22	29,390	15,021	14,369	15,441	8,271	7,170
Area 23	45,779	23,516	22,263	23,435	12,520	10,915
Area 24	23,944	12,289	11,655	11,917	6,416	5,501
Area 25	64,650	33,164	31,486	34,754	18,741	16,013
Area 26	4,799	2,356	2,443	2,237	1,062	1,175
Area 27	2,249	1,125	1,124	1,109	572	537
Area 28	48	43	5	46	42	4
Area 29	547	302	245	336	193	143
Area 30	2,344	1,153	1,191	1,173	596	577
Area 32	350	197	153	266	168	98
Area 33	2,545	1,119	1,426	1,951	829	1,122
Area 34	42	19	23	10	8	2
Area 35	7,455	3,808	3,647	3,782	2,049	1,733
Area 36	45,991	23,725	22,266	22,677	12,161	10,516
Area 37	567	277	290	334	180	154
Area 38	9,867	4,932	4,935	4,637	2,392	2,245
Area 39	4,789	2,529	2,260	2,316	1,238	1,078
Area 40	8	5	3	4	3	1

Annex 2: Population Distribution and Persons aged 18 years and over by Sex, District, TA, STA and Town,

District and TA/STA or Town	Total	Male	Female	Total 18+	Male 18+	Female 18+
Lilongwe City 'Continued'						
Area 41	-	-	-	-	-	-
Area 42	13	8	5	7	5	2
Area 43	2,290	1,213	1,077	1,346	701	645
Area 44	26,274	13,541	12,733	12,602	6,777	5,825
Area 45	170	102	68	95	54	41
Area 46	3,189	1,619	1,570	1,569	829	740
Area 47	8,242	4,249	3,993	5,380	2,820	2,560
Area 49	26,001	13,137	12,864	14,421	7,510	6,911
Area 50	26,990	14,019	12,971	13,510	7,345	6,165
Area 51	13,583	7,515	6,068	7,163	4,329	2,834
Area 52	3,323	1,657	1,666	1,640	836	804
Area 53	19,453	9,729	9,724	10,103	5,171	4,932
Area 54	4,489	2,163	2,326	2,198	1,040	1,158
Area 55	13,545	6,637	6,908	6,434	3,116	3,318
Area 56	36,786	19,264	17,522	17,995	9,931	8,064
Area 57	60,617	31,258	29,359	29,458	15,921	13,537
Area 58	24,477	12,150	12,327	12,578	6,434	6,144
Mchinji	456,558	227,373	229,185	208,643	103,887	104,756
Mlonyeni	37,179	18,803	18,376	17,741	8,918	8,823
S/C Mavwere	90,359	44,749	45,610	42,312	20,649	21,663
Zulu	91,363	45,272	46,091	41,735	20,891	20,844
S/C Nduwa	82,018	40,529	41,489	36,078	17,742	18,336
Mkanda	84,927	42,513	42,414	38,716	19,420	19,296
S/C Dambe	54,260	27,416	26,844	23,760	12,040	11,720
Mchinji Boma	16,452	8,091	8,361	8,301	4,227	4,074
Dedza	623,789	297,676	326,113	295,068	134,293	160,775
Pemba	131,840	62,809	69,031	63,524	29,020	34,504
S/C Chilikumwenda	60,961	29,193	31,768	29,097	13,556	15,541
S/C Kaphuka	134,459	64,360	70,099	63,868	29,210	34,658
Tambala	62,107	28,801	33,306	28,694	12,118	16,576
S/C Chauma	20,874	9,819	11,055	9,779	4,258	5,521
Kasumbu	71,128	33,526	37,602	32,864	14,312	18,552
Kachindamoto	93,808	45,525	48,283	42,910	20,262	22,648
S/C Kamenya Gwaza	28,237	13,476	14,761	13,688	6,116	7,572
Dedza Town	20,375	10,167	10,208	10,644	5,441	5,203
Ntcheu	474,464	226,567	247,897	227,134	103,440	123,694
Phambala	55,168	26,634	28,534	26,336	12,194	14,142
Mpando	50,528	24,726	25,802	22,816	10,566	12,250
Kwataine	41,338	19,594	21,744	20,528	9,172	11,356
S/C Makwangwala	85,173	40,248	44,925	41,029	18,320	22,709
S/C Champiti	15,790	7,668	8,122	7,670	3,583	4,087
Njolomole	54,527	25,541	28,986	26,768	11,774	14,994
Chakhumbira	25,659	12,141	13,518	12,458	5,521	6,937
S/C Goodson Ganya	106,910	50,831	56,079	49,972	22,610	27,362
Masasa	24,691	11,865	12,826	11,689	5,421	6,268
Ntcheu Boma	14,680	7,319	7,361	7,868	4,279	3,589

**Annex 2: Population Distribution and Persons aged 18 years and over by Sex, District, TA,
STA and Town, (continued)**

District and TA/STA or Town	Total	Male	Female	Total 18+	Male 18+	Female 18+
Southern Region	5,876,784	2,845,764	3,031,020	2,807,362	1,321,933	1,485,429
Mangochi	803,602	387,072	416,530	370,500	170,248	200,252
Mponda	109,399	52,960	56,439	50,994	23,708	27,286
Chimwala	109,261	52,796	56,465	49,233	22,663	26,570
Nankumba	121,328	60,295	61,033	56,214	27,552	28,662
Jalasi	74,616	35,017	39,599	34,691	15,163	19,528
S/C M'bwana Nyambi	81,296	39,117	42,179	36,506	16,577	19,929
S/C Chowe	110,230	52,389	57,841	50,407	22,571	27,836
Katuli	52,424	24,820	27,604	24,916	10,999	13,917
Makanjila	68,396	32,623	35,773	31,345	14,138	17,207
S/C Namabvi	31,111	14,771	16,340	14,322	6,210	8,112
Lake Malawi National Park	233	102	131	106	50	56
Mangochi Town	39,369	19,339	20,030	19,073	9,399	9,674
Monkey Bay Urban	5,939	2,843	3,096	2,693	1,218	1,475
Machinga	488,996	234,747	254,249	224,339	103,487	120,852
Liwonde	81,674	38,876	42,798	37,400	16,908	20,492
S/C Sitola	39,042	18,442	20,600	18,122	8,190	9,932
Kawinga	111,368	53,364	58,004	50,513	23,332	27,181
S/C Chamba	21,496	10,290	11,206	10,164	4,640	5,524
S/C Mposa	21,870	10,709	11,161	10,426	4,992	5,434
S/C Mlomba	40,861	19,529	21,332	18,583	8,643	9,940
S/C Chikweo	52,826	25,466	27,360	23,178	10,577	12,601
S/C Ngokwe	25,836	12,509	13,327	11,281	5,220	6,061
S/C Chiwalo	19,461	9,253	10,208	9,147	4,152	4,995
Nyambi	48,824	23,707	25,117	22,745	10,649	12,096
Liwonde National Park	1,236	613	623	538	267	271
Machinga Boma	1,228	618	610	594	289	305
Liwonde Town	23,274	11,371	11,903	11,648	5,628	6,020

Annex 2: Population Distribution and Persons aged 18 years and over by Sex, District, TA, STA and Town, (continued)

District and TA/STA or Town	Total	Male	Female	Total 18+	Male 18+	Female 18+
Zomba Rural	583,167	279,489	303,678	276,396	127,749	148,647
Kuntumanji	72,889	35,072	37,817	34,479	15,897	18,582
Mwambo	116,083	55,714	60,369	54,887	25,563	29,324
S/C Mkumbira	4,858	2,881	1,977	2,744	1,752	992
Chikowi	57,389	27,302	30,087	27,620	12,625	14,995
S/C Mbiza	137,761	66,314	71,447	65,165	30,079	35,086
Mlumbe	133,502	63,626	69,876	63,034	28,567	34,467
Malemia	60,685	28,580	32,105	28,467	13,266	15,201
Zomba City	87,366	44,670	42,696	46,240	24,657	21,583
Mbedza Ward	4,204	2,269	1,935	2,231	1,167	1,064
Mtiya Ward	9,884	5,883	4,001	5,807	3,938	1,869
Masongola Ward	834	392	442	503	232	271
Chikamveka Ward	2,840	1,476	1,364	1,648	867	781
Chikamveka North Ward	13,738	6,778	6,960	6,817	3,468	3,349
Chirunga East Ward	7,075	3,433	3,642	3,796	1,874	1,922
Chirunga Ward	3,276	1,866	1,410	1,819	1,107	712
Likangala Ward	12,703	6,416	6,287	6,503	3,446	3,057
Zakazaka Ward	6,360	3,139	3,221	2,989	1,559	1,430
Zomba Central Ward	2,572	1,268	1,304	1,520	746	774
Chambo Ward	5,527	2,550	2,977	3,323	1,464	1,859
Sadzi Ward	9,222	4,660	4,562	4,807	2,499	2,308
Likangala Central Ward	7,605	3,816	3,789	3,707	1,907	1,800
Likangala South Ward	1,526	724	802	770	383	387
Chiradzulu	290,946	137,194	153,752	141,584	63,104	78,480
Mpama	57,910	27,064	30,846	28,202	12,670	15,532
Likoswe	57,273	27,163	30,110	28,383	12,970	15,413
Kadewere	78,154	36,855	41,299	37,916	16,699	21,217
Nkalo	42,175	19,811	22,364	20,469	8,903	11,566
Chitera	18,705	8,929	9,776	8,826	3,945	4,881
Nchema	34,402	16,256	18,146	16,590	7,348	9,242
Chiradzulu	2,327	1,116	1,211	1,198	569	629

**Annex 2: Population Distribution and Persons aged 18 years and over by Sex, District, TA,
STA and Town, (continued)**

District and TA/STA or Town	Total	Male	Female	Total 18+	Male 18+	Female 18+
Blantyre Rural	338,047	164,546	173,501	163,952	77,806	86,146
Kapeni	72,567	35,577	36,990	35,926	17,308	18,618
Lundu	25,923	12,464	13,459	12,362	5,721	6,641
Chigaru	39,893	19,106	20,787	18,675	8,671	10,004
Kunthembwe	34,296	16,633	17,663	15,974	7,474	8,500
Makata	16,221	7,785	8,436	7,629	3,487	4,142
Kuntaja	71,912	35,342	36,570	35,661	17,298	18,363
Machinjili	16,133	7,878	8,255	8,097	3,759	4,338
Somba	61,102	29,761	31,341	29,628	14,088	15,540
Blantyre City	661,444	337,655	323,789	344,513	181,715	162,798
Michiru Ward	48,375	24,674	23,701	25,377	13,358	12,019
South Lunzu Ward	38,290	19,093	19,197	20,465	10,436	10,029
Mapanga Ward	23,094	12,036	11,058	11,767	6,249	5,518
Nkolokoti Ward	35,348	18,126	17,222	17,848	9,417	8,431
Ndirande North Ward	32,795	17,299	15,496	16,441	8,875	7,566
Ndirande South Ward	64,431	33,412	31,019	34,153	18,463	15,690
Ndirande West Ward	16,160	8,324	7,836	8,893	4,849	4,044
Nyambadwe Ward	9,729	5,171	4,558	4,869	2,641	2,228
Likhubula Ward	51,761	26,304	25,457	26,913	14,193	12,720
Chilomoni Ward	37,982	18,975	19,007	18,990	9,694	9,296
Blantyre West Ward	23,022	11,772	11,250	12,505	6,608	5,897
Blantyre Cenral Ward	4,863	2,430	2,433	3,053	1,564	1,489
Blantyre East Ward	5,792	3,302	2,490	4,043	2,792	1,251
Chichiri Ward	5,539	2,921	2,618	3,498	1,965	1,533
Mzedi Ward	13,324	6,824	6,500	6,628	3,436	3,192
Bangwe Ward	34,611	17,522	17,089	17,313	8,955	8,358
Namiyango Ward	18,844	9,548	9,296	9,791	5,140	4,651
Limbe East Ward	38,632	19,889	18,743	20,685	10,990	9,695
Limbe Central Ward	3,026	1,514	1,512	1,958	985	973
Limbe West Ward	13,549	6,961	6,588	6,780	3,557	3,223
Soche East Ward	14,610	7,122	7,488	7,298	3,637	3,661
Soche West Ward	44,819	22,696	22,123	22,414	11,596	10,818
Nancholi Ward	24,997	12,427	12,570	12,863	6,772	6,091
Misesa Ward	31,539	16,243	15,296	16,750	8,979	7,771
Chigula Ward	21,936	10,992	10,944	11,097	5,599	5,498
Msamba Ward	4,376	2,078	2,298	2,121	965	1,156

**Annex 2: Population Distribution and Persons aged 18 years and over by Sex, District, TA,
STA and Town, (continued)**

District and TA/STA or Town	Total	Male	Female	Total 18+	Male 18+	Female 18+
Mwanza	94,476	45,672	48,804	44,184	20,746	23,438
Kanduku	35,816	17,046	18,770	16,136	7,311	8,825
Nthache	44,109	21,216	22,893	20,201	9,287	10,914
Mwanza Boma	14,551	7,410	7,141	7,847	4,148	3,699
Thyolo	587,455	279,979	307,476	280,441	128,095	152,346
Nsabwe	35,056	16,433	18,623	15,905	6,914	8,991
S/C Thukuta	15,114	6,919	8,195	6,886	2,904	3,982
S/C Mbawela	40,868	19,018	21,850	18,506	8,023	10,483
Changata	36,996	17,251	19,745	16,788	7,295	9,493
S/C Mphuka	49,296	23,552	25,744	23,413	10,861	12,552
S/C Kwethemule	48,058	22,831	25,227	23,774	10,724	13,050
Kapichi	49,655	23,276	26,379	23,456	10,276	13,180
Nchilamwela	56,613	27,266	29,347	28,272	13,444	14,828
Chimaliro	112,151	53,633	58,518	54,146	24,773	29,373
Bvumbwe	93,160	45,364	47,796	45,146	21,494	23,652
Thomas	32,241	15,378	16,863	14,699	6,753	7,946
Thyolo Boma	7,496	3,544	3,952	3,949	1,758	2,191
Luchenza Town (Part A)	10,751	5,514	5,237	5,501	2,876	2,625
Mulanje	525,429	247,391	278,038	253,003	112,911	140,092
Mabuka	156,550	73,884	82,666	75,976	33,920	42,056
Laston Njema	64,313	30,748	33,565	31,007	14,300	16,707
Chikumbu	73,304	33,483	39,821	35,098	14,948	20,150
Nthiramanja	41,900	19,275	22,625	20,777	8,858	11,919
Nkanda	93,781	44,109	49,672	44,495	19,658	24,837
S/C Juma	79,800	37,839	41,961	37,790	17,164	20,626
Mulanje Boma	15,781	8,053	7,728	7,860	4,063	3,797
Phalombe	313,227	149,471	163,756	145,851	66,617	79,234
Mnkhumba	207,797	98,989	108,808	96,962	44,036	52,926
Nazombe	69,201	32,855	36,346	32,459	14,797	17,662
Chiwalo	31,488	15,436	16,052	14,102	6,586	7,516
Phalombe Boma	4,741	2,191	2,550	2,328	1,198	1,130

Annex 2: Population Distribution and Persons aged 18 years and over by Sex, District, TA, STA and Town, (continued)

District and TA/STA or Town	Total	Male	Female	Total 18+	Male 18+	Female 18+
Chikwawa	438,895	217,981	220,914	208,078	102,155	105,923
Ngabu	144,801	71,661	73,140	68,412	33,434	34,978
Lundu	47,549	25,038	22,511	23,468	12,844	10,624
Chapananga	87,844	42,862	44,982	39,894	18,681	21,213
Maseya	26,753	13,381	13,372	12,871	6,386	6,485
Katunga	25,002	12,176	12,826	12,036	5,780	6,256
Kasisi	31,033	15,278	15,755	14,871	7,130	7,741
Mankhwira	61,354	29,888	31,466	29,000	13,799	15,201
Lengwe National Park	50	34	16	35	23	12
Chikwawa Boma	6,998	3,801	3,197	3,665	2,056	1,609
Ngabu Urban	7,511	3,862	3,649	3,826	2,022	1,804
Nsanje	238,089	115,371	122,718	111,209	51,718	59,491
Ndamera	26,957	12,931	14,026	12,411	5,624	6,787
Chimombo	10,244	4,884	5,360	4,856	2,137	2,719
Nyachikadza	3,675	1,811	1,864	1,715	823	892
Mlolo	57,075	27,428	29,647	26,810	12,294	14,516
Tengani	34,529	16,881	17,648	15,900	7,455	8,445
S/C Mbenje	43,768	21,546	22,222	20,337	9,805	10,532
Malemia	18,333	8,840	9,493	8,596	4,039	4,557
Ngabu	10,900	5,238	5,662	5,208	2,344	2,864
S/C Makoko	6,659	2,946	3,713	2,785	1,074	1,711
Mwabvi Game Reserve	6,229	3,100	3,129	2,703	1,307	1,396
Nsanje	19,720	9,766	9,954	9,888	4,816	5,072
Balaka	316,748	151,637	165,111	147,195	67,283	79,912
Nsamala	173,399	83,159	90,240	80,597	36,947	43,650
Kalemebo	121,246	57,623	63,623	55,396	24,721	30,675
Balaka Boma	22,103	10,855	11,248	11,202	5,615	5,587
Neno	108,897	52,889	56,008	49,877	23,642	26,235
Dambe	25,334	12,102	13,232	11,298	5,100	6,198
Mlauli	24,671	12,009	12,662	11,193	5,316	5,877
Symon	39,315	19,346	19,969	18,311	8,840	9,471
Chekucheku	17,909	8,579	9,330	8,240	3,942	4,298
Neno Boma	1,668	853	815	835	444	391

Annex 3: Census Questionnaire