



# Conducting Migration Research

*By: C. Sanford Wesseh*

# Presentation Outline

- ▶ Basic Research Design
- ▶ Data quality
- ▶ Data analysis

# Basic Research Design

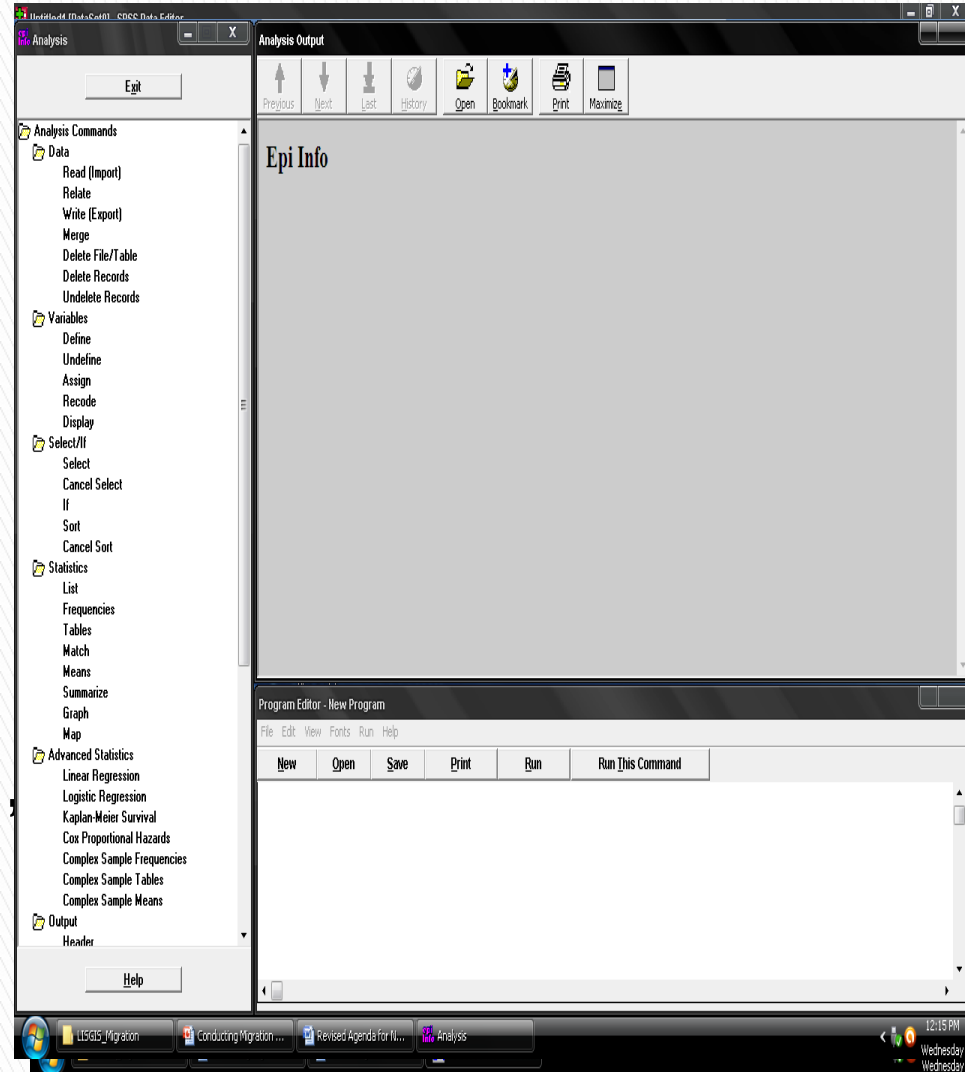
- ▶ Selection of research topic or theme
- ▶ Design of research protocol (e.g., topic/area, objectives and rationale, methodology, instruments/tools, duration, targeted audience or participants, confidential issues, etc)
- ▶ Type of research (e.g., Qualitative, quantitative or biomedical research)
- ▶ Research tools/instruments (e.g., questionnaires, training manuals, field staff TORs, presentations, etc)
- ▶ Key questions
  - questions on household or respondent characteristics (age, sex, education, marital status, fertility, etc)
  - Place of birth and place of usual residence (legal or de facto)
  - Duration/time spent in current residence
  - Purpose or reason(s) for movement
  - Profession

# Data Quality

- ▶ Good research design (e.g., type of research, questionnaire, clear and concise questions, short investigation period, etc)
- ▶ Capacity (e.g., field staff, logistics, resources, etc)
- ▶ Field staff selection and training
- ▶ Selection of samples and targeted participants
- ▶ Community entry
- ▶ Administration of questionnaire
- ▶ Questionnaire management
- ▶ Data entry

# Data Analysis

- ▶ Accurate and complete data
- ▶ Select the appropriate software or techniques (e.g., Mortpak, SPSS, EPI Info, CPro, Stata, etc)
- ▶ Select the appropriate indicators for analysis
- ▶ Present key findings using right channel (e.g., graphs, tables, maps, etc)



*Thanks for Attention!!!!*