

PUBLIC PERCEPTIONS LABORATORY ON MIGRATION

January 2023

Interamerican Development Bank

Migration Unit



A region in movement

- **Flows from Venezuela**
- **Return migration to the North of Central America**
- **Diaspora**
- **Migrant caravan**
- **Secondary migrants**

75

MILLIONS
OF MIGRANTS



MIGRATION UNIT

NON REIMBURSABLE RESOURCES

TECHNICAL COOPERATION

RESOURCE MOBILIZATION

INTEGRAL VIEW

KNOWLEDGE AND DATA

BELIZE
Education

PANAMA
Education

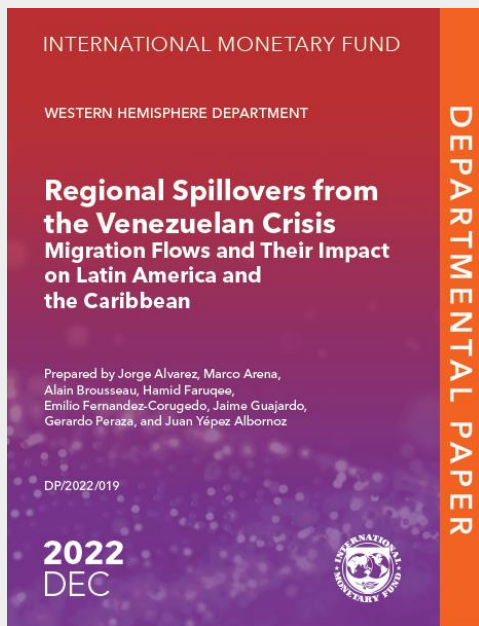
ECUADOR
Social services

COLOMBIA
Employment
Socio-economic
integration
Water and sanitation
Social services

CHILE
Housing

URUGUAY
Gender based
violence
protection

Venezuelan Migration

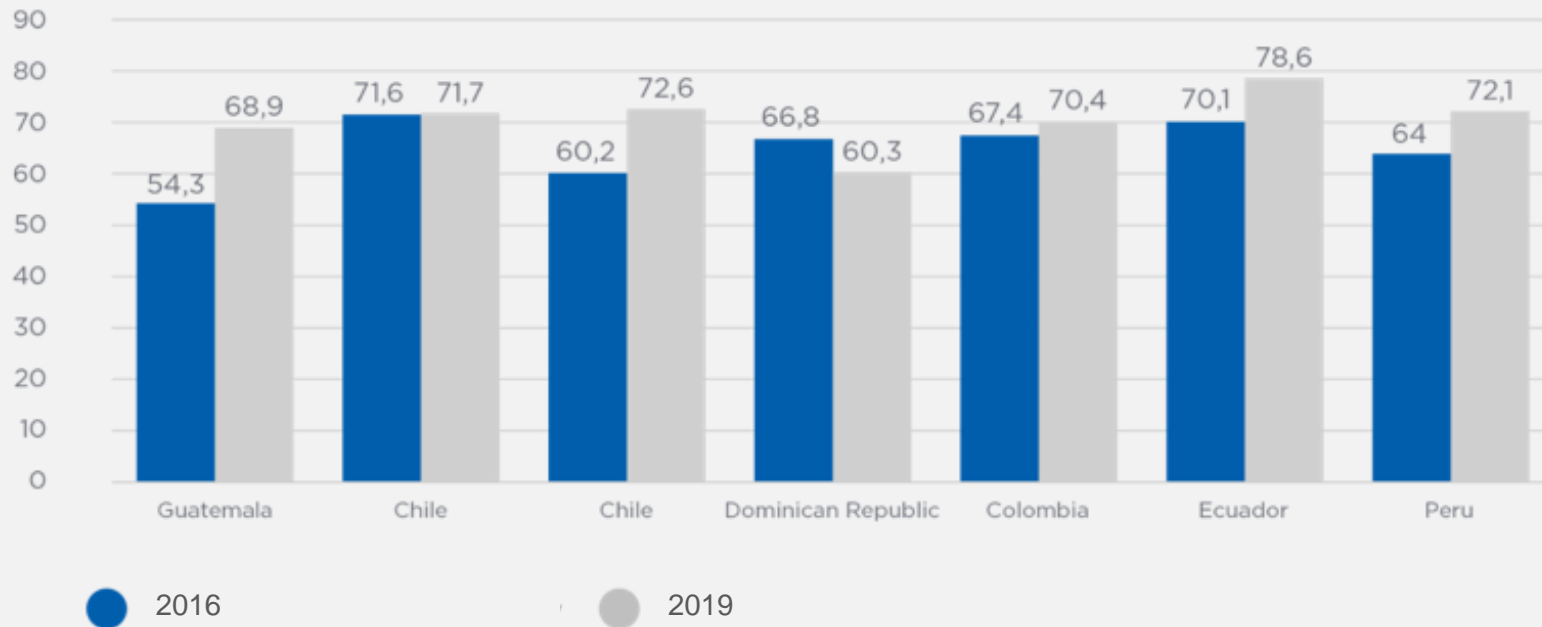


0,1% - 0,25% GDP

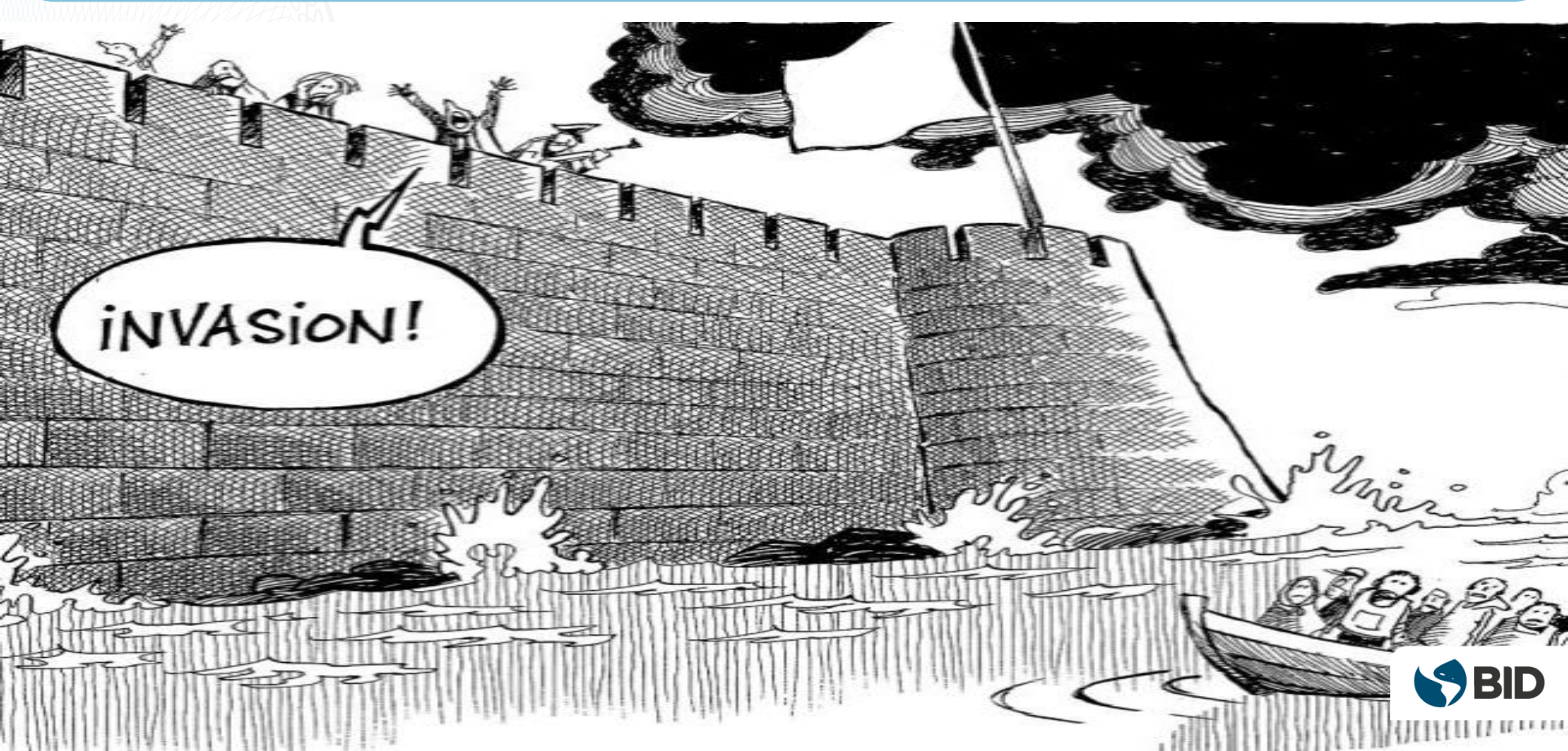
Main host countries



Migrant Acceptance Index 2016 - 2019



Myths and false believes



Social exclusion has costs for migrant populations...

But also, for receiving communities.

1. Lower socio-economic integration

2. Fiscal impacts

3. Lower economic growth

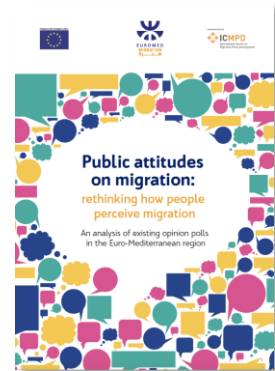
4. Intragroup violence

5. Trust

Latin American
Public Opinion Project

LAPOP

Proyecto de Opinión
Pública de América Latina

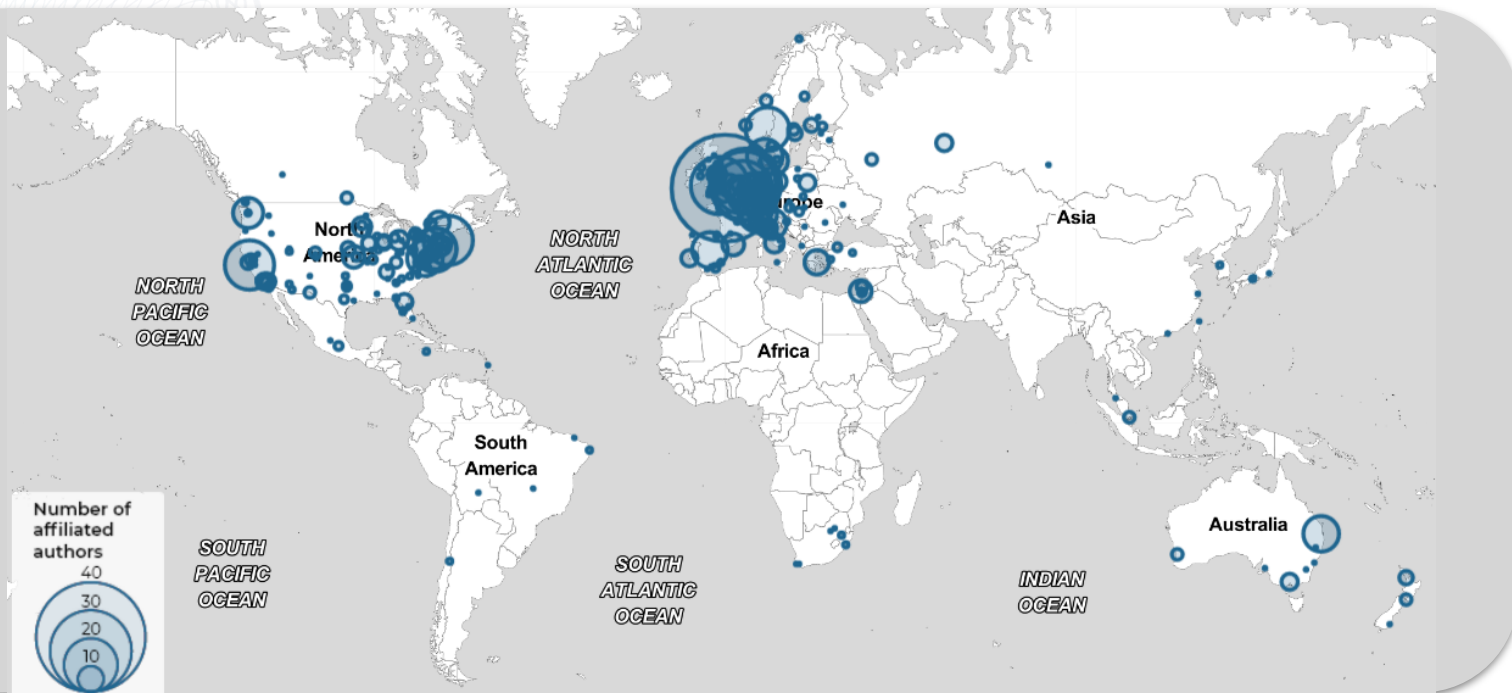


OBSERVATORIO SOBRE
RACISMO, XENOFOBIA Y ODIO

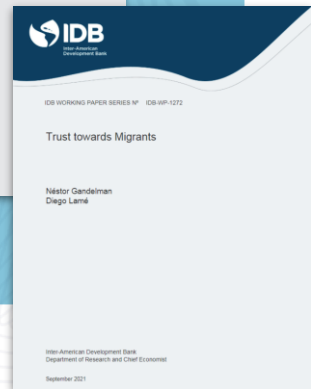
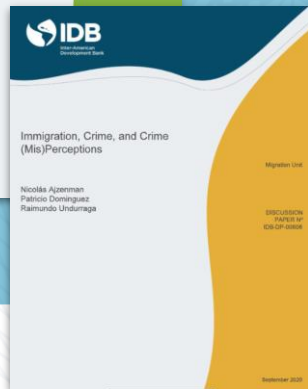
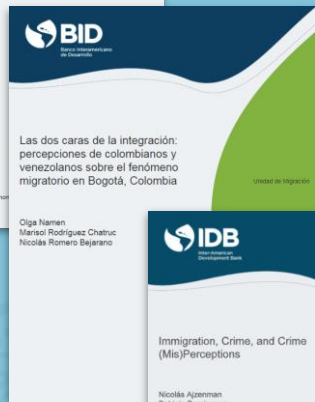
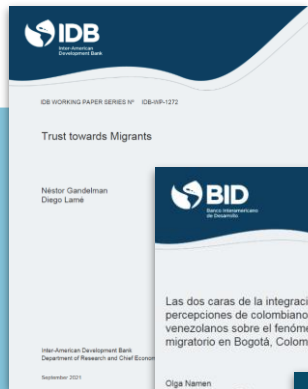
cerodio



We need more information



Source: Research on Public Attitudes to Migration: What, Where and by Who? (OPAM)



LET'S CHANGE THE NARRATIVE

Citizen Perception Laboratory on Migration

The Citizen Perception Laboratory on Migration offers information, resources and tools to accompany governments in their response to xenophobia



Public Perceptions Laboratory on Migration

Experiments on changing attitudes and behaviors



Repository of studies and best practices on perceptions and migration



Public Perceptions Laboratory on Migration

Analysis and visualization of social media conversation on migration



Analysis and visualization of regional public opinion surveys



Public Perceptions Laboratory on Migration

What's the volume of the conversation online?

Conversation



What do people talk about on social media?

Conversation



The conversation about migration on LAC

26 countries and cities



Migratory sentiment

¿How's the sentiment towards migration on social media?



Communities

How's the experience of migrant populations?

Public Perceptions Laboratory on Migration



LET'S CHANGE THE NARRATIVE

Citizen Perception Laboratory on Migration

The Citizen Perception Laboratory on Migration offers information, resources and tools to accompany governments in their response to xenophobia

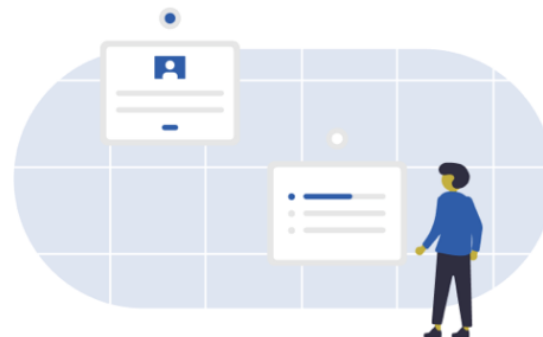


The perception of migration in Latin

What is the region feeling?

The most comprehensive analysis of migration surveys in Latin America and the Caribbean.

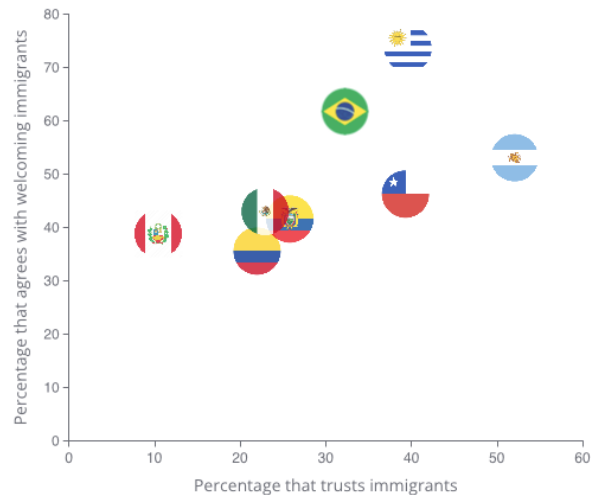
[DOWNLOAD THE LATEST REPORT](#)



General Feelings on migration and migrant people

Recently, there is a general tendency in the region to reject migration and migrant people. Regional surveys show that a significant percentage of native people do not feel comfortable having immigrants as their neighbors or even receiving them in their country. In fact, they are inclined to mistrust immigrants. It is not surprising that the subregions that present a more marked tendency towards rejection of migration are those that have received massive flows of migrants in a short period of time. For example, the Andean region after the growing migration from Venezuela.

Source: *World Values Survey (2017 - 2020, 2010 - 2014, 2005 - 2009), Latinobarómetro (2020)*



What is social media saying?

We monitor and analyze the conversation on social networks and the media about migration in 26 countries in the region.

[DOWNLOAD THE LATEST REPORT](#)

Source: Citizen Perception Laboratory on Migration, Inter-American Development Bank, 2023



Search by country

Latin America and the Caribbean ▾

Latin America and the Caribbean

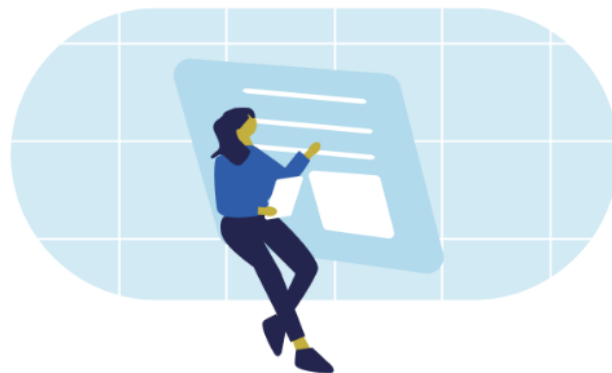
 Conversation

 Migratory Sentiment

 Xenophobia

From knowledge to action

What works and what doesn't in order to change people's perceptions of migration? We researched, analyzed and ran experiments to learn the best strategies for building a positive narrative on migration.



Un Mundo Mejor para Migrantes en América Latina y el Caribe

Las actitudes de la población local hacia la migración influyen en el diseño de la política migratoria y en la integración socioeconómica de las personas migrantes. La cohesión social en las comunidades de acogida es fundamental para el aprovechamiento de los beneficios potenciales de la migración. El BID, en conjunto con el PNUD, ha implementado una intervención, en la forma de videos, en nueve países de América Latina y el Caribe, que busca influir y modificar las percepciones y actitudes de la población local hacia la migración.

Researchers: BID y PNUD

Country: Barbados, Colombia, Costa Rica, Chile, Ecuador, México, Perú, República Dominicana, Trinidad y Tobago

Program Area: América Latina

Topics: Comportamiento, Preferencias y Migración

Status: En curso

Resources

BID PUBLICATIONS

EXTERNAL PUBLICATIONS

LABORATORIES AND OBSERVATORIES

DATABASES

Search by key word, country or region

Search

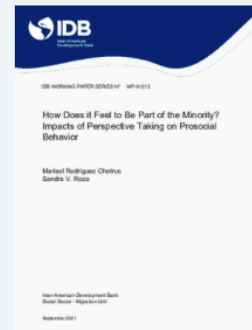


2021

Trust towards Migrants

Gandelman, Néstor; Lamé, Diego

[SEE MORE](#)



2021

How Does it Feel to Be Part of the Minority?: Impacts of Perspective Taking on Prosocial Behavior

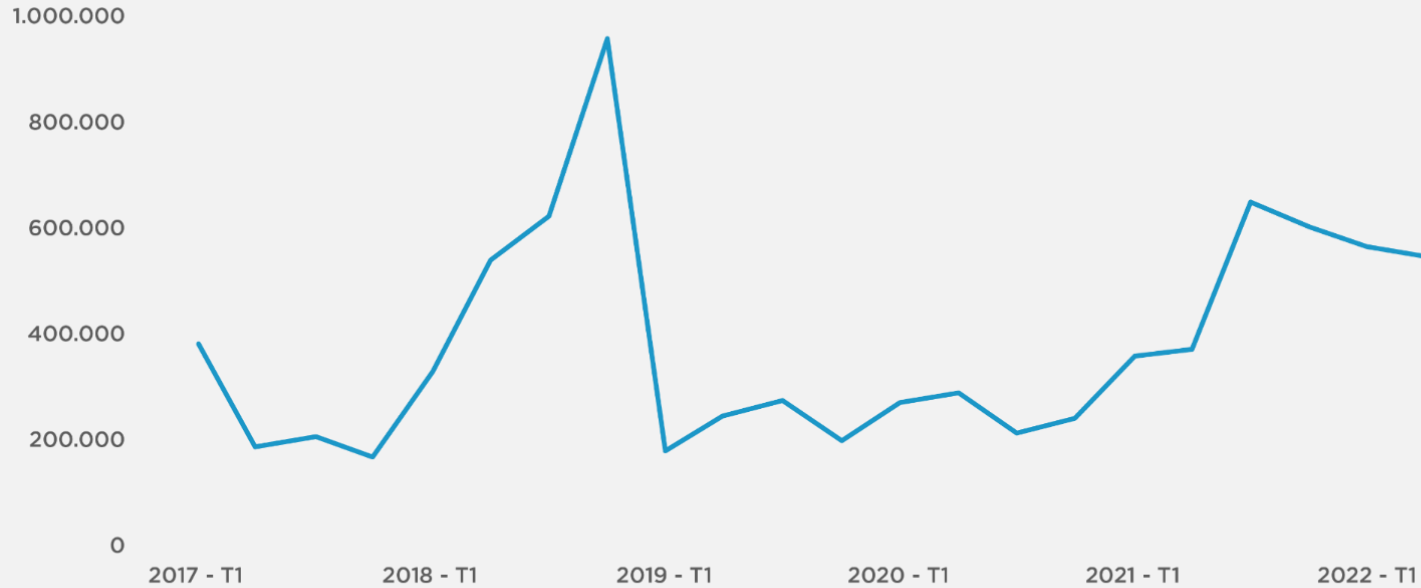
Rodríguez Chatruc, Marisol; Roza, Sandra

[SEE MORE](#)

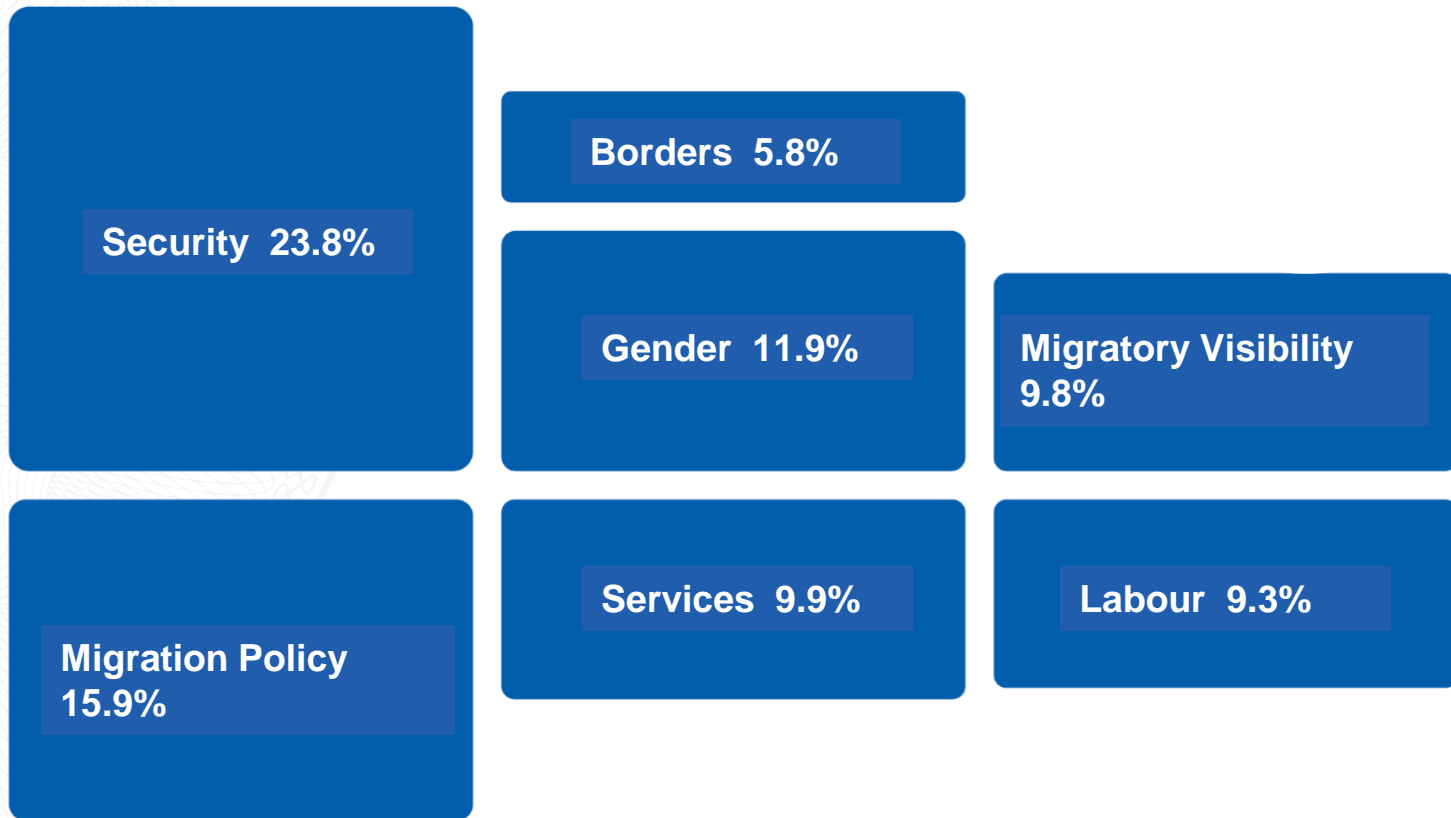
Final Conclusions



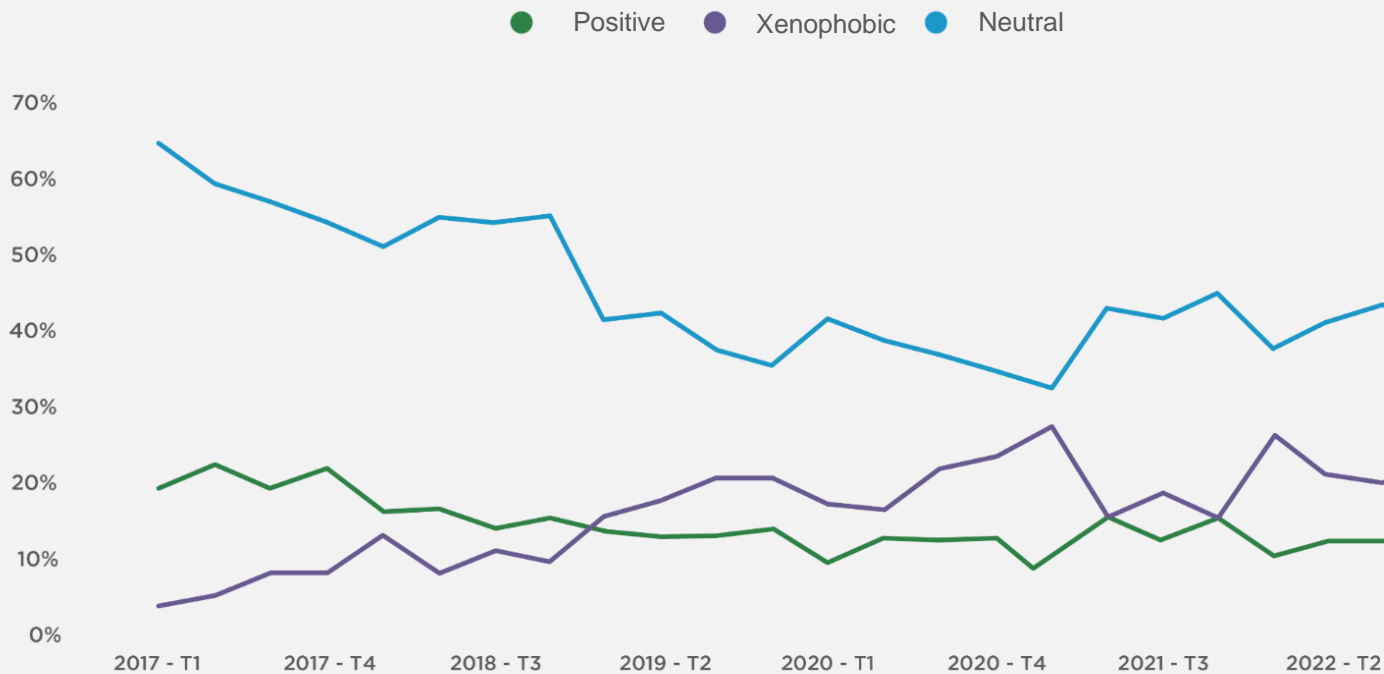
The conversation on migration is increasing



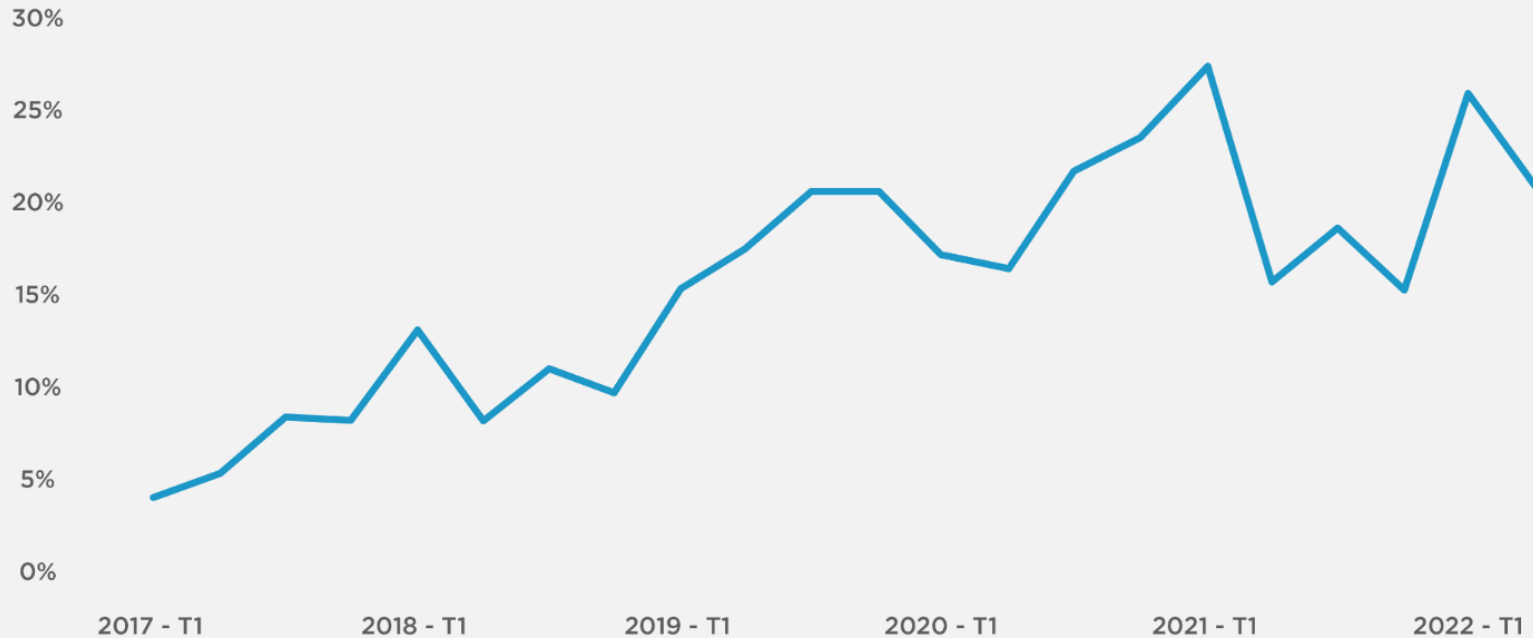
There are themes that matter more than others...



Evolution of sentiment about migration on Twitter

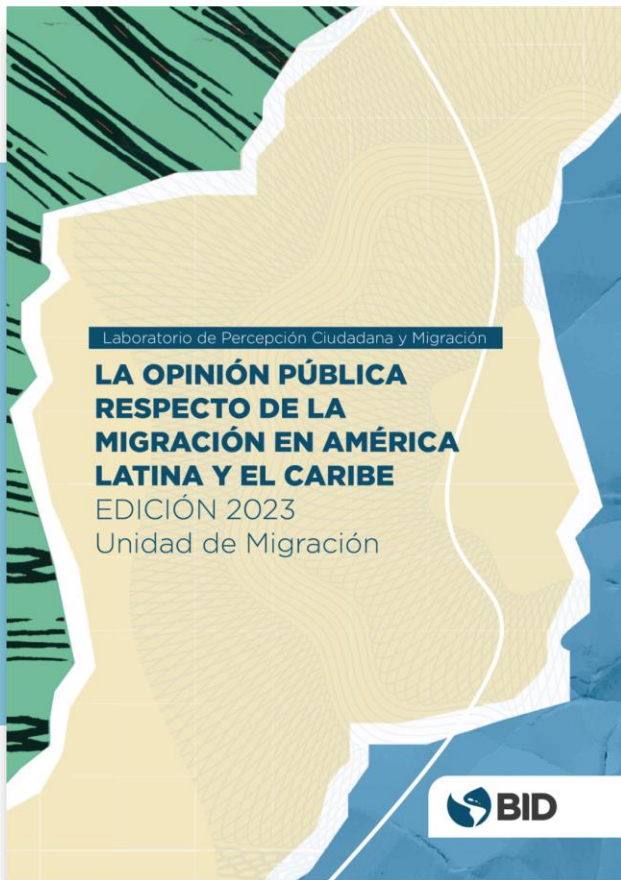


Xenophobic conversation on Twitter



A stylized, monochromatic illustration in shades of blue and white. It depicts a person standing behind a typewriter, with a large satellite dish visible in the background. The scene is set against a dark blue gradient background.

But we can change the narrative



Laboratorio de Percepción Ciudadana y Migración

**LA OPINIÓN PÚBLICA
RESPECTO DE LA
MIGRACIÓN EN AMÉRICA
LATINA Y EL CARIBE**

EDICIÓN 2023
Unidad de Migración





<https://laboratoriomigracion.iadb.org/>

Thank you!

