

Forced displacement within the ECOWAS region: Management of statistics on refugees and IDPs

Jean-Pierre Ntezimana
Statistics Sweden

25 January 2023

Context



- ECOWAS Population in 2020 = 397,2 millions inhabitants
- Population Density = 78 Habitants/Km²
- Official languages: English, French and Portuguese
- Member states: Benin, Burkina Faso, Cabo Verde, Côte d'Ivoire, Gambia, Ghana, Guinea, Guinea Bissau, Liberia, Mali, Niger, Nigeria, Senegal, Sierra Leone, Togo

ECOWAS partners in the field of migration statistics



- Statistics Sweden (SCB)
- International Organization for Migration (IOM)
- International Labour Organisation (ILO)
- Expert Group on Refugee, IDP and Statelessness Statistics (EGRISS)

ECOWAS COMMON APPROACH ON MIGRATION

What ECOWAS *Common Approach on Migration* is about:

- Promote a coherent and comprehensive view of Migration within the ECOWAS Region
- Manage coherently the various aspects and impact of migration
- Promote migration management as a tool of regional integration and development process

Areas of cooperation on Migration Data:

- Strengthen capacities to collect and manage data
- Strengthen cooperation of involved stakeholders
- Establish working networks to share data and information and facilitate assistance



Regional Support

- Support ECOWAS Commission



Workshop on migration data collection and management in the ECOWAS region



Participation of ECOWAS in international events related to migration data



Build capacities in migration data management



Creating tools of reference for migration data collection and management

National Support

Support National Statistical Institutes and Governmental stakeholders

Data

- Support development of national Migration Profiles

Coordination

- Support MS in reinforcing coordination on Migration Data

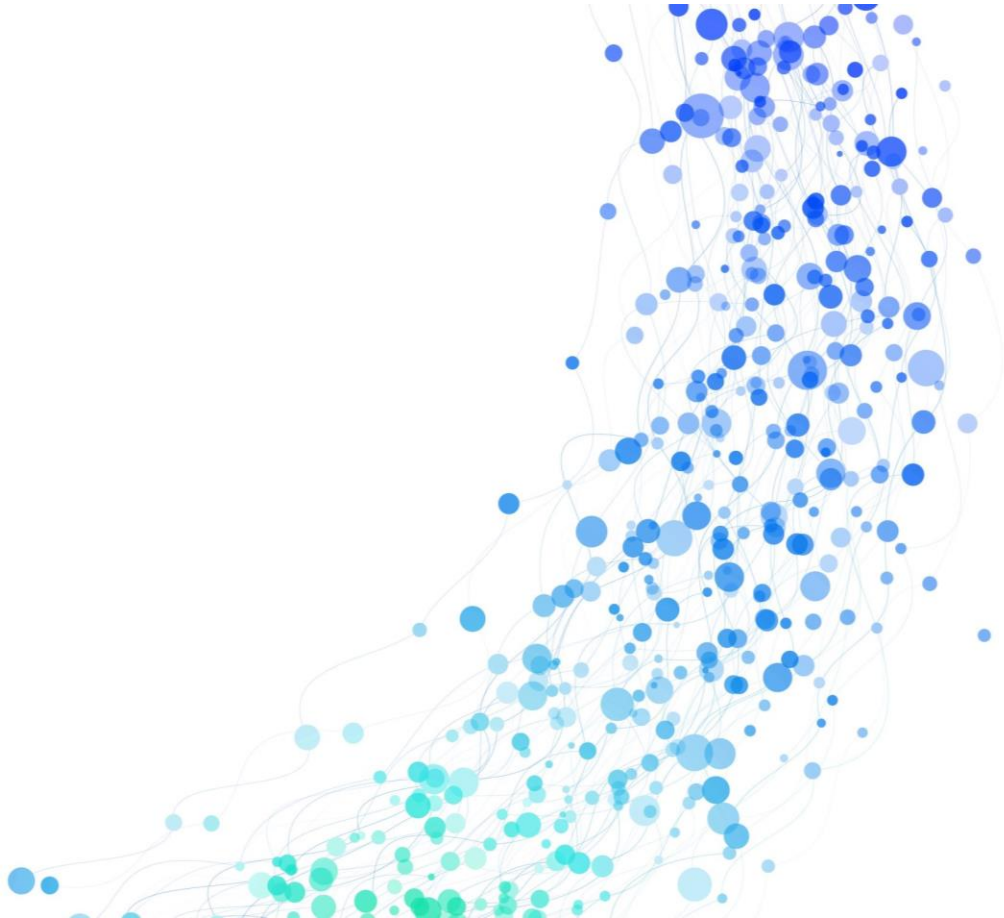
Analysis

- Support MS in analysing census data related to migration

Capacity

- Support National Statistical Institutes to build capacities on Migration Data

Context on data



- Migratory movements in the West African region are characterized by multiple factors, with a high number of migrants, refugees and other populations forcibly displaced.
- First Regional Migration Indicators report in 2018: Migration in West Africa is highly intra regional.

First regional indicators report on migration in West Africa, 2018

- Migratory movement
 - Inflow and Outflow = 2,12 millions and most are male (67,87 %)
- Immigrants > 5,46 millions
 - ECOWAS Intra immigration: 83,70 %
- Emigrants > 4,70 millions.
 - ECOWAS Intra Emigrants: 64,70 %



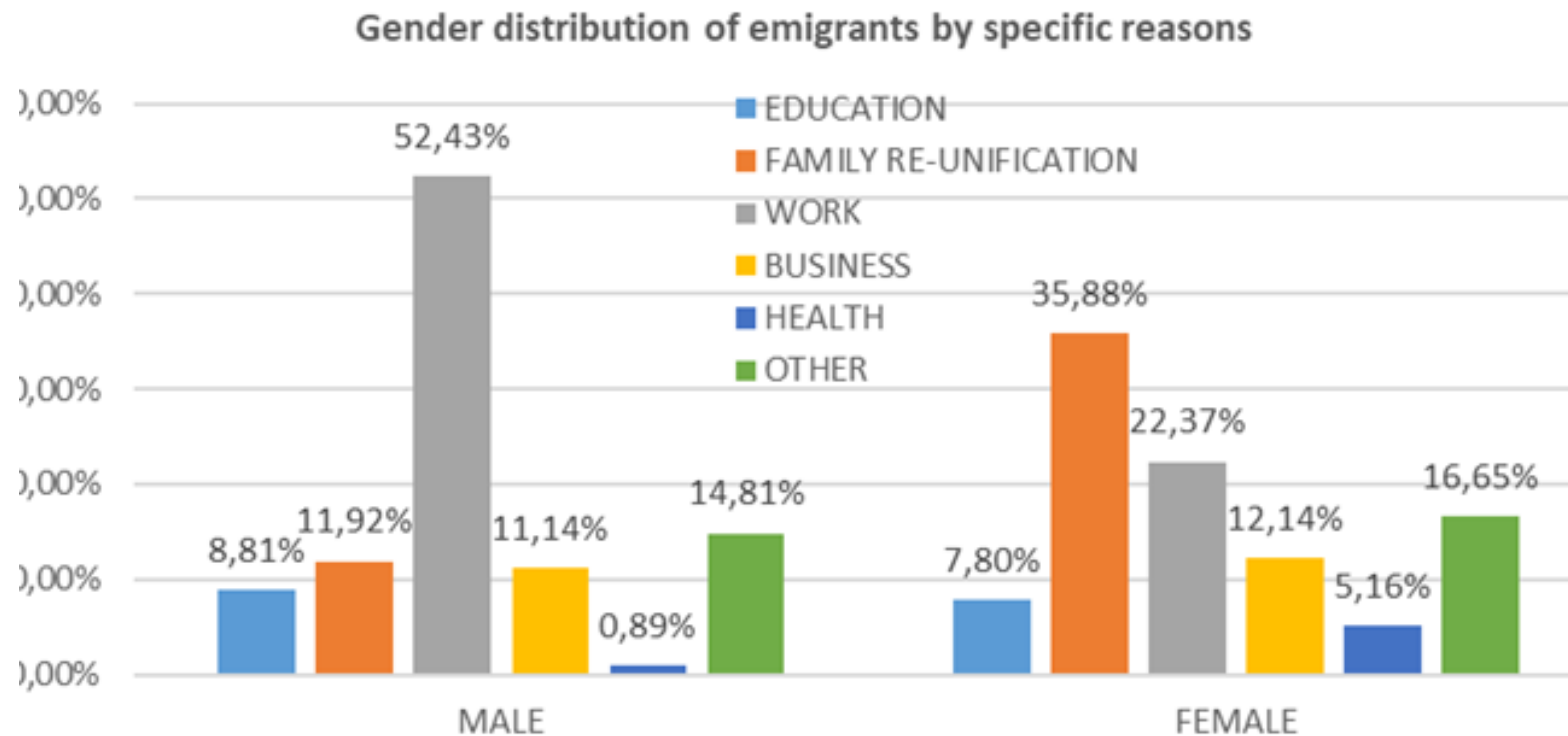
ECOWAS COMMISSION
COMMISSION DE LA CEDEAO
COMISSÃO DA CEDEAO

REGIONAL MIGRATION INDICATORS 2018



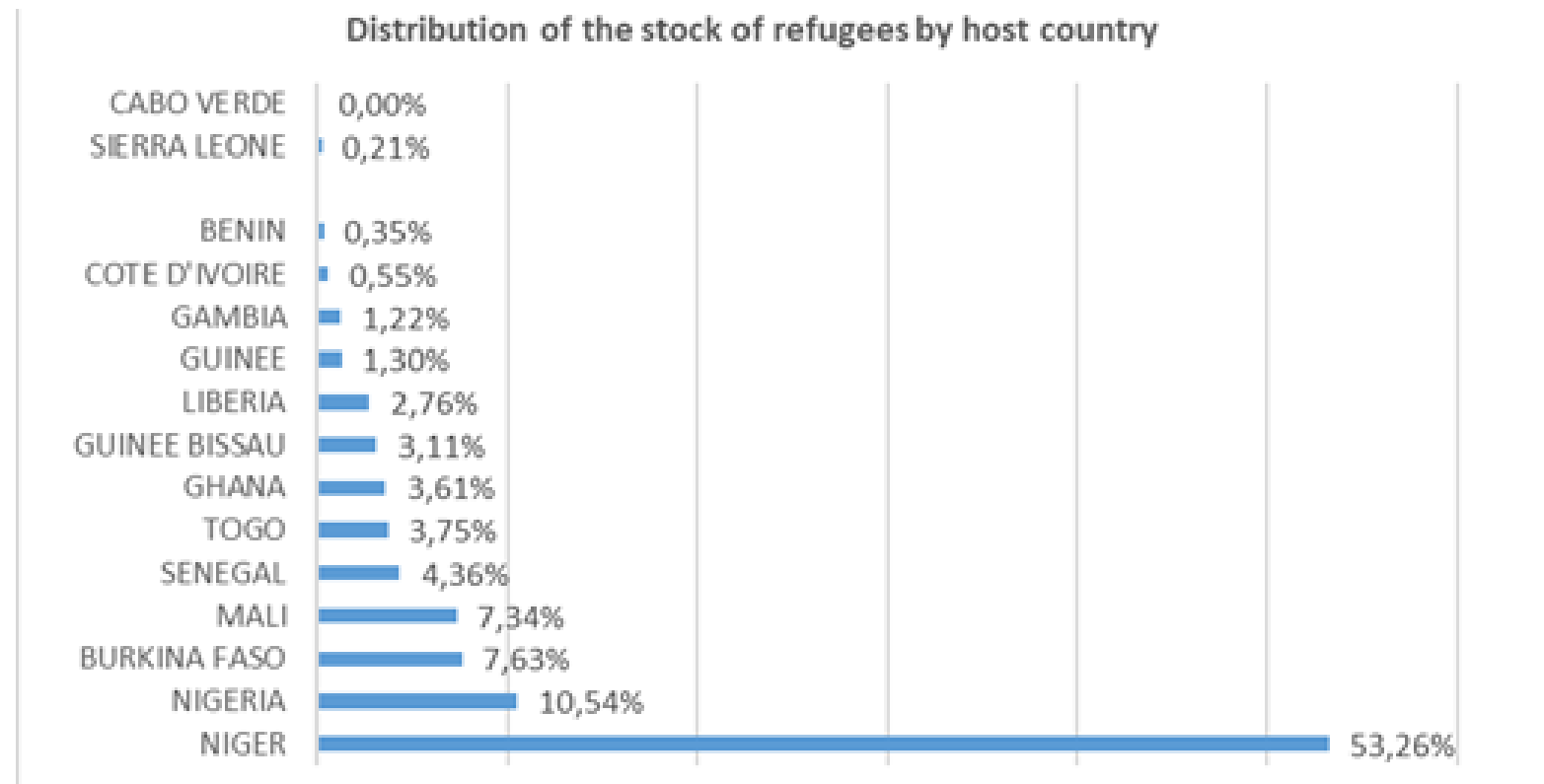
First regional indicators report on migration in West Africa, 2018

Specific reasons for migration (Education, Family reunification, Health, others)



First regional indicators report on migration in West Africa, 2018

Stock of refugees—age groups and willingness to return



Second regional indicators report on migration in West Africa, 2018

○Improvement:

- Analysis of the indicators on irregular migration and forced displacement statistics

○Coordination:

- ECOWAS – EGRIS- African Union (STATAFRIC) and Statistics Sweden



Conclusion



- Capacity building activities in ECOWAS Member States need to be supported to achieve the objectives in the production of migration data including the forced displaced statistics.
- ECOWAS still needs the support of various partners for the production of quality, timely and reliable data, especially on forced migration.

Thank you for your attention



Ntezimana Jean-Pierre



jean-pierre.ntezimana@scb.se