

Forced displacement within the IGAD region: Management of statistics on refugees and IDPs

Charles Ogolla

Statistician, IGAD Secretariat-Djibouti

25-01-2023

Santiago, Chile



Background: Context

THE IGAD REGION



Area: 5.2 million km².

Coastline: 6960 Km

Population: Approx.
292 million & **60%**
Youth

Climate feature: 70%
Arid and Semi-Arid
(ASALs)

Secretariat:

Based in
Djibouti

**Official
Languages:**

English and
French

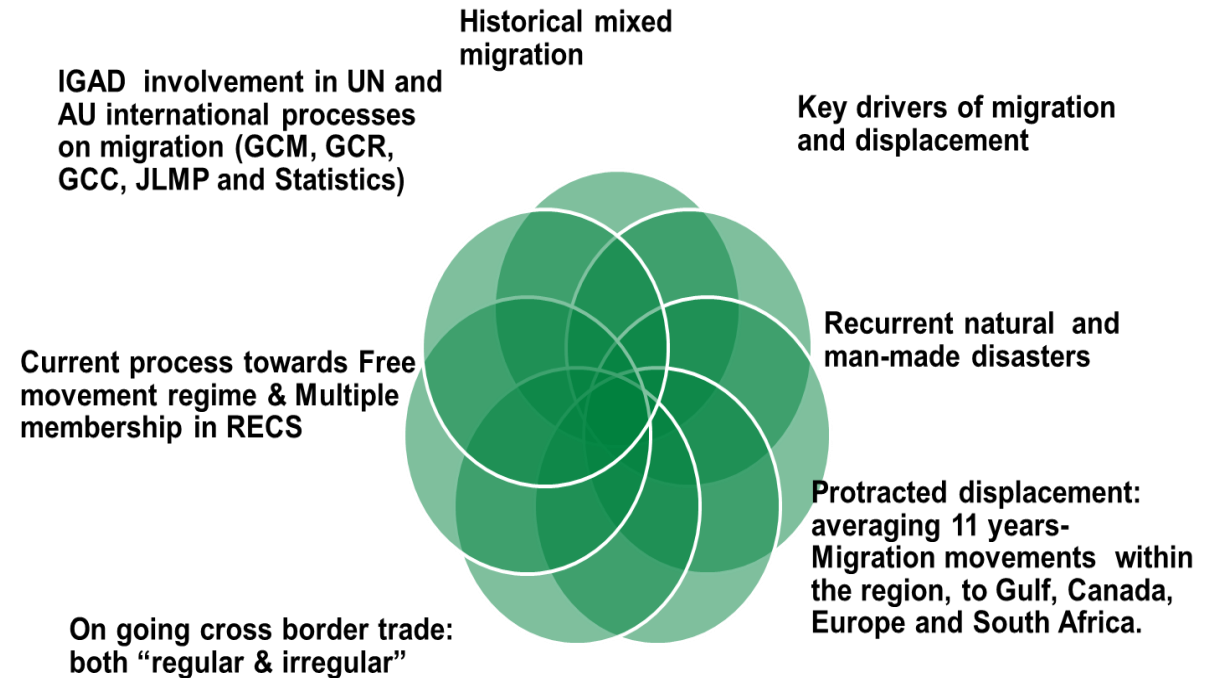
IGAD: Background

Vision: IGAD to be the premier Regional Economic Community (REC) for achieving peace and sustainable development in the region.

Mission: Promote regional cooperation and integration to add value to Member States' efforts in achieving peace, security, sustainable development and improved quality of life in the region.

IGAD mandate encompasses:

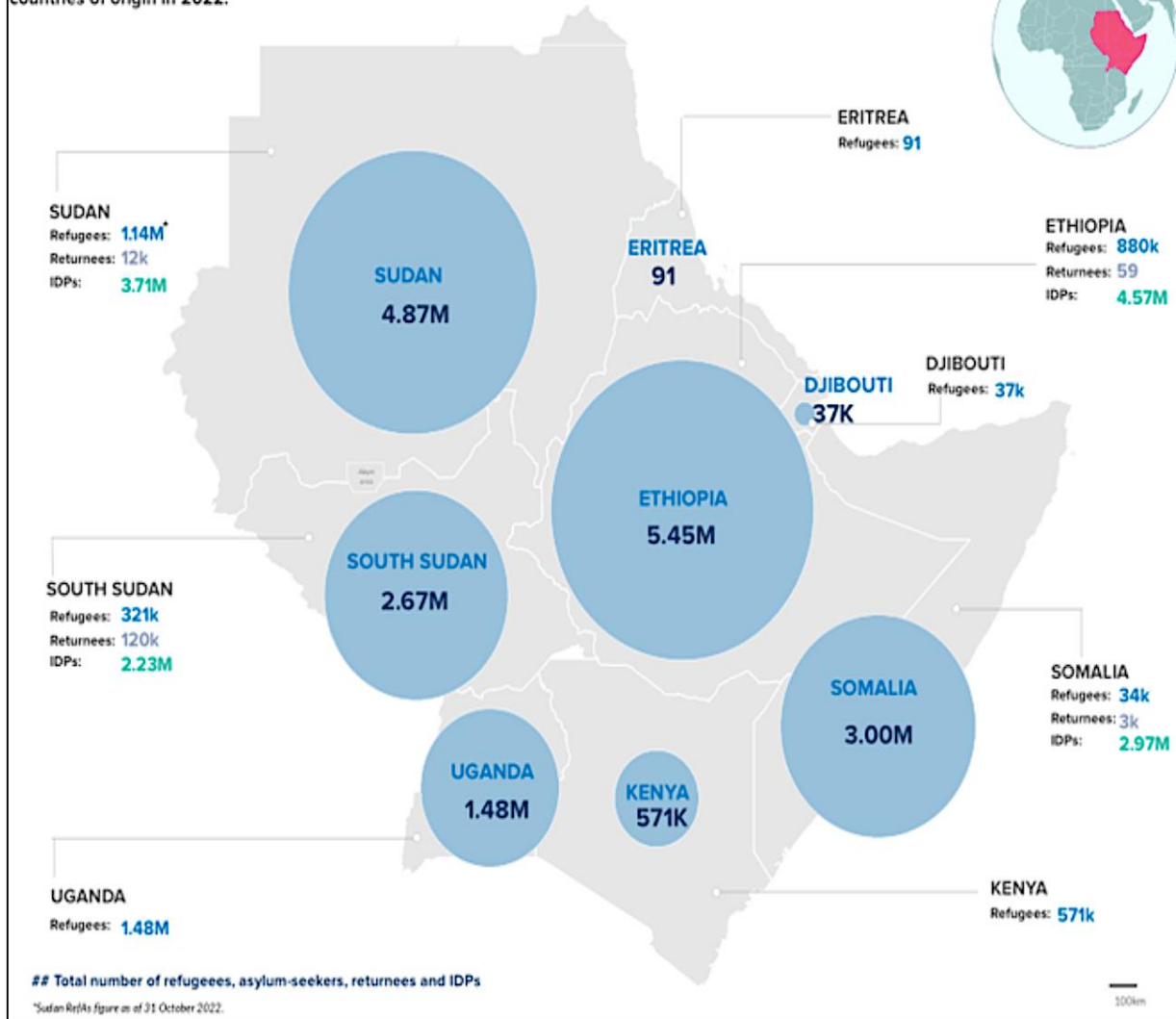
- Agriculture development, natural resources management, environment protection, climate variability/change and disaster risk management;
- Economic cooperation and integration;
- **Social development**; and
- Peace and security.



- As a regional organization, IGAD is also mandated to harmonize regional and national migration policies.
- Guides the regional priorities in migration management programming.
- Emphasizes on Migration data ; I.e. Migration data collection and analysis, Exchange of data on regional migration.

Forced Displacement Situation in IGAD Region

As of 30 November 2022, the IGAD region is host to 4.46 million refugees and asylum-seekers. The majority of refugees and asylum-seekers are from South Sudan, currently at 2.21 million. Some 13.49 million people are internally displaced in the region as a result of conflict and drought. Over 134,000 refugees have returned to their countries of origin in 2022.



Policy, Protocols & Frameworks – Migration and displacement Statistics

AU Continental Migration Policy Framework & Relevant Protocols

IGAD Regional Migration Policy Framework & It's plan of action

Protocol on Free Movement of Persons at regional and continental level

National Migration Policies and Action plans

IGAD Regional Strategy and National Development Plans

GCR and GCM

International and Regional Standards on Statistics

- IRRS, IRIS, ICLS, Conceptual framework on Migration Statistics

SHaSHA2, RSDS and NSDS

Migration Statistics in IGAD Region

IGAD Migration Policy Framework



- Labour Migration
- Border Management
- Irregular Migration
- Forced Displacement
- Internal Migration
- **Migration data**
- Migration and Development
- Inter-State and Inter-Regional Cooperation
- Social and Economic issues

IGAD migration statistics partners

Statistics Sweden (SCB)

International Organization for Migration (IOM)

International Labour Organisation (ILO)

Expert Group on Refugee, IDP and Statelessness Statistics (EGRISS)

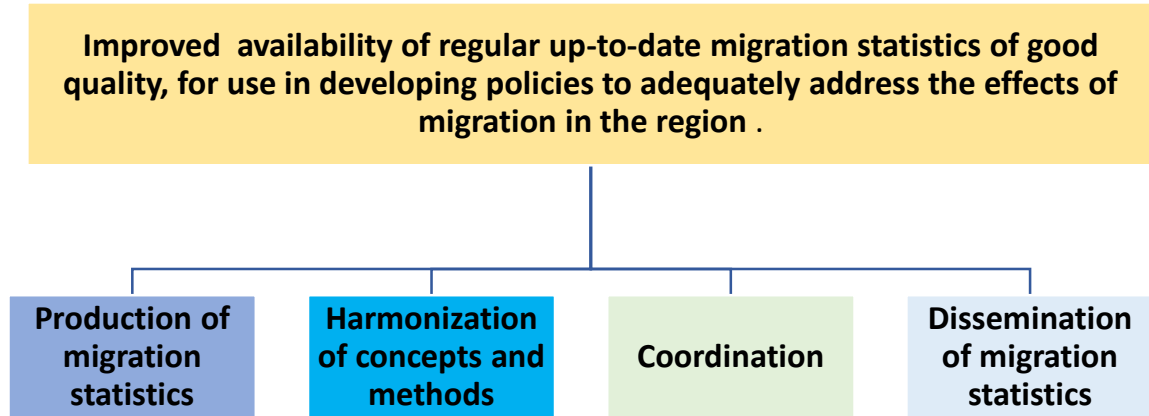
GIZ

STATAFRIC

UNHCR & UNECA

Migration and Displacement statistics-IGAD

Regional level



- Regional Migration and Displacement data TWG
- Generation of the migration Statistics report
- Webinars on migration and displacement statistics
- Migration and displacement priority indicators and Data collection tool
- Learning Exchange between the IGAD MS
- EGRIS/IGAD/SCB/STATAFRIC- workshop on Refugee and IDP statistics
 - Capacity gaps assessment of the MS on Forced displacement statistics
 - Cascading the international recommendations at regional platform
 - Exchange on the best practices amongst the MS in the implementation of the IRRS and IRIS
 - Somalia-IDP Statistics Sector plan
 - Displacement questions in Census-Kenya
 - Development of module on displacement statistics:-Djibouti

National level

- *Supporting the MS in establishment/strengthening the coordination on migration and displacement statistics TWGs*
- *Migration data capacity assessments*
- *Building the capacities of the NSOs on Migration and displacement statistics*
- *Virtual Meetings with MS migration statistics focal points*
- *Modules on Migration and displacement*

Summary

- There is need for investment in migration and displacement data to have reliable and timely statistics

THANK YOU

Muchas Gracias

charles.Ogolla@igad.int



