



Homeland  
Security

# Fiscal Year 2021 Enforcement Lifecycle Report

Nadwa Mossaad  
Office of Immigration Statistics  
United States

*International Forum on Migration Statistics  
January 23, 2023*

# Agenda

- Methodology
- High-Level Enforcement Outcomes
- Enforcement Outcomes by Family Status
- Enforcement Outcomes by Citizenship
- Enforcement Outcomes Over time
- Conclusion

# OIS Lifecycle Dataset: Overview

- Comprehensive dataset encompassing enterprise immigration data
- Records ingested on routine schedule and processed according to shared reporting standards
- Records linked at person level to create end-to-end analytic dataset for noncitizens encountered at the Southwest Border
- Single source of truth for DHS/enterprise reporting and analysis

# Source Data

## U.S. Citizenship and Immigration Services (USCIS)

- Affirmative Asylum (RAPS)
- USCIS Asylum Pre-Screening Office (APSO)
- Deferred Action for Childhood Arrivals (ELIS)
- Legal Permanent Residents (ELIS IV)
- Employment Authorization Documents (CLAIMS3)

## Customs and Border Protection (CBP) Office of Field Operations (OFO)

- OFO Inadmissibles
- OFO Title 42 Expulsions

## CBP U.S. Border Patrol (USBP)

- USBP Apprehensions
- USBP Title 42 Expulsions

## Immigration and Customs Enforcement (ICE) Enforcement and Removal Operations (ERO)

- ERO Charging Documents Issued
- ERO Administrative Arrests
- ERO Initial Book-Ins
- ERO Final Book-Outs
- ERO Alternative to Detention
- ERO Removals and Returns

## ICE Homeland Security Investigations (HSI)

- HSI Administrative and Criminal Arrests

## DOJ Executive Office for Immigration Review (EOIR)

- EOIR Case Information
- EOIR Proceedings
- EOIR Appeals
- EOIR Bonds
- EOIR Schedule
- EOIR Motion

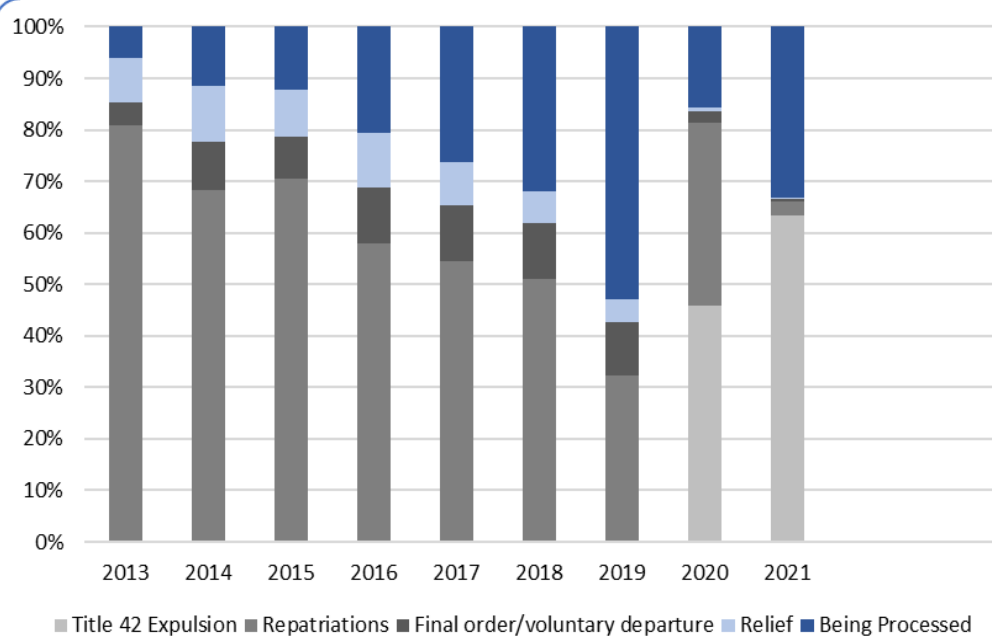
---

**OIS combined 22 datasets matched by person identifiers to create the current version of the Flow Dataset.**

**The OIS Flow encompasses 22 million unique individuals across 120 million events covering fiscal years 2013 through 2021**

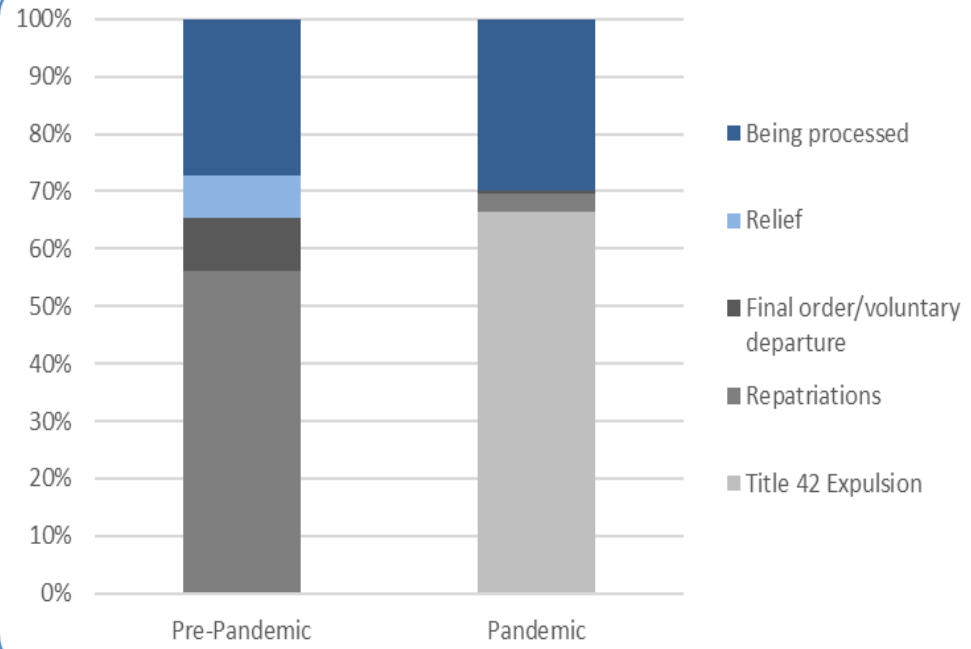
---

# 2021 Enforcement Lifecycle Report – High Level Outcomes



Between 2013- March 2020, CBP completed 3.8 million encounters

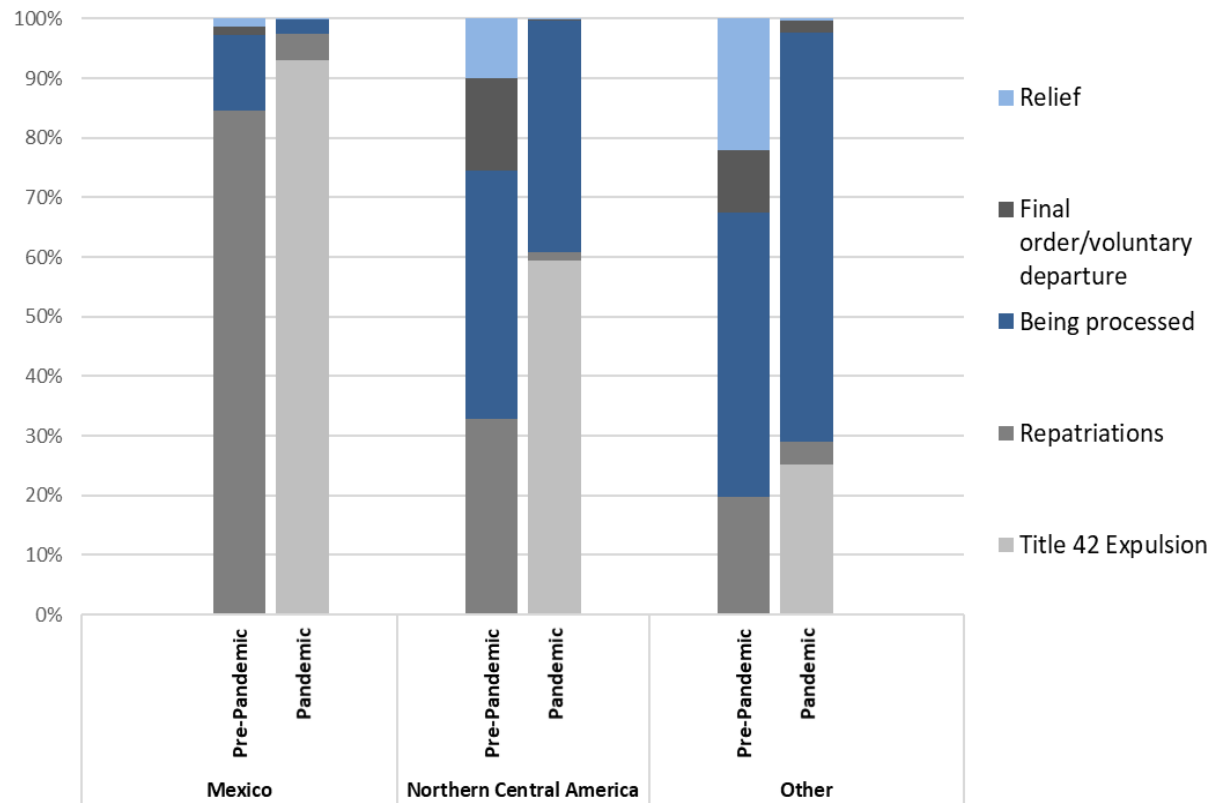
- 56% resulted in repatriations,
- 27% were still being processed as of 12/31/2021
- 9% has unexecuted removal orders
- 7% had been granted relief or other protection from removal.



Since March 2020, CBP completed 2 million encounters

- 65% were immediately expelled under T42
- 3% resulted in T8 repatriations,
- 29% were still being processed as of 12/31/2021
- 0.5% has unexecuted removal orders
- 0.1% had been granted relief or other protection from removal.

# Enforcement Outcomes by Citizenship



Mexican nationals were the most likely to result in expulsions/repatriations

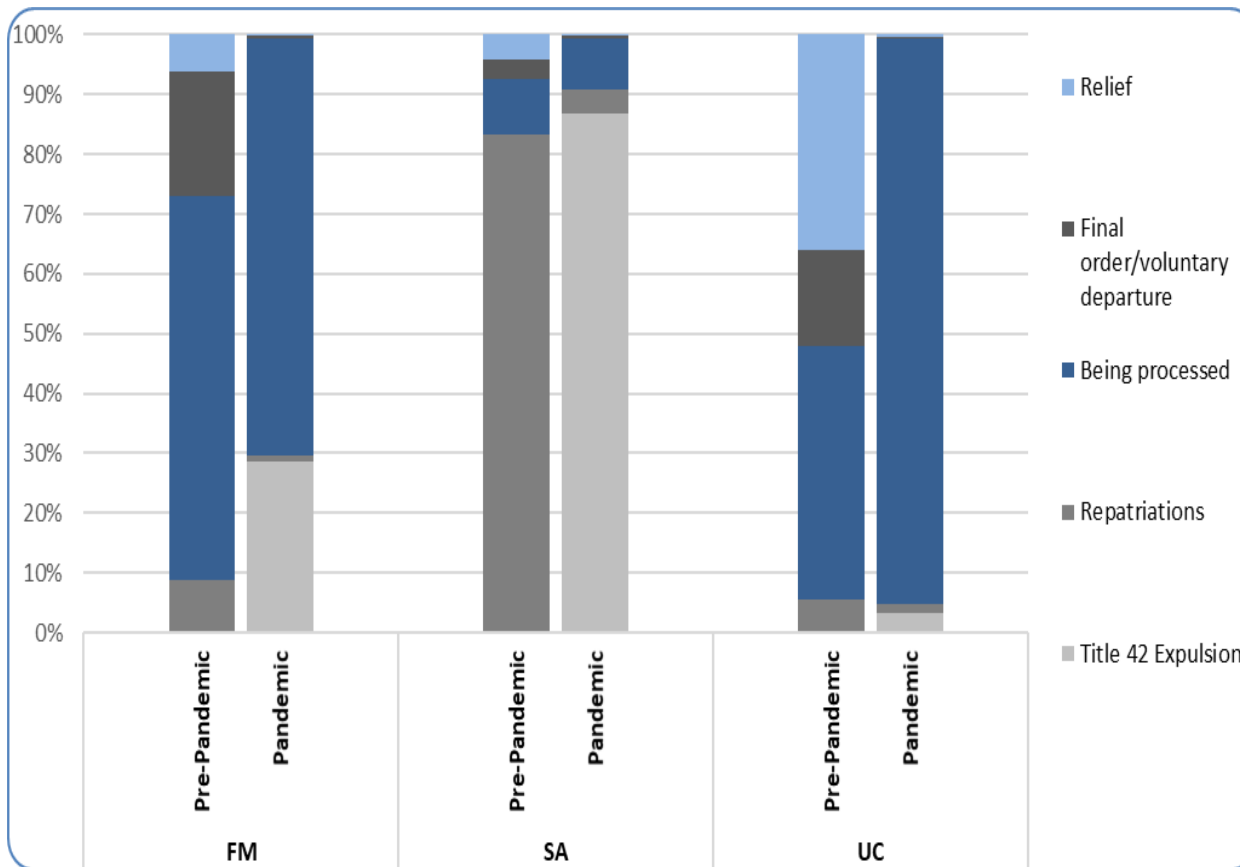
- 91% pre-pandemic and 97% during the pandemic

Nationals from countries other than Mexico or Northern Central America (NCA) were most likely to result in grants of relief or other protection from removal

- Other: 22% pre-pandemic and 2% during the pandemic
- Mex: 1% pre-pandemic and 0% during the pandemic
- NCA: 10% pre-pandemic and 0% during the pandemic

Notes: Pre-pandemic period includes FY2013 through March 19, 2020; pandemic period includes March 20, 2020 through FY2021. Encounters with no subsequent event are excluded. Outcomes are current as of December 31, 2021. Source: OIS Statistical Immigration Data.

# Enforcement Outcomes by Family Status



Overall, 85 percent of SAs had been expelled/repatriated as of 12/31/2021

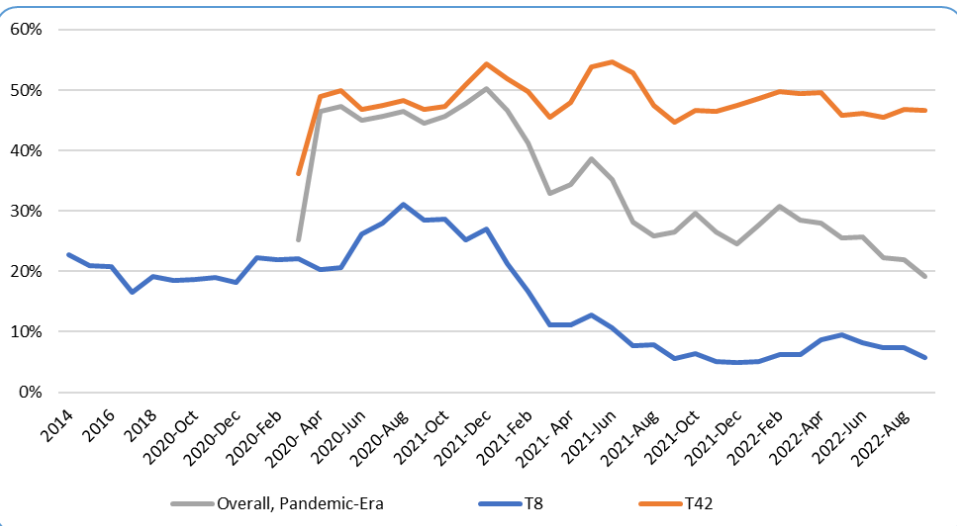
- SA: 83% pre-pandemic and 91% during the pandemic
- FM: 9% pre-pandemic and 30% during the pandemic,
- UC: 25% pre-pandemic and 24% during the pandemic

FM and UC were most likely to have pending cases (still being processed)

- FM: 64% pre-pandemic and 70% during the pandemic.
- SA: 9% pre-pandemic and 9% during the pandemic.
- UC: 34% pre-pandemic and 76% during the pandemic.

Notes: Pre-pandemic period includes FY2013 through March 19, 2020; pandemic period includes March 20, 2020 through FY2021. Encounters with no subsequent event are excluded. Outcomes are current as of December 31, 2021. Source: OIS Statistical Immigration Data.

# Repeat Encounter Rates by Title Authority, Citizenship, and Family Status

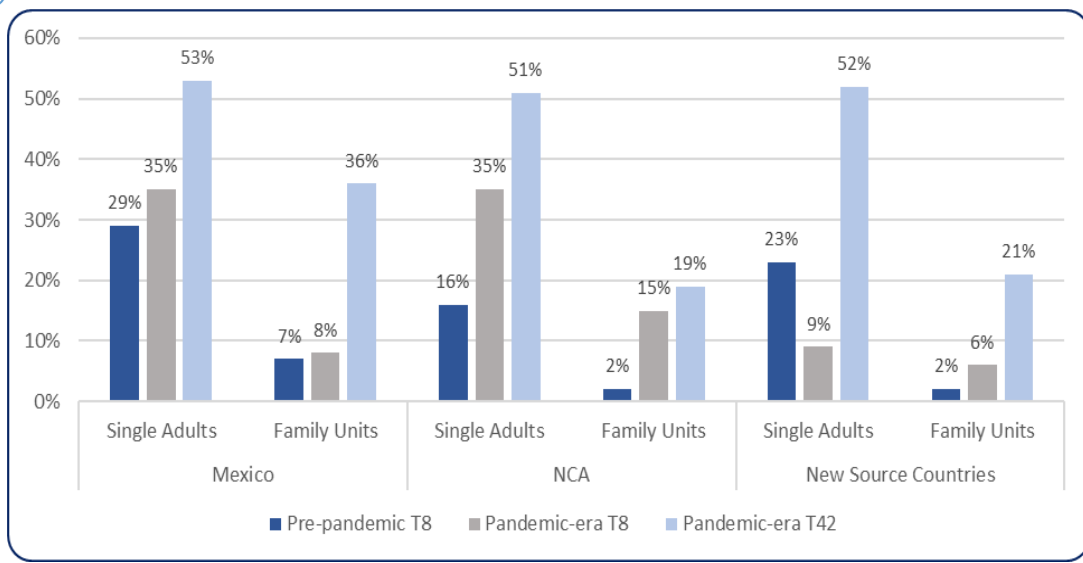


Total encounter levels were significantly higher during the pandemic, but repeat encounters suddenly made up a notable share of total encounters

- Prior to the pandemic, monthly repeat encounter rate (RER) fluctuated around 20%
- During the early months of the pandemic, it rose to close to 50%,
- driven mainly by RER for migrants expelled under Title 42 authority

When processed under Title 42 authority, all country/family groups have higher repeat encounter rates

- Single adults, regardless of nationality had the highest RER when processed under T42
- Family units' (FM) RER when processed under T42 ranged between 19% to 36%, with Mexican FMs in the lead.
- Pre-pandemic T8 RER was consistently lower than pandemic era T8 RER except for New source countries SA





# SWB Encounters by Enforcement Outcomes: FYs 2013 to 2021

MOST RECENT OUTCOMES	2013	2014	2015	2016	2017	2018	2019	2020 Pre-Pandemic	Pre-Pandemic Total	2020 Pandemic	2021	Pandemic Era Total
	<b>Total Encounters<sup>1</sup></b>	443,688	510,043	375,878	478,770	360,274	474,892	937,826	208,404	3,789,775	219,299	1,698,028
Title 42 Expulsion	0	0	0	0	0	0	0	0	0	196,281	1,058,514	1,254,795
Title 8	443,688	510,043	375,878	478,770	360,274	474,892	937,826	208,404	3,789,775	23,018	639,514	662,532
<b>Repatriations</b>	357,388	344,981	263,740	276,353	195,345	239,888	299,909	137,080	2,114,684	14,168	43,222	57,390
Removals	316,690	308,460	249,072	262,860	184,538	228,121	254,586	120,182	1,924,509	8,293	29,990	38,283
Expedited	188,546	178,950	142,227	145,299	101,705	127,841	142,157	67,696	1,094,421	2,957	15,422	18,379
Reinstatement	120,560	119,328	98,752	108,924	76,502	92,895	99,705	49,624	766,290	4,759	13,178	17,937
Administrative removals	805	949	865	764	580	574	680	283	5,500	75	95	170
Other removals <sup>2</sup>	6,779	9,233	7,228	7,873	5,751	6,811	12,044	2,579	58,298	502	1,295	1,797
Returns	35,119	30,039	10,343	8,842	7,873	8,313	16,155	4,068	120,752	2,128	4,203	6,331
Re-encounters <sup>3</sup>	5,579	6,482	4,325	4,651	2,934	3,454	22,337	12,429	62,191	3,745	9,029	12,774
MPP EOIR Termination <sup>4</sup>	0	0	0	0	0	0	6,830	401	7,231	2	0	2
<b>No confirmed departure</b>	86,300	165,062	112,138	202,417	164,929	235,004	637,918	71,324	1,675,092	8,850	596,292	605,142
Being processed	26,566	58,424	45,504	98,166	94,367	150,082	492,202	58,546	1,023,857	8,048	555,275	563,323
Being Processed By DHS	9,832	16,639	8,599	19,765	22,214	34,549	143,780	19,027	274,405	2,996	327,465	330,461
In EOIR proceedings <sup>5</sup>	2,930	10,373	9,307	31,394	38,638	70,140	269,833	23,970	456,585	1,689	185,893	187,582
EOIR case completed - additional DOJ action <sup>6</sup>	13,804	31,412	27,598	47,007	33,515	45,393	78,589	15,549	292,867	3,363	41,917	45,280
Final order/voluntary departure	19,099	48,207	30,668	51,553	38,921	50,641	97,825	8,807	345,721	429	8,553	8,982
Unexecuted removal orders	18,303	46,298	29,241	49,770	37,988	49,546	96,257	8,796	336,199	423	8,497	8,920
In absentia	13,270	35,397	20,803	34,474	29,033	39,642	76,795	6,172	255,586	34	2,429	2,463
Not in absentia	5,033	10,901	8,438	15,296	8,955	9,904	19,462	2,624	80,613	389	6,068	6,457
Unexecuted voluntary departures	796	1,909	1,427	1,783	933	1,095	1,568	11	9,522	6	56	62
Relief	38,339	54,012	34,392	49,909	29,230	29,691	40,516	3,615	279,704	273	2,436	2,709
SIJ or affirmative asylum	1,923	9,568	7,609	18,847	12,823	10,784	10,622	884	73,060	56	124	180
LPR status granted by DHS	10,828	2,372	1,537	2,141	1,217	1,793	5,000	479	25,367	13	812	825
EOIR relief <sup>7</sup>	5,224	10,846	9,679	11,746	6,063	7,123	9,001	1,134	60,816	123	303	426
EOIR termination	18,319	27,741	13,274	14,623	7,660	8,945	15,146	1,043	106,751	62	1,066	1,128
Other <sup>8</sup>	2,045	3,485	2,293	2,552	1,467	1,046	747	75	13,710	19	131	150
No Subsequent Event <sup>9</sup>	2,296	4,419	1,574	2,789	2,411	4,590	7,375	356	25,810	100	30,028	30,128

# Conclusion

The 2021 enforcement lifecycle report describes enforcement outcomes, as of December 2021, for persons encountered at the Southwest Border from 2013 to 2021 with a focus on pre-pandemic vs pandemic era cohorts

## Pre-Pandemic Era

- 56% of encounters had been repatriated and 27% have pending cases still with DHS or DOJ.
- The outcomes varied considerably by citizenship and family status:
  - 83% of SAs and 91% of Mexican nationals were repatriated,
  - 63% of FMs, 43% of UCs, 41% of NCA nationals, and 48% of nationals of other countries were still being processed.
  - UCs and non-Mexican, non-NCA were the only groups granted relief or other protection from removal in substantial numbers (36% and 22%).
  - And for SAs and FMs, almost all repatriations occur within the first year of an encounter.

## Pandemic Era

- 66% of encounters resulted in expulsions and 3% in repatriations. 30% have pending cases with DHS or DOJ.
- Expulsion rates varied by citizenship and family status:
  - SAs and Mexican nationals were expelled or repatriated at higher (90% and 97%) compared to NCA nationals (66%)
  - 94% of UCs and 68% of FMs are still being processed for removal.
  - Repeat encounters as a share of total encounters rose from less than 10% pre-pandemic to more than 30% during the pandemic.
  - Repeat encounter rates for migrants expelled under Title 42 authority rose to a record high of 50%.



Nadwa Mossaad

Nadwa.Mossaad@HQ.DHS.GOV

**Link to Enforcement Lifecycle Reports:**

<https://www.dhs.gov/immigration-statistics/special-reports/enforcement-lifecycle>

**Link to Other OIS Products:**

<https://www.dhs.gov/immigration-statistics>

