

Practices and Potential Use Case of Morocco

UN Technical Workshop on
Time, People, Places and Relationships
A New Lens to Organize Social and Demographic Outcomes
Ottawa, Canada, 9-11 September 2025

Items

1. Context & commitments
2. S&D statistics infrastructure
3. Building blocks integration
4. Challenges & way forward



Context & commitments

Social programs and initiatives (variety)

- Social protection system, human development initiative and direct social assistance.
- Social Development and Integration, Social Entrepreneurship, Direct Social Assistance, Program, etc.)

Key Initiatives

- Unified Social Registry, National Population Register, National Records Agency,
- The establishment of a National registers Agency is part of the broader effort to streamline and improve social program delivery.
- Budget-Balancing Tool based on performance and results: is being implemented to ensure the sustainability of social programs.

Participation in various global and regional statistical groups & initiatives.

- Despite the heavy burden in the area of social and demographic statistics,
- Morocco is among the countries with the highest participation, and involvement
- Canada, Ghana, Italy, **Morocco**: each participates in 7 groups.
- African (SASHA, UNECA, AFRISTAT, etc.)
- UNESCWA and MENA-regional groups and initiatives
- Euro Mediterranean groups groups and initiatives

Social and demographic statistical program

- Annual LFS survey (multimode)
- 2024 : 7th population census and 2d economic census
- 2023 : 4th Survey on informal sector
- 2025 : 7th Survey on LSMS
- 2026: 3rd Time use survey
- 2025: 2nd Family survey
- 2029: 3rd Violence survey
- 2029: 2nd International migration survey, etc.
- Developing the administrative registers system through digitalization and integration

Realities and expectations

Supply: production

- Complexity of social phenomena and social ecosystem
- Variety of frameworks, producers and mandates
- Decentralized statistical responsibilities
- Declining response rates and rising costs
- More restriction of Budget & performance
- Low public acceptability for admin data linkages
- Low accessibility to BIG data

Demands: Uses

- Rapid societal changes and mutation
- Growing demands for data for various uses
- Competitiveness Digital platforms and IA

Supply: production

- Mapping data architecture, infrastructure, domains, producers, users-needs, sources, frameworks, data-base
- Identifying gaps in governance, performance, capacities, tools, methods, data, resources, etc.)
- Investing in integration, coherence, convergence, overarching, etc.

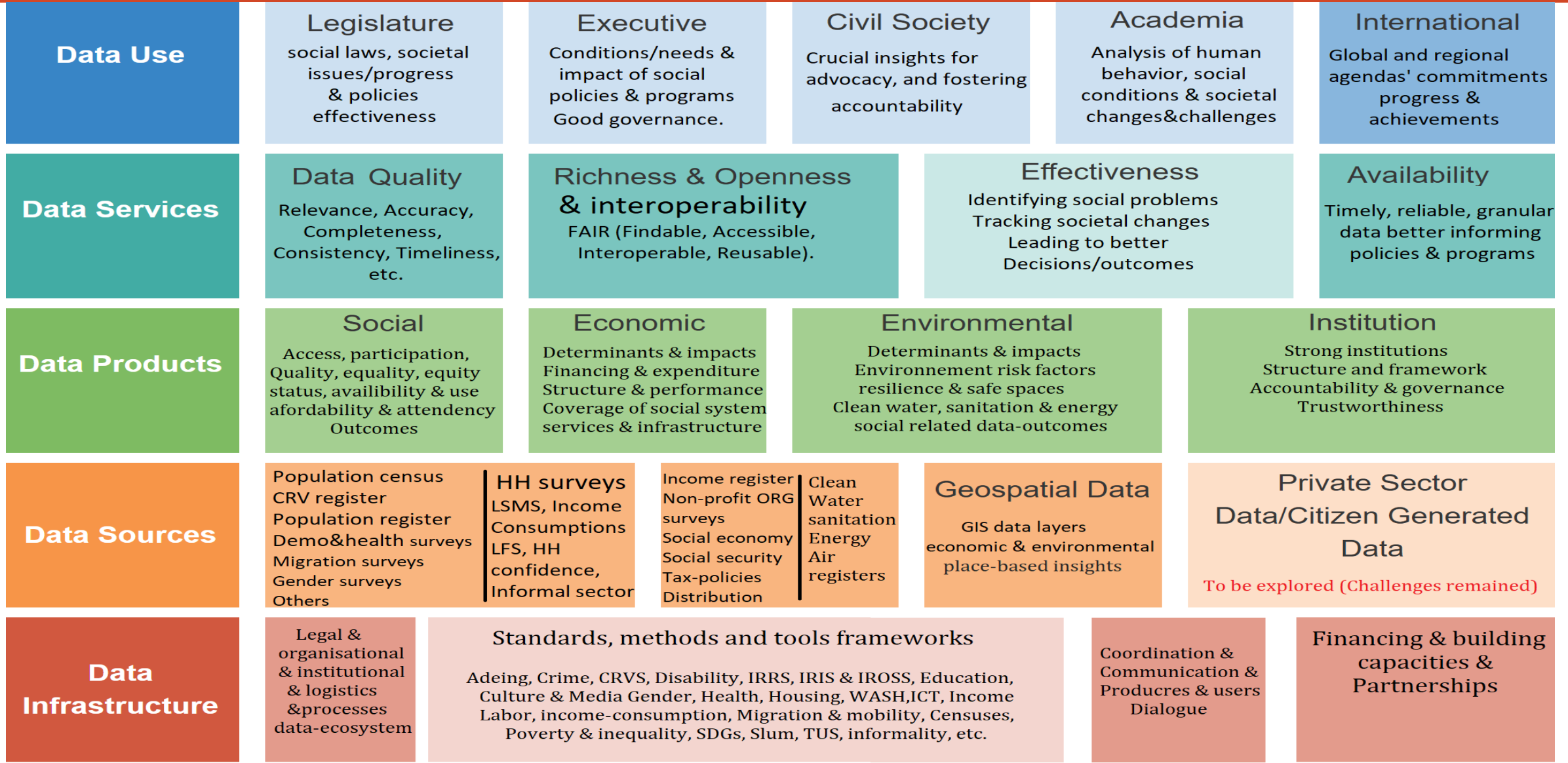
Demands: Uses

- Categorize, prioritize, organize, avoid redundancy
- Explore New data platforms and IA

Valuation of data as an asset (SNA-2025) for more agility performance and resilience

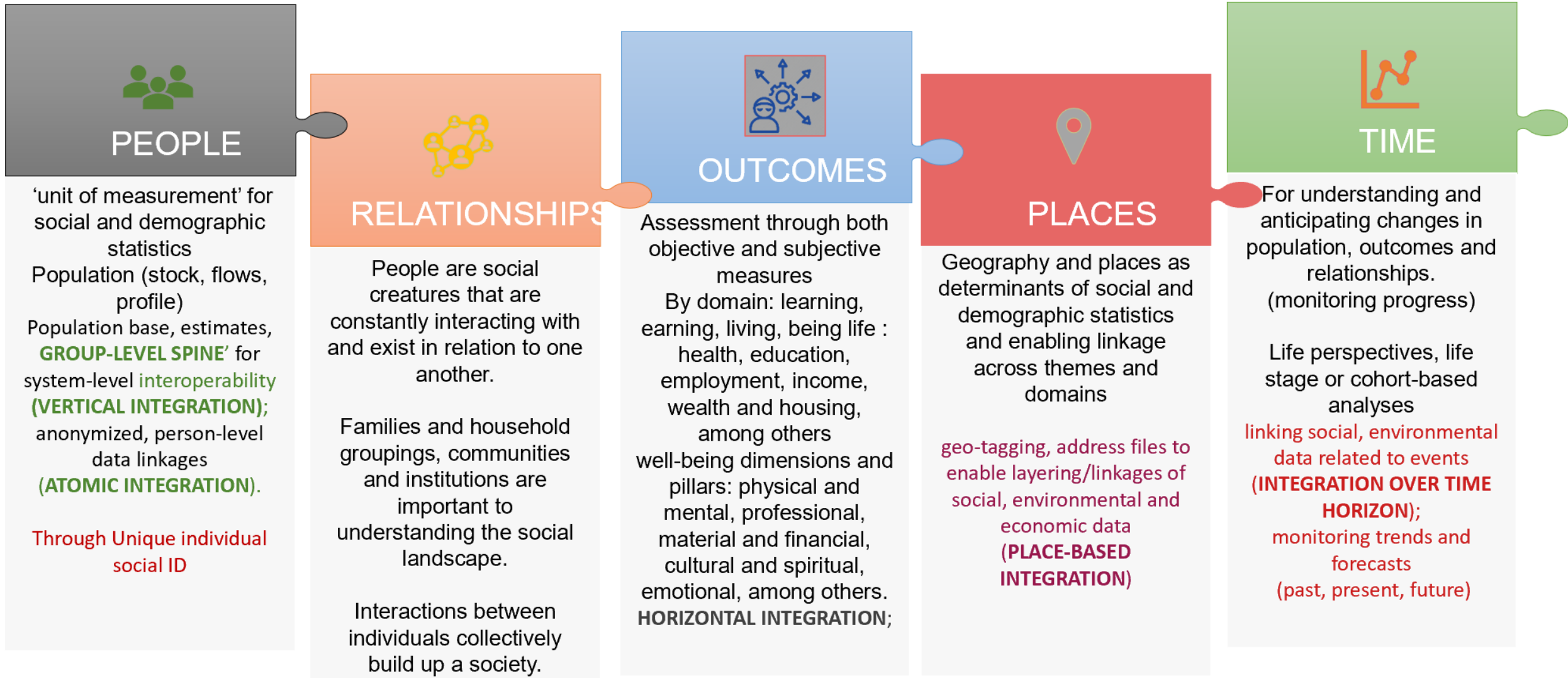
S&D statistics infrastructure

S& D statistics ecosystem



Building blocks integration

Building blocks: vertical and horizontal integration



Population change over time

Base

- Population censuses (each 10 years, last one in 2024)
- **Challenges** in Civil registration (generalization of the **digitalization** in process)
- Setting-up the **population register (RNP)**

Estimates

- In flows (birth and immigration)
- Outflows (death and out-migration)
- Population estimates (quarterly and annually)
- Used as denominators and weights (for outcomes)

Projections

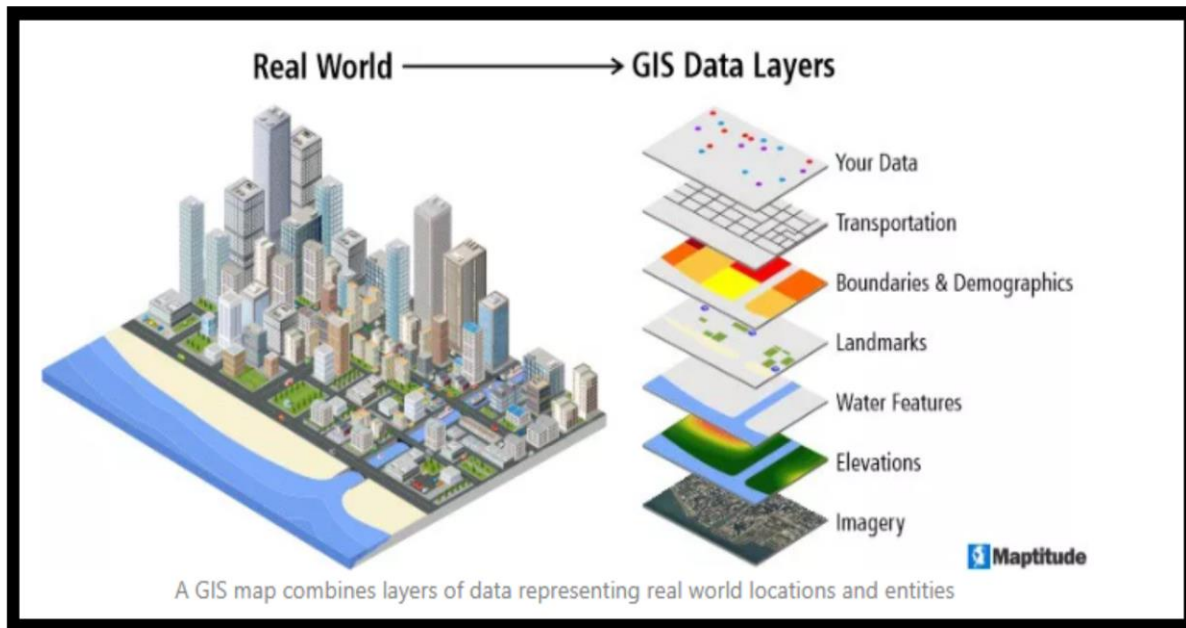
- Long term trends
- Estimates of anticipated population size and structure by age and spaces
- Policy-makers needs for social programs & resources allocation

Data linkage

- **Opportunity**
- Project of **linking** all social programs' registers
- **Unique individual social ID (RNP-RSU)**
- Through **biometric digital data**
- **Generalization** process

PLACE as horizontal integrator

- ✓ 2023-2024: cartography & **geo-referencing** all constructions and Settlements, by typology & their uses (activity)
- ✓ 2023-2024 : **economic** census
- ✓ 2024 : **population** and **housing** census
- ✓ 2016 **agricultural** census
- ✓ Economic, environmental, agricultural and social data (**challenging**)
- ✓ Administrative **Registers** (mainly PR and SR) (**progressing**)



GIS LAYERS to connect place-based insights

- ✓ Place-based “spine” based on standards geography & georeferenced data
- ✓ Data from GIS data layers
- ✓ Data from economic census
- ✓ Data from population and housing census
- ✓ To be combined with georeferenced data from other different sources

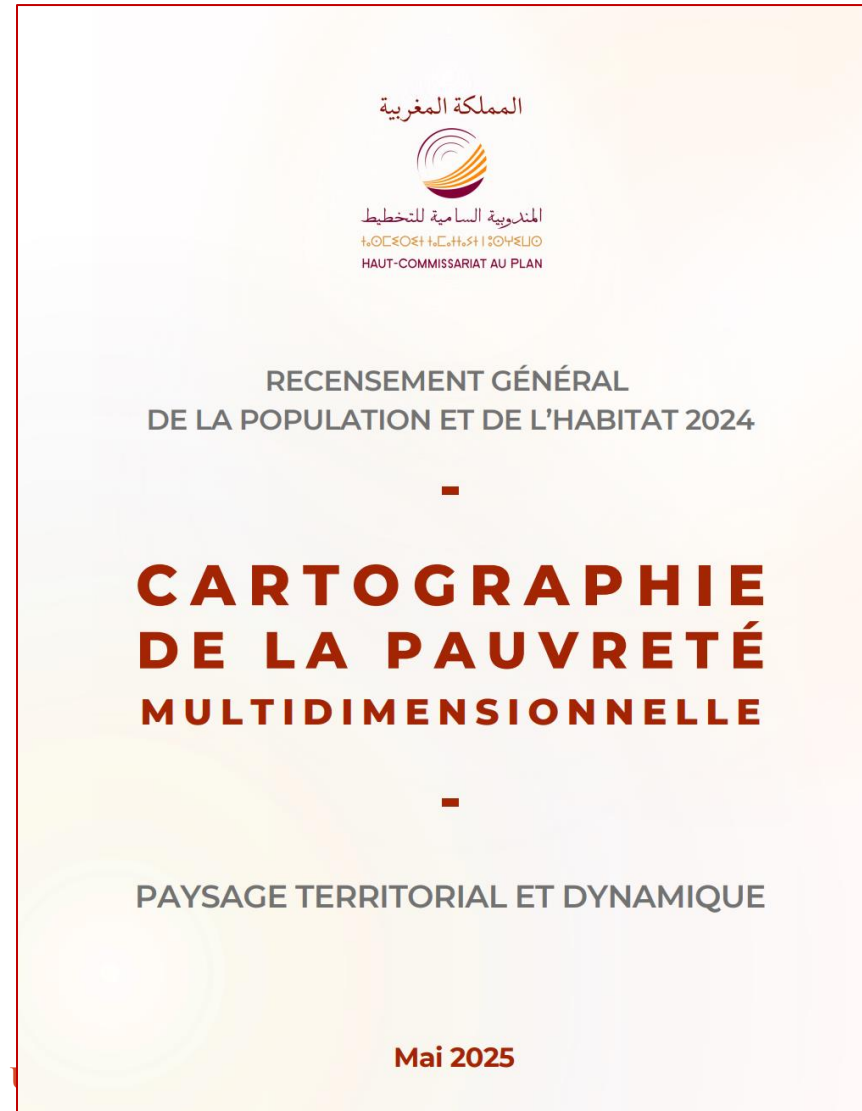
Main territorial insights and dynamic landscape

- ✓ Mapping multidimensional poverty,
- ✓ School map (+ ‘Massar’: Pupil ID & tracking system)
- ✓ Health map (+ ISU : social protection system)
- ✓ Services and infrastructure and dynamics
- ✓ Etc.

Multi-dimensional poverty map

Territorial and dynamic landscape

- 3rd update of the cartography of multidimensional poverty
- A new map of multidimensional poverty released in may 2025
- Trends between the 2014 census data and the 2024 one.
- spatial disparities spatial disparities across all spaces and areas.
- And populations segments groups.



- A decline in multidimensional poverty, particularly in rural areas
- Significant regional, provincial, and municipal disparities remain
- Territorial targeting policies have had a positive impact

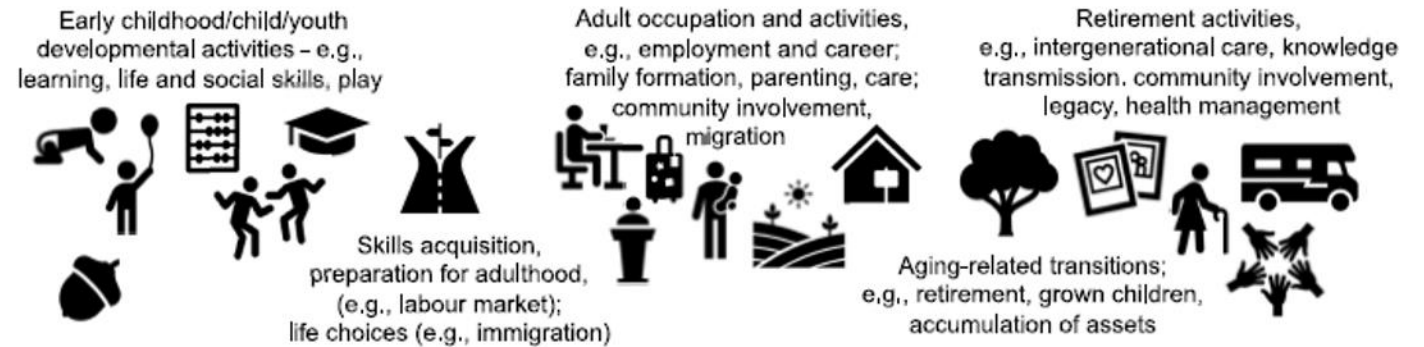
People-outcomes and time

Life-course & life-stages

- ✓ **Family survey-2025** : collecting data on main events related to : education-graduation, , career-job opportunities, living parent home-family formation/dissolution, retirement etc.
- ✓ **Demographic and health surveys** : events related to nuptiality, fertility, migration and mortality.
- ✓ **Migration surveys** : events related to migration itinerary and process (related events on nuptiality, fertility, jobs, etc.

Time use insights

- ✓ **Time use data**: insights on time use patterns and valuation of unpaid domestic services, of work load and distribution, understanding determinants of well being, and
- ✓ **Valuation** of the contribution of **unpaid** domestic work to GPD,
- ✓ Setting-up the **household satellite accounts**.



Longitudinal and intergenerational

- ✓ **Intergenerational Social Mobility (modules) 2011 & 2026**
Analysing social profile-status of individuals (by **age, gender, siblings' number and rank**) compared to their fathers and mothers ones, through a set of variables : **Occupation, professional status; sector of activity; education attainment and fields, income.**
- ✓ **Longitudinal Household survey (2013, 2015 2017, 2019 and 2023 waves)**, conducted by ONDH (on many social domains and topics)

Challenges & way forward

Challenges & way forward

Realities	Expectations
systematically organizing statistics	<ul style="list-style-type: none"> ▪ People (flows, stocks, profile (over the life course and over spaces : localities and institutions) ▪ Relationships (Extent, functional, quality and impacts) ▪ Multi-levels, multi-dimensions & multi-domains
Decentralized-fragmented-thematic outcome siloes	<p>Harmonized domains-areas <u>outcome</u> through better data governance, architecture, performance and intergradation (horizontal thematic-integration);</p> <p>Linked micro-data through a unique individual social ID (enabling and facilitating the follow-up of the multiple and various social protection programs and the assessments of their impacts)</p> <p>Georeferenced the all observed Units (geographical-integration) of the various data sources (censuses, HH surveys, registers) both social, economic, environmental data,</p>
Challenging demands (thematic, timeliness, disaggregation)	<p>Accessible data to various users at different 'levels' and easier to be generated and combined through (vertical integration: observed units segments or a group-level spine) or by consistent break-downs or crosscutting variables</p>
Challenges responding to demands for more timely data	<ul style="list-style-type: none"> ▪ For well targeted programs and monitoring key outcomes over time, ▪ For detailed insights into specific phenomena; ▪ For previsions-prospections (horizontal integration over time)
Need for greater agility and more resilience of social statistical eco-system	<p>Approach focus on system-wide 'fungibility' and interconnectivity; better governance and performance mechanism.</p>

Thank you...

Questions ?!