

Indonesia's Country Practices: The Time Dimension in Social And Demographic Statistics

UN Technical Workshop on Time, People, Places and Relationships:
A New Lens To Organize Social and Demographic Outcomes

Ottawa, September 10, 2025

Directorate of Population and Labor Statistics
BPS – Statistics Indonesia



The Evolving Role of BPS-Statistics Indonesia in Its Capacity as the National Statistical Office



Indonesia consists of:

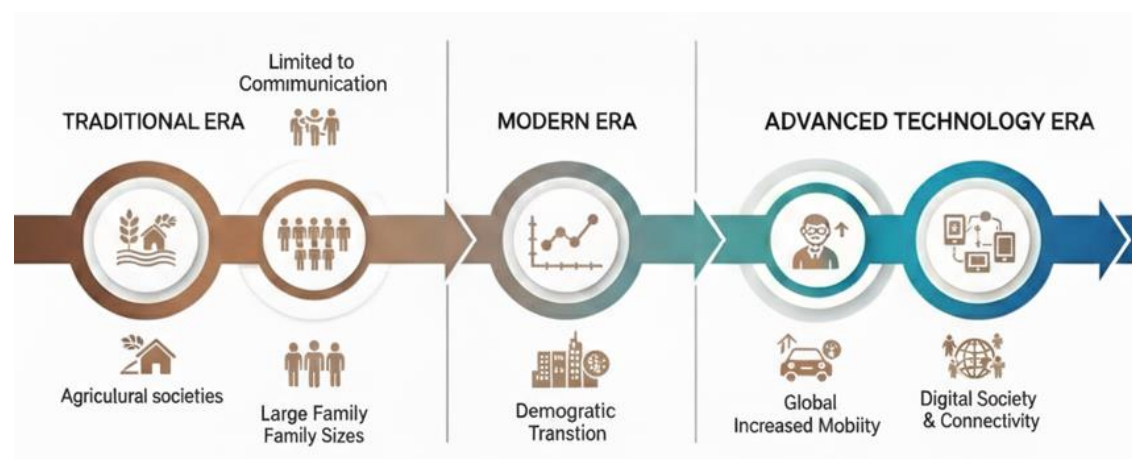
38 provinces

514 regencies/municipalities

The population in 2025 is projected to reach **284.4** million

Why Time Matters: From Static Snapshots to Dynamic Insights

- ✓ The world is changing rapidly, and **traditional statistical systems are no longer sufficient.**
- ✓ Policymakers now need dynamic, high-frequency data for **real-time decisions.**
- ✓ BPS must shift from static snapshots to actionable insights (***Meaningful Statistics, Impactful Statistics***).
- ✓ **Modernization is key:** leveraging big data, improving accuracy and timeliness, and adapting to a digital society.
- ✓ This **transformation** keeps BPS relevant and indispensable.





Key Social and Demographic Data Collections



Population Census (10-yearly; latest 2020): Population size, characteristics, socio-demographic indicators; basis for projections. **Intercensal Population Survey:** Conducted between two censuses.



National Socioeconomic Survey (Susenas; biannual): Welfare, education, health, and poverty indicators.



National Labor Force Survey (Sakernas; biannual): Employment, unemployment, and labor characteristics.



Village Potential Data (PODES; every 3–4 years): Infrastructure and village potential; conducted before major censuses.



Indonesia Demographic and Health Survey (IDHS/SDKI; every 3–5 years): Fertility, mortality, reproductive health (with Ministry of Health and National Family Planning Board).



Other Small-Scale Surveys and Registries

Time Dimension in Social and Demographic Statistics:

Three Interrelated Pillars



1. Time as Frequency and Dissemination

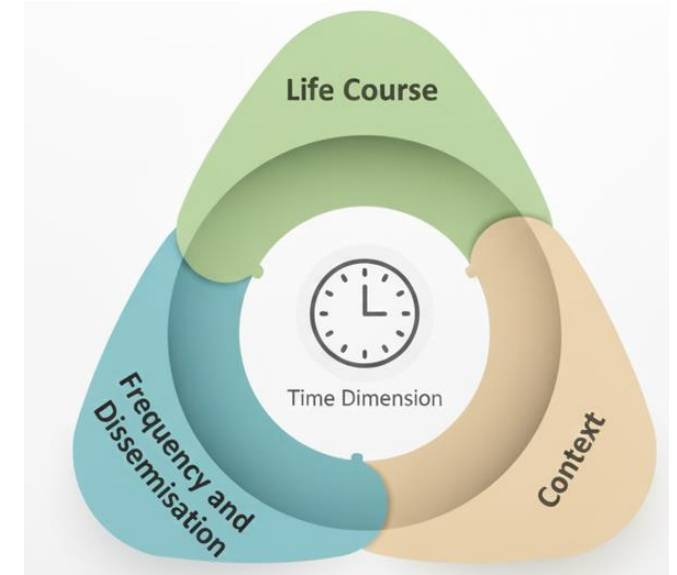
- More frequent, detailed, and accessible data.
- Supports BPS's shift to **real-time** and **open data** systems.

2. Time as Life Course

- Tracks **longitudinal and dynamic** life trajectories.
- Enables **deeper policy analysis** in education, labor, health, and social protection.

3. Time as Context

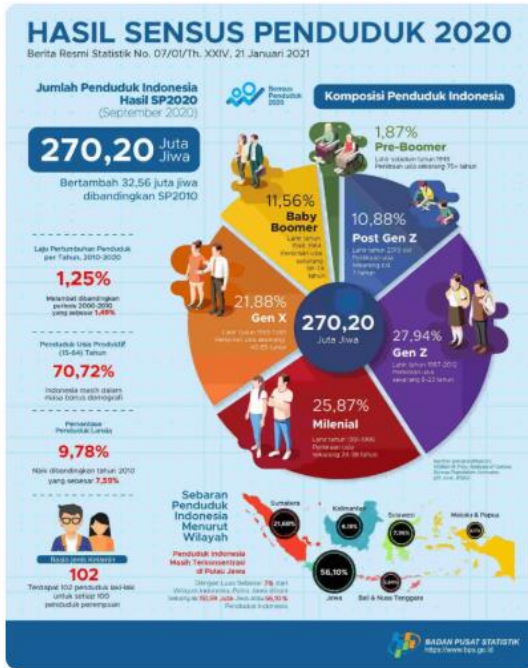
- **Adapts statistical methods** to social, economic, and technological changes.
- **Covers issues** like urbanization, digitalization, climate change, and aging.



Integration of the Three Pillars

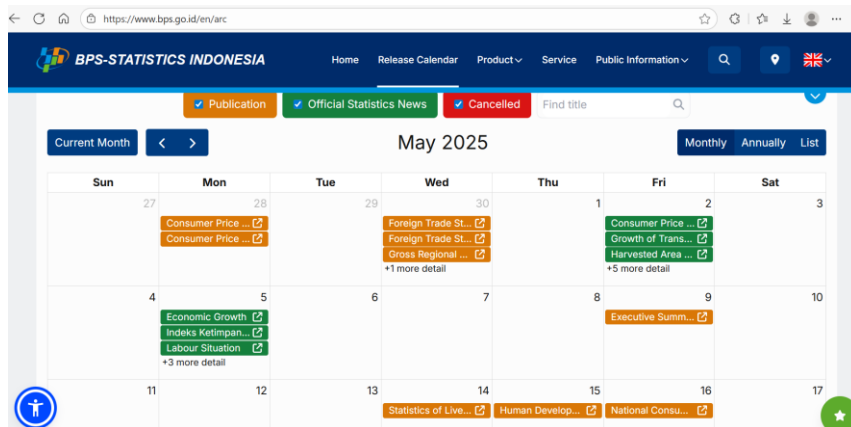
- Drives **BPS modernization**.
- Keeps statistics **relevant, agile, and evidence-based**.
- Supports **data-driven decisions** for **sustainable development**.

Time as Frequency and Dissemination: Indonesia's Population Data Transformation



Modernizing Data Frequency & Dissemination

- ❖ **Admin Data Integration** → Key strategy for higher frequency.
- ❖ **2020 Population Census** → First combined approach; generational age groups dissemination: Pre-Boomer, Boomer, Gen X, Millennial, Gen Z, Post-Gen Z.
- ❖ **Advanced Release Calendar (ARC)** → Regular, predictable releases; key stats include poverty & unemployment.
- ❖ **Big Data Utilization** → Boosts accuracy & timeliness; Indonesia as **Asia-Pacific Regional Hub on Big Data**; Mobile Positioning Data (MPD) from Mobile Network Operator for commuter mobility and tourism statistics.



Time as Life Course

Capturing the Human Story through the Life Course Perspective



- Understands **dynamic human experiences** beyond static data.
- Tracks **individuals from birth to old age**, connecting life stages.
- Supports **policy design** with evidence of transitions and outcomes.
- BPS has **previously collected** panel data:
 - National Socio-economic Survey (**Susenas**) (3-year panels)
 - National Labor Force Survey (**Sakernas**) (3-year panels)
- **Need for broader longitudinal strategy** for deeper insights.

Framework for Provision of Socio-Demographic Data/Indicators by BPS



Through the Time as a Life Course Approach

Elderly period (aged population)

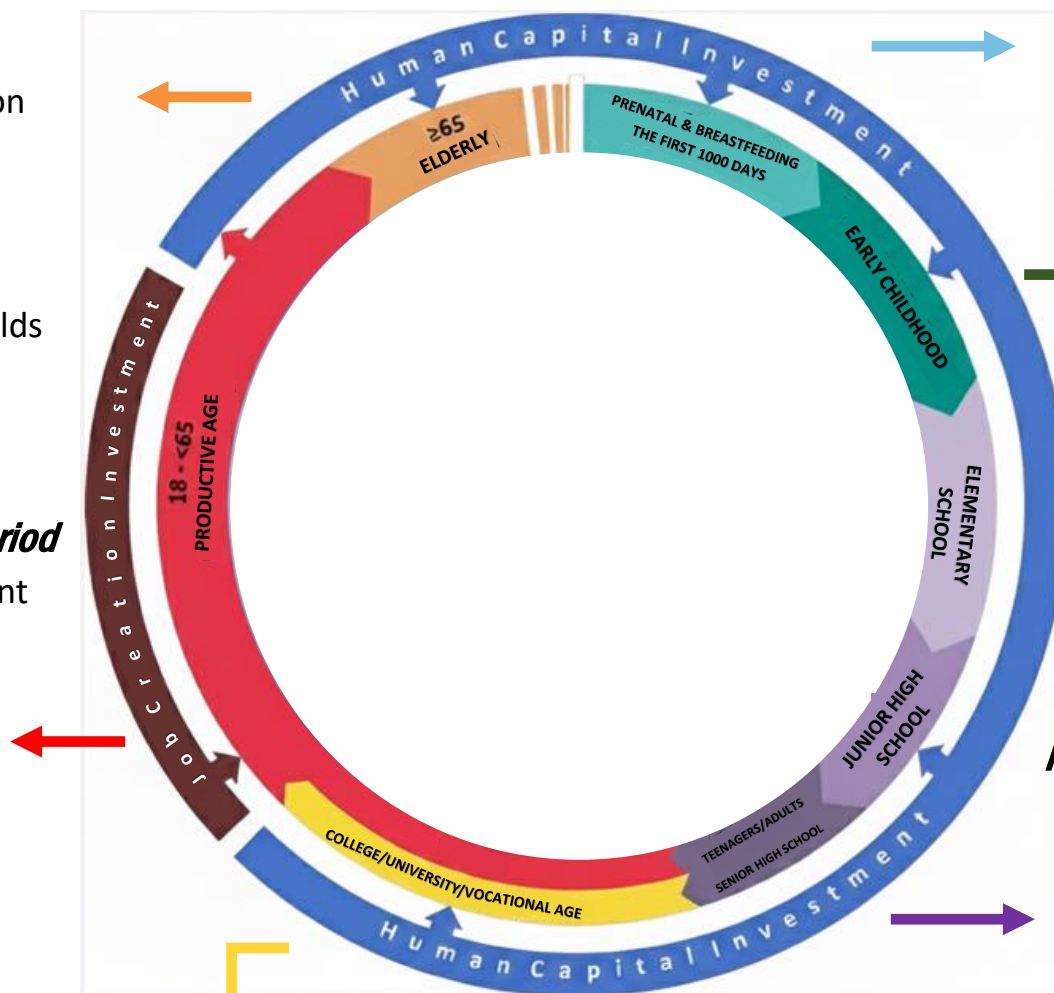
- Percentage of elderly population without disabilities
- Percentage of elderly without having difficulties in seeing, reading and listening
- Percentage of elderly households receiving social assistance
- Socio-economic conditions of elderly

Productive age (working age) period

- Employment and Unemployment
- Labour force participation rate
- Wage, expenditure/income
- Poverty
- Entrepreneurship
- Gender development
- Youth development index
- Median age of first marriage
- Labour migration

University/College (Tertiary education)

- School participation at tertiary education
- Graduation from vocational education/training



First 1000 days of life

- Birth and Fertility Rates
- Infant Mortality Rates
- Maternal death
- Youth fertility rate
- Stunting prevalence
- Prevalence of immunized children aged 12-23 months
- Percentage of household having access to sanitation and safe drinking water

Early childhood and pre-school period

- Child participation in early childhood education
- Percentage of school children in grade 1 of primary school who ever enrolled in early childhood education
- Child protection (index)
- Child Rights Fulfillment (index)
- Birth certificate ownership

Primary and Secondary Education Period

- School participation of children at primary level
- School participation of children at junior high school level
- School participation of children at senior high school level
- Expected years of schooling
- Mean years of schooling for population aged 15+
- Percentage of children with disabilities having access to basic education services

Time as Context

Evolving with Society: The Challenge of Definitions



- ✓ **Definitions must evolve** to reflect societal changes.
- ✓ **BPS updates concepts** and classifications (e.g., employment per ILO/ICLS, updated poverty lines).
- ✓ Leads **standardization** of key socio-economic variables across agencies.
- ✓ **Population projections** revised after every census for better planning.
- ✓ **International migration data**: One Data initiative to monitor departures/returns and support anti-trafficking policies.
- ✓ **Time Use Survey**: full rollout planned for **2026**.





Challenges in Social and Demographic Statistics

Strengthening Coverage, Integration, and Global Comparability



Key Challenges

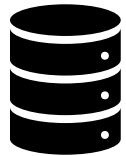
- **Admin Data Reporting:** Coverage and timeliness of birth, death, and migration data need improvement.
- **Data Integration:** Requires stronger regulations, personal data protection, and standardized data/metadata across agencies.
- **New Concepts:** Adoption of sensitive concepts must be transparent to build public trust.
- **Longitudinal Data:** Difficult to collect nationwide due to Indonesia's size, geography, and diverse social characteristics.



What Next?

Strengthening National Statistical Capacity

Key initiatives for Data Driven Policy



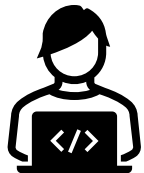
Strengthening Data Integration: Expand administrative data coverage and accuracy; enhance inter-agency collaboration. (e.g., *Single National Socio-Economic Data / DTSEN*)



Innovative Methods: Apply big data to boost accuracy and timeliness.



Technology Utilization: Optimize **online data collection** for faster data collection and transmission.



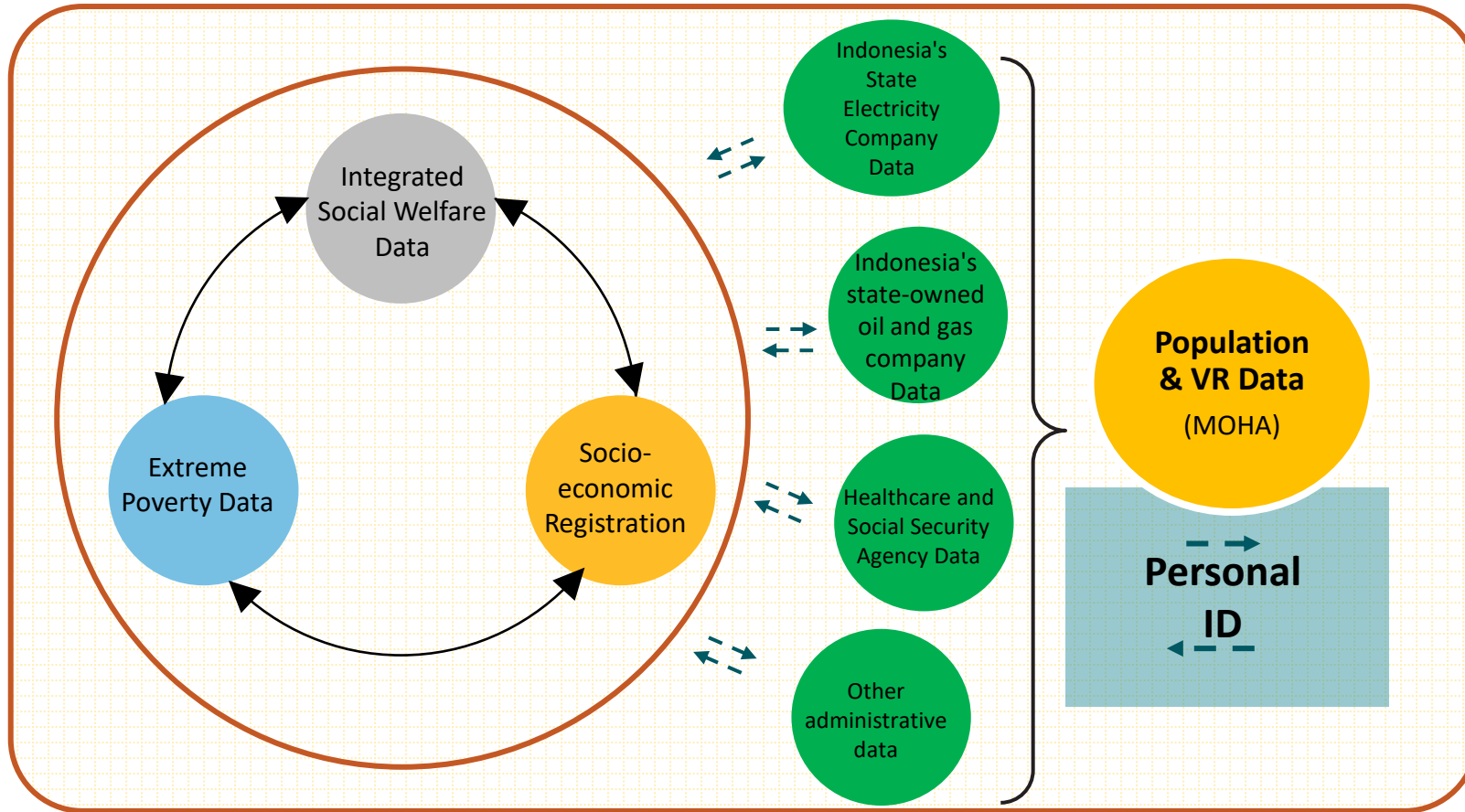
Capacity & Infrastructure: Invest in IT systems and continuous staff training.



Building Trust: Enhance credibility of official statistics for public confidence.

Single National Socio-Economic Data (DTSEN)

Sustainably Managed Single Data for Policy Making



Single National Socio-Economic Data (**DTSEN**)

- ❖ DTSEN is designed to be **periodically updated** as a database for implementing government programs related to poverty alleviation, housing, etc.
- ❖ The data coverage **continues to be expanded** through collaboration with various administrative data sources.
- ❖ In the demographic context, **birth, death, and population migration data can also be updated** with Personal ID serving as the primary key.
- ❖ DTSEN can be used as an option for compiling a **population register**.

Note:

↔ Data unification

↔ Data enrichment and validation

BPS–Statistics Indonesia and the Global Agenda

Aligning with International Standards



- ❖ Our framework helps us align with global agendas, such as the **Sustainable Development Goals (SDGs)**.
- ❖ Harmonizing our national definitions and data collection frequencies with **international standards** is crucial.
- ❖ This enables us to produce **comparable data** for global monitoring and reporting.
- ❖ We are an active participant in UN forums to **contribute to this global harmonization effort** and share our best practices.

***Penyedia Data Statistik Berkualitas
untuk Indonesia Maju***

***Provider of Quality Statistical Data
for Advanced Indonesia***

***Terima Kasih
Thank You***

www.bps.go.id

