

Carrie Exton | Senior Counsellor and Deputy Director

WISE – the OECD Centre for Well-Being, Inclusion, Sustainability and Equal Opportunity

Measuring well-being outcomes by gender

IAEG-GS 18th meeting

Session 4. Pact of the Future and gender statistics

5 December 2025



Gender mainstreamed across OECD WISE's mission

Measuring what matters

- Well-being **beyond GDP**
- **Inclusion, social mobility and equality of opportunity**
- Impact, including for the private sector
- Measuring distance to the **SDG** targets

People-centred policies

- **Advancing policy tools** for sustainable, inclusive well-being
- Well-being and inclusion at the heart of **ecological, digital and demographic transitions**
- Giving all **children** a good start in life
- New evidence and policy solutions to tackle **discrimination, structural and emerging inequalities**

Support to countries

- **Knowledge Exchange Platform** on Well-being Metrics and Policy Practice
- **Observatory** on Social Mobility and Equal Opportunity
- **Tailored** country analysis, profiles and reports
- **Technical** support



OECD Well-being Framework (2011)

Multidimensionality

Economic, social, environmental; both household/community and system-level; objective and subjective

Inclusion

Distribution, inequalities and deprivations

Sustainability

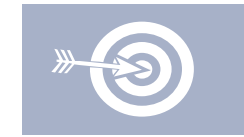
Long-term drivers of well-being (resources/capitals) to monitor, prevent and invest for current and future generations

CURRENT WELL-BEING

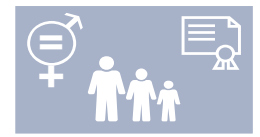
Key dimensions



How we measure them



Averages



Inequalities between groups



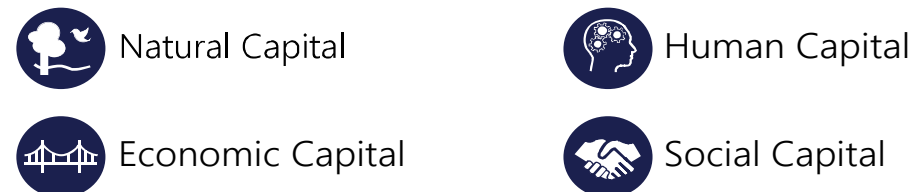
Inequalities between top and bottom performers



Deprivations

RESOURCES FOR FUTURE WELL-BEING

Key dimensions



How we measure them



Stocks



Flows



Risk factors



Resilience

How's Life? 2024

Well-being and resilience in times of crisis



How's Life? 2024

WELL-BEING AND RESILIENCE IN TIMES OF CRISIS



How's Life? 2024. WELL-BEING AND RESILIENCE IN TIMES OF CRISIS



Assessing crises recovery requires going beyond the economy.



Stronger action is needed to maintain today's well-being for future generations.



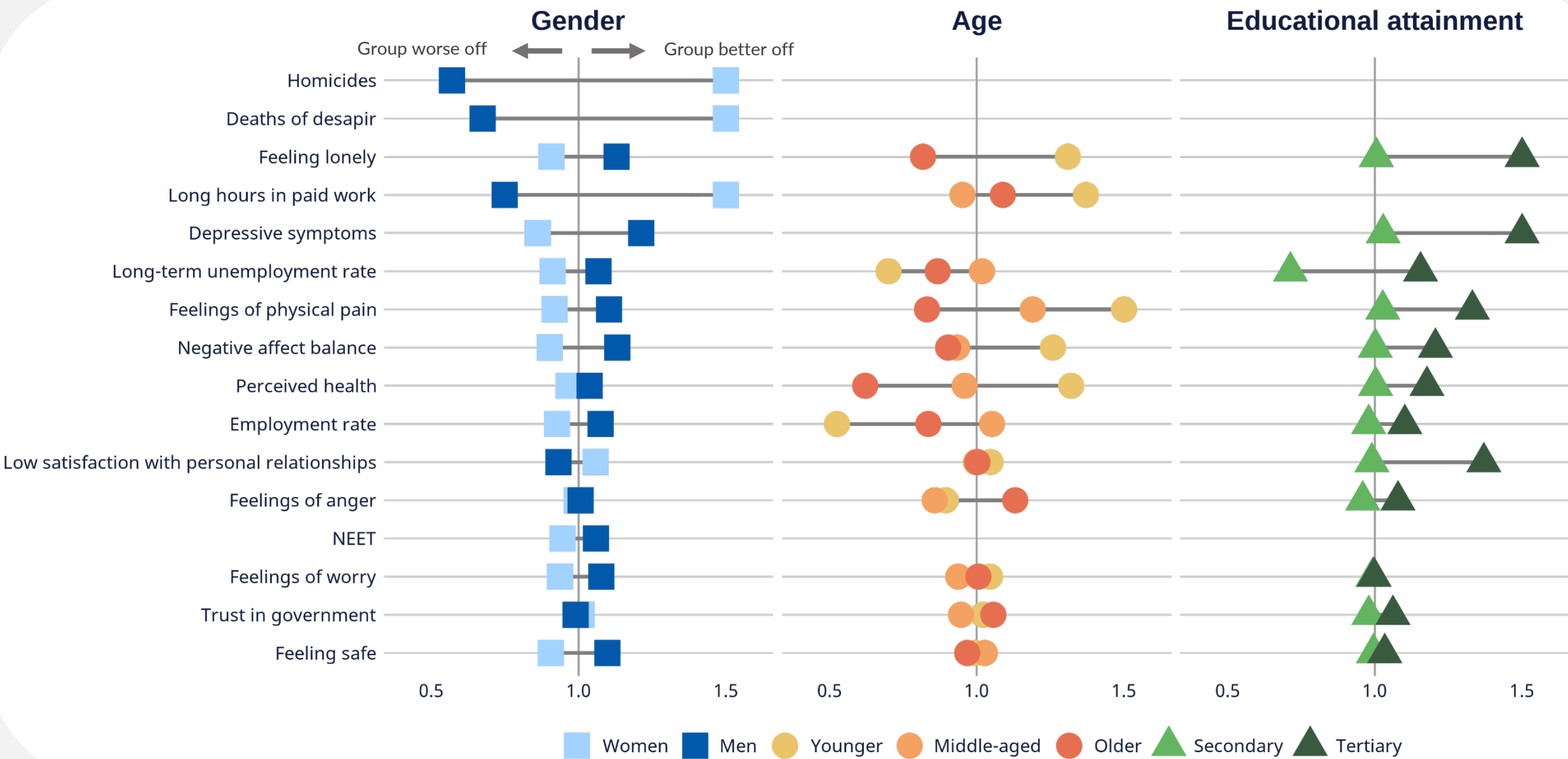
Inequalities in well-being by **GENDER**, age and education remain large, though many gaps have narrowed since 2010.



A multidimensional, people-focused and forward-looking well-being approach can help navigate an increasingly complex world.

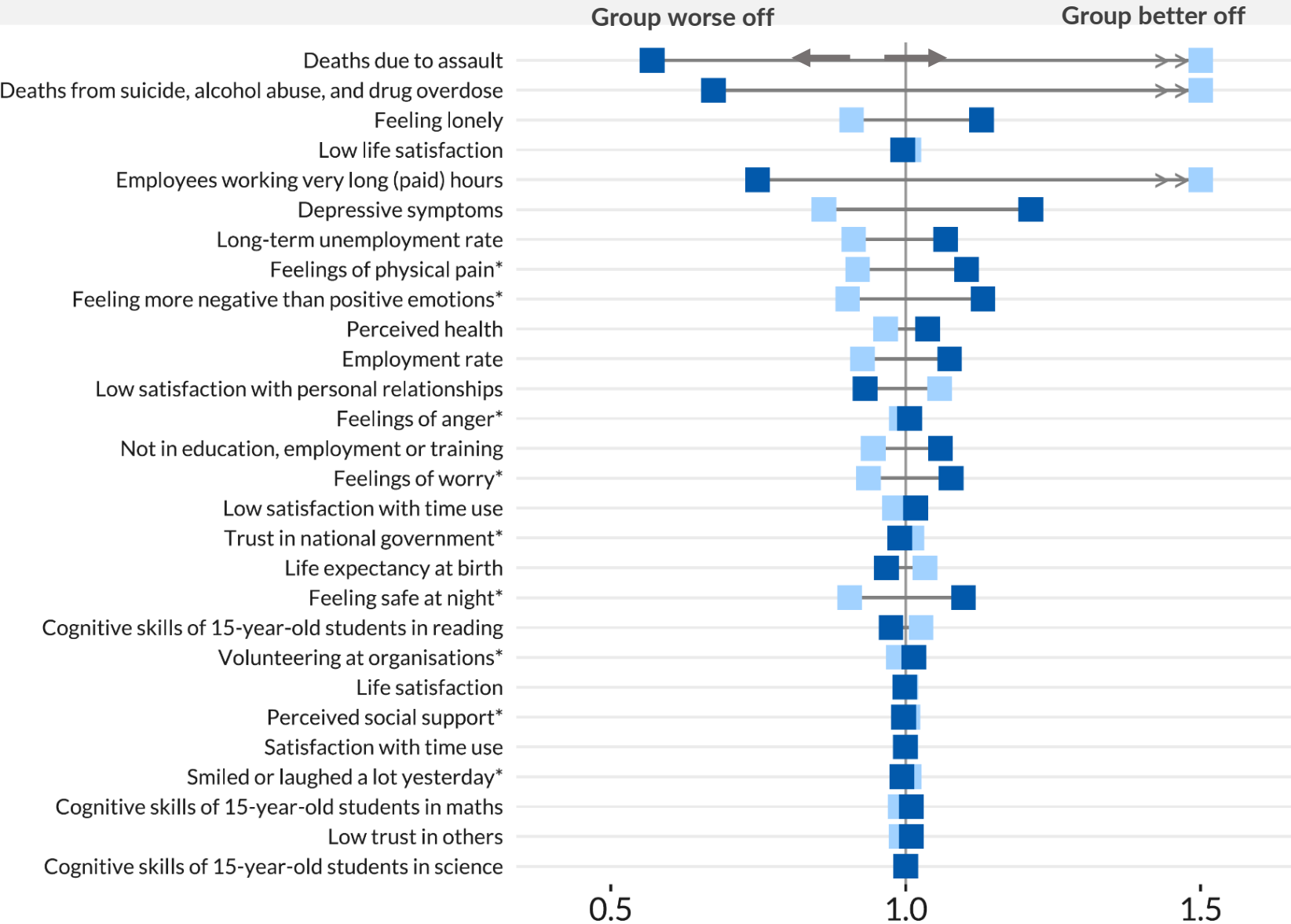
Well-being inequalities by gender, age and education are pronounced

Distance from parity with the population average for selected well-being outcomes, 2023 or latest available year, OECD average



Current well-being outcomes of women and men

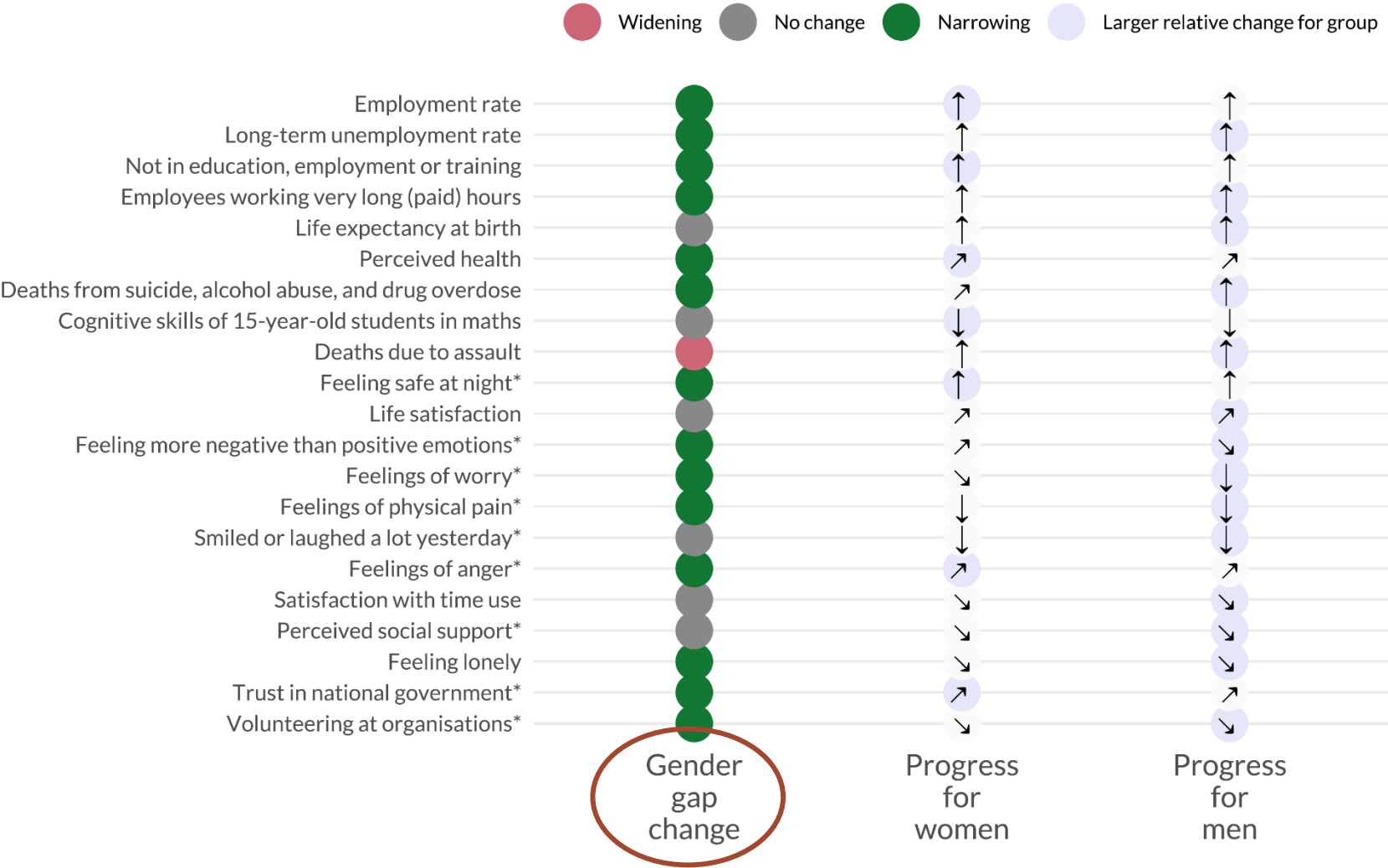
Distance from parity with the population average for selected well-being outcomes, by gender, 2023 or latest available year, OECD average



Note: Values refer to the ratio of outcomes for a specific population group relative to the population average. Indicators are scored relative to their direction for well-being. In order to show the gap size for all indicators, ratios that fall outside of the figure's scale are set to 0.5 or 1.5 and are marked by << or >>. Indicators marked with * refer to data pooled over different time periods for gender (2 or 3-year bands).

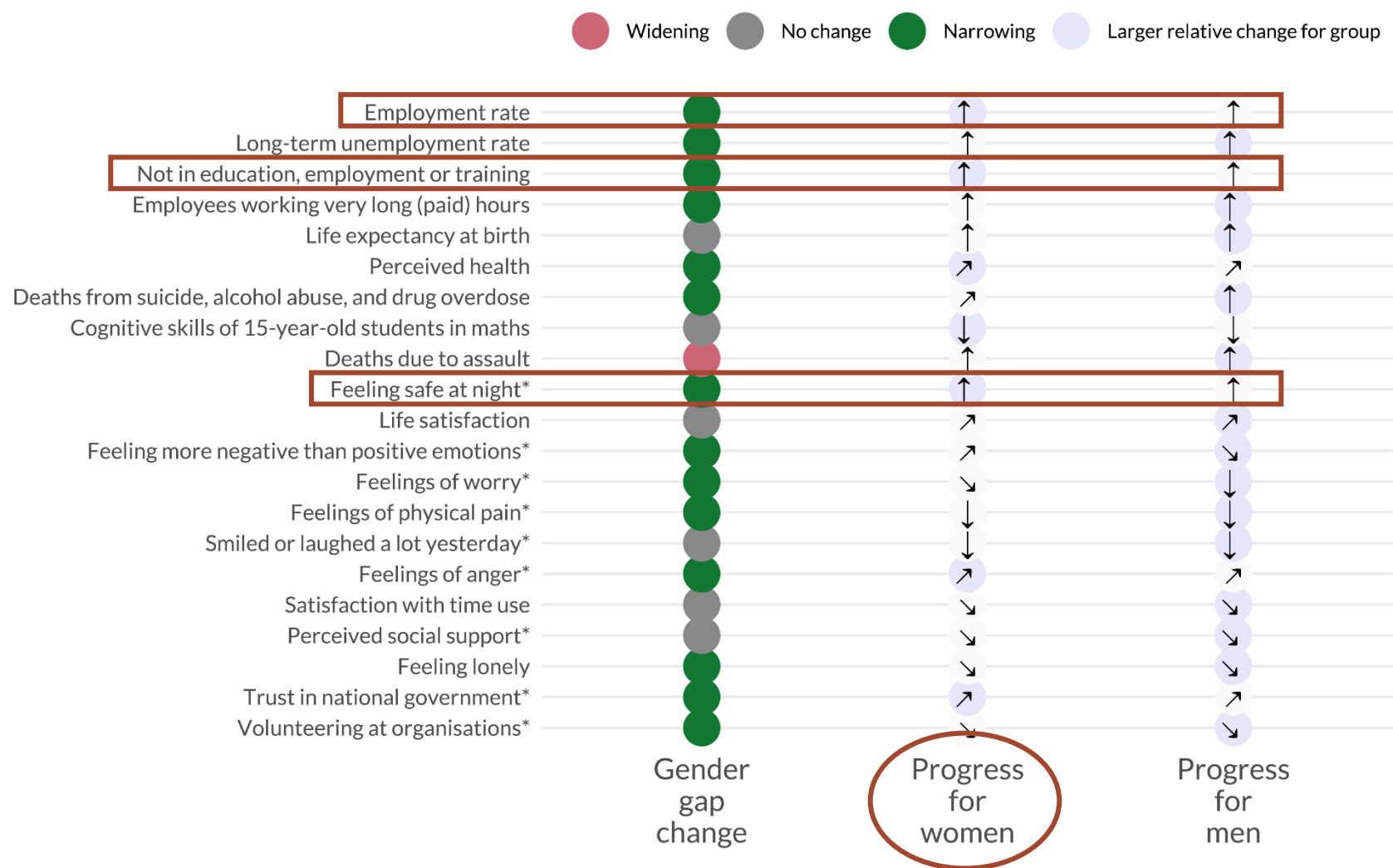
Change in gender-related well-being inequalities over the past decade

Progress in well-being outcomes by gender and resulting changes in the gender gap since 2010 until 2023 or the latest available year, OECD average



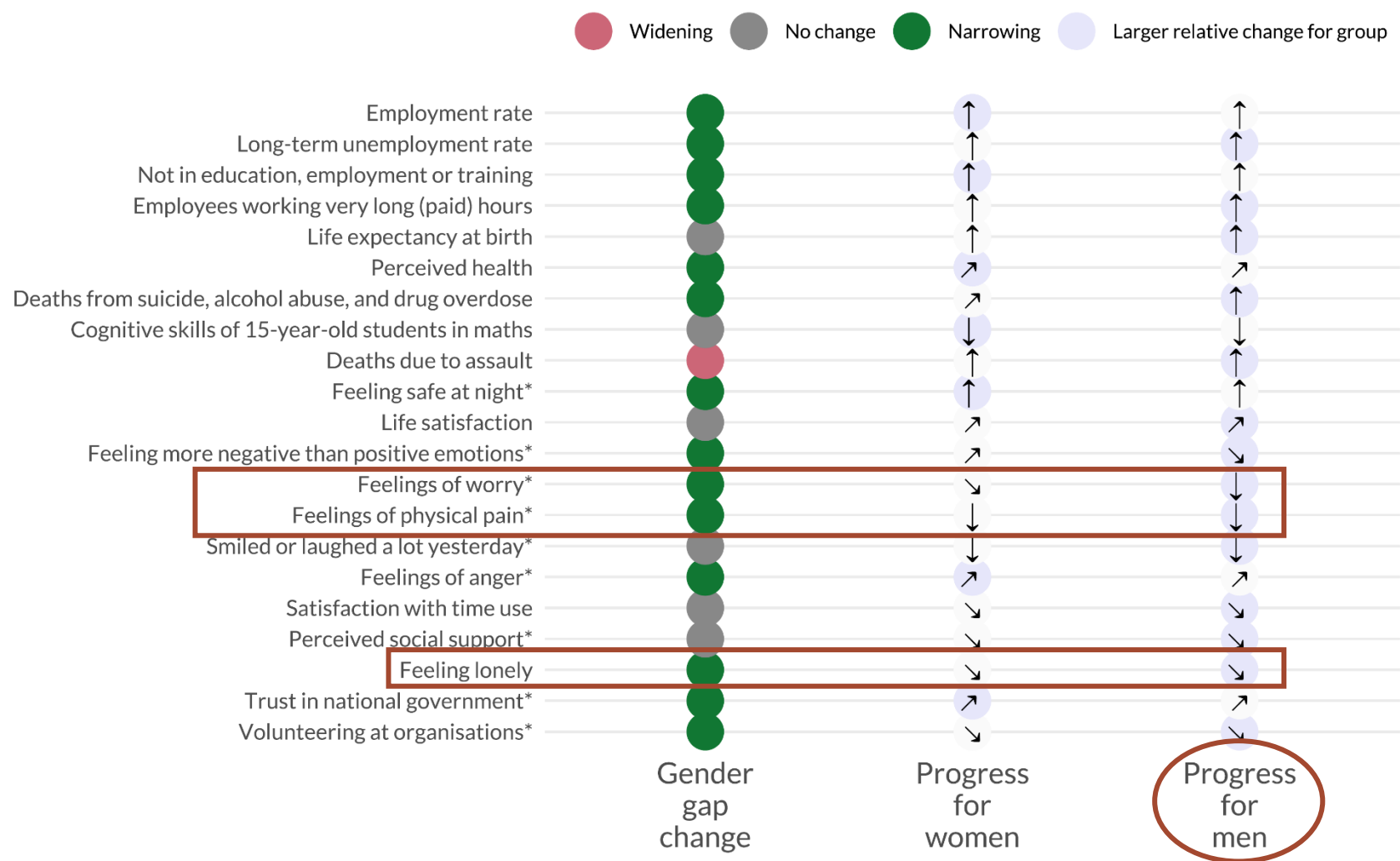
Note: The gap change columns show the development of the ratio between population groups since 2010 until the latest available year. It is classified as either widening or narrowing if a change of at least ± 0.01 points in the ratio between groups has occurred for a specific indicator. The progress columns show the direction of progress made since 2010 until the latest available year for each population group: \uparrow signifies improvement and \downarrow signifies deterioration with respect to indicator-specific thresholds for meaningful change (see *How's Life? 2024 Reader's Guide* for more details) whereas 45 degree arrows (\nearrow and \searrow) denote the relative direction of progress in cases where change was still below a threshold that would be considered meaningful. A shaded arrow cell means the respective change for one group was comparatively larger than for peer groups. Indicators marked with * refer to data pooled over different time periods for gender (2 or 3-year bands).

Change in gender-related well-being inequalities over the past decade



Note: The gap change columns show the development of the ratio between population groups since 2010 until the latest available year. It is classified as either widening or narrowing if a change of at least ±0.01 points in the ratio between groups has occurred for a specific indicator. The progress columns show the direction of progress made since 2010 until the latest available year for each population group: ↑ signifies improvement and ↓ signifies deterioration with respect to indicator-specific thresholds for meaningful change (see *How's Life? 2024 Reader's Guide* for more details) whereas 45 degree arrows (↗ and ↘) denote the relative direction of progress in cases where change was still below a threshold that would be considered meaningful. A shaded arrow cell means the respective change for one group was comparatively larger than for peer groups. Indicators marked with * refer to data pooled over different time periods for gender (2 or 3-year bands).

Change in gender-related well-being inequalities over the past decade



Note: The gap change columns show the development of the ratio between population groups since 2010 until the latest available year. It is classified as either widening or narrowing if a change of at least ± 0.01 points in the ratio between groups has occurred for a specific indicator. The progress columns show the direction of progress made since 2010 until the latest available year for each population group: ↑ signifies improvement and ↓ signifies deterioration with respect to indicator-specific thresholds for meaningful change (see *How's Life? 2024 Reader's Guide* for more details) whereas 45 degree arrows (↗ and ↘) denote the relative direction of progress in cases where change was still below a threshold that would be considered meaningful. A shaded arrow cell means the respective change for one group was comparatively larger than for peer groups. Indicators marked with * refer to data pooled over different time periods for gender (2 or 3-year bands).

How's Life? country notes

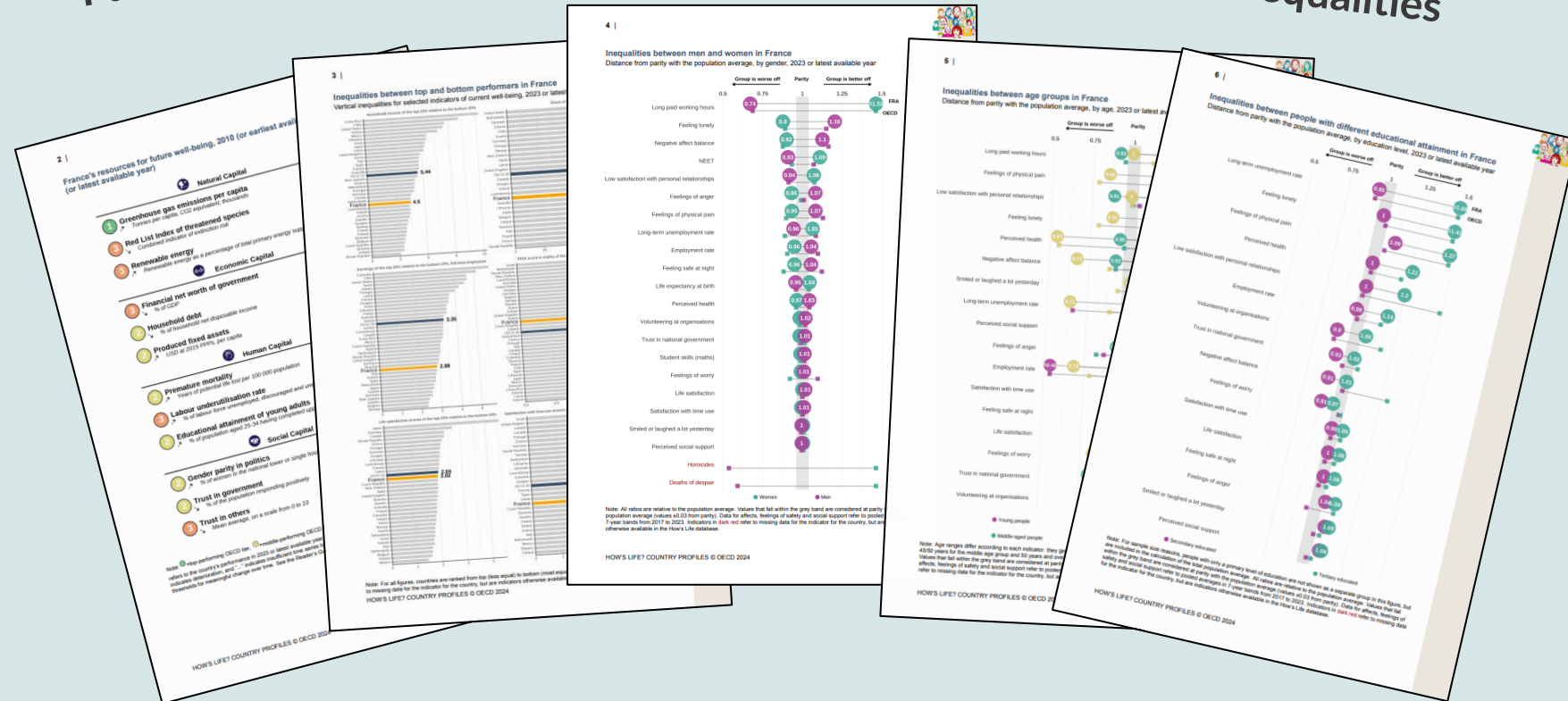
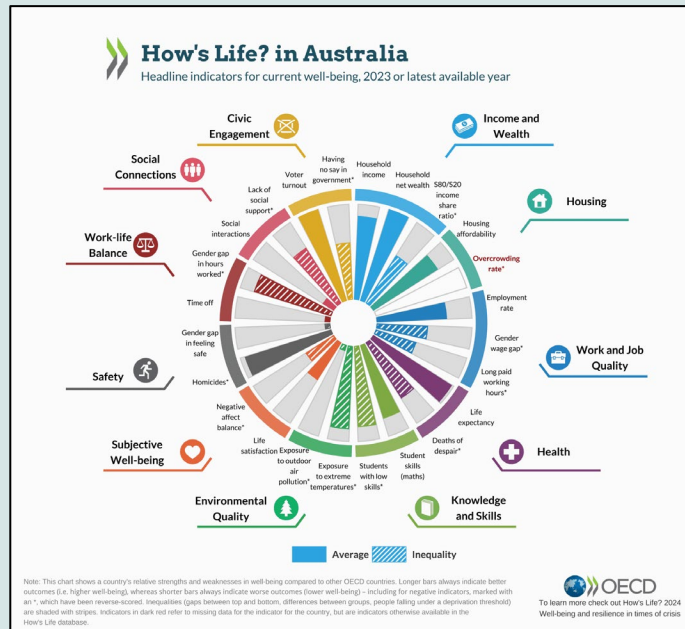
Learn more about well-being in your country

Current well-being

Future well-being

Vertical inequalities

Gender, age and educational attainment inequalities





Now available!

How's Life? report

How's Life Database



Thanks!

carrie.exton@oecd.org