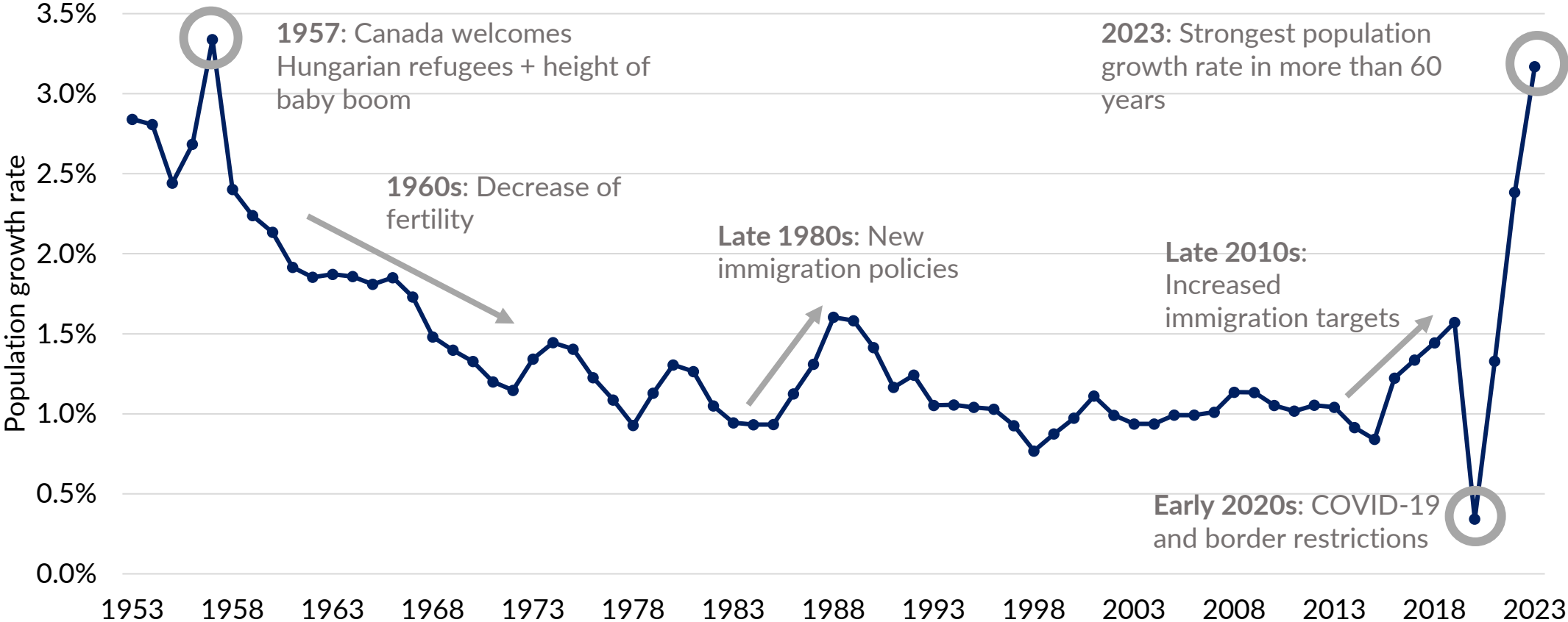


The role of the Census of Population in Canada's Demographic Estimation Program

Statistics Canada presentation to:
The 3rd Expert Group on the Revision of the
Principles and Recommendations for
Population and Housing Censuses



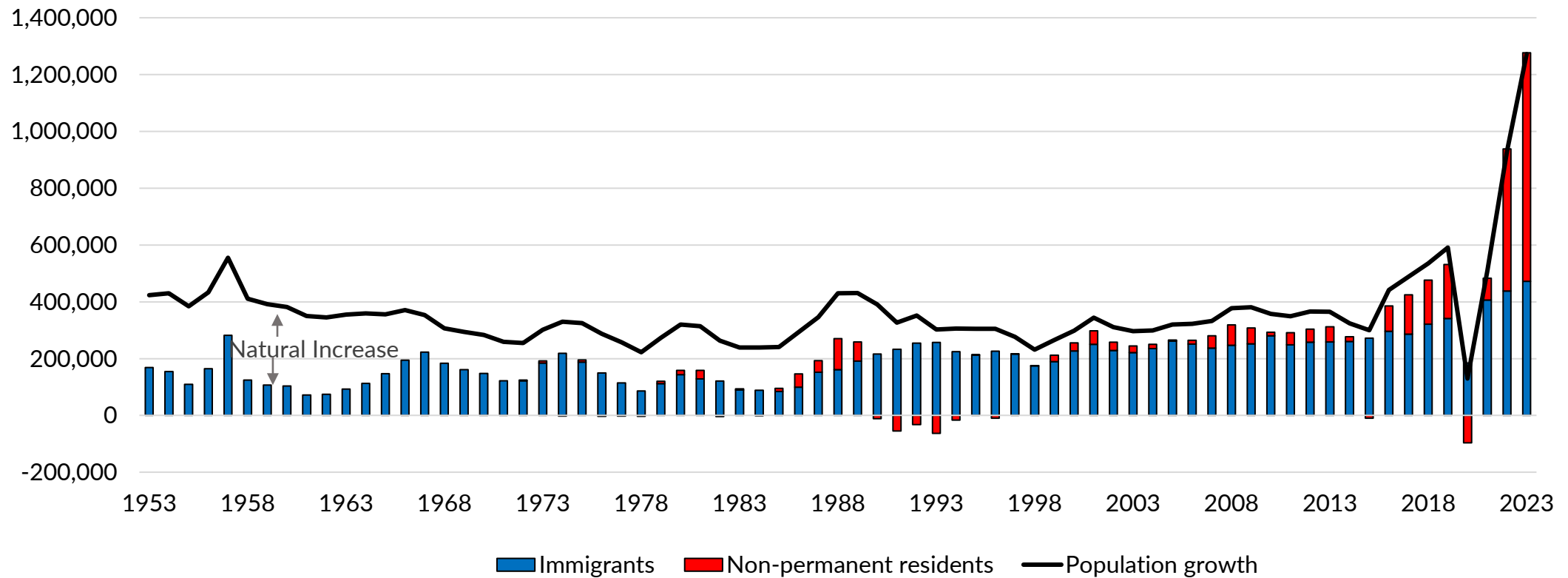
Context: High population growth



Source: Statistics Canada, Demographic Estimates Program



Context: Recent increases in permanent and temporary immigration



Source: Statistics Canada, Demographic Estimates Program

Statistics Canada's Demographic Estimates Program (DEP)

Quarterly and annual estimates of the population between censuses

- National, provincial (10) and territorial (3)
- Sub-provincial areas (eg. Census Metropolitan Areas, Census Divisions)
- Gender and sex at birth
- Components of population growth

Legislative requirements, e.g.:

- Federal – Provincial Fiscal Arrangements Act (Population certificates on June 1st every year, provided to Finance Canada)
- Fair Representation Act

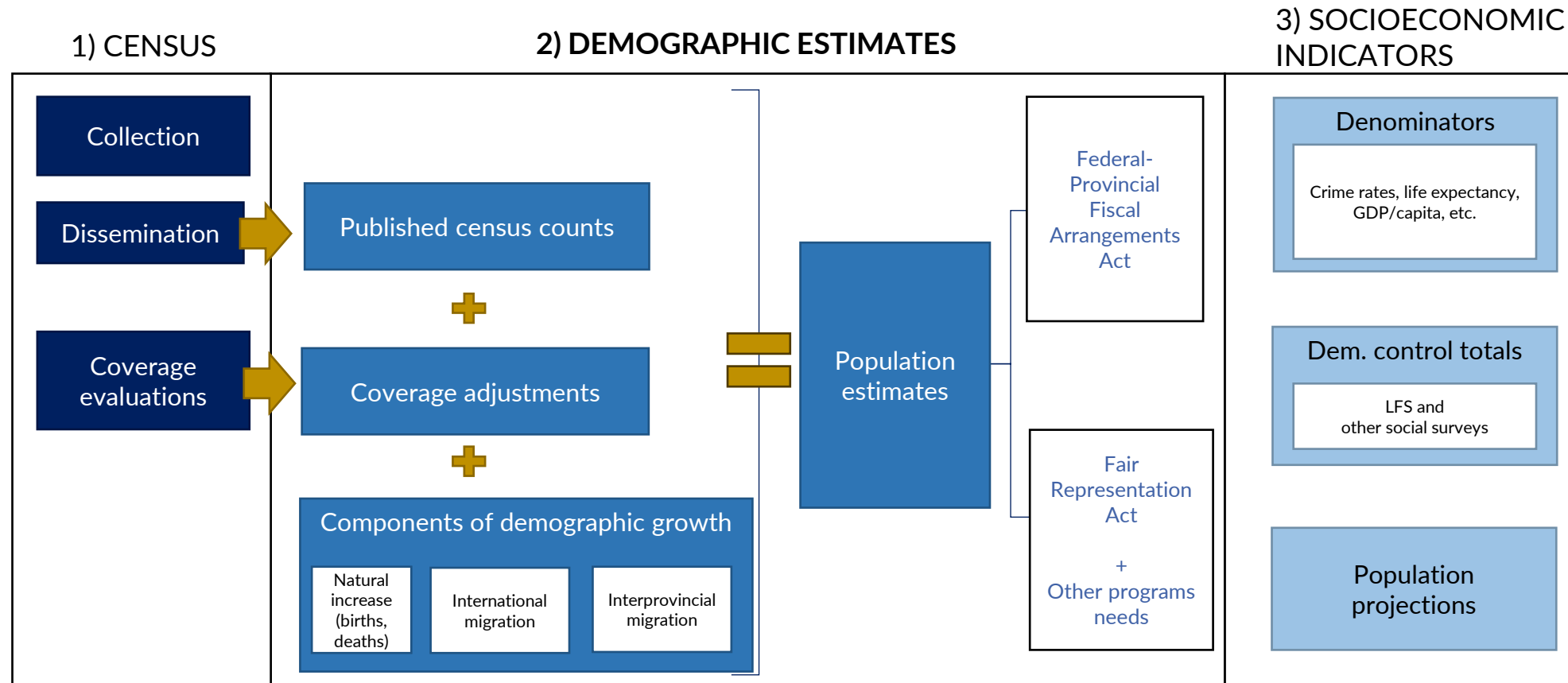
Other needs at Statistics Canada

- Total controls for social surveys including the mission-critical monthly Labour Force Survey
- Provides denominators for several key social and economic indicators such as GDP per capita, crime and health statistics, etc.

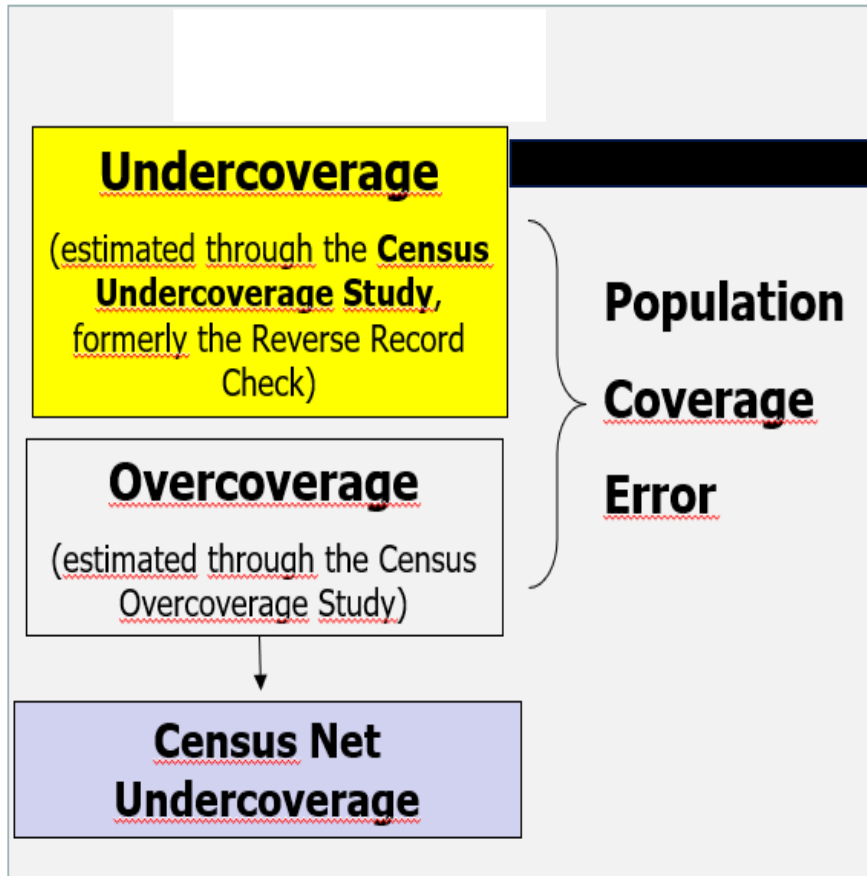
Serves as the starting point for annual population projections



Census of Population and subsequent coverage studies forms the basis of the Canadian Demographic Estimation Program



2021 Census Undercoverage Study



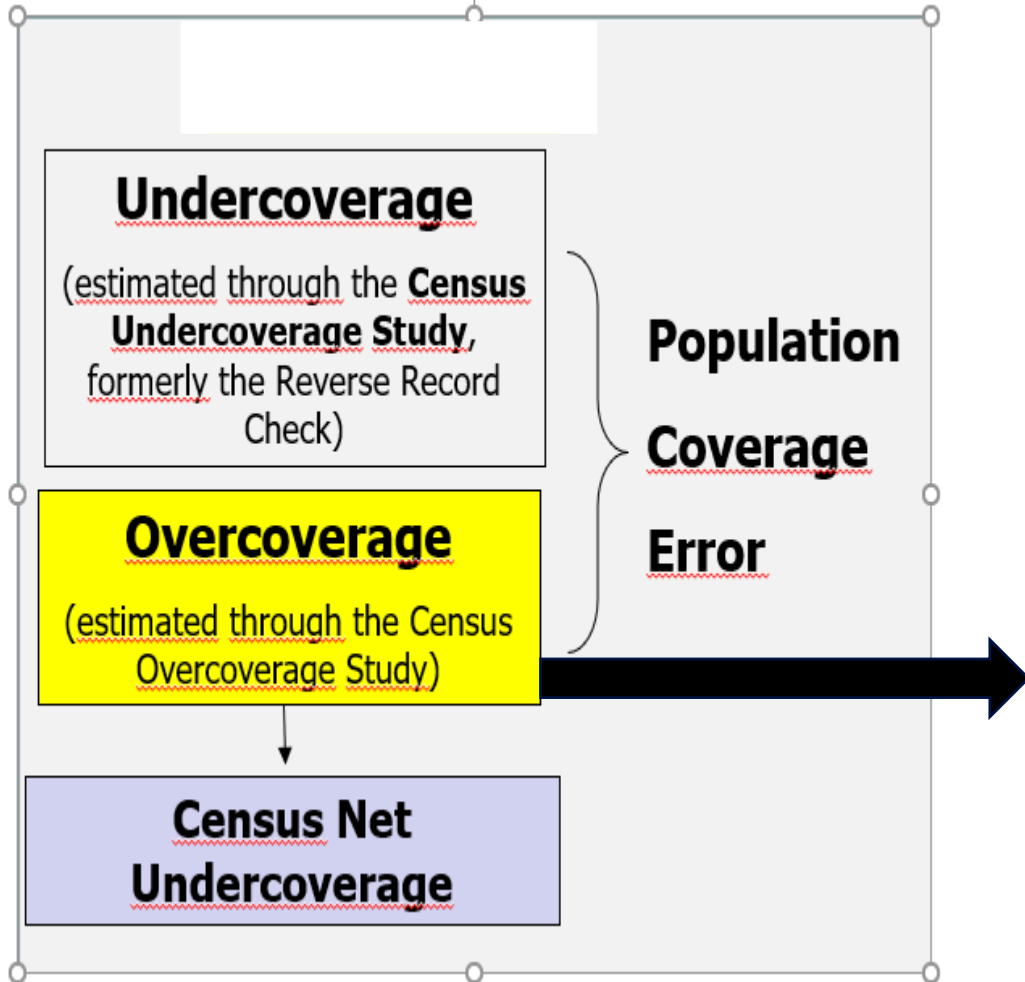
Goal:

- To estimate the number of persons in the 2021 Census Target Population who were not enumerated

How:

- A sample of 40,000 persons are selected from frames independent of the census – those not linked to the Census are sent for field verification (13,000)

2021 Census Overcoverage Study



Goal:

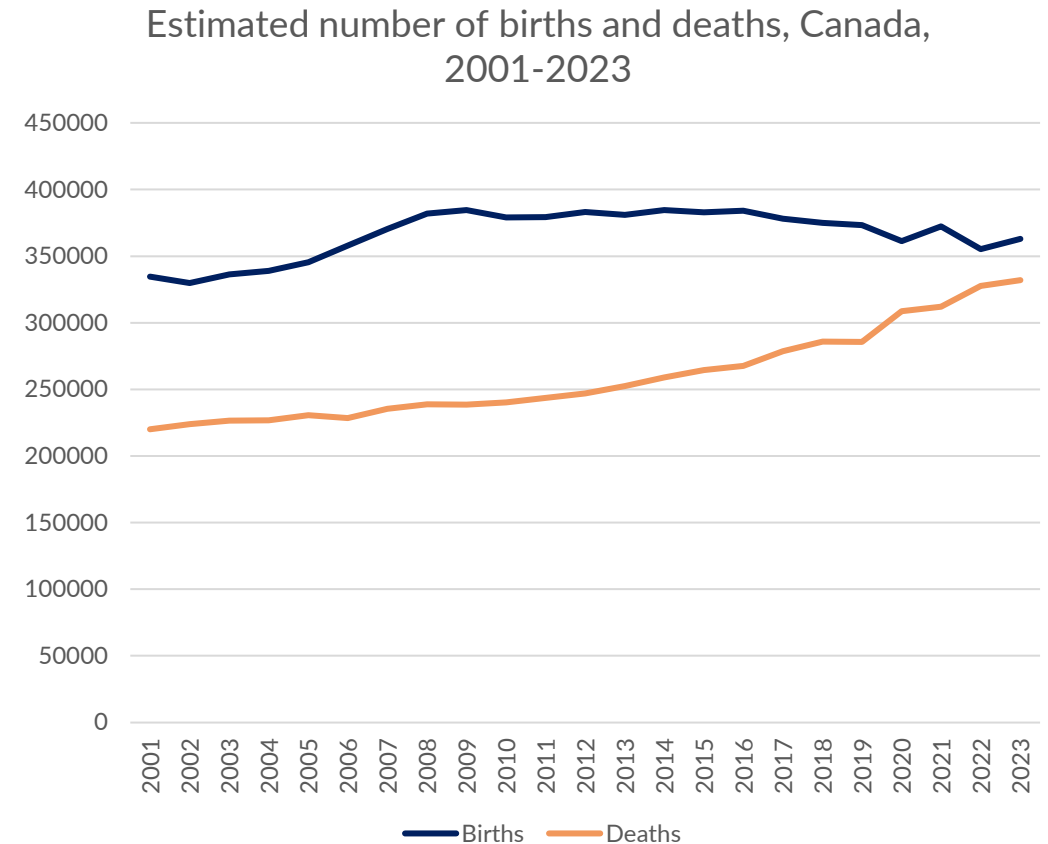
- To estimate the overcoverage caused by persons enumerated more than once in the census

How:

- Linkages of the Census database to itself and external admin data are conducted to identify potential duplicate records
- Sampled potential duplicates are reviewed
- Results from manual verification are weighted to estimate provincial/territorial overcoverage

Components of population growth from the Demographic Estimates Program

- The DEP releases data on estimated components of population growth: births, deaths, permanent immigrants, non-permanent residents, emigrants, returning emigrants, in-migrants, and out-migrants
- Allows to monitor trends in Canadian demographics such as contribution of natural increase (births minus deaths) to population growth
- Timely in case of unexpected situations (trends in number of deaths during the COVID-19 pandemic)



Statistics Canada's Demographic Estimates Program (DEP)

Very high quality

- Estimates are benchmarked following every census
- Differences between estimates and new census + coverage adjustments < 1% for the majority of provinces and territories
- Very high quality of the estimates during cycle 2016-2021 despite the COVID-19 pandemic

Methods are updated on a on-going basis

- Always looking for new/additional data sources
- Collaboration with international partners such as other NSOs to enrich the program

Population estimates for the Labour Force Survey (LFS) and other household surveys

- Used as total controls to weight the LFS sample on a monthly basis
- Estimates for LFS and other household surveys differ from main estimates:
 - Exclude 4 specific populations: persons living on reserves and other Indigenous communities in the provinces; full-time members of the Canadian Armed Forces; the institutionalized population; and households in extremely remote areas with very low population density
 - Methods are adjusted for a monthly production and to meet the survey's goals

