



United Nations

Department of
Economic and
Social Affairs

World Population Prospects 2022: the effects of the pandemic on census results and its comparability overtime

UNSD Third United Nations Expert Group Meeting on the Impact of the Covid-19 Pandemic on Conducting Population and Housing Censuses and Addressing Census Data Quality Concerns



New York, 13 December 2022, CR 8, UNHQ

Population empirical data availability status

(as of Feb. 2022 for *World Population Prospects 2022* released on 11 July)

- Number of countries/areas by latest available year of census since 2000

SDG Region	2001	2002	2003	2004	2005	2006	2007	2008	2009	2010	2011	2012	2013	2014	2015	2016	2017	2018	2019	2020	2021
Sub-Saharan Africa			1		1	1	2	3	4	3	4	5	5	4	3	1	5	2	2	1	
Northern Africa and Western Asia				3	1	1		2	2	1	3			4	1		2			2	2
Central and Southern Asia									1	1	2	2		1		1	2	1			1
Eastern and South-Eastern Asia								1		1	1			1	2	1			2	8	2
Latin America and the Caribbean			1		1		1			9	7	6	1				5	2		4	1
Oceania (excluding Australia and New Zealand)									1	1	1					3	2		1	2	
Europe and Northern America	1	1								2	13			1	1	2	1		1	19	2
Australia/New Zealand																					2
Total (n=197)	1	1	2	3	3	2	3	6	8	18	31	13	7	11	8	7	16	5	6	38	8
	100%	99%	99%	98%	96%	95%	94%	92%	89%	85%	76%	60%	54%	50%	45%	41%	37%	29%	26%	23%	4%

- Lebanon (NA), Afghanistan (1979), DRC (1984), Eritrea (1984), Iraq (1997), Somalia (1987), Uzbekistan (1989)

See [World Population Prospects 2022: Methodology of the United Nations Population Estimates and Projections](#) for further details + [structured metadata](#) for data sources and estimation methods

Population census data availability status

(as of Feb. 2022 for *World Population Prospects 2022* released on 11 July)

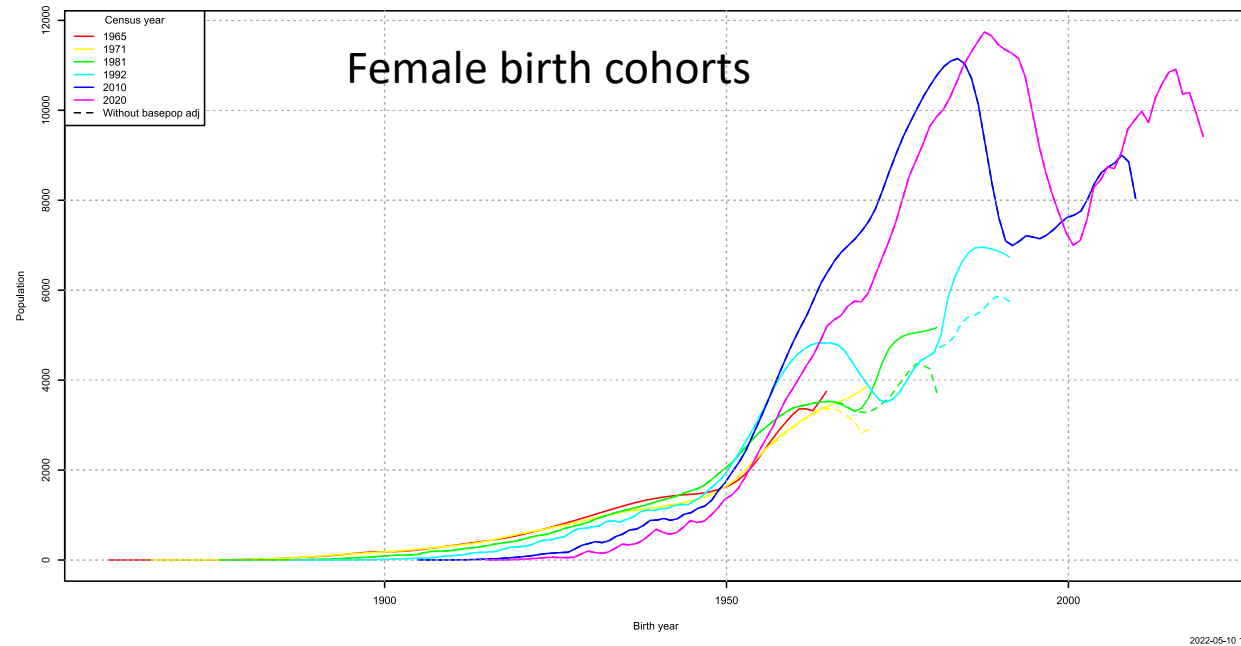
Location (n=18)	Year	Age distribution	Open age group
Aruba	2020	five_year	95
Bahrain	2020	single	95
Cayman Islands	2021	five_year	70
China	2020	single	100
China, Macao SAR	2021	abridged	85
Czechia	2021	single	100
Indonesia	2020	single	100
Isle of Man	2021	single	95
Liechtenstein	2020	single	100
Mexico	2020	single	100
Mongolia	2020	single	100
Oman	2020	single	100
Qatar	2020	five_year	80
Republic of Korea	2020	single	100
Saint Helena	2021	single	90
Slovenia	2021	single	100
Turkiye	2021	five_year	90
United States of America	2020	single	85

Total population only (provisional)

Location (n=13)	Year
American Samoa	2020
Brunei Darussalam	2021
Ghana	2021
Grenada	2022
Guam	2020
Kazakhstan	2021
Malaysia	2020
Marshall Islands	2021
Nepal	2021
Northern Mariana Islands	2020
Philippines	2020
Puerto Rico	2020
United States Virgin Islands	2020

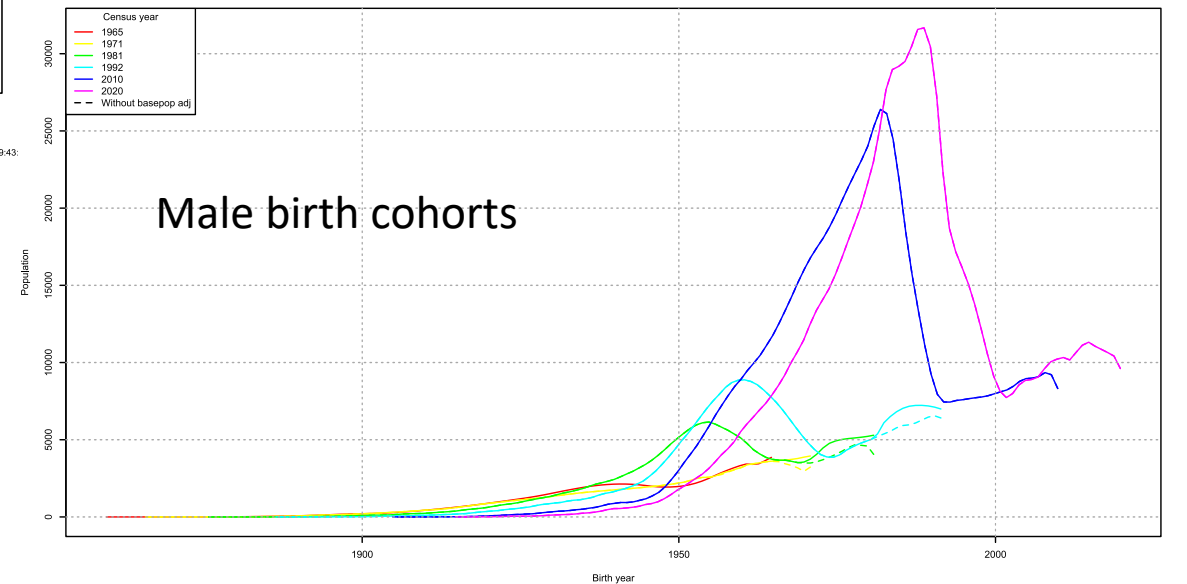
Bahrain 2020 census age structure by sex

Female birth cohorts



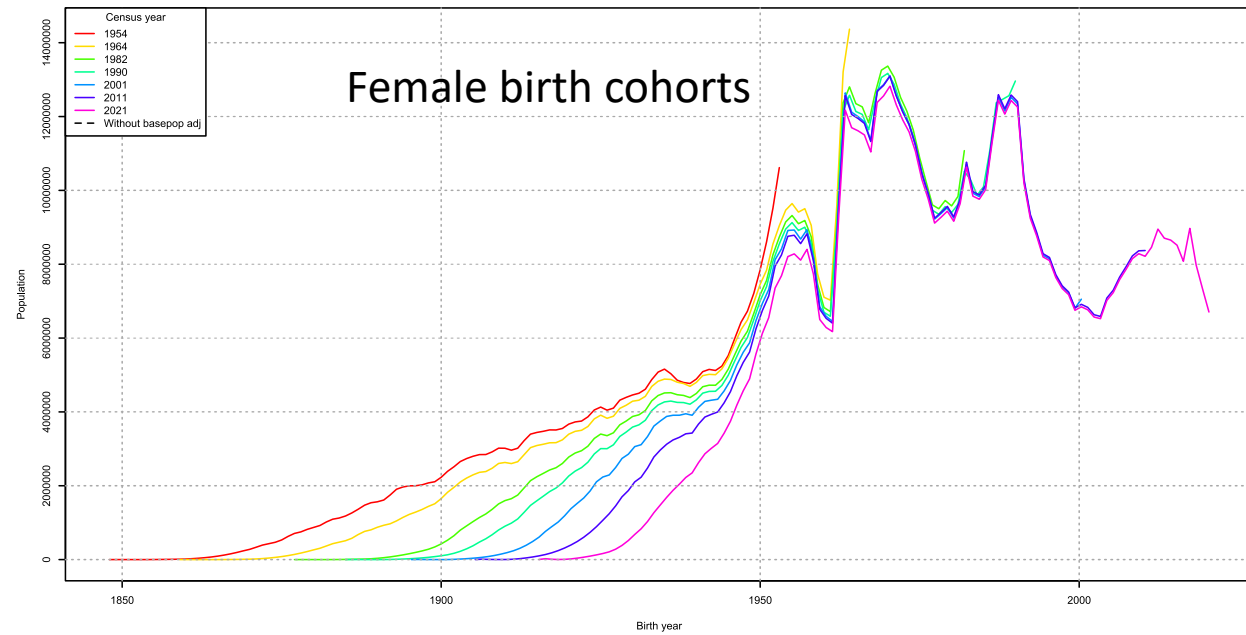
Consistent with previous censuses by birth cohorts

Male birth cohorts



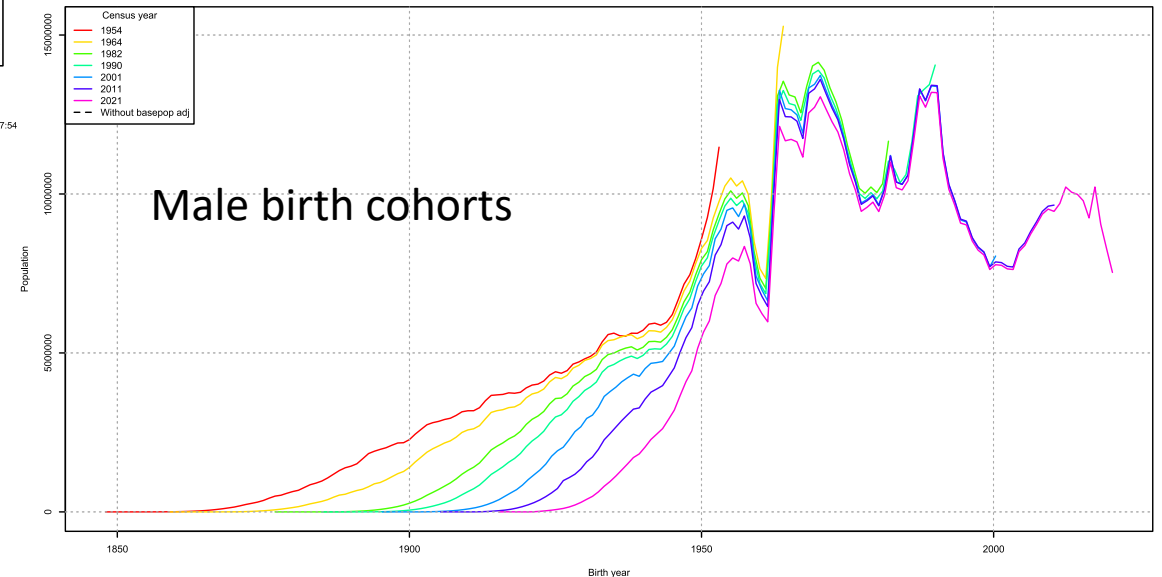
China 2020 census age structure by sex

Female birth cohorts

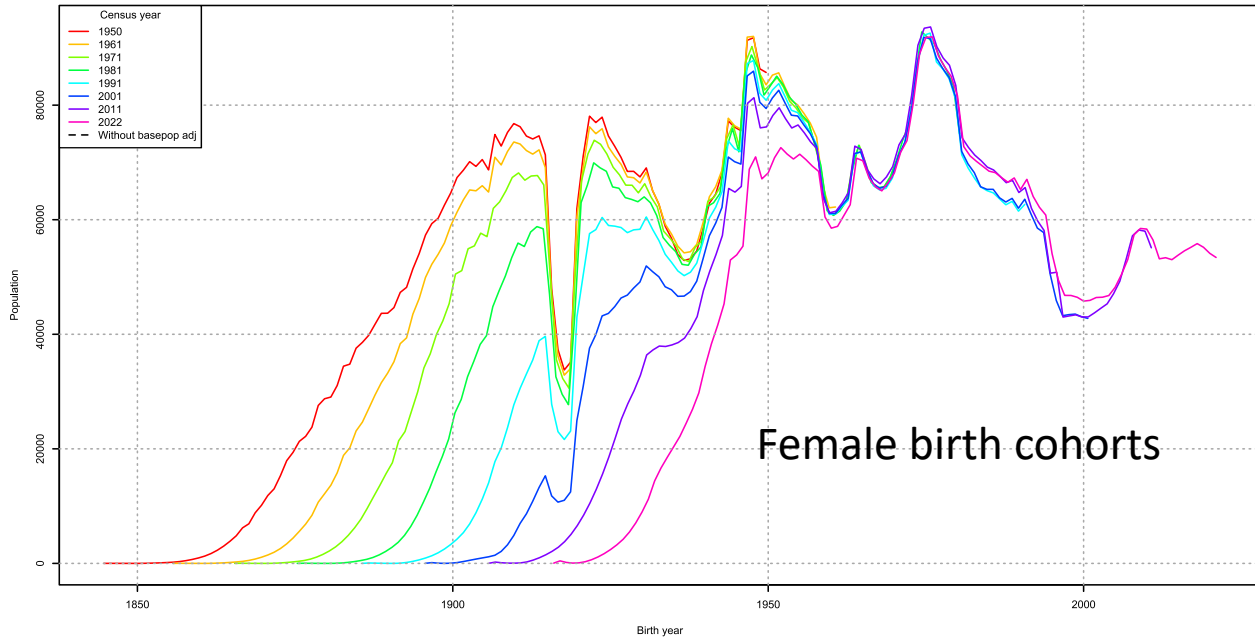


Consistent with previous censuses by birth cohorts, and intercensal demographic components of population change (fertility, mortality, net international migrations)

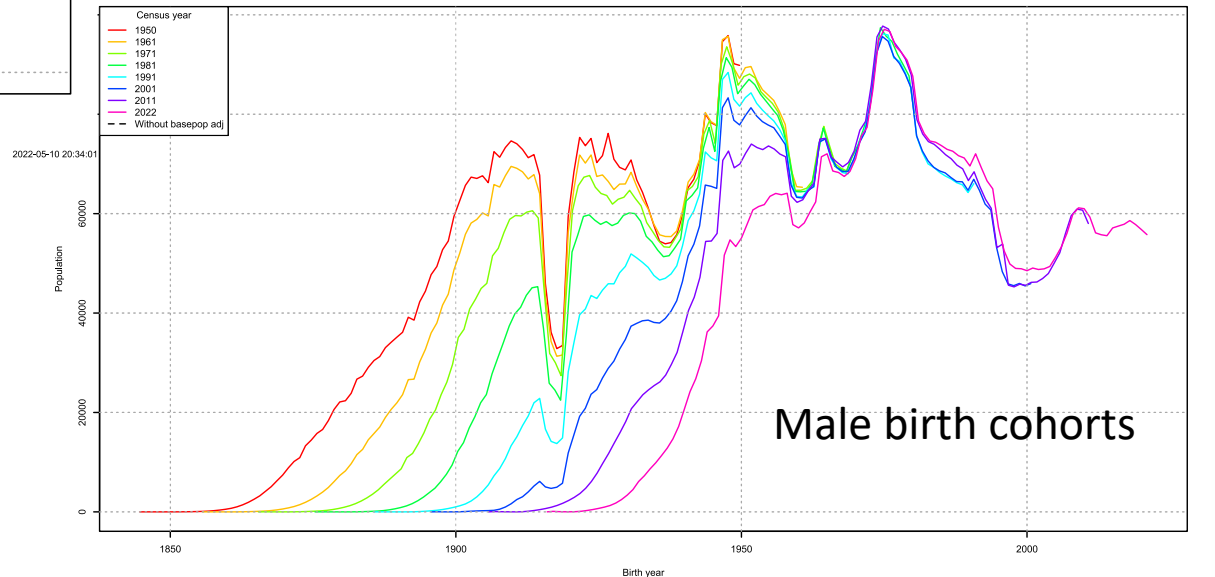
Male birth cohorts



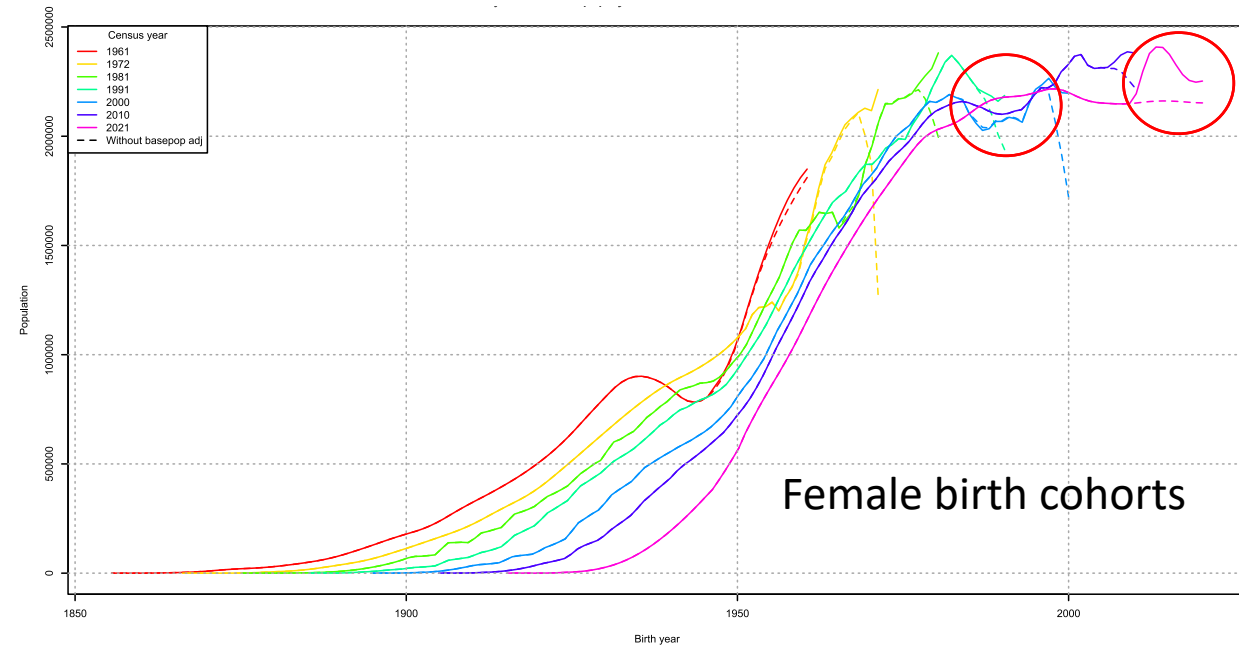
Czechia 2021 census age structure by sex



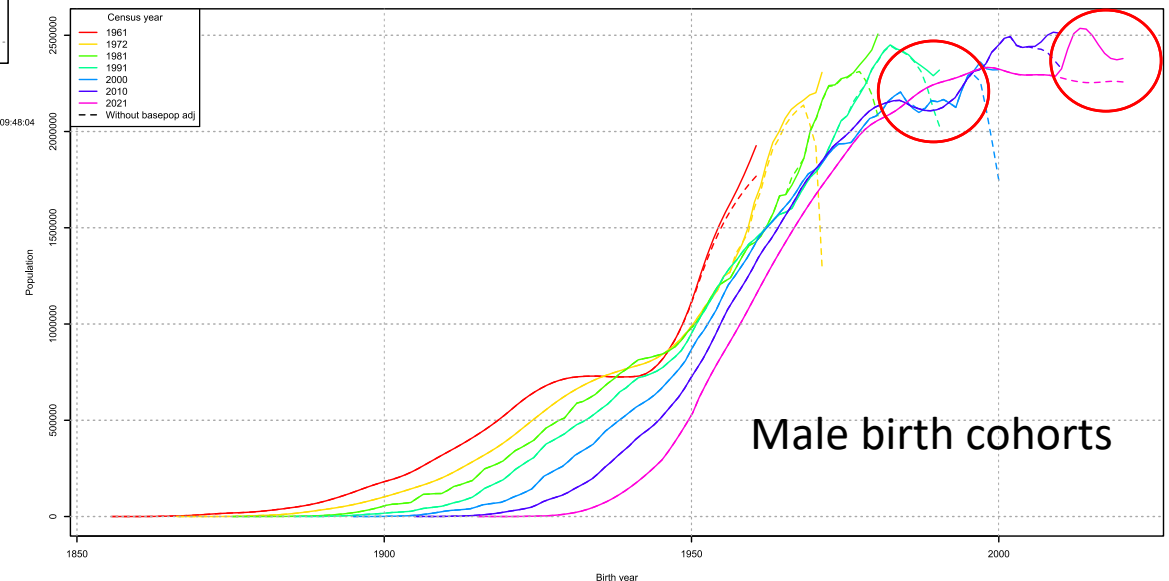
Consistent with previous censuses by birth cohorts, and intercensal demographic components of population change (fertility, mortality, net international migrations)



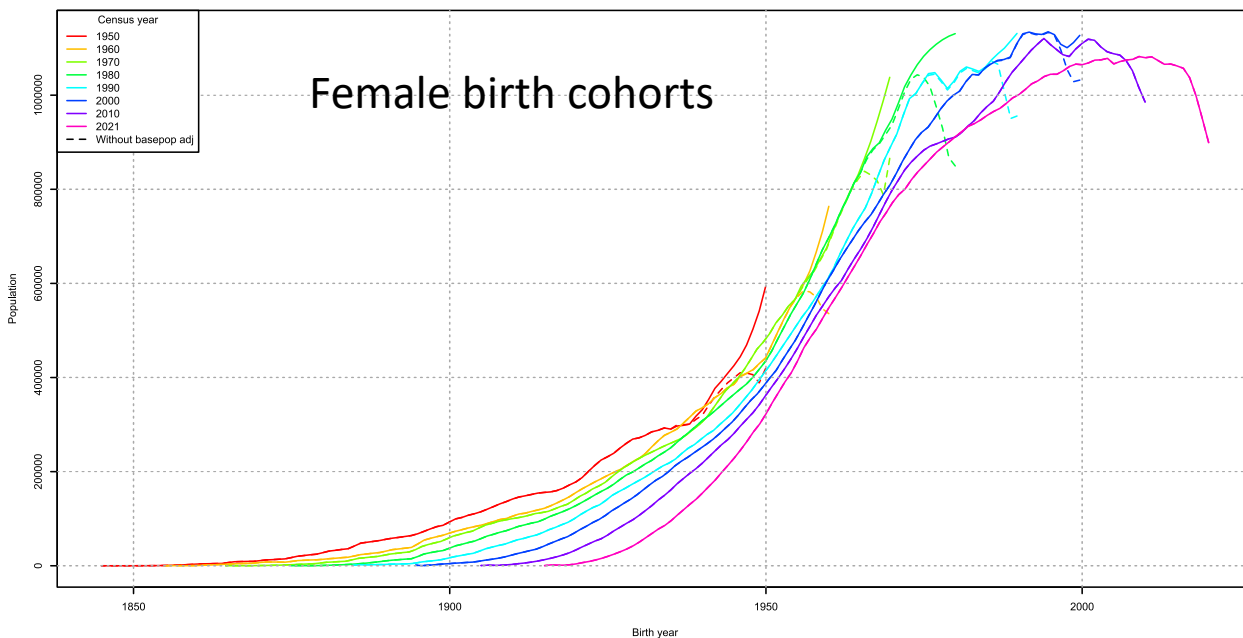
Indonesia 2020 census age structure by sex



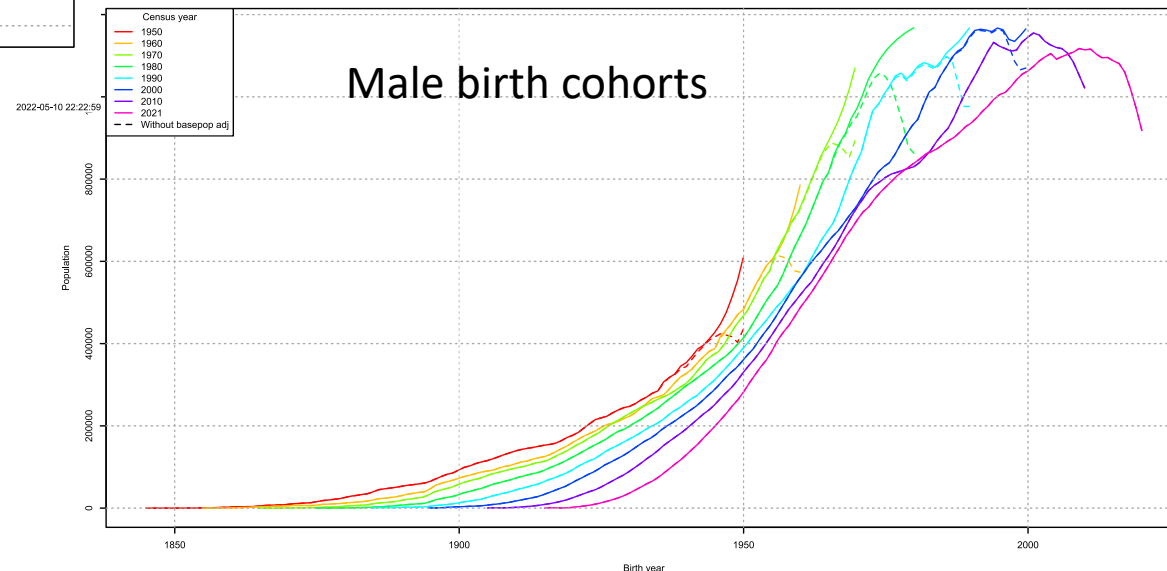
Overall consistent with previous censuses by birth cohorts,
But **under-enumeration of young children** and **potential over-count of young adults (25-34)** based on intercensal demographic components of population change (fertility, mortality, net international migrations)



Mexico 2020 census age structure by sex

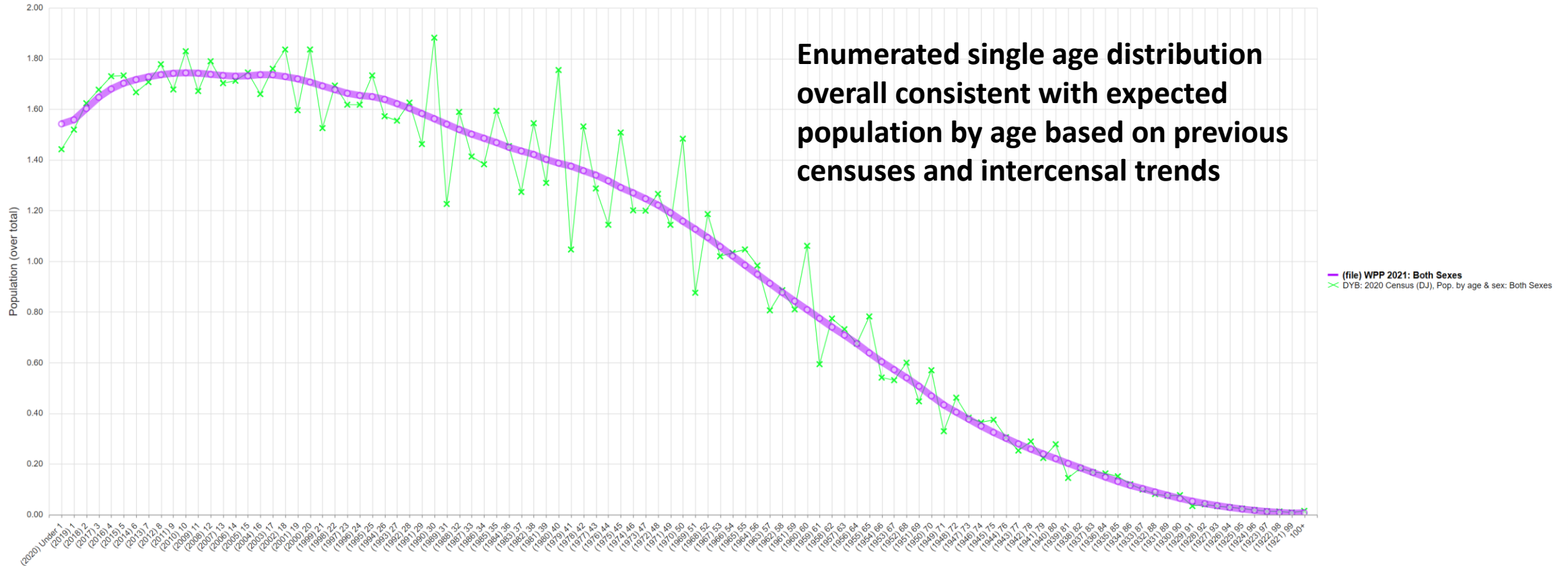


Consistent with previous censuses by birth cohorts, and intercensal demographic components of population change (fertility, mortality, net international migrations)



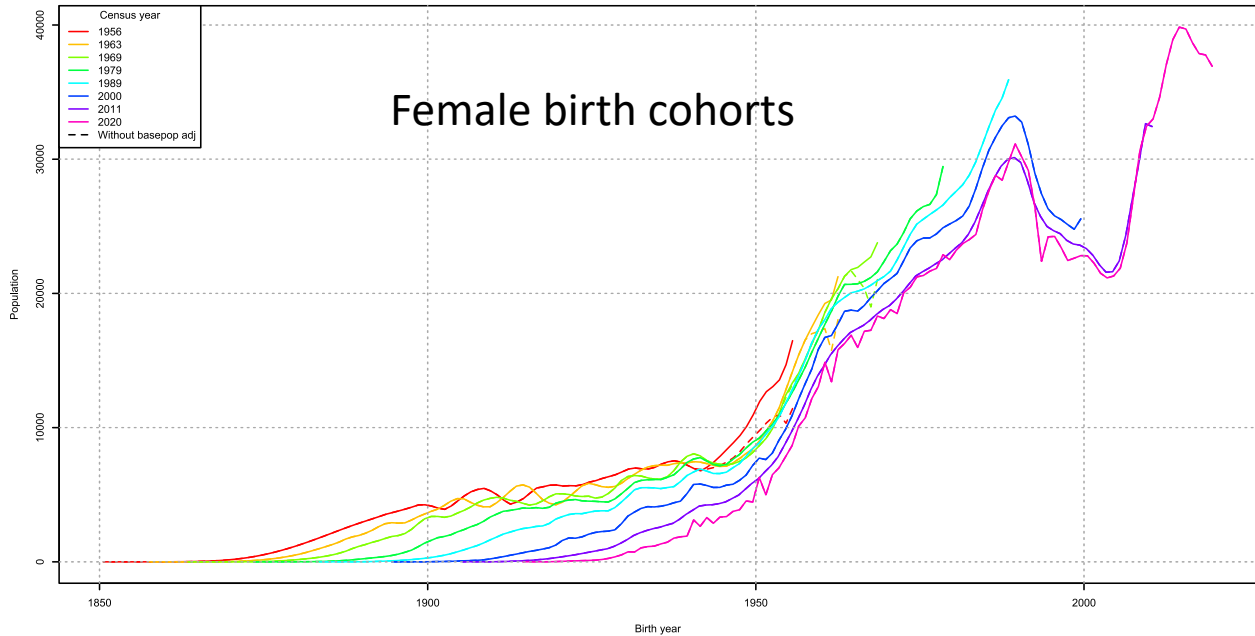
Mexico 2020 census age structure

Mexico - Population by Age and Sex, 1x1 (cohort, % over total), 2020



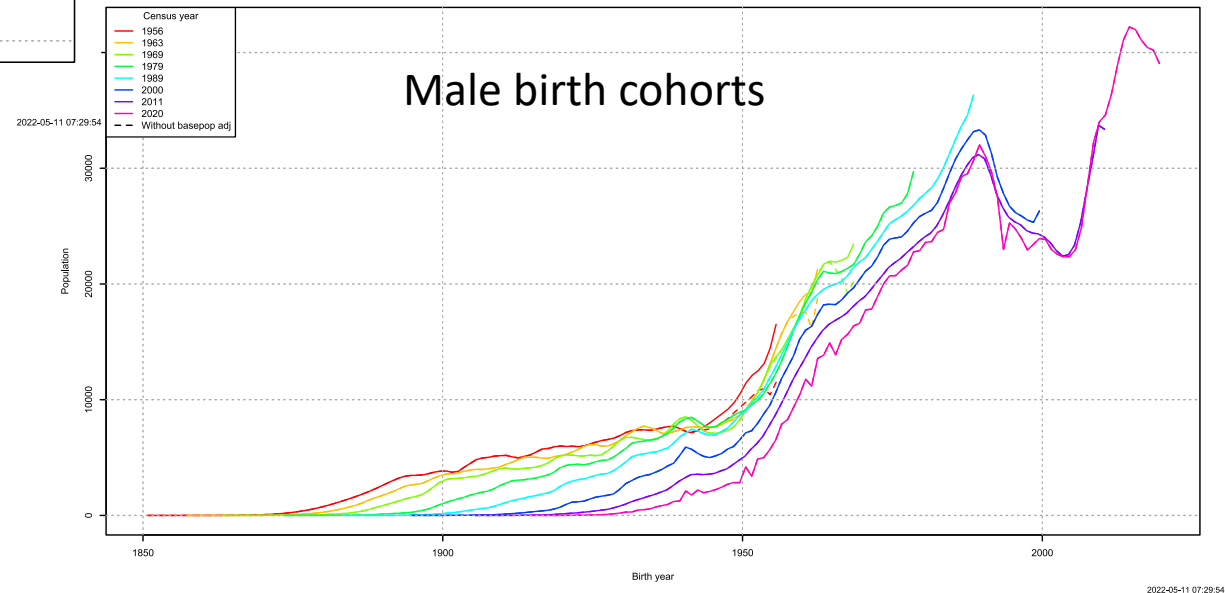
Mongolia 2020 census age structure by sex

Female birth cohorts



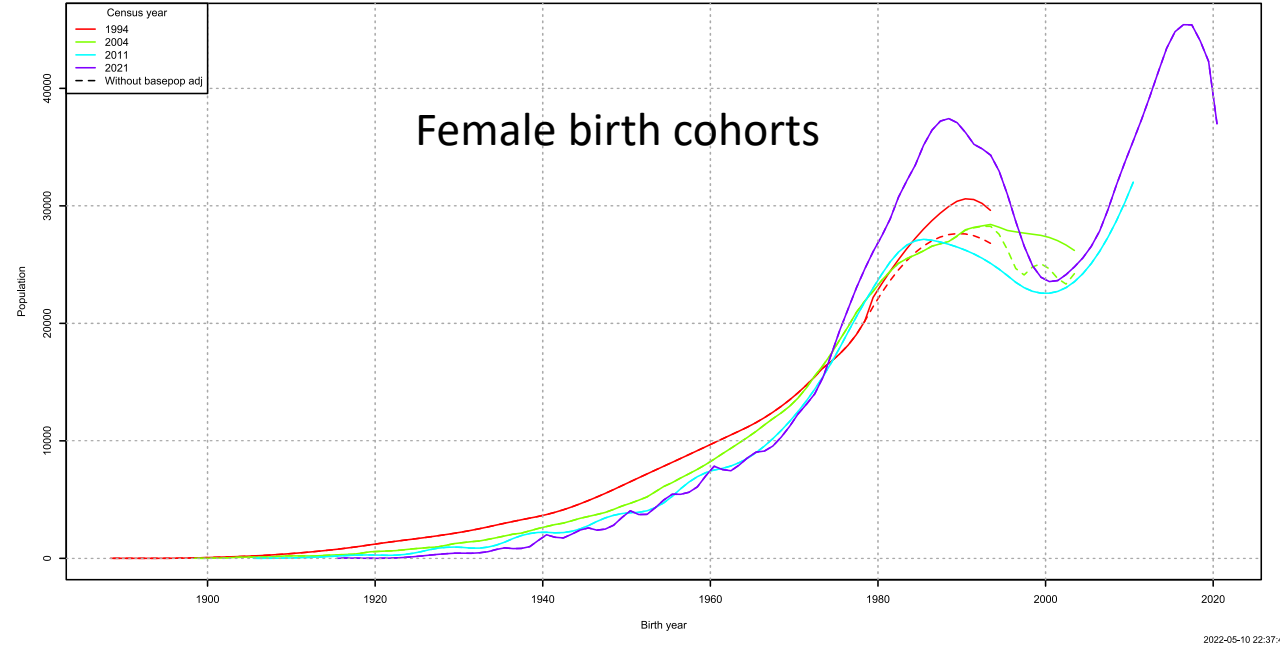
Consistent with previous censuses by birth cohorts, and intercensal demographic components of population change (fertility, mortality, net international migrations)

Male birth cohorts



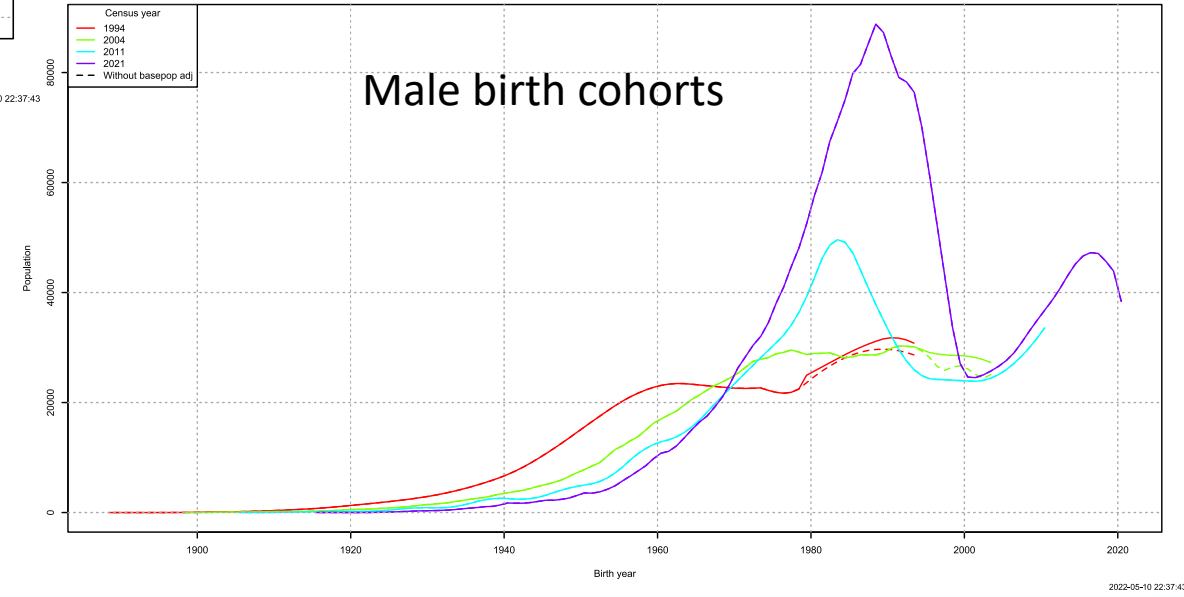
Oman 2020 census age structure by sex

Female birth cohorts

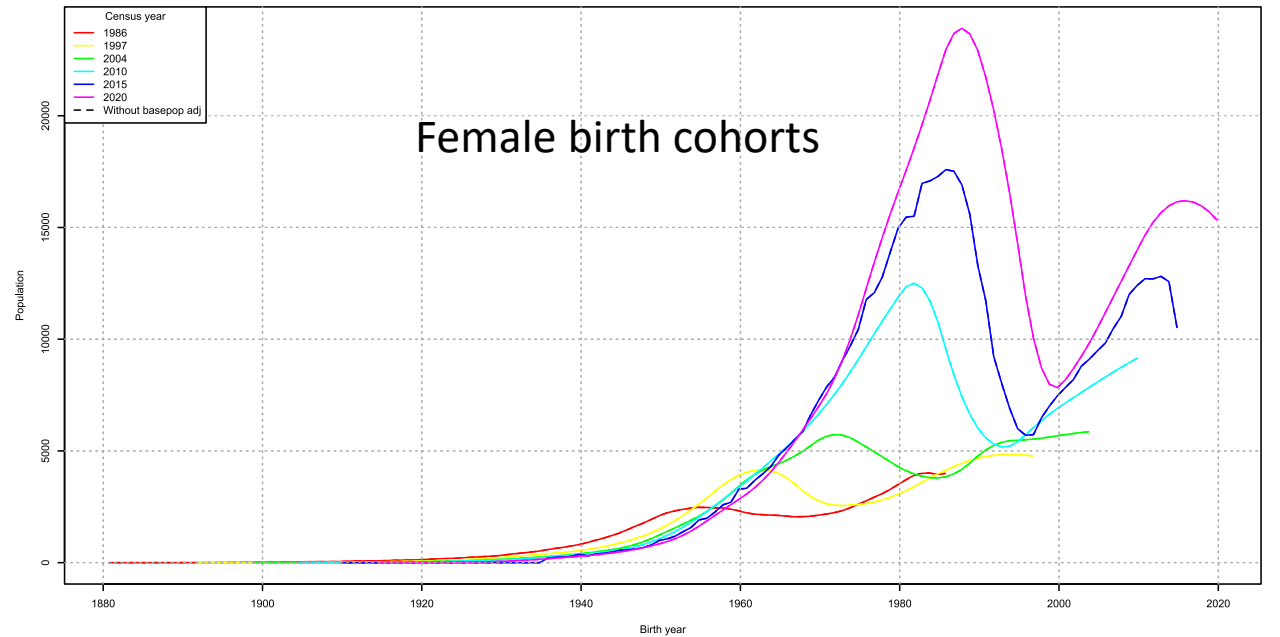


Consistent with previous censuses by birth cohorts, and intercensal demographic components of population change (fertility, mortality, net international migrations)

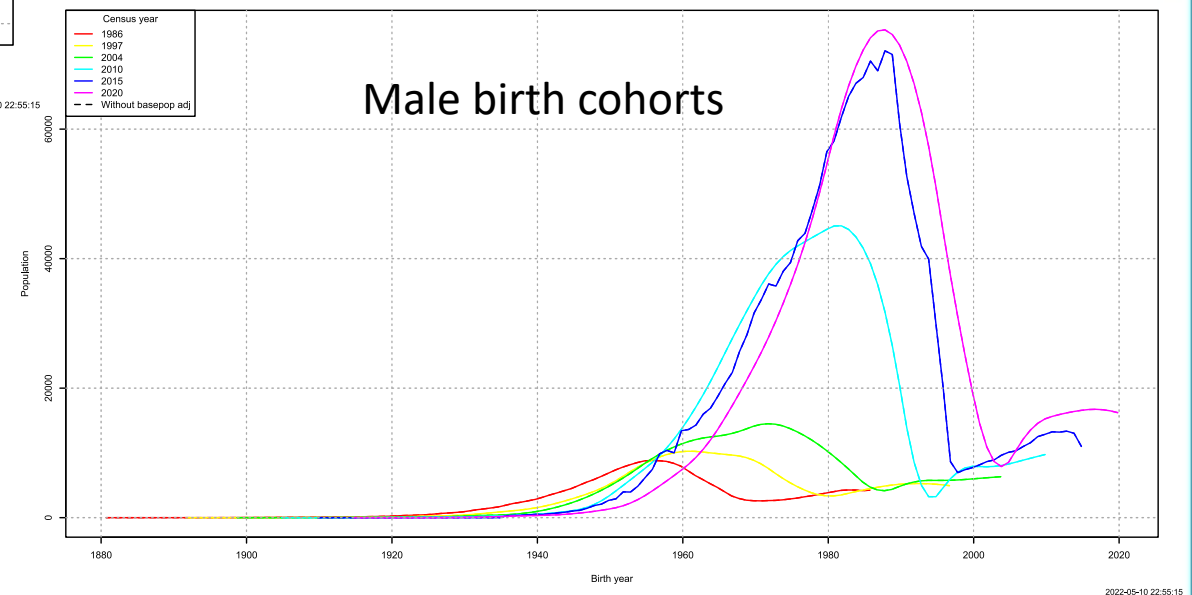
Male birth cohorts



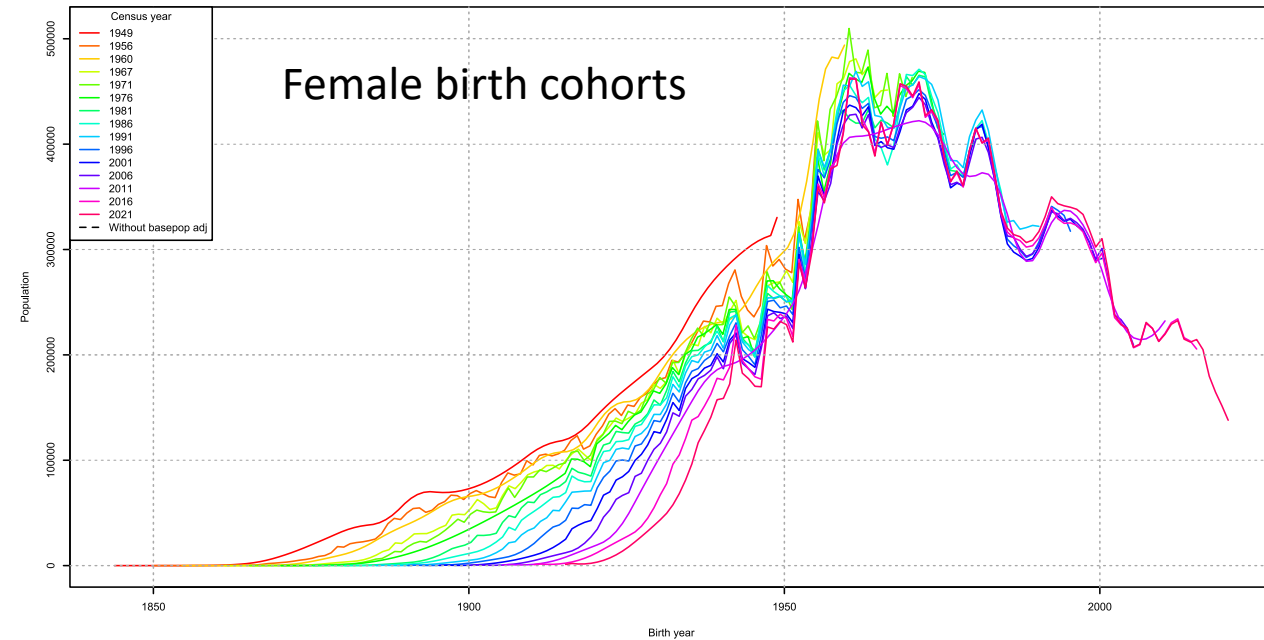
Qatar 2020 census age structure by sex



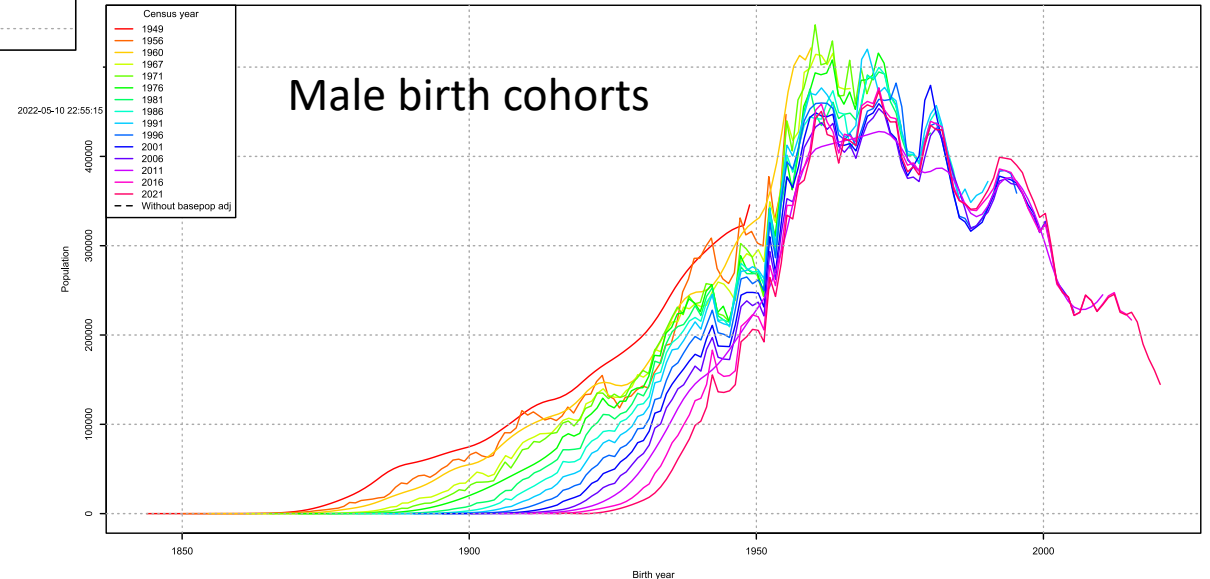
Consistent with previous censuses by birth cohorts, and intercensal demographic components of population change (fertility, mortality, net international migrations)



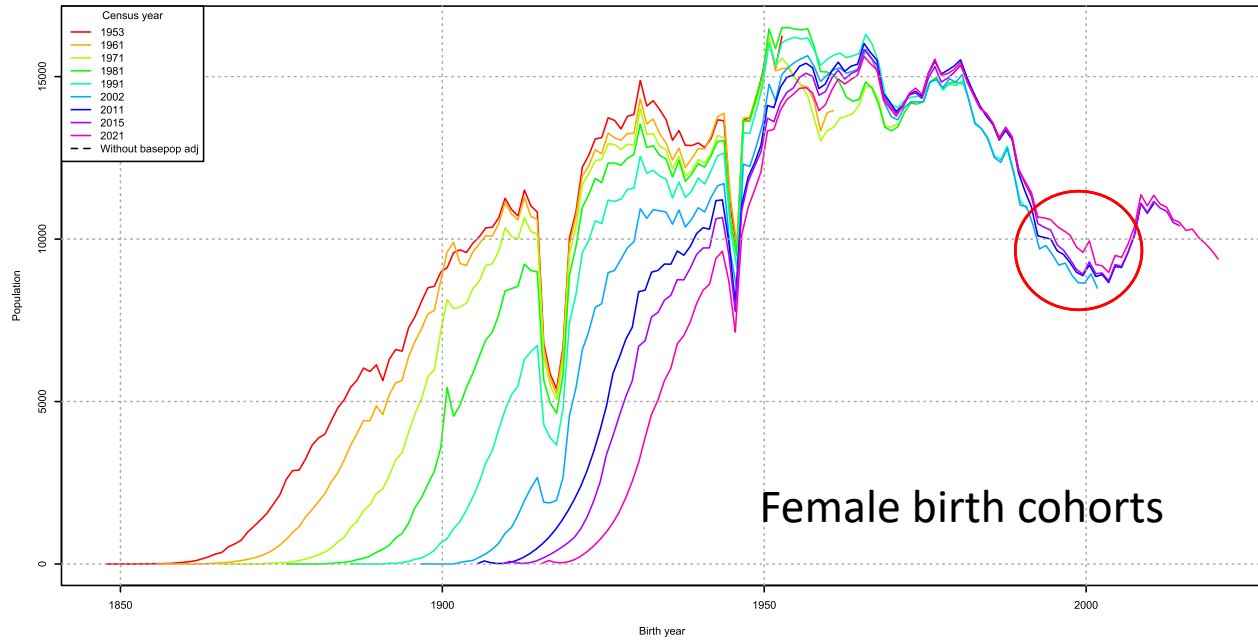
Rep. of Korea 2020 census age structure by sex



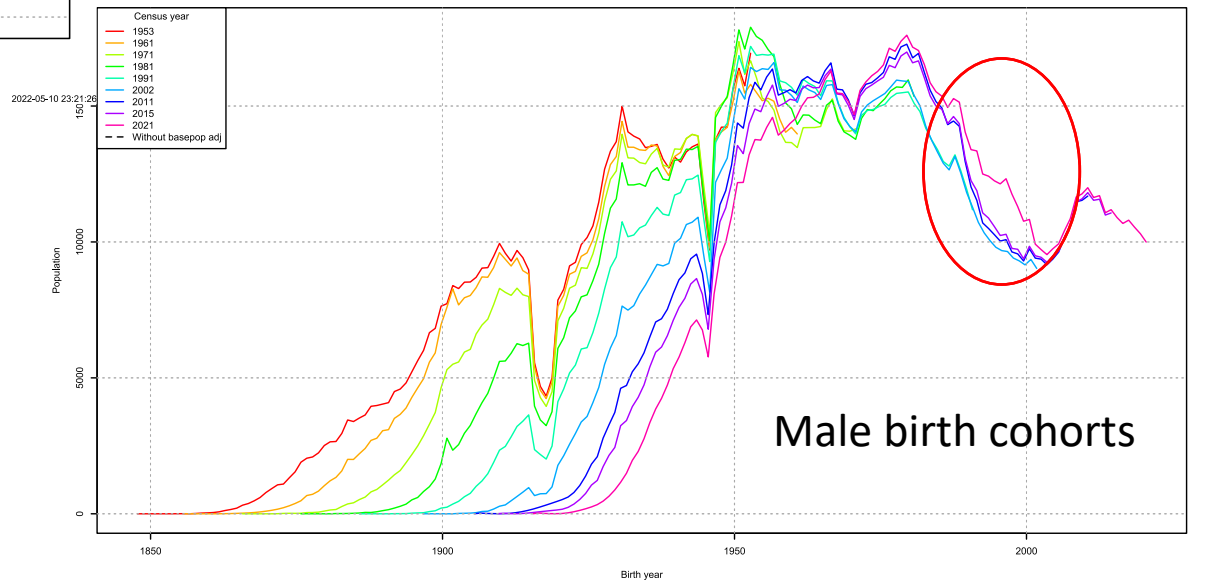
Consistent with previous censuses by birth cohorts, and intercensal demographic components of population change (fertility, mortality, net international migrations)



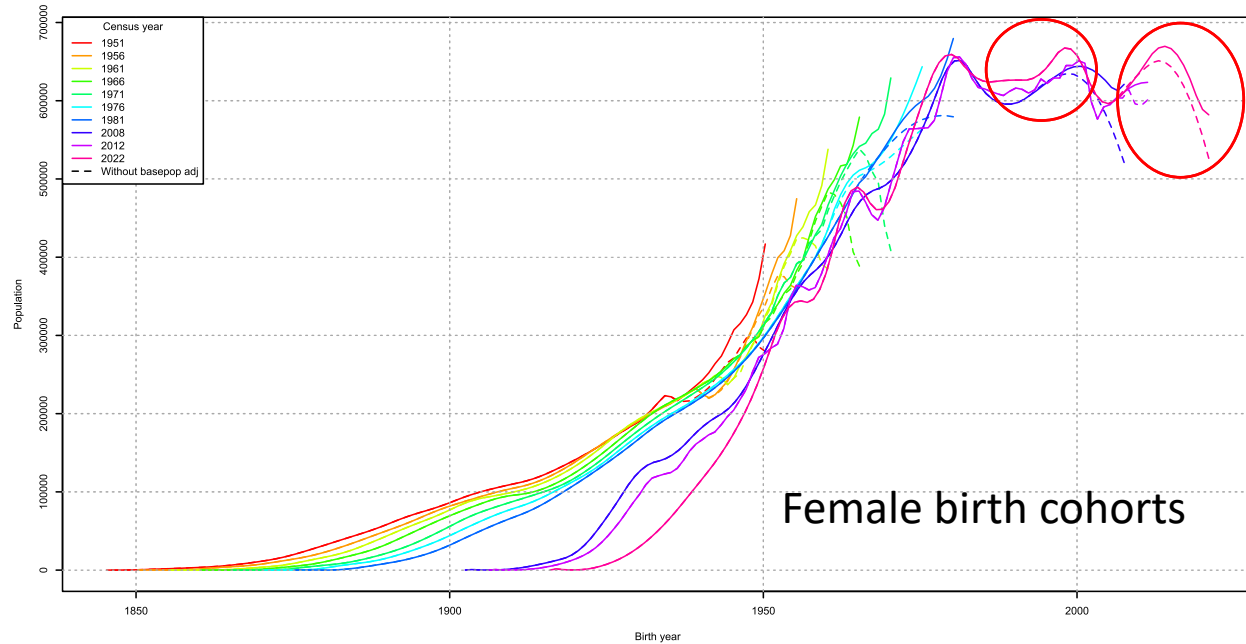
Slovenia 2021 census age structure by sex



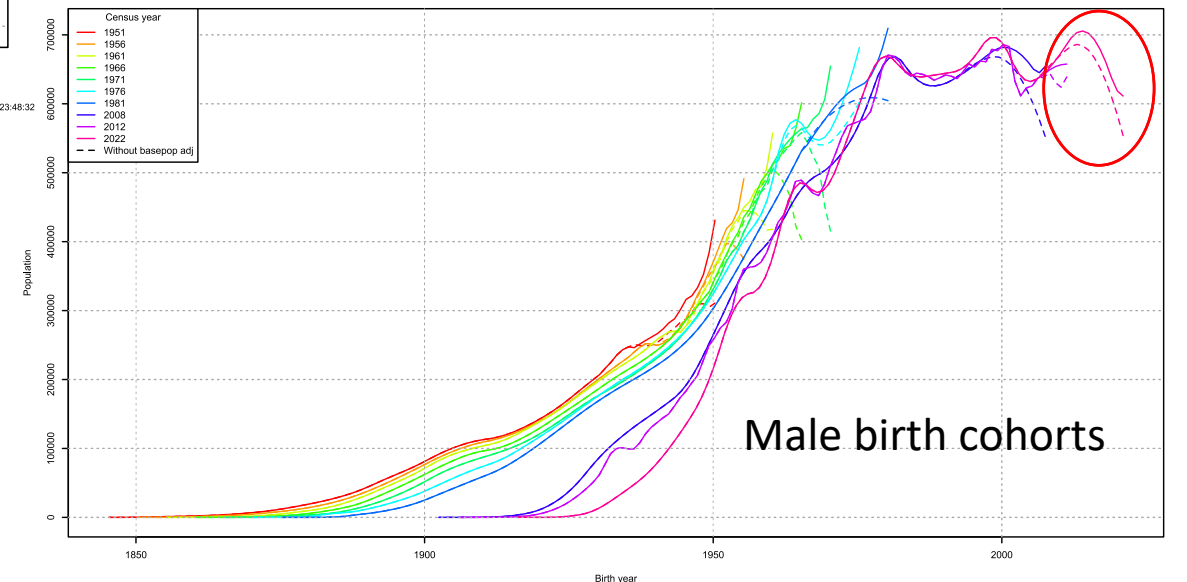
Overall consistent with previous censuses by birth cohorts, and intercensal demographic components of population change (fertility, mortality, net international migrations)
But more young adults (20-34), especially male, than expected



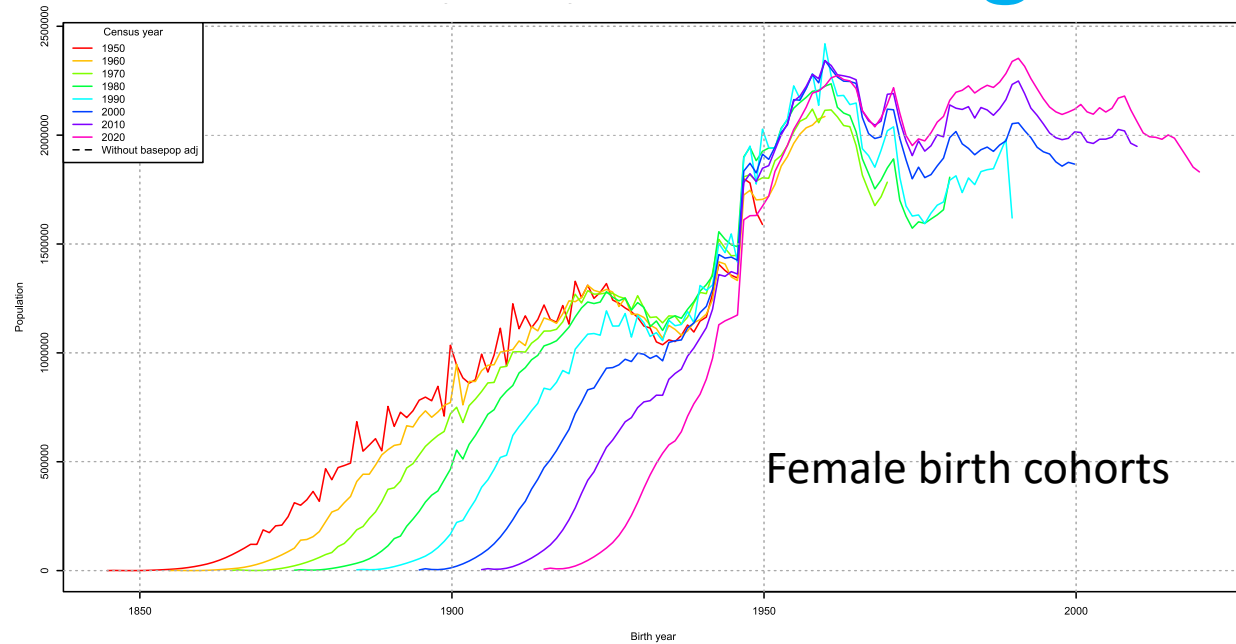
Turkiye 2021 census age structure by sex



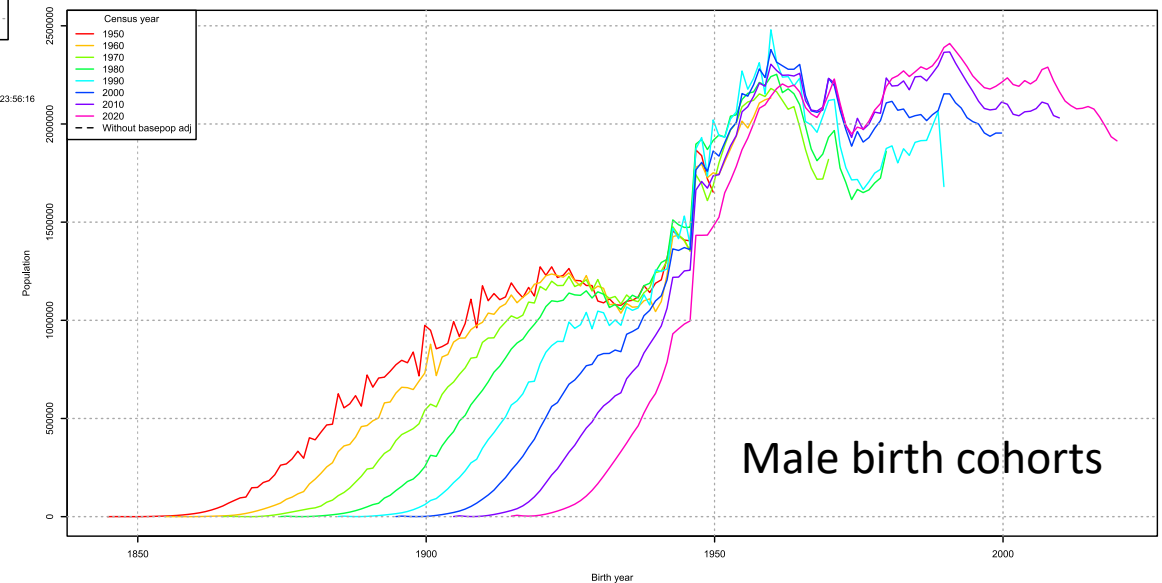
Overall consistent with previous censuses by birth cohorts,
But **under-enumeration of young children and more young adults (25-34) than expected** based on intercensal demographic components of population change (fertility, mortality, net international migrations)



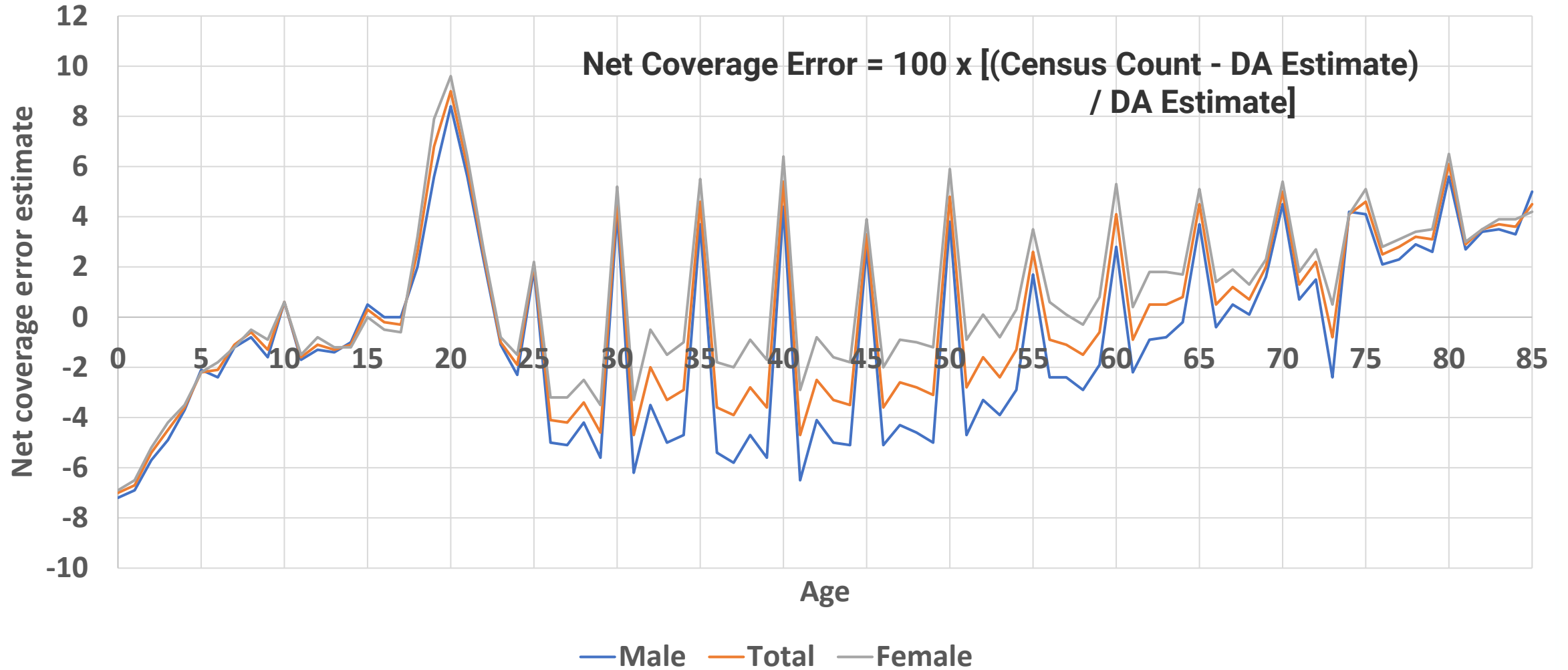
USA 2020 census age structure by sex



Overall consistent with previous censuses by birth cohorts, and intercensal demographic components of population change (fertility, mortality, net international migrations)



USA 2020 census: Demographic Analysis Net Coverage Error Estimates by Single Year of Age, Sex, and Middle Series: April 1, 2020



Summary

- In general, for the small subset of population censuses conducted in 2020 or 2021 for which tabulated results were available as of early 2022, the quality of the age/sex distribution for the whole country/area overall looks consistent with previous censuses and intercensal demographic trends, except for few locations which require further evaluations.
- Hard to generalize these results to other locations that also conducted censuses in 2020 or 2021 until more detailed results, especially by age and sex, become available for further analysis by birth cohorts and with intercensal demographic analysis.