



Thailand

The 2020 Population and Housing Census

Nipapan Borompichaichatkul
Professional Statisticians

*United Nations Expert Group Meeting on the Impact of the Covid-19
Pandemic on Conducting Population and Housing Censuses
and on Census Data Quality Concerns
9-12 February 2021*



Content



Content 1

Overview
of Population and Housing
Census in Thailand

Content 2

Lesson
Learnt from the 2018
and 2019 PHC Pilot

Content 3

2020
Population and Housing
Census (planned)

Content 4

Register-based
Population Census: Pilot
Study



Thailand's first population census

was conducted in 1909 by the Ministry of Interior

Conducted every 10 years

Main census method : Traditional Census

Upcoming Population and Housing Census was in 2020 (planned)



Content 1

Overview of Population and Housing Census in Thailand

Main Census methodology : Traditional Census



Before 2010 Census

Completed Enumeration (Short Form 100%)

Sample Enumeration (Long Form 20%)

2010 Census

Completed Enumeration (100%)



Content 1



Overview of Population and Housing Census in Thailand



Population Coverage

Content 1 Overview of Population and Housing Census in Thailand



All Thai nationals
residing in the country as of the census
date,

Persons having their
usual residence in Thailand, but
as of the census date, are temporarily abroad.

Government officials, both civilian
and military
including Thai diplomatic personnel, and their
families stationed abroad.

Foreigners having their usual
residence in Thailand
of those who had resided in Thailand for at least
three months as of the census date.

Data Collection Methods 2010 PHC

Content 1 Overview of Population and Housing Census in Thailand



**Face-to-face
interview**
(paper)

Self-interviewing
(by postal mail)
and online)

**Telephone
Interview**



Content 2



Content 2.1

Lesson Learnt from the 2018 PHC Pilot

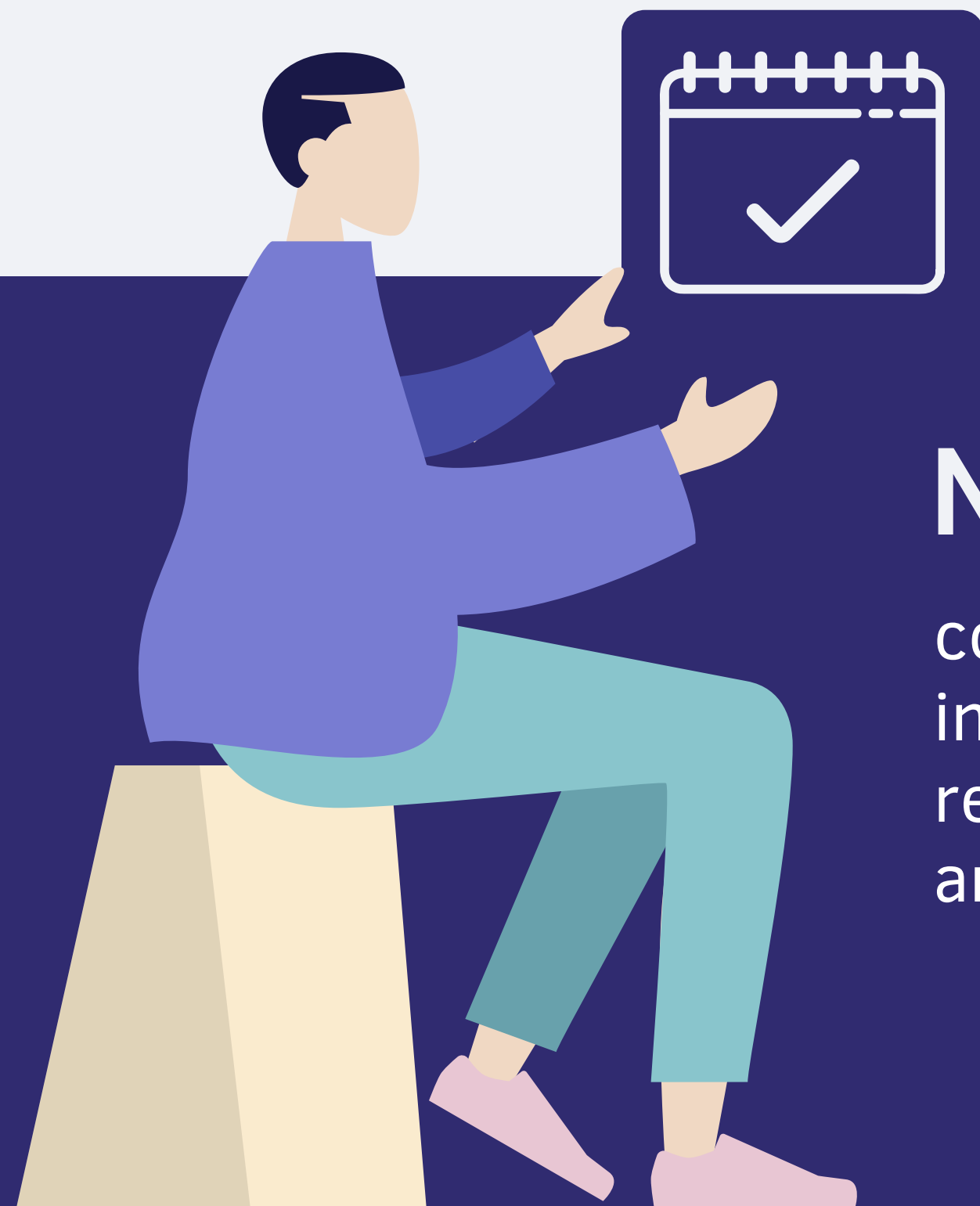
Content 2.2

Lesson Learnt from the 2019 PHC Pilot



Content 2.1

Lesson Learnt from the 2018 PHC Pilot



NSO Thailand

conducted pilot Population and Housing Census in 2018 aiming to study the differences Between registration data and census data, and the efficiency of data collection methods.



The Target areas

Content 2.1 Lesson Learnt from the 2018
PHC Pilot



**Bangkok
municipality**



Chachoengsao



Patumtani



Suphanburi



Data Collection Methods

Content 2.1 Lesson Learnt from the 2018 PHC Pilot

Face-to-face interview

(by Enumerator Using Tablet)

With
registration data

Without
registration data

Self-interviewing

(by postal mail and Online)



Content 2.1

Lesson Learnt from the 2018 PHC Pilot

Tablet & register data

1. Can't find house number
2. Take longer time to finish the interviewing
3. 30% different of register data and census data

Tablet without register data

1. Take less time to finish the interviewing
2. Less cooperation from the municipality than the non-municipality

Self-interviewing

1. High cost of mailing.
 2. Low respond rate
- Internet 5 % / Mailing 4%



Content 2.1 Lesson Learnt from the 2018 PHC Pilot

According to the 2018 PHC Pilot project, NSO should consider the following points;



1. The efficiency of using register data in 2020 PHC

since there is 30% differences of the actual households and the households in the register data.

3. Public Relations is the key to increase the awareness and boost online response.

2. Cost and benefit of using self-interviewing methods – online response, mailing

since the cost of postal and developing applications is quite high and the response rate are relatively low.

Content 2.2

Lesson Learnt from the 2019 PHC Pilot



The 2019 pilot study on data collection in high-rise building.

Content 2.2 Lesson Learnt from the 2019 PHC Pilot

The 2019 pilot study on data collection in high-rise building

1. By NSO THAILAND in Chonburi.

To find out best practices on data collection in high-rise building, and also promote internet response

2. Collaboration with Institute of Public Policy and Development (ippd) in Bangkok

To find out the efficiency of using online questionnaire, develop digital frame



Content 2.2

Lesson Learnt from the 2019 PHC Pilot

NSO Thailand Chonburi



1. Send out questionnaire with URL and QR code.
2. Internet respond rate 5%
Mailing rate 4%

IPPD Bangkok

1. Online response only
2. Respond rate 7.6%
3. 92% of respondent gives phone number and email.

Content 3

2020 Population and Housing Census (planned)

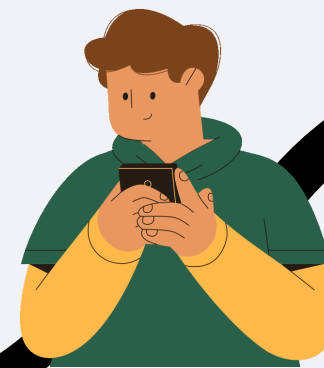
2018
PHC Pilot



2019
PHC Pilot



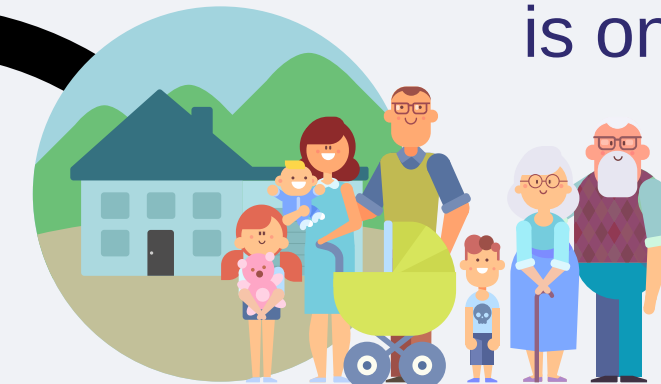
Questionnaire will be given to
high-rise building and village
residences in June.



2020 PHC Planed

The online response
from June – July 2020.

PHC date
is on July 1st, 2020



Feb2020



COVID-19

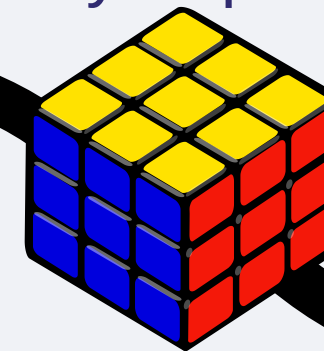
Mar2020



The meeting of committee on project
management of 2020 PHC

Apr2020

discussion
to carry or postpone



Aug2020

Register based
Census Pilot
study



The impact of covid-19

COVID-19



The impact of COVID-19

The pandemic will have

several impacts, According to the data quality of 2020 Population and Housing census collecting between the coronavirus epidemic.

Implementing social distancing

measure, the Thai NSO cannot conduct the traditional census in communities at the risk of transmission.

The demographer recommend

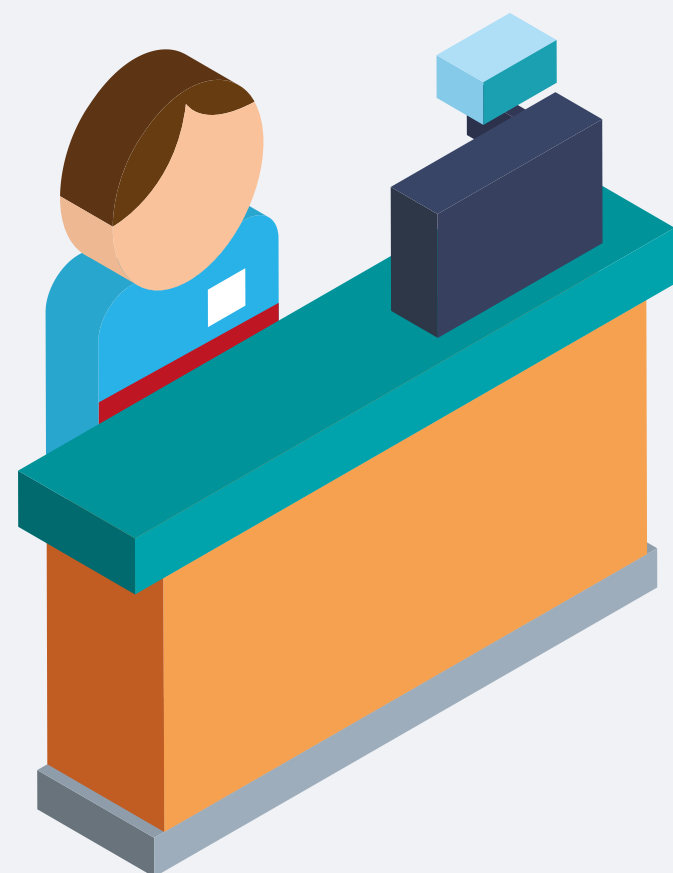
that the demographic data is not appropriate to use, such as migration, unemployment especially, actual resident of population.

Thailand's 2020 population

and Housing census postponed due to the coronavirus outbreak.

The impact of COVID-19

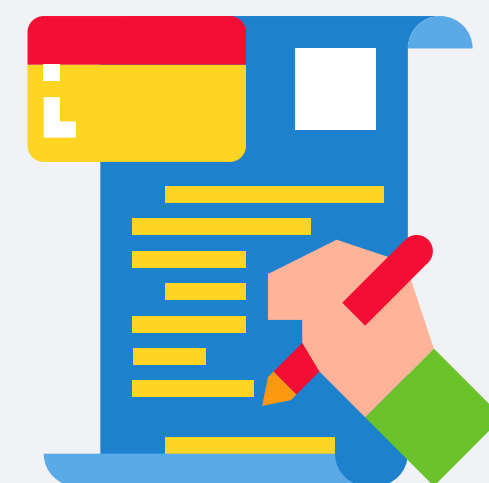
Currently, Thai NSO



will partially mobilize our financial resources and manpower to the development of the register-base census system in Thailand.

We will continue to work with the relevant

authorities to ensure that the census will be resumed at the earliest opportunity.



Content 4

Register-based Population Census : Pilot Study



Pilot study areas: 3 Provinces

**Chachoengsao
province**

**Chonburi
province**

**Rayong
province**



DATA

Register-based Population
Census: Pilot Study



Data from various registration
databases such as

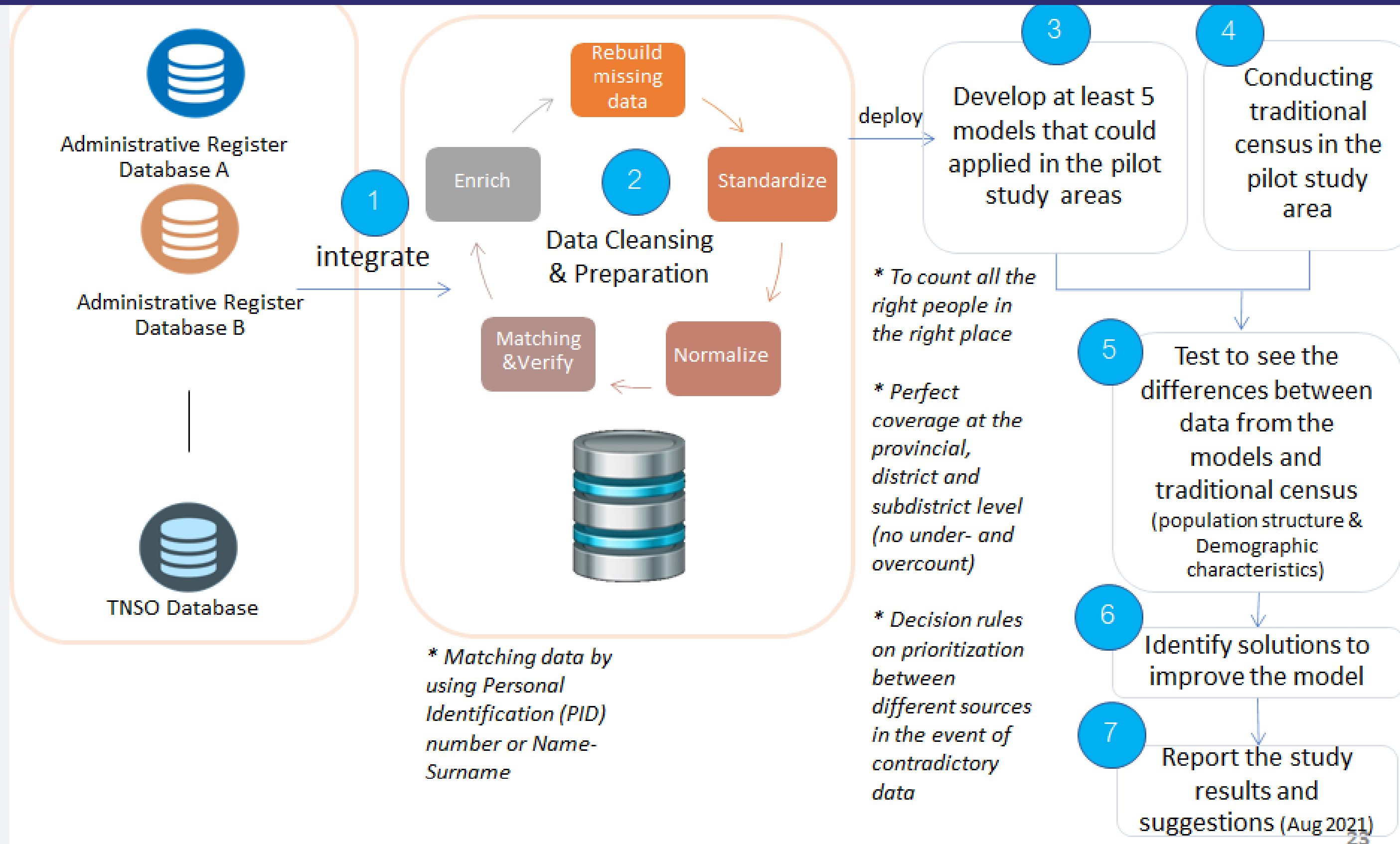
- “Basic Minimum Needs” database from Community Development Department, Ministry of the Interior
- “Farmer-One” database from Ministry of Agriculture and Cooperatives etc.



Data from Census/survey of TNSO
such as

- Agricultural Census
- Labor Force survey etc.

Register-based Population Census: Conceptual framework





Thank you

+66 21421255

nipapan.p@nso.go.th

www.nso.go.th

