

Global Forum on Gender Statistics

Making Data Open, Interoperable, and credible to improve gender equality

NOVEMBER 14, 2018

MASAKO HIRAGA
WORLD BANK



World Bank Data @worldbankdata · Oct 19

Despite penalties existing in 🇰🇮🇲 #Kiribati, the 🇸🇻🇰 #SolomonIslands, and 🇻🇺 #Vanuatu, around 40 percent of women in these countries report violence from an intimate partner. Learn more: wrlb.bg/hvGL30kdbak #SDGAtlas #SDG5

Laws may help protect women from violence, but two out of five countries have no clear penalties for domestic violence.

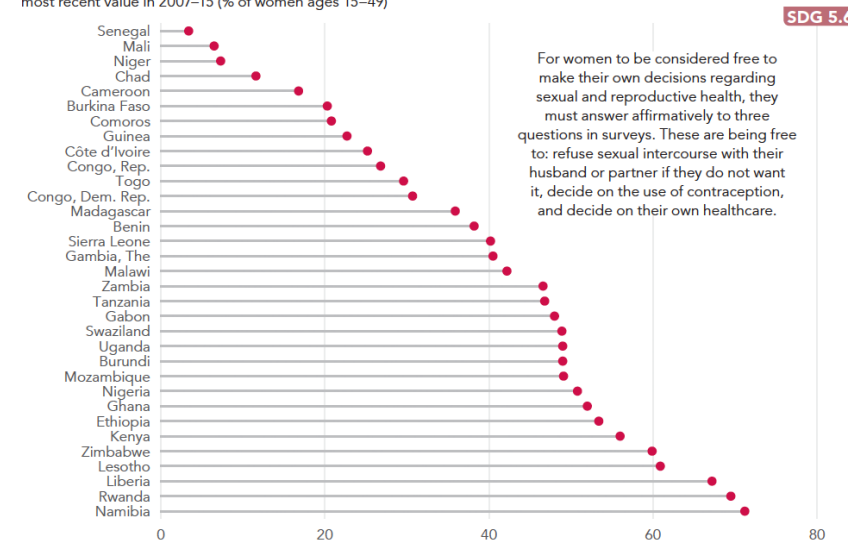
Are there clear criminal penalties for domestic violence? 2017



Source: World Bank Women, Business and the Law 2018; World Development Indicators (SG.VAW.1549.ZS)

Many women in Sub-Saharan Africa are not free to make their own decisions about reproductive health and sexual relations.

Women making their own informed decisions regarding sexual relations, contraceptive use, and reproductive healthcare, most recent value in 2007–15 (% of women ages 15–49)



Note: Countries in Sub-Saharan Africa with available data shown.

Source: Household surveys (DHS) compiled by United Nations Population Fund. WDI (SG.DMK.SRCR.FN.ZS).

Find an Indicator

[Go!](#)[Available Indicators](#)

Explore Dashboards



Create Query

[DATABANK](#)

About the Data Portal

The Gender Data Portal is the World Bank Group's comprehensive source for the latest sex-disaggregated data and gender statistics covering demography, education, health, access to economic opportunities, public life and decision-making, and agency.

[Read More »](#)

Featured

[All Gender Indicators \(Excel - .zip, 11.4MB\) »](#)[Enterprise Surveys »](#)[Global Findex »](#)[LSMS-ISA »](#)[Women, Business and the Law »](#)

Get Tools

Explore tools for data visualization and gender analysis



Survey Catalog

Select surveys by topics relevant to gender analysis



Filling Data Gaps

Learn about data availability and current efforts to fill gender data gaps



Guidelines & Training

Access international guidelines and training materials

DataBank | Gender Statistics ?

Variables Layout Styles Save Share Embed

Database Available 134 | Selected 1

Database preview ON OFF ?

- Enter Keywords for Q
- ☐ World Development Indicators
 - ☐ Education Statistics - All Indicators
 - ☐ Poverty and Equity
 - ☐ IDA Results Measurement System
 - ☐ Quarterly Public Sector Debt
 - ☐ Jobs
 - ☐ Statistical Capacity Indicators
 - ☒ Gender Statistics
 - ☐ Health Nutrition and Population Statistics
 - ☐ Doing Business
 - ☐ Millennium Development Goals
 - ☐ Joint External Debt Hub
 - ☐ Global Economic

Country Available 263 | Selected

Series Available 534 | Selected

Time Available 58 | Selected 0

Preview

Clear Selection | Add Country (0) Add Series (0) Add Time (0)

HOME NEWS HLG-PCCB IAEG-SDGS EVENTS SDG INDICATORS REPORTS

SDG Indicators

Global Database

Last updated: 30 November 2017 [View update history](#)

Explore the data: By country or area By SDG indicator

World

Explore the metadata: Metadata repository

Go Clear Back

Indicator : 1.1.1 - Proportion of population below the international poverty line, by sex, age, employment status and geographical location (urban/rural)

CSV Excel

Series Type	Series Description	Country or Area Code	Country or Area Name	LDC	LLDC	SIDS	Frequency	Source type
SD	Proportion of population below the international poverty line of US\$1.90 per day	MDG_WORLD	World				Annual	Not available
SD	Proportion of population below the international poverty line of US\$1.90 per day	SDG_NAEUR	Europe and Northern America				Annual	Not available
SD	Proportion of population below the international poverty line of US\$1.90 per day	BLR	Belarus				Annual	Not available
SD	Proportion of population below the international poverty line of US\$1.90 per day	BGR	Bulgaria				Annual	Not available
SD	Proportion of population below the international poverty line of US\$1.90 per day	CZE	Czechia				Annual	Not available

Home About the IMF Research Countries Capacity Development News Videos Data Publications

World Economic Outlook Database, October 2017

Step 4 of 5 1 2 3 4 5 New Query

[Your selections](#) [Help](#)

4. Select Date Range

Prepare Report >

Date Range

Start Year 2015 End Year 2022

Advanced Settings (Optional)

Notes

...for Subject

☒ Subject Descriptor

☐ WEO Subject Code

by Subject then Country

Remove rows with no data

Prepare Report >

Download one indicator at a time

Have to know indicator name

Have to know which database to choose from

Many steps query tool

Make Data Convenient

Make Data Open

Make Data Convenient: Making Data Open



World Bank Open Data

Free and open access to global development data

Search data e.g. GDP, population, Indonesia

Browse by [Country](#) or [Indicator](#)

MOST RECENT

Global Index 2017 microdata available for download
Nov 01, 2018

Good, the Bad, and the Ugly: Data on the food system
J. Lampietti, Oct 31, 2018

Checklist: 10 guiding principles for effective use of risk data
Simone Balog-Way, Oct 29, 2018

From Discovery to Scale: Leveraging big data to improve development outcomes

WHAT YOU CAN LEARN WITH OPEN DATA

Poverty headcount ratio at \$1.90 a day (2011 PPP) (% of population)

Data from [World Bank](#)

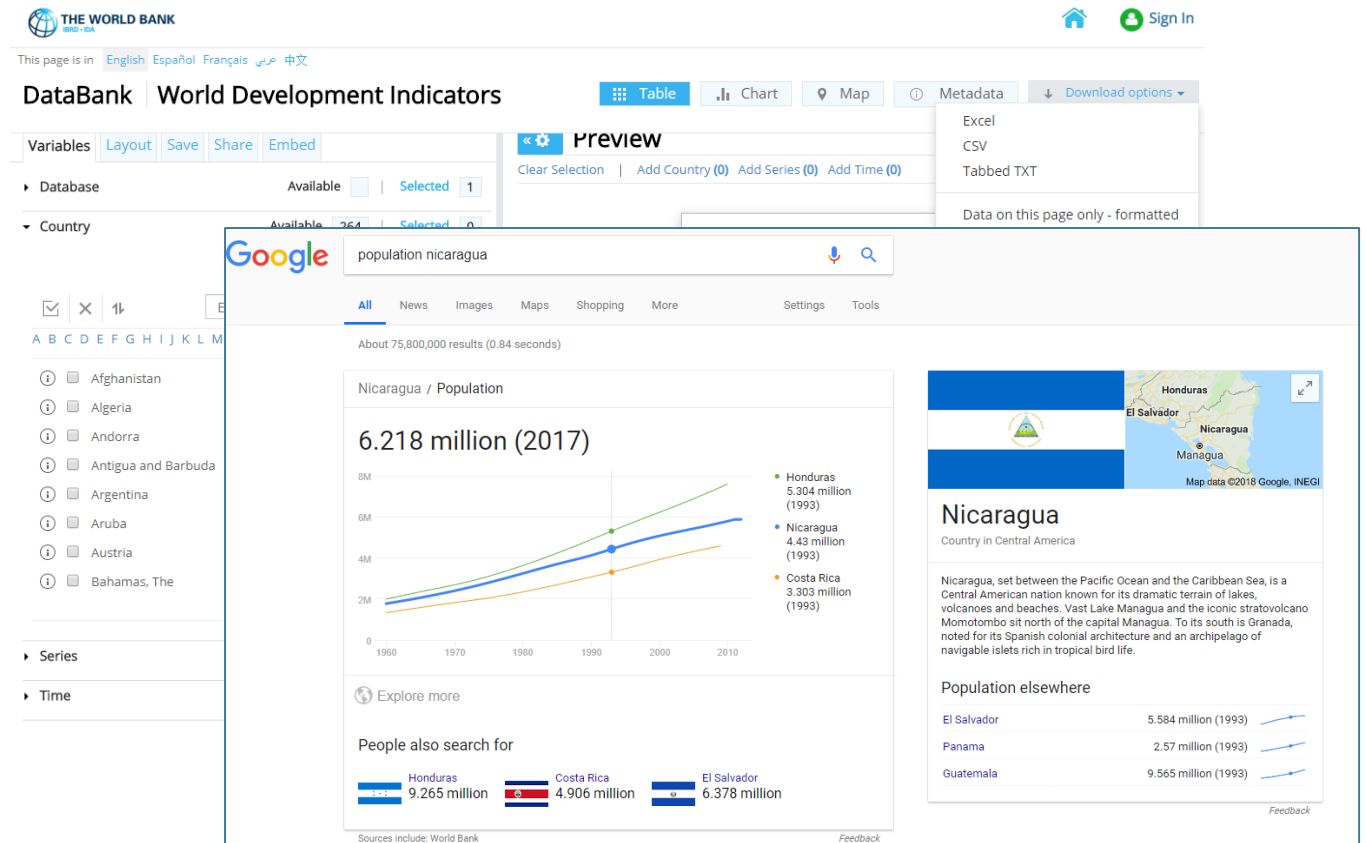
Atlas of Sustainable Development Goals 2018 From World Development Indicators

SDG Atlas 2018

Extreme Poverty
The proportion of the world's population living in extreme poverty has dropped significantly

Open data doesn't have to be complex

- ✓ Not only query tools – make data easily searchable
- ✓ Bulk downloads of CSV/XLS files + APIs
- ✓ Terms of use



Make Data Convenient:

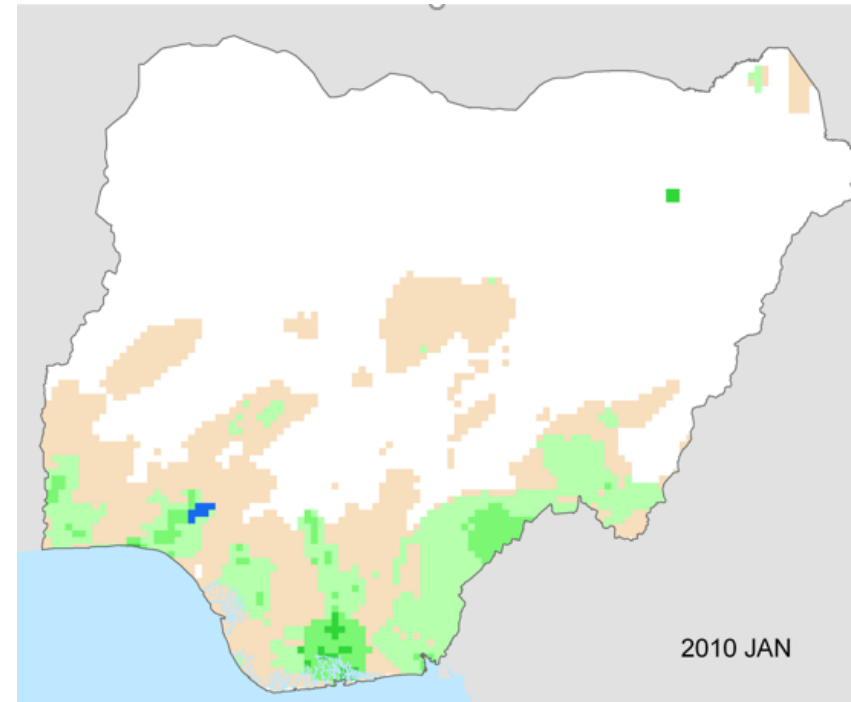
Making Data Interoperable

Technical Interoperability

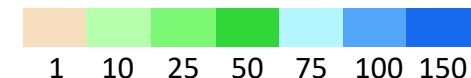
- ❑ Data formats (downloadable, machine-readable)
- ❑ Different types of data (ex. Geo-special data)
- ❑ Open source tools

Conceptual Interoperability

- ❑ Extensible, open-ended, modifiable standards
- ❑ Future-proofing our data ecosystem



Rainfall (mm)



Make Data Credible

Make Data Credible: Relevance, Transparency, Reproducibility

Atlas of Sustainable Development Goals
2018 From World Development Indicators

Laws may help protect women from violence, but two out of five countries have no clear penalties for domestic violence.

Are there clear criminal penalties for domestic violence? 2017

SDG 5.2

Yes
No
No data

Showing Metadata for: Series

Code	SH.STA.MMRT.NE
License Type	CC BY-4.0
Indicator Name	Maternal mortality ratio (national estimate per 100,000 live births)
Long definition	Maternal mortality ratio is the number of women who die from pregnancy-related causes while pregnant or within 42 days of pregnancy termination per 100,000 live births.
Source	UNICEF, State of the World's Children, and Demographic and Health Surveys
Topic	Health: Reproductive health
Periodicity	Annual
Statistical concept and methodology	Reproductive health is a state of physical, mental and social well-being in relation to the reproductive system and its functions. Means of achieving reproductive health include education and services for pregnancy and childbirth, safe and effective contraception, and prevention and treatment of sexually transmitted diseases. Complications of pregnancy and childbirth are the leading causes of death and disability among women of reproductive age in developing countries. Maternal mortality ratios are generally unknown or unreliable, as are many other specific mortality indicators. Household

In Afghanistan, where there are no penalties, 45 percent of women report violence from intimate partners.

Source: World Bank Women, Business and the Law 2018. World Development Indicators (SDG 5.2)

```
8 library(wbgcharts)
9 library(wbgmaps)
10 library(wbggeo)
11 library(gtable)
12 source("styles.R")
13
14 fig_sd5_law_gender_hiring <- function(year = 2017) {
15   indicator <- "SG.LAW.NODC.HR"
16
17   df <- wbgdata(
18     wbgref$countries$iso3c,
19     indicator,
20     years = year,
21     # Comment the next two lines to use live API data
22     offline = "only",
23     offline.file = "inputs/ cached_api_data/fig_sd5_law_gender_hiring.csv"
24   )
25
26   df <- df %>%
27     select(iso3c, "SG.LAW.NODC.HR") %>%
28     right_join(wbgref$countries$regions)
29
30   figure(
31     data = df,
32     title = "Are there clear criminal penalties for domestic violence? 2017",
33     subtitle = "SDG 5.2",
34     xlab = "Region",
35     ylab = "Maternal mortality ratio (national estimate per 100,000 live births)",
36     theme = "dark",
37     font_size = 12,
38     font_weight = "bold",
39     font_color = "white",
40     background_color = "black",
41     border_color = "white",
42     border_size = 1,
43     border_style = "solid",
44     border_radius = 10,
45     border_dash = NULL,
46     border_weight = 1,
47     border_color2 = "white",
48     border_size2 = 1,
49     border_style2 = "solid",
50     border_radius2 = 10,
51     border_dash2 = NULL,
52     border_weight2 = 1,
53     border_color3 = "white",
54     border_size3 = 1,
55     border_style3 = "solid",
56     border_radius3 = 10,
57     border_dash3 = NULL,
58     border_weight3 = 1,
59     border_color4 = "white",
60     border_size4 = 1,
61     border_style4 = "solid",
62     border_radius4 = 10,
63     border_dash4 = NULL,
64     border_weight4 = 1,
65     border_color5 = "white",
66     border_size5 = 1,
67     border_style5 = "solid",
68     border_radius5 = 10,
69     border_dash5 = NULL,
70     border_weight5 = 1,
71     border_color6 = "white",
72     border_size6 = 1,
73     border_style6 = "solid",
74     border_radius6 = 10,
75     border_dash6 = NULL,
76     border_weight6 = 1,
77     border_color7 = "white",
78     border_size7 = 1,
79     border_style7 = "solid",
80     border_radius7 = 10,
81     border_dash7 = NULL,
82     border_weight7 = 1,
83     border_color8 = "white",
84     border_size8 = 1,
85     border_style8 = "solid",
86     border_radius8 = 10,
87     border_dash8 = NULL,
88     border_weight8 = 1,
89     border_color9 = "white",
90     border_size9 = 1,
91     border_style9 = "solid",
92     border_radius9 = 10,
93     border_dash9 = NULL,
94     border_weight9 = 1,
95     border_color10 = "white",
96     border_size10 = 1,
97     border_style10 = "solid",
98     border_radius10 = 10,
99     border_dash10 = NULL,
100    border_weight10 = 1,
101    border_color11 = "white",
102    border_size11 = 1,
103    border_style11 = "solid",
104    border_radius11 = 10,
105    border_dash11 = NULL,
106    border_weight11 = 1,
107    border_color12 = "white",
108    border_size12 = 1,
109    border_style12 = "solid",
110    border_radius12 = 10,
111    border_dash12 = NULL,
112    border_weight12 = 1,
113    border_color13 = "white",
114    border_size13 = 1,
115    border_style13 = "solid",
116    border_radius13 = 10,
117    border_dash13 = NULL,
118    border_weight13 = 1,
119    border_color14 = "white",
120    border_size14 = 1,
121    border_style14 = "solid",
122    border_radius14 = 10,
123    border_dash14 = NULL,
124    border_weight14 = 1,
125    border_color15 = "white",
126    border_size15 = 1,
127    border_style15 = "solid",
128    border_radius15 = 10,
129    border_dash15 = NULL,
130    border_weight15 = 1,
131    border_color16 = "white",
132    border_size16 = 1,
133    border_style16 = "solid",
134    border_radius16 = 10,
135    border_dash16 = NULL,
136    border_weight16 = 1,
137    border_color17 = "white",
138    border_size17 = 1,
139    border_style17 = "solid",
140    border_radius17 = 10,
141    border_dash17 = NULL,
142    border_weight17 = 1,
143    border_color18 = "white",
144    border_size18 = 1,
145    border_style18 = "solid",
146    border_radius18 = 10,
147    border_dash18 = NULL,
148    border_weight18 = 1,
149    border_color19 = "white",
150    border_size19 = 1,
151    border_style19 = "solid",
152    border_radius19 = 10,
153    border_dash19 = NULL,
154    border_weight19 = 1,
155    border_color20 = "white",
156    border_size20 = 1,
157    border_style20 = "solid",
158    border_radius20 = 10,
159    border_dash20 = NULL,
160    border_weight20 = 1,
161    border_color21 = "white",
162    border_size21 = 1,
163    border_style21 = "solid",
164    border_radius21 = 10,
165    border_dash21 = NULL,
166    border_weight21 = 1,
167    border_color22 = "white",
168    border_size22 = 1,
169    border_style22 = "solid",
170    border_radius22 = 10,
171    border_dash22 = NULL,
172    border_weight22 = 1,
173    border_color23 = "white",
174    border_size23 = 1,
175    border_style23 = "solid",
176    border_radius23 = 10,
177    border_dash23 = NULL,
178    border_weight23 = 1,
179    border_color24 = "white",
180    border_size24 = 1,
181    border_style24 = "solid",
182    border_radius24 = 10,
183    border_dash24 = NULL,
184    border_weight24 = 1,
185    border_color25 = "white",
186    border_size25 = 1,
187    border_style25 = "solid",
188    border_radius25 = 10,
189    border_dash25 = NULL,
190    border_weight25 = 1,
191    border_color26 = "white",
192    border_size26 = 1,
193    border_style26 = "solid",
194    border_radius26 = 10,
195    border_dash26 = NULL,
196    border_weight26 = 1,
197    border_color27 = "white",
198    border_size27 = 1,
199    border_style27 = "solid",
200    border_radius27 = 10,
201    border_dash27 = NULL,
202    border_weight27 = 1,
203    border_color28 = "white",
204    border_size28 = 1,
205    border_style28 = "solid",
206    border_radius28 = 10,
207    border_dash28 = NULL,
208    border_weight28 = 1,
209    border_color29 = "white",
210    border_size29 = 1,
211    border_style29 = "solid",
212    border_radius29 = 10,
213    border_dash29 = NULL,
214    border_weight29 = 1,
215    border_color30 = "white",
216    border_size30 = 1,
217    border_style30 = "solid",
218    border_radius30 = 10,
219    border_dash30 = NULL,
220    border_weight30 = 1,
221    border_color31 = "white",
222    border_size31 = 1,
223    border_style31 = "solid",
224    border_radius31 = 10,
225    border_dash31 = NULL,
226    border_weight31 = 1,
227    border_color32 = "white",
228    border_size32 = 1,
229    border_style32 = "solid",
230    border_radius32 = 10,
231    border_dash32 = NULL,
232    border_weight32 = 1,
233    border_color33 = "white",
234    border_size33 = 1,
235    border_style33 = "solid",
236    border_radius33 = 10,
237    border_dash33 = NULL,
238    border_weight33 = 1,
239    border_color34 = "white",
240    border_size34 = 1,
241    border_style34 = "solid",
242    border_radius34 = 10,
243    border_dash34 = NULL,
244    border_weight34 = 1,
245    border_color35 = "white",
246    border_size35 = 1,
247    border_style35 = "solid",
248    border_radius35 = 10,
249    border_dash35 = NULL,
250    border_weight35 = 1,
251    border_color36 = "white",
252    border_size36 = 1,
253    border_style36 = "solid",
254    border_radius36 = 10,
255    border_dash36 = NULL,
256    border_weight36 = 1,
257    border_color37 = "white",
258    border_size37 = 1,
259    border_style37 = "solid",
260    border_radius37 = 10,
261    border_dash37 = NULL,
262    border_weight37 = 1,
263    border_color38 = "white",
264    border_size38 = 1,
265    border_style38 = "solid",
266    border_radius38 = 10,
267    border_dash38 = NULL,
268    border_weight38 = 1,
269    border_color39 = "white",
270    border_size39 = 1,
271    border_style39 = "solid",
272    border_radius39 = 10,
273    border_dash39 = NULL,
274    border_weight39 = 1,
275    border_color40 = "white",
276    border_size40 = 1,
277    border_style40 = "solid",
278    border_radius40 = 10,
279    border_dash40 = NULL,
280    border_weight40 = 1,
281    border_color41 = "white",
282    border_size41 = 1,
283    border_style41 = "solid",
284    border_radius41 = 10,
285    border_dash41 = NULL,
286    border_weight41 = 1,
287    border_color42 = "white",
288    border_size42 = 1,
289    border_style42 = "solid",
290    border_radius42 = 10,
291    border_dash42 = NULL,
292    border_weight42 = 1,
293    border_color43 = "white",
294    border_size43 = 1,
295    border_style43 = "solid",
296    border_radius43 = 10,
297    border_dash43 = NULL,
298    border_weight43 = 1,
299    border_color44 = "white",
300    border_size44 = 1,
301    border_style44 = "solid",
302    border_radius44 = 10,
303    border_dash44 = NULL,
304    border_weight44 = 1,
305    border_color45 = "white",
306    border_size45 = 1,
307    border_style45 = "solid",
308    border_radius45 = 10,
309    border_dash45 = NULL,
310    border_weight45 = 1,
311    border_color46 = "white",
312    border_size46 = 1,
313    border_style46 = "solid",
314    border_radius46 = 10,
315    border_dash46 = NULL,
316    border_weight46 = 1,
317    border_color47 = "white",
318    border_size47 = 1,
319    border_style47 = "solid",
320    border_radius47 = 10,
321    border_dash47 = NULL,
322    border_weight47 = 1,
323    border_color48 = "white",
324    border_size48 = 1,
325    border_style48 = "solid",
326    border_radius48 = 10,
327    border_dash48 = NULL,
328    border_weight48 = 1,
329    border_color49 = "white",
330    border_size49 = 1,
331    border_style49 = "solid",
332    border_radius49 = 10,
333    border_dash49 = NULL,
334    border_weight49 = 1,
335    border_color50 = "white",
336    border_size50 = 1,
337    border_style50 = "solid",
338    border_radius50 = 10,
339    border_dash50 = NULL,
340    border_weight50 = 1,
341    border_color51 = "white",
342    border_size51 = 1,
343    border_style51 = "solid",
344    border_radius51 = 10,
345    border_dash51 = NULL,
346    border_weight51 = 1,
347    border_color52 = "white",
348    border_size52 = 1,
349    border_style52 = "solid",
350    border_radius52 = 10,
351    border_dash52 = NULL,
352    border_weight52 = 1,
353    border_color53 = "white",
354    border_size53 = 1,
355    border_style53 = "solid",
356    border_radius53 = 10,
357    border_dash53 = NULL,
358    border_weight53 = 1,
359    border_color54 = "white",
360    border_size54 = 1,
361    border_style54 = "solid",
362    border_radius54 = 10,
363    border_dash54 = NULL,
364    border_weight54 = 1,
365    border_color55 = "white",
366    border_size55 = 1,
367    border_style55 = "solid",
368    border_radius55 = 10,
369    border_dash55 = NULL,
370    border_weight55 = 1,
371    border_color56 = "white",
372    border_size56 = 1,
373    border_style56 = "solid",
374    border_radius56 = 10,
375    border_dash56 = NULL,
376    border_weight56 = 1,
377    border_color57 = "white",
378    border_size57 = 1,
379    border_style57 = "solid",
380    border_radius57 = 10,
381    border_dash57 = NULL,
382    border_weight57 = 1,
383    border_color58 = "white",
384    border_size58 = 1,
385    border_style58 = "solid",
386    border_radius58 = 10,
387    border_dash58 = NULL,
388    border_weight58 = 1,
389    border_color59 = "white",
390    border_size59 = 1,
391    border_style59 = "solid",
392    border_radius59 = 10,
393    border_dash59 = NULL,
394    border_weight59 = 1,
395    border_color60 = "white",
396    border_size60 = 1,
397    border_style60 = "solid",
398    border_radius60 = 10,
399    border_dash60 = NULL,
400    border_weight60 = 1,
401    border_color61 = "white",
402    border_size61 = 1,
403    border_style61 = "solid",
404    border_radius61 = 10,
405    border_dash61 = NULL,
406    border_weight61 = 1,
407    border_color62 = "white",
408    border_size62 = 1,
409    border_style62 = "solid",
410    border_radius62 = 10,
411    border_dash62 = NULL,
412    border_weight62 = 1,
413    border_color63 = "white",
414    border_size63 = 1,
415    border_style63 = "solid",
416    border_radius63 = 10,
417    border_dash63 = NULL,
418    border_weight63 = 1,
419    border_color64 = "white",
420    border_size64 = 1,
421    border_style64 = "solid",
422    border_radius64 = 10,
423    border_dash64 = NULL,
424    border_weight64 = 1,
425    border_color65 = "white",
426    border_size65 = 1,
427    border_style65 = "solid",
428    border_radius65 = 10,
429    border_dash65 = NULL,
430    border_weight65 = 1,
431    border_color66 = "white",
432    border_size66 = 1,
433    border_style66 = "solid",
434    border_radius66 = 10,
435    border_dash66 = NULL,
436    border_weight66 = 1,
437    border_color67 = "white",
438    border_size67 = 1,
439    border_style67 = "solid",
440    border_radius67 = 10,
441    border_dash67 = NULL,
442    border_weight67 = 1,
443    border_color68 = "white",
444    border_size68 = 1,
445    border_style68 = "solid",
446    border_radius68 = 10,
447    border_dash68 = NULL,
448    border_weight68 = 1,
449    border_color69 = "white",
450    border_size69 = 1,
451    border_style69 = "solid",
452    border_radius69 = 10,
453    border_dash69 = NULL,
454    border_weight69 = 1,
455    border_color70 = "white",
456    border_size70 = 1,
457    border_style70 = "solid",
458    border_radius70 = 10,
459    border_dash70 = NULL,
460    border_weight70 = 1,
461    border_color71 = "white",
462    border_size71 = 1,
463    border_style71 = "solid",
464    border_radius71 = 10,
465    border_dash71 = NULL,
466    border_weight71 = 1,
467    border_color72 = "white",
468    border_size72 = 1,
469    border_style72 = "solid",
470    border_radius72 = 10,
471    border_dash72 = NULL,
472    border_weight72 = 1,
473    border_color73 = "white",
474    border_size73 = 1,
475    border_style73 = "solid",
476    border_radius73 = 10,
477    border_dash73 = NULL,
478    border_weight73 = 1,
479    border_color74 = "white",
480    border_size74 = 1,
481    border_style74 = "solid",
482    border_radius74 = 10,
483    border_dash74 = NULL,
484    border_weight74 = 1,
485    border_color75 = "white",
486    border_size75 = 1,
487    border_style75 = "solid",
488    border_radius75 = 10,
489    border_dash75 = NULL,
490    border_weight75 = 1,
491    border_color76 = "white",
492    border_size76 = 1,
493    border_style76 = "solid",
494    border_radius76 = 10,
495    border_dash76 = NULL,
496    border_weight76 = 1,
497    border_color77 = "white",
498    border_size77 = 1,
499    border_style77 = "solid",
500    border_radius77 = 10,
501    border_dash77 = NULL,
502    border_weight77 = 1,
503    border_color78 = "white",
504    border_size78 = 1,
505    border_style78 = "solid",
506    border_radius78 = 10,
507    border_dash78 = NULL,
508    border_weight78 = 1,
509    border_color79 = "white",
510    border_size79 = 1,
511    border_style79 = "solid",
512    border_radius79 = 10,
513    border_dash79 = NULL,
514    border_weight79 = 1,
515    border_color80 = "white",
516    border_size80 = 1,
517    border_style80 = "solid",
518    border_radius80 = 10,
519    border_dash80 = NULL,
520    border_weight80 = 1,
521    border_color81 = "white",
522    border_size81 = 1,
523    border_style81 = "solid",
524    border_radius81 = 10,
525    border_dash81 = NULL,
526    border_weight81 = 1,
527    border_color82 = "white",
528    border_size82 = 1,
529    border_style82 = "solid",
530    border_radius82 = 10,
531    border_dash82 = NULL,
532    border_weight82 = 1,
533    border_color83 = "white",
534    border_size83 = 1,
535    border_style83 = "solid",
536    border_radius83 = 10,
537    border_dash83 = NULL,
538    border_weight83 = 1,
539    border_color84 = "white",
540    border_size84 = 1,
541    border_style84 = "solid",
542    border_radius84 = 10,
543    border_dash84 = NULL,
544    border_weight84 = 1,
545    border_color85 = "white",
546    border_size85 = 1,
547    border_style85 = "solid",
548    border_radius85 = 10,
549    border_dash85 = NULL,
550    border_weight85 = 1,
551    border_color86 = "white",
552    border_size86 = 1,
553    border_style86 = "solid",
554    border_radius86 = 10,
555    border_dash86 = NULL,
556    border_weight86 = 1,
557    border_color87 = "white",
558    border_size87 = 1,
559    border_style87 = "solid",
560    border_radius87 = 10,
561    border_dash87 = NULL,
562    border_weight87 = 1,
563    border_color88 = "white",
564    border_size88 = 1,
565    border_style88 = "solid",
566    border_radius88 = 10,
567    border_dash88 = NULL,
568    border_weight88 = 1,
569    border_color89 = "white",
570    border_size89 = 1,
571    border_style89 = "solid",
572    border_radius89 = 10,
573    border_dash89 = NULL,
574    border_weight89 = 1,
575    border_color90 = "white",
576    border_size90 = 1,
577    border_style90 = "solid",
578    border_radius90 = 10,
579    border_dash90 = NULL,
580    border_weight90 = 1,
581    border_color91 = "white",
582    border_size91 = 1,
583    border_style91 = "solid",
584    border_radius91 = 10,
585    border_dash91 = NULL,
586    border_weight91 = 1,
587    border_color92 = "white",
588    border_size92 = 1,
589    border_style92 = "solid",
590    border_radius92 = 10,
591    border_dash92 = NULL,
592    border_weight92 = 1,
593    border_color93 = "white",
594    border_size93 = 1,
595    border_style93 = "solid",
596    border_radius93 = 10,
597    border_dash93 = NULL,
598    border_weight93 = 1,
599    border_color94 = "white",
600    border_size94 = 1,
601    border_style94 = "solid",
602    border_radius94 = 10,
603    border_dash94 = NULL,
604    border_weight94 = 1,
605    border_color95 = "white",
606    border_size95 = 1,
607    border_style95 = "solid",
608    border_radius95 = 10,
609    border_dash95 = NULL,
610    border_weight95 = 1,
611    border_color96 = "white",
612    border_size96 = 1,
613    border_style96 = "solid",
614    border_radius96 = 10,
615    border_dash96 = NULL,
616    border_weight96 = 1,
617    border_color97 = "white",
618    border_size97 = 1,
619    border_style97 = "solid",
620    border_radius97 = 10,
621    border_dash97 = NULL,
622    border_weight97 = 1,
623    border_color98 = "white",
624    border_size98 = 1,
625    border_style98 = "solid",
626    border_radius98 = 10,
627    border_dash98 = NULL,
628    border_weight98 = 1,
629    border_color99 = "white",
630    border_size99 = 1,
631    border_style99 = "solid",
632    border_radius99 = 10,
633    border_dash99 = NULL,
634    border_weight99 = 1,
635    border_color100 = "white",
636    border_size100 = 1,
637    border_style100 = "solid",
638    border_radius100 = 10,
639    border_dash100 = NULL,
640    border_weight100 = 1,
641    border_color101 = "white",
642    border_size101 = 1,
643    border_style101 = "solid",
644    border_radius101 = 10,
645    border_dash101 = NULL,
646    border_weight101 = 1,
647    border_color102 = "white",
648    border_size102 = 1,
649    border_style102 = "solid",
650    border_radius102 = 10,
651    border_dash102 = NULL,
652    border_weight102 = 1,
653    border_color103 = "white",
654    border_size103 = 1,
655    border_style103 = "solid",
656    border_radius103 = 10,
657    border_dash103 = NULL,
658    border_weight103 = 1,
659    border_color104 = "white",
660    border_size104 = 1,
661    border_style104 = "solid",
662    border_radius104 = 10,
663    border_dash104 = NULL,
664    border_weight104 = 1,
665    border_color105 = "white",
666    border_size105 = 1,
667    border_style105 = "solid",
668    border_radius105 = 10,
669    border_dash105 = NULL,
670    border_weight105 = 1,
671    border_color106 = "white",
672    border_size106 = 1,
673    border_style106 = "solid",
674    border_radius106 = 10,
675    border_dash106 = NULL,
676    border_weight106 = 1,
677    border_color107 = "white",
678    border_size107 = 1,
679    border_style107 = "solid",
680    border_radius107 = 10,
681    border_dash107 = NULL,
682    border_weight107 = 1,
683    border_color108 = "white",
684    border_size108 = 1,
685    border_style108 = "solid",
686    border_radius108 = 10,
687    border_dash108 = NULL,
688    border_weight108 = 1,
689    border_color109 = "white",
690    border_size109 = 1,
691    border_style109 = "solid",
692    border_radius109 = 10,
693    border_dash109 = NULL,
694    border_weight109 = 1,
695    border_color110 = "white",
696    border_size110 = 1,
697    border_style110 = "solid",
698    border_radius110 = 10,
699    border_dash110 = NULL,
700    border_weight110 = 1,
701    border_color111 = "white",
702    border_size111 = 1,
703    border_style111 = "solid",
704    border_radius111 = 10,
705    border_dash111 = NULL,
706    border_weight111 = 1,
707    border_color112 = "white",
708    border_size112 = 1,
709    border_style112 = "solid",
710    border_radius112 = 10,
711    border_dash112 = NULL,
712    border_weight112 = 1,
713    border_color113 = "white",
714    border_size113 = 1,
715    border_style113 = "solid",
716    border_radius113 = 10,
717    border_dash113 = NULL,
718    border_weight113 = 1,
719    border_color114 = "white",
720    border_size114 = 1,
721    border_style114 = "solid",
722    border_radius114 = 10,
723    border_dash114 = NULL,
724    border_weight114 = 1,
725    border_color115 = "white",
726    border_size115 = 1,
727    border_style115 = "solid",
728    border_radius115 = 10,
729    border_dash115 = NULL,
730    border_weight115 = 1,
731    border_color116 = "white",
732    border_size116 = 1,
733    border_style116 = "solid",
734    border_radius116 = 10,
735    border_dash116 = NULL,
736    border_weight116 = 1,
737    border_color117 = "white",
738    border_size117 = 1,
739    border_style117 = "solid",
740    border_radius117 = 10,
741    border_dash117 = NULL,
742    border_weight117 = 1,
743    border_color118 = "white",
744    border_size118 = 1,
745    border_style118 = "solid",
746    border_radius118 = 10,
747    border_dash118 = NULL,
748    border_weight118 = 1,
749    border_color119 = "white",
750    border_size119 = 1,
751    border_style119 = "solid",
752    border_radius119 = 10,
753    border_dash119 = NULL,
754    border_weight119 = 1,
755    border_color120 = "white",
756    border_size120 = 1,
757    border_style120 = "solid",
758    border_radius120 = 10,
759    border_dash120 = NULL,
760    border_weight120 = 1,
761    border_color121 = "white",
762    border_size121 = 1,
763    border_style121 = "solid",
764    border_radius121 = 10,
765    border_dash121 = NULL,
766    border_weight121 = 1,
767    border_color122 = "white",
768    border_size122 = 1,
769    border_style122 = "solid",
770    border_radius122 = 10,
771    border_dash122 = NULL,
772    border_weight122 = 1,
773    border_color123 = "white",
774    border_size123 = 1,
775    border_style123 = "solid",
776    border_radius123 = 10,
777    border_dash123 = NULL,
778    border_weight123 = 1,
779    border_color124 = "white",
780    border_size124 = 1,
781    border_style124 = "solid",
782    border_radius124 = 10,
783    border_dash124 = NULL,
784    border_weight124 = 1,
785    border_color125 = "white",
786    border_size125 = 1,
787    border_style125 = "solid",
788    border_radius125 = 10,
789    border_dash125 = NULL,
790    border_weight125 = 1,
791    border_color126 = "white",
792    border_size126 = 1,
793    border_style126 = "solid",
794    border_radius126 = 10,
795    border_dash126 = NULL,
796    border_weight126 = 1,
797    border_color127 = "white",
798    border_size127 = 1,
799    border_style127 = "solid",
800    border_radius127 = 10,
801    border_dash127 = NULL,
802    border_weight127 = 1,
803    border_color128 = "white",
804    border_size128 = 1,
805    border_style128 = "solid",
806    border_radius128 = 10,
807    border_dash128 = NULL,
808    border_weight128 = 1,
809    border_color129 = "white",
810    border_size129 = 1,
811    border_style129 = "solid",
812    border_radius129 = 10,
813    border_dash129 = NULL,
814    border_weight129 = 1,
815    border_color130 = "white",
816    border_size130 = 1,
817    border_style130 = "solid",
818    border_radius130 = 10,
819    border_dash130 = NULL,
820    border_weight130 = 1,
821    border_color131 = "white",
822    border_size131 = 1,
823    border_style131 = "solid",
824    border_radius131 = 10,
825    border_dash131 = NULL,
826    border_weight131 = 1,
827    border_color132 = "white",
828    border_size132 = 1,
829    border_style132 = "solid",
830    border_radius132 = 10,
831    border_dash132 = NULL,
832    border_weight132 = 1,
833    border_color133 = "white",
834    border_size133 = 1,
835    border_style133 = "solid",
836    border_radius133 = 10,
837    border_dash133 = NULL,
838    border_weight133 = 1,
839    border_color134 = "white",
840    border_size134 = 1,
841    border_style134 = "solid",
842    border_radius134 = 10,
843    border_dash134 = NULL,
844    border_weight134 = 1,
845    border_color135 = "white",
846    border_size135 = 1,
847    border_style135 = "solid",
848    border_radius135 = 10,
849    border_dash135 = NULL,
850    border_weight135 = 1,
851    border_color136 = "white",
852    border_size136 = 1,
853    border_style136 = "solid",
854    border_radius136 = 10,
855    border_dash136 = NULL,
856    border_weight136 = 1,
857    border_color137 = "white",
858    border_size137 = 1,
859    border_style137 = "solid",
860    border_radius137 = 10,
861    border_dash137 = NULL,
862    border_weight137 = 1,
863    border_color138 = "white",
864    border_size138 = 1,
865    border_style138 = "solid",
866    border_radius138 = 10,
867    border_dash138 = NULL,
868    border_weight138 = 1,
869    border_color139 = "white",
870    border_size139 = 1,
871    border_style139 = "solid",
872    border_radius139 = 10,
873    border_dash139 = NULL,
874    border_weight139 = 1,
875    border_color140 = "white",
876    border_size140 = 1,
877    border_style140 = "solid",
878    border_radius140 = 10,
879    border_dash140 = NULL,
880    border_weight140 = 1,
881    border_color141 = "white",
882    border_size141 = 1,
883    border_style141 = "solid",
884    border_radius141 = 10,
885    border_dash141 = NULL,
886    border_weight141 = 1,
887    border_color142 = "white",
888    border_size142 = 1,
889    border_style142 = "solid",
890    border_radius142 = 10,
891    border_dash142 = NULL,
892    border_weight142 = 1,
893    border_color143 = "white",
8
```

Make Data Friendly

How many companies are run by women, and why does it matter?



SUBMITTED BY MASAKO HIRAGA ON THU, 03/08/2018

Share Tweet LinkedIn Print

Also available in: [Español](#) | [العربية](#) | [Français](#)

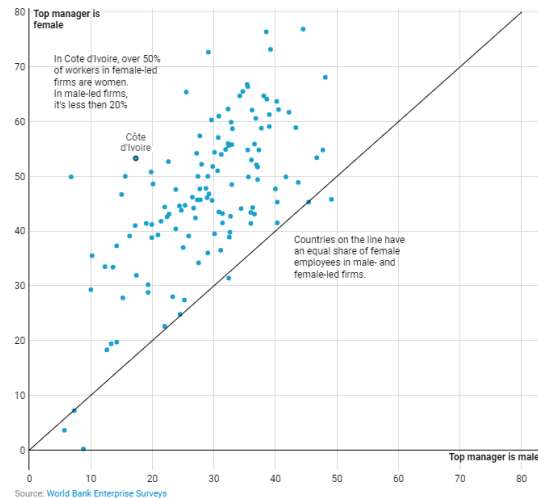
Happy International Women's Day! This is an important year to celebrate – from global politics to the Oscars last weekend, gender equality and inclusion are firmly on the agenda.

But outside movies and matters of government, we see the effects on gender equality every day, in how we live and work. One area we have data on comes from companies: what share of firms have a female CEO or top manager?

Better representation of women in business is important. It ensures a variety of views and ideas are represented, and when the top manager of a firm is woman, that firm is likely to have a larger share of permanent female workers.

Firms Led by Women Have More Female Employees

Percentage of permanent full-time workers that are female



World Bank Data @worldbankdata · Oct 19

Despite penalties existing in [#Kiribati](#), the [#SolomonIslands](#), and [#Vanuatu](#), around 40 percent of women in these countries report violence from an intimate partner. Learn more: wrlid.bg/hvGL30kdbak [#SDGAtlas](#) [#SDG5](#)

Laws may help protect women from violence, but two out of five countries have no clear penalties for domestic violence.

Are there clear criminal penalties for domestic violence? 2017

SDG 5.2

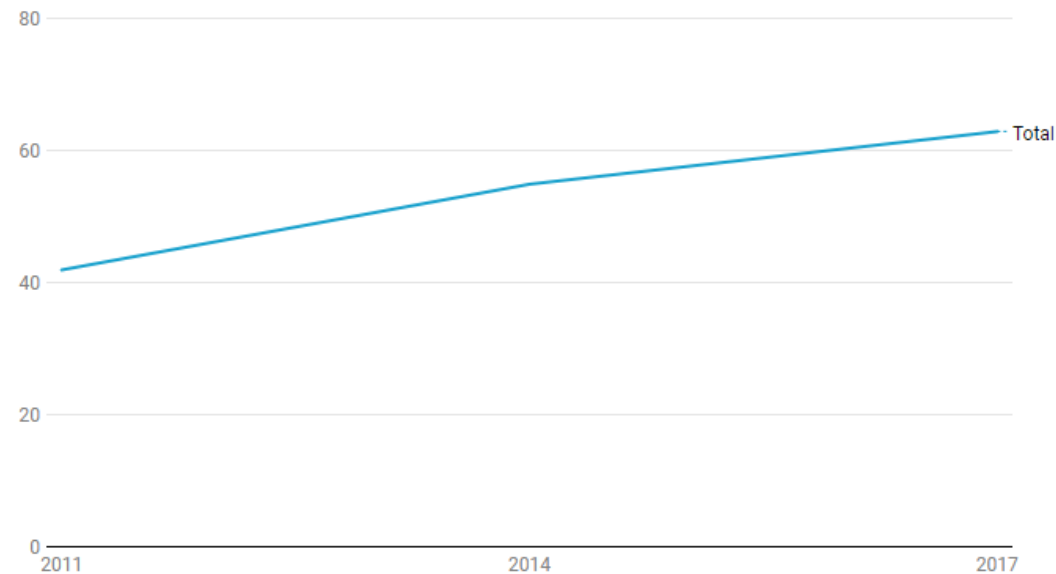


Source: World Bank Women, Business and the Law 2018, World Development Indicators (SG.VAW.1549.ZS)

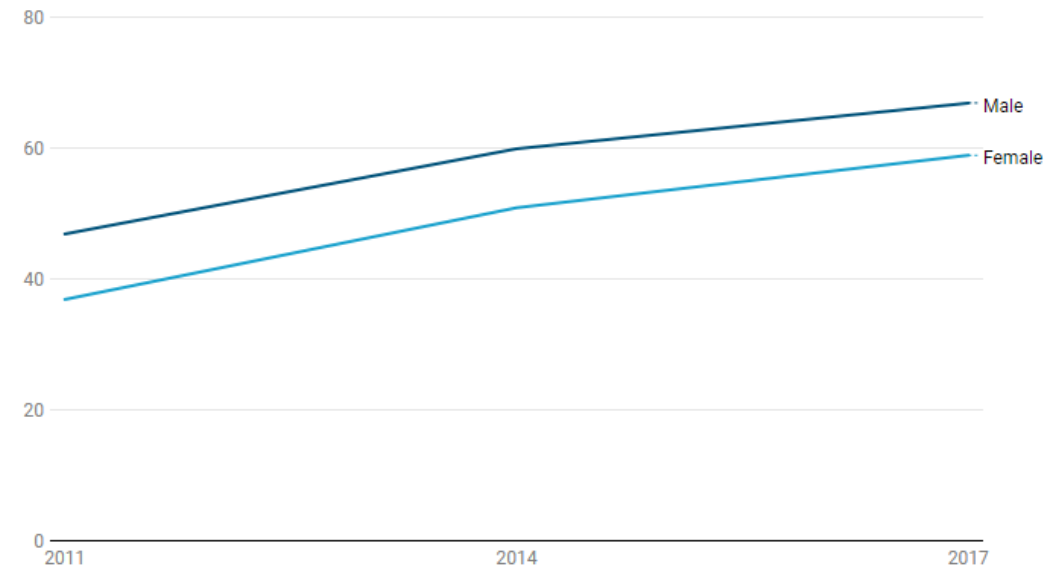
Open data is important for gender equality

Open data is important for gender equality

Account at a financial institution (%), Low and Middle income countries

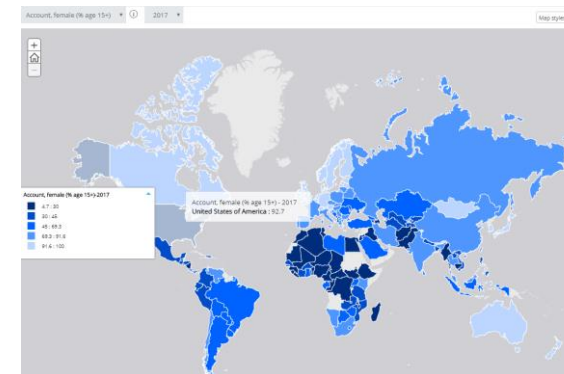
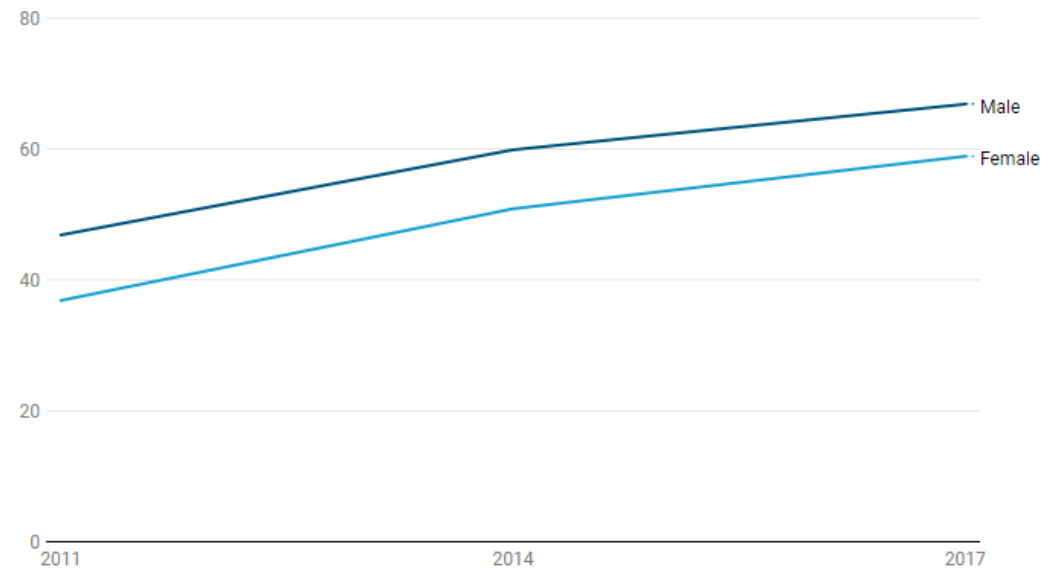


Account at a financial institution (%), Low and Middle income countries

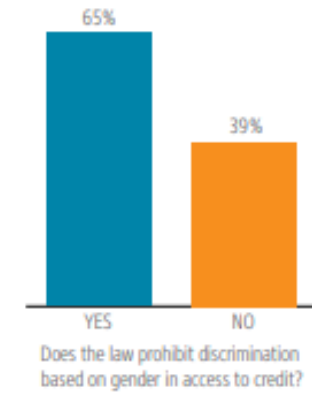


Source : Global Index

Account at a financial institution (%), Low and Middle income countries



Account at a financial institution, female (% age 15+)



Source : Women, Business and the Low and Global Index (2014)



Drives Women's economic empowerment through data and knowledge sharing

"This type of capacity building and access to information is key; it helps us understand that as women we often do not know our rights. I was able to learn about women's rights in other countries and how progress is being achieved. It enabled me to see how others started the process we are trying to undertake in my country, and build on the examples,"

"Our women and girls are not aware of most of their rights. And we can't promote change in laws without learning about what our neighbors and other countries have done that can have a positive impact on women. We don't always have access to this type of information, and learning about laws that can promote women's economic empowerment and more inclusive policies for women is critical for our advocacy work"