



Global Groups Register

In 2015, the **UN Statistical Commission** established the UN Expert Group on International Trade and Economic Globalization Statistics to address measurement challenges emerging from globalization



In **decision 46/107**, the Statistical Commission agreed with the proposed work plan of the Expert Group to *Promote and advance the creation of a **global enterprise group register**, building on and taking into account lessons learned from the **EuroGroups Register** project*

EuroGroups Register (EGR)

- The EGR consists of all statistical units which are related to enterprise groups, which have at least one unit in the EU.
- A consistent and interoperable system of statistical business registers at the European level.
- Eurostat collects information on all statistical units belonging to enterprise groups from the NSOs in the European Statistical System.
- After a thorough and complex consolidation and validation process, the EGR presents harmonized information on the statistical units, including relationships and control.
- EGR to serve as the European population frame from which the member countries can consistently draw their samples.
- EGR access restricted to official SBR statisticians in EU NSOs.

Background on GGR

- Beginning in 2015, UNSD explored ways in which the GGR could be built based on the experience of the EGR.
- In 2016, formulated a strategy for developing the GGR based on lessons learned from the EGR – [Towards a possible Global Group Register. Can the European model for the EuroGroups Register and the European profiling be used at global level?](#) by Amerigo Liotti (Eurostat) and Ronald Jansen (UNSD)
 - **Built from publicly available sources**
 - **Identified possible sources for the GGR**
 - **Start with the feasibility for the GGR**
- GGR structure aligns as closely as possible to EGR variables.
- In 2019, UNSD focused efforts in profiling the **top 100 MNEs**:
 - **Defined profiling methods**
 - **Automatize the processing**

What is the GGR?

- A register of the world's largest MNE groups
- Identifies their legal structure across countries
- Is different from an SBR (and EGR) because it relies only on free public sources (no data input from national statistical offices)
- Builds upon lessons from EGR but not based on confidential EGR data

Main Benefits of a GGR

- To help statistical offices to understand the non-national part of the MNEs in their country
- To help facilitate data sharing among countries, using the GGR as a common, public source
- Help analyzing globalization effects and global value chains

Where we are now

- We have profiled 100+ MNEs
- The profiling is based on publicly available sources
- We are in the process of uploading the profiles into a graph database
- We hope to release a beta version soon



中国平安
PING AN



国家电网
STATE GRID



Exxon Mobil



中国石油



amazon

Alphabet



DAIMLER



J.P.Morgan

Walmart



COSTCO
WHOLESALE



HONDA



中国农业银行
AGRICULTURAL BANK OF CHINA



中國銀行
BANK OF CHINA

verizon



bp



TOTAL



أرامكو السعودية
saudi aramco



TOYOTA



Primary GGR Sources



PermID: Connecting Data to the World

Financial Filings



U.S. SECURITIES AND
EXCHANGE COMMISSION

Significant Subsidiaries of Wal-Mart Stores, Inc.

Subsidiary	Organized or Incorporated	Percent of Equity Securities Owned
Wal-Mart Stores East, LP	Delaware, U.S.	100%
Wal-Mart Stores Texas, LLC	Delaware, U.S.	100%
Wal-Mart Property Company	Delaware, U.S.	100%
Wal-Mart Real Estate Business Trust	Delaware, U.S.	100%
Sam's West, Inc.	Arkansas, U.S.	100%
Sam's East, Inc.	Arkansas, U.S.	100%
Sam's Property Company	Delaware, U.S.	100%
Sam's Real Estate Business Trust	Delaware, U.S.	100%
ASDA Group Limited	England	100%
Wal-Mart de Mexico, S.A.B. de C.V.	Mexico	71%
Wal-Mart Canada Corp.	Canada	100%
Wal-Mart Japan Holdings K.K.	Japan	100%
Walmart Chile S.A. ⁽¹⁾	Chile	100%
Massmart Holdings Ltd	South Africa	52%

Legal Entity Identifier

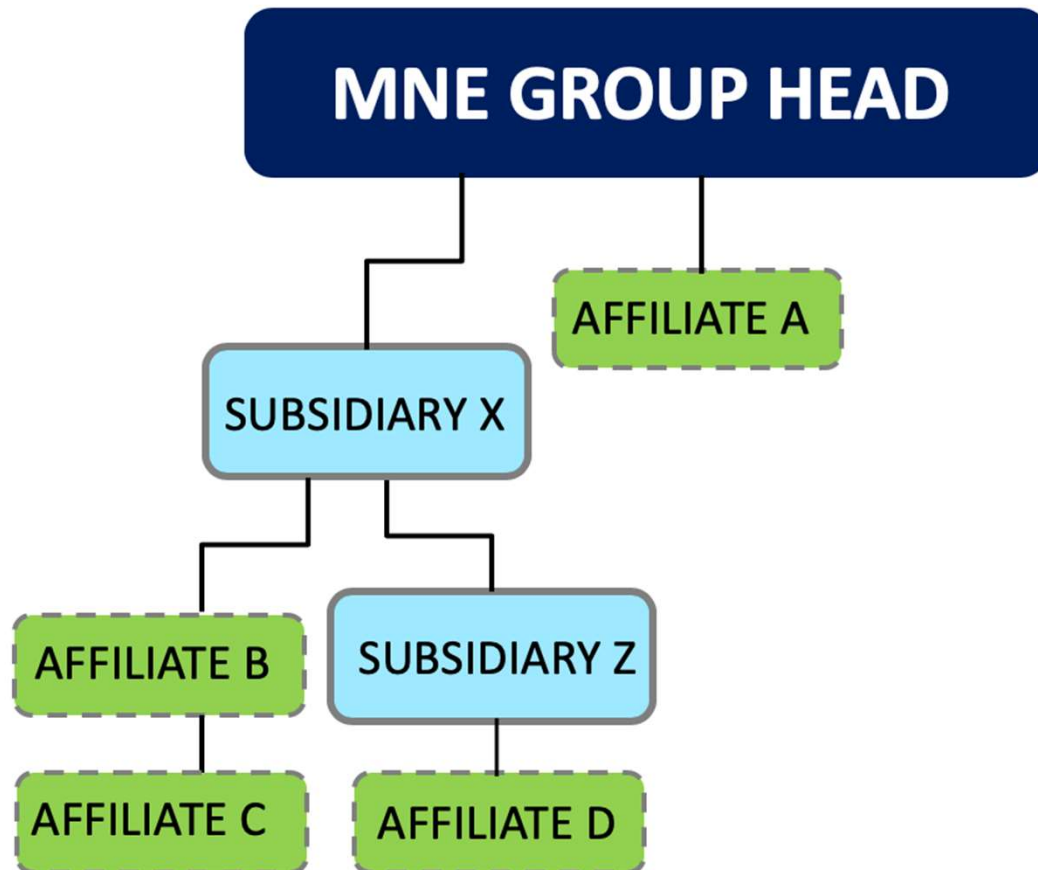


- Established by the G20 Financial Stability Board in 2014, the Global Legal Entity Identifier Foundation (GLEIF) is tasked to support the implementation and use of the **Legal Entity Identifier (LEI)**.
- The foundation is backed and overseen by public registration authorities from around the globe.
- First focused on financial firms; now expanding to other industries.
- Over 1.7 million total LEIs Issued
- Adding relationship data (who owns whom): **223,500 records**
- No restrictions on re-disseminating the data

GGR main demographic variables

- | |
|---|
| •GGR ID |
| •Company Name (legal name) |
| •Other Name (abbreviation or in original language characters) |
| •LEI |
| •Country jurisdiction (normally of legal address) |
| •Address (legal and HQ when they are both available) |
| •Revenues (mil US\$) and ref. year (when available) |
| •Assets (mil US\$) and ref. year (when available) |
| •# of Employees and ref. year (when available) |
| •Industry sector |
| •URL of corporate website |

GGR relationship structure



ULTIMATE PARENT:

controls 50% or more of another company and has no parent above it (normally the MNE group head).

PARENT:

has some control or influence over another company

CHILDREN:

companies that are controlled or influenced by parents. Can be:

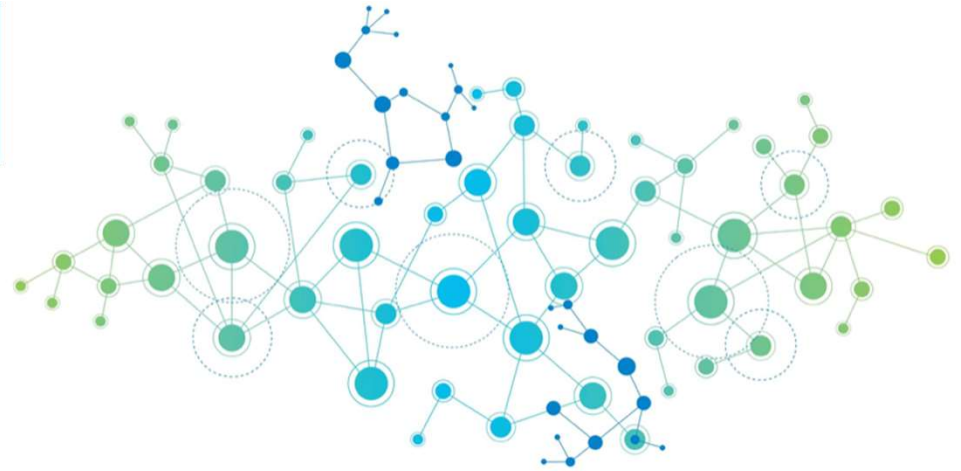
Subsidiary: when parent owns or controls 50% or more of the company

Non-subsidiary Affiliate: when a parent controls less than 50%

GGR main relationship variables

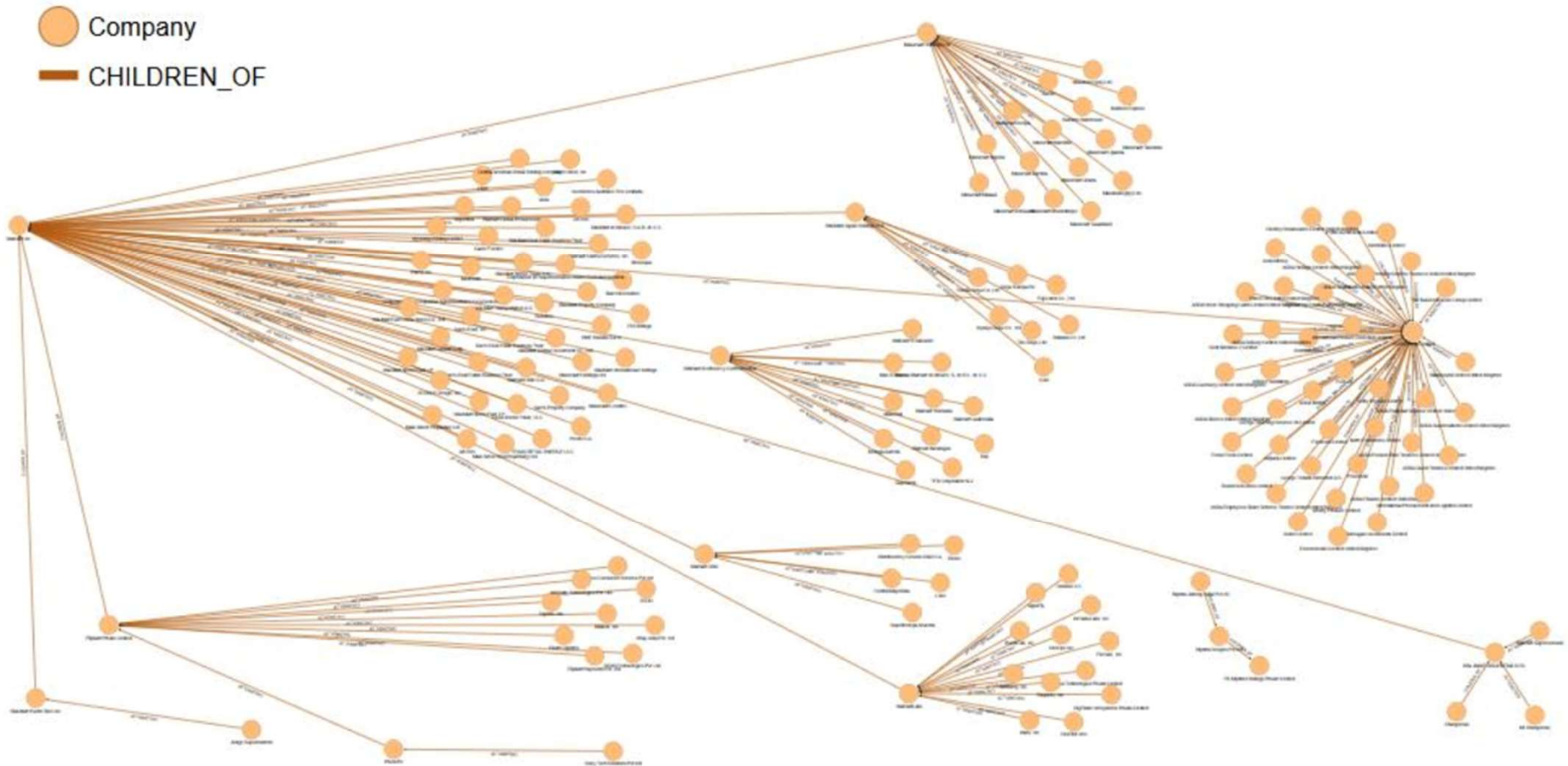
ULTIMATEPARENT_NAME	GGR_NAME of MNE Head ONLY if it is known that child company is a SUBSIDIARY or owns 50% or more (e.g., as listed in Annual Report or it is reported in GLEIF) and no other company owns the Ultimate Parent
ULTIMATEPARENT_LEI	LEI of Ultimate Parent from GLEIF (when available)
ULTPARENT_OWNERSHIP_PERCENT	Ultimate Parent's % ownership control, if known
PARENT_1	GGR_NAME of first known direct parent (can be a controlling parent or non-controlling parent – any type of parent)
PARENT1_LEI	LEI of first known parent (can be a controlling parent or non-controlling parent – any type of parent) from GLEIF (when available)
PARENT1_RELATIONSHIP	“Subsidiary”, “Non-subsidiary Affiliate”, “Joint Venture” or “Unknown”
PARENT1_OWNERSHIP_PERCENT	First known parent's % ownership (based on control), if known. We allow for multiple parents.

GGR database



- UNSD is deploying a Graph database
 - an open source version of OrientDB
- It is built for storing and analyzing relationship data
- The data entities and the relationships among them are pre-connected and do not require table joins or multiple scans across large tables.
- Relationships can be intuitively visualized in many different ways, which is helpful when dealing with complex structures of MNEs.

GGR preliminary data visualization



GGR preliminary data visualization

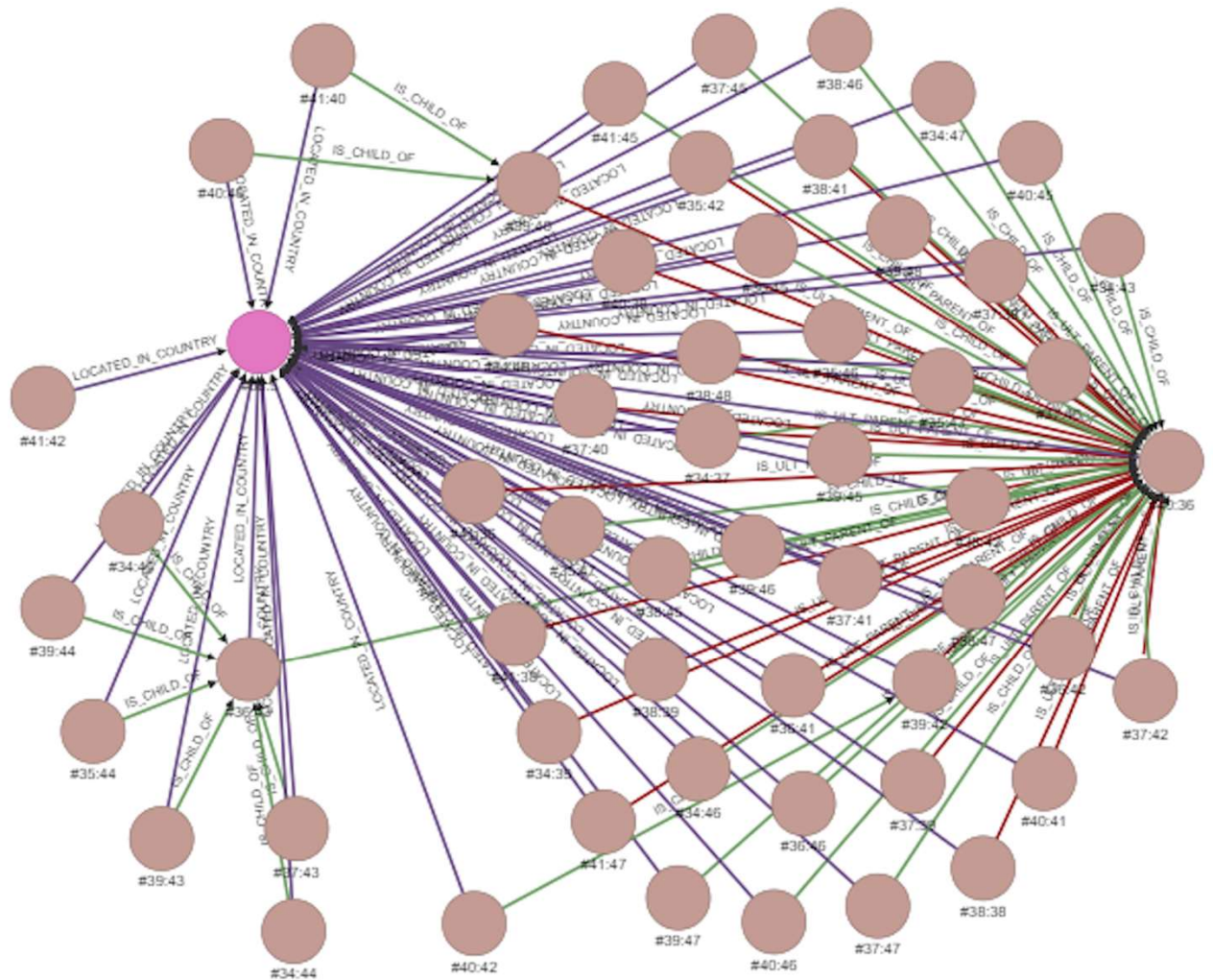
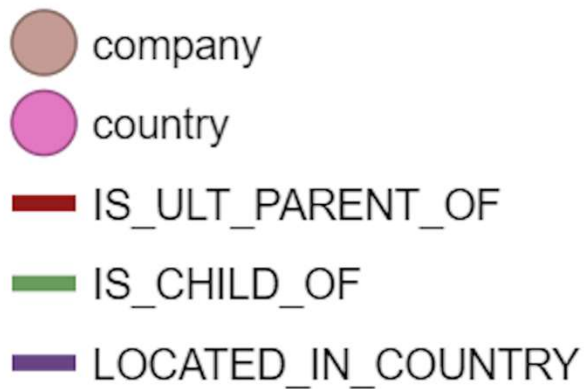
● company

— IS_CHILD_OF

— IS_ULT_PARENT_OF



GGR preliminary data visualization



GGR preliminary data visualization

company

source

country

industry

analyst

PROFILED_BY

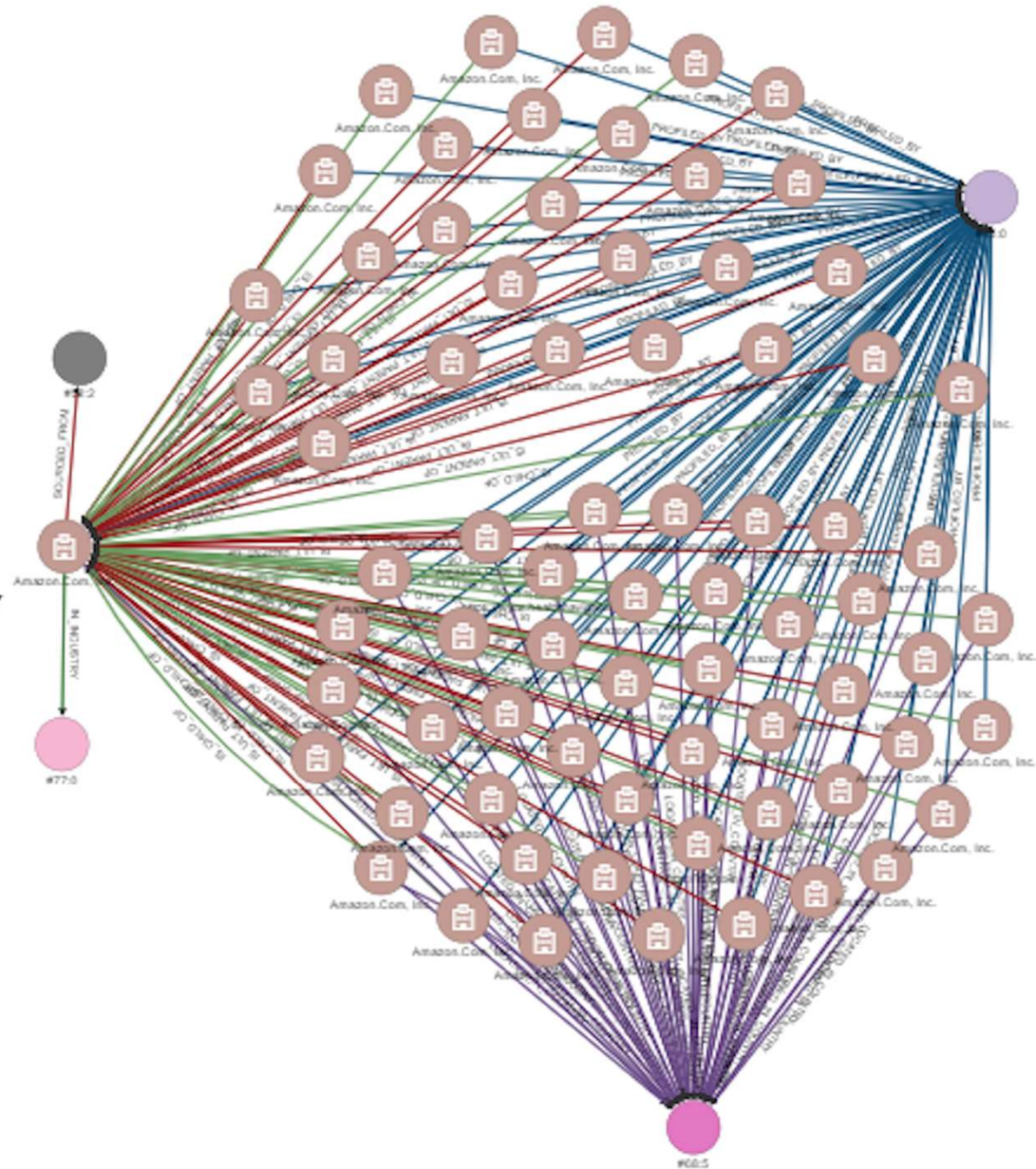
LOCATED_IN_COUNTRY

SOURCED_FROM

IN_INDUSTRY

IS_ULT_PARENT_OF

IS_CHILD_OF



GGR way forward



- Together with OECD, exploring possibilities of collaboration on ADIMA and the GGR
- Working on improving the database, creating visualizations and dashboards
- Identify analytical indicators that can be derived from the GGR
- Soon will be able to produce a beta version of the GGR (expected Q4 2020), possibly in collaboration with OECD
- Seek collaboration with other partners to to develop a strategy for updating the MNEs profiles
- Continue the automatization of the profiling
- Ongoing search of new data sources



Thank You!

Nancy Snyder
snydern@un.org