

# **UNCEBTS-Impact of COVID-19**

**Pivot Post COVID**

**Perspectives from Colombia**

**JUN / 2020**



**El futuro  
es de todos**

**Gobierno  
de Colombia**

**DANE** produces and disseminates official statistical information that describes the country's economic, social, and environmental reality. It has:

## 108 Statistical operations

To guarantee the integrity of the statistical process

86

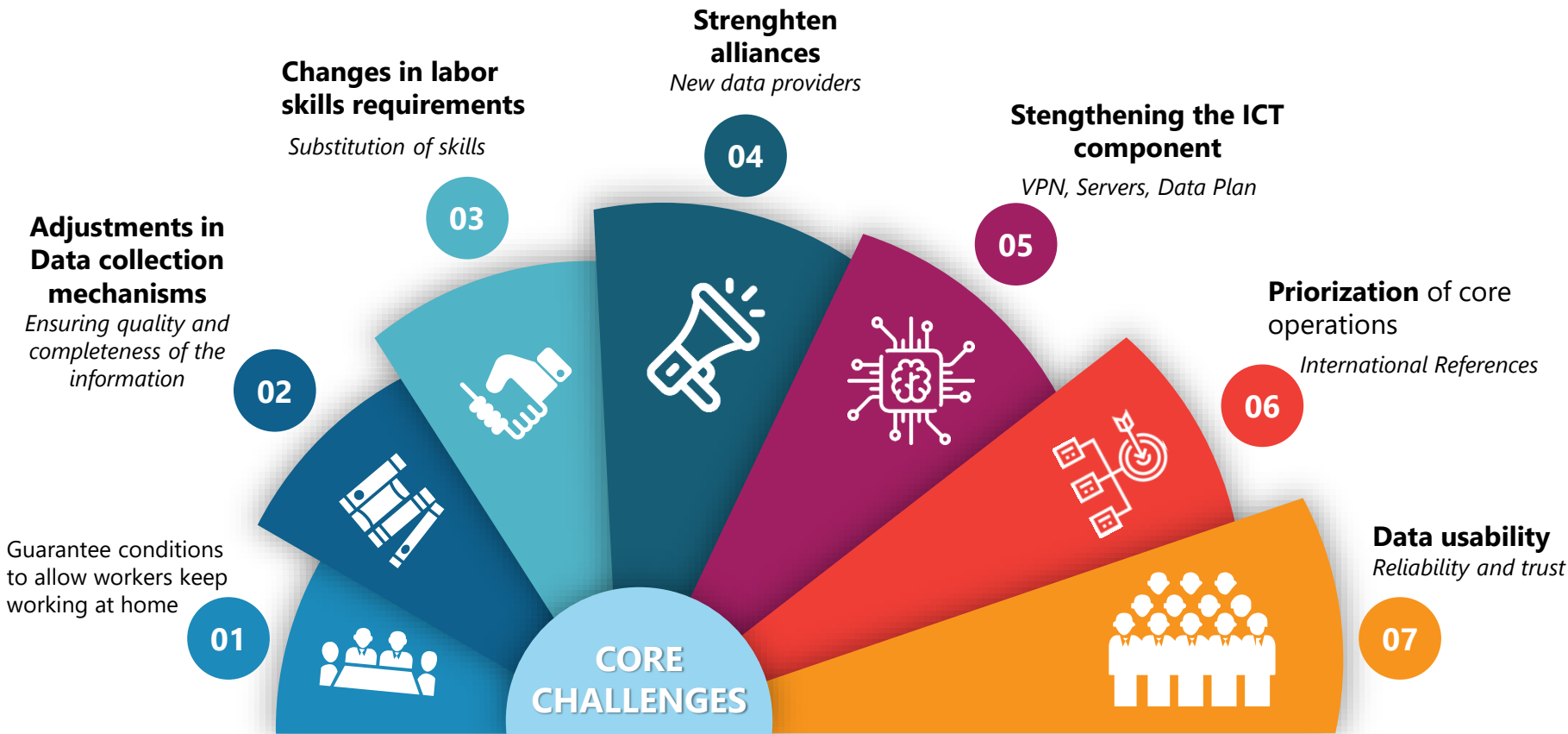
22

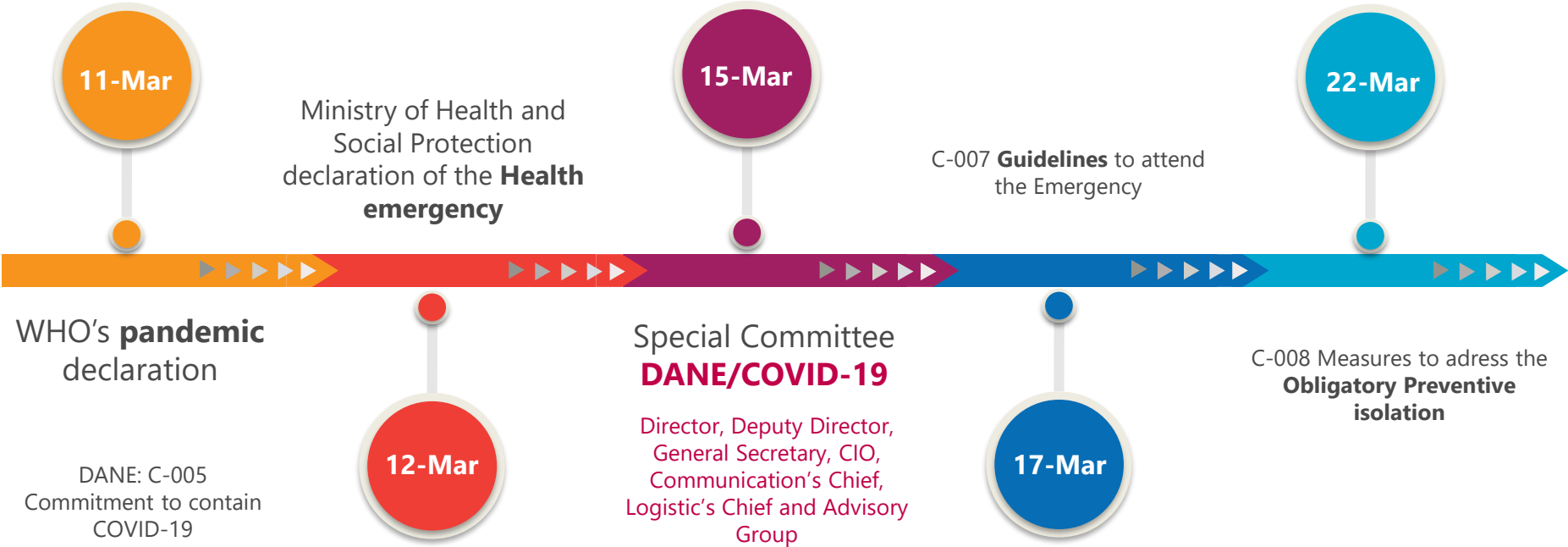
Without operational or methodological adjustments      With adjustments

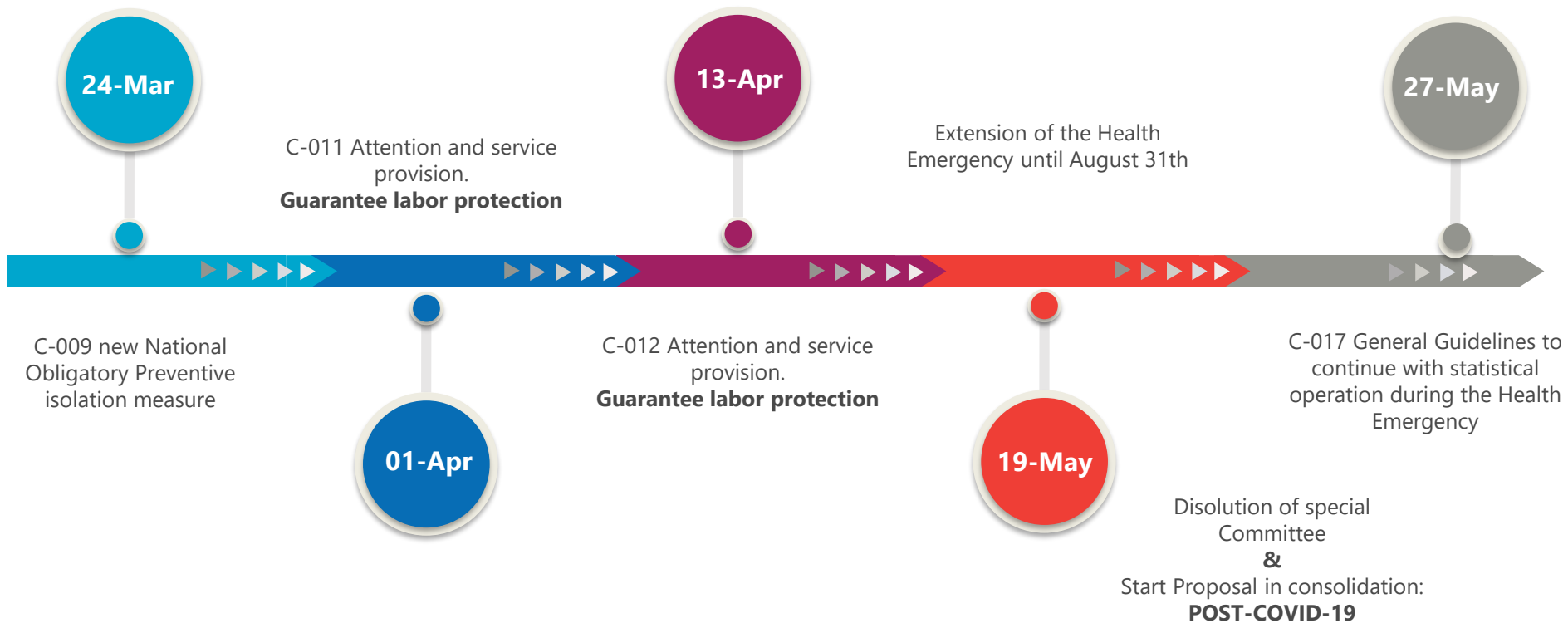
With the COVID-19 crisis, DANE has sought to measure potential negative impacts of the pandemic.

- two new surveys to monitor the impacts that COVID-19 may have on consumers, households and business











86 undisturbed operations

Geostatistical data production

Statistical planning and regulation

Statistical quality assessments

Implementation of the Statistical System

Multipurpose Cadastre and public policies



- Strengthening of biosafety protocols
- Strengthening of telephone directories
- Alternative collection methods
- Intensified monitoring of strategic operations
- Awareness of information sources
- Virtualization of the DANE Central operation, of training processes
- Identification of new needs
- New statistical models
- Identification of new sources
- Seasonal adjustment
- Survey modification
- Follow of the OIT new requirements



## 1. Timeliness:

Good data in almost real time (GPD for example)

## 2. Accuracy:

non complete information (e.g missing values) can represent a huge challenge in the accuracy of the estimations and data publication

## 3. Coherence:

Models and estimations must be guarantee coherence and validation with external data

## 4. Comprehensiveness:

The level of disaggregation and the detailed of the data could be affected if there are not good statistical practices

## 5. Reasonably detailed\*:

Following SNA 2008 for production and estimation of national accounts, the accuracy at the most disaggregated levels may vary.



- CPI: prices of non-motorized radio units to the staff's home
- Price web scraping for major supermarkets



Household survey:

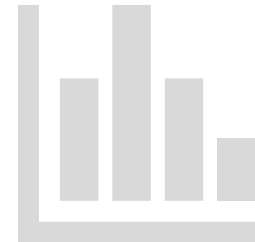
- Questionnaire cutout
- Transition to CATI
- Labor data missing value analysis
- New answer options created
- New COVID related questions
- Committees to adapt the survey to be more inclusive (before COVID)
- Pilot of the new survey in parallel with the already established

New data source:

- Utilities data
- Stock market data

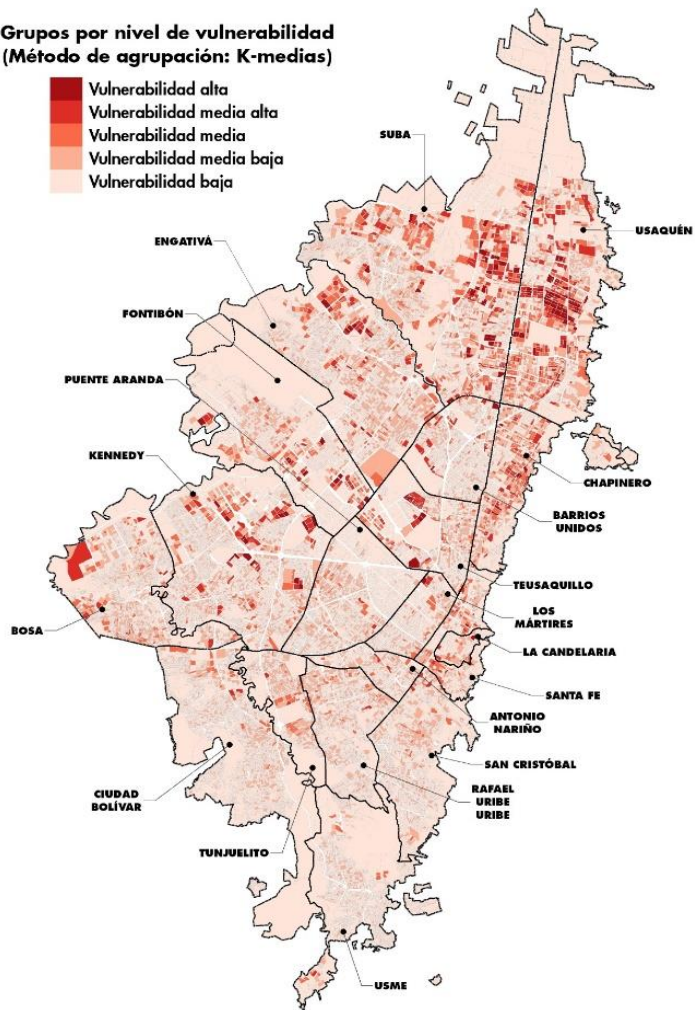
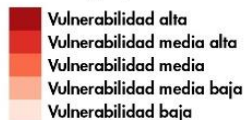


- Test for coincident Profile and Dynamic Common Factors
- NARX models (VEC and Johansen Correlation Test)
- Treatment outlier at the end of the serie (March 2020 modelled as outlier)





## Grupos por nivel de vulnerabilidad (Método de agrupación: K-medias)



# Our new COVID-related tools

## Experimental statistical models:

- Early estimation of principal data with 4 days of lag
- An initial inventory of models that help to estimate missing values in the conjunctural series.
- Statistical models to calibrate indicators

## New questionnaires:

- Implementation of a flash survey in order to data collection for taking the pulse of the economy to keep the industry, commerce, service enterprises, government informed of overall situation, the impact the crisis is having on business and employment and expectations on economic behavior under public policy measures .

## Vulnerability index:

Geographically identifying the most vulnerable population against COVID

## New questions:

Adding questions related to the COVID in the Colombian household survey

## Social Pulse Survey

**Social Pulse: measuring consumer's and households' assessment of their current economic situation and their expectations.**

In the light of the current crisis due to COVID-19 DANE, in partnership with UNICEF, will launch in July 2020 a new statistical operation, which aims to measure consumer's and households' assessment of their current economic situation or their expectations of future economic prospects.

The survey core is the **Consumer Confidence** module, which will be applied each month. Nonetheless, the survey includes additional modules to respond to the current needs that have arisen from the COVID-19 crisis.

## Our new statistical operations

### Survey modules:

1

**Consumer confidence**

3

**Home-care support**

2

**Subjective well-being**

4

**State aid policies**

5

**Children and teenager's well-being**

## Corporate Pulse Survey

## Our new statistical operations

### Survey modules:

**Corporate Pulse: monitoring perceptions of businessmen.**

In the light of the current crisis due to COVID-19 DANE launched a business survey in order to capture information on the current business situation and the way businessmen are adapting to the new circumstances.

**1**

**State of company operations**

**3**

**Adjustment mechanisms implemented**

**2**

**Negative impacts on company operations**

**4**

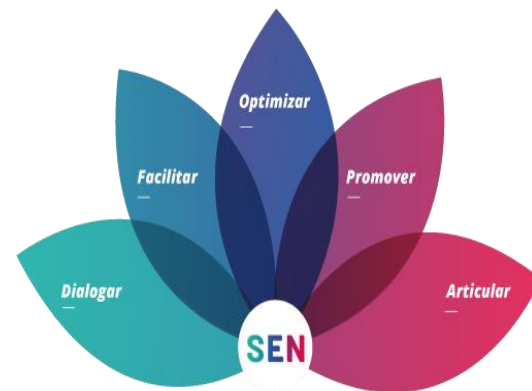
**Expectations about economic behavior**

**5**

**Perceptions on state aid policies for enterprises**

The **Data Stewardship** in a Post COVID scenario includes taking into consideration different elements to contribute to statistical production from the National Statistical System (SEN)

- **Collaborative and governance instances:** contribution from the information producers to make better decisions and improve the quality of statistical production: Data Management Committee
- **Formal initiatives for COVID monitoring:** joint work between information producers and those responsible for the implementation of public policy (national and local) in order to continue providing relevant information for decision-making
- **Importance of institutional capacities:** Data Stewardship requires a conscious exercise in capacity development (technical, regulatory, etc.) for all members of the Statistical System.
- **Ethical considerations:** the use of information in collaborative contexts, such as data stewardship requires the consideration of ethical risks in the use and transfer of information.



# **UNCEBTS-Impact of COVID-19**

## **Pivot Post COVID**

## **Perspectives from Colombia**

**JUN / 2020**



**El futuro  
es de todos**

**Gobierno  
de Colombia**