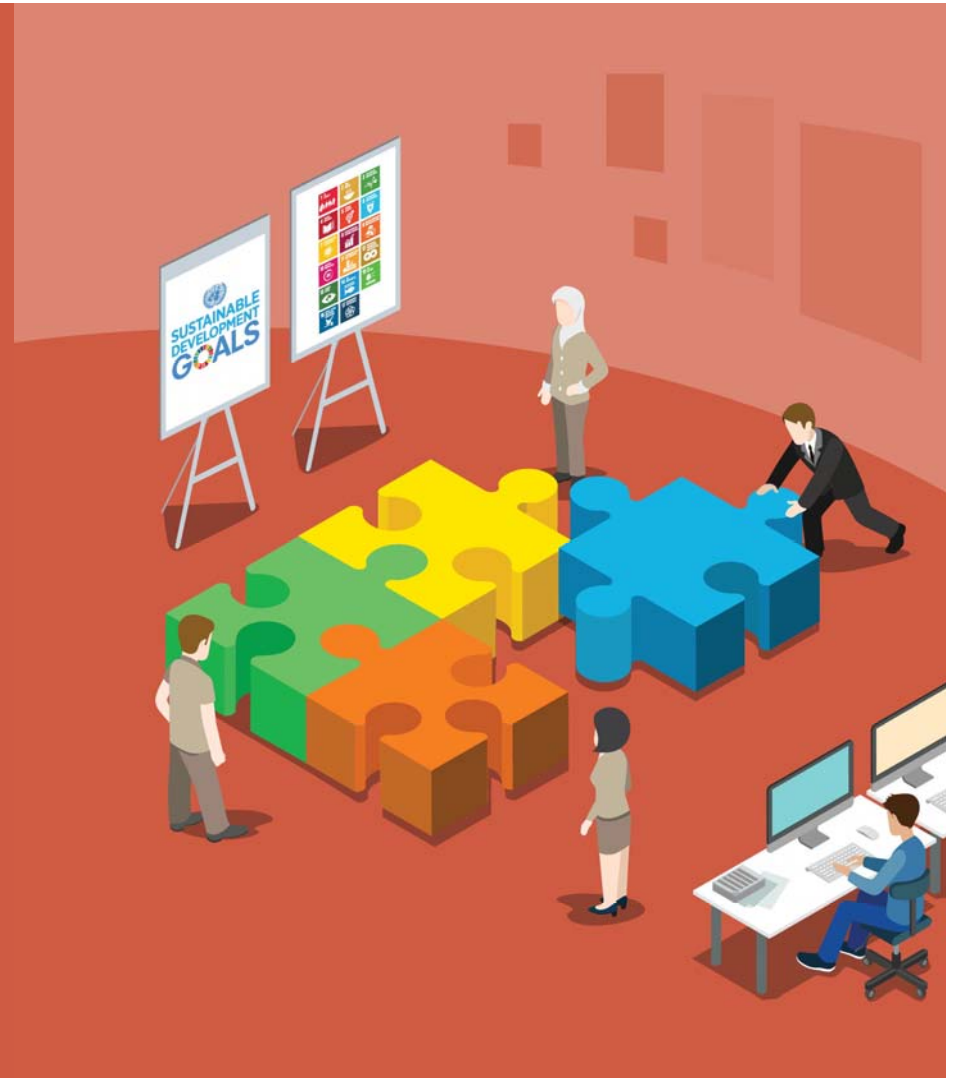


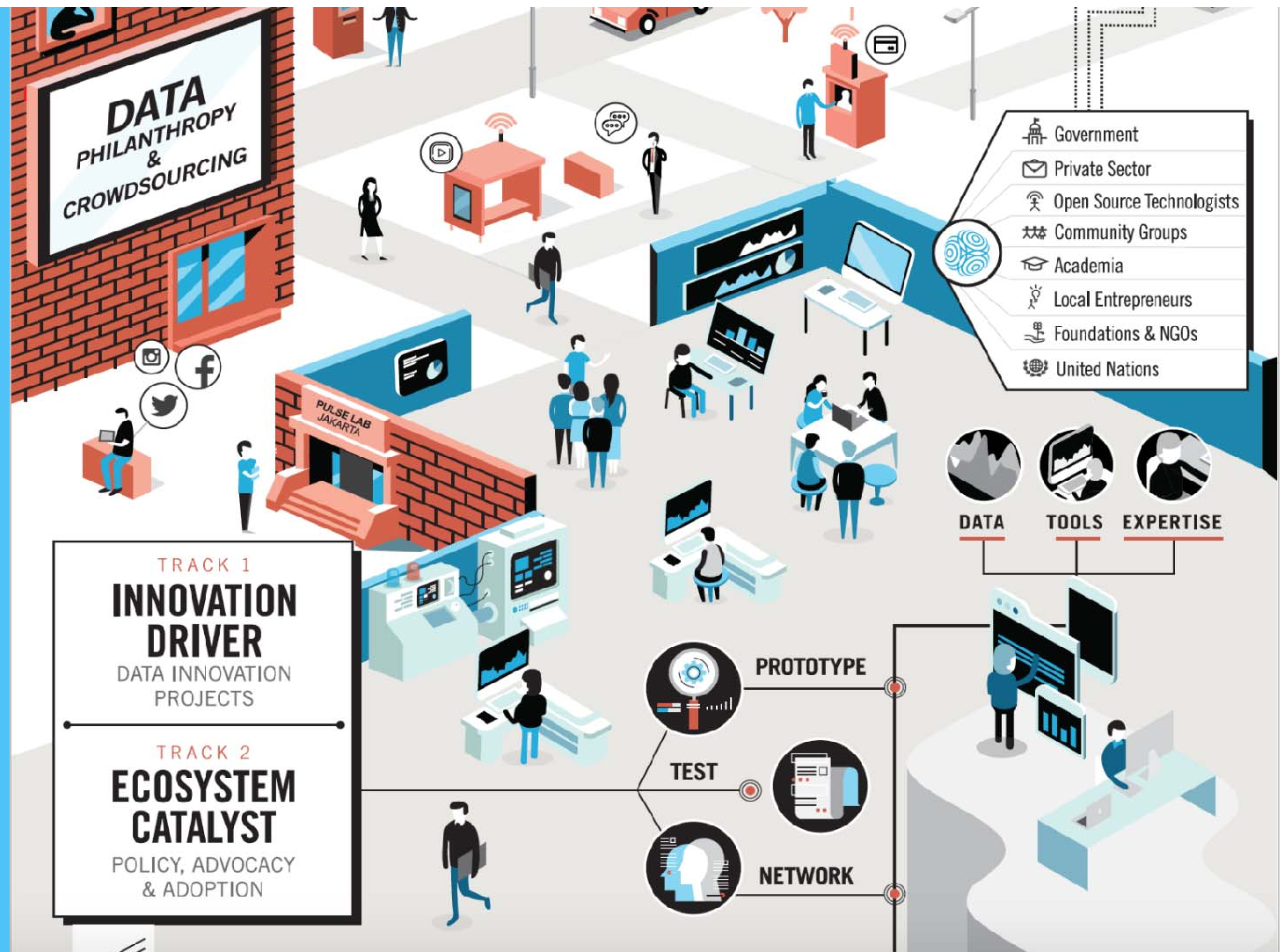
Exploring Data Collaboratives to Monitor SDGs





PULSE LAB JAKARTA

Part of the UN Global Pulse initiative, Pulse Lab Jakarta is an innovation lab that harnesses new sources of data to test approaches and create tools that support data-driven decision-making, responsive government and empowered communities.



Navigating the data ecosystem

Moving from supply to demand

Blending big data and thick data

Connecting dots and combining forces



Nowcasting food prices

Working with Bappenas, WFP, and later KAIST, Pulse Lab Jakarta developed a statistical model to extract prices for four commodities (beef, chicken, onion and chili) in Indonesia from public discussions on Twitter.

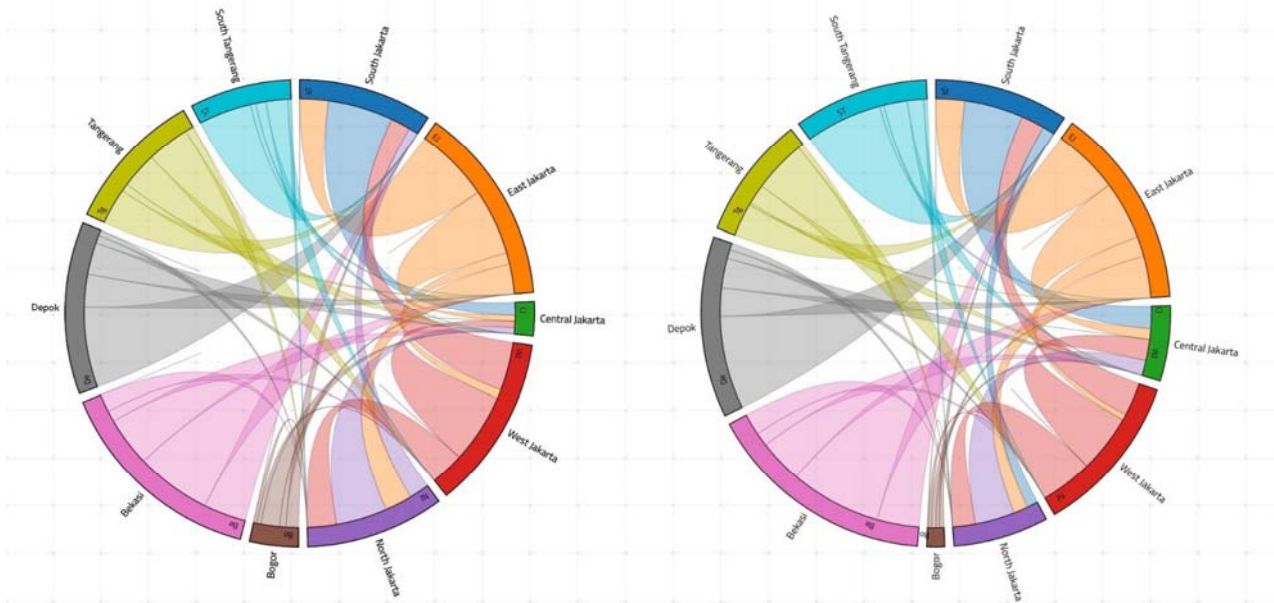
When the modeled prices were compared with the official food prices from the Indonesian Government, released later, the figures were closely correlated. This demonstrates that near real-time social media signals can function as a proxy for daily food price statistics, and an early warning mechanism for price fluctuations.



Commuting statistics from social media

Pulse Lab Jakarta worked with *Sekolah Tinggi Ilmu Statistik (STIS)* to test whether location information from social media on mobile devices could reveal commuting patterns.

The chord diagrams show that this could be a promising source of data for inferring commuting statistics in Greater Jakarta.



Climate Impact Tracking

In collaboration with WFP, our team analysed satellite imagery to map locations with climate and rainfall anomalies and to provide early warning alerts to policymakers.

The VAMPIRE (Vulnerability Analysis Monitoring Platform for Impact of Regional Events) platform provides map-based visualisations and three main layers: a baseline data layer (population data, socio-economic and food security surveys); a climate layer (rainfall anomaly, standardised precipitation index and vegetation health index); and an impact layer (economic vulnerability and exposure to drought).

See: <http://pulselabjakarta.id/vampire/>



Examining challenges

Building trust

“Using lightsabers to slice bread”

Whose voices are being counted?



More info:



plj@un.or.id



[@PulseLabJakarta](https://twitter.com/PulseLabJakarta)



[@PulseLabJakarta](https://www.instagram.com/PulseLabJakarta)



[@PulseLabJakarta](https://www.facebook.com/PulseLabJakarta)



pulselabjakarta.id

