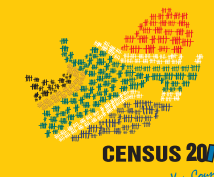




QUESTIONNAIRE FOR INSTITUTIONS ONLY

FOR STATISTICAL USE ONLY

C



FOR OFFICE USE ONLY

FOR STATISTICAL USE ONLY
 ENUMERATION AREA NUMBER

PROVINCE

LOCAL MUNICIPALITY

MAIN PLACE

SUB PLACE

PARTICULARS OF THE INSTITUTION

Unit number

Name of the institution

Block / Ward

Physical identification of the institution

Postal code

Telephone number

Number of persons in the institution

Total	Male	Female
<input type="text"/>	<input type="text"/>	<input type="text"/>

Map Reference Number

Listing Record Number

FIELD STAFF

Fieldworker ID No.

Supervisor ID No.

Signature

Signature

SHOULD YOU ENCOUNTER ANY DIFFICULTIES IN THE COMPLETION OF THE QUESTIONNAIRE, PLEASE CONTACT ON

OR PHONE THE CENSUS HOTLINE, TOLL FREE, ON **0800 110 248**

PROCEDURES OF ENUMERATION

Who should be enumerated/counted on this questionnaire?

- Individuals who will be accommodated in an institution (for example, student residences, boarding schools, frail care centres, hospitals, defence force/army barracks, police cells, prisons, hostels, shelter for the homeless/refugees/other shelters, initiation schools, convents/monasteries, orphanages, homes for the disabled and old age homes - depending on the arrangement) on reference night should be enumerated.
- Include babies born before midnight between 9 - 10 October 2011
- Hotel managers/administration should complete the section on services and the fieldworker to complete the other sections

How to complete the questionnaire

- Read every question carefully
- For questions where a choice of answers is provided, the fieldworker/respondent should write the appropriate codes in the boxes
- Make sure that all the codes are written inside the boxes. For example

Correct Incorrect

- For numeric values such as age, the fieldworker/respondent should write the correct answer in the box as a number (e.g. "007"):

Questionnaire of completed for this institution

If more than 250 persons in the institution, write the barcode of the 1st questionnaire below:

SAMPLE



(H-01) What type of living quarter is this?

- 06 = Hospital/medical facility/clinic
- 07 = Prison/correctional institution/police cells
- 08 = Defense force barracks
- 09 = Frail care centres
- 10 = Refugee camp/shelter
- 11 = Convent/monastery
- 12 = Orphanage/home for disabled
- 13 = Hotel (including tourist hotel)
- 14 = Hostel
- 15 = Student residence/boarding school
- 05 = Other

Write the appropriate code in the boxes.

(H-07) In which way does this institution mainly get piped water for use?

- 1 = Piped (tap) water inside the institution
- 2 = Piped (tap) water inside the yard
- 3 = Piped (tap) water on community stand: distance less than 200m from institution
- 4 = Piped (tap) water on community stand: distance between 200m and 500m from institution
- 5 = Piped (tap) water on community stand: distance between 500m and 1000m (1 km) from institution
- 6 = Piped (tap) water on community stand: distance greater than 1000m (1 km) from institution
- 7 = No access to piped water

Write the appropriate code in the box.

(H-08) What is this institution's MAIN source of WATER for domestic use?

- 1 = Regional/local water scheme (operated by municipality or other water services provider)
- 2 = Borehole
- 3 = Spring
- 4 = Rain water tank
- 5 = Dam / pool / stagnant water
- 6 = River / stream
- 7 = Water vendor
- 8 = Water tanker
- 9 = Other

Write the appropriate code in the box.

(H-10) What is the MAIN type of TOILET facility used by this institution?

- 1 = Flush toilet (connected to sewerage system)
- 2 = Flush toilet (with septic tank)
- 3 = Chemical toilet
- 4 = Pit toilet with ventilation (VIP)
- 5 = Pit toilet without ventilation
- 6 = Bucket toilet
- 7 = Other
- 0 = None

Write the appropriate code in the box.

(H-11) What type of energy/fuel does this institution MAINLY use for cooking, heating and lighting?

- 1 = Electricity
- 2 = Gas
- 3 = Paraffin
- 4 = Wood
- 5 = Coal
- 6 = Candles
- 7 = Animal dung
- 8 = Solar
- 9 = Other
- 0 = None

COOKING

HEATING

LIGHTING

Write the appropriate code in the box.

Note

- Wood (4), coal (5) and animal dung (7) cannot be used for lighting
- Candles (6) cannot be used for heating or cooking

(H-12) How is the refuse or rubbish from this institution MAINLY disposed of?

- 1 = Removed by local authority/private company at least once a week
- 2 = Removed by local authority/private company less often
- 3 = Communal refuse dump
- 4 = Own refuse dump
- 5 = No rubbish disposal
- 6 = Other

Write the appropriate code in the box.

(H-13) Does this institution own any of the following in working order?

- 1 = Yes
- 2 = No

Television

Radio

Landline telephone

Refrigerator

Internet facilities

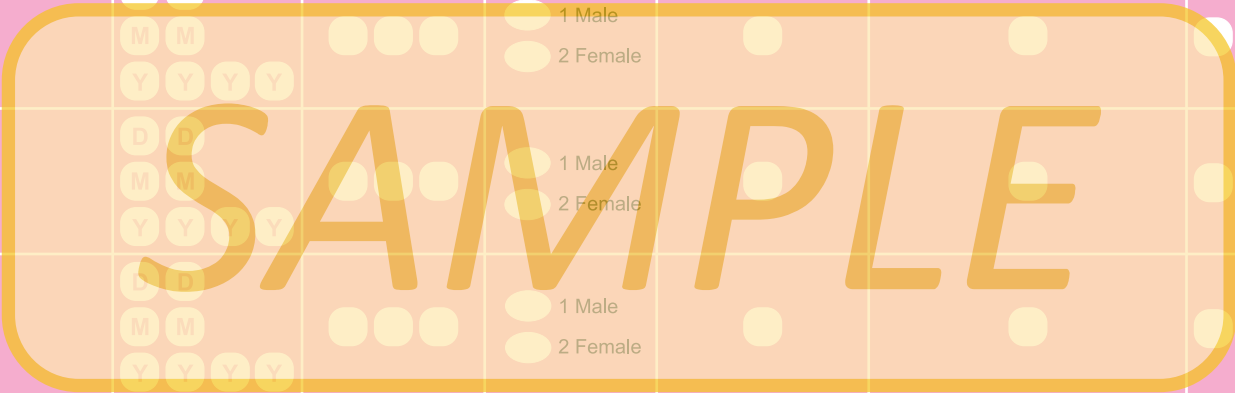
Write the appropriate code in the box.

SAMPLE



LIST OF PERSONS IN THIS INSTITUTION ON CENSUS NIGHT

F-00 Person number	F-01 Name/Name and surname/initials	P-01 Date of birth	F-02 Age in completed years	F-03 Sex	P-05 Population group	P-03 Marital status	Barcode Number
	Example JOHN MALULEKE	Example 1 2 0 3 1 9 8 1	Example 0 2 9	1 = Male 2 = Female Mark the appropriate circle with an X.	1 = Black African 2 = Coloured 3 = Indian or Asian 4 = White 5 = Other Write the appropriate code in the box.	1 = Married 2 = Living together like married partners 3 = Never married 4 = Widower/Widow 5 = Separated 6 = Divorced Write the appropriate code in the box.	Use the corresponding barcode from Questionnaire B if the same person is completed in both
1		D D M M Y Y Y Y		1 Male 2 Female			
2		D D M M Y Y Y Y		1 Male 2 Female			
3		D D M M Y Y Y Y		1 Male 2 Female			
4		D D M M Y Y Y Y		1 Male 2 Female			
5		D D M M Y Y Y Y		1 Male 2 Female			
6		D D M M Y Y Y Y		1 Male 2 Female			
7		D D M M Y Y Y Y		1 Male 2 Female			
8		D D M M Y Y Y Y		1 Male 2 Female			



Census 2011: 9 - 30 October 2011



C 123456789 00

Census 2011: 9 - 30 October 2011



C 123456789 00

Census 2011: 9 - 30 October 2011



C 123456789 00

