




Global Launching of SDG Reporting Platform


**20 September 2017 during
UN General Assembly
(HPM Of Bangladesh)**


**HPM Sheikh Hasina delivering
her speech in UN General
Assembly**




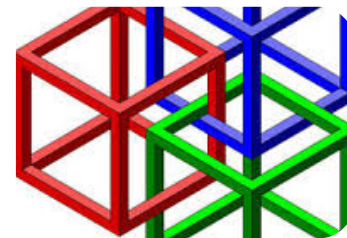
Data Context in Bangladesh

 The image cannot be displayed. Your computer may not have enough memory to open the image, or the image may have been corrupted. Restart your computer, and then open the file again. If the red x still appears, you may have to delete the image and then insert it again.

 The image cannot be displayed. Your computer may not have enough memory to open the image, or the image may have been corrupted. Restart your computer, and then open the file again. If the red x still appears, you may have to delete the image and then insert it again.

 The image cannot be displayed. Your computer may not have enough memory to open the image, or the image may have been corrupted. Restart your computer, and then open the file again. If the red x still appears, you may have to delete the image and then insert it again.

 The image cannot be displayed. Your computer may not have enough memory to open the image, or the image may have been corrupted. Restart your computer, and then open the file again. If the red x still appears, you may have to delete the image and then insert it again.



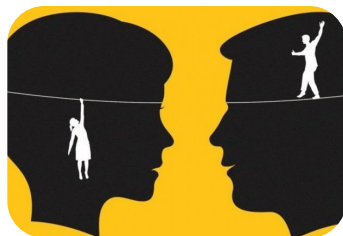
Data availability

Data Quality

Capacity development

Data Visualization

systematic framework for Analytics



Gender disaggregated data



technologies and innovation



Coordination and Stakeholders' Engagement



Data Sharing and Monitoring Mechanism



Integration and Interoperability



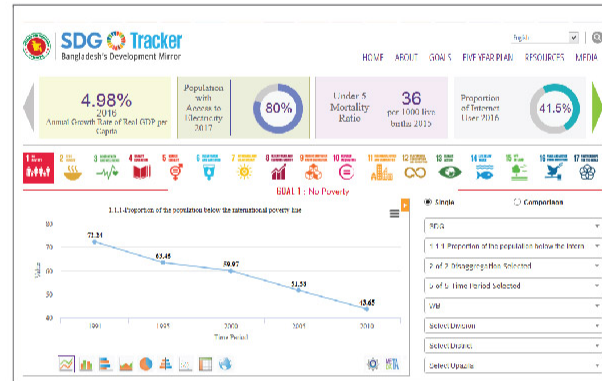
DATA CULTURE



Open data fosters
a culture of creativity,
ingenuity and
innovation.

OPEN GOVERNMENT DATA

Integration of agency silos to create
a universally accessible data platform
for citizens, researchers, private
& public agencies, and policy makers



SDG TRACKER

Track Bangladesh's indicator-wise
SDG achievement progress through
an integrated data platform and
advanced analytics

Bangladesh: Journey From MDG to SDGs

STATUS OF BANGLADESH AGAINST MDG TARGET



1 Eradicate Extreme Poverty and Hunger

Target: 29% of people living below poverty line
Status: **ACHIEVED**
26.2% (2013 est)



2 Achieve Universal Primary Education

Target: Net Enrolment Ratio (NER) 100%
Status: **ON TRACK**
97.3% (2013)



3 Promoting Gender Equity and Empowering Women

Target: Gender parity in primary education 1.0
Status: **ON TRACK**
1.00 (2013)



4 Reduce Child Mortality

Target: Under-five mortality rate 48 (per 1,000 live births)
Status: **ACHIEVED**
44 (2011 est)



5 Improve Maternal Health

Target: Maternal mortality 143 (per 100,000 live births)
Status: **ON TRACK**
194 (2010)



6 Combat HIV/AIDS, Malaria and other Diseases

Target: HIV prevalence halting
Status: **WELL ACHIEVED**
HIV 0.1



7 Ensuring Environmental Sustainability

Target: Forest coverage 20% (TD>70%)
Status: **NEEDS ATTENTION**
13.20% (TD>30%)



8 Developing a Global Partnership for Development

Target: Develop further an open, rule based, predictable, non-discriminatory trading & financial system.
Status: **Needs attention**
Net ODA received US\$2,871m (2013)
Debt Service 8.58%

Challenges

- Limited land for food production
- High population density
- Growing population
- Just 1 in 6 women employed in non-agricultural sector
- Protein and micronutrient deficiencies cause maternal and child malnutrition

Major misses

- Literacy
- Employment
- Environment

Portal - Features and Functionality



Progress Tracked

Target and Indicator focused

Data collected electronically through relevant sources based on coverage of geographical, time and frequency



Indicator Correlation

Supports correlation/comparison among indicators as changes in one indicator affects progress of the other

Disaggregation



Data - age, location, sex, race, religion, ethnic groups for identifying **'Left Behind'** groups and present sectoral goals



Data Visualization & Reporting

Visualises data in multiple tiers and manners (i.e. Bar, Column, Pie, Area, Pyramid, Scatter plot, Line Chart, Table, Map etc.) reflects implementation progress overtime



Constituency Tracker

To Accelerate the Progress of evidence-based development planning and decision making

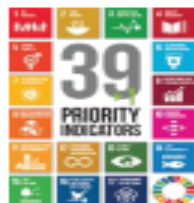


Global Ranking

Analyzes across various Global Indices- represents country rank, frequency of publication, yearly comparison, etc.

Government Manifesto

Synergies indicators across Development Planning agendas & Prioritised contextual SDG indicators



39+1 Priority Indicators:

Effective, Efficient, Timely implementation on country context & localisation of prioritised goals

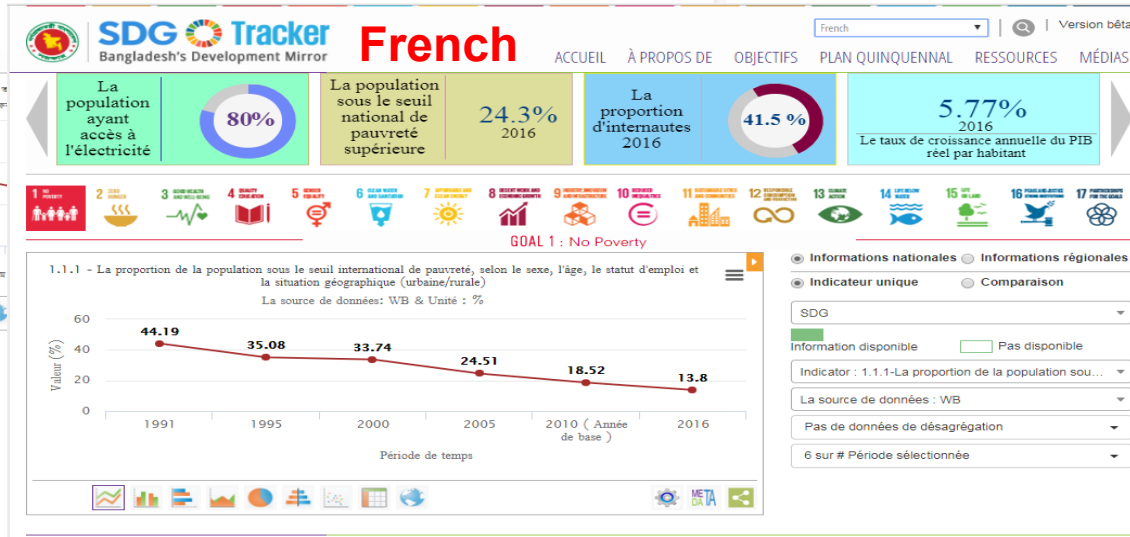
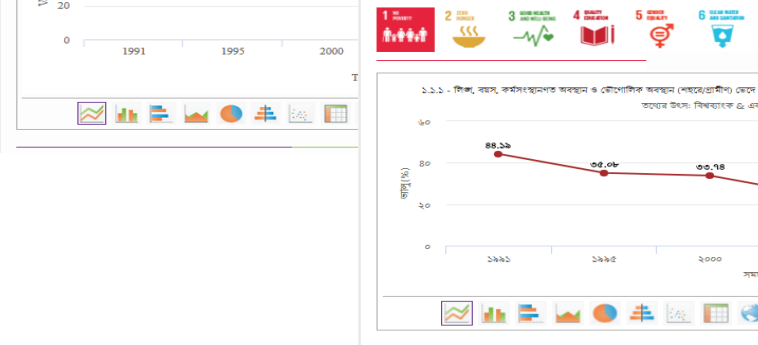


Resources

SDG Reports, MDG Reports, UN Resolutions on SDGs, M&E Framework, UN SDG Reports, SDGs Financial Strategies, Statements, Global SDG Tracking and SDG Tracking etc.



SDG Portal in Multi-language




SDG Tracker Login



SDG Tracker
Bangladesh's Development Mirror

 User Id

 Password

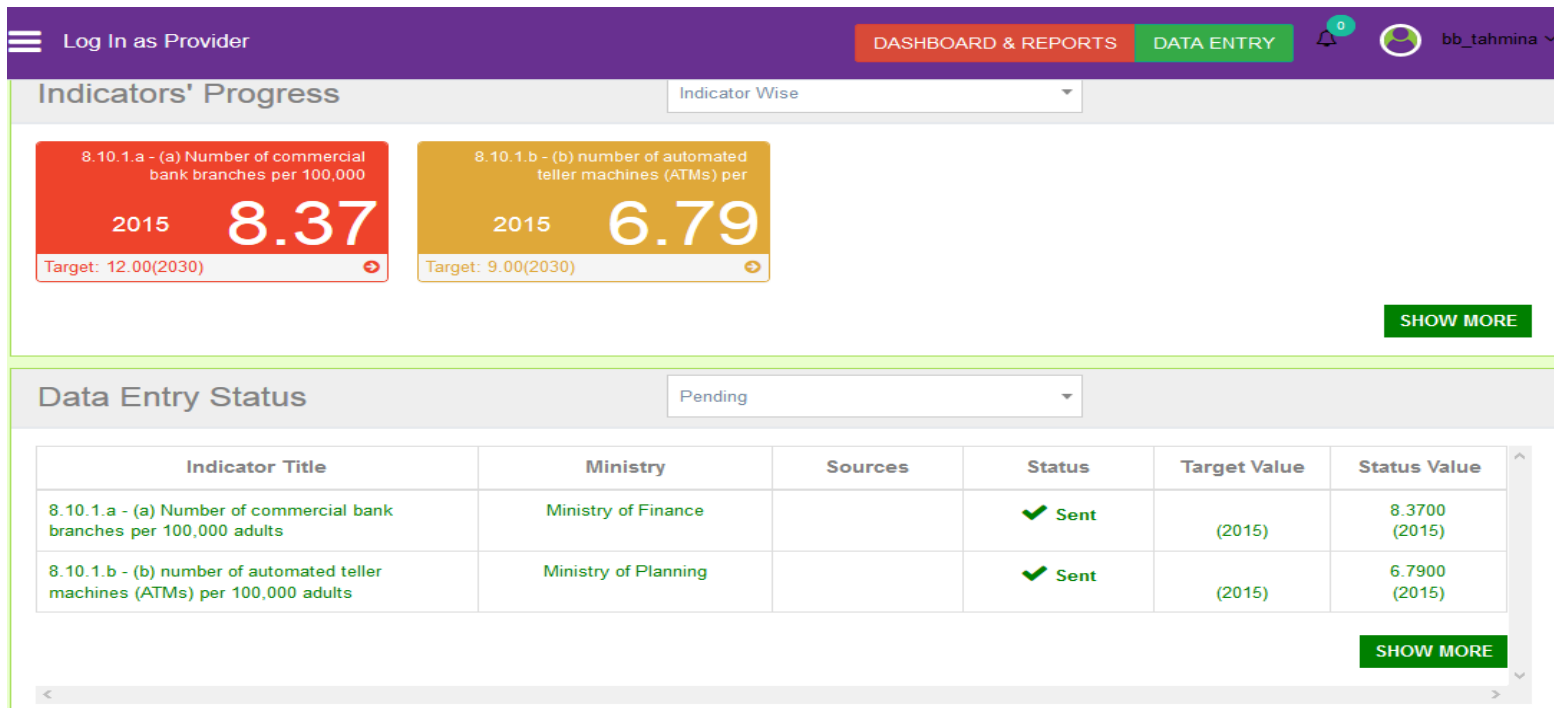
☐ Remember

Sign In

[Forgot Password?](#)

[Need Help?](#)

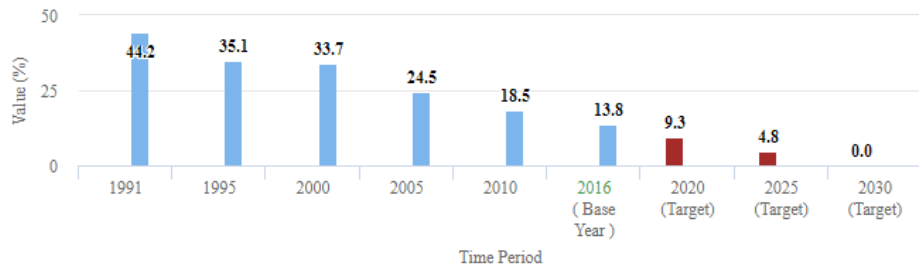
Login



SDG Data visualization

1.1.1 - Proportion of population below the international poverty line, by sex, age, employment status and geographical location (urban/rural)

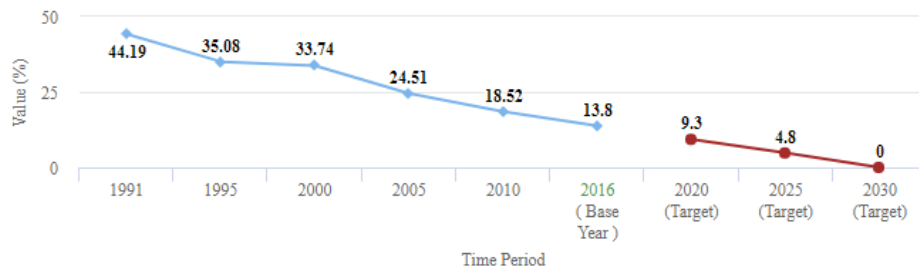
Data Source: SID->BBS & Unit : %



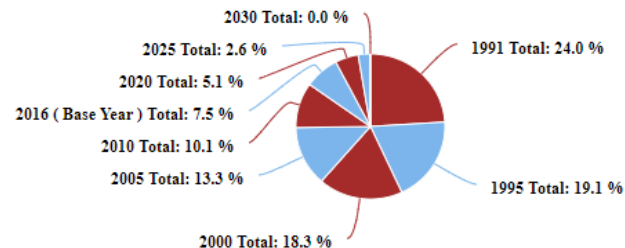
- Multiple visualization options
- Formatting facilities
- Download/save/print/share options

1.1.1 - Proportion of population below the international poverty line, by sex, age, employment status and geographical location (urban/rural)

Data Source: SID->BBS & Unit : %



1.1.1 - Proportion of population below the international poverty line, by sex, age, employment status and geographical location (urban/rural)



Data (Regional) visualization



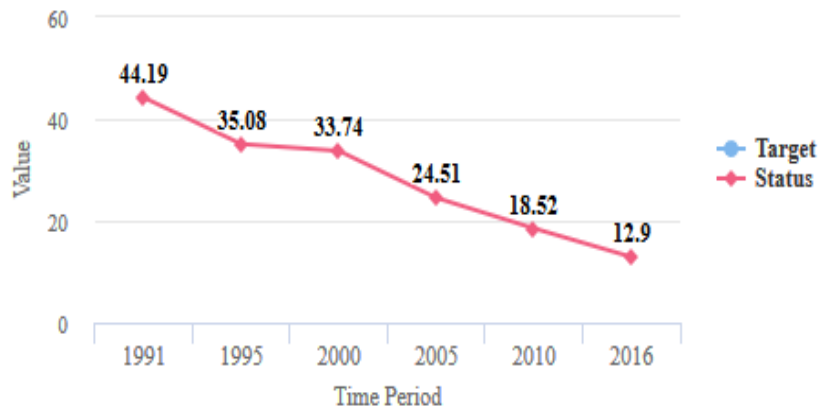
Correlation among indicators



GOAL 1 : No Poverty

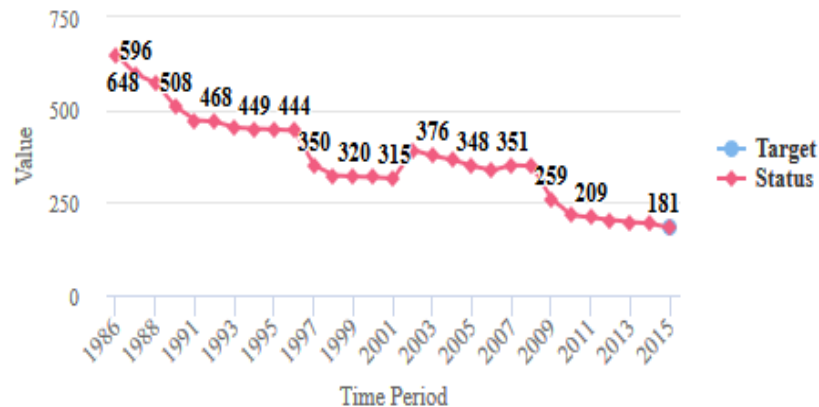
1.1.1 - Proportion of popula..

Time Period wise Target & Status



3.1.1 - Maternal Mortality R..

Time Period wise Target & Status





HELPING GOVERNMENTS AND STAKEHOLDERS MAKE THE SDGS A REALITY

SUSTAINABLE DEVELOPMENT GOAL 1

[More](#)

End poverty in all its forms everywhere

7
Targets

14
Indicators

19
providers

SDG Thematic corner for Data Analytics



Education



Finance



Infrastructure



Health



Agriculture



Transport



Technology



Society



Local-Govt



Environment



Economy



Business



Why Analytics!

Context of Leaving no one behind



Slum Education



Haor Education



Girls Education



CHT Education



Education for Street children

**How to ensure
quality Education
for All!!!**

Data analytics for policy decisions



SDG Tracker
Bangladesh's Development Mirror



LOG IN

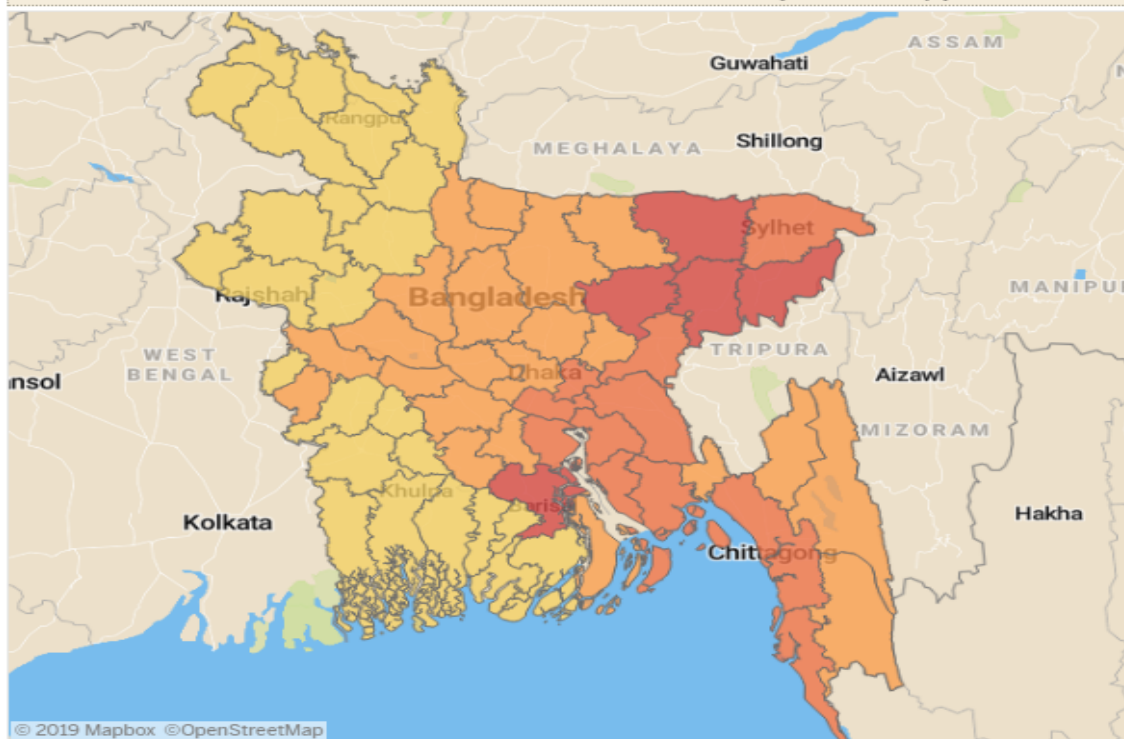
HOME ABOUT GOALS 39+1 INDICATOR RESOURCES CONSTITUENCY DATA OTHERS

for a shy or unprepared student to hide. Conversely, in a

District wise High Ratio of Student & Teacher

District	Division	District I
Habiganj	Sylhet	1
Kishoreganj	Dhaka	2
Sunamganj	Sylhet	3
Barisal	Barisal	4
Maulvibazar	Sylhet	5
Shariatpur	Dhaka	6
Brahamanb...	Chittagong	7
Cox's Bazar	Chittagong	8
Noakhali	Chittagong	9
Narayanganj	Dhaka	10
Chittagong	Chittagong	11
Lakshmipur	Chittagong	12
Sylhet	Sylhet	13
Munshiganj	Dhaka	14
Chandpur	Chittagong	15
Comilla	Chittagong	16
Manikganj	Dhaka	17
Khagrachha..	Chittagong	18
Bandarban	Chittagong	19
Rangamati	Chittagong	20
Madaripur	Dhaka	21
Netrakona	Mymensingh	22
Feni	Chittagong	23

District wise Student Teacher Ratio (Heat Map)



Color Scale

20.00 80.00

Filter Division

(All)

Filter District

(All)

Filter MPO

(All)

Filter Area

(All)

Filter Student Type

(All)

Filter Education L...

(All)

Filter Institution ...

(All)

Filter Geogrpyp

(All)

Data Analytics on Financial Inclusion



User of financial services: district wise

Year

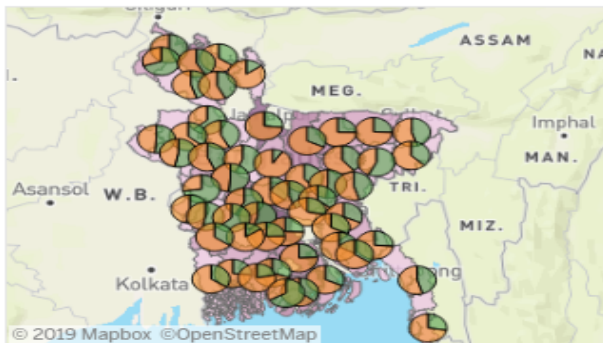
2017

National percentage

Mobile money user

Registered

District wise: 2017



% of peop... 25% 95%

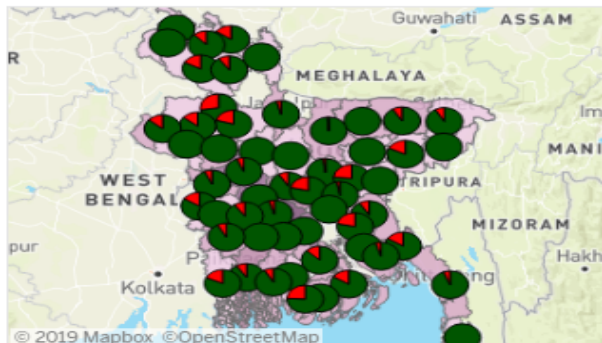
Registere... ■ Registered ■ Not registered

National percentage

Bank account user

Registered

District wise: 2017



% of peop... 5% 70%

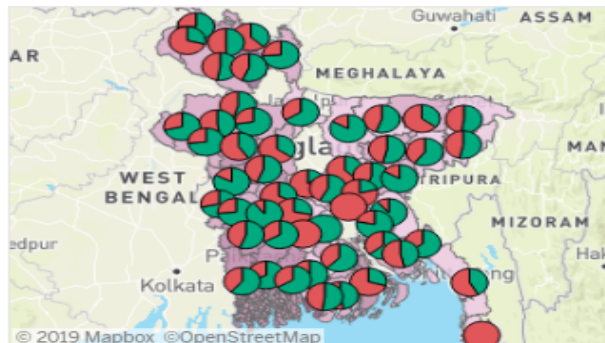
Registere... ■ Registered ■ Not registered

National percentage

Non-bank financial account user

Registered

District wise: 2017



% of peop... 4% 57%

Registere... ■ Registered ■ Not registered

Manifesto in alignment with SDGs



MANIFESTO



Manifesto To SDG



SDG To Manifesto

Manifesto

Special Commitment

Resource section

RESOURCES



M&E FRAMEWORK

The Monitoring and Evaluation Framework has been developed based...

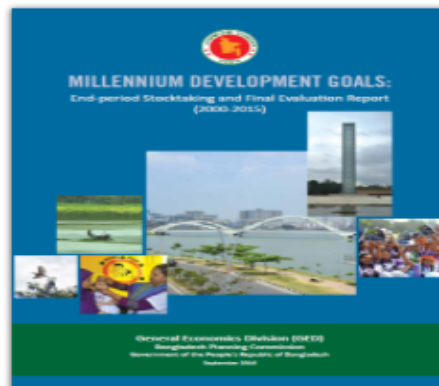
MORE



SDG PROGRESS RE...

Sustainable Development Goals: Bangladesh Progress Report 2018

MORE



MDG REPORT

Millennium development goals: End-period Stocktaking and Final Ev...

MORE



SDG DATA GAP AN...

Data Gap Analysis for Sustainable Development Goals (SDGs) Bang...

MORE

Knowledge Transfer through South-South Cooperation



MoU with Peru



Collaboration with Bhutan

- Collaboration with states/countries
- Sharing knowledge and finding scopes
- Bringing innovation through South-South Network

What should be a Development Mirror looks like?

How we are thinking

Leverage ICTs to go faster in achieving SDGs!

Track who are far behind!

Engage whole of the society!

Localize SDGs!

New sources and intervention for tracking SDGs

Applying whole of the society approach: Engaging academicians



University of Rajshahi

- Shahjalal University of Science & Technology
- Metropolitan University

Engaging whole of the Government

1. Disaggregated data at district and sub district level.

2. Further censuses based on No one leave behind thematic areas

4. Regular data update

5. Training for Data Providers



39+1 INDICATORS

Prioritized Indicators of SDGs for Bangladesh

Priority Indicators



Goal : 1 End poverty in all its forms everywhere

- 1.1.1-Reduce the proportion of population living below extreme poverty line below 3%
- 1.2.1-Reduce the proportion of population living below national poverty line below 10%



Goal : 2 End hunger, achieve food security and improved nutrition and promote sustainable agriculture

- 2.1.1-Reduce the prevalence of stunting in children under 5 years of age to 12%
- 2.2.1-Ensure the proportion of cultivable land at a minimum of 55% of the total land



Goal : 3 Ensure healthy lives and promote well-being for all at all ages

- 3.1.1-Reduce neonatal mortality rate to 12 per 1,000 live births
- 3.2.1-Reduce under-5 mortality rate to 25 per 1,000 live births
- 3.3.1-Reduce the maternal mortality ratio to 70 per 100,000 live births
- 3.4.1-Reduce death rate due to road traffic injuries to 12 per 100,000 people

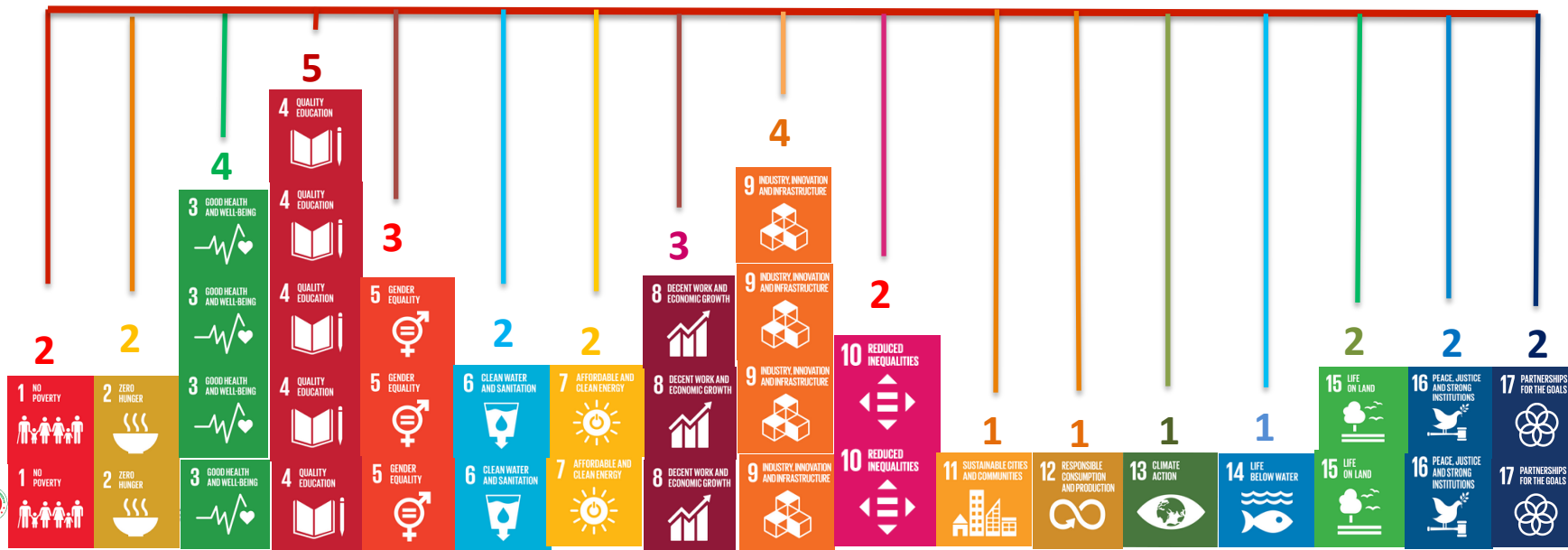


Localization of SDGs: “39+ 1 National Priority Indicators”

Connected with 159 SDG targets



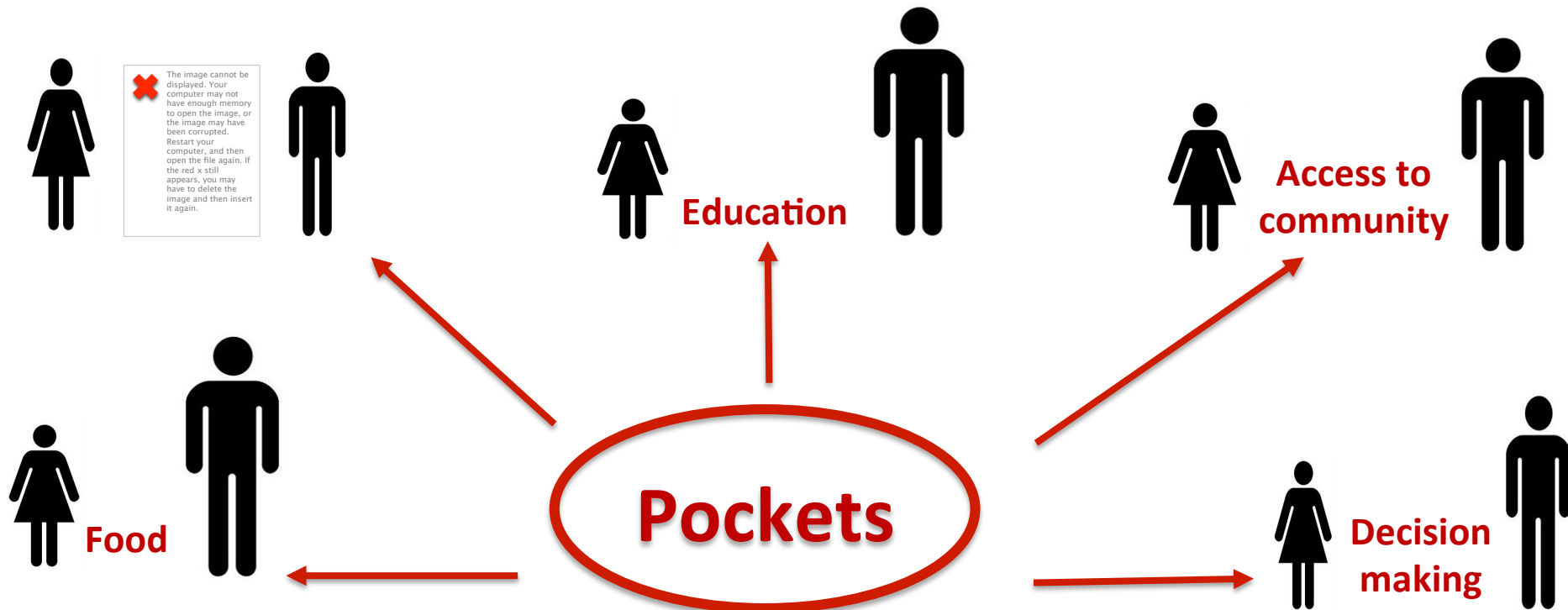
39 Priority Indicators



Constituency wise development Monitoring

The image cannot be displayed. Your computer may not have enough memory to open the image, or the image may have been corrupted. Restart your computer, and then open the file again. If the red x still appears, you may have to delete the image and then insert it again.

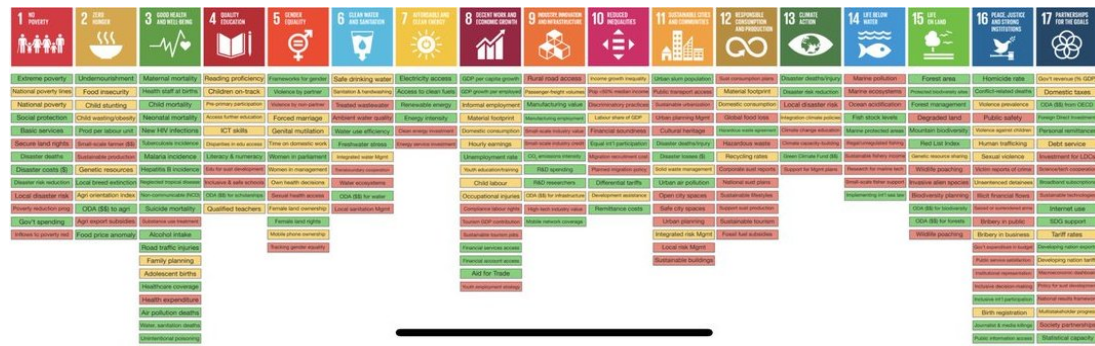
Gender Lense



Impact on Gender in Bangladesh: Gender Data Analytics



232 SDG Indicators



5 Data sets for each of 232 into OFD portal

Opportunity to Minimize the Gender Gap

More than **1160** unique Data sets

Data Analytics to minimize Gender Gap : **HOW??**



1160 Open Data sets open path



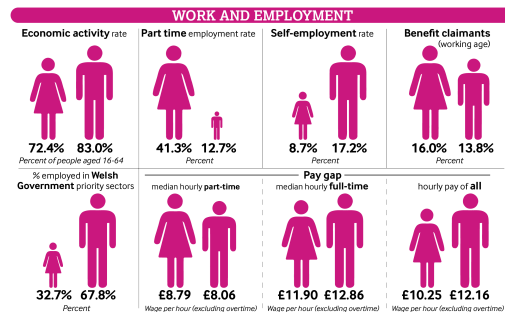
Gender Data Capacity



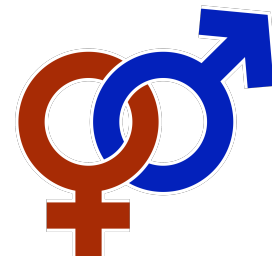
Resource allocation



Gender Data Analytics



Gender Impact



Potential Thematic Areas for Analytics



OWG2

Poverty eradication



OWG3

Food Security and Nutrition /
Sustainable Agriculture



OWG3

Desertification, land
degradation and drought



OWG3

Water and Sanitation



OWG4

Employment, decent work
and social protection



OWG4

Youth, education and culture



OWG4

Health and population
dynamics



OWG5

Sustained and inclusive
economic growth



OWG5

Macroeconomic policy
questions



OWG5

Energy



OWG5

Sustainable Development
Financing



OWG6

Means of implementation

