

Implementing and reporting on the SDGs: a country perspective

Denise Kronemberger

Head of Institutional Relations

Brazilian Institute of Geography and Statistics (IBGE)



The poster is for a virtual meeting organized by the United Nations Statistical Commission. It features a circular logo on the left with the text 'United Nations Statistical Commission 55th Session' and 'ECONOMY • ENVIRONMENT • POPULATION • SOCIETY • TRADE'. The main text on the right reads: 'UNSC55 Side Event & Open IAEG-SDGs Virtual Meeting', 'INSIGHTS FROM SDG MONITORING: LESSONS LEARNED, LINKAGES WITH WELL-BEING DISCUSSION, AND 2025 COMPREHENSIVE REVIEW', '8 February 2024', '8:00 am - 9:30 am EST', and 'Virtual'. A QR code is located in the bottom right corner. At the bottom, there are social media links: 'unstats.un.org | @UNStats | #UN55SC' and the United Nations logo with the text 'Department of Economic and Social Affairs'.

United Nations
Statistical Commission
55th Session
ECONOMY • ENVIRONMENT • POPULATION • SOCIETY • TRADE

UNSC55 Side Event &
Open IAEG-SDGs Virtual Meeting

INSIGHTS FROM SDG MONITORING:
LESSONS LEARNED, LINKAGES WITH
WELL-BEING DISCUSSION, AND 2025
COMPREHENSIVE REVIEW

8 February 2024
8:00 am - 9:30 am EST
Virtual

For more information and to register, please go to
<https://unstats.un.org/sdgs/meetings/iaeg.sdg.side.event.UNSC55/>
or scan the QR code.

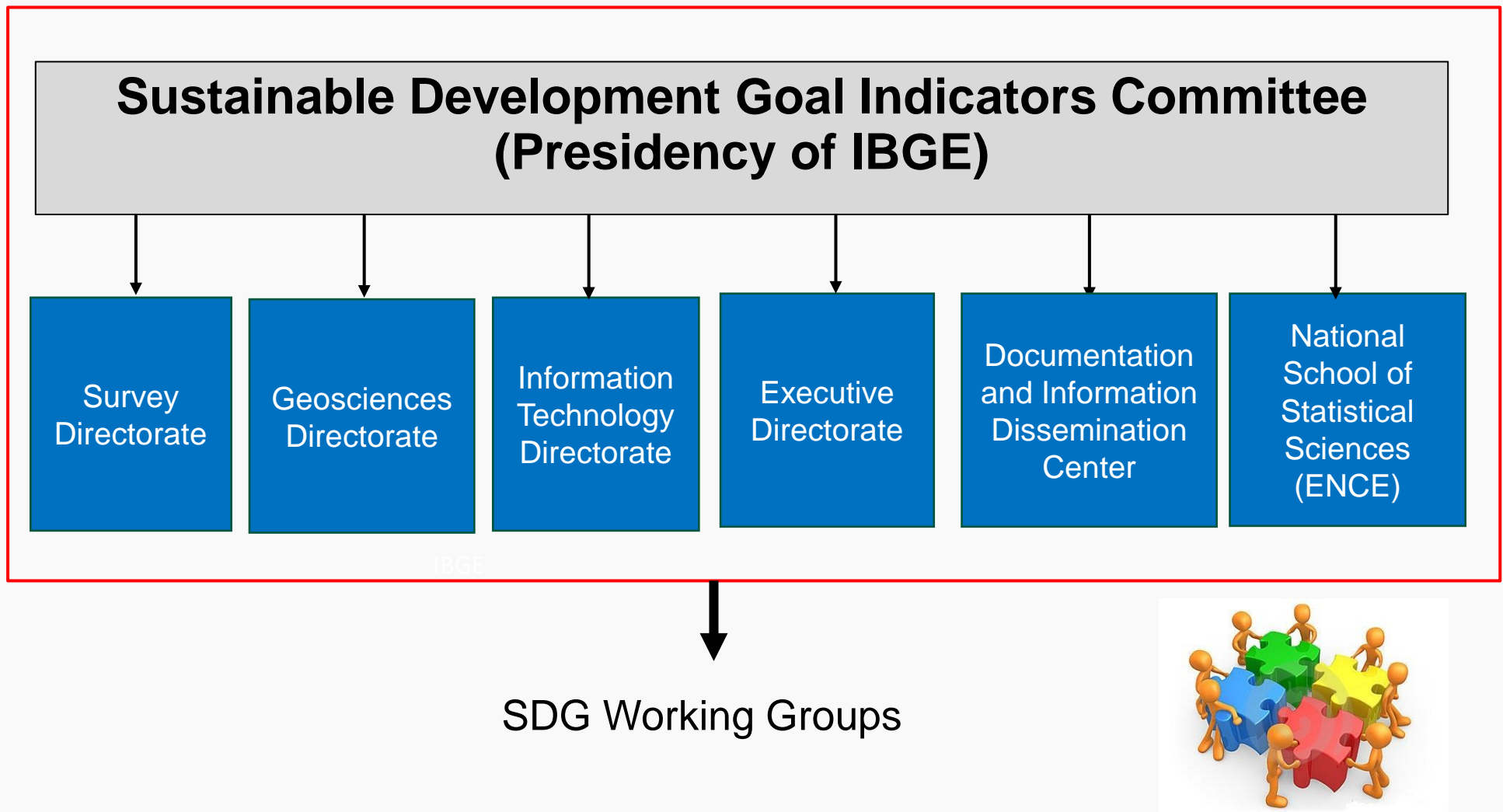
unstats.un.org | @UNStats | #UN55SC

United Nations
Department of Economic and Social Affairs

What are the Brazilian coordination mechanisms to produce SDG Indicators?

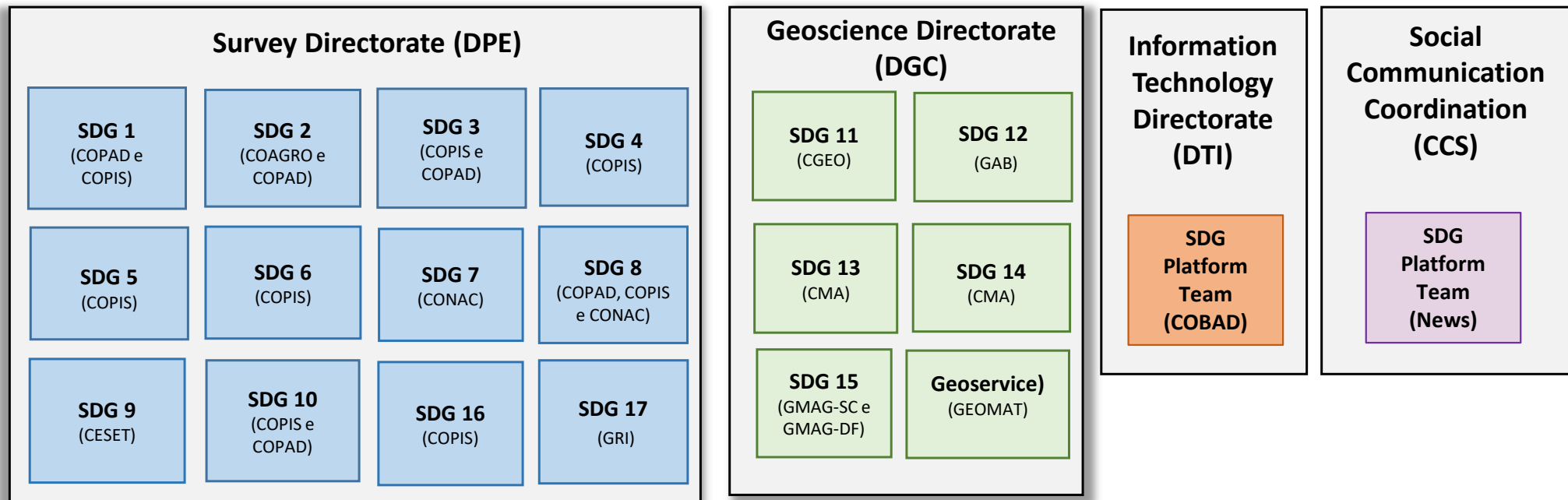
SDG Committee

Governance Body in the Brazilian Institute of Geography and Statistics (IBGE) responsible for coordinating the process of SDG indicators (R.CD nº 6, 06/04/2023).



17 SDG Working Groups + 3 Supporting Teams in IBGE

SDG Working Groups



67 people involved partially at IBGE (SDG coordinators, collaborative people, members of the Committee).

SDG Working Groups: some examples

SDG 3 Working Group



Brazilian Institute of Geography and Statistics (IBGE)

Ministry of Health (MS)

ANVISA

FIOCRUZ

SDG 6 Working Group



Brazilian Institute of Geography and Statistics (IBGE)

National Water and Sanitation Agency (ANA)

Interinstitutional Collaboration

26 collaborative entities (National Public Administration) and 65 public employees.

SDG 13 Working Group



Brazilian Institute of Geography and Statistics (IBGE)

Ministry of Science, Technology and Innovation (MCTI)

National Secretariat of Civil Protection and Defense (MDR)

Brazilian SDG Platform

<https://odsbrasil.gov.br>

OBJETIVOS DE DESENVOLVIMENTO SUSTENTÁVEL


Indicadores Brasileiros para os Objetivos de Desenvolvimento Sustentável
Instituto Brasileiro de Geografia e Estatística

Agenda 2030 Notícias Eventos

O que você procura?


1 ERRADICAÇÃO DA POBREZA	2 FOME ZERO E AGRICULTURA SUSTENTÁVEL	3 SAÚDE E BEM-ESTAR	4 EDUCAÇÃO DE QUALIDADE	5 IGUALDADE DE GÊNERO	6 ÁGUA POTÁVEL E SANEAMENTO	7 ENERGIA LIMPA E ACESSÍVEL	8 TRABALHO DECENTE E CRESCIMENTO ECONÔMICO	9 INDÚSTRIA, INOVAÇÃO E INFRAESTRUTURA
10 REDUÇÃO DAS DESIGUALDADES	11 CIDADES E COMUNIDADES SUSTENTÁVEIS	12 CONSUMO E PRODUÇÃO RESPONSÁVEIS	13 AÇÃO CONTRA A MUDANÇA GLOBAL DO CLIMA	14 VIDA NA ÁGUA	15 VIDA TERRESTRE	16 PAZ, JUSTIÇA E INSTITUIÇÕES EFICAZES	17 PARCERIAS E MEIOS DE IMPLEMENTAÇÃO	QUADRO GERAL DOS INDICADORES

Notícias




NOVA PUBLICAÇÃO CONECTA REFEIÇÕES ESCOLARES, NUTRIÇÃO E SISTEMAS ALIMENTARES

O documento indica duas áreas principais em seus programas de alimentação




COM QUEDA DE 35% DESDE 2010, BRASIL É UM DOS LÍDERES MUNDIAIS NA REDUÇÃO DO CONSUMO DE TABACO

O consumo de tabaco está diminuindo em 150 países, apesar dos esforços da



COMISSÃO NACIONAL DOS ODS AVANÇA NA TERRITORIALIZAÇÃO DE POLÍTICAS PÚBLICAS EM COMUNIDADES TRADICIONAIS

A Subcomissão de Povos e Comunidades Tradicionais para a Agenda 2030 foi lançada no último dia 20, durante a posse dos 84 representantes da governança da

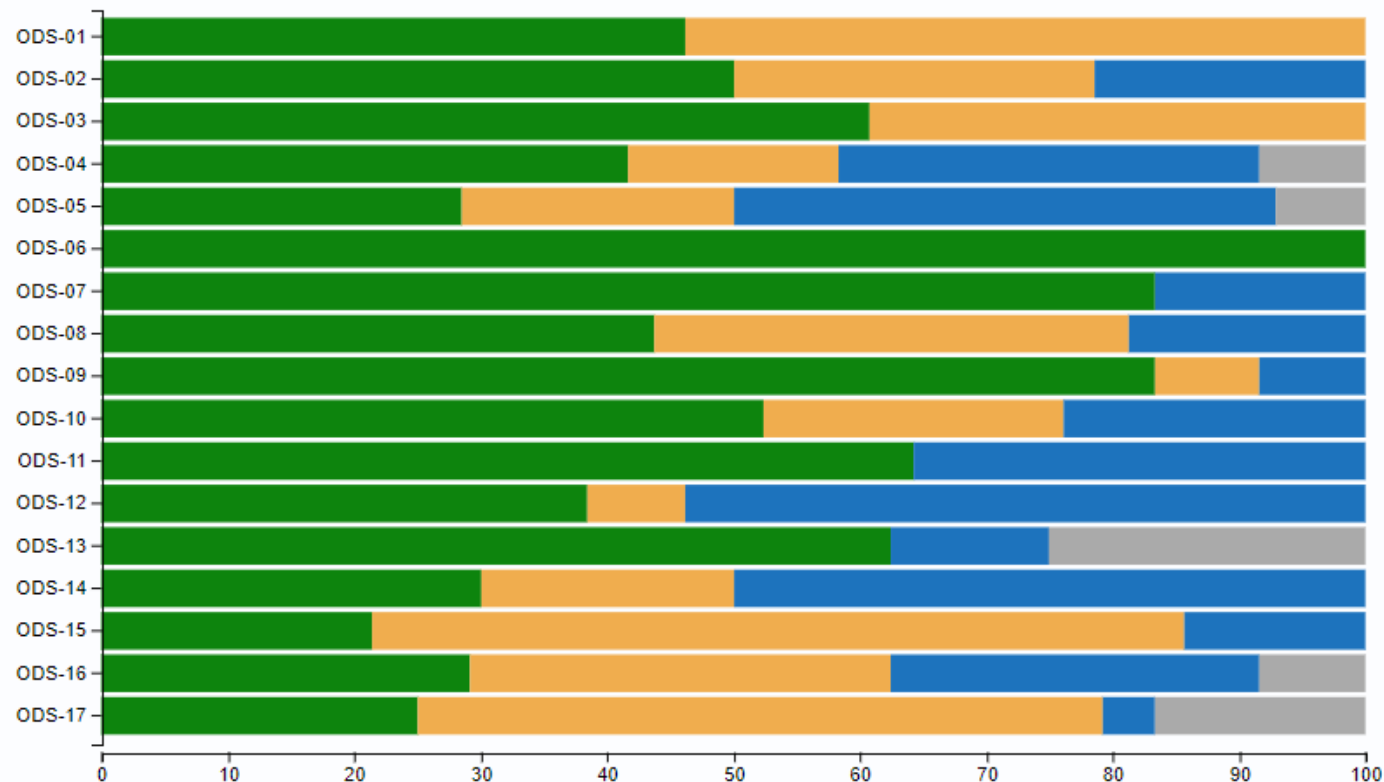


PROJETO DO MCTI QUER REDUZIR USO DE DESCARTÁVEIS PLÁSTICOS NO TURISMO

plasticos, como copos, pratos e talheres descartáveis, em áreas de turismo.

SDG Global Indicators - Brazil

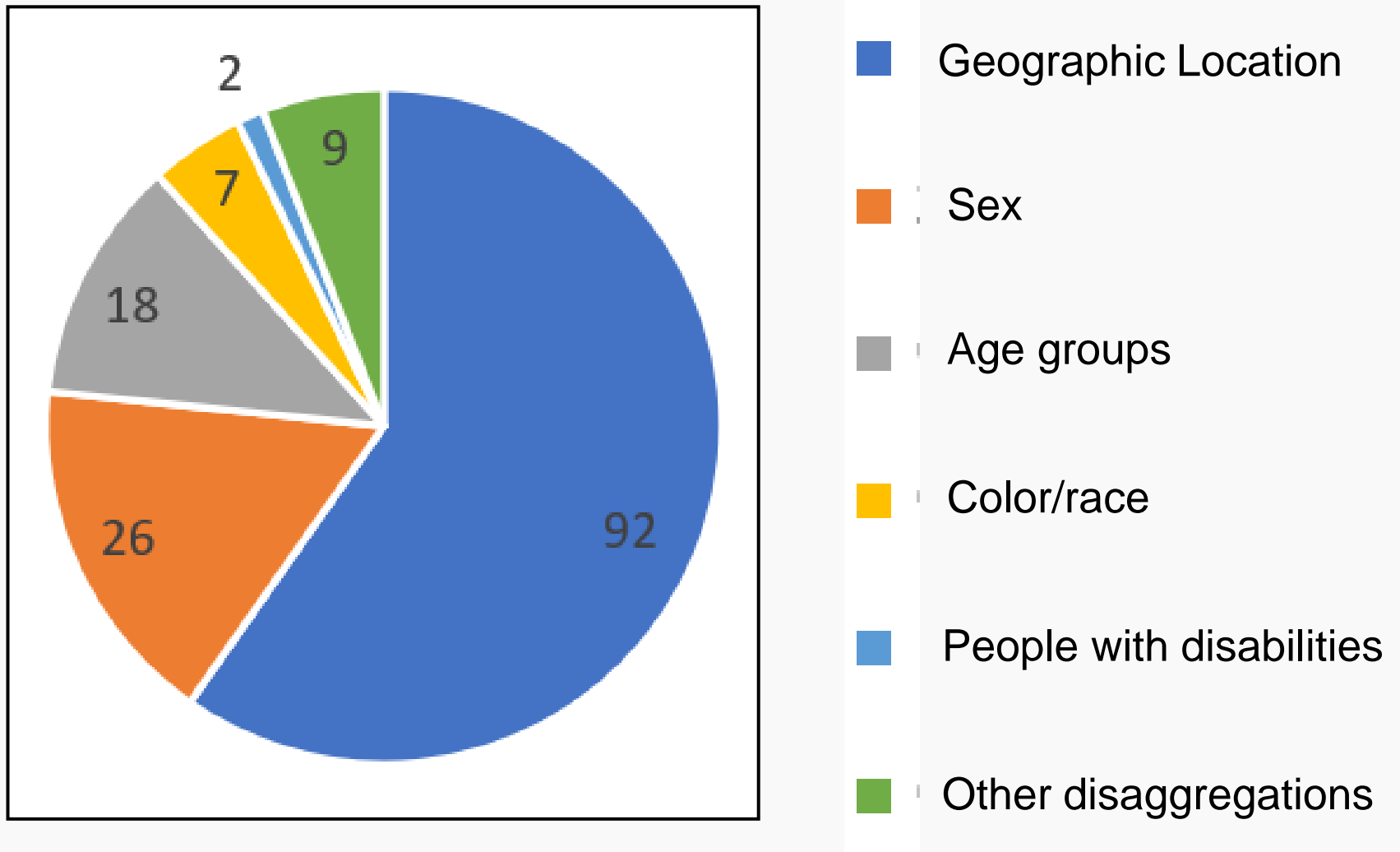
122 Produced
 71 In Analysis/ Production
 51 Without Data
 10 Not Applicable to Brazil



Data Sources: 9 IBGE Surveys (72 indicators), 13 Administrative Data (62 indicators) and Monitoring data (3 indicators).

Leaving no one behind (LNOB)

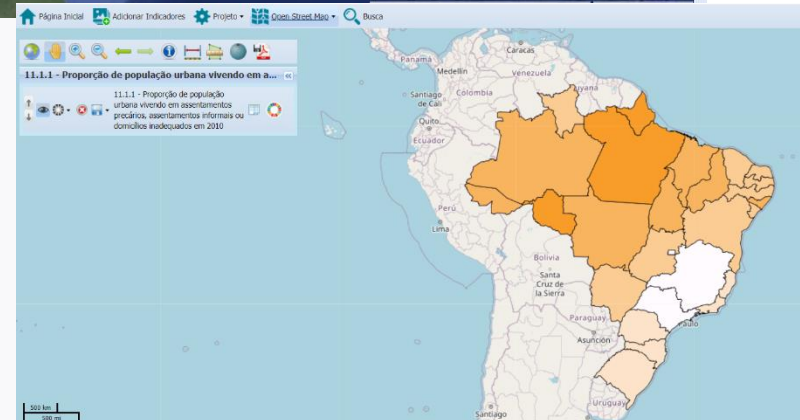
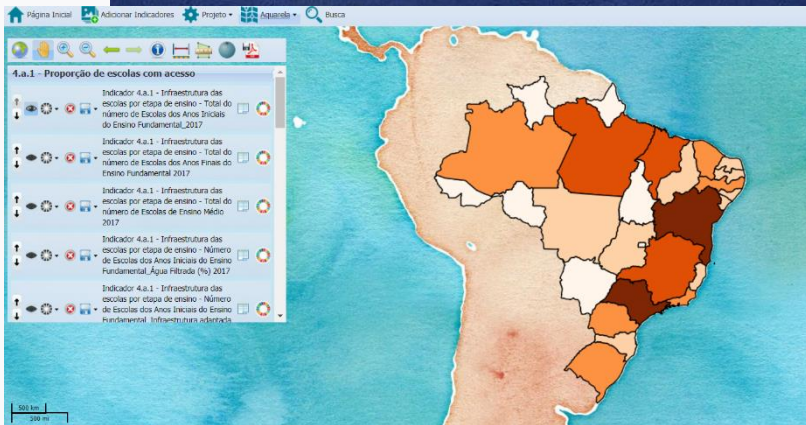
SDG Data Disaggregation – Brazil (jul, 2023)



1	Goal X
2	Target X.X
3	Name of indicator
4	Concepts and definitions
5	Calculation formula
6	Unit of measurement
7	Variables, sources and institutions
8	Geographical scope
9	Disaggregation
10	Target population
11	Periodicity
12	Temporal series
13	Related Indicators
14	Access to indicator
15	Producer institution
16	Contact
17	References

Standardized Methodological Sheet for SDG Indicators

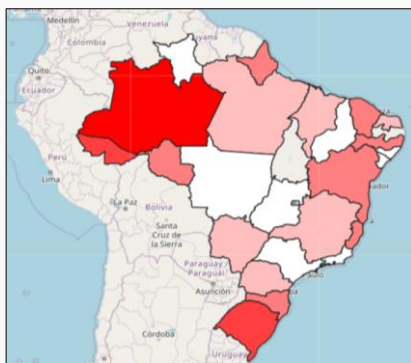
Interactive Geographic Platform (IGP)



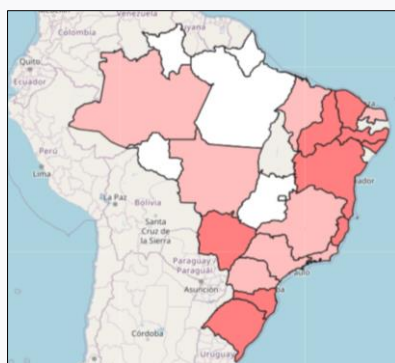
The evolution of SDG indicators presented on maps

SDG Indicator 11.5.1. Number of deaths, missing persons and directly affected persons attributed to disasters per 100,000 population

2015



2016



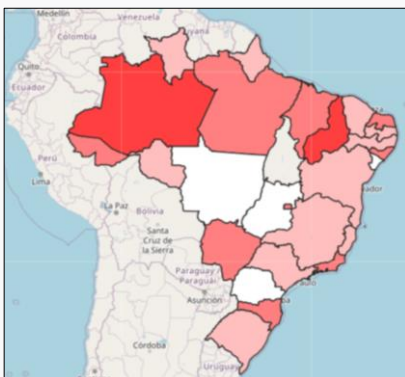
2017



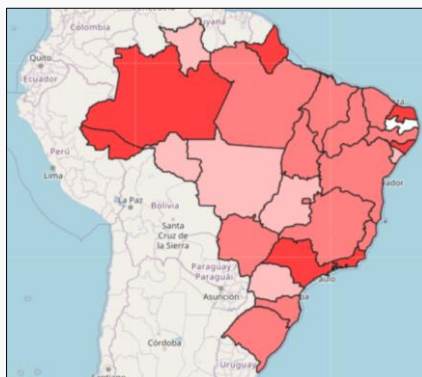
2018



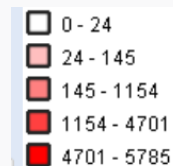
2019



2020



2021



Filling Data Gaps

- ❑ Adding questions to existing surveys to produce some indicators
 - Indicator 12.6.1: question on the existence of sustainability report in companies – PINTEC survey/IBGE.
 - Indicator 16.1.3: National Health Survey/IBGE.
 - Indicator 16.3.1: inclusion of the theft and robbery module in the Continuous National Household Sample Survey (PNADC/IBGE).
 - Indicator 16.1.4: inclusion of the sense of security module in the the Continuous National Household Sample Survey (PNADC/IBGE).
 - Indicators 5.2.1, 5.2.2, 5.3.1, 5.6.1: National Demographic and Health Survey – PNDS/IBGE (data collection started in October, 2023).
- ❑ Continuous National Household Sample Survey included a specific module for **people with disabilities**.
- ❑ 2022 Demographic Census: including data on the **indigenous people** and “**quilombola**”.

National Commission for the SDGs (Decree nº 11.704/2023)



- ❑ **Brazilian Institute of Geography and Statistics (IBGE)**, Institute of Applied Economic Research (IPEA) and Oswaldo Cruz Foundation (FIOCRUZ) are technical advisory bodies.

- ❑ IBGE activities at National Commission:
 - ✓ Participation in ordinary meetings.
 - ✓ Participation in Subcommittees (Governance, SDG 18, Indigenous People, etc.).
 - ✓ Preparation of the Voluntary National Report (VNR 2024).

SDG 18 - Achieving Racial Equality in Brazilian Society

Subcommittee SDG 18: there are 28 Brazilian institutions (government and civil society), including the Brazilian Institute of Geography and Statistics (IBGE).



Source of photo: <https://www.gov.br/secretariageral/pt-br/noticias/2021/agosto/governo-convo-ca-a-201cv-conferencia-nacional-de-promocao-da-igualdade-racial201d>

Lessons Learned and Recommendations

- Leadership of NSO.
- Mobilize and engage organizations to take part in SDG working groups, produce indicators, follow up and work towards SDGs dissemination and implementation.
- Cooperation between NSO and other national data producers.
- Governance structure (NSO and other national data producers).
- Infrastructure (Ex. Create SDG Platform).
- Integration of statistics with geospatial information.
- Existence of metadata for indicators.
- Capacity building at all levels.
- Different ways of communication for diverse audiences.

Thanks for your attention!

denise.kronemberger@ibge.gov.br

