

Lightning Talk – UNEP-WCMC work on Nature Metrics, Indicators, and Online Tools

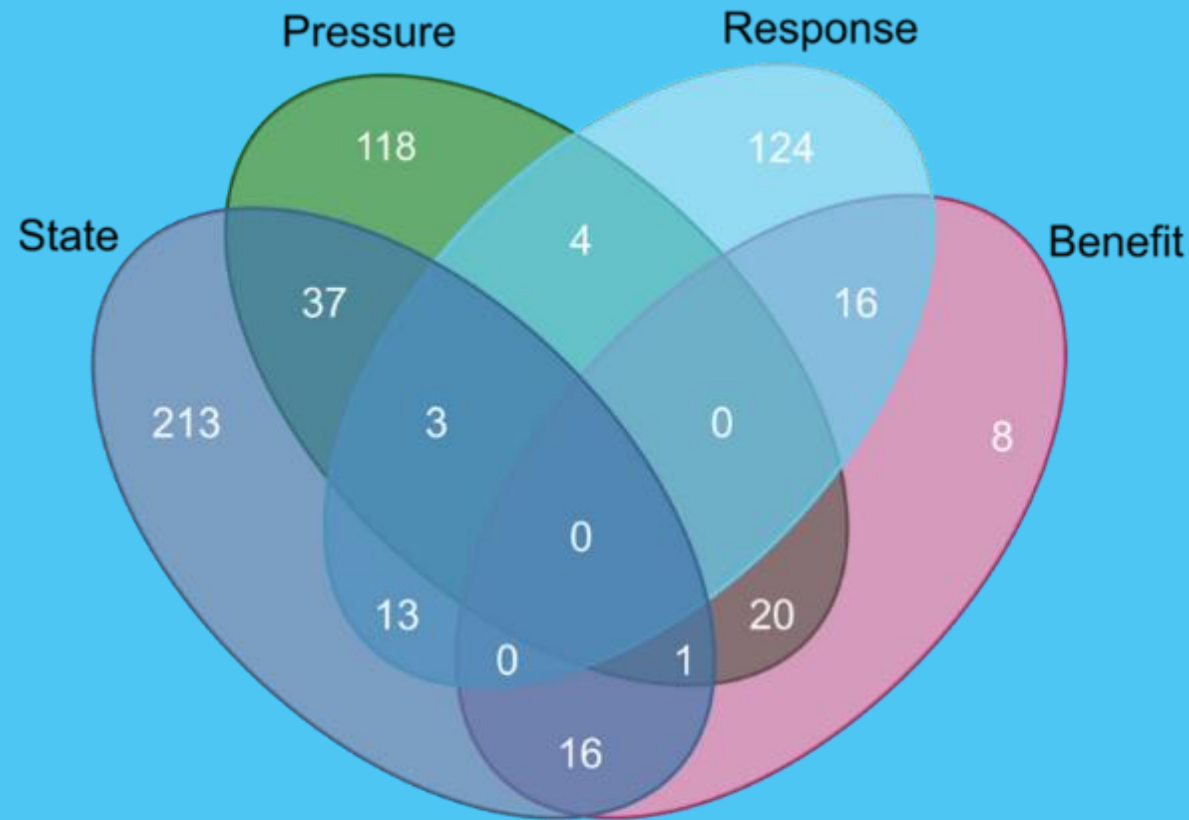
Neil Burgess, Chief Scientist, UNEP-WCMC

Making metrics data available = 573 metrics .

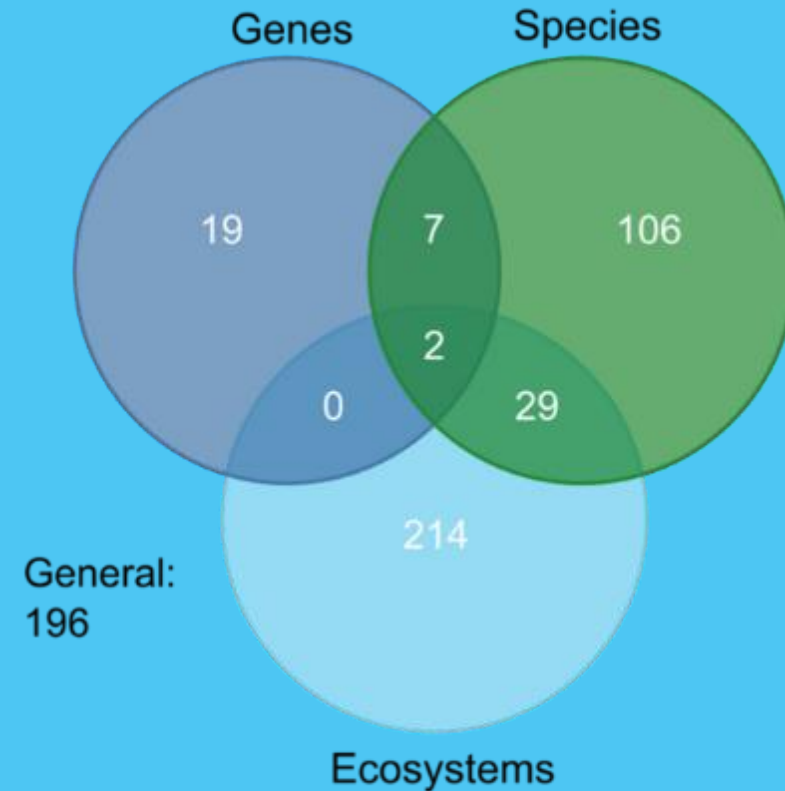
Metric	Responsible Institution	Time series (e.g. 1985-2019)	Frequency of update (e.g. annually, monthly)	Static (S) or Temporal (T) Data Layer, or Not Available /Applicable (N/A)	Pressure (P), State(S), Response (R), Benefit (B)	Genes (G), Species (S), Ecosystems, General	Top-down (T), Bottom-up (B), Neither (0), Unknown (U) [State metrics only]	Significance (S), Intactness (I), Neither (0), Unknown (U) [State metrics only]	Business Use	Global indicator can be disaggregated for national use (Y/N)	National data aggregated to form global indicator (Y/N)	National Methodology Available (Y/N)	SDG indicator (Y/N)	CBD GBF indicator (headline, component, complementary)	Indicator used to measure other MEAs or processes (e.g. Ramsar, IPBES, CMS)	Disaggregated by sex or gender-specific	Citation	Resource 1	Resource 2
Biodiversity Hotspots Revisited		2016		S	S	S,E	T	S	N					N			Michael Hoffman, Kellee Koenig, Gill Bunting, Jennifer Costanza, & Williams, Kristen J. (2016)	https://zenodo.org/record/3261807#.YIfV-yjMKUk	
Biodiversity Impact Metric (BIM)	Cambridge Institute for	-	-	S	S	S,E	T	S,I	Y	N	N	N	N	N	N	N	University of Cambridge	https://www.cisl.ca	https://www.cisl.ca
Biodiversity Indicator and Reporting System (BIRS) Index	IUCN	-	-	S	S	GENERAL	B	S,I	Y					N			IUCN (2014). Biodiversity	https://portals.iucn.org/library/	
Biodiversity Intactness Index	Natural History Museum (UK)	1900-2010 (global) 2000-2014 (tropical forest)	1900-2010 (global) 2000-2014	T	S	S	T	I	Y	Y	N	Y	N	Complementary	IPBES	N	Newbold, T. et al. (2016) 'Has land use pushed terrestrial biodiversity beyond the planetary boundary? A Newbold, T., Hudson, L.N., Arnell, A.P., Contu, S., Palma, A.D., Ferrier, S., Hill, S.L.L., Hoskins, A.J.	https://www.science.org/doi/full/10.1016/j.science.2016.05.011	https://www.science.org/doi/full/10.1016/j.science.2016.05.011
Biodiversity Intactness Index Change 2000-2015	UNEP-WCMC, University College London, Natural History Museum, Imperial College	2000 - 2015	v1	T	S	S,E	T	I	Y					N			Newbold, T., Hudson, L.N., Arnell, A.P., Contu, S., Palma, A.D., Ferrier, S., Hill, S.L.L., Hoskins, A.J.		
Biodiversity Metric 4.0	Natural England & UK	-	-	S	S	S,E	B	I	Y					N			Natural England and other	https://nepubprod.app	http://nepubprod.app
Biodiversity Performance Index (BPI)	Center for Sustainable	-	-	S	S	S,E	T	I	Y					N			McElroy, M.W. and A. V	https://www.researchgate.net/	
Biofuels Development Potential Index		2019		S	P	GENERAL			Y?					N			Oakleaf, James; M. Kennedy; Christina; Baruch-Mordo, Sharon; Gerber, James; C. West; Paul; Johnson	https://doi.org/10.6084/m9.figshare.c.4249532.v2	
Biomass Carbon Stock of Global																	Xia, J. et al. Spatio-Temporal Patterns and		

How many Terrestrial Metrics = 573

a)



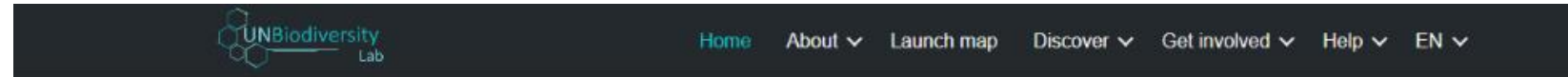
b)



Paper available here

[Global Metrics for Terrestrial Biodiversity | Annual Reviews](#)

Making Spatial Data Available : UN Biodiversity Lab



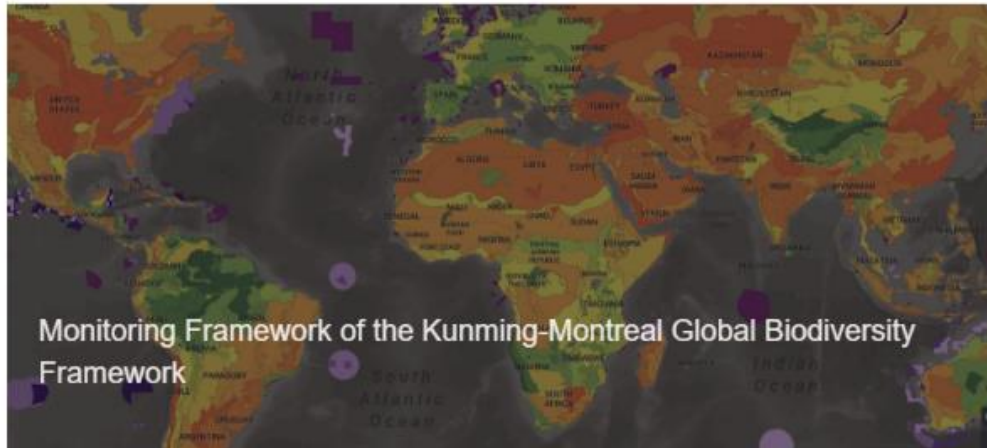
Discover

Explore popular data collections that unlock the power of data to generate insights to address critical issues for nature and sustainable development.

600 Data layers

Latest data collection links to Targets and indicators of Global Biodiversity Framework

<https://www.unbiodiversitylab.org/>



Building a Global Knowledge Support Service for Biodiversity

