

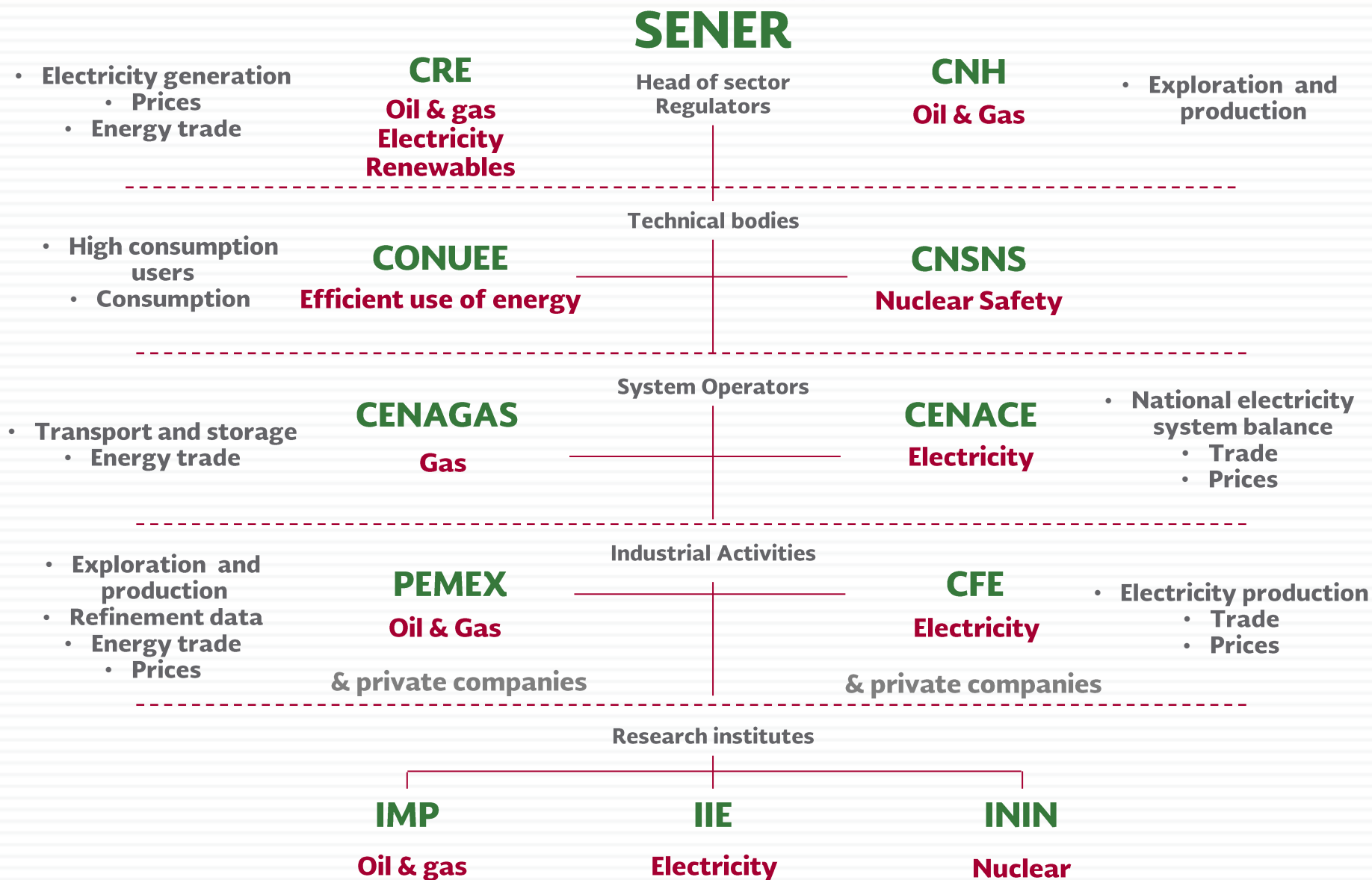


# **The use of Statistics for the development of National Energy Balance**

**May 11<sup>th</sup>, 2016**

- I. Background on energy statistics in México
- II. Information sources
- III. The use of statistics to build the energy balance

# **BACKGROUND ON ENERGY STATISTICS IN MÉXICO**



### **Direction General for Energy Planning and Information**

- Consolidates the energy sectorial program (derived from the National Development Plan) and tracks its statistics.
- Collaborates with international organizations in energy statistics, responds requirements from them, and participates in work groups.
- Establishes the criteria to determine the official information of the energy sector, including quality standards.
- Coordinates the official energy information platform.
- Coordinates the elaboration of the National Energy Balance.

## Energy sector – INEGI - SNIEG

- Coordinate and/or attend Committees and working groups
- Coordinate the energy data projects between Energy Institutions and INEGI.

## Energy Information System

- Maintenance
- Management
- Safekeeping
- Updates
- Manage local managers
- Address requests of information

## CTE-ISE

- Development and/or monitoring activities and meetings
- Committee
- Working groups

Open data initiative

## Statistics

### National

- NEB
- Monthly reports
- SNIEG / INEGI

### International

(monthly, quarterly and annual)

- AIE
- APEC
- OLADE
- UN
- ...

North American<sup>6</sup>  
Energy Statistics

# INFORMATION SOURCES

# Data providers

## Primary energy

	<b>Coal</b>	<b>Primary hydrocarbons</b>	<b>Renewables</b>
<b>Production</b>	INEGI SGM - CAMIMEX	PEMEX	CFE, CRE, SAGARPA
<b>Imports and exports</b>	INEGI – SE (customs info)	PEMEX	
<b>Transformation</b>	INEGI, CFE, CRE- Permit holders, estimations	PEMEX	CFE, PIE's CRE – Permt holders CRE-CFE Interconnection contracts SAGARPA Sugar Chamber
<b>Consumption</b>	CONUEE, Cement	PEMEX	ANES SAGARPA Sugar Chamber



# Data providers

## Secondary energy

### Coke

### Secondary hydrocarbons

### Electricity

#### Production

#### Imports and exports

#### Transformation

#### Consumption

INEGI – SE  
(customs info)

PEMEX, CRE,  
INEGI - SE  
(customs info)

CFE - CENACE, CRE,  
Permt holders,  
INEGI - SE

CAMIMEX  
INEGI, CFE,  
CRE- Permit holders

PEMEX, CFE, PIE's  
CRE – Permit holders

CFE, PIE's  
CRE – Permit holders

CONUEE,  
Industry,  
estimations

CONUEE, PEMEX,  
IMP, Sistemas de  
transp (metro,  
metrobus, etc)  
Industry, SAGARPA,  
etc...

CFE, CRE (Permit holders,  
interconnection contracts),  
CONUEE, Transport systems  
(metro, metrobus, etc)  
Industry, SAGARPA, etc...

# **THE USE OF STATISTICS TO BUILD THE ENERGY BALANCE**

Mean	Target (number of requests)	Information requested
Direct request	Transportation Sector – (7)	Energy Consumption
	Commissions and state productive enterprises– (5)	Production
	Industry Chambers-(17)	Sectorial survey
E-mail	Independent energy producers	Electricity generation and fuel consumption
	Mexican Petroleum Institute	Gas demand
	Liquefied Natural Gas Terminals	Natural gas balances
Data bases	SIE	Energy supply, demand and transformation
	BDI Pemex	
Public websites (Web)	Regulatory agencies	Hydrocarbons international trade
	Industry chambers	Fuel reports
	United States Department of Energy (DOE)	Reports on energy trade

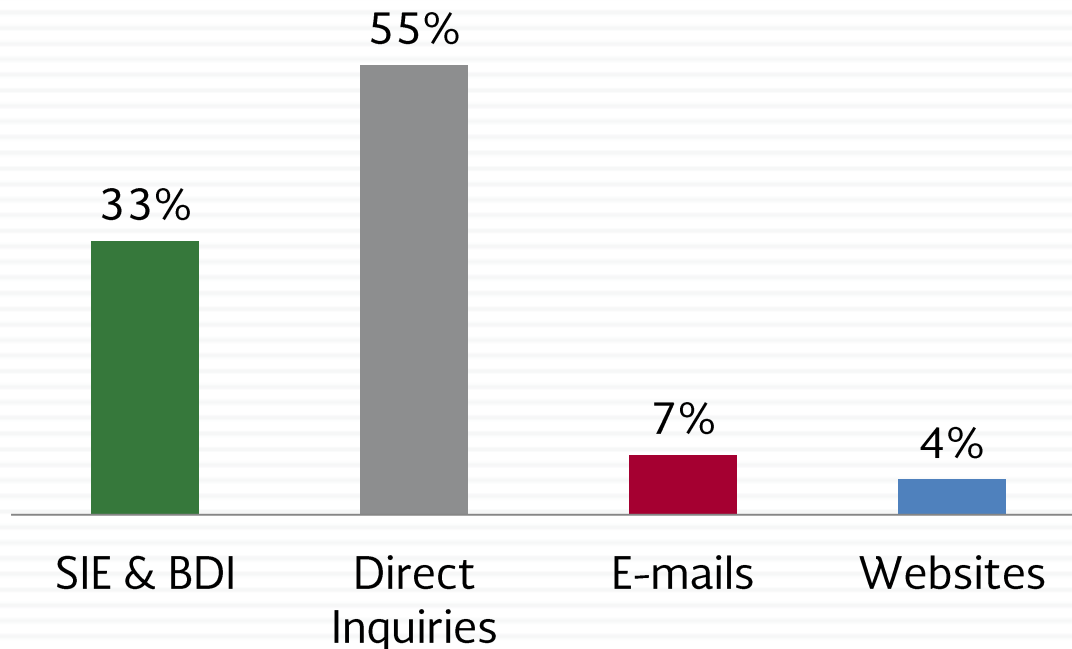
Approximately 326 archives are handled, in the following formats:

Excel	PDF	PowerPoint
315	9	2

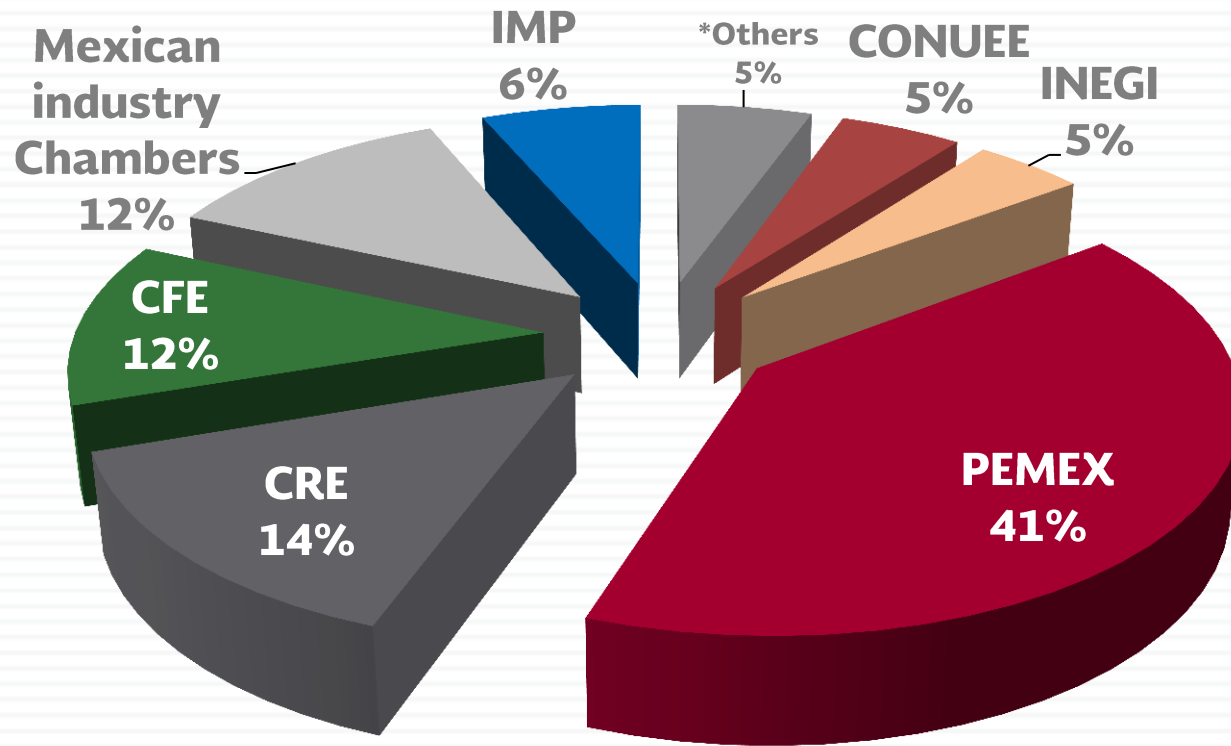


# TYPE OF INFORMATION PROCESSED

Information	Data series
Administrative records	247
Surveys <ul style="list-style-type: none"> <li>• Energy consumption in Industry (SENER)</li> <li>• Energy consumption in cement industry (SENER)</li> <li>• Energy consumption in transportation sector(SENER)</li> <li>• Mining production (INEGI)</li> </ul>	55



# DATA SERIES INCLUDED IN THE NEB

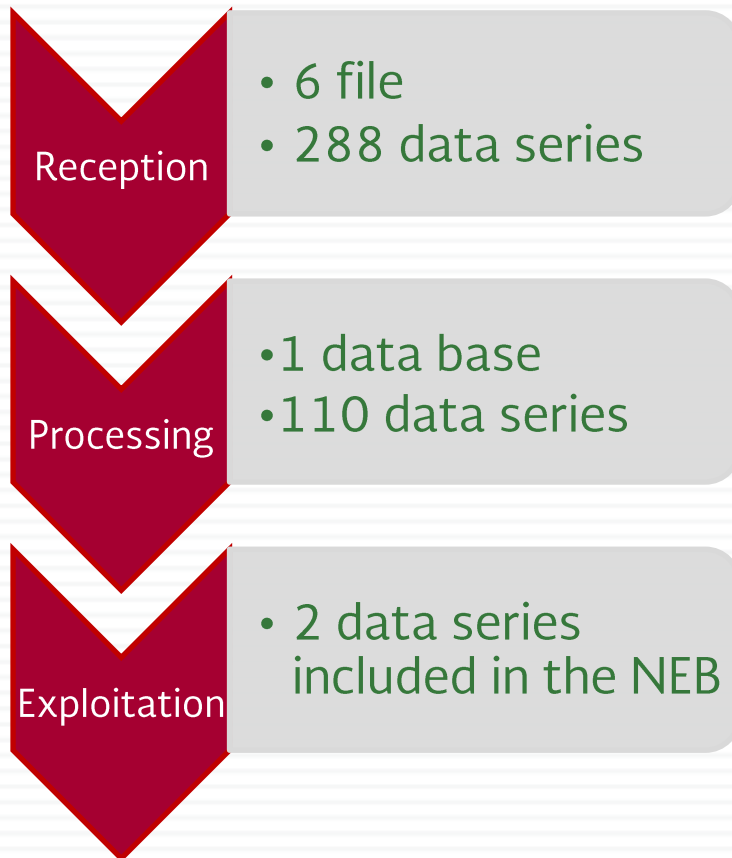


SIE y BDI Databases not included

\*others: ANES, CAMIMEX, etc.

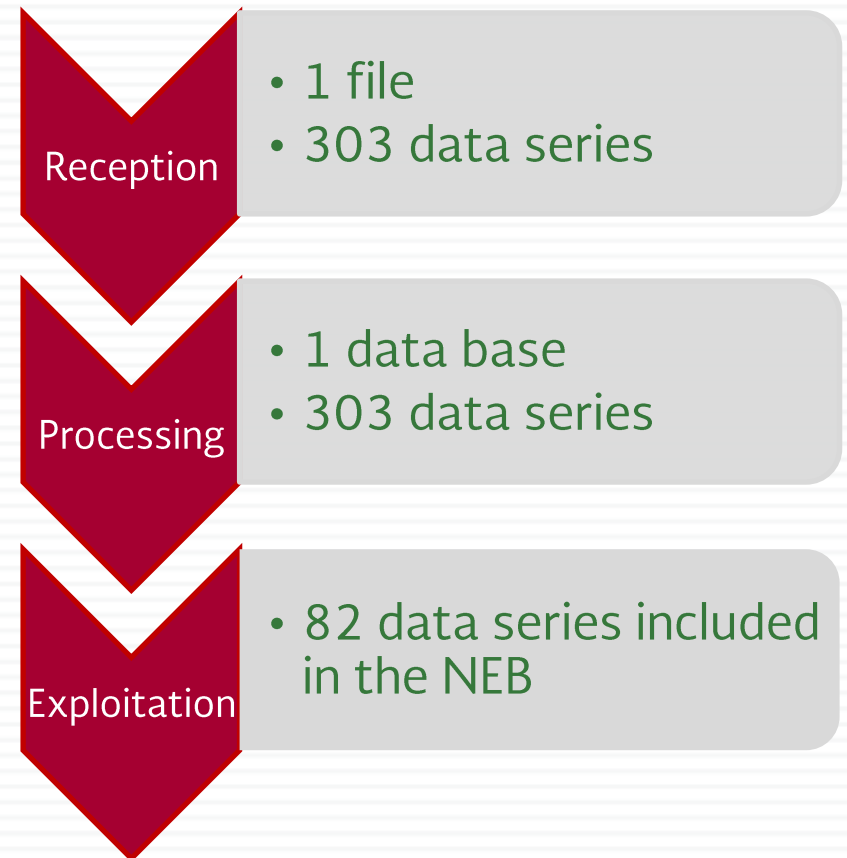
## Public transport system

Operation and energy consumption statistics

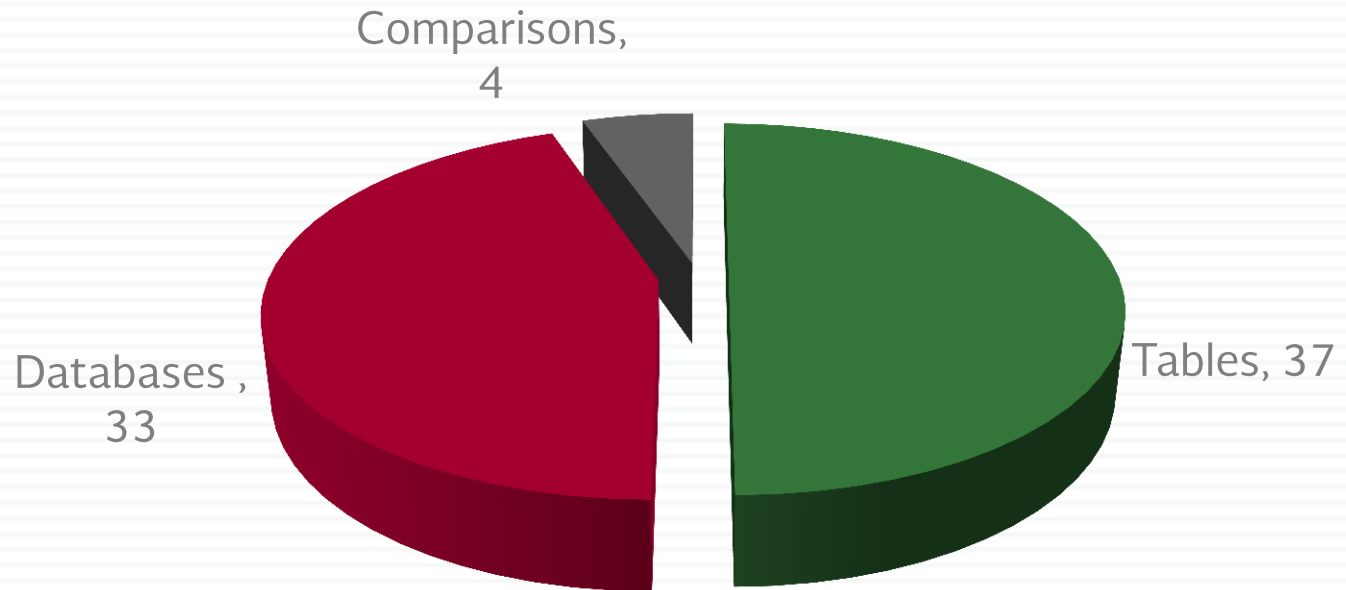


## PEMEX

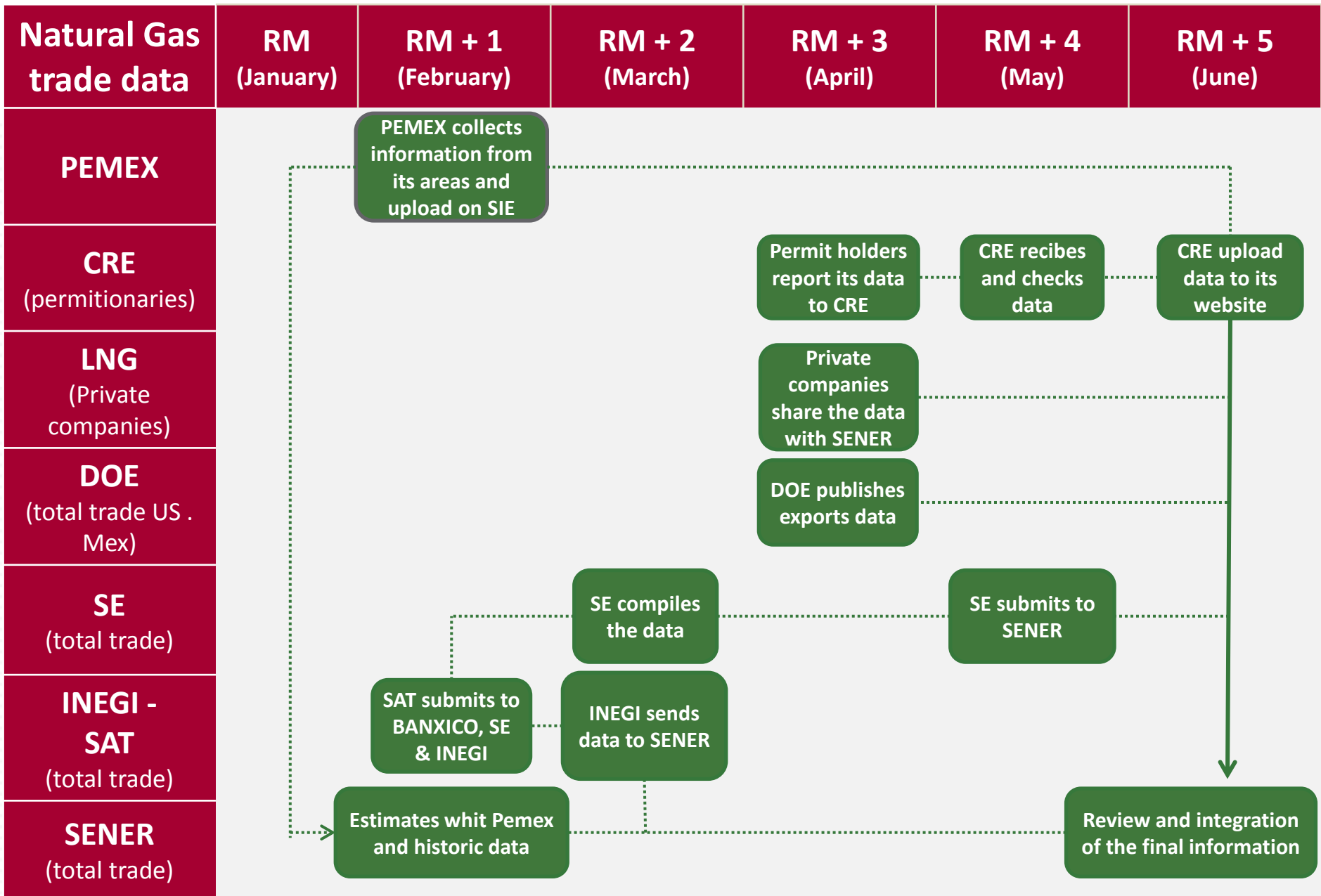
National hydrocarbon balance



# BASE PRODUCTS INTEGRATION







INEGI – National Institute of Geography and Statistics

SAT – Customs

PEMEX – Petróleos Mexicanos

CRE – Energy Regulatory Commission

LNG - Liquefied natural gas (private companies)

SE – Secretariat of Economy

DOE – U.S. Department of Energy

SENER – Secretariat of Energy

SIE – Energy Information System



# **The use of Statistics for the development of National Energy Balance**

**May 11<sup>th</sup>, 2016**