

# Integration of European data into the French Statistical Business Register

Second Meeting of the

UN Committee of Experts on Business and Trade Statistics

New York, 11–13 June 2019



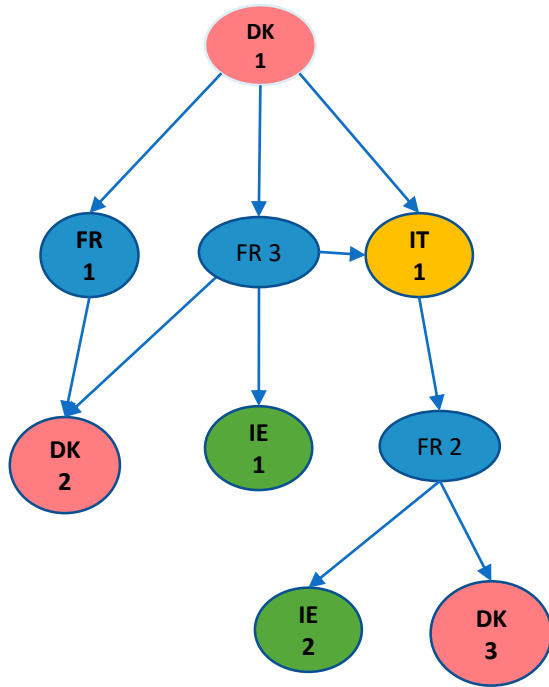
Isabelle Collet

- **Statistical Business Register (SBR) units**
- **National profiling**
- **European profiling**
- **EU and French Statistical Business Registers (SBRs) networks**
- **European SBR (EGR) an additional data source for French SBR**
- **Why? What? How?**
- **Examples of - EU SBR data integration and impacts**

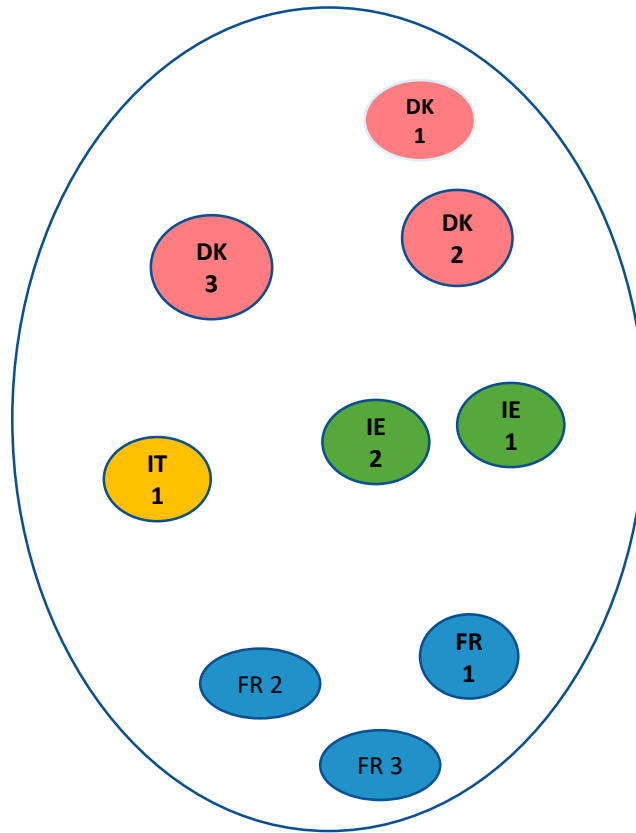
- **Legal Unit (LEU) is a Company legally speaking**
- **Group (Global Enterprise Group – GEG) is a set of Legal units linked by control relationships**
  - Nationality of the Group is the country of residence of the Legal Unit where strategic decisions referring to the Group are taken
- **Enterprises (ENTs) are statistical units reflecting the economic reality – EU Regulation (EC) 696/93**
  - “An enterprise is the smallest combination of legal units that is an organizational unit producing goods or services, which benefits from a certain degree of autonomy in decision-making, especially for the allocation of its current resources. An enterprise carries out one or more activities at one or more locations. An enterprise may be a sole legal unit”

- Insee, the French National Statistical Institute (NSI), delineates Enterprises (ENTs) within the French part of Groups (GEGs) implanted in France
  - French BR system builds up the group structure and perimeter using the relationships between LEUs
  - Data sources: national administration e.g. Central Bank, Commercial data. They mainly cover, relationships between FR LEUs and relationships between FR LEU and foreign LEU
- ENTs are national statistical units for Structural Business Statistics (SBS)
- For each ENT, Insee provides a full consolidated account
- For the most important GEGs, perimeter checking, delineation of ENTs and ENT consolidated accounts are managed by a “profiler” in close collaboration with the GEG
  - Manual profiling provides the high-quality data but it is very costly
- For the other GEGs delineation of ENTs and consolidated account are provided by an algorithm
  - Automatic profiling considers the French part of the GEG as one ENT

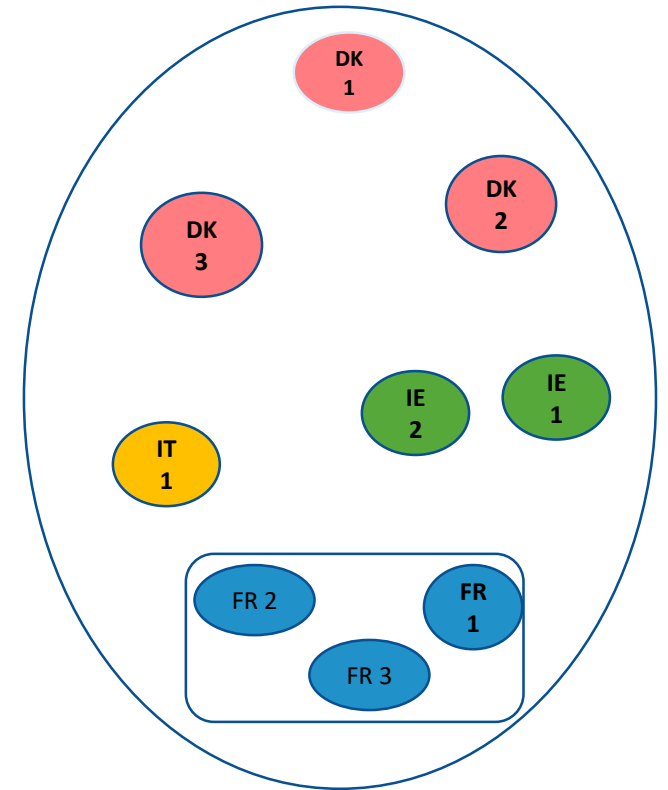
# National profiling



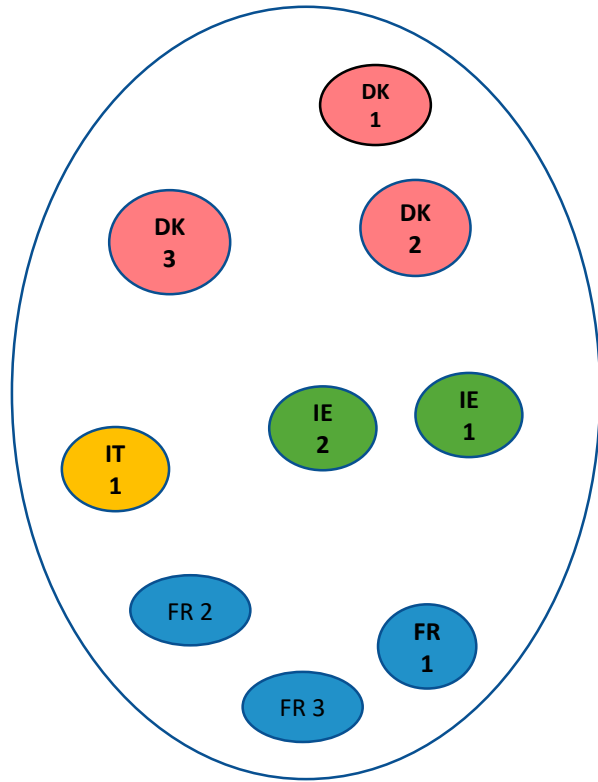
Group structure is set up by the French BR based on relationships between LEUS



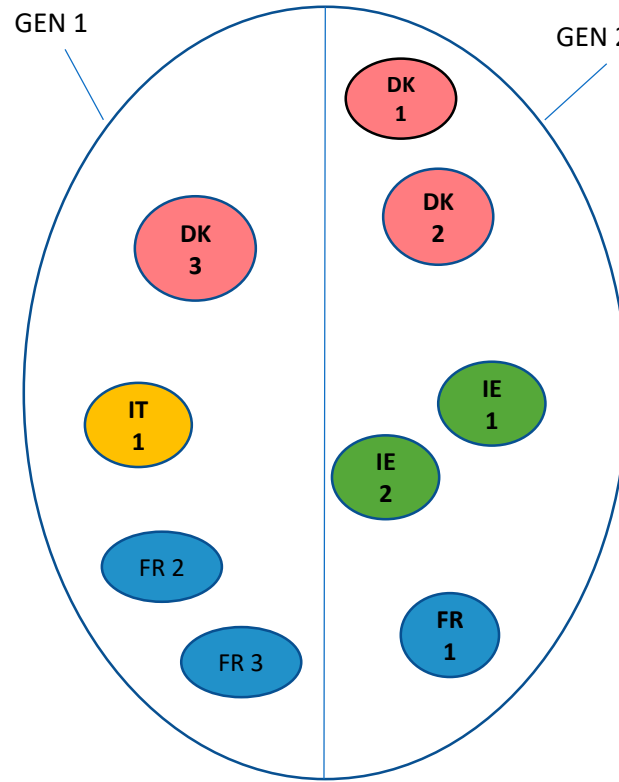
Group perimeter is the set of LEUs within the group



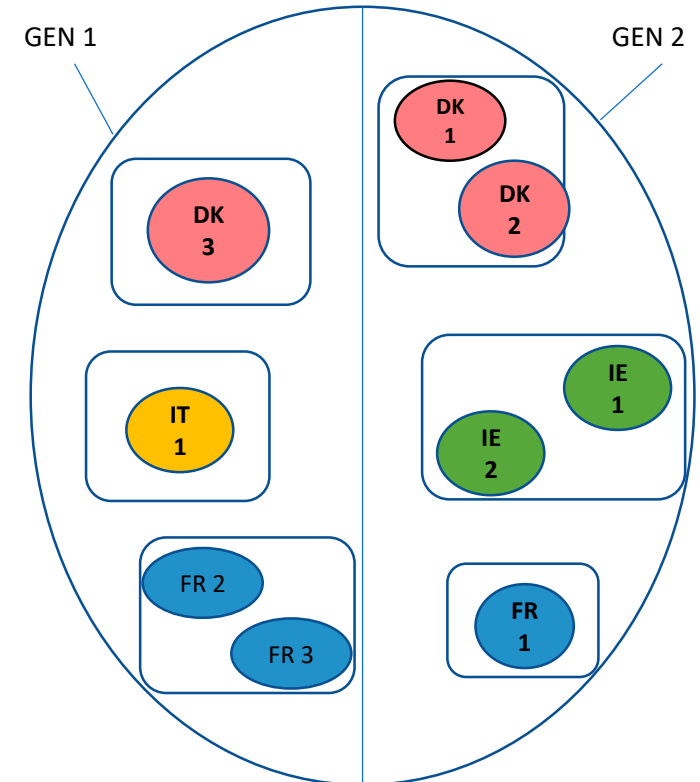
National profiling delineates French Enterprises within the national perimeter of the group



Danish Group perimeter is provided by the EU BR (EGR)



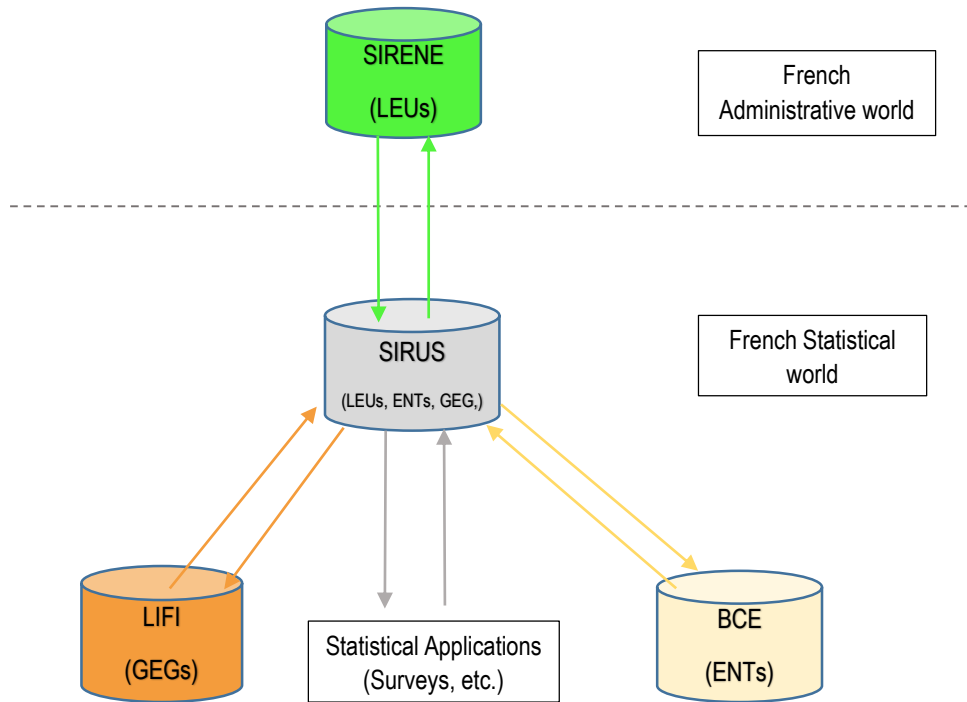
Danish profiler delineates 2 Global Enterprises (GENs) within the perimeter of the group



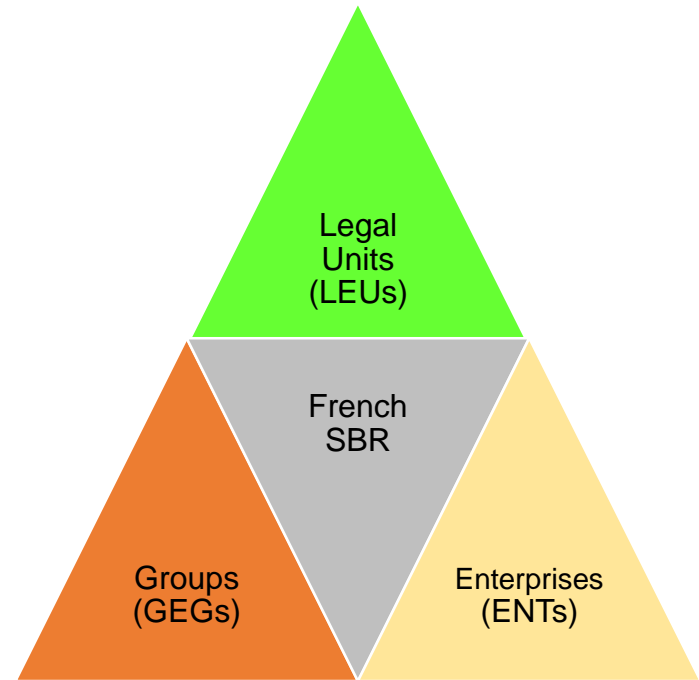
National footprints of the GEN called TENTs are proposed as ENTs to the IT, IE and FR NSIs

# French SBR integrated system

Dataflow within the French SBR network

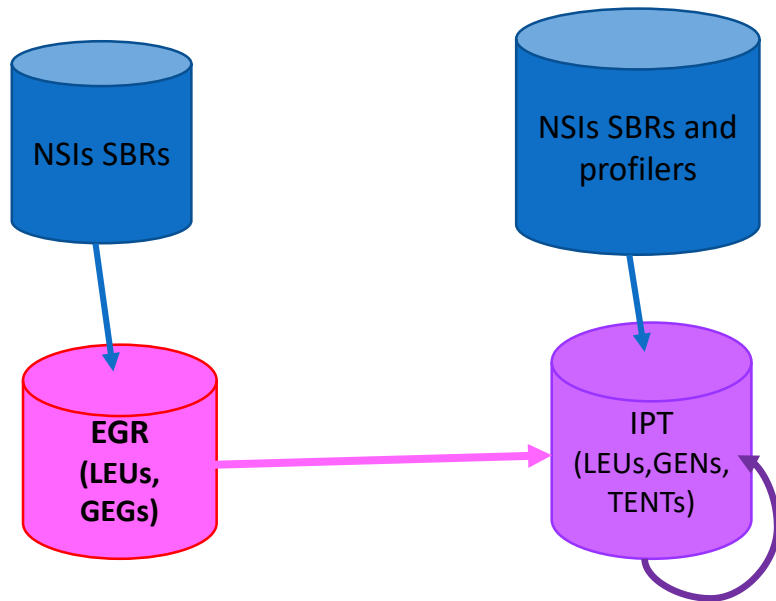


French SBR an integrated system

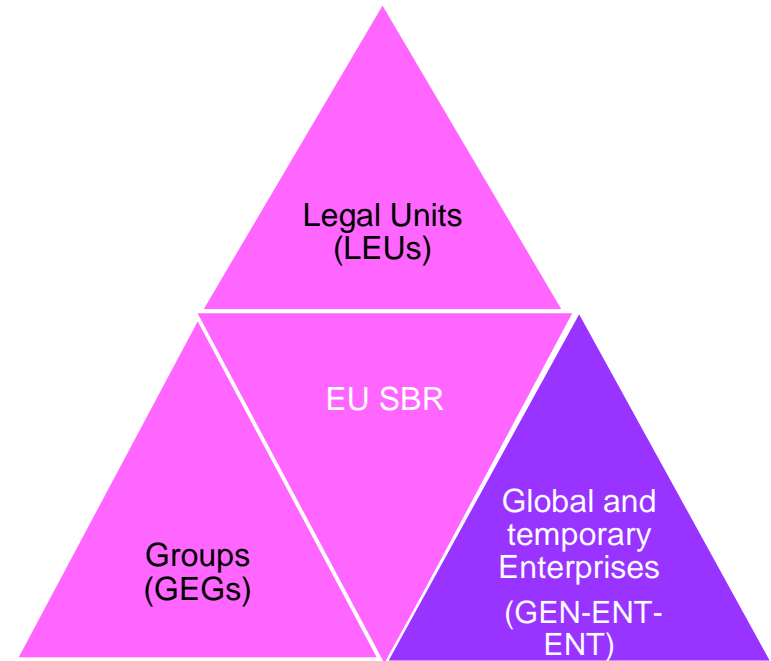


# European SBRs network

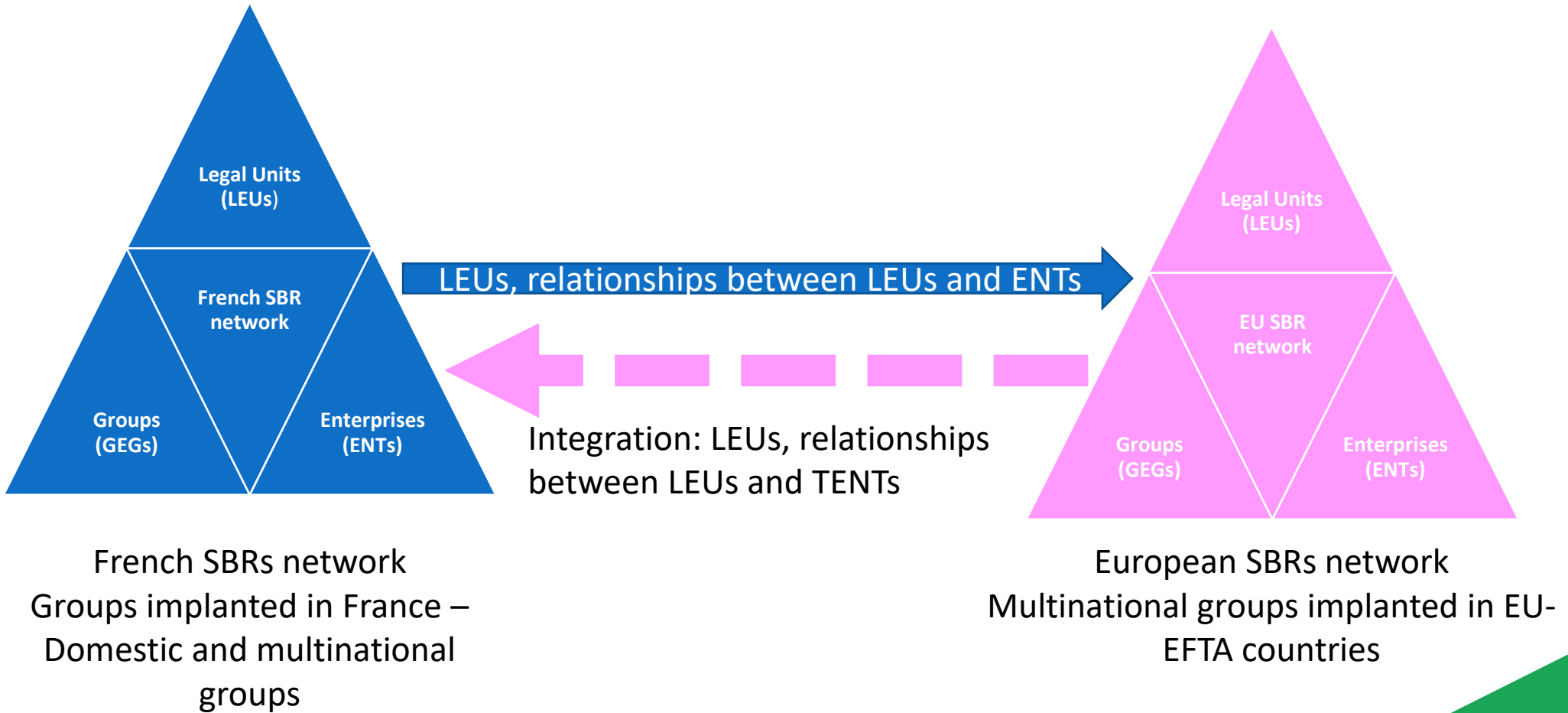
Dataflow within the EU SBR network



EU SBR a partial integrated system







# Why? What? How?

## How?

Use the data from EU SBR for:

Update the structure and  
perimeter of GEGs

Delineation of ENTs

## What?

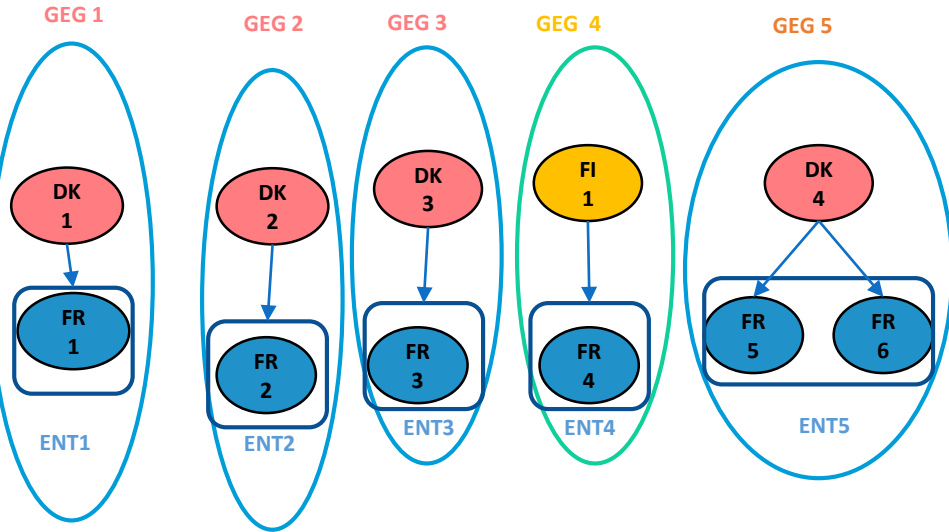
Foreign Group implanted  
in France , especially  
foreign GEGs profiled  
with an algorithm

## Why?

To improve  
French SBR  
quality

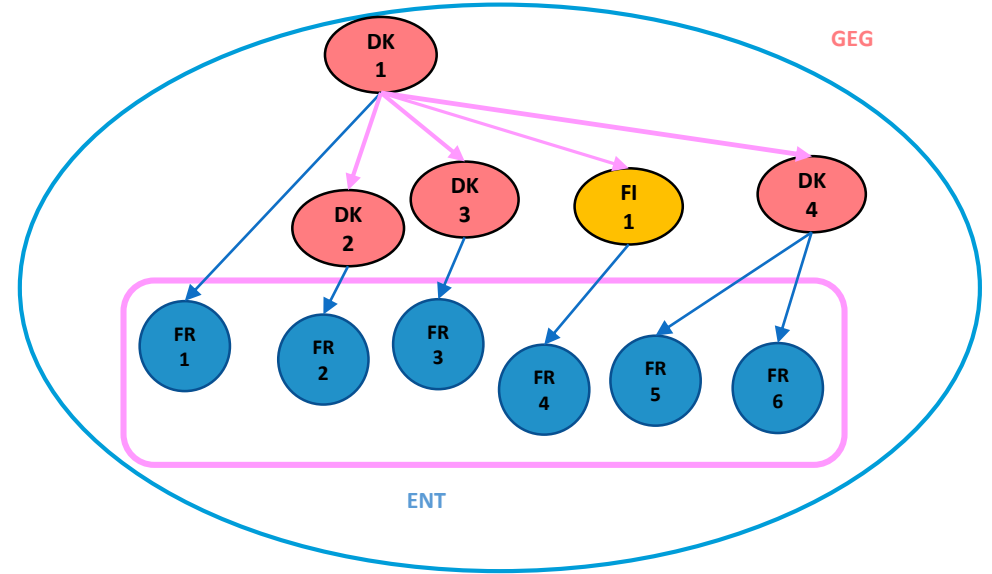
# Example 1 - EU SBR data integration

## Without EU SBR data integration



The French SBR considered 5 different GEGs and the algorithm created 5 ENTs with the French part of the GEGs. The French BR collects only the direct links between a French and a foreign LEU

## With EU SBR data integration



EU SBR provides a better GEG structure and perimeter and suitable ENT delineation  
One Danish GEG and one French ENT including 6 LEUs

## Example 1- impact of EU SBR integration at ENT level

### Without EU SBR data integration

Activity Nace code	Number of ENT	Turnover (K€)	Employment
Wholesale	2	182 483	182
Manufacture of machinery	1	138 370	408
Specialized construction activities	2	346	0
Total	5	321 199	590

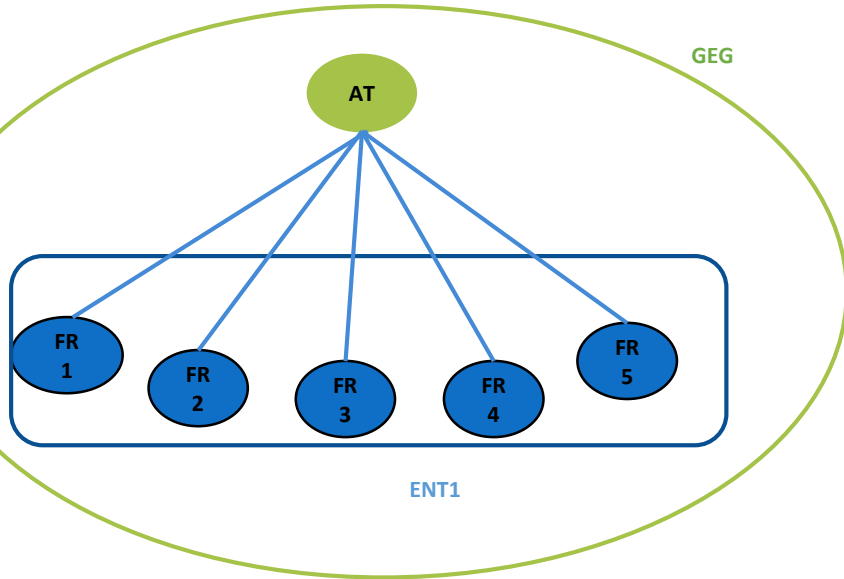
### With EU SBR data integration

Activity Nace code	Number of ENT	Turnover (K€)	Employment
Manufacture of machinery	1	182 829	590

Impact on the distribution by activity and on the amount of turnover with the consolidation

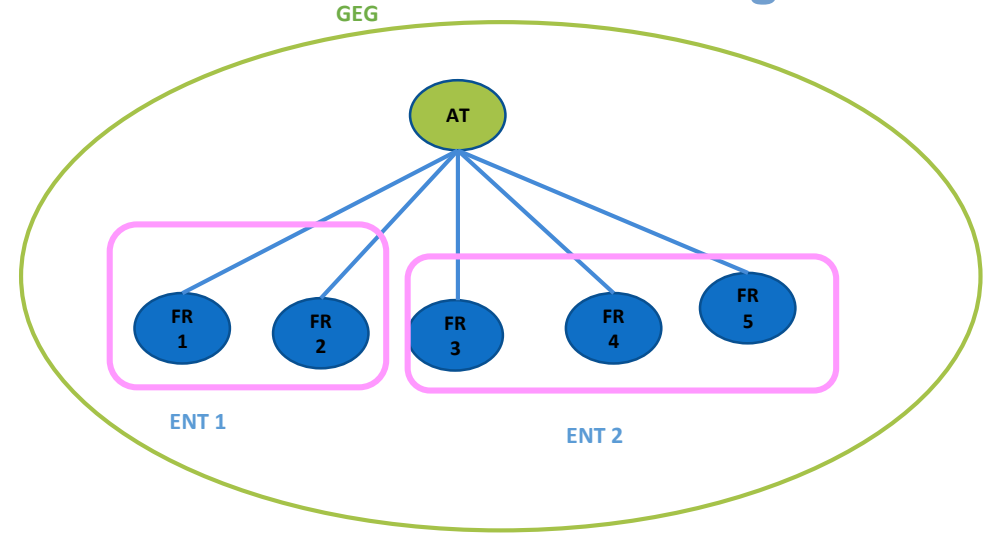
# Example 2 - EU SBR data integration

## Without EU SBR data integration



The French SBR considered one Austrian GEG and the algorithm created one ENT with 5 LEUs with the French part of the GEGs

## With EU SBR data integration



EU SBR provides, for the groups which are manually profiled a better ENT delineation  
One Austrian GEG with 2 French ENTs

# Thank you!

## Any question?

Join us on:

[insee.fr](http://insee.fr)



Pierrette SCHUHL

INSEE

Head of department on Business Registers,  
Infrastructures and Structural Statistics

[pierrette.schuhl@insee.fr](mailto:pierrette.schuhl@insee.fr)

Brussels, 12-15 March 2019