

UN Meeting on Business and Trade Statistics Exhaustive Business Register Task Team

Towards a more flexible ABS Business Register

June 2019

Australian Bureau of Statistics
Informing Australia's important decisions



ABS Business Register evolution

1950s-
Sample
surveys
introduced

1960s

- 1969 Integrated Economic Census
- EUM Introduced
- SNA 1968

1970s

- **ABS BR established**
- use of ATO tax data to update ABS BR

1980s

- **Profiling introduced**
- Ag Census merged with ABS BR

1990s

- **1995 First Common Frame**
- **1997 ABS BR redeveloped**
- ATO direct load to ABSBR increasing use of admin data
- SNA93 introduced

2000s

- **2001 Tax Reform GST introduced => ABN**
- started using ABR data
- Survey consolidation & migration to ABSBR
- ABS BR migrated to Oracle

2010s

- **ABS Address Register established**
- Corporate systems redevelopment (SBTP), including ABS BR
- 2017 Whole of Gov (WoG) Business Registry (admin) Modernisation commences

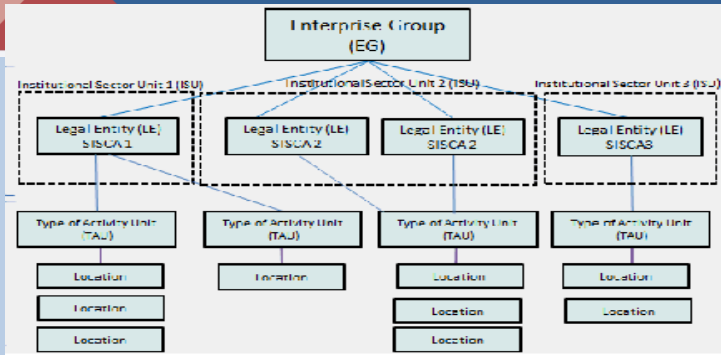
2020s

- **SBTP Registers on – boarding**
- Spine and data linking approaches
- **WOG Business Registry (admin) consolidation**

Future

- **WoG approaches**

ABS Business Register



Goal:

To develop, maintain and disseminate a high quality, real world, real time business register that enables coherent and integrated data series

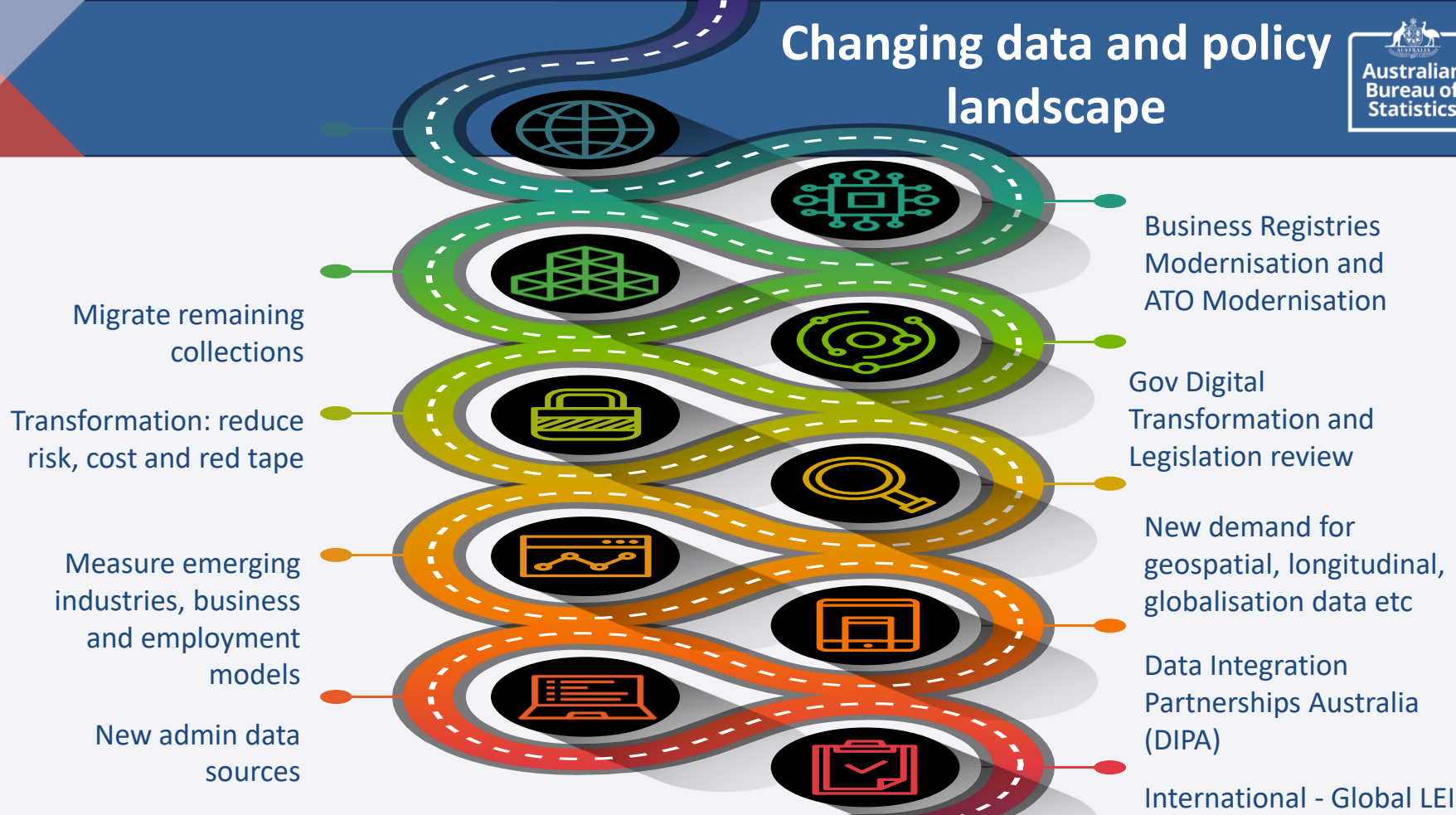
Uses:

1. Shared list of businesses and shared infrastructure for business surveys
2. Deliver key business demography statistics
3. Enable statistical solutions / insights through data integration

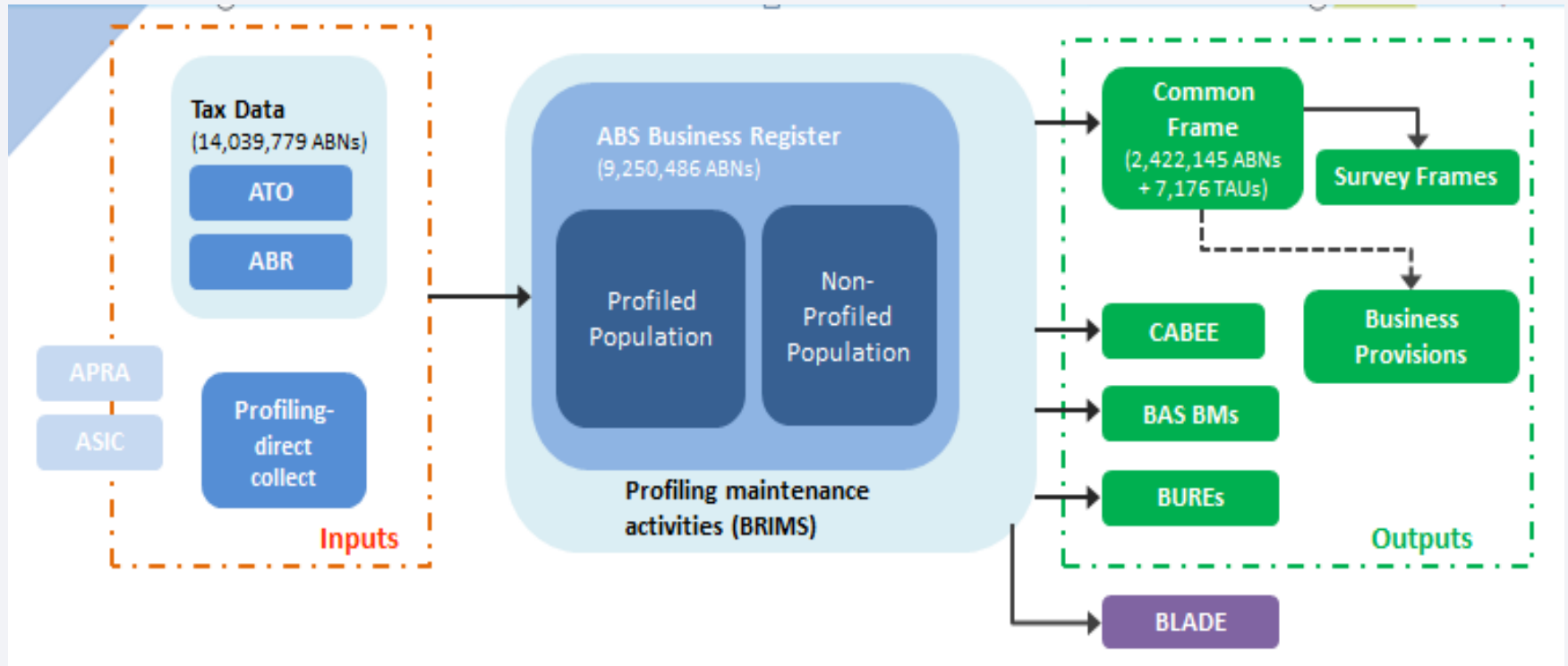
Key content:

Address, contact details, Business name
 Structural relationships (Eco Units Model)
 Size: Employment, turnover
 Classifications: Industry, sector, legal type, NPI
 Joint ventures
 Survey specific coverage info

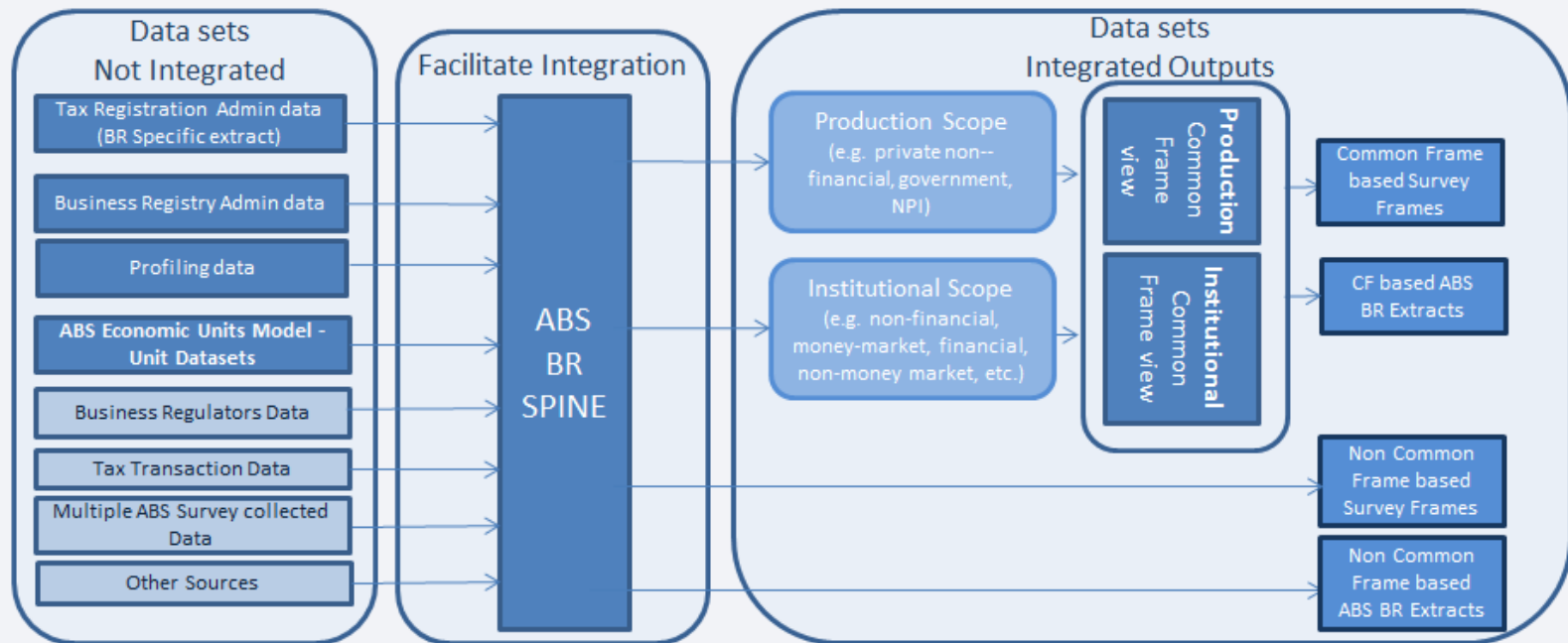
Changing data and policy landscape



ABS Business Register – current state

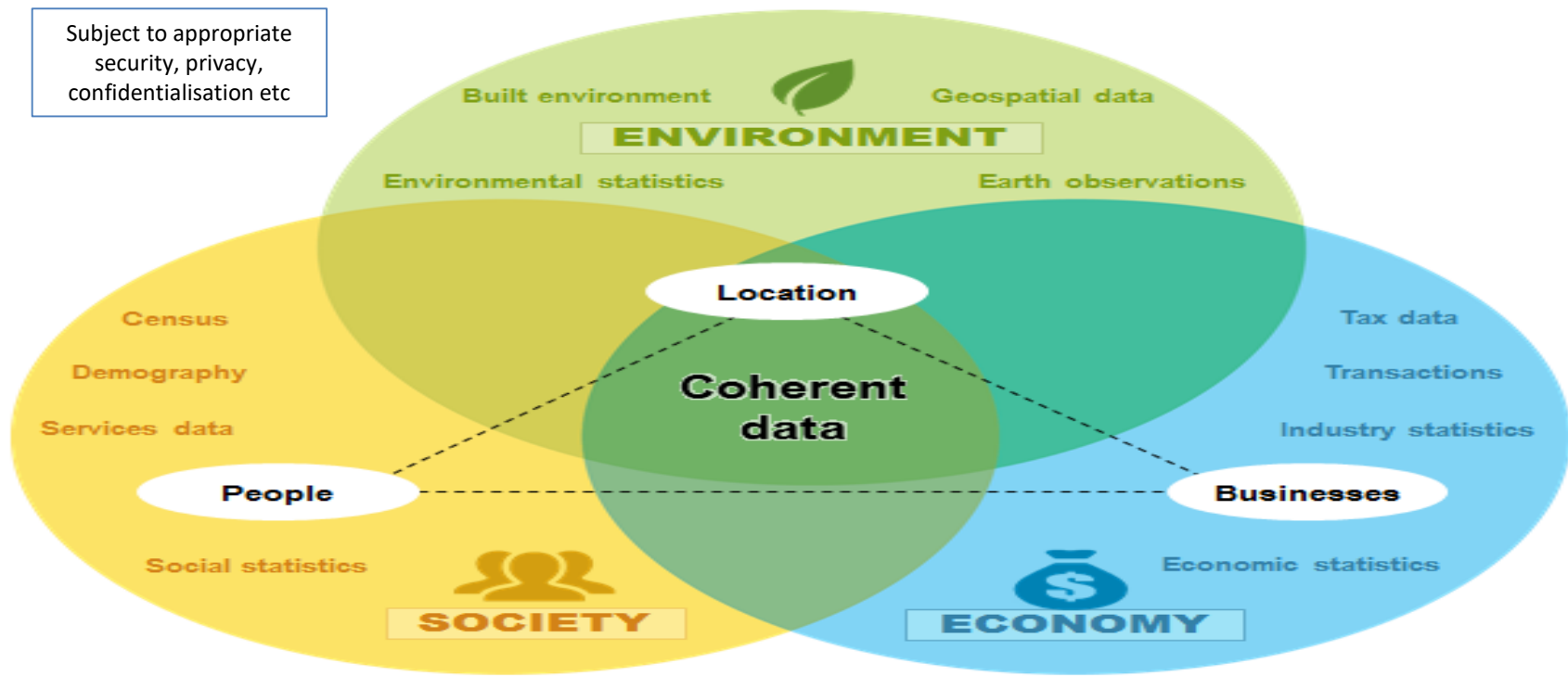


ABS Business Register vision



Broader Statistical Infrastructure - spines

Subject to appropriate
security, privacy,
confidentialisation etc



Benefits of the spine approach

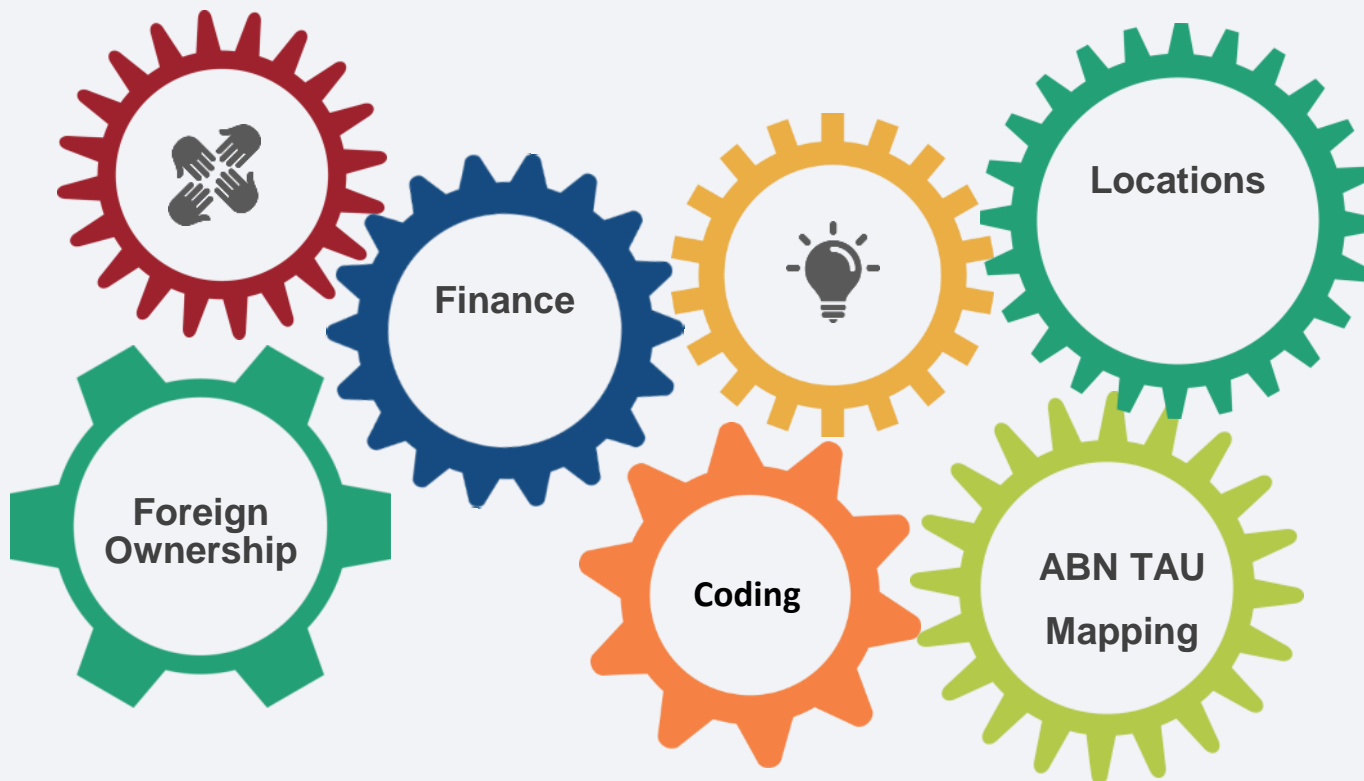
▶ Statistical Production

- ❖ Better identify activities or characteristics through flags to support alternate industry views
- ❖ More collections can use ABS Business Register, including financial and international surveys
- ❖ Broader use of admin data sources to expand the ABS BR scope
- ❖ Replace direct collect data with admin data
- ❖ Enhanced business demography
- ❖ Reduced cost, improved timeliness, reduced statistical risk and provider burden.

▶ Statistical Solutions

- ❖ Spine allows many other datasets (cross domain) to be linked for analysis, research etc. This will enable cross cutting insights to complex policy questions.
- ❖ Enables low level regional data
- ❖ Better longitudinal data
- ❖ Enables to position for future

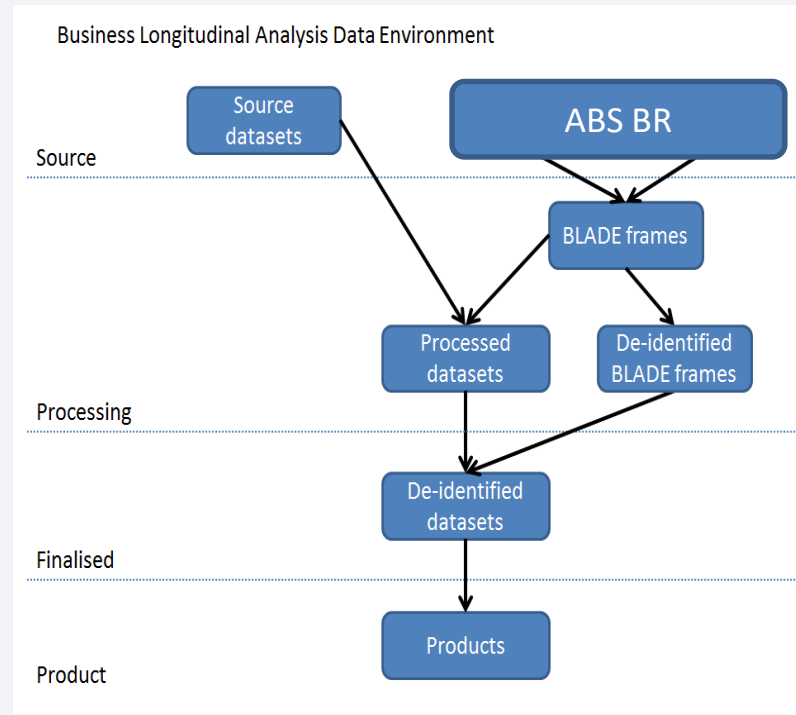
Future focus – data coverage and quality



External solutions – meeting the demand NOW

BLADE – Business Longitudinal Analytical Data Environment

- Introduced in 2015
- Timeseries starts in 2001-02
- Available with 2 year time lag (eg. 16-17 released in 2019)
- Core BLADE: ABS BR and ATO data
 - Optional customised ABS datasets – Business Characteristics and Annual Industry Survey data
 - Agencies can also provide their own data for linking
- Allocation of data within Enterprise Groups can differ between ABS BR and BLADE (different methods)



Investigating the characteristics of businesses (e.g. business size) that used the government's employment services in 2014/15, including having a job seeker placed with the business or having used waged subsidies.

Evaluating program participation and performance of firms that employ specific types of working visa.

Understanding the recent weakness in average wage growth and any potential links to a loss of bargaining power for workers.

Analysing the clustering of firm sizes for small and medium enterprises, the link between firm age and productivity and persistence of entry conditions.

Policy Uses of BLADE

Thank you

Further details: luisa.ryan@abs.gov.au