



Republic of the Philippines  
Philippine Statistics Authority



# Country Experience on Compilation of Supply Table

**Kristy Ann G. Meguiso**  
Production Accounts Division (PAD)  
Macroeconomic Accounts Service (MAS)  
International Workshop on Supply and Use Table  
Beijing, China  
11-13 September 2018



# Outline of Presentation

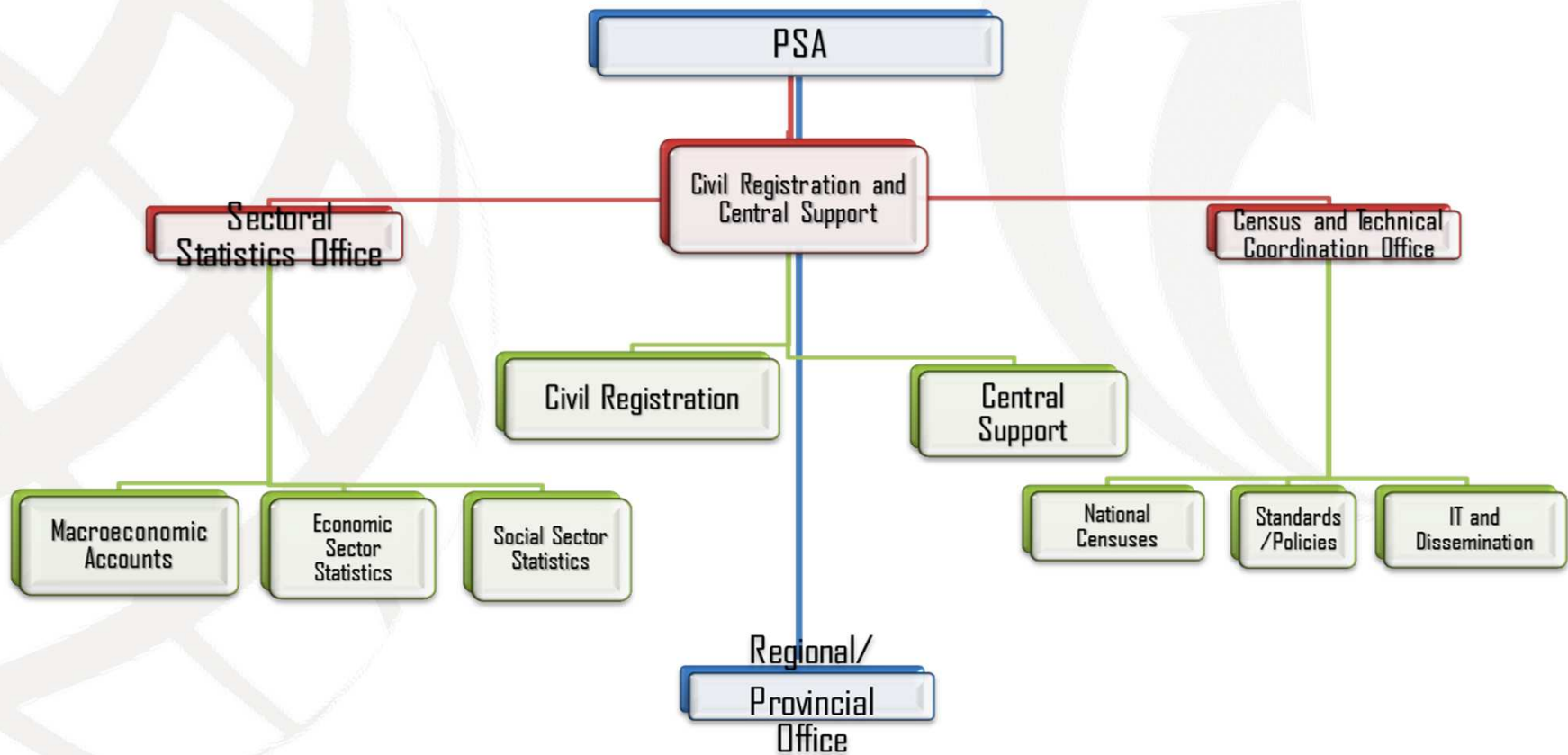
- I. Philippine Statistical System**
- II. Compilation of Supply Table**
- III. Future Direction**

## I. The Philippine Statistical System

- The Philippine Statistical System is composed of policy-making bodies, data producers, users, research and training institutions, and data providers.
- It is a government-wide system of providing statistical information and services to the public.
- The Philippine Statistical Act of 2013 creates the **Philippine Statistics Authority**, for the purposes of policy coordination on sectoral statistics, censuses and technical coordination, civil registration and central support and field statistical services.

# I. The Philippine Statistical System

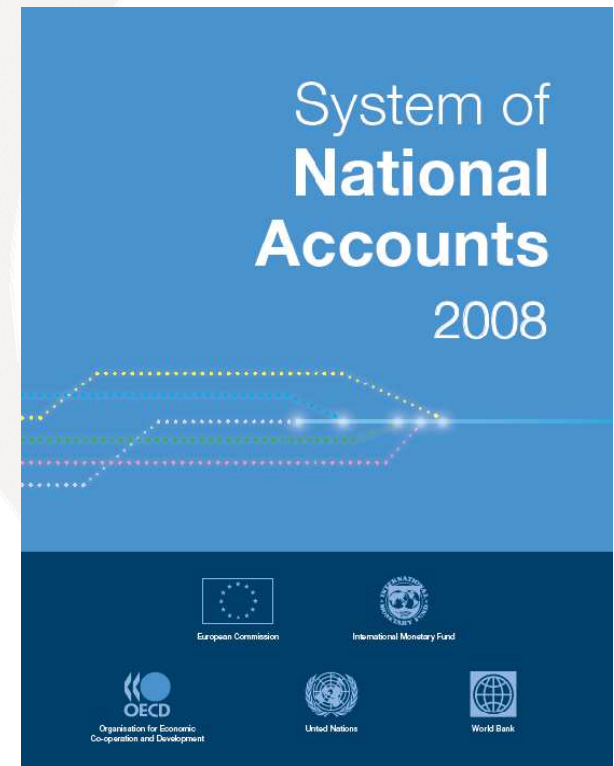
## The Philippine Statistics Authority



# I. The Philippine Statistical System

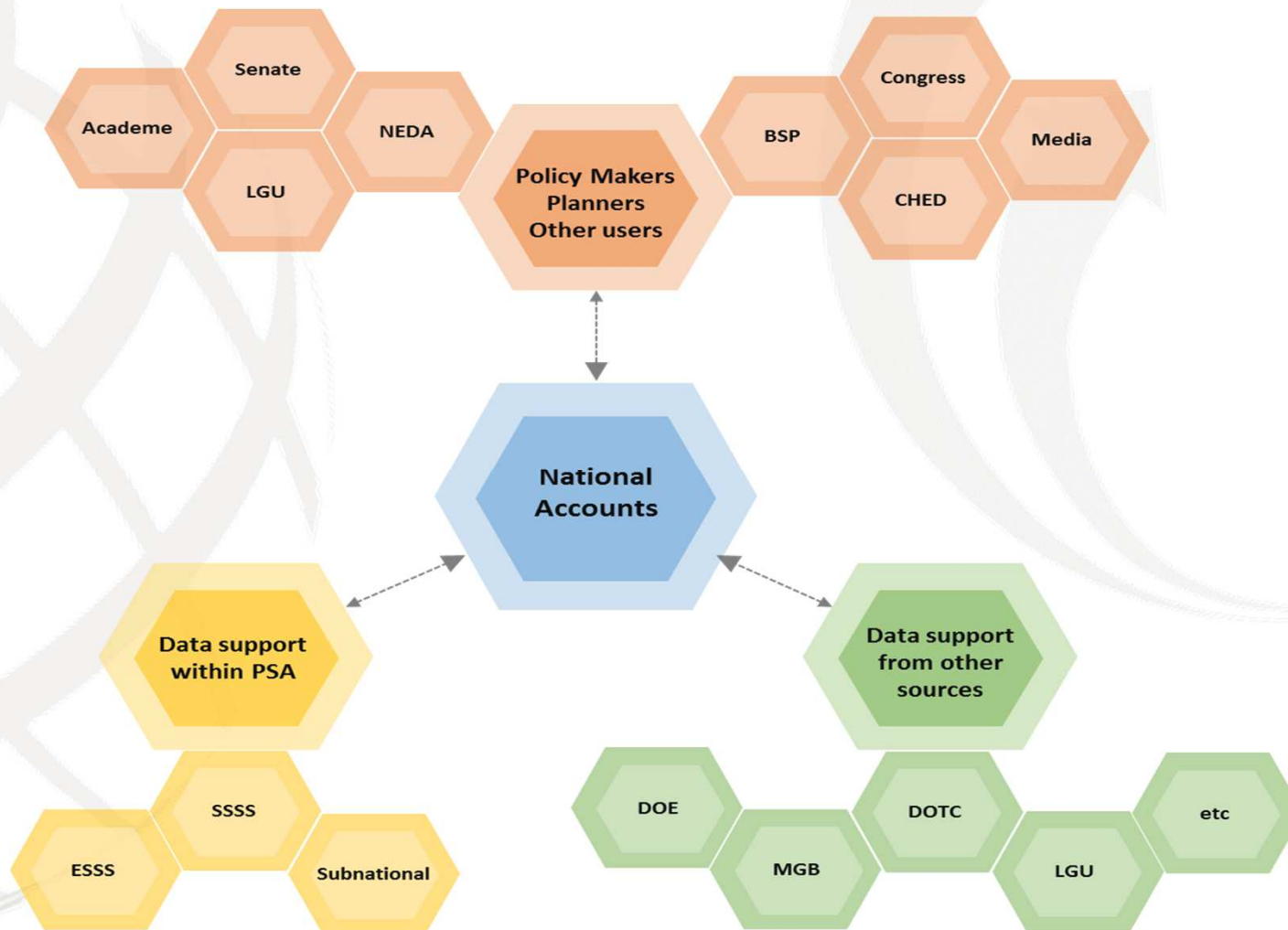
## National Accounts of the Philippines

- Unified framework compiling main economic aggregates; provides information on economic interactions taking place between different sectors of the economy.
- The Philippine System of National Accounts currently adopts the 2008 System of National Accounts



# I. The Philippine Statistical System

## The Philippine System of National Accounts (PSNA)



# I. The Philippine Statistical System

## Current Releases:

- Quarterly and Annual National Accounts by Production and Expenditure
- Income and Outlay Accounts and Consolidated Accounts
- Gross Regional Domestic Product
- Gross Regional Domestic Expenditure

## Other Accounts presently compiled:

- Input-Output Accounts
- Provincial Product Accounts – Pilot Provinces (Guimaras and Palawan)
- Satellite Accounts
  - Philippine National Health Accounts (PNHA)
  - Philippine Tourism Satellite Accounts (PTSA)
  - Philippine Economic Environment and Natural Resources Accounts (PEENRA)

## II. Country Experience on the Compilation of Supply Table

- **Basic Data Source**

- Census of Philippine Business and Industry (CPBI)
- Annual Survey of Philippine Business and Industry (ASPBI)
- Input-Output Survey of Philippine Business and Industry (IOSPBI)
- Administrative Data
- Financial Statements
- Foreign Trade Statistics (exports and imports)



## II. Country Experience on the Compilation of Supply Table

- **Estimation Methodology**

### Background

Currently, the Philippines compile 65 x 65 SUT for internal use only. It is used for the compilation of Input-Output Table.

The supply side shows the total value of output of 65 product commodities of the total 65 industries, which collectively represents the output of the domestic economy

## II. Country Experience on the Compilation of Supply Table

- **Estimation Methodology**

The estimates of output and value added by industry include both the organized and the unorganized activities.

The output of the organized sector is estimated using the establishment data coming from the mentioned data sources while the output of the unorganized sector is indirectly estimated using the residual employment approach.

## II. Country Experience on the Compilation of Supply Table

- **Estimation Methodology**

The result of the IOSPBI was used for the structure of intermediate demand of industries and the products of the industries as well. The resulting structure is then validated from different sources (financial statements, surveys, etc.)

Estimates for imports were gathered from foreign trade statistics.

In many cases, lack of information makes it necessary to use assumptions about what products are produced by the industries as secondary products?

### III. Future Direction

- Compilation of SUT and IOT for the Overall Revision and Rebasing of System of National Accounts
- More disaggregated IO Table (240 x 240)



<http://www.psa.gov.ph>



/PhilStatAuthority



@PSAgovph