

# Gazetteer for New Zealand

*Side Event:* Demonstration of New Gazetteers/Databases

*Date/Time:* Tuesday 31 July 2012, 1pm to 2.45pm

*Chair:* Pier-Giorgio Zaccheddu, Convenor of the Working Group on  
Toponymic Data Files and Gazetteers of UNGEGN

Wendy Shaw | Secretary, New Zealand Geographic Board  
Ngā Pou Taunaha o Aotearoa

See related Report E/CONF.101/51 on the UNGEGN Website

# Outcomes for External Users



- Access to history, origin and meaning for official names
- Text and spatial searching
- View physical extent of officially name named features
- Open layers of data for WFS connection or downloads

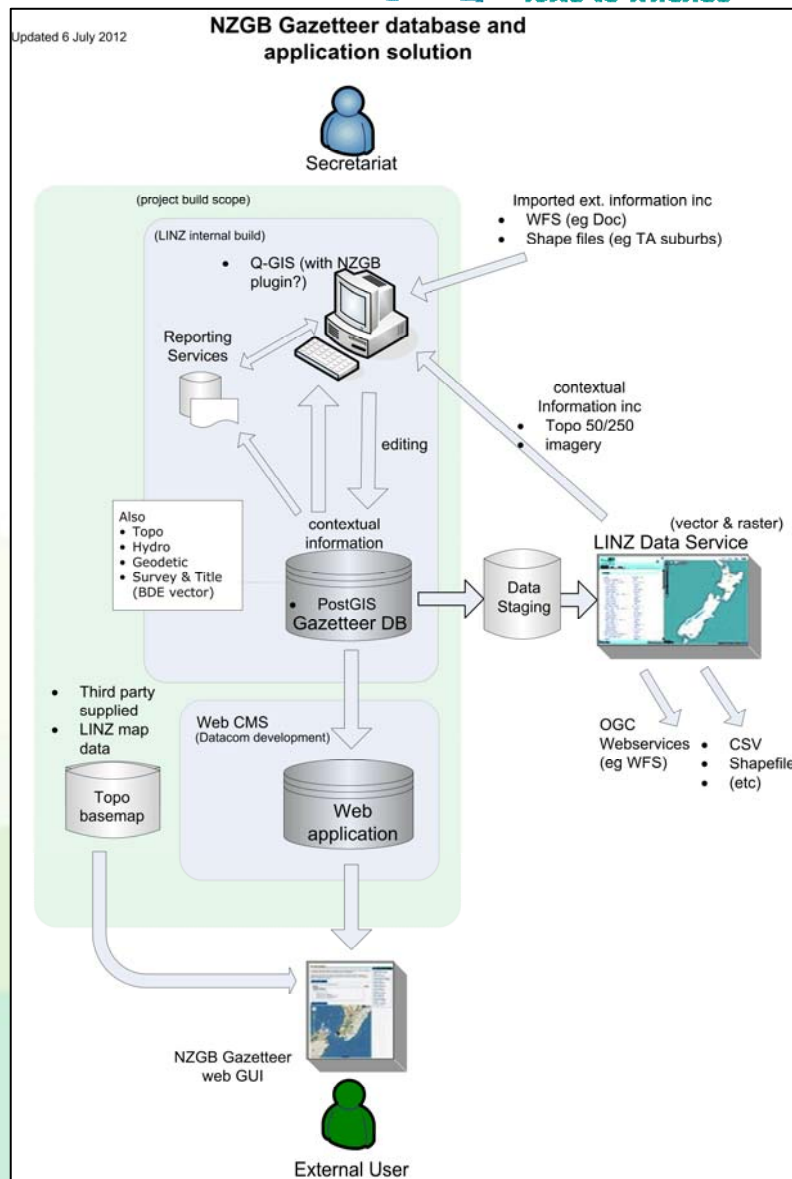
# Project Work Allocation



- RFP – Request For Proposal, 2010 – resulted in the need for a more cost-effective solution
- Database design/schema, build, testing, migration, open layers, base map, completed internally by LINZ
- Web Application developed by Datacom, LINZ's IT service provider
- Base map hosted/served by third party (Koordinates Ltd)

# Application Solution

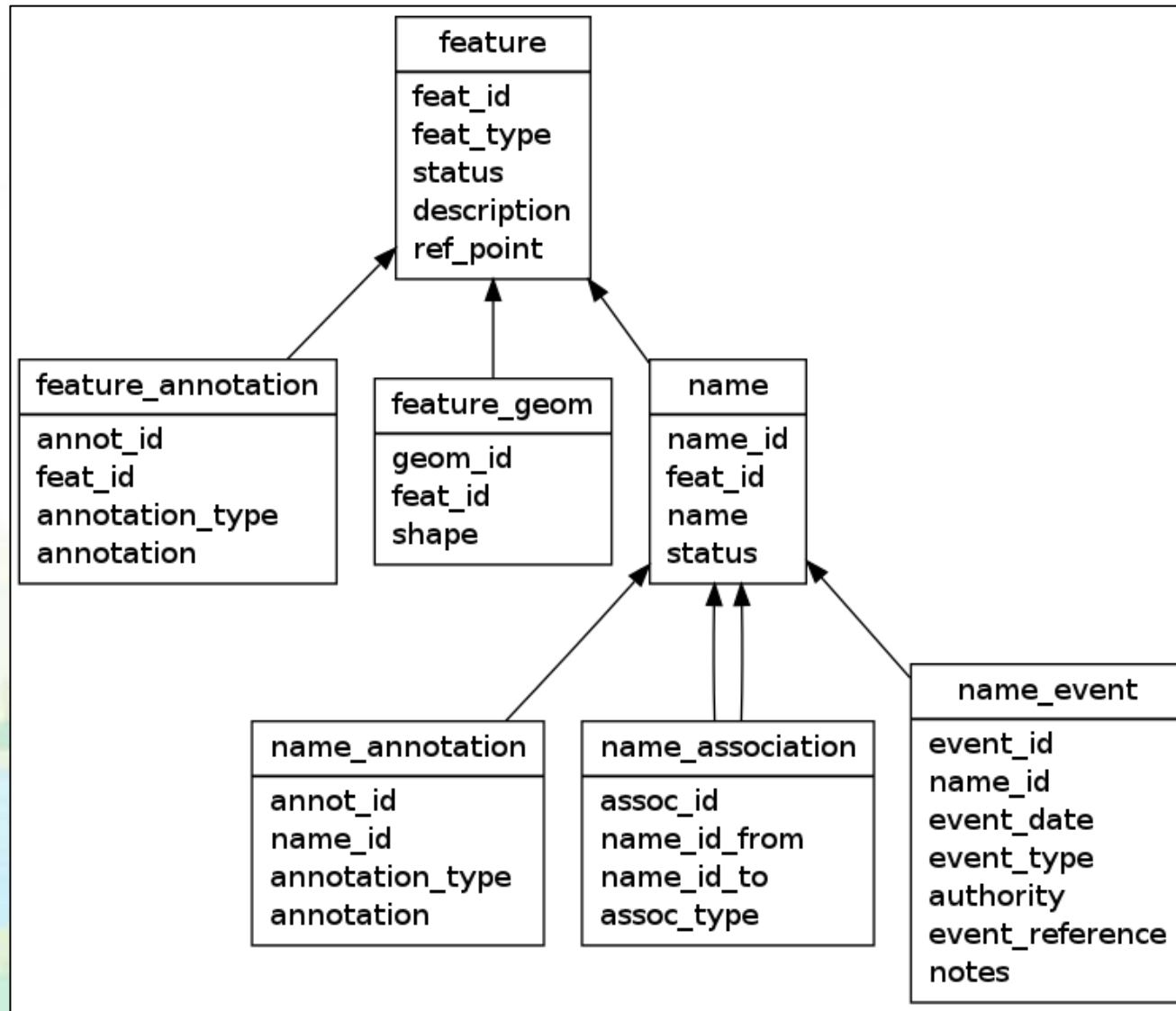
- **Secretariat**
  - Quantum GIS
- **External User**
  - Web Application
  - LINZ Data Service



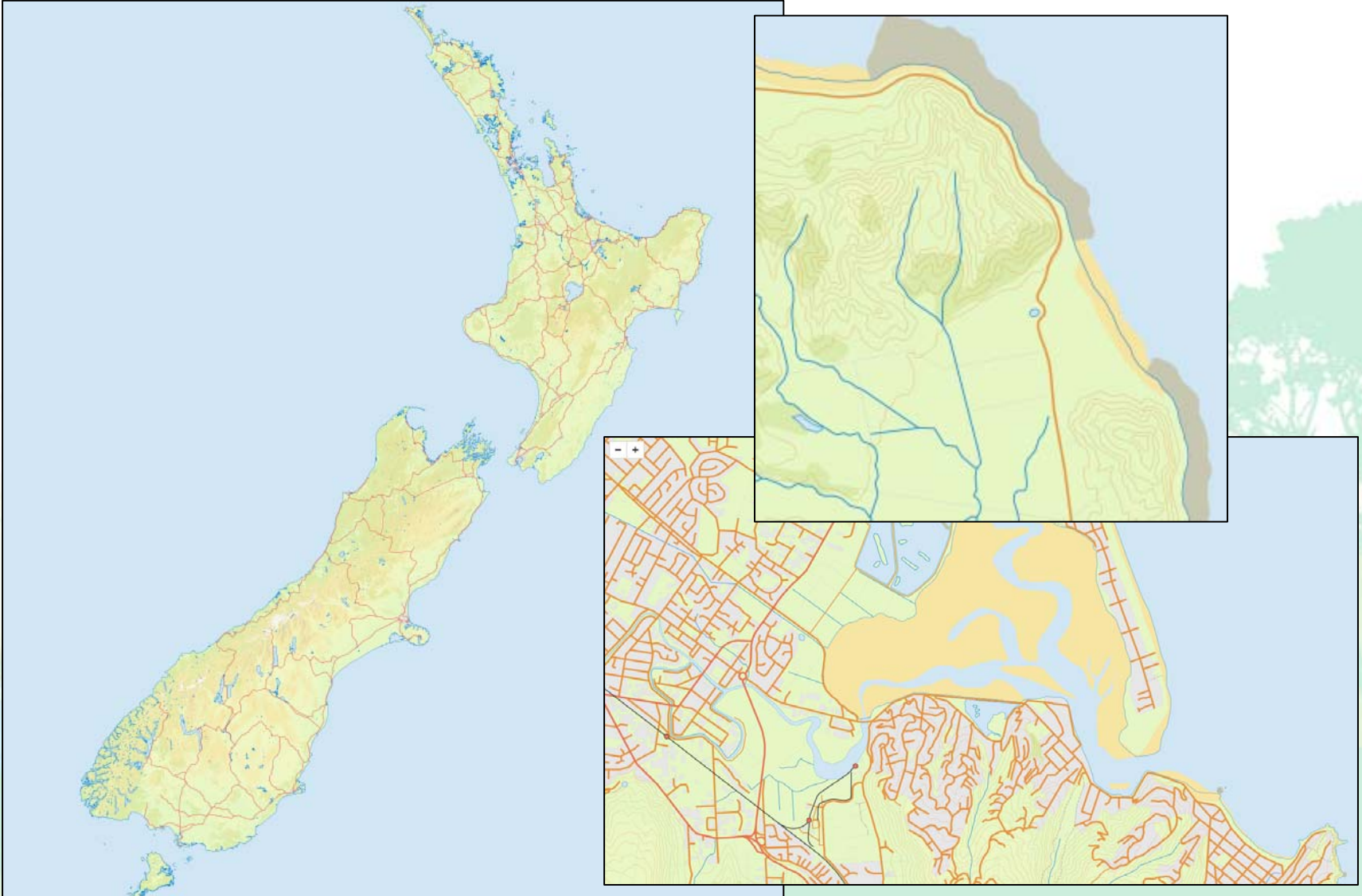
## Benefits:

- Open source components
- Customised Quantum GIS Management application built with Python
- Easy incorporation of many mapping data services
- Uses in-house knowledge/expertise
- Low total cost
- Responsive open source community for support

# Database Model/Schema



# Base Map



## Constraints/Issues/Challenges



- Web App does not have a base map for Antarctica or the Continental Shelf of New Zealand
- Web App does not include advanced searches, eg searching for just official names. Rationale: cost and simplicity, noting that external users can download the whole dataset as a CSV file or use the open layers in their GIS applications
- Data quality issues from current data formats
- LINZ staff working on other priorities



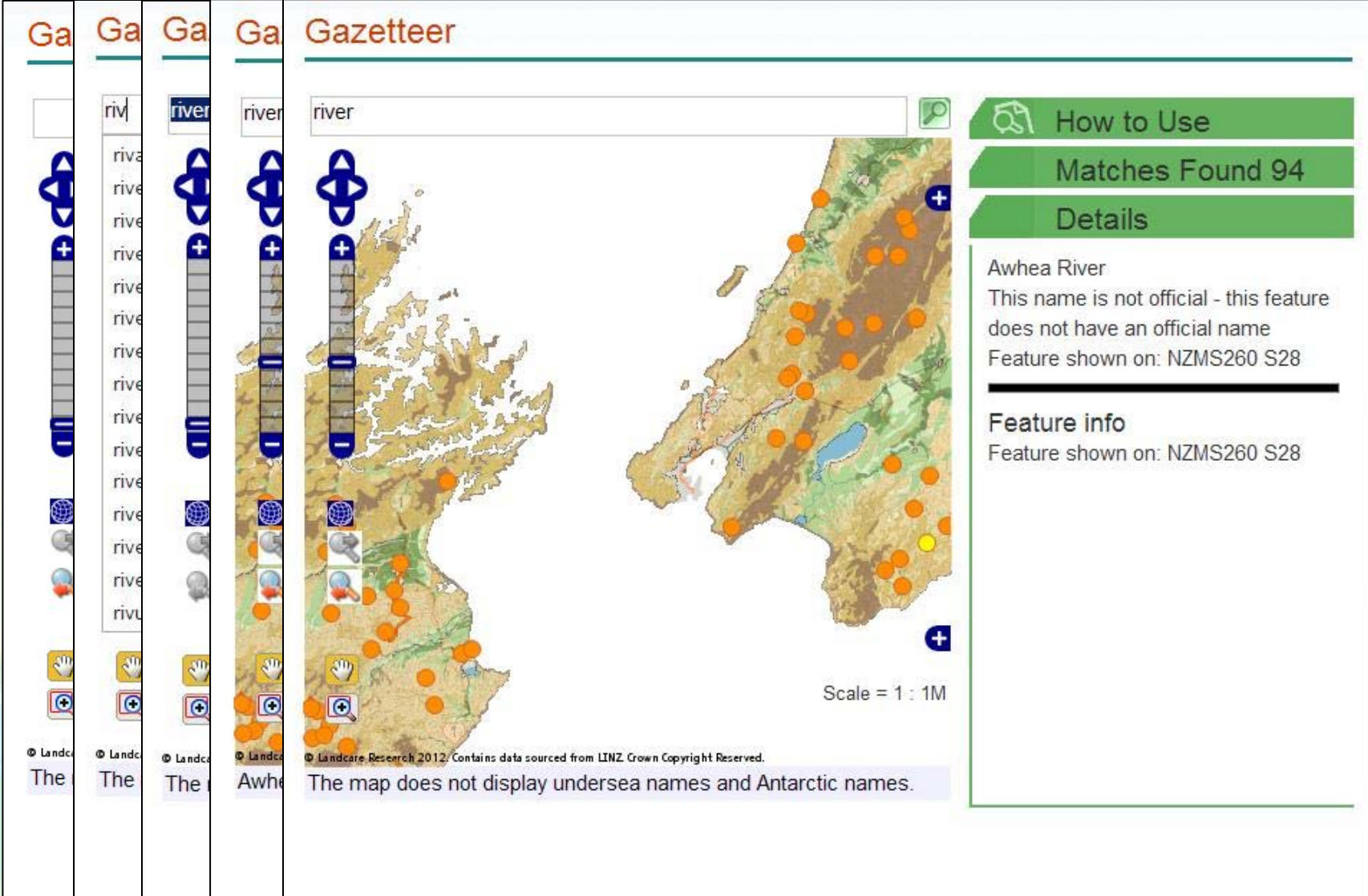
# Before – XLS or PDF



Official Name	Name Status	Feature	Statutory Reference	Land District	Projection	Northing	Easting	Datum	Latitude	Longitude	Description
Abbees Peak	Approved	Peak	1925 (HON) p.1	Canterbury	NZTM2000	5160700	1381500	NZGD2000	43 40 28 S	170 17 22 E	On the Liebig Range
Abbey Pass	Approved	Pass	1972 (18) p.379	Canterbury	NZTM2000	5161000	1381200	NZGD2000	43 40 18 S	170 17 09 E	Mountain pass immediately west of
Abbot Peak	Approved	Peak	1925 (HON) p.1	Canterbury	NZTM2000	5161600	1381700	NZGD2000	43 39 60 S	170 17 32 E	One the Liebig Range
ABC Cave	Approved	Cave	1995 (69) p.1847	Otago	NZTM2000	4936000	1401900	NZGD2000	45 42 04 S	170 27 19 E	Trampers cave W of The Gap on
Abel Glacier	Approved	Glacier	1962 (73) p.2021	Westland	NZTM2000	5199900	1408400	NZGD2000	43 19 46 S	170 38 12 E	Leading from Garden of Eden Ice
Abel Janszoon Glacier	Approved	Glacier	1982 (76) p.2163	Westland	NZTM2000	5173700	1370000	NZGD2000	43 33 15 S	170 09 09 E	Correct spelling of glacier on north
Abel Lake	Approved	Lake	1987 (62) p.1964	Westland	NZTM2000	5198800	1408500	NZGD2000	43 20 21 S	170 38 15 E	Lake on west side of Main Divide,
Abel Tasman National Park	Approved	National Park	1943 (HON) p.1	Nelson	NZTM2000	5481100	1591700	NZGD2000	40 49 16 S	172 54 06 E	Between Totoranui and Marahau
Abel Tasman Point	Approved	Point	1949 (22) p.858	Nelson	NZTM2000	5483400	1593300	NZGD2000	40 48 01 S	172 55 14 E	On the headland between Ligar B
Abel Tasman Roadstead	Approved	Strait	1990 (191) p.4192	Marlborough	NZTM2000	5484992	1685429	NZGD2000	40 46 54 S	174 00 45 E	Off E coast of D'Urville Island. Am
Abruzzi Glacier	Approved	Glacier	1938 (HON) p.1	Otago	NZTM2000	5061800	1233700	NZGD2000	44 30 15 S	168 23 32 E	On Dart slopes of Johansen and I
Abseil Peak	Approved	Peak	1999 (64) p.1492	Otago	NZTM2000	5116000	1333900	NZGD2000	44 03 39 S	169 40 40 E	Peak 2435, near Mt Huxley. Not n
Acacia Bay North	Approved	Bay	1999 (64) p.1492	South Auckland	NZTM2000	5711200	1863400	NZGD2000	38 42 31 S	176 01 45 E	Bay, Lake Taupo, between Waik
Acacia Bay South	Approved	Bay	1999 (64) p.1492	South Auckland	NZTM2000	5710700	1863200	NZGD2000	38 42 47 S	176 01 37 E	Bay, Lake Taupo, between Waik
Access Peak	Approved	Peak	1956 (17) p.406	Southland	NZTM2000	5033700	1197400	NZGD2000	44 44 13 S	167 54 55 E	South of the confluence of the we
Acheron Flat	Approved	Flat	1970 (10) p.297	Canterbury	NZTM2000	5192200	1486700	NZGD2000			
Acheron Lakes	Approved	Lake	1976 (110) p.2453	Southland	NZTM2000	4986900	1214500	NZGD2000			
Achilles Peak	Approved	Peak	1943 (HON) p.1	Canterbury	NZTM2000	5173600	1416500	NZGD2000			
Achilles Point	Approved	Point	1940 (HON) p.1	North Auckland	NZTM2000	5920800	1766200	NZGD2000			
Aciphylla Creek	Approved	Stream	1979 (42) p.1553	Westland	NZTM2000	5206500	1413200	NZGD2000			
Ada Flat	Approved	Flat	1974 (11) p.233	Canterbury	NZTM2000	5313400	1566900	NZGD2000			
Adam Creek	Approved	Stream	1975 (62) p.1632	Westland	NZTM2000	5094000	1218300	NZGD2000			
Adam Creek	Approved	Stream	1964 (79) p.2365	Westland	NZTM2000	5152000	1294400	NZGD2000			
Adams Bum	Approved	Stream	1953 (67) p.1920	Southland	NZTM2000	4972900	1156900	NZGD2000			
Adams Col	Approved	Col	1963 (76) p.1921	Westland	NZTM2000	5200900	1412500	NZGD2000			
Adams Flat	Approved	Flat	1971 (13) p.259	Westland	NZTM2000	5205500	1412400	NZGD2000			
Adams Glacier	Approved	Glacier	1962 (73) p.2021	Westland	NZTM2000	5202600	1412300	NZGD2000			
Adams Hill	Approved	Hill	1966 (1) p.18	Southland	NZTM2000	4780300	1198600	NZGD2000			
Adams Stream	Approved	Stream	1982 (76) p.2163	Canterbury	NZTM2000	5213900	1500500	NZGD2000			
Adderley Head	Approved	Headland	2003 (73) p.1896	Canterbury	NZTM2000	5172000	1585800	NZGD2000			
Adelaide Peak	Approved	Peak	1954 (80) p.2088	Otago	NZTM2000	5033300	1208800	NZGD2000			

Official Name
Abbots Creek Recreation Reserve
Abel Tasman National Park
Abel Tasman Scenic Reserve
Abut Head Scenic Reserve
Ackers Point Scenic Reserve
Acton Stream Recreation Reserve
Adams Wilderness Area
Adderley Head Scenic Reserve
A'Deanes Bush Scenic Reserve
Ahaura River East Amenity Area
Ahaura Road Amenity Area
Ahaura Terraces Ecological Area
Ahaura-Kopara Scenic Reserve

# After – Web Application



**Gazetteer**

river

How to Use

Matches Found 94

Details

**Awhea River**  
This name is not official - this feature does not have an official name  
Feature shown on: NZMS260 S28

**Feature info**  
Feature shown on: NZMS260 S28

Scale = 1 : 1M

© Landcare Research 2012. Contains data sourced from LINZ. Crown Copyright Reserved.

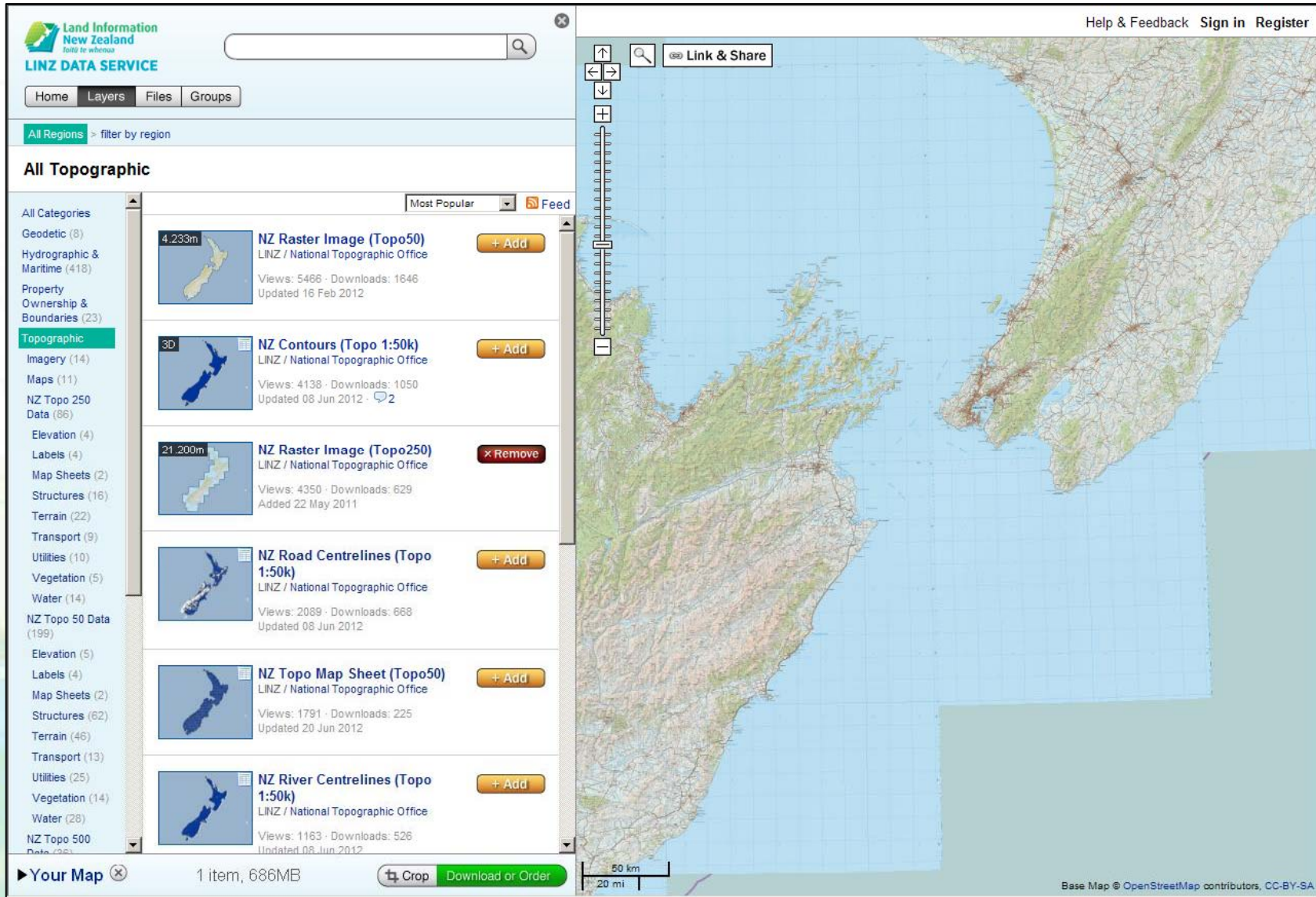
The map does not display undersea names and Antarctic names.

# Demo of Web Application



- <http://dev.linz.govt.nz/about-linz/news-publications-and-consultations/corporate-publications/gazetteer/>
- Note that this is still in development and is not the final product/service
- Soft launch scheduled for mid-September 2012
- Brief pilot for external users, so an opportunity for UNGEGN members to participate?
- Ongoing improvements over time
- LINZ to investigate a Gazetteer Service to combine each of its 'Names' datasets (Electoral, Topographic, NZGB)

# Open Layers



The screenshot displays the LINZ Data Service interface. On the left, a sidebar lists categories such as Geodetic, Hydrographic & Maritime, Property Ownership & Boundaries, and Topographic. The Topographic category is selected, showing a list of layers with details like 'NZ Raster Image (Topo50)', 'NZ Contours (Topo 1:50k)', 'NZ Raster Image (Topo250)', 'NZ Road Centrelines (Topo 1:50k)', 'NZ Topo Map Sheet (Topo50)', and 'NZ River Centrelines (Topo 1:50k)'. Each layer includes a thumbnail, title, provider, and statistics. The main map area shows a topographic map of New Zealand with a grid overlay. A 'Link & Share' button is visible above the map. At the bottom, a 'Your Map' section shows '1 item, 686MB' and options to 'Crop', 'Download or Order', and a scale bar.

# Contact



Wendy Shaw, Secretary, NZGB, [wshaw@linz.govt.nz](mailto:wshaw@linz.govt.nz), PO Box 5501, Wellington 6145, New Zealand  
64 + 4 + 4600581, <http://www.linz.govt.nz/placenames>

