



Making Geospatial Data Available and Accessible in Jamaica



Presented by
Cecille Blake, National GIS Coordinator
Office of the Prime Minister, National Spatial Data Management Division

9th UNRCC
New York
August 10-14, 2009



Presentation Outline

- Evolution of SDI in Jamaica
- Making Geospatial Data Available and Accessible
 - The NSDI Strategic Plan
 - Geospatial Data Sharing and Access Framework and Data Sharing and Pricing Policy
 - Creation of Geospatial Data Sets
 - Metadata Management
 - Access Mechanisms
 - Capacity Building
- Closing Remarks

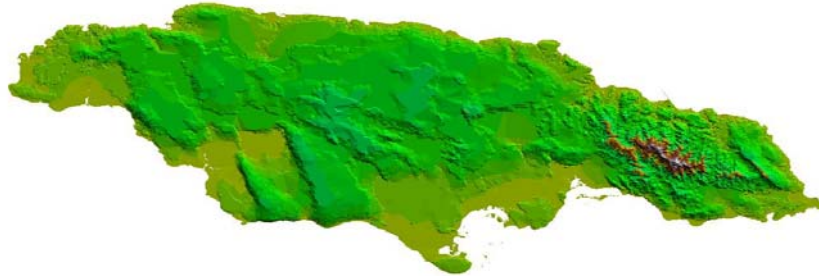
August 10-14, 2009

OPM, Spatial Data Management

2



The Evolution of SDI in Jamaica



Jamaica's History

- First GIS installation – 1986, RPPU/MOA
- 1990 – LIS Division – Survey Department
- 1995 - The Jamaica GIS Society launched
- 1996 – National Land Policy
- 1998 – Spatial Innovision established
- 2002 – Large scale imagery acquired
- 2004 – Spatial Data Mgmt Div created
- 2007 – LICJ website and portals created

August 10-14, 2009

OPM, Spatial Data Management

4



National GIS Vision



Geospatial data, products and services are **current**, **available** and **accessible**, to all users to facilitate planning, management and use of the island's resources thereby contributing to sustainable development and economic growth.

Mission

To coordinate the development and implementation of a national networked GIS inclusive of, comprehensive and accurate spatial data, for land and land related agencies and to develop and provide advice on policy, institutional requirements, legislation and regulations.

August 10-14, 2009

OPM, Spatial Data Management

5



National Land Policy (July 96)

- Details National Policies and Strategies
- GIS identified as fundamental to effective management of land (Chapter 2)
- Details:

- 
- National GIS policies
 - Role of the Land Information Council of Jamaica
 - National Vision - National GIS Network
 - On going projects and programmes

August 10-14, 2009

OPM, Spatial Data Management

6



Land Information Council of Jamaica

The LICJ promotes the equitable use, management of land and land related information through the collaborative efforts of land agencies, geared towards the promotion of national development and growth.

- The Council was created in 1992.
- Has membership of over 50 organisations,
- Work executed by 9 sub committees, LICJ member organizations and a the secretariat, National Spatial Data Management Division of the OPM

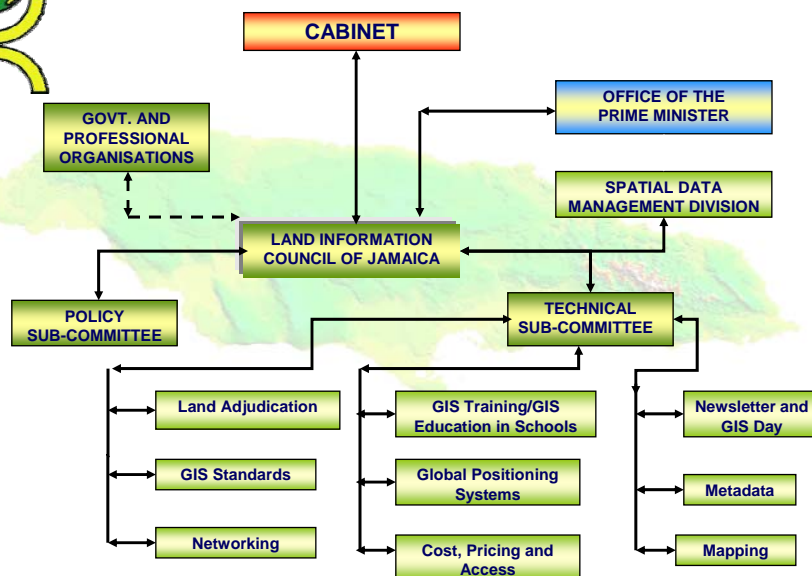
August 10-14, 2009

OPM, Spatial Data Management

7



LICJ Structure



August 10-14, 2009

OPM, Spatial Data Management

8



Summary NSDI Objectives

- The establishment of a comprehensive, NSDI.
- Ensure the **commitment** of all relevant government agencies and stakeholders to the NSDI initiative.
- The adoption/adaptation/creation of **national standards** for spatial data collection, storage, management and exchange.
- The **development of human resources** required to create and manage NSDI,
- The formulation, amendment of **legislation** required for the creation of the NSDI.
- Support the establishment of a Government wide **communication network** for dissemination of spatial data
- The development of **user mechanisms and tools to facilitate access** to and ease of use of spatial information.
- The **creation of digital spatial databases** comprising of core data sets.

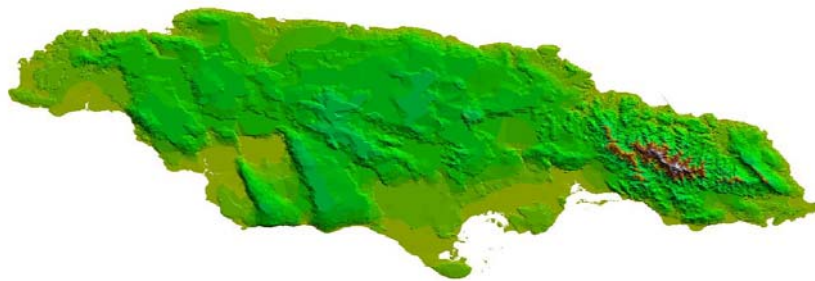
August 10-14, 2009

OPM, Spatial Data Management

9



Initiatives to Make Geospatial Data Available and Accessible





Initiatives and Programmes

- National NSDI Strategic Plan
- Data Sharing and Access Framework
- Data Sharing and Pricing Policy – govt.
- Creation of fundamental and thematic spatial data
- Spatial Data Standards
- Creation of Access Mechanisms
- Capacity building - training, education and public awareness



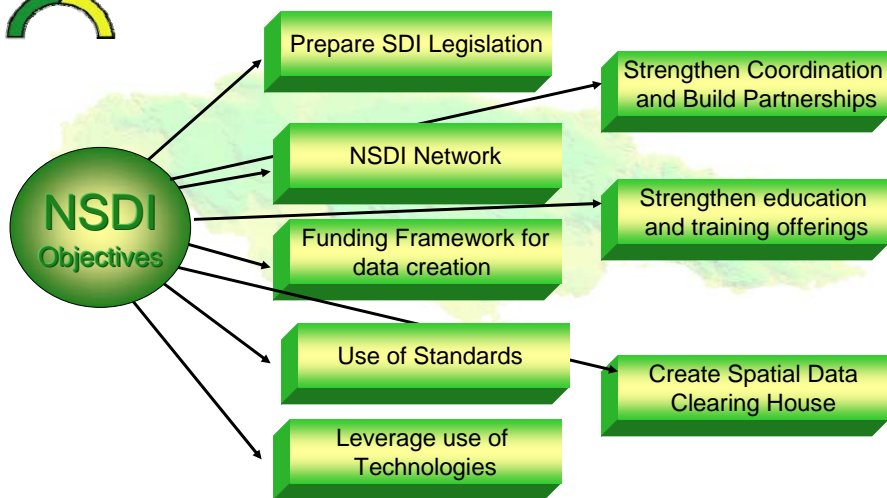
August 10-14, 2009

OPM, Spatial Data Management

11



NSDI Strategic Plan



August 10-14, 2009

OPM, Spatial Data Management

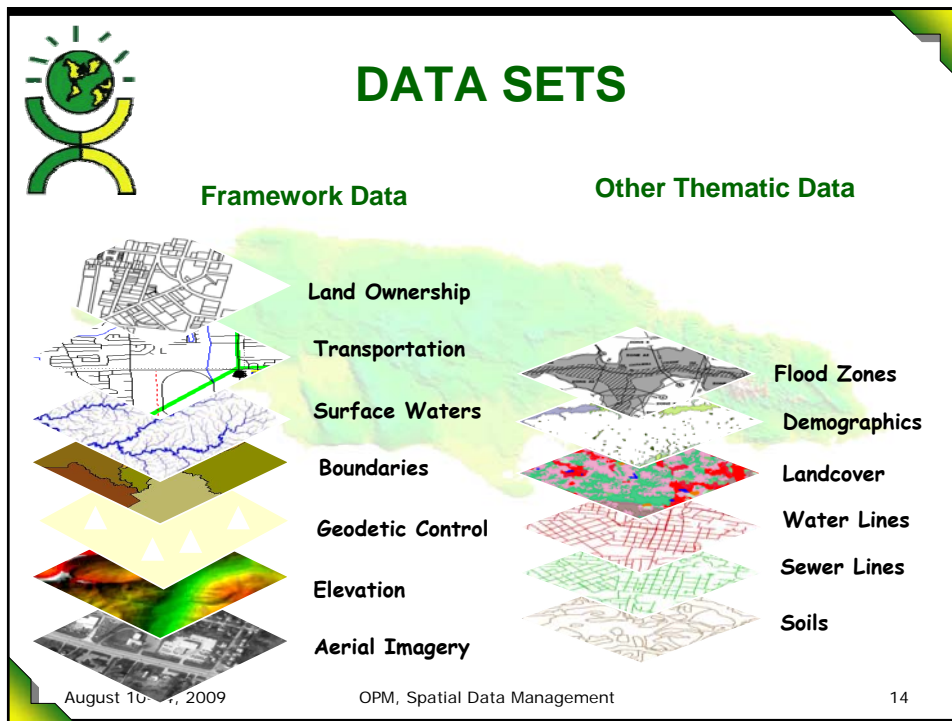
12

Data Sharing & Access Framework

- Driven by LICJ
- To define arrangements to streamline access to geospatial data
- For GoJ organisations and relevant stakeholders
- Not finalized and accepted
- Differing positions on free of cost or for a fee

Data Sharing and Pricing Policy

- Driven by Cabinet Office
- To improve access to information that is accessible and affordable
- Across all data sets
- For all Gov entities
- Policy development given special funding
- Expected Policy completion date March 2010





Geospatial Data Available - Caribbean

Fundamental Datasets	Percentage Coverage					
	Antigua & Barbuda	Bahamas	Bermuda	Cayman	Jamaica	Trinidad & Tobago
Hydrography			0	100	100	100
Cadastral	98	being done		100	*100	100
Government units				100	100	100
Orthoimagery	100	<20	100	100	100	100
Geodetic control		being done	100	100	100	100
Elevation	25	<20	100	100	100	100
Transportation network		<20	100	100	100	100
Infrastructure and utilities	25	<20	100	100	100	100
Land use				100	100	
	* Cadastral Index maps					

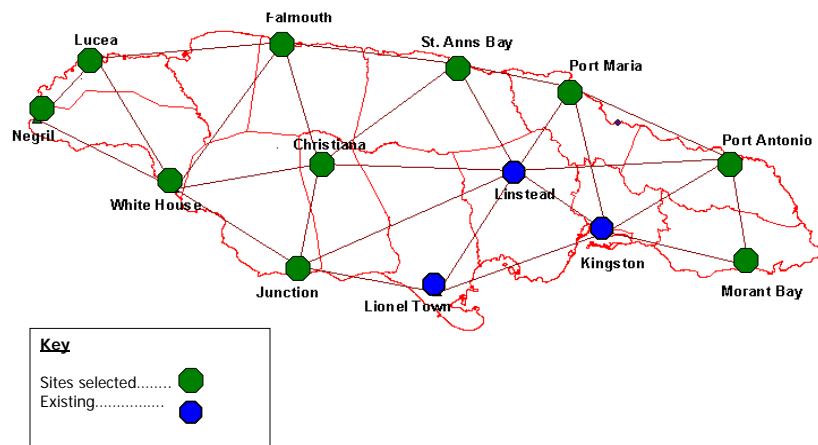
August 10-14, 2009

OPM, Spatial Data Management

15



CORS Base Station Sites "Gfix.net"



August 10-14, 2009

OPM, Spatial Data Management

16



Metadata Management

Status

- Metadata Guidelines - prepared and approved by Cabinet in 2006
- ISO 19115 metadata standard adopted
- Metadata workshops and interventions
- Metadata Portal created using GeoNetwork

No	Metadata Datasets Produced and Managed	No. of Entities
1	Land	10
2	Planning	6
3	Environmental	9
4	Socio-economic /Demographical	3
5	Utility	2
6	Security	1
7	Flora and Fauna	1
8	Heritage Resources	1
9	Street centerline data	1

August 10-14, 2009

OPM, Spatial Data Management

17



LICJ Metadata Portal

www.licj.org.jm/geonetwork

Search Results

Metadata

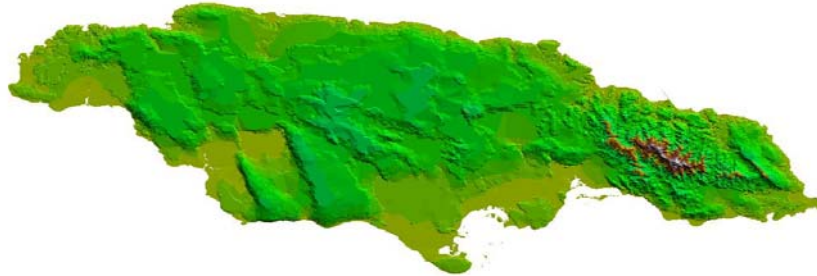
August 10-14, 2009

OPM, Spatial Data Management

18



Access Mechanisms



One-window Access - GeoPortal

Natural Resources
Data

Environmental
Data

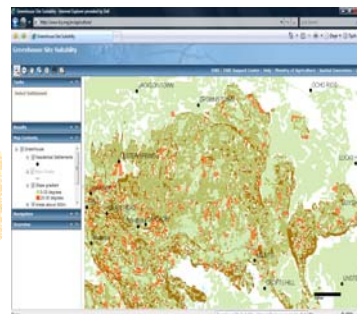
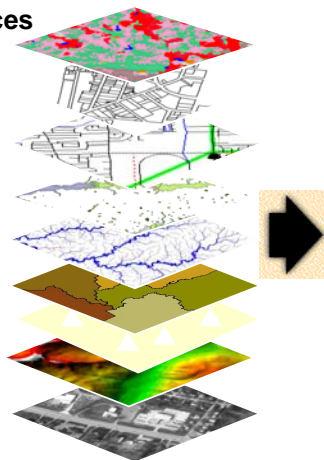
Economic Data

Natural
Hazards

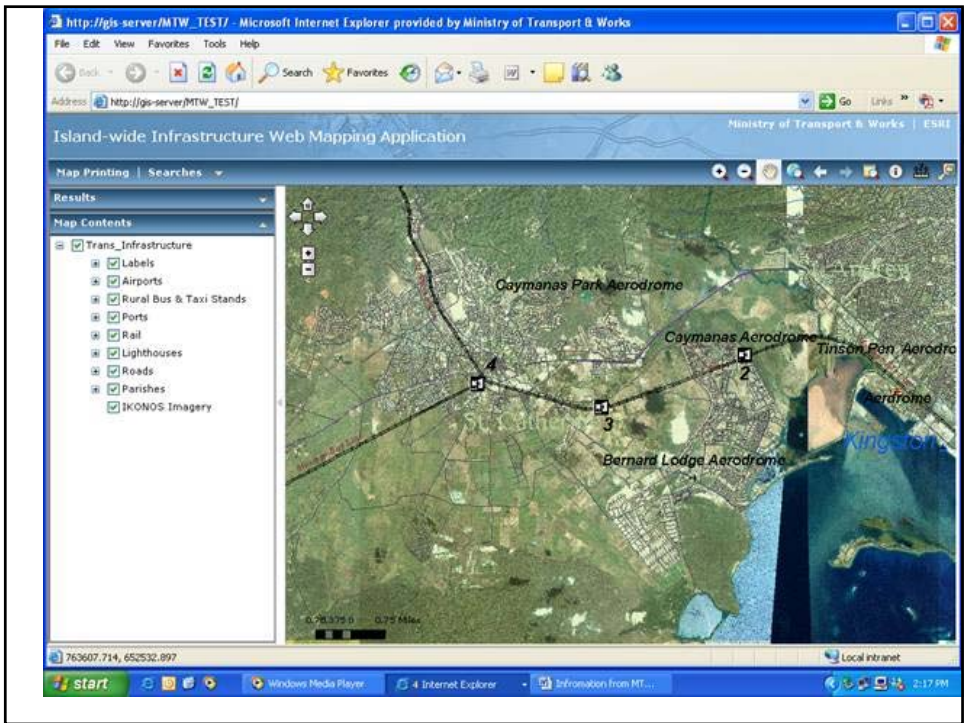
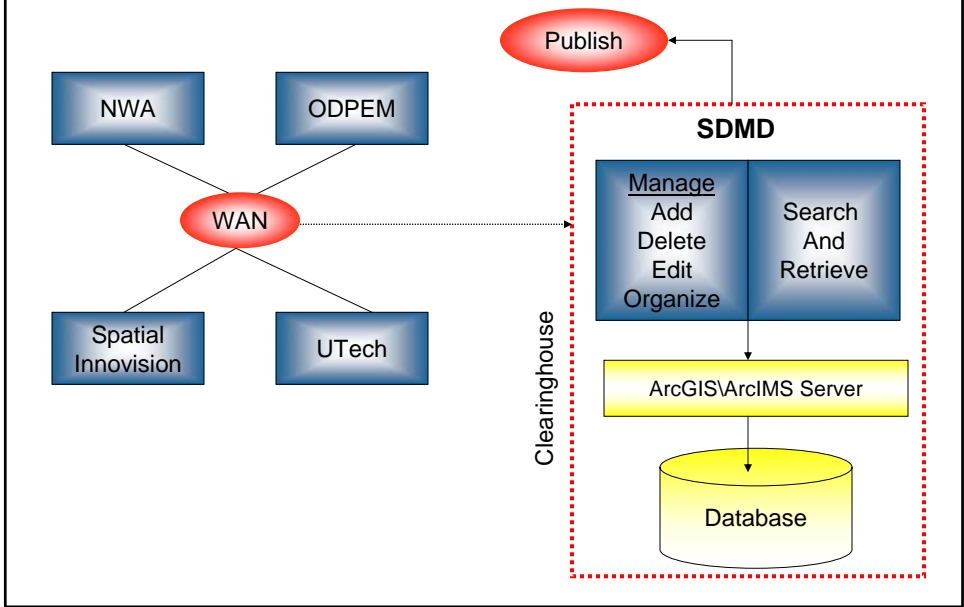
Health Data

Soils Inventory

Base Map

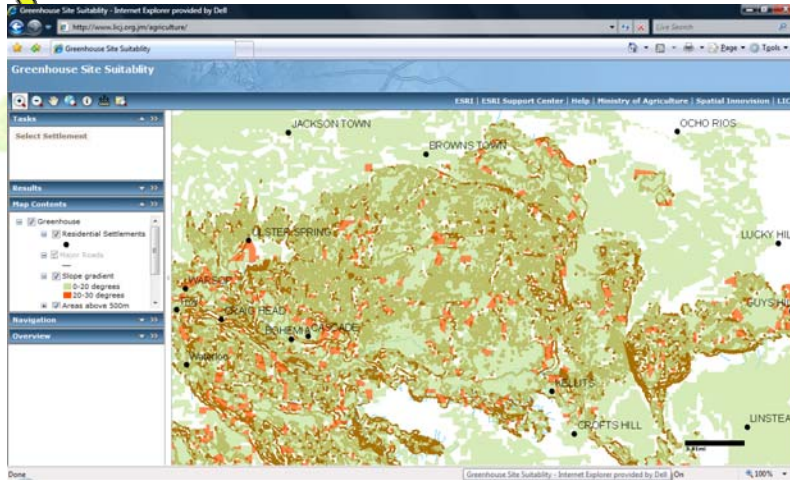


Jamaica's NSDI Design





NSDI – Green House Site Selection using ArcGIS Server



August 10-14, 2009

OPM, Spatial Data Management

23



Capacity Building

EDUCATION

- UTech, UWI Degree programmes
- LICJ/CIT – GIS Certificate/Diploma



TRAINING

- LICJ Geoinformatics Training Centre - short courses, special training programmes & projects from 1995
- GIS in Schools Education Programme
- Mona Informatics Institute

August 10-14, 2009

OPM, Spatial Data Management

24



Public Awareness

Geography Awareness Week & GIS Day

- Executive Forum
- Exposition- exhibits, presentations, demonstrations,
- Participation –public, private, education, NGO's

Public Relations

- Television and radio interviews
- Special/targetted presentations, workshops, seminars
- Participation in local conferences, trade shows etc.

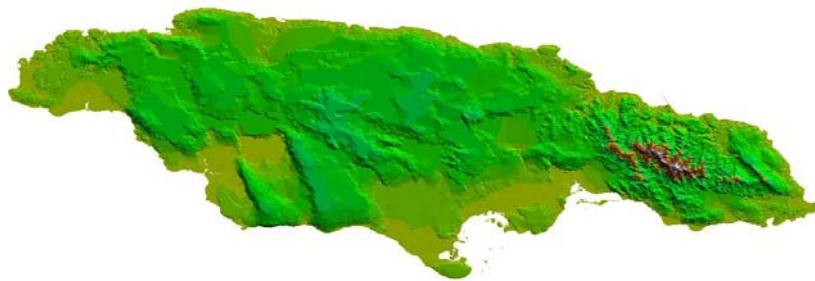
August 10-14, 2009

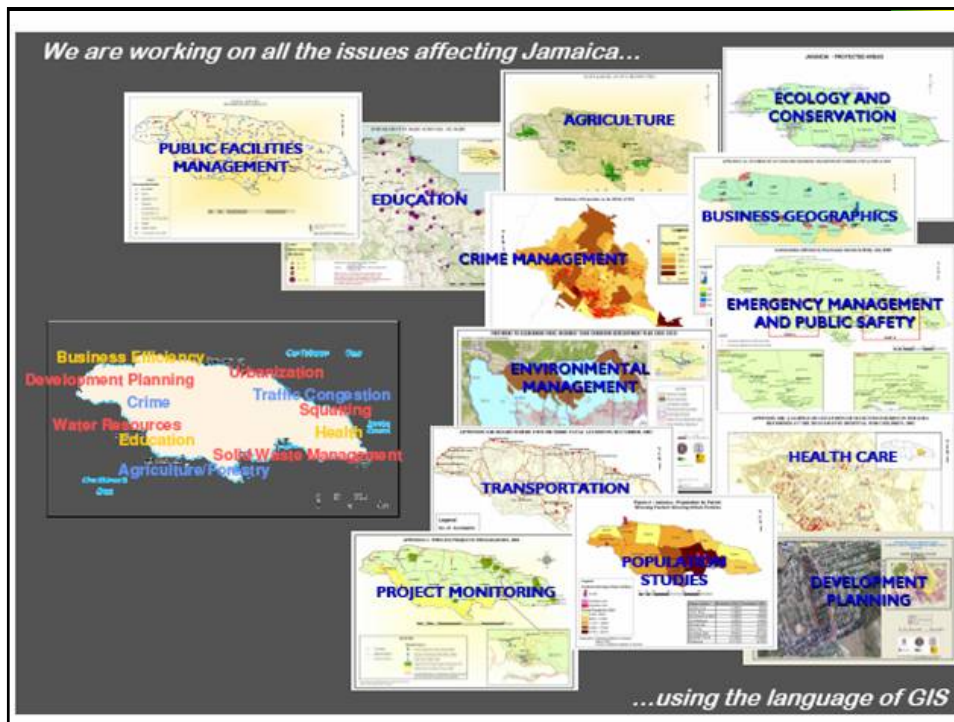

OPM, Spatial Data Management

25

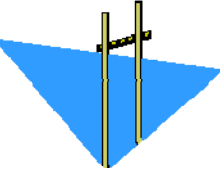


Closing Remarks



Challenges



- Increasing the awareness of SDI and ability to infuse & generate the dynamism required to achieve goals
- Project driven development vs. integration into business process
- maintain the currency of the spatial datasets, develop world class processing and analysis competencies
- creation of products and services to support a data market place that generates revenue to maintain and sustain the operations of systems/portals

August 10-14, 2009 OPM, Spatial Data Management 28



Opportunities

- Ministerial understanding
- A coordinating body – LICJ
- International focus on SDI – GSDI, INSPIRE, UNWGIS – best practices
- Growing local Geospatial service providers
- Available technology and support

August 10-14, 2009

OPM, Spatial Data Management

29



Some Future Plans

- Move forward with NSDI legislation
- VRS services available island-wide Sept 2009
- Defined indicators to properly track, measure and plan for the future of the sector,
- Focus on web application development and use
 - agriculture, business, development
- Engage and leverage the resources of the private sector to expand the geo-informatics sector.

August 10-14, 2009

OPM, Spatial Data Management

30



Success Requires . . .

- Enabling policy and legislation
- Clear political and senior management accountabilities for government-wide targets
- Institutionalize the use of metadata
- Clear technical, coordination, and financial framework for data development, maintenance, and access.
- 'Opportunistic' funding strategy / flexible

August 10-14, 2009

OPM, Spatial Data Management

31



THANK YOU FOR PARTICIPATING!

SDI Matters to all of us!

For additional information contact

cblake@cwjamaica.com

[/www.licj.org.jm](http://www.licj.org.jm)

August 10-14, 2009

OPM, Spatial Data Management

32